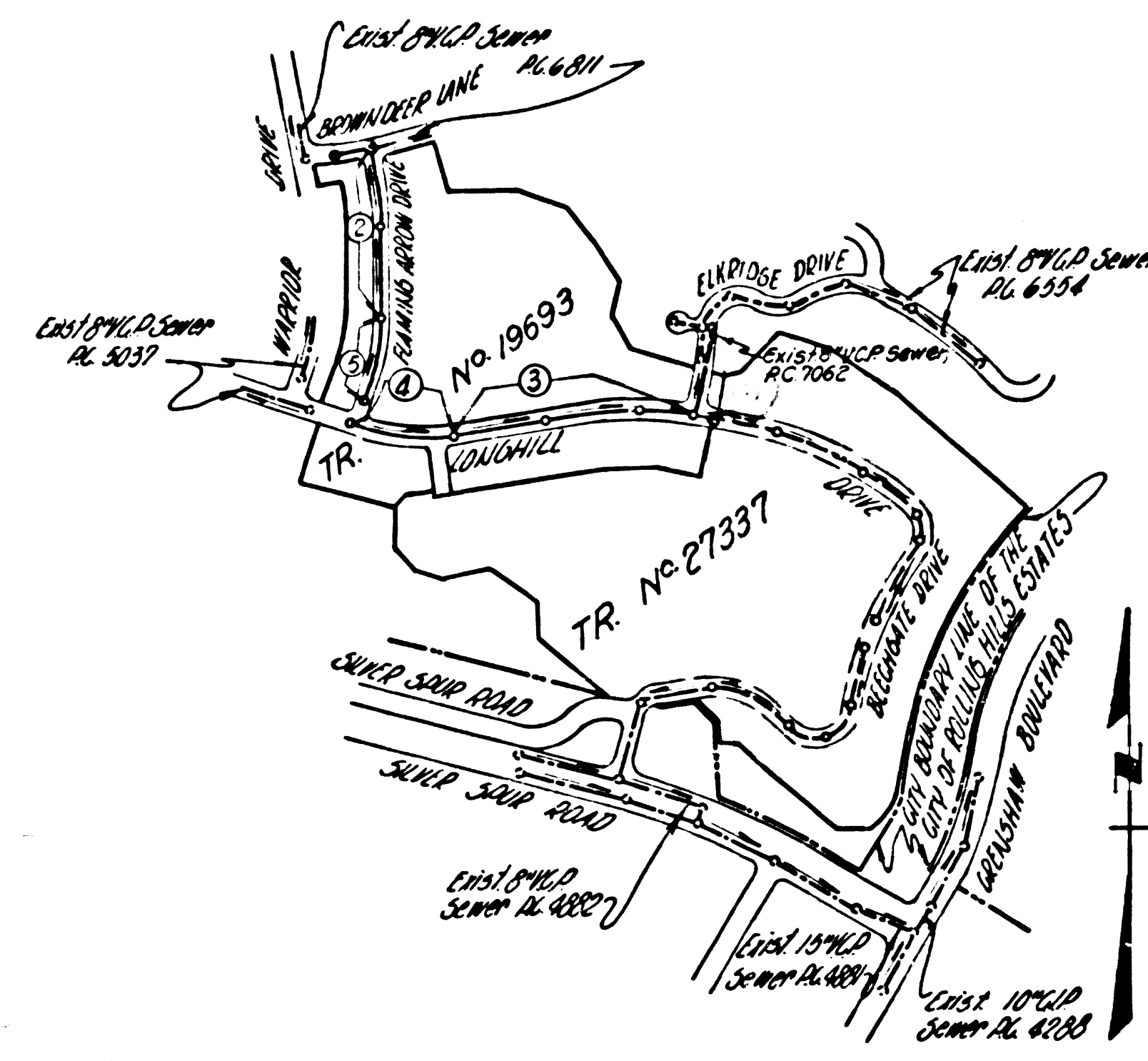


B.M. 542368.9 ELEV. 983.793

B.M. 100 ± 1' U.C. ref. @ L.H. cor. HAWTHORNE BLVD & SILVER SPRING RD ± 85' U.C. ± 30' N. 94. ind.



INDEX MAP
TRACT No. 19693
SCALE 1"=600'
PG. 6796

PRIVATE ENGINEER'S
NOTICE TO CONTRACTOR

THE EXISTENCE AND LOCATION OF ANY UNDERGROUND UTILITY PIPES IN STRUCTURES SHOWN ON THESE PLANS ARE OBTAINED BY A SEARCH OF THE AVAILABLE RECORDS TO THE BEST OF OUR KNOWLEDGE. THERE ARE NO EXISTING UTILITIES EXCEPT AS SHOWN ON THIS MAP. THE CONTRACTOR IS REQUESTED TO TAKE PRECAUTIONARY MEASURES TO PROTECT THE UTILITY LINES SHOWN AND ANY OTHER LINES NOT OF RECORD OR NOT SHOWN ON THIS DRAWING.

DOUBLE SCALE
LOMITA BLDG. DIST. NO. 12

PROFILE ALIGNMENT AND GRADE OF
SANITARY SEWERS PAGE 1
TO BE CONSTRUCTED IN

TRACT No. 19693
PRIVATE CONTRACT NO. 6796

W.S. 27
3 SHEETS; 5 PAGES
SCALE: VERT. 1"=4'
HORIZ. 1"=40'
APRIL, 1964

PREPARED IN THE OFFICES OF
ENGINEERING SERVICE CORPORATION

37200
REG. C. E. NO. 13023

FOR LEGEND SEE PLAN NO. S-1

- 1. PROVIDE STAKES ON THE PROPERTY LINE OR PROPERTY LINES PRODUCED AT RIGHT ANGLES TO THE SEWER LINE AT THE CENTER LINE OF EACH MANHOLE.
- 2. NO REPRESENTATIVE OF THE COUNTY ENGINEER WILL SURVEY OR LAY OUT ANY PORTION OF THE WORK.
- 3. THE PRIVATE ENGINEER SHALL FURNISH THE COUNTY ENGINEER WITH GRADE SHEETS AND STATIONING FOR ALL HOUSE LATERALS AND Y BRANCHES AND SHALL PROVIDE STAKES FOR THEM AT THEIR PROPER LOCATIONS WITH STATIONING PLAINLY MARKED. ALL HOUSE LATERALS SHALL BE CONSTRUCTED IN A STRAIGHT ALIGNMENT AT RIGHT ANGLES FROM THE MAIN LINE SEWER EXCEPT AS SHOWN ON THE PLANS. HOUSE LATERALS FROM CHIMNEYS SHALL NOT HAVE AN ANGLE OF LESS THAN 45° WITH THE MAIN LINE SEWER. ANY CHANGE IN ALIGNMENT SHALL BE REQUESTED IN WRITING BY THE PRIVATE ENGINEER.
- 4. THE PRIVATE ENGINEER SHALL FURNISH THE HOUSE LATERAL DEPTH AT THE PROPERTY LINE BELOW THE TOP OF CURB ELEVATION FOR EACH HOUSE LATERAL ON THE GRADE SHEET.
- 5. NO REVISIONS SHALL BE MADE IN THESE PLANS WITHOUT THE APPROVAL OF THE COUNTY ENGINEER.
- 6. THE CONTRACTOR SHALL NOTIFY THE CONSTRUCTION DIVISION BY TELEPHONE, MADISON 5-4747, EXT. 8133, AT LEAST TWENTY-FOUR HOURS BEFORE STARTING ANY WORK UNDER THIS CONTRACT.
- 7. MANHOLES SHALL BE BRICK SEWER STRUCTURES PER S-8 PRECAST CONCRETE MANHOLES PER S-5 OR S-6 MAY BE USED AS AN ALTERNATE IN LOCATIONS APPROVED BY THE COUNTY ENGINEER.
- 8. USE STANDARD MANHOLE FRAMES AND COVERS, S-8, EXCEPT AS NOTED.
- 9. MANHOLE TOPS IN UNIMPROVED RIGHTS-OF-WAY TO BE SIX INCHES ABOVE FINISHED GRADE.
- 10. USE EXTRA STRENGTH PIPE ALL PIPE IS STANDARD DEPTH EXCEPT AS NOTED.
- 11. USE MECHANICAL CONNECTION JOINTS FOR ALL V.C.P. JOINTS PER SPECS. SECS. 34, 49 & 42.

- 12. IF A POWER POLE IS WITHIN THREE FEET OF THE SEWER, THE SEWER SHALL BE ENCASED PER S-23 TWO FEET ON EACH SIDE FROM THE POINT OF INTERFERENCE.
- 13. IF DURING THE COURSE OF CONSTRUCTION IT IS DETERMINED THAT THERE IS LESS THAN FOUR FEET OF COVER OVER THE TOP OF A MAIN LINE OR HOUSE LATERAL V.C.P. SEWER WHICH IS NOT INDICATED ON THE PLANS, THE PIPE SHALL BE ENCASED PER S-23 UNLESS OTHERWISE APPROVED BY THE COUNTY ENGINEER.
- 14. HOUSE LATERALS TO BE CONSTRUCTED WITH INVERTS AT PROPERTY LINE. ... FEET BELOW CURB GRADE EXCEPT AS NOTED.
- 15. RESURFACE ALL TRENCHES WITHIN PAVED AREAS TO MEET L.A. COUNTY ROAD DEPT. OR CALIFORNIA STATE HIGHWAY REQUIREMENTS IN ACCORDANCE WITH PERMITS.
- 16. FOR ALLOWABLE LEAKAGE TEST USE FORMULA NO. ... SPECS. SEC. 54.
- 17. ALL STATE AND LOCAL TRUCK SAFETY ORDERS WILL BE RIGIDLY ENFORCED.
- 18. NO NO CONSTRUCTION SHALL BE PERMITTED IN PAVED AREAS WITHIN ACCESSIBLE LIMITATIONS IS SUBMITTED TO THE CONSTRUCTION DIVISION OF THE COUNTY ENGINEER'S DEPARTMENT THAT CONSTRUCTION IS GREATER THAN 80%.
- 19. IF CONSTRUCTION IS LESS THAN 80% THE SEWER ARCS BE GRADED AS SHOWN ON THE PLANS AND S-23 OR HAVE A SPECIAL CASE GRADE PER S-21. CASE OF SPECIAL MANHOLE BASINS MUST BE INSTALLED PER S-5 AS INDICATED ON PLANS.
- 20. IF CONSTRUCTION IS 30% OR GREATER EITHER CURBS AND SPECIAL MANHOLE BASINS WILL BE IN REQUIRED.

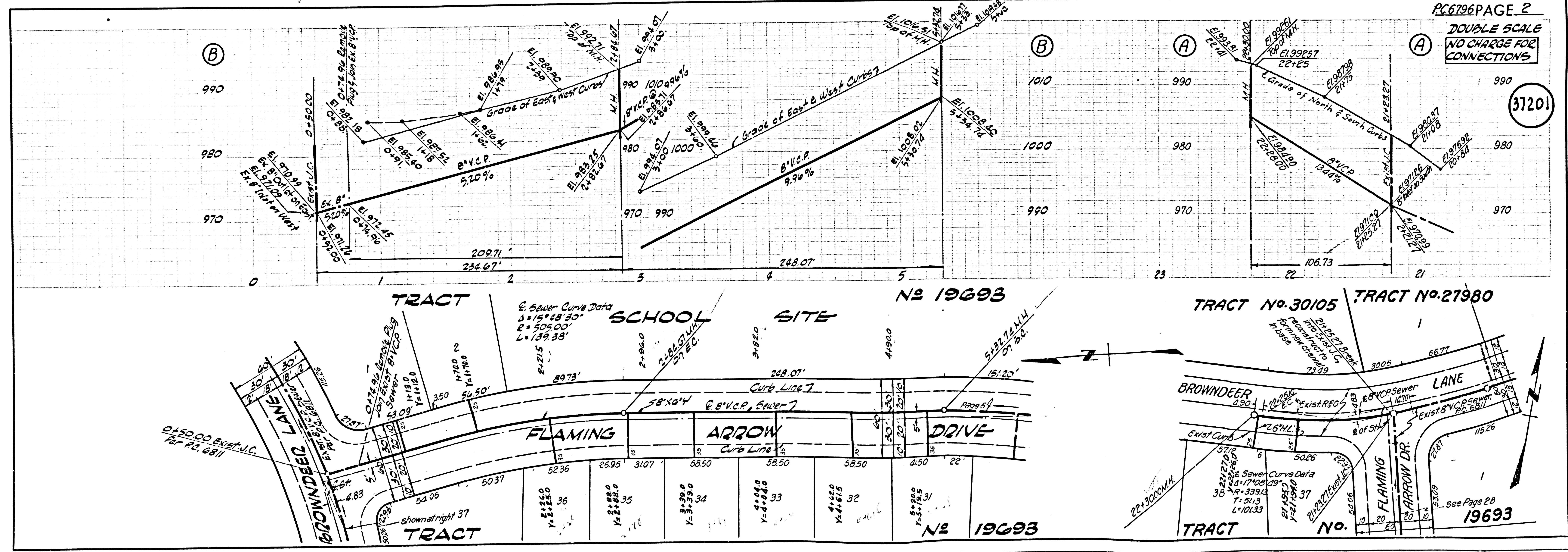
COLLECT CHARGES
AS INDICATED

Wanda J. Swain Jan. 26, 1965

NO CONNECTIONS FOR THE DISPOSAL OF INDUSTRIAL WASTES SHALL BE MADE TO SEWERS SHOWN ON THESE DRAWINGS WITHOUT WRITTEN PERMISSION FROM THE CHIEF ENGINEER AND GENERAL MANAGER OF THE COUNTY SANITATION DISTRICTS.

COUNTY OF LOS ANGELES, CALIFORNIA
JOHN A. LAMBIE, COUNTY ENGINEER
APPROVED BY: [Signature] ASSISTANT SANITATION ENGINEER
SUBMITTED BY: [Signature] REGIONAL ENGINEER
CHECKED BY: [Signature] REG. C. E. NO. 10,565

J. N. 0361.95



PC 6796 PAGE 2

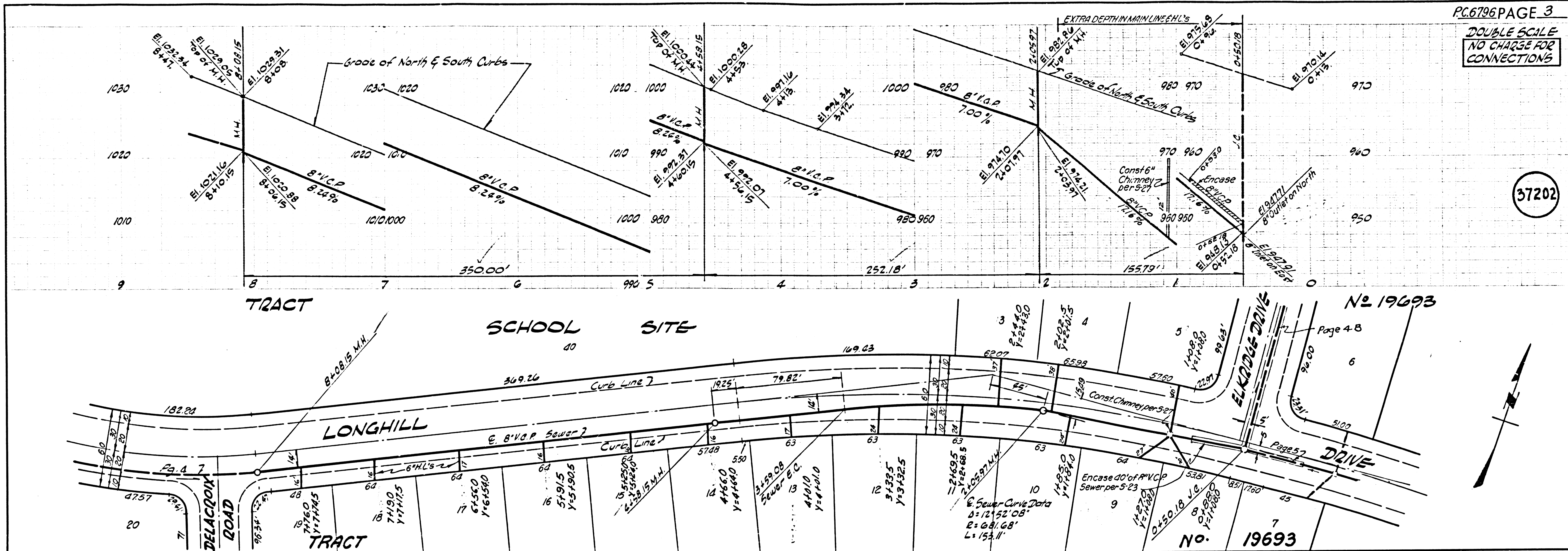
DOUBLE SCALE
NO CHARGE FOR
CONNECTIONS

37201

See Page 2B
19693

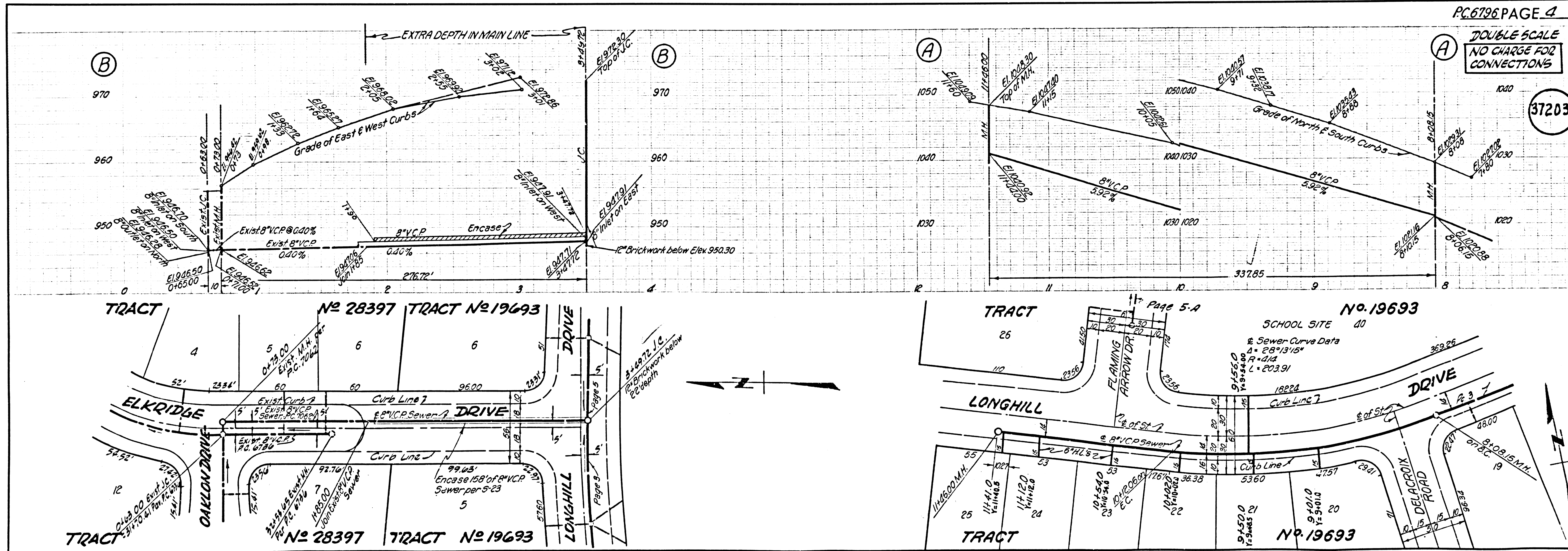
DOUBLE SCALE
NO CHARGE FOR
CONNECTIONS

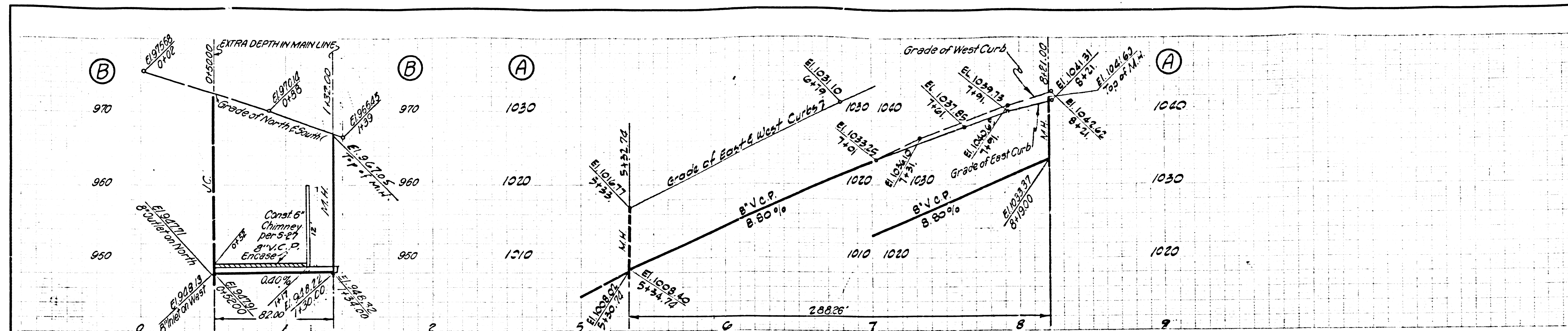
37202



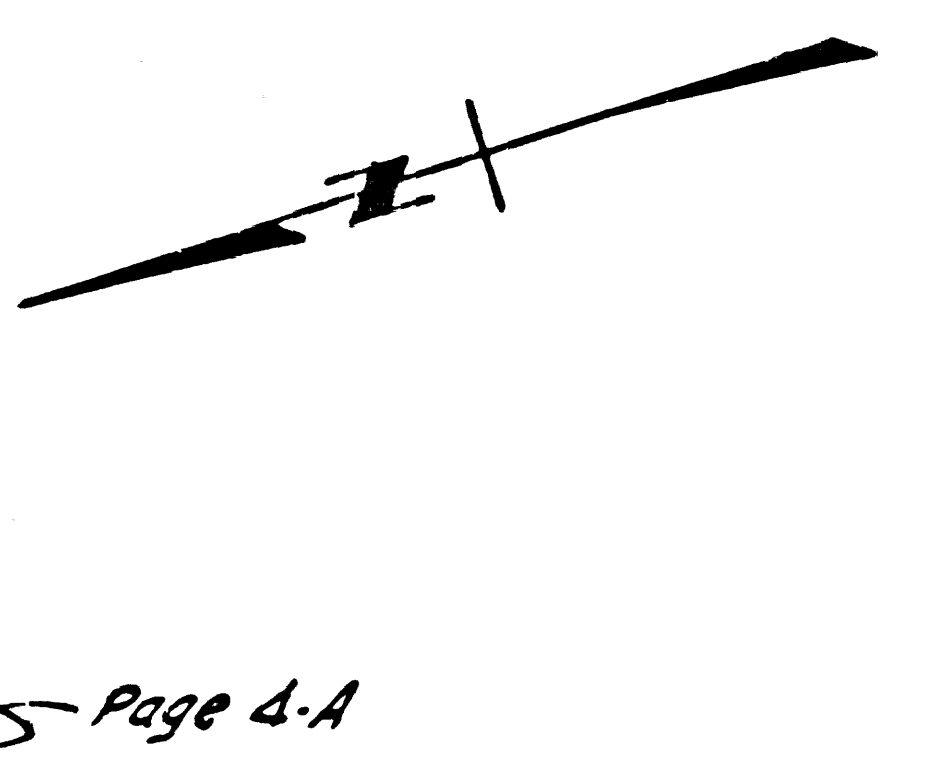
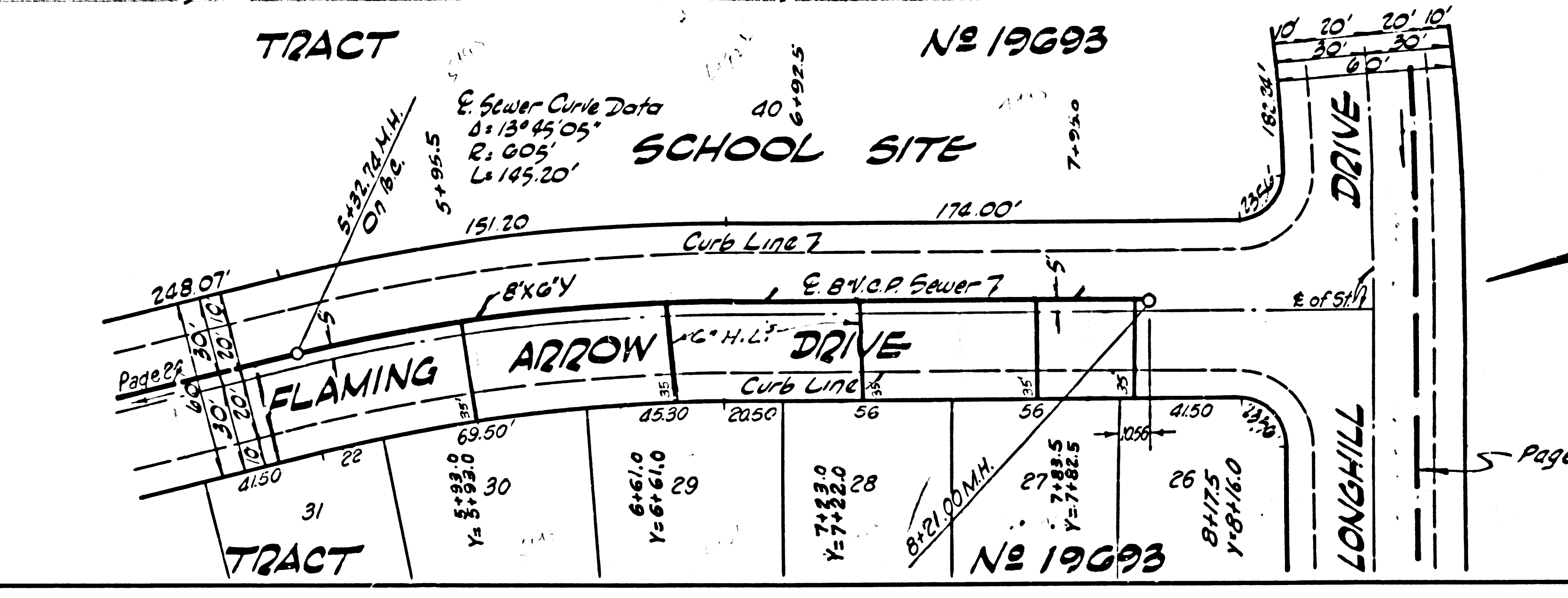
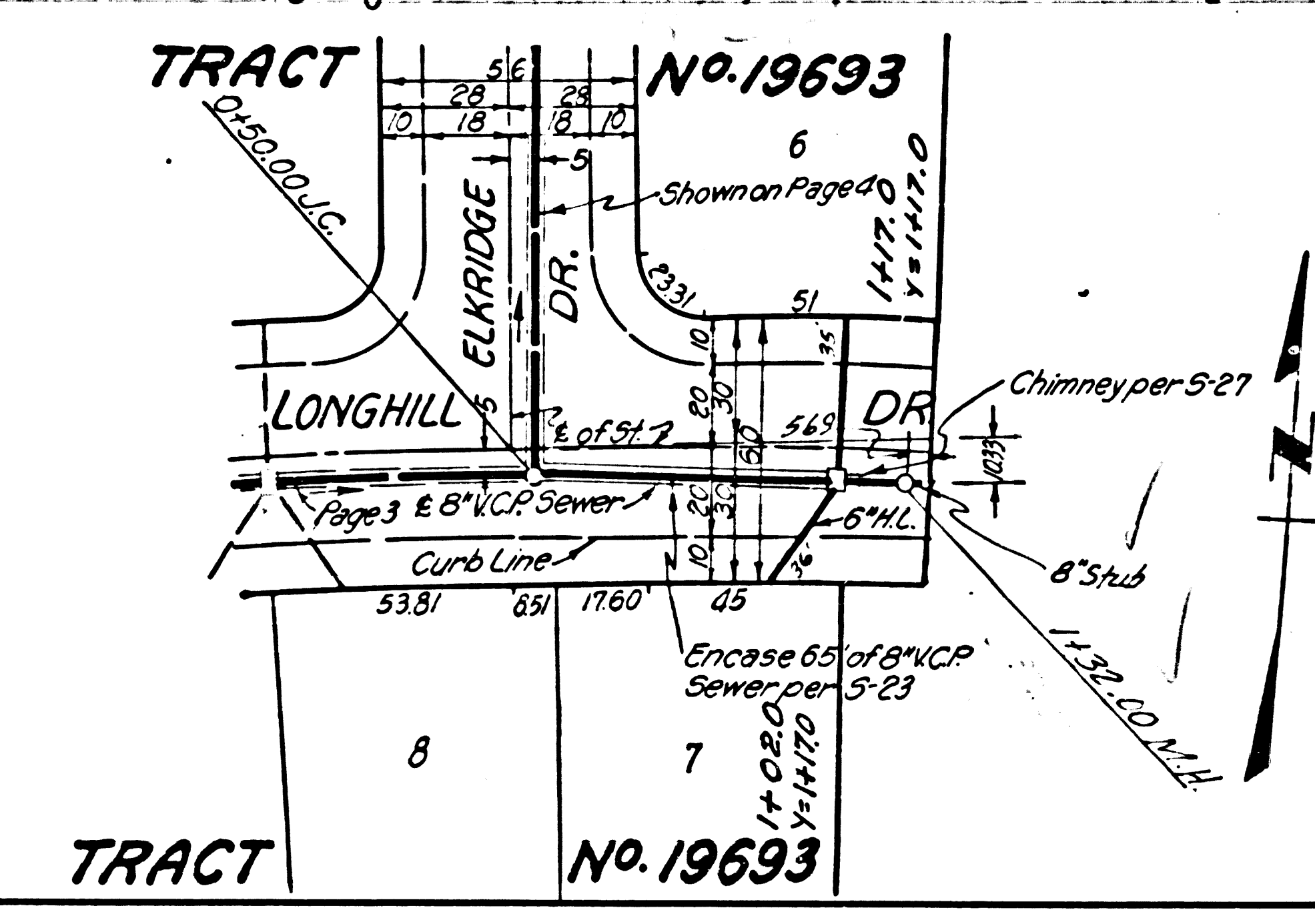
DOUBLE SCALE
NO CHARGE FOR
CONNECTIONS

37203





37204



1