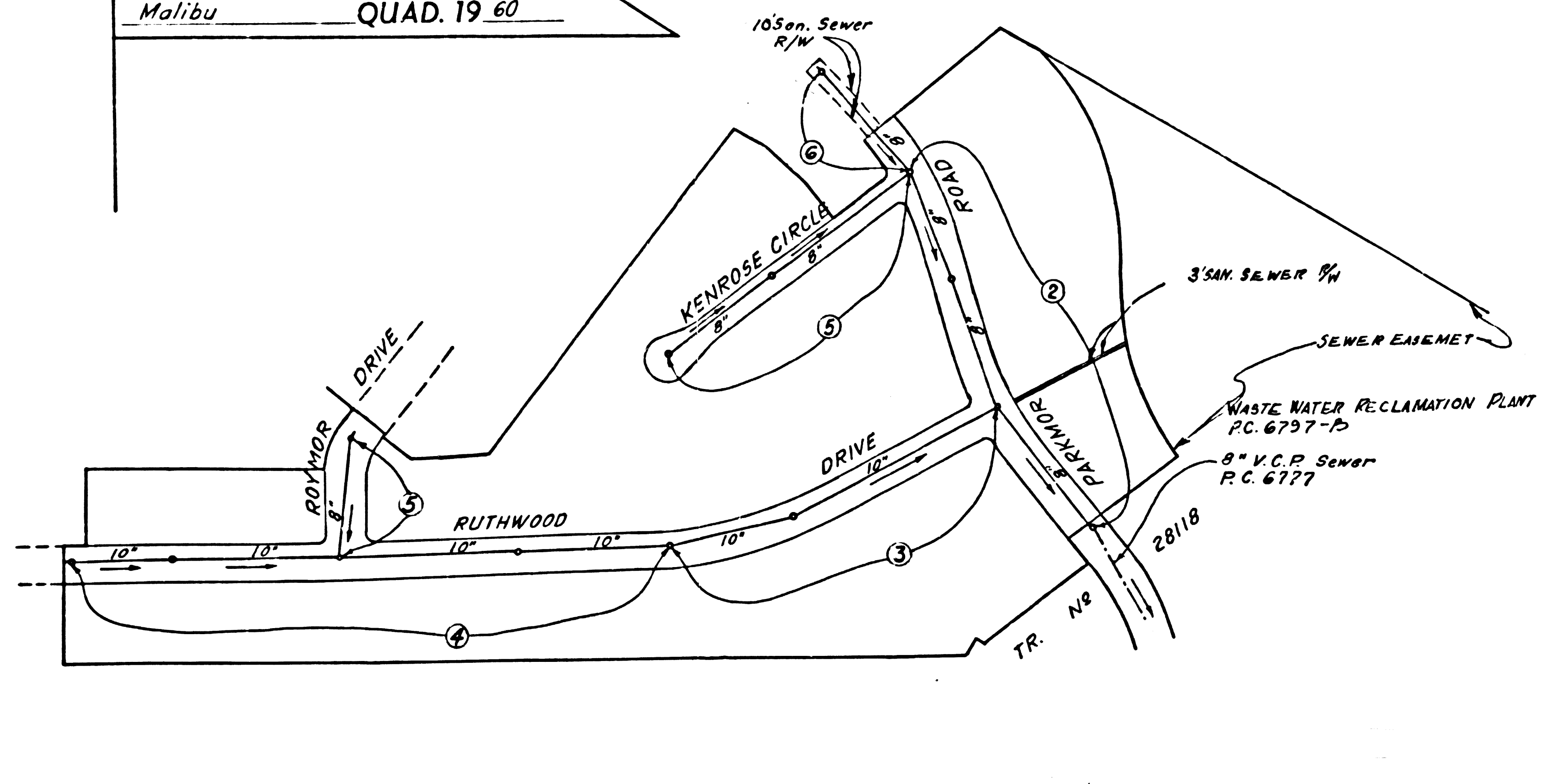


B.M. SY 5588 ELEV. 770.859
 Set L & BN in conc. base of light stand
 (flood lights) in park lot of Billingsley's
 Steak Ranch ± 39' W ± 320' S ± int.
 Ventura Blvd. & Las Virgenes Road
 Malibu QUAD. 19 60



INDEX MAP
TRACT N° 28119
P.C. 6797
 SCALE: 1" = 200'

Note: Number in circle indicates page number.

ISSUE NO PERMITS
 UNTIL OUTLET IS
 AVAILABLE

DOUBLE SCALE
CALABASAS BLDG. DIST. NO. 9.1

PROFILE ALIGNMENT AND GRADE OF **P.C. 6797**
SANITARY SEWERS PAGE 1

TO BE CONSTRUCTED IN
TRACT N° 28119
PRIVATE CONTRACT NO. 6797

W.S. 90
 3 SHEETS, 6 PAGES
 SCALE: VERT. 1" = 4' HORIZ. 1" = 40'
 No. V, 1963
 PREPARED IN THE OFFICES OF
 ENGINEERING CONSULTANTS, INC.
 1001 S. Calabasas Blvd., Pasadena, California
 BY: *G.S. Skand*
 REG. C. E. NO. 9553

34941

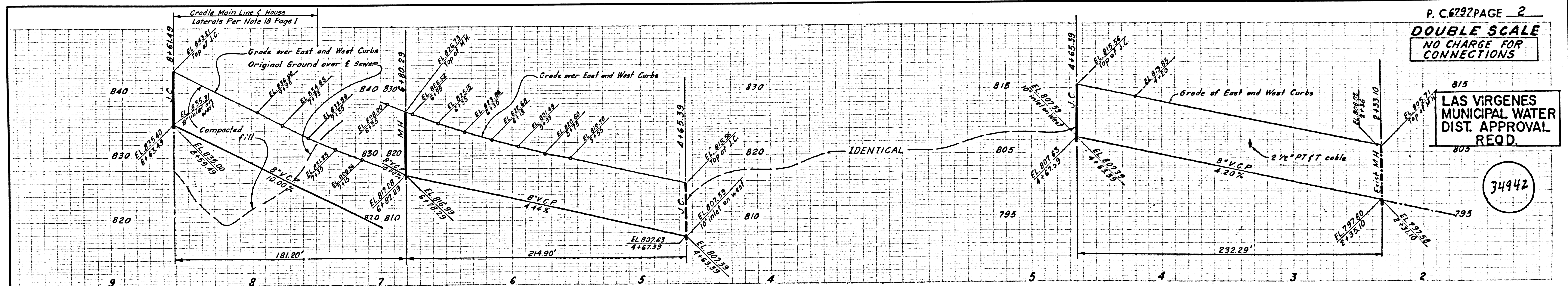
- NOTES:
- PROVIDE STAKES ON THE PROPERTY LINE OR PROPERTY LINES PRODUCED AT RIGHT ANGLES TO THE SEWER LINE AT THE CENTER LINE OF EACH MANHOLE.
 - NO REPRESENTATIVE OF THE COUNTY ENGINEER WILL SURVEY OR LAY OUT ANY PORTION OF THE WORK.
 - THE PRIVATE ENGINEER SHALL FURNISH THE COUNTY ENGINEER WITH GRADE SHEETS AND STATIONING FOR ALL HOUSE LATERALS AND Y BRANCHES AND SHALL PROVIDE STAKES FOR THEM AT THEIR PROPER LOCATIONS WITH STATIONING PLAINLY MARKED. ALL HOUSE LATERALS SHALL BE CONSTRUCTED IN A STRAIGHT ALIGNMENT AT RIGHT ANGLES FROM THE MAIN LINE SEWER EXCEPT AS SHOWN ON THE PLANS. HOUSE LATERALS FROM CHIMNEYS SHALL NOT HAVE AN ANGLE OF LESS THAN 45° WITH THE MAIN LINE SEWER. ANY CHANGE IN ALIGNMENT SHALL BE REQUESTED IN WRITING BY THE PRIVATE ENGINEER.
 - THE PRIVATE ENGINEER SHALL FURNISH THE HOUSE LATERAL DEPTH AT THE PROPERTY LINE BELOW THE TOP OF CURB ELEVATION FOR EACH HOUSE LATERAL ON THE GRADE SHEET.
 - NO REVISIONS SHALL BE MADE IN THESE PLANS WITHOUT THE APPROVAL OF THE COUNTY ENGINEER.
 - THE CONTRACTOR SHALL NOTIFY THE CONSTRUCTION DIVISION BY TELEPHONE, MADISON 9-4747, EXT. 8155, AT LEAST TWENTY FOUR HOURS BEFORE STARTING ANY WORK UNDER THIS CONTRACT.
 - MANHOLES SHALL BE BRICK SEWER STRUCTURES PER S-a-104. PRECAST CONCRETE MANHOLES PER S-a-135 OR S-a-173 MAY BE USED AS AN ALTERNATE IN LOCATIONS APPROVED BY THE COUNTY ENGINEER.
 - USE STANDARD MANHOLE FRAMES AND COVERS, S-a-117, EXCEPT AS NOTED.
 - MANHOLE TOPS IN UNIMPROVED RIGHTS-OF-WAY TO BE SIX INCHES ABOVE FINISHED GRADE.
 - USE EXTRA STRENGTH PIPE. ALL PIPE IS STANDARD DEPTH EXCEPT AS NOTED.
 - USE MECHANICAL COMPRESSION JOINTS FOR ALL V.C.P. JOINTS PER SPECS., SECS. 36 & 48 & 49.
 - IF A POWER POLE IS WITHIN THREE FEET OF THE SEWER, THE SEWER SHALL BE ENCASED, PER S-a-172, CASE II, TWO FEET ON EITHER SIDE FROM THE POINT OF INTERFERENCE.
 - IF DURING THE COURSE OF CONSTRUCTION IT IS DETERMINED THAT THERE IS LESS THAN FOUR FEET OF COVER OVER THE TOP OF A MAIN LINE OR HOUSE LATERAL V.C.P. SEWER WHICH IS NOT INDICATED ON THE PLANS, THE PIPE SHALL BE ENCASED PER S-a-172, CASE II, UNLESS OTHERWISE APPROVED BY THE COUNTY ENGINEER.
 - HOUSE LATERALS TO BE CONSTRUCTED WITH INVERTS AT PROPERTY LINE... FEET BELOW CURB GRADE EXCEPT AS NOTED.
 - RESURFACE ALL TRENCHES WITHIN PAVED AREAS TO MEET L.A. COUNTY ROAD DEPT. OR CALIFORNIA STATE HIGHWAY REQUIREMENTS IN ACCORDANCE WITH PERMITS.
 - FOR ALLOWABLE LEAKAGE TEST USE FORMULA NO. 1, SPECS., SEC. 54.
 - CONSTRUCTION WILL NOT BE PERMITTED IN FILLED AREAS UNLESS ACCEPTABLE CERTIFICATION IS SUBMITTED TO THE CONSTRUCTION DIVISION OF THE COUNTY ENGINEER DEPARTMENT THAT RELATIVE COMPACTION IS GREATER THAN 80%
 (a) IF COMPACTION IS LESS THAN 80%, THE SEWER SHALL BE CRADLED PER S-a-166 OR HAVE A SPECIAL BASE COURSE PER S-a-179, CASE III. SPECIAL MANHOLE BASES MUST BE INSTALLED PER S-a-123 AS INDICATED ON PLAN.
 (b) IF COMPACTION IS GREATER THAN 80%, CRADLING AND SPECIAL MANHOLE BASES ARE NOT REQUIRED.
 - ALL STATE AND LOCAL TRENCH SAFETY ORDERS WILL BE RIGIDLY ENFORCED.

NOTE:
 GRADES TO WHICH THIS IMPROVEMENT IS TO BE CONSTRUCTED ARE SHOWN ON PLANS AND PROFILE. GRADE POINTS FOR TOP OF CURBS, CENTER LINE OF STREETS, OR CENTER LINE OF ALLEYS ARE SHOWN BY CIRCLES ON PROFILES. AT ALL POINTS BETWEEN DESIGNATED POINTS THE GRADE SHALL BE ESTABLISHED SO AS TO CONFORM TO A STRAIGHT LINE DRAWN BETWEEN SAID DESIGNATED POINTS. ELEVATIONS ARE IN FEET ABOVE U.S.C. & G.S. SEA LEVEL DATUM OF 1929.
 THIS DRAWING AND THE DATA HEREON ARE HEREBY MADE A PART OF THE SPECIFICATIONS.
 BEFORE WORK CAN BE STARTED, THE CONTRACTOR MUST OBTAIN A PERMIT TO EXCAVATE IN COUNTY STREETS FROM THE L.A. COUNTY ROAD DEPT., DISTRICT OFFICE NO. 1, AND PAY A FEE TO THE COUNTY ENGINEER, ROOM 300, COUNTY ENGINEERING BUILDING, 100 WEST SECOND STREET OR PERMITS DIVISION, 100 WEST SECOND STREET, LOS ANGELES, CALIFORNIA. REGIONAL OFFICE, SUFFICIENT TO COVER THE COST OF CONSTRUCTION INSPECTION AND RECORD PLANS.
 APPROVAL OF THIS PLAN BY THE COUNTY OF LOS ANGELES DOES NOT CONSTITUTE A REPRESENTATION AS TO THE ACCURACY OF THE LOCATION OR THE EXISTENCE OR NON-EXISTENCE OF ANY UNDERGROUND UTILITY PIPE, OR STRUCTURE WITHIN THE LIMITS OF THIS PROJECT. THIS NOTE APPLIES TO ALL PAGES.
 IF WORK IS TO BE DONE IN A STATE HIGHWAY, A PERMIT MUST BE OBTAINED FROM THE STATE OF CALIFORNIA, DIVISION OF HIGHWAYS, 120 SOUTH SPRING STREET, LOS ANGELES, CALIFORNIA.

COUNTY OF LOS ANGELES, CALIFORNIA
 JOHN A. LAMBIE, COUNTY ENGINEER
 APPROVED BY: *John A. Lambie* ASSISTANT SANITATION ENGINEER
 LAS VIRGENES MUNICIPAL WATER DISTRICT
 SUBMITTED BY: *Jack C. ...* REGIONAL ENGINEER
 APPROVED BY: *John A. Lambie* OFFICE ENGINEER
 CHECKED BY: *Ralph ...* REG. C.E. NO. 13906

COLLECT CHARGES
 AS INDICATED
L. Curtis 1-31-64

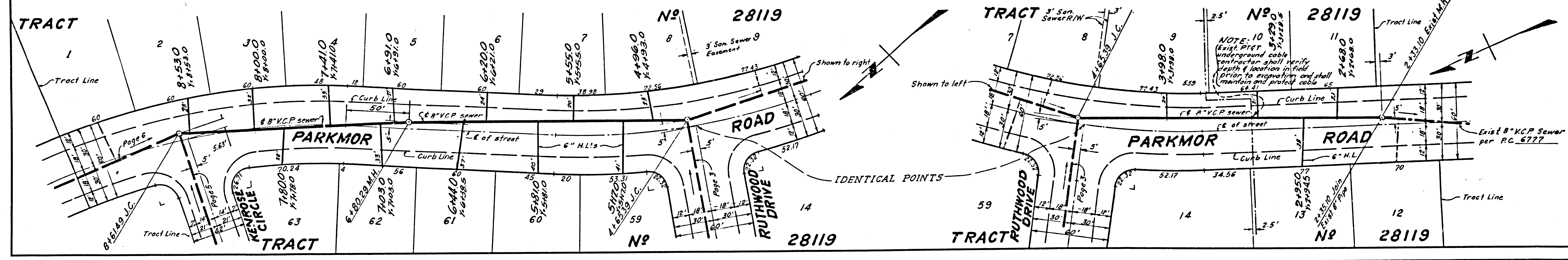
J.N. 0361.96



P.C. 6797 PAGE 2
DOUBLE SCALE
NO CHARGE FOR CONNECTIONS

LAS VIRGENES MUNICIPAL WATER DIST. APPROVAL REQD.

34942

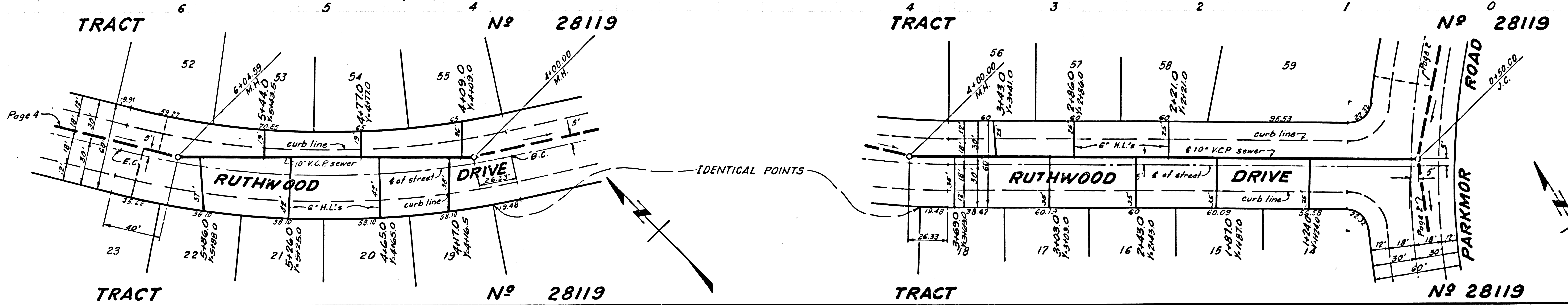
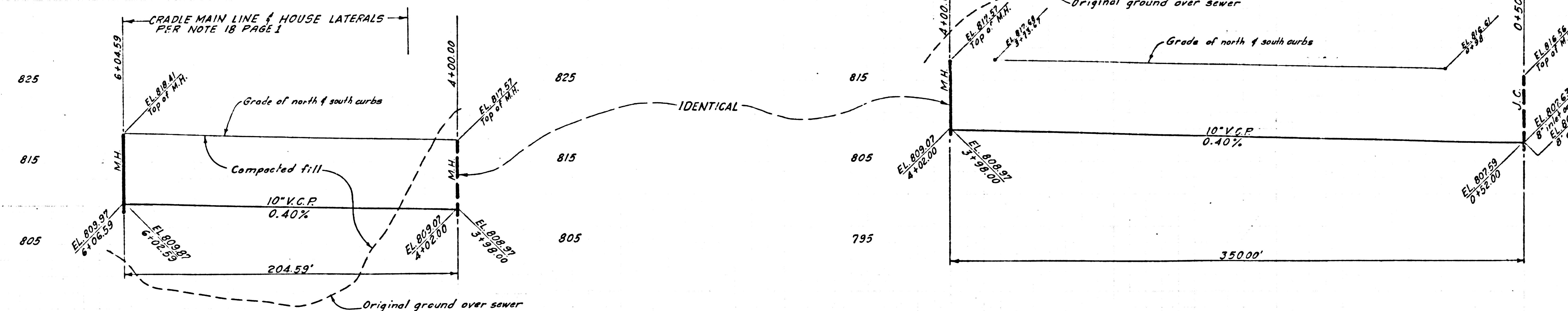


NOTE: 10
 (Exist. PTST)
 underground cable
 construction shall verify
 depth & location in field
 prior to excavating and shall
 maintain and protect cable as
 per S-a-117.

DOUBLE SCALE
NO CHARGE FOR
CONNECTIONS

LAS VIRGENES
MUNICIPAL WATER
DIST. APPROVAL
REQD.

34943



DOUBLE SCALE
NO CHARGE FOR
CONNECTIONS

LAS VIRGENES
MUNICIPAL WATER
DIST. APPROVAL
REQD.

34944

