

CONSTRUCTED IN

TRACT NO. 28629

PRIVATE CONTRACT NO. 6798

W.S. 38

8 SHEETS, 16 PAGES

38037

SCALE: VERT. 1"=4' HORIZ. 1"=40'

JANUARY, 1964

PREPARED IN THE OFFICES OF

HOPEN, HEDLUND AND DARBY

By: Harold H. Hedlund

REG. C. E. NO. 14075

FOR LEGEND SEE PLAN NO. S-6-64

NOTES

- PROVIDE STAKES ON THE PROPERTY LINE OR PROPERTY LINES PRODUCED AT RIGHT ANGLES TO THE SEWER LINE AT THE CENTER LINE OF EACH MANHOLE.
- NO REPRESENTATIVE OF THE COUNTY ENGINEER WILL SURVEY OR LAY OUT ANY PORTION OF THE WORK.
- THE PRIVATE ENGINEER SHALL FURNISH THE COUNTY ENGINEER WITH GRADE SHEETS AND STATIONING FOR ALL HOUSE LATERALS AND T BRANCHES AND SHALL PROVIDE STAKES FOR THEM AT THEIR PROPER LOCATIONS WITH STATIONING PLAINLY MARKED. ALL HOUSE LATERALS SHALL BE CONSTRUCTED IN A STRAIGHT ALIGNMENT AT RIGHT ANGLES TO THE MAIN LINE SEWER EXCEPT AS SHOWN ON THE PLANS. HOUSE LATERALS FROM CHIMNEYS SHALL NOT HAVE AN ANGLE OF LESS THAN 45° WITH THE MAIN LINE SEWER. ANY CHANGE IN ALIGNMENT SHALL BE REQUESTED IN WRITING BY THE PRIVATE ENGINEER.
- THE PRIVATE ENGINEER SHALL FURNISH THE HOUSE LATERAL DEPTH AT THE PROPERTY LINE BELOW THE TOP OF CURB ELEVATION FOR EACH HOUSE LATERAL ON THE GRADE SHEET.
- NO REVISIONS SHALL BE MADE IN THESE PLANS WITHOUT THE APPROVAL OF THE COUNTY ENGINEER.
- THE CONTRACTOR SHALL NOTIFY THE CONSTRUCTION DIVISION BY TELEPHONE, MADISON 9-4747, EXT. 8153, AT LEAST TWENTY-FOUR HOURS BEFORE STARTING ANY WORK UNDER THIS CONTRACT.
- MANHOLES SHALL BE BRICK SEWER STRUCTURES PER S-104. PRECAST CONCRETE MANHOLES PER S-135 OR S-173 MAY BE USED AS AN ALTERNATE IN LOCATIONS APPROVED BY THE COUNTY ENGINEER.
- USE STANDARD MANHOLE FRAMES AND COVERS, S-107.
- MANHOLE TOPS IN UNIMPROVED RIGHTS OF WAY TO BE SIX INCHES ABOVE EXISTING GRADE.
- USE EXTRA STRENGTH PIPE. ALL PIPE IS STANDARD DEPTH EXCEPT AS NOTED.
- USE MECHANICAL COMPRESSION JOINTS FOR ALL V.C.P. PER SPEC'S, SECS. 36 & 48 & 49.
- WHERE EVER GROUND WATER IS ENCOUNTERED DURING THE CONSTRUCTION OF THE SEWERS, THE V.C.P. JOINTS SHALL BE OF JOINT COMPOUND PER SPEC'S., SECS. 33 & 48, OR MECHANICAL COMPRESSION JOINTS PER SPEC'S., SEC. 34.
- IF A POWER POLE IS WITHIN THREE FEET OF THE SEWER, THE SEWER SHALL BE ENCASED, PER S-172, CASE III, TWO FEET ON EITHER SIDE FROM THE POINT OF INTERFERENCE.
- IF DURING THE COURSE OF CONSTRUCTION IT IS DETERMINED THAT THERE IS LESS THAN FOUR FEET OF COVER OVER THE TOP OF A MAIN LINE OR HOUSE LATERAL V.C.P. SEWER WHICH IS NOT INDICATED ON THE PLANS, THE PIPE SHALL BE ENCASED PER S-172, CASE III, UNLESS OTHERWISE APPROVED BY THE COUNTY ENGINEER.
- HOUSE LATERALS TO BE CONSTRUCTED WITHIN PROPERTY LINE... FEET BELOW CURB GRADE.
- RESURFACE ALL TRENCHES WITHIN PAVED AREAS TO MEET L.A. COUNTY ROAD DEPT. OR CALIFORNIA STATE HIGHWAY REQUIREMENTS IN ACCORDANCE WITH PERMITS.
- FOR ALLOWABLE LEAKAGE TEST USE FORMULA NO. 2, SPEC'S., SEC. 34.
- ALL STATE AND LOCAL TRENCH SAFETY ORDERS WILL BE RIGIDLY ENFORCED.
- Excavation Permit from the City of West Covina required prior to construction in City Streets.

LA PUENTE BLDG. DIST. NO. 2

Revised by: HOPEN, HEDLUND & DARBY
 Date: 5/19/65
 R.C.E. 14075

REVISION
 1. Extended main line Northerly of 510.9 + 05.68, Elberland St. Page 5B Shown on Page 13A
 Approved: COUNTY OF LOS ANGELES
 By: [Signature] Date: 5/19/65
 R.C.E. 14075

Revised By: CONSOLIDATED ENG. CO.
 REVISION
 1. Revised mainline profile on pages 2 & 3 to 100.30' from sewer. All stations on page 3 & 4 increased by 100'
 Approved: COUNTY OF LOS ANGELES
 By: [Signature] Date: 2/10/66
 R.C.E. 10443

APPROVED: COUNTY OF LOS ANGELES
 By: [Signature] Date: 2-15-66
 LOS ANGELES COUNTY SANITATION DISTRICT NO. 21
 APPROVED BY: [Signature] DATE: 2-15-66

ALL FILL MUST BE IN PLACE PRIOR TO CONSTRUCTION OF SEWER ON PAGES 15 & 16.

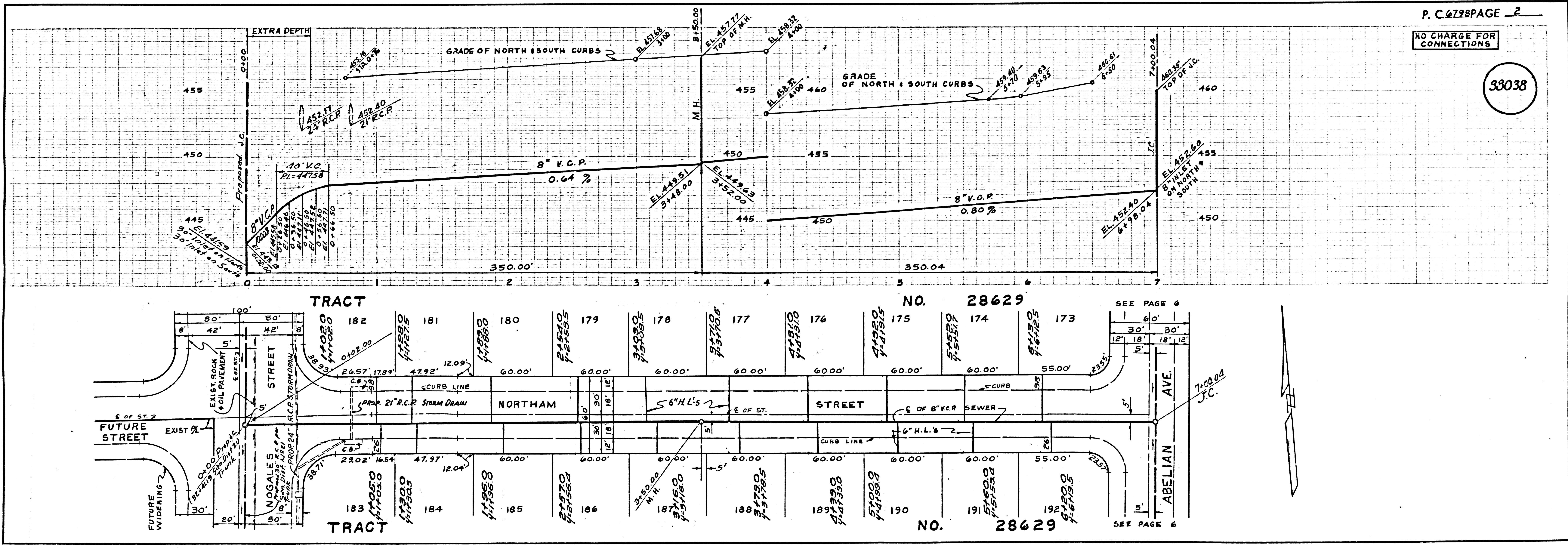
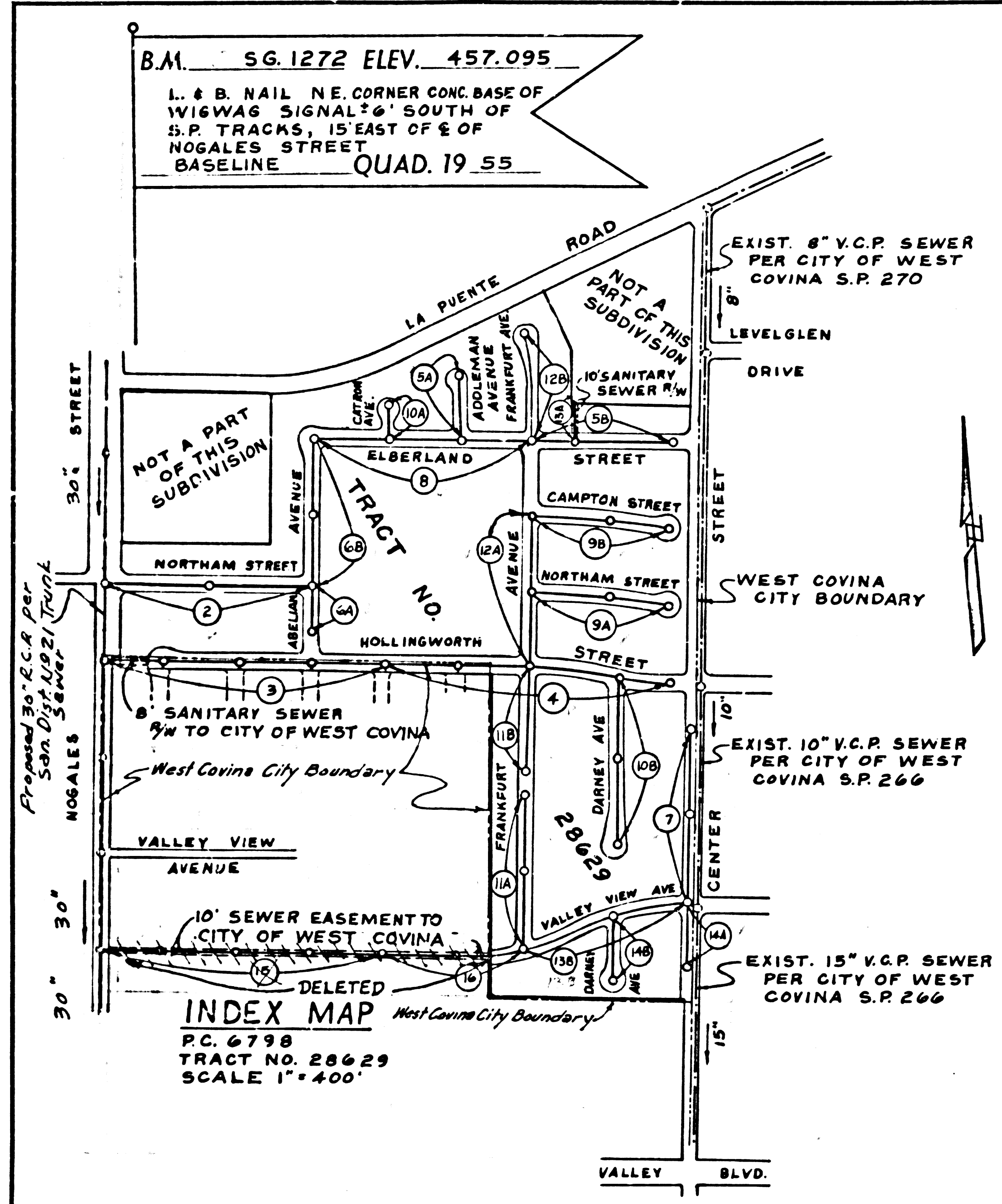
DO NOT ISSUE HOUSE CONNECTION PERMITS UNTIL P.C. 6895 OR SAN. DIST. TRUNK IS ACCEPTED

NO CONNECTIONS FOR THE DISPOSAL OF INDUSTRIAL WASTES SHALL BE MADE TO SEWERS SHOWN ON THESE DRAWINGS WITHOUT WRITTEN PERMISSION FROM THE CHIEF ENGINEER AND GENERAL MANAGER OF THE COUNTY SANITATION DISTRICTS.

COLLECT CHARGES AS INDICATED
 [Signature] 12-23-64

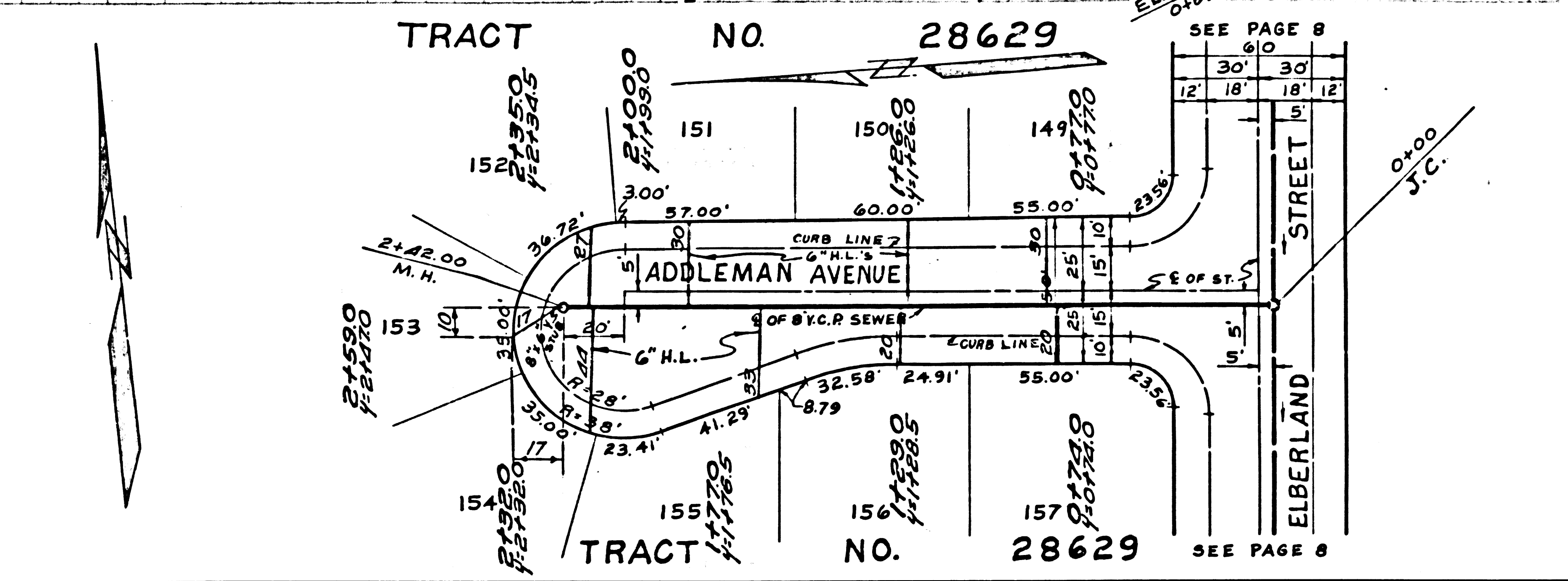
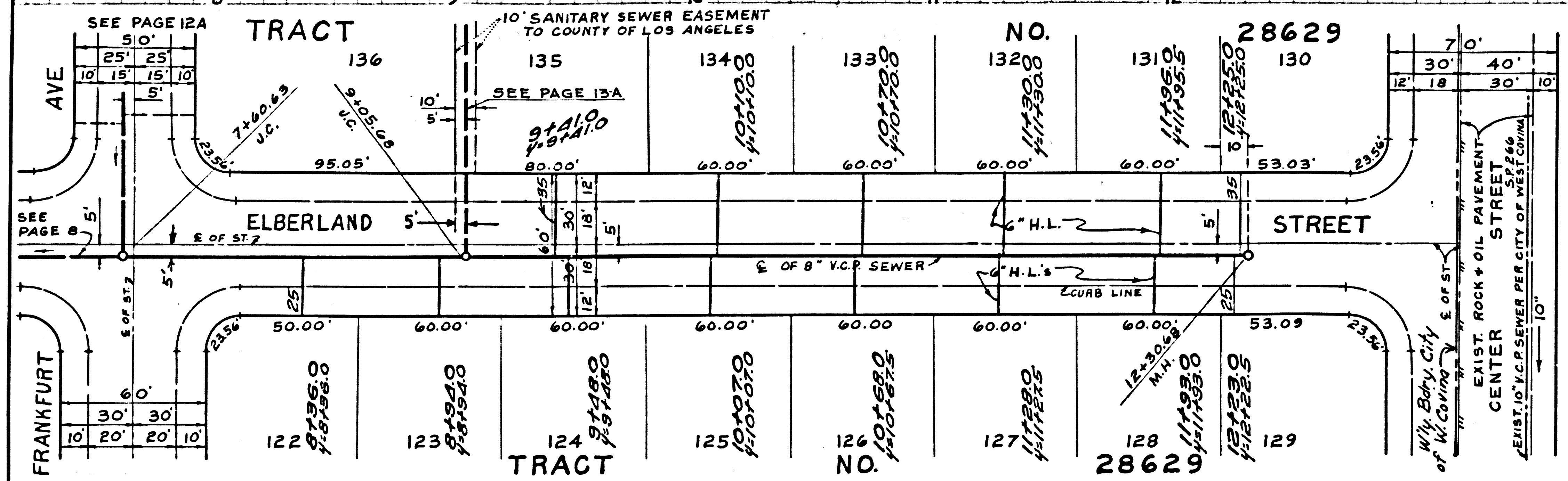
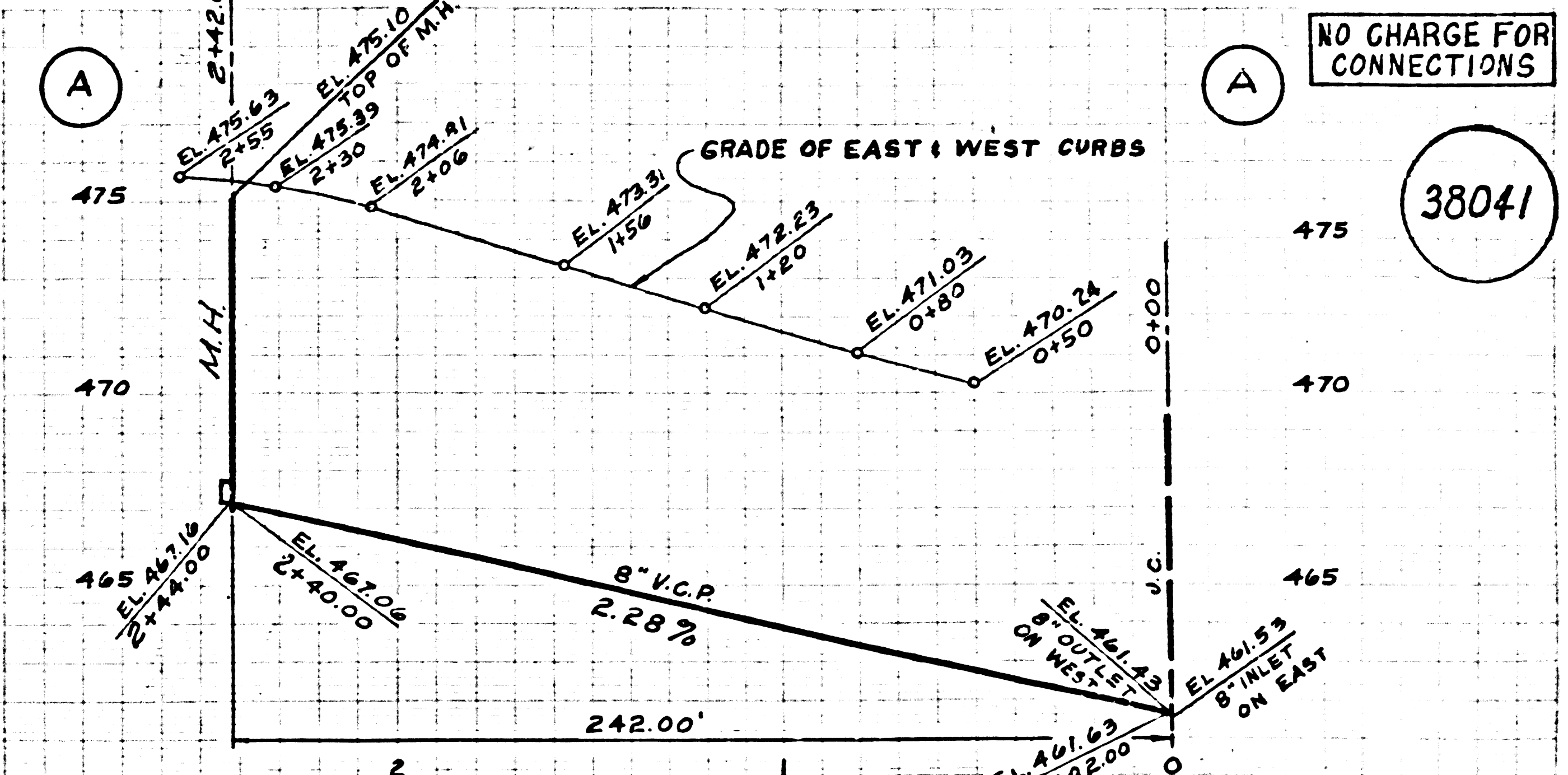
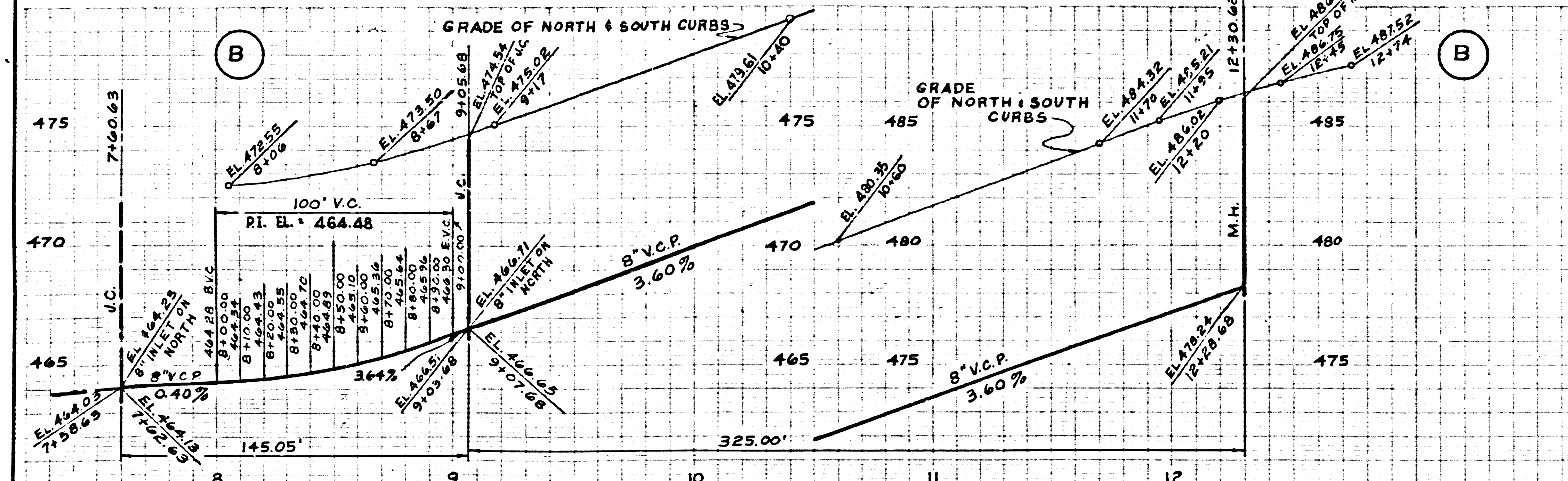
REVISION BY ADAMS & ELLS
 REVISION:
 1. Relocated main line on pages 15 and 16 to conform to proposed alignment of Valley View Avenue westerly to Nogales Street
 Approved: COUNTY OF LOS ANGELES
 By: [Signature] Date: 6-1-65
 R.C.E. 10443
 Approved: CITY OF WEST COVINA
 By: [Signature] Date: 6-3-65
 City Engineer

COUNTY OF LOS ANGELES, CALIFORNIA
 JOHN A. LAMBIE, COUNTY ENGINEER J. D. PARKHURST, CHIEF ENGINEER
 CO. SAN. DIST. NO. 21
 APPROVED BY: [Signature] ASSISTANT SANITATION ENGINEER APPROVED BY: [Signature] OFFICE ENGINEER
 SUBMITTED BY: [Signature] S.A.R. DIMAS REGIONAL ENGINEER
 CHECKED BY: [Signature] S.A.R. DIMAS REGIONAL ENGINEER
 NO. C.E. NO. 12256
 APPROVED: CITY OF WEST COVINA
 By: [Signature] City Engineer R-7876 Date: Nov. 20, 1964 J.N. 0361.97



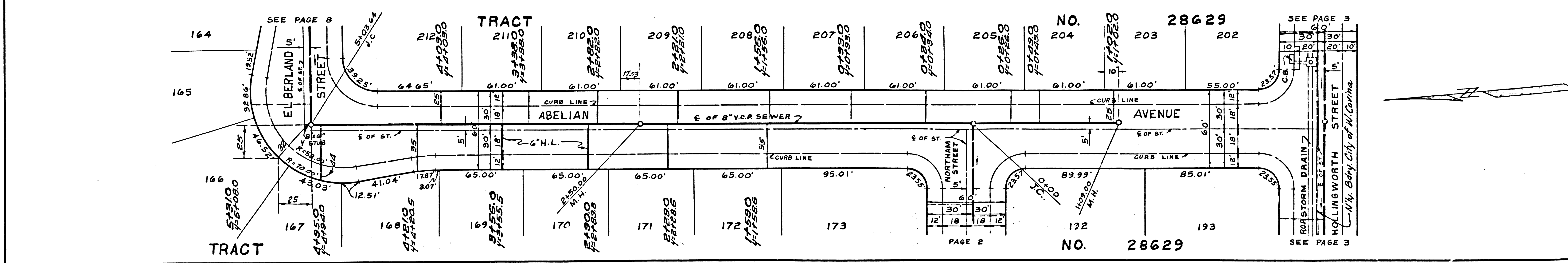
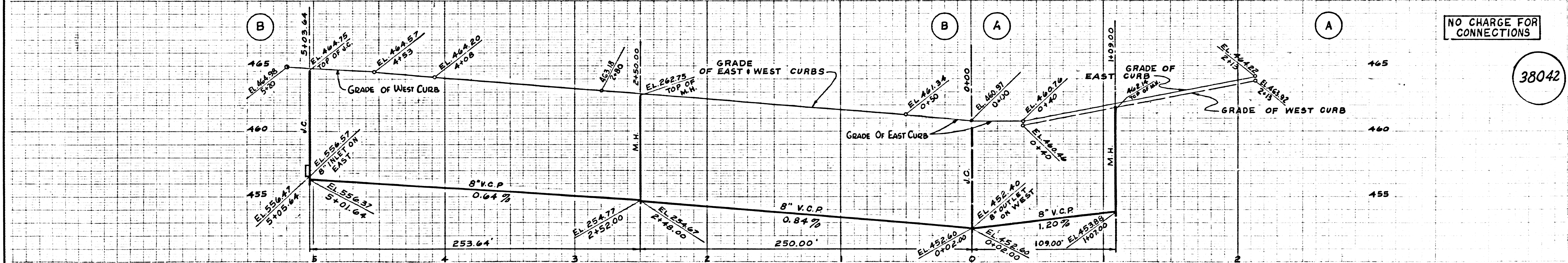
NO CHARGE FOR CONNECTIONS

38041



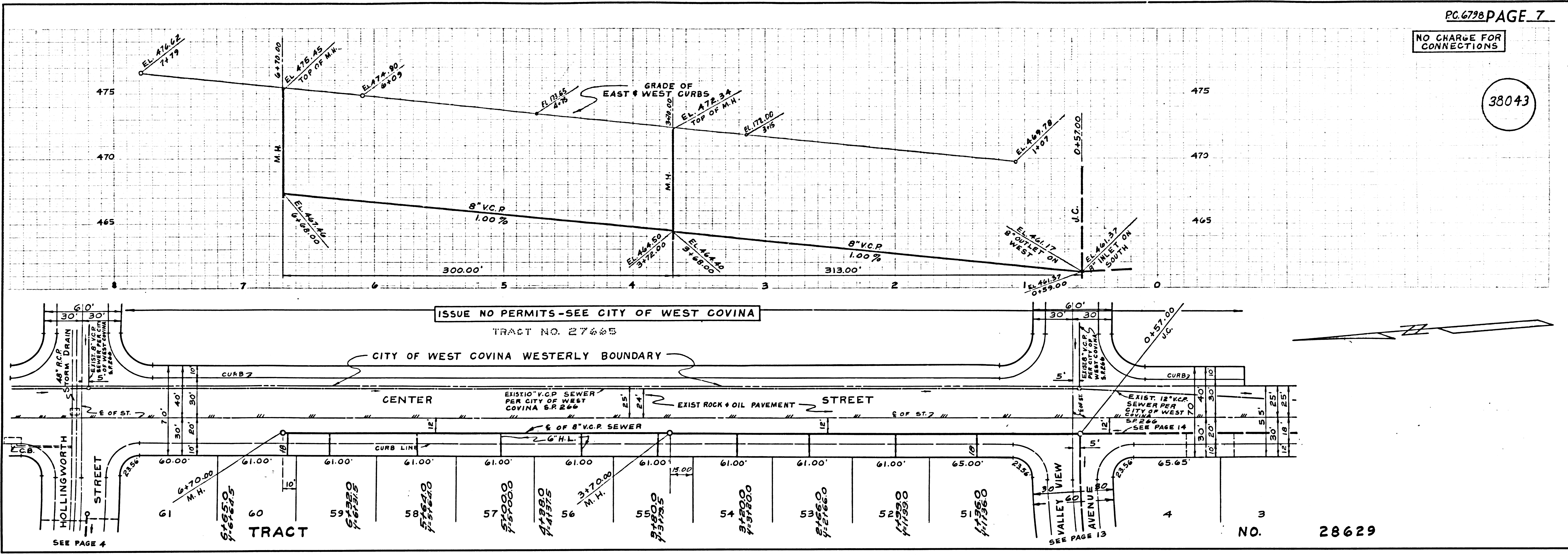
NO CHARGE FOR CONNECTIONS

38042



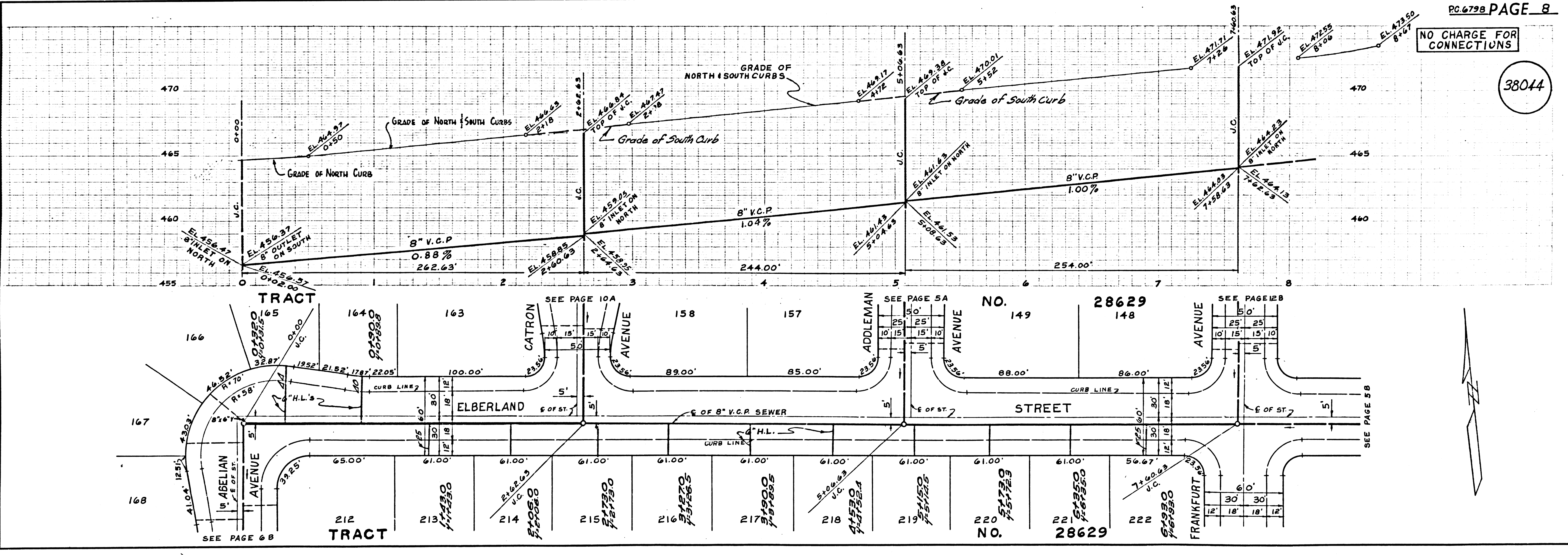
NO CHARGE FOR CONNECTIONS

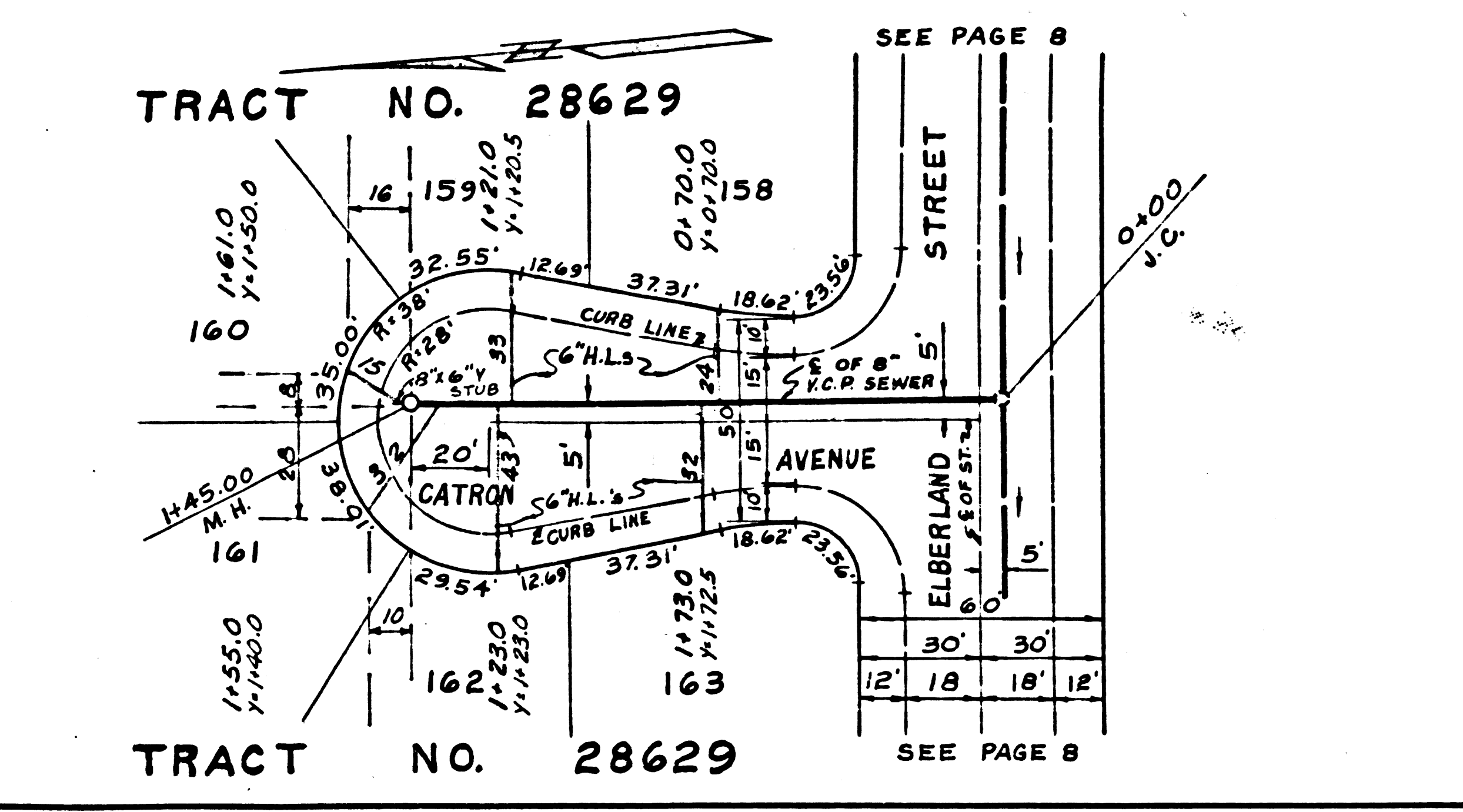
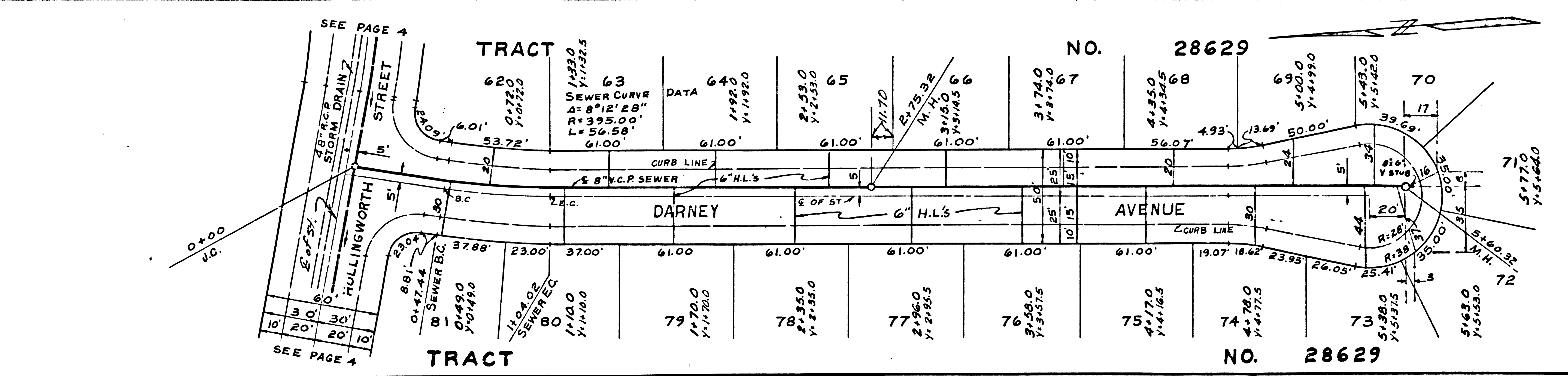
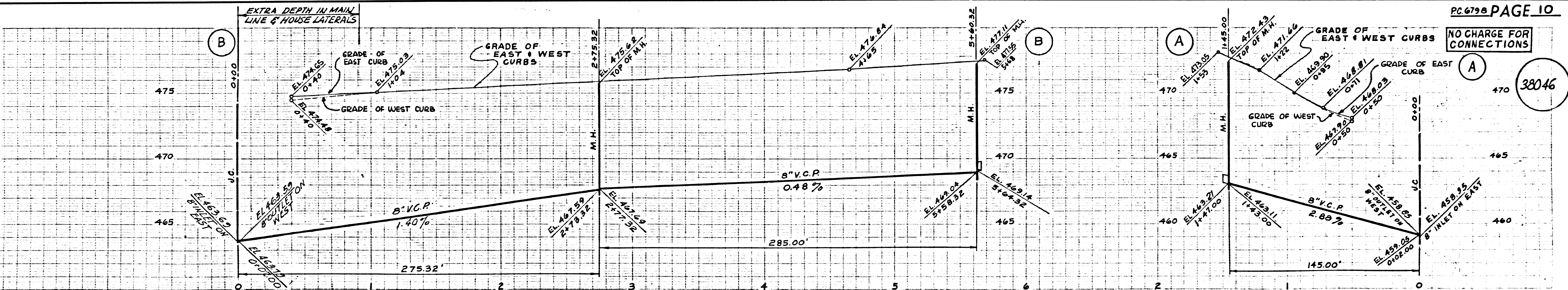
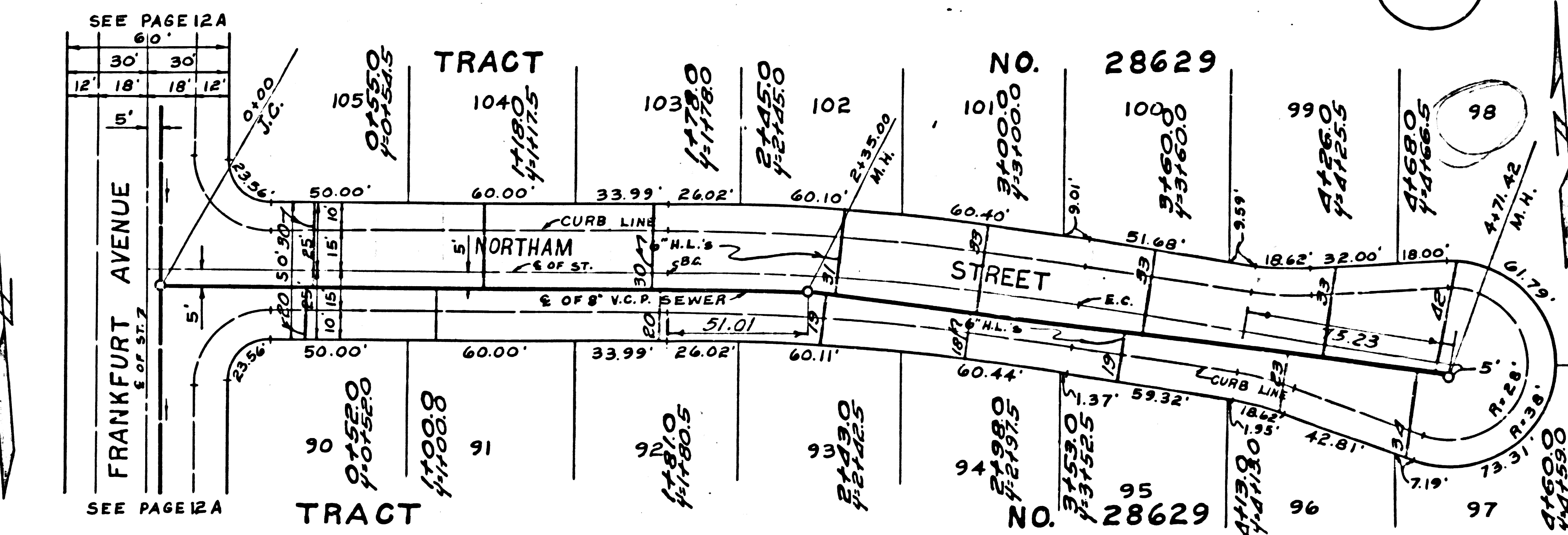
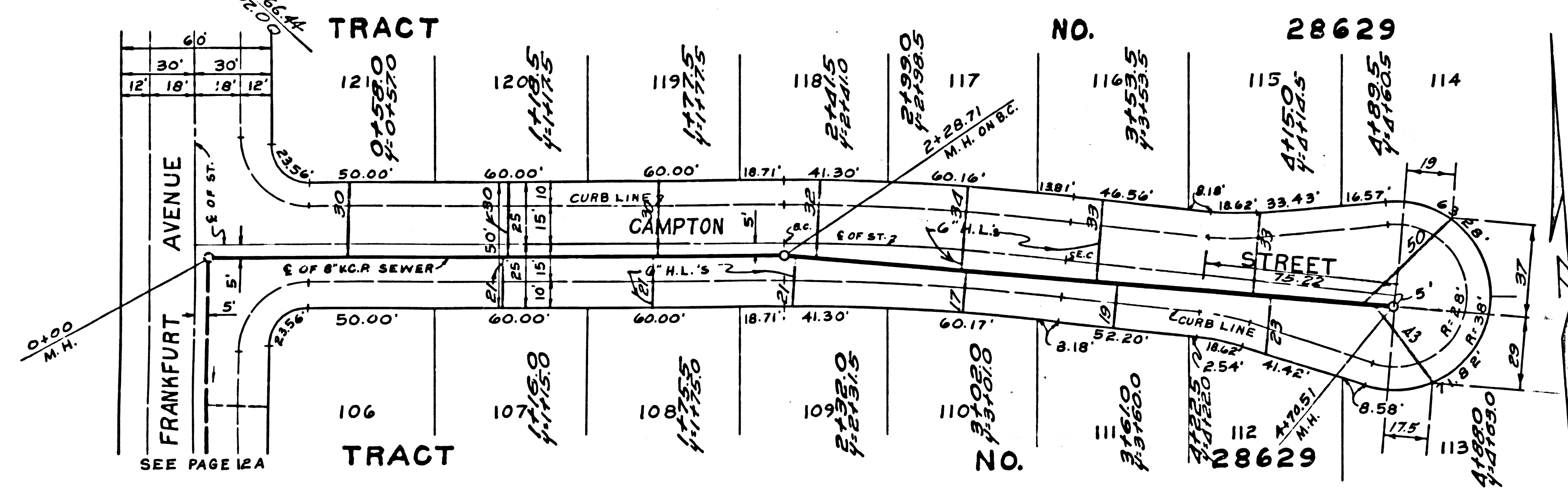
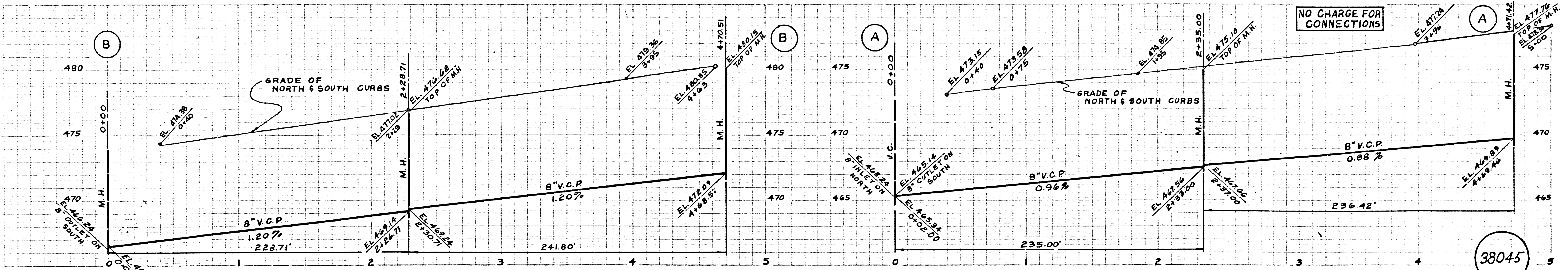
38043



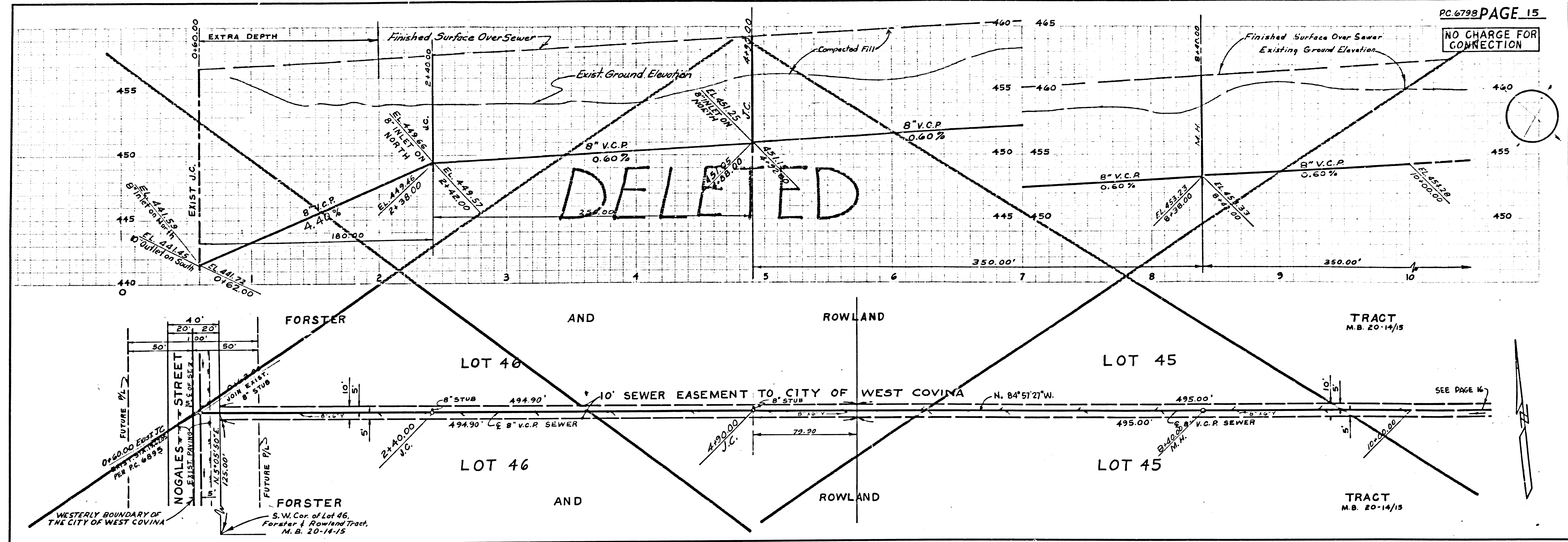
NO CHARGE FOR CONNECTIONS

38044





NO CHARGE FOR CONNECTION



NO CHARGE FOR CONNECTION

38051

