

B.M. 54 6078 ELEV. 1151.838  
 LOS ANGELES COUNTY ROAD DIST. B.M.  
 200' IN CHAIN EAST 100' EAST OF  
 HIGHRISE ROAD AND 0.20 MILES SOUTH  
 OF LANTHORNE BLVD.  
 PALOS VERDES QUAD. 1960

22. THE FOLLOWING CONDITIONS SHALL APPLY TO SEWER CONSTRUCTION IN AREAS SUBJECT TO CREEP:  
 a) THE PIPE AND RIGID BLOCKS SHALL BE PLACED SO THAT AT ALL POINTS THEY SHALL BE COMPLETELY BURIED IN FIRM STABLE BEDROCK MATERIAL OR CONTROLLED COMPACTED FILLED GROUND OF 90% DENSITY OF COMPACTION OR GREATER.  
 b) SPECIFIC APPROVAL OF THE COMPLETED INSTALLATION IS REQUIRED BY THE GEOLOGICAL CONSULTANT AND SOILS ENGINEER.  
 c) MANHOLES SHALL BE STANDARD STRUCTURES PER S-104.

DOUBLE SCALE  
 LOMITA BLDG. DIST. NO. 12

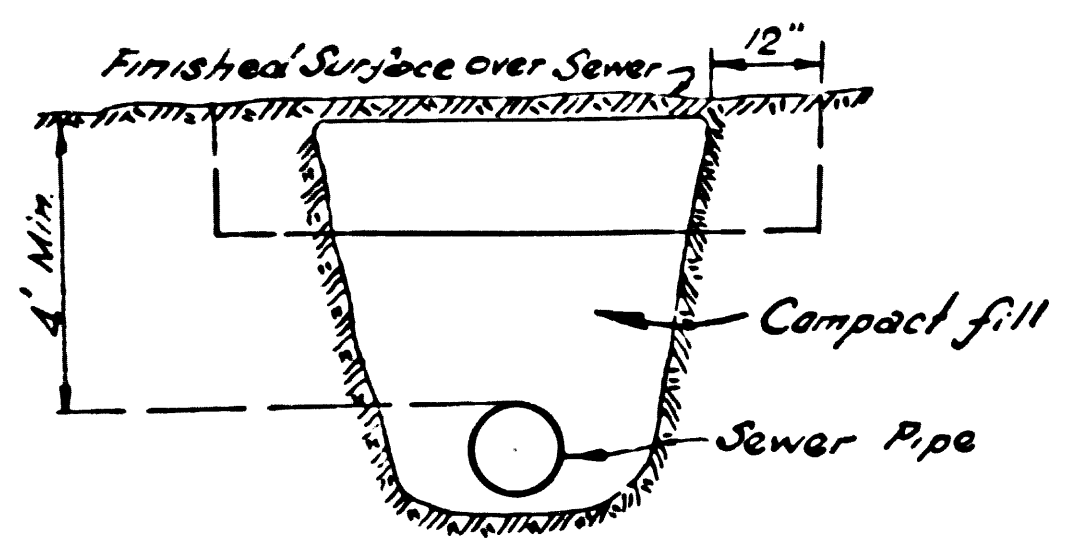
PROFILE ALIGNMENT AND GRADE OF  
 SANITARY SEWERS P.C. 6800  
 PAGE 1

TRACT NO. 28750  
 PRIVATE CONTRACT NO. 6800

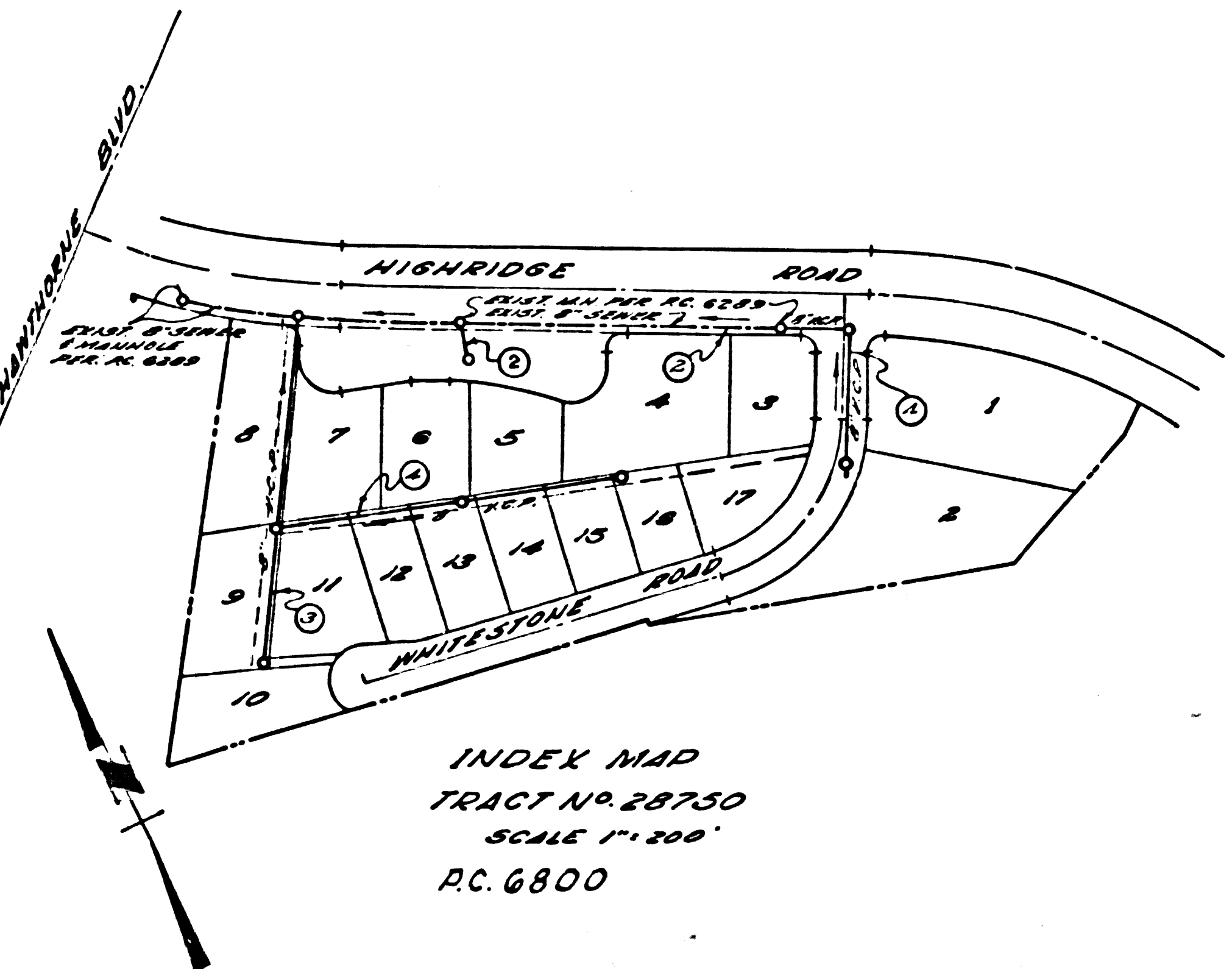
W.S. 27  
 2 SHEETS, 4 PAGES  
 NOVEMBER 1963  
 PREPARED IN THE OFFICES OF

36773

BAFFLE BOARD DETAIL  
 No Scale



- NOTES:  
 1. Each end of Baffle Board will extend one foot into undisturbed ground.  
 2. The upper layer of Backfill to be one foot min. top of soil. Top soil shall be tamped in place and planted with mustard and rye grass seed & adequately watered until growth is restored.  
 3. Baffle Boards shall be spaced so that the top of the lower board shall be level with the bottom of the next higher board



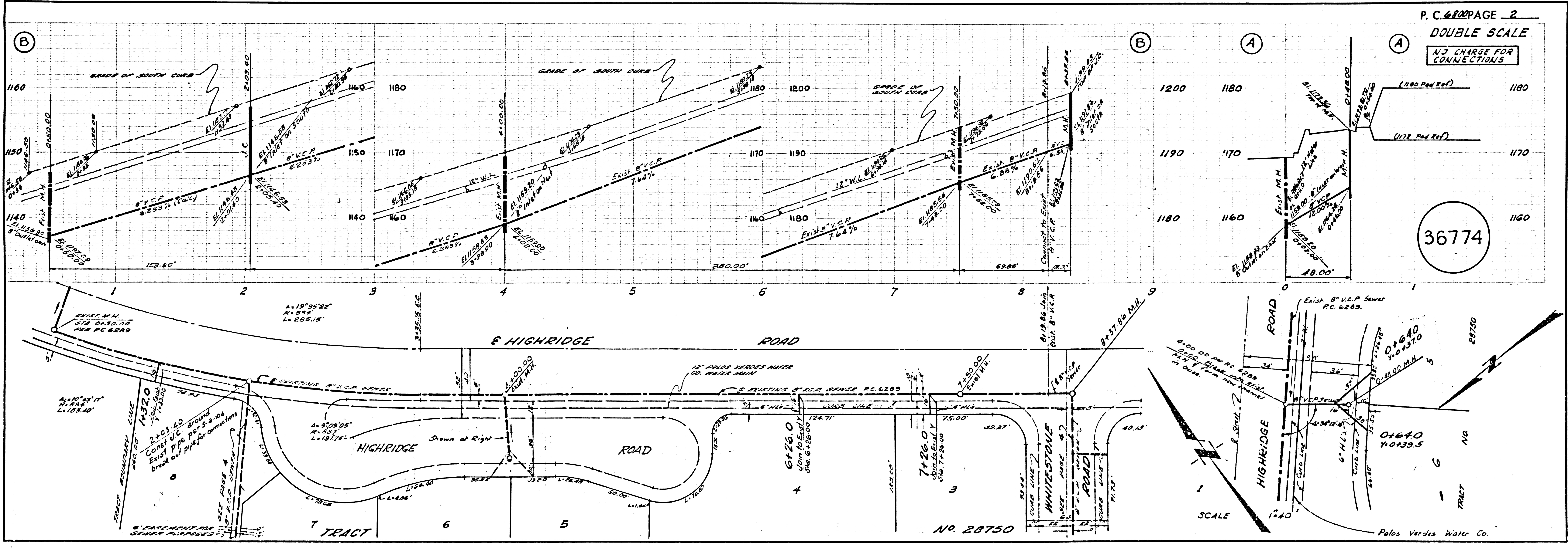
- NOTES:  
 1. PROVIDE STAKES ON THE PROPERTY LINE OR PROPERTY LINES PRODUCED AT RIGHT ANGLES TO THE SEWER LINE AT THE CENTER LINE OF EACH MANHOLE.  
 2. NO REPRESENTATIVE OF THE COUNTY ENGINEER WILL SURVEY OR LAY OUT ANY PORTION OF THE WORK.  
 3. THE PRIVATE ENGINEER SHALL FURNISH THE COUNTY ENGINEER WITH GRADE SHEETS AND STATIONING FOR ALL HOUSE LATERALS AND T BRANCHES AND SHALL PROVIDE STAKES FOR THEM AT THEIR PROPER LOCATIONS WITH STATIONING PLAINLY MARKED. ALL HOUSE LATERALS SHALL BE CONSTRUCTED IN A STRAIGHT ALIGNMENT AT RIGHT ANGLES FROM THE MAIN LINE SEWER EXCEPT AS SHOWN ON THE PLANS AND CHANGE IN ALIGNMENT SHALL BE INDICATED IN WRITING BY THE PRIVATE ENGINEER.  
 4. THE PRIVATE ENGINEER SHALL FURNISH THE HOUSE LATERAL DETAIL AT THE PROPERTY LINE BELOW THE TOP OF CURB ELEVATION FOR EACH HOUSE LATERAL ON THE GRADE SHEET.  
 5. NO REVISIONS SHALL BE MADE IN THESE PLANS WITHOUT THE APPROVAL OF THE COUNTY ENGINEER.  
 6. THE CONTRACTOR SHALL NOTIFY THE CONSTRUCTION DIVISION BY TELEPHONE, MADISON 9-4742, EXT. 81581, AT LEAST TWENTY (20) HOURS BEFORE STARTING ANY WORK UNDER THIS CONTRACT.  
 7. MANHOLES SHALL BE BRICK SEWER STRUCTURES PER S-104. PRECAST CONCRETE MANHOLES PER S-135 OR S-173 MAY BE USED AS AN ALTERNATE IN LOCATIONS APPROVED BY THE COUNTY ENGINEER.  
 8. USE STANDARD MANHOLE FRAMES AND COVERS, S-177, EXCEPT AS NOTED.  
 9. MANHOLE TOPS IN UNIMPROVED RIGHTS OF WAY TO BE 2 1/2 INCHES ABOVE FINISHED GRADE.  
 10. USE EXTRA STRENGTH PIPE. ALL PIPE IS STANDARD DEPTH EXCEPT AS NOTED.  
 11. USE MECHANICAL COMPRESSION JOINTS FOR ALL VCP PER SPECIFICATIONS SECTION 56, 40, 1-10.  
 12. ALL STATE AND LOCAL TRENCH SAFETY ORDINANCE WILL BE RIGIDLY ENFORCED.  
 13. IF A POWER POLE IS WITHIN THREE FEET OF THE SEWER, THE SEWER SHALL BE ENCASED, PER S-172, CASE M, TWO FEET ON EACH SIDE FROM THE POINT OF INTERFERENCE.  
 14. IF DURING THE COURSE OF CONSTRUCTION IT IS DETERMINED THAT THERE IS LESS THAN FOUR FEET OF COVER OVER THE TOP OF A MAIN LINE OR HOUSE LATERAL V.C.P. SEWER WHICH IS NOT INDICATED ON THE PLANS, THE PIPE SHALL BE ENCASED PER S-172, CASE M, UNLESS OTHERWISE APPROVED BY THE COUNTY ENGINEER.  
 15. HOUSE LATERALS TO BE CONSTRUCTED WITH INVERTS AT PROPERTY LINE, 3" BELOW CURB GRADE EXCEPT AS NOTED.  
 16. RESURFACE ALL TRENCHES WITHIN PAVED AREAS TO MEET L.A. COUNTY ROAD DEPT. OR CALIFORNIA STATE HIGHWAY REQUIREMENTS IN ACCORDANCE WITH PERMITS.  
 17. FOR ALLOWABLE LEAKAGE TEST USE FORMULA NO. 1, 2, 3, 4, 5, 6, 7, 8, 9, 10, 11, 12, 13, 14, 15, 16, 17, 18, 19, 20, 21, 22, 23, 24, 25, 26, 27, 28, 29, 30, 31, 32, 33, 34, 35, 36, 37, 38, 39, 40, 41, 42, 43, 44, 45, 46, 47, 48, 49, 50, 51, 52, 53, 54, 55, 56, 57, 58, 59, 60, 61, 62, 63, 64, 65, 66, 67, 68, 69, 70, 71, 72, 73, 74, 75, 76, 77, 78, 79, 80, 81, 82, 83, 84, 85, 86, 87, 88, 89, 90, 91, 92, 93, 94, 95, 96, 97, 98, 99, 100.  
 18. IF DURING THE COURSE OF CONSTRUCTION IT IS DETERMINED THAT THERE IS LESS THAN FOUR FEET OF COVER OVER THE TOP OF A MAIN LINE OR HOUSE LATERAL V.C.P. SEWER WHICH IS NOT INDICATED ON THE PLANS, THE PIPE SHALL BE ENCASED PER S-172, CASE M, UNLESS OTHERWISE APPROVED BY THE COUNTY ENGINEER.  
 19. CONSTRUCTION IN FILLED AREAS:  
 a) ACCEPTABLE CERTIFICATION OF CONSTRUCTION TEST RESULTS SHALL BE SUBMITTED TO THE CONSTRUCTION DIVISION. COMPACTION TESTS ARE TO BE MADE IN ACCORDANCE WITH A.S.T.M. STANDARD METHOD OF TEST D 1557-62T. (90% MOISTURE) IS IDENTIFIED IN FILLED AREAS WHERE THE RELATIVE DENSITY OF CONSTRUCTION IS LESS THAN 90%. (90% THE RELATIVE DENSITY OF CONSTRUCTION IS LESS THAN 90%, ALL MAIN LINES AND HOUSE LATERALS SHALL BE ENCASED PER S-172, CASE M, UNLESS OTHERWISE APPROVED BY THE COUNTY ENGINEER. (b) IF THE RELATIVE DENSITY OF CONSTRUCTION IS 90% OR GREATER, THE SPECIAL PROVISIONS IN (c) ARE NOT REQUIRED.  
 20. THE PRESENCE OF ANY UNDERGROUND UTILITY SHALL BE DETERMINED BEFORE ANY TRENCHING OR CONSTRUCTION IS STARTED. THE CONTRACTOR SHALL BE RESPONSIBLE FOR THE LOCATION AND DEPTH OF ALL UTILITIES. THE CONTRACTOR SHALL BE RESPONSIBLE FOR THE LOCATION AND DEPTH OF ALL UTILITIES. THE CONTRACTOR SHALL BE RESPONSIBLE FOR THE LOCATION AND DEPTH OF ALL UTILITIES.  
 21. NO CONNECTIONS FOR THE DISPOSAL OF INDUSTRIAL WASTES SHALL BE MADE TO SEWERS SHOWN ON THESE DRAWINGS WITHOUT WRITTEN PERMISSION FROM THE CHIEF ENGINEER AND GENERAL MANAGER OF THE COUNTY SANITATION DISTRICTS.

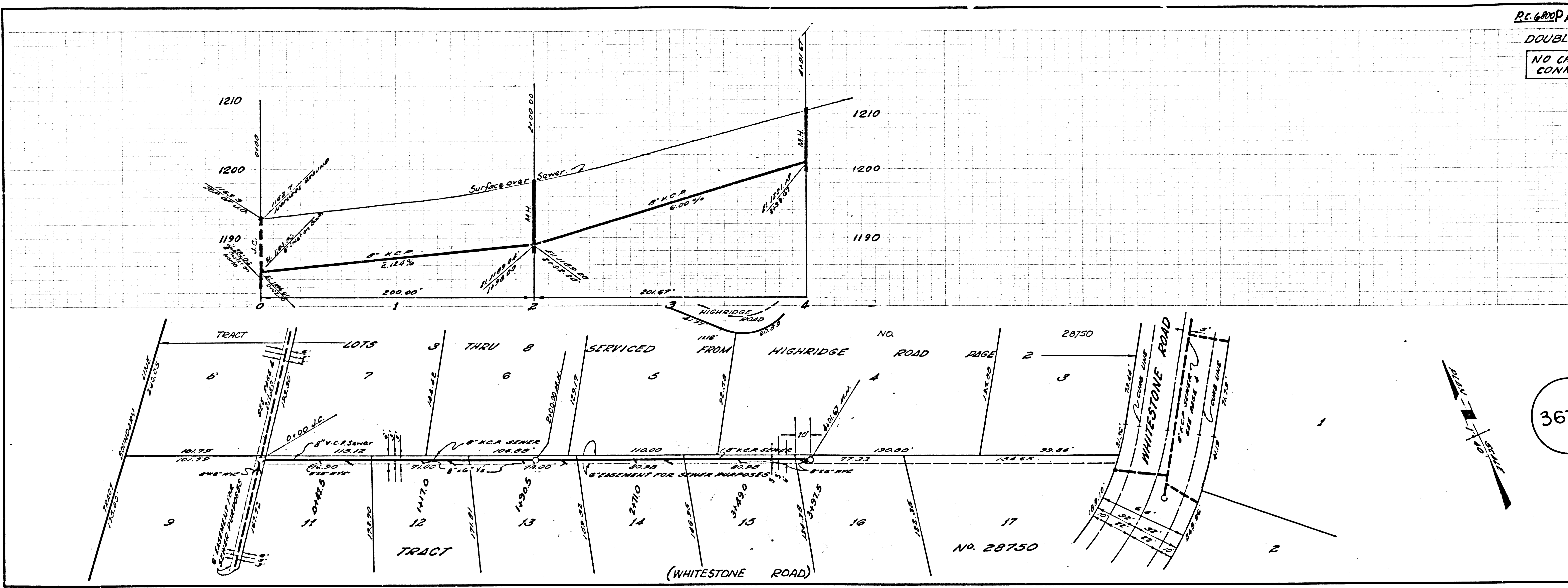
NOTE:  
 GRADES TO WHICH THIS IMPROVEMENT IS TO BE CONSTRUCTED ARE SHOWN ON PLANS AND PROFILES. GRADE POINTS FOR TOP OF CURB, CENTER LINE OF STREETS, OR CENTER LINE OF ALLEYS ARE SHOWN BY CIRCLES ON PROFILES. AT ALL POINTS BETWEEN DESIGNATED POINTS THE GRADE SHALL BE ESTABLISHED SO AS TO CONFORM TO A STRAIGHT LINE DRAWN BETWEEN SAID DESIGNATED POINTS. ELEVATIONS ARE IN FEET ABOVE U.S.C. & G.S. SEA LEVEL DATUM OF 1929. THIS DRAWING AND THE DATA HEREON ARE HEREBY MADE A PART OF THE SPECIFICATIONS. WORK SHALL BE CONSTRUCTED ACCORDING TO STANDARD SPECIFICATIONS DATED MAY 25, 1962, ON FILE IN THE OFFICE OF THE COUNTY ENGINEER AND SHALL BE PROSECUTED ONLY IN THE PRESENCE OF THE COUNTY ENGINEER. BEFORE WORK CAN BE STARTED, THE CONTRACTOR MUST OBTAIN A PERMIT TO EXCAVATE IN COUNTY STREETS FROM THE L.A. COUNTY ROAD DEPT., DISTRICT OFFICE NO. 3, AND PAY A FEE TO THE COUNTY ENGINEER, ROOM 380, COUNTY ENGINEERING BUILDING, 108 WEST SECOND STREET, PALOS VERDES, CALIFORNIA. APPROVAL OF THIS PLAN BY THE COUNTY OF LOS ANGELES DOES NOT CONSTITUTE A REPRESENTATION AS TO THE ACCURACY OF THE LOCATION OF OR THE EXISTENCE OR NON-EXISTENCE OF ANY UNDERGROUND UTILITY PIPE, OR STRUCTURE WITHIN THE LIMITS OF THIS PROJECT. THIS NOTE APPLIES TO ALL PAGES.  
 IF WORK IS TO BE DONE IN A STATE HIGHWAY, A PERMIT MUST BE OBTAINED FROM THE STATE OF CALIFORNIA, DIVISION OF HIGHWAYS, 120 SOUTH SPRING STREET, LOS ANGELES, CALIFORNIA.

COUNTY OF LOS ANGELES, CALIFORNIA  
 JOHN A. LAMBIE, COUNTY ENGINEER  
 J. D. PARKHURST, CHIEF ENGINEER  
 APPROVED BY: [Signature] ASSISTANT SANITATION ENGINEER  
 APPROVED BY: [Signature] OFFICE ENGINEER  
 SUBMITTED BY: [Signature] PALOS VERDES COUNTY WATER DISTRICT ENGINEER  
 CHECKED BY: [Signature] NO. C.E. NO. 13706

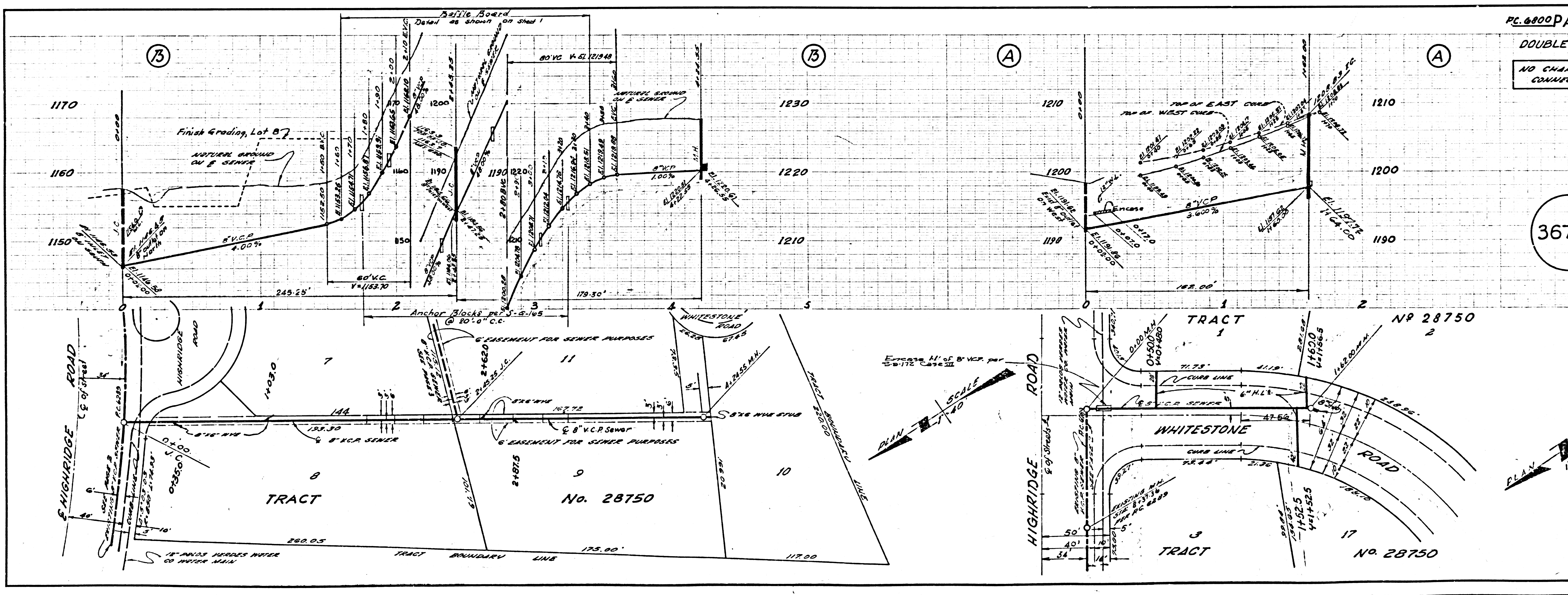
COLLECT CHARGES AS INDICATED  
 Ralph Schaefer

J.N. 0361.99

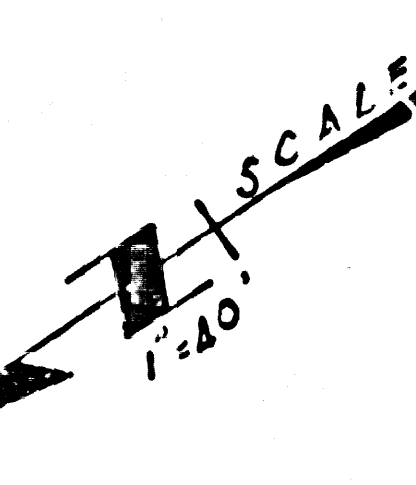




36775



36776



000001-02-1-KAC:W-10-1-1