

DOUBLE SCALE
CALABASAS BLDG. DIST. NO. 9.1

PROFILE ALIGNMENT AND GRADE OF
SANITARY SEWERS P.C. 6802
 PAGE 1

TO BE CONSTRUCTED IN
TRACT N^o 28120
PRIVATE CONTRACT NO. 6802

W.S. 90
 3 SHEETS, 6 PAGES
 SCALE: VERT. 1"=4'
 HORIZ. 1"=40'
 Dec. 1, 1963
 PREPARED IN THE OFFICES OF
 ENGINEERING DIVISION
 1001 E. Calabazas Blvd., Pasadena, California
 By: *J. S. Grant*
 REG. C. E. NO. 3553

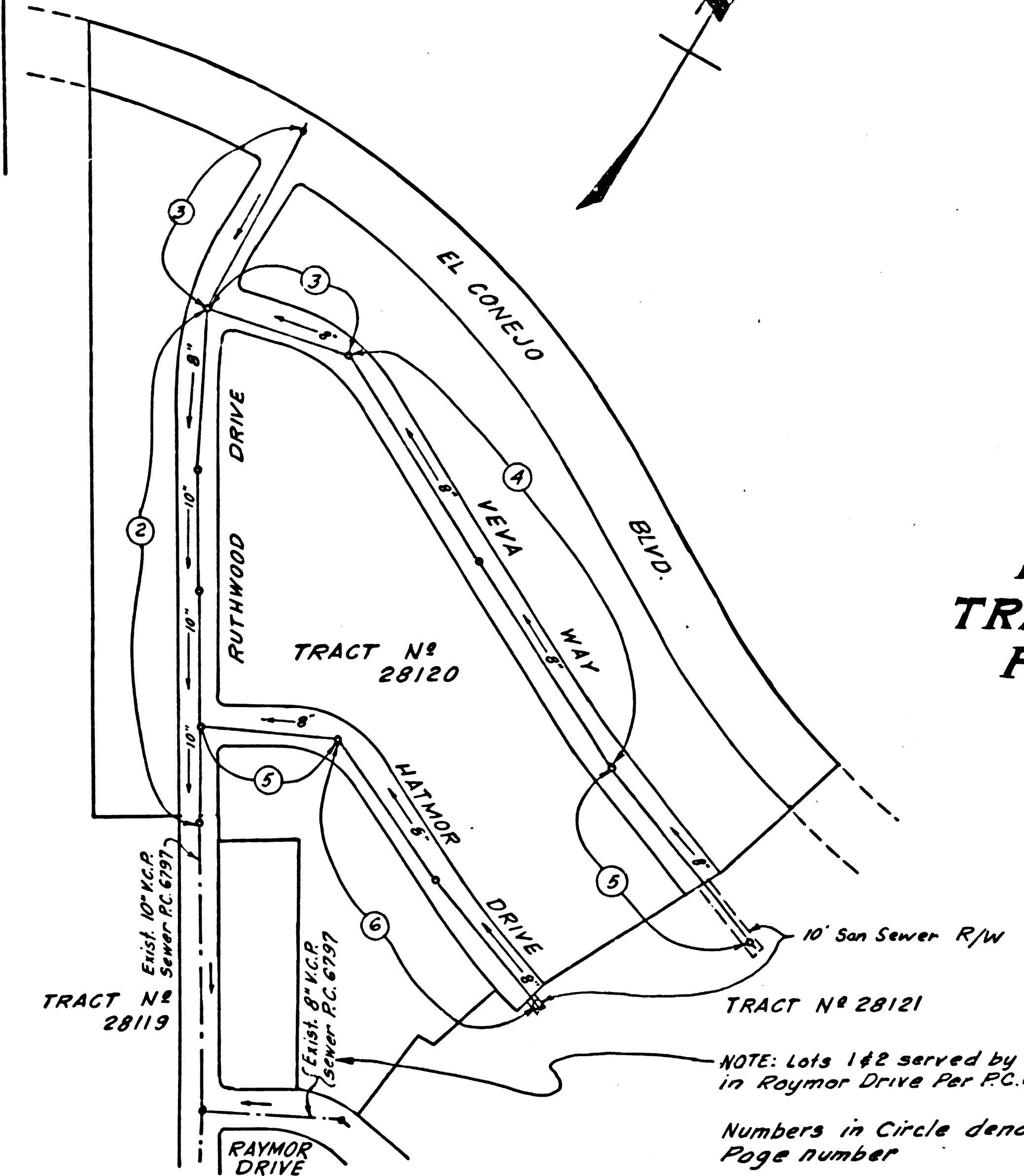
FOR LEGEND SEE PLAN NO. S-64

NOTE:
 GRADES TO WHICH THIS IMPROVEMENT IS TO BE CONSTRUCTED ARE SHOWN ON PLANS AND PROFILES. GRADE POINTS FOR TOP OF CURBS, CENTER LINE OF STREETS, OR CENTER LINE OF ALLEYS ARE SHOWN BY CIRCLES ON PROFILES. AT ALL POINTS BETWEEN DESIGNATED POINTS THE GRADE SHALL BE ESTABLISHED SO AS TO CONFORM TO A STRAIGHT LINE DRAWN BETWEEN SAID DESIGNATED POINTS. ELEVATIONS ARE IN FEET ABOVE U.S.C. & G.S. SEA LEVEL DATUM OF 1929. THIS DRAWING AND THE DATA HEREON ARE HEREBY MADE A PART OF THE SPECIFICATIONS. WORK SHALL BE CONSTRUCTED ACCORDING TO STANDARD SPECIFICATIONS DATED MAY 23, 1962, ON FILE IN THE OFFICE OF THE COUNTY ENGINEER AND SHALL BE PROSECUTED ONLY IN THE PRESENCE OF THE COUNTY ENGINEER. BEFORE WORK CAN BE STARTED, THE CONTRACTOR MUST OBTAIN A PERMIT TO EXCAVATE IN COUNTY STREETS FROM THE L.A. COUNTY ROAD DEPT., DISTRICT OFFICE NO. 1001 E. CALABAZAS BLVD., PASADENA, CALIF. AND PAY A FEE TO THE COUNTY ENGINEER, ROOM 300, COUNTY ENGINEERING BUILDING, 100 WEST SECOND STREET, LOS ANGELES, CALIF. SUFFICIENT TO COVER THE COST OF CONSTRUCTION INSPECTION AND RECORD PLANS. APPROVAL OF THIS PLAN BY THE COUNTY OF LOS ANGELES DOES NOT CONSTITUTE A REPRESENTATION AS TO THE ACCURACY OF THE LOCATION OR OF THE EXISTENCE OR NON-EXISTENCE OF ANY UNDERGROUND UTILITY PIPE, OR STRUCTURE WITHIN THE LIMITS OF THIS PROJECT. THIS NOTE APPLIES TO ALL PAGES. IF WORK IS TO BE DONE IN A STATE HIGHWAY, A PERMIT MUST BE OBTAINED FROM THE STATE OF CALIFORNIA, DIVISION OF HIGHWAYS, 120 SOUTH SPRING STREET, LOS ANGELES, CALIFORNIA.

COUNTY OF LOS ANGELES, CALIFORNIA
 JOHN A. LAMBIE, COUNTY ENGINEER
 APPROVED BY: *[Signature]* LAS VIRGENES MUNICIPAL WATER DISTRICT
 ASSISTANT SANITATION ENGINEER
 SUBMITTED BY: *[Signature]* APPROVED BY: *[Signature]* OFFICE ENGINEER
 CHECKED BY: *[Signature]* REG. C. E. NO. 13406
 RCE 15061

J.N. 0362.02

B.M. 5Y 5588 ELEV. 770.859
 Set L^oBN in Conc. base of light stand (flood lights) in part. lot of Billingsley's Steak Ranch 1/4^o 320' S & int. Ventura Blvd. & Las Virgenes Road, MALIBU QUAD. 19 60

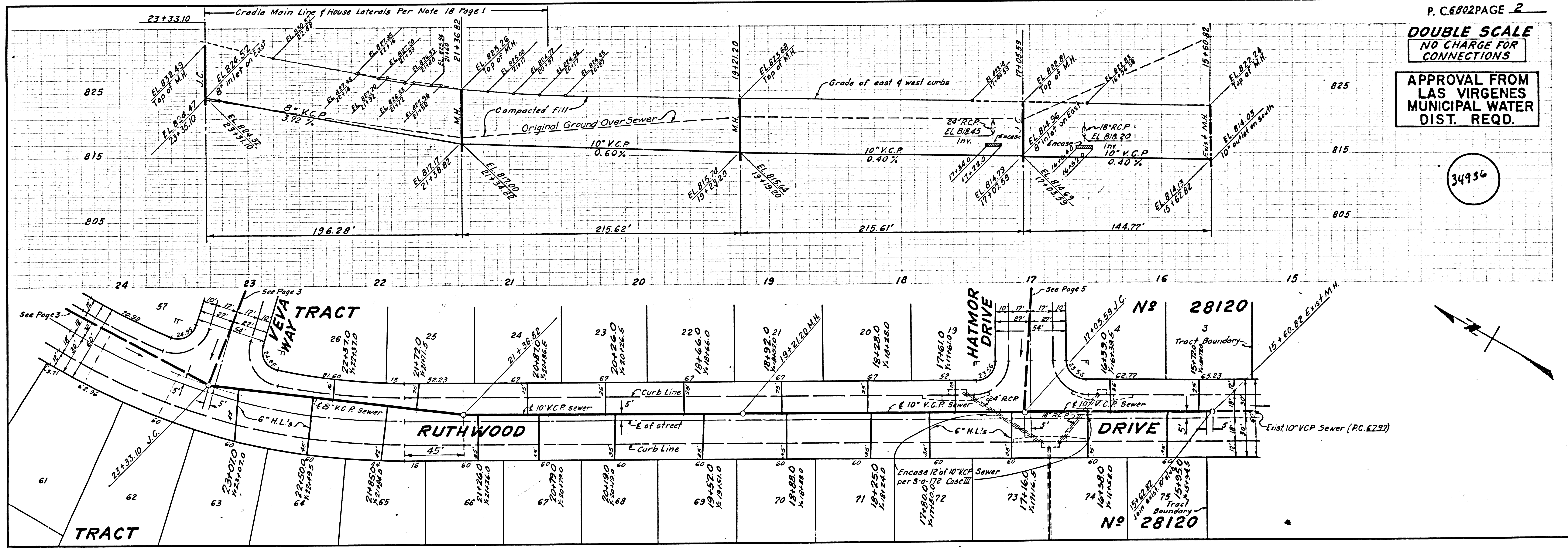


KEY MAP
TRACT N^o 28120
P.C. 6802
 SCALE: 1"=200'

ISSUE NO PERMITS
 UNTIL OUTLET IS
 CONSTRUCTED

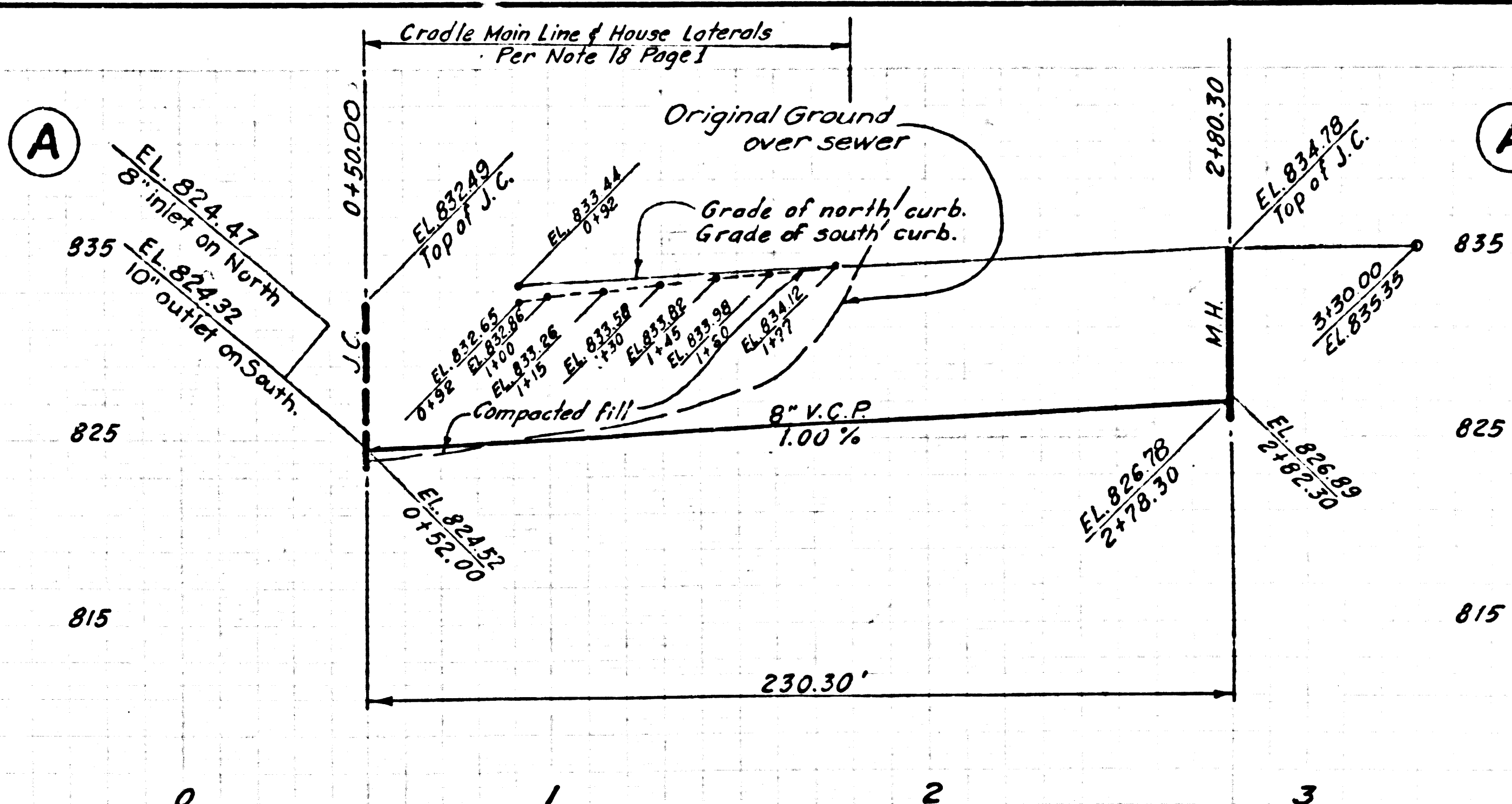
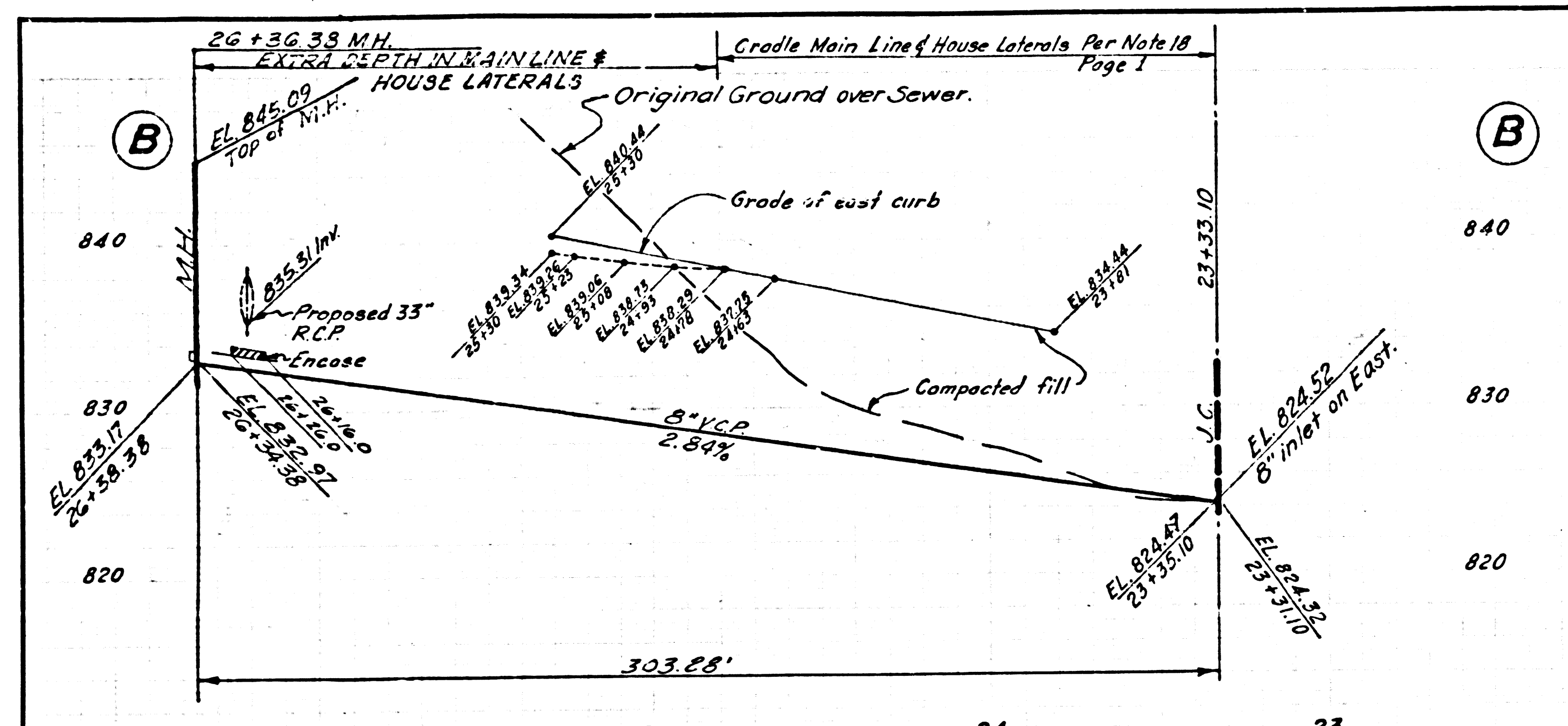
COLLECT CHARGES
 AS INDICATED
L. Curtis 2-18-64

NOTE: Lots 1 & 2 served by Exst. Sewer in Raymor Drive Per P.C. 6797 page 5
 Numbers in Circle denotes Page number



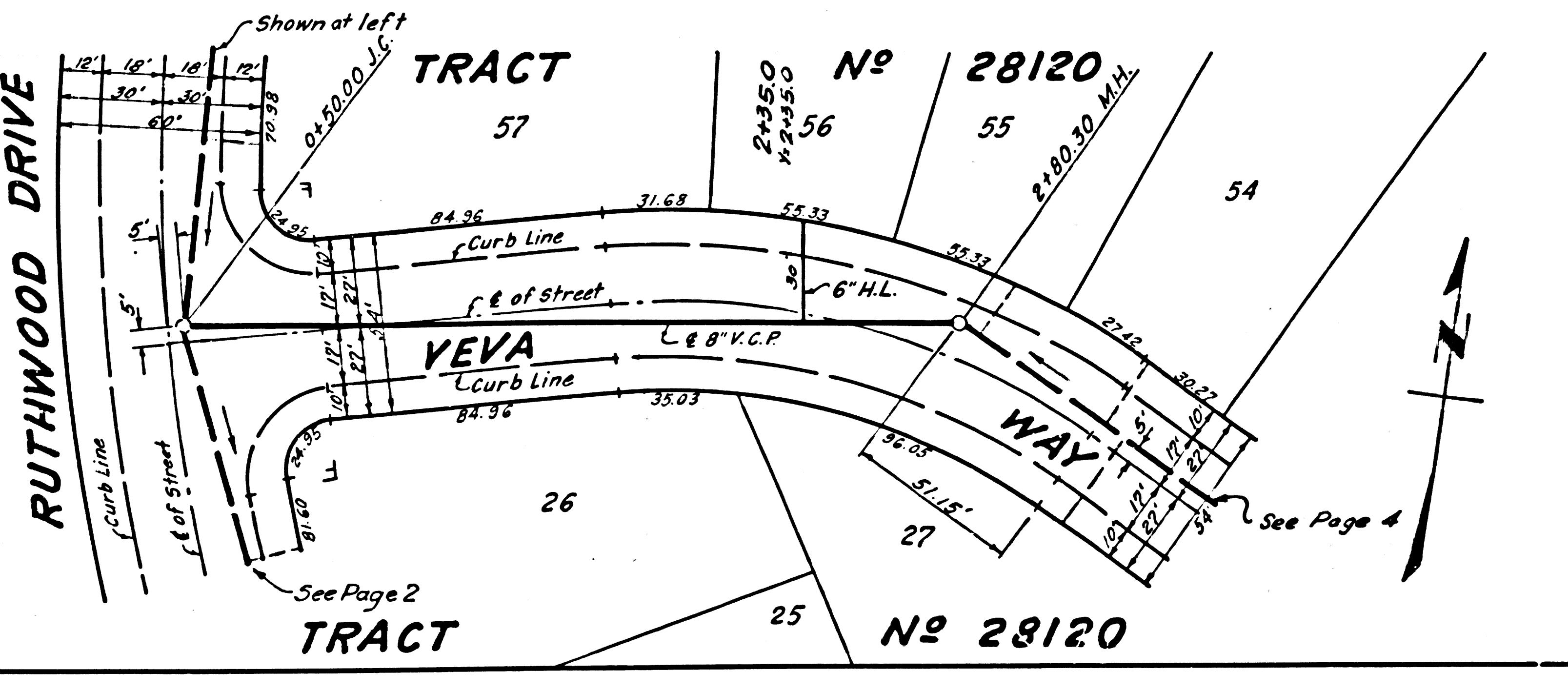
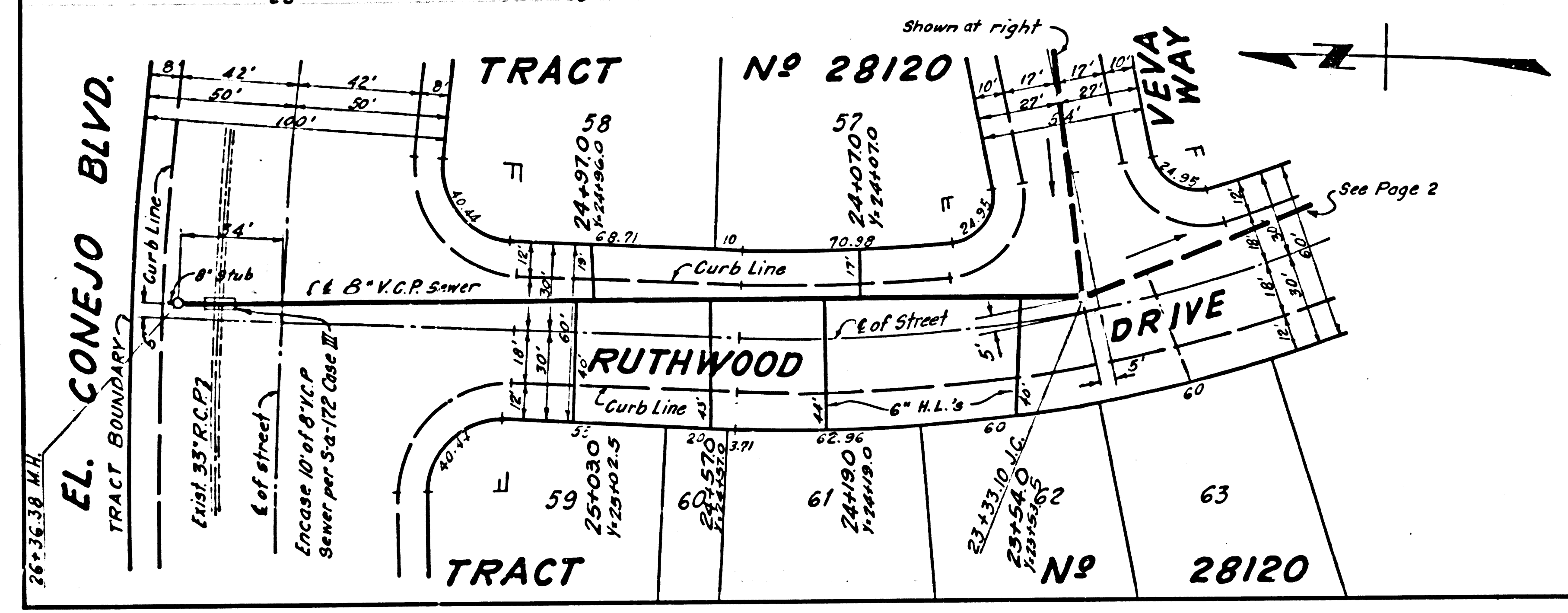
P.C. 6802 PAGE 2
DOUBLE SCALE
NO CHARGE FOR CONNECTIONS
APPROVAL FROM LAS VIRGENES MUNICIPAL WATER DIST. REQD.

34936

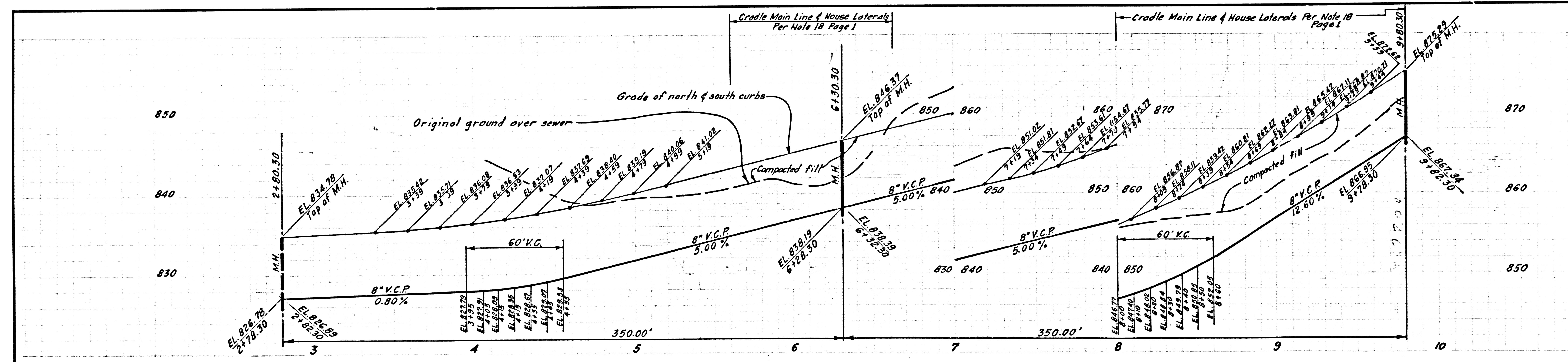


PC. 6802 PAGE 3
DOUBLE SCALE
 NO CHARGE FOR CONNECTIONS
 APPROVAL FROM LAS VIRGENES MUNICIPAL WATER DIST. REQ.

34937

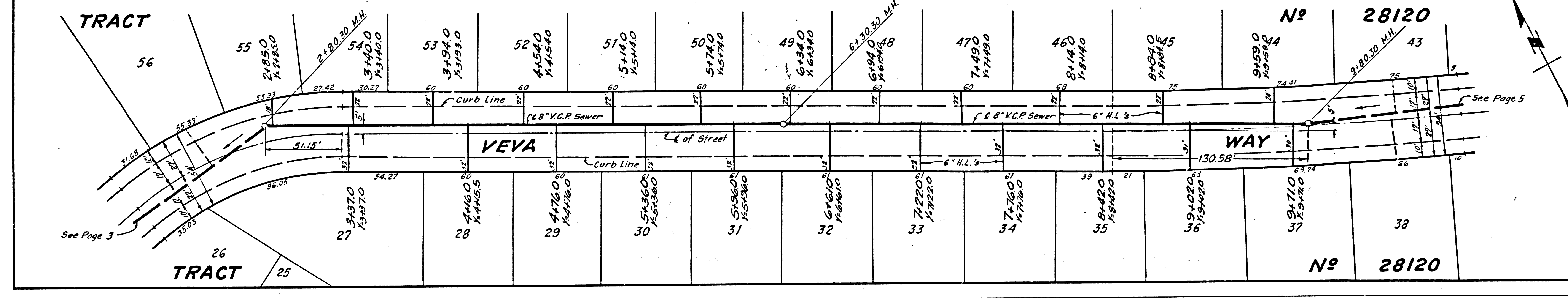


PC. 6802 PAGE 3
 NO. 5815 ON 15057



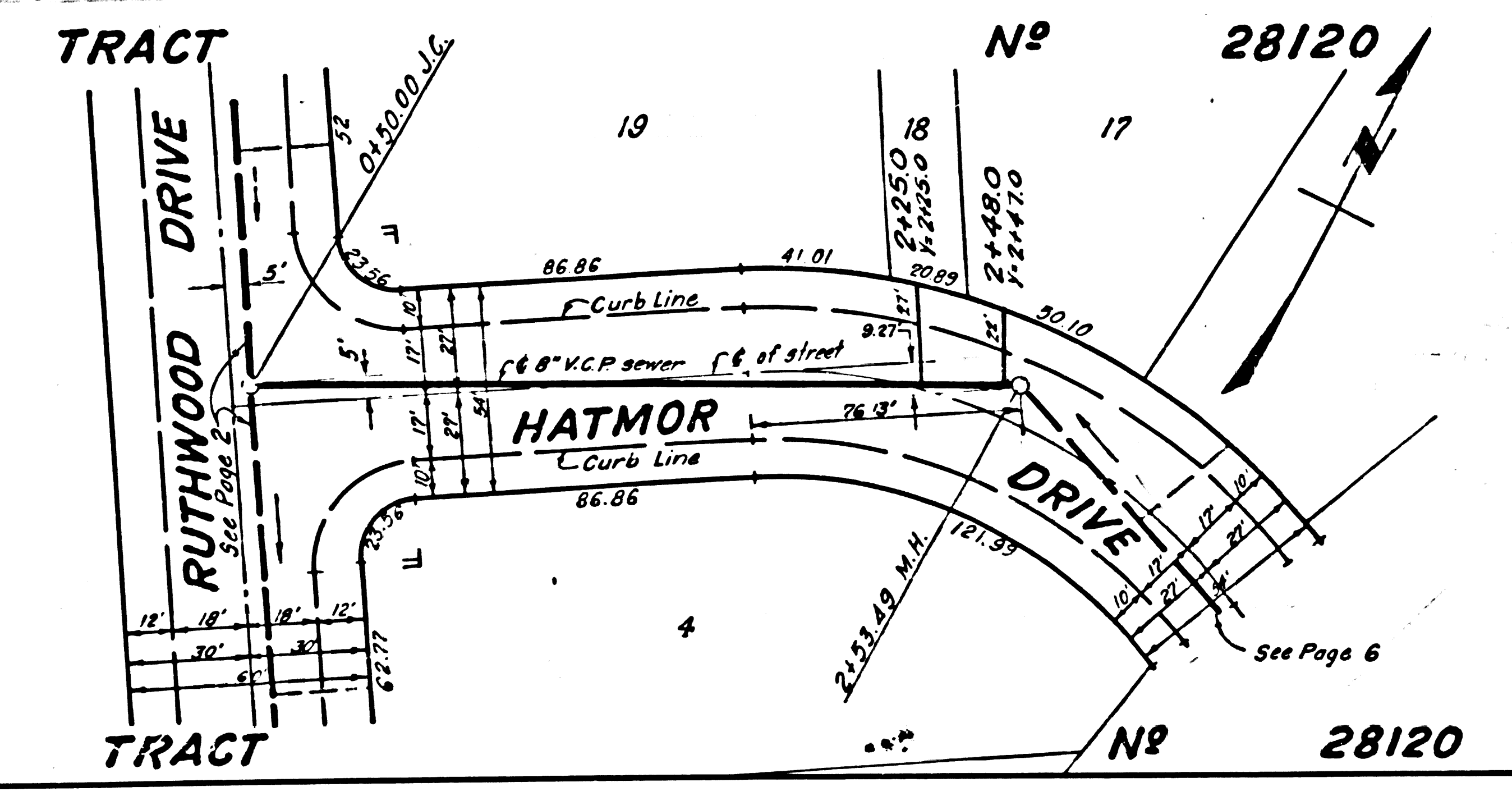
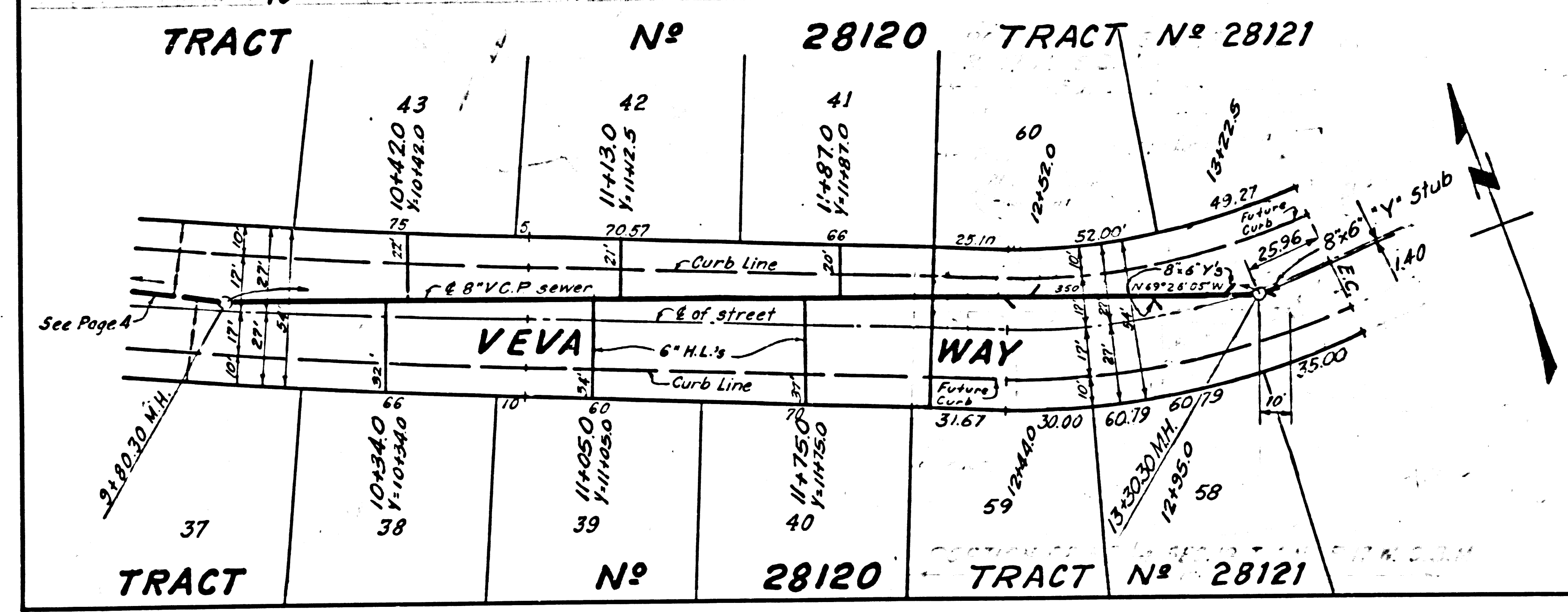
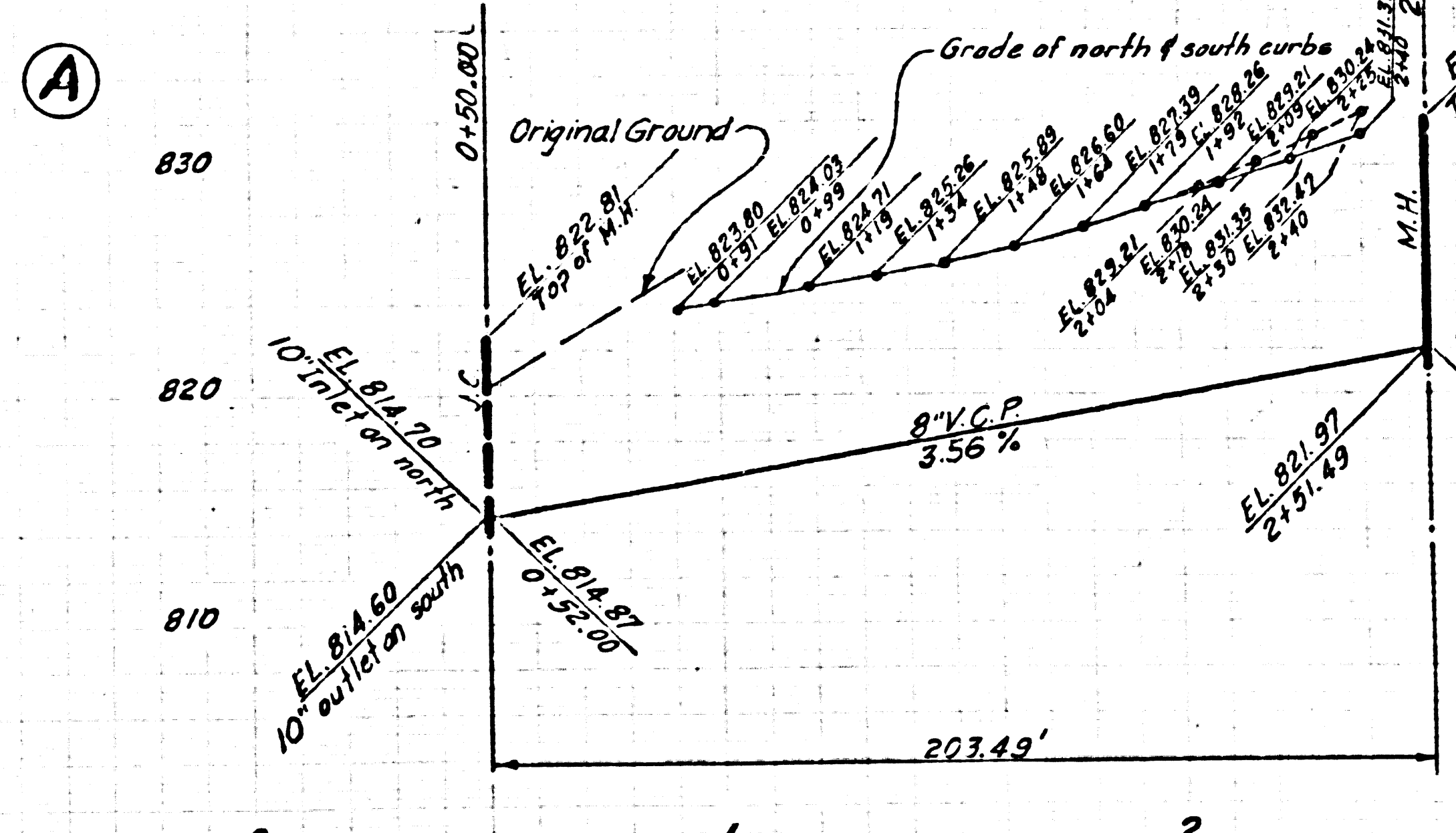
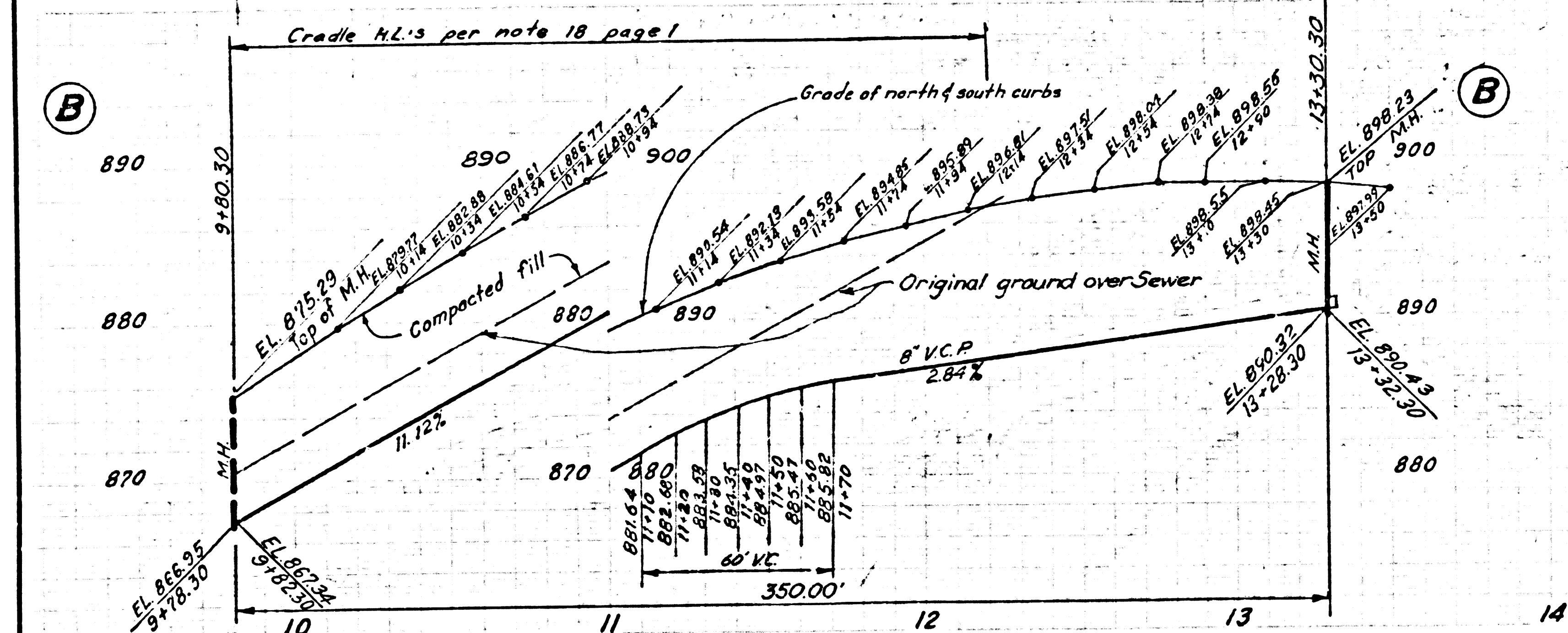
PC. 6802 PAGE 4
DOUBLE SCALE
 NO CHARGE FOR CONNECTIONS
 APPROVAL FROM LAS VIRGENES MUNICIPAL WATER DIST. REQ.

34938



DOUBLE SCALE
NO CHARGE FOR CONNECTIONS

APPROVAL FROM LAS VIRGENES MUNICIPAL WATER DIST. REQD.



DOUBLE SCALE
NO CHARGE FOR CONNECTIONS

APPROVAL FROM LAS VIRGENES MUNICIPAL WATER DIST. REQD.

