

DOUBLE SCALE
CALABASAS BLDG. DIST. NO. 91

PROFILE ALIGNMENT AND GRADE OF
SANITARY SEWERS PAGE 1

TRACT No 28121
PRIVATE CONTRACT NO. 6809

W.S. 90

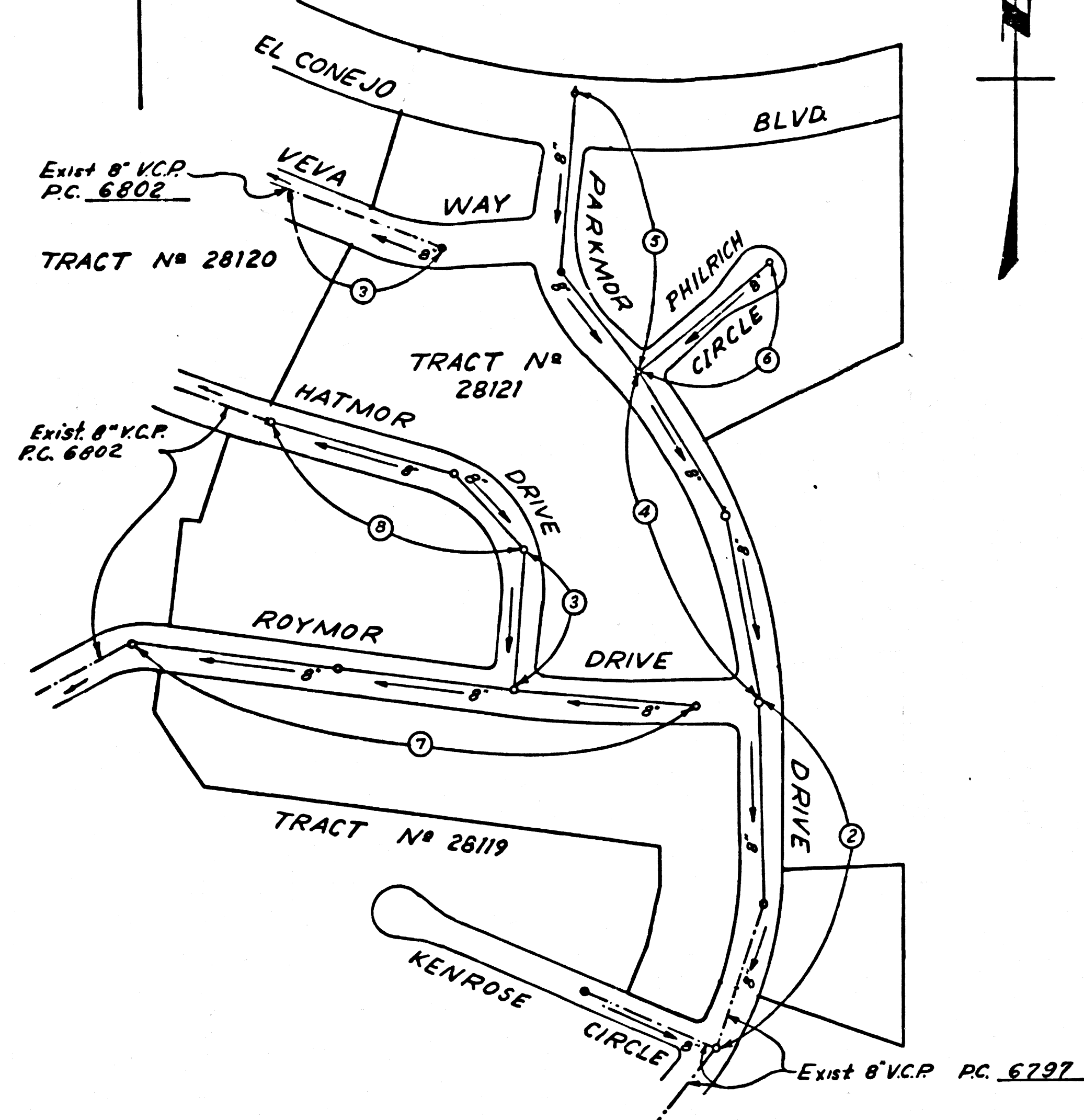
4 SHEETS, 8 PAGES
SCALE: VERT. 1"=8'
HORIZ. 1"=40' Dec. 1963

PREPARED IN THE OFFICES OF
DEVELOPMENT CONSULTANTS INC.
ENGINEERING DIVISION
1001 E. COLORADO BLVD. PASADENA, CALIFORNIA
By: J.S. Skand
REG. C. E. NO. 9553

FOR LEGEND SEE PLAN NO. S-6-64

NOTES:
1. PROVIDE STAKES ON THE PROPERTY LINE OR PROPERTY LINES PRODUCED AT RIGHT ANGLES TO THE SEWER LINE AT THE CENTER LINE OF EACH MANHOLE.
2. NO REPRESENTATIVE OF THE COUNTY ENGINEER WILL SURVEY OR LAY OUT ANY PORTION OF THE WORK.
3. THE PRIVATE ENGINEER SHALL FURNISH THE COUNTY ENGINEER WITH GRADE SHEETS AND STATIONING FOR ALL HOUSE LATERALS AND Y BRANCHES AND SHALL PROVIDE STAKES FOR THEM AT THEIR PROPER LOCATIONS WITH STATIONING PLAINLY MARKED. ALL HOUSE LATERALS SHALL BE CONSTRUCTED IN A STRAIGHT ALIGNMENT AT RIGHT ANGLES FROM THE MAIN LINE SEWER EXCEPT AS SHOWN ON THE PLANS. HOUSE LATERALS FROM CHIMNEYS SHALL NOT HAVE AN ANGLE OF LESS THAN 45° WITH THE MAIN LINE SEWER. ANY CHANGE IN ALIGNMENT SHALL BE REQUESTED IN WRITING BY THE PRIVATE ENGINEER.
4. THE PRIVATE ENGINEER SHALL FURNISH THE HOUSE LATERAL DEPTH AT THE PROPERTY LINE BELOW THE TOP OF CURB ELEVATION FOR EACH HOUSE LATERAL ON THE GRADE SHEET.
5. NO REVISIONS SHALL BE MADE IN THESE PLANS WITHOUT THE APPROVAL OF THE COUNTY ENGINEER.
6. THE CONTRACTOR SHALL NOTIFY THE CONSTRUCTION DIVISION BY TELEPHONE, MADISON 9-0747, EXT. 81551, AT LEAST TWENTY-FOUR HOURS BEFORE STARTING ANY WORK UNDER THIS CONTRACT.
7. MANHOLES SHALL BE BRICK SEWER STRUCTURES PER S-0-184. PRECAST CONCRETE MANHOLES PER S-0-173 OR S-0-173 MAY BE USED AS AN ALTERNATE IN LOCATIONS APPROVED BY THE COUNTY ENGINEER.
8. USE STANDARD MANHOLE FRAMES AND COVERS, S-0-117, EXCEPT AS NOTED.
9. MANHOLE TOPS IN UNIMPROVED RIGHTS-OF-WAY TO BE SIX INCHES ABOVE FINISHED GRADE.
10. USE EXTRA STRENGTH PIPE. ALL PIPE IS STANDARD DEPTH EXCEPT AS NOTED.
11. USE GROUND-MOUNTED OR MECHANICAL COMPRESSION JOINTS FOR ALL V.C.P. JOINTS PER SPECS. SECS. 36 & 41 & 47.
12. WHERE GROUND-WATER IS ENCOUNTERED DURING THE CONSTRUCTION OF THE SEWERS, THE CONTRACTOR SHALL BE RESPONSIBLE FOR PROTECTING THE SAME. COMMON LAW SPECS. SECS. 53 & 54, OR MECHANICAL COMPRESSION JOINTS PER S-0-173, SHALL BE USED.
13. IF A POWER POLE IS WITHIN THREE FEET OF THE SEWER, THE SEWER SHALL BE ENCASED, PER S-0-172, CASE III, TWO FEET ON EITHER SIDE FROM THE POINT OF INTERFERENCE.
14. IF DURING THE COURSE OF CONSTRUCTION IT IS DETERMINED THAT THERE IS LESS THAN FOUR FEET OF COVER OVER THE TOP OF A MAIN LINE OR HOUSE LATERAL V.C.P. SEWER WHICH IS NOT INDICATED ON THE PLANS, THE PIPE SHALL BE ENCASED PER S-0-172, CASE III, UNLESS OTHERWISE APPROVED BY THE COUNTY ENGINEER.
15. HOUSE LATERALS TO BE CONSTRUCTED WITH INVERTS AT PROPERTY LINE... FEET BELOW CURB GRADE EXCEPT AS NOTED.
16. RESURFACE ALL TRENCHES WITHIN PAVED AREAS TO MEET L.A. COUNTY ROAD DEPT. OR CALIFORNIA STATE HIGHWAY REQUIREMENTS IN ACCORDANCE WITH PERMITS.
17. FOR ALLOWABLE LEAKAGE TEST USE FORMULA NO. 2, SPECS. SEC. 64.
18. (a) CONSTRUCTION WILL NOT BE PERMITTED IN FILLED AREAS UNLESS ACCEPTABLE CERTIFICATION IS SUBMITTED TO THE CONSTRUCTION DIVISION OF THE COUNTY ENGINEERS DEPARTMENT THAT RELATIVE COMPACTION IS GREATER THAN 90%.
(b) IF COMPACTION IS LESS THAN 90%, THE SEWER SHALL BE CRADLED PER S-0-166 OR HAVE A SPECIAL BASE COURSE PER S-0-173, CASE III. SPECIAL MANHOLE BASES MUST BE INSTALLED PER S-0-183 AS INDICATED ON PLAN.
(c) IF COMPACTION IS GREATER THAN 90%, CRADLING AND SPECIAL MANHOLE BASES ARE NOT REQUIRED.
19. ALL STATE AND LOCAL TRENCH SAFETY ORDERS WILL BE RIGIDLY ENFORCED.

B.M. SY 5588 ELEV. 770.859
Set L&BN in conc. base of light stand (flood lights) in park lot of Billingsley's Steak Ranch 2 W of 320' S of int. Ventura Blvd & Las Virgenes Road. MALIBU QUAD. 19.60



KEY MAP
TRACT No 28121
P.C. 6809
SCALE: 1"=200'

NOTE: Numbers in circles denotes page number

ISSUE NO PERMITS
UNTIL OUTLET IS
CONSTRUCTED

COLLECT CHARGES
AS INDICATED
L. Curtis 3-9-64

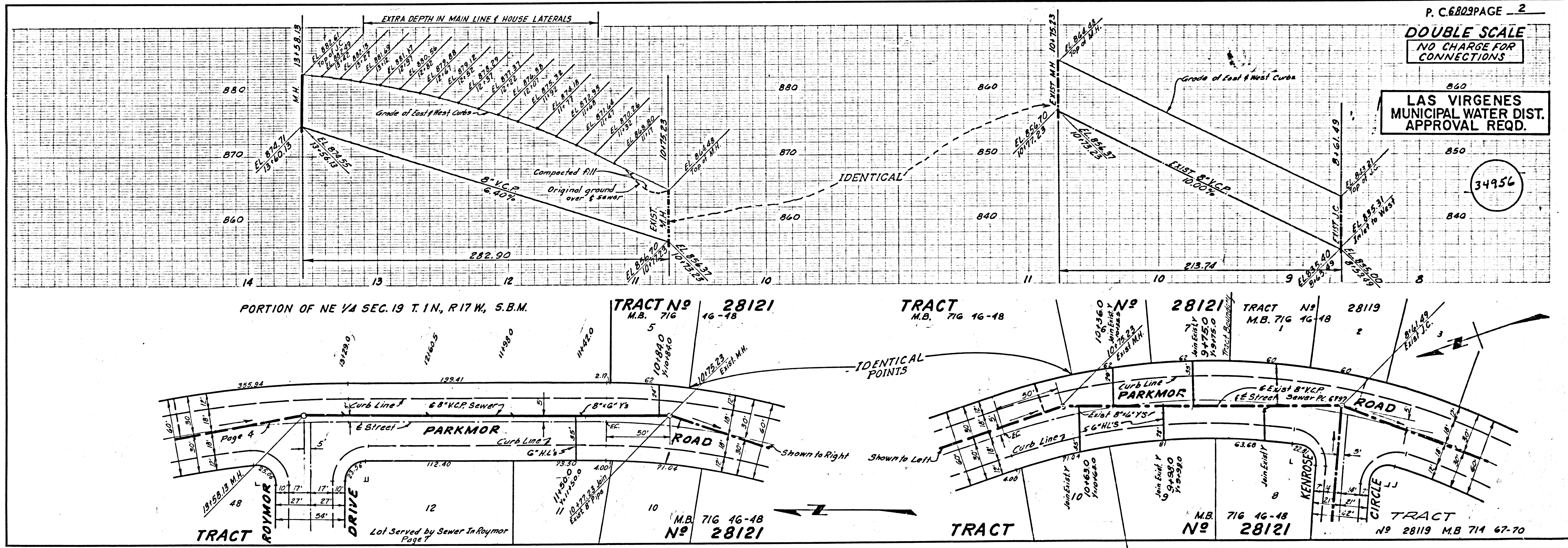
COUNTY OF LOS ANGELES, CALIFORNIA
JOHN A. LAMBIE, COUNTY ENGINEER
APPROVED BY: [Signature] ASSISTANT SANITATION ENGINEER
SUBMITTED BY: [Signature] REGIONAL ENGINEER
CHECKED BY: [Signature] REG. C. E. NO. 13924
LAS VIRGENES MUNICIPAL WATER DIST. APPROVAL REQ.
APPROVED BY: [Signature] OFFICE ENGINEER

J.N. 0362.06

P.C. 6809 PAGE 2

DOUBLE SCALE
NO CHARGE FOR CONNECTIONS

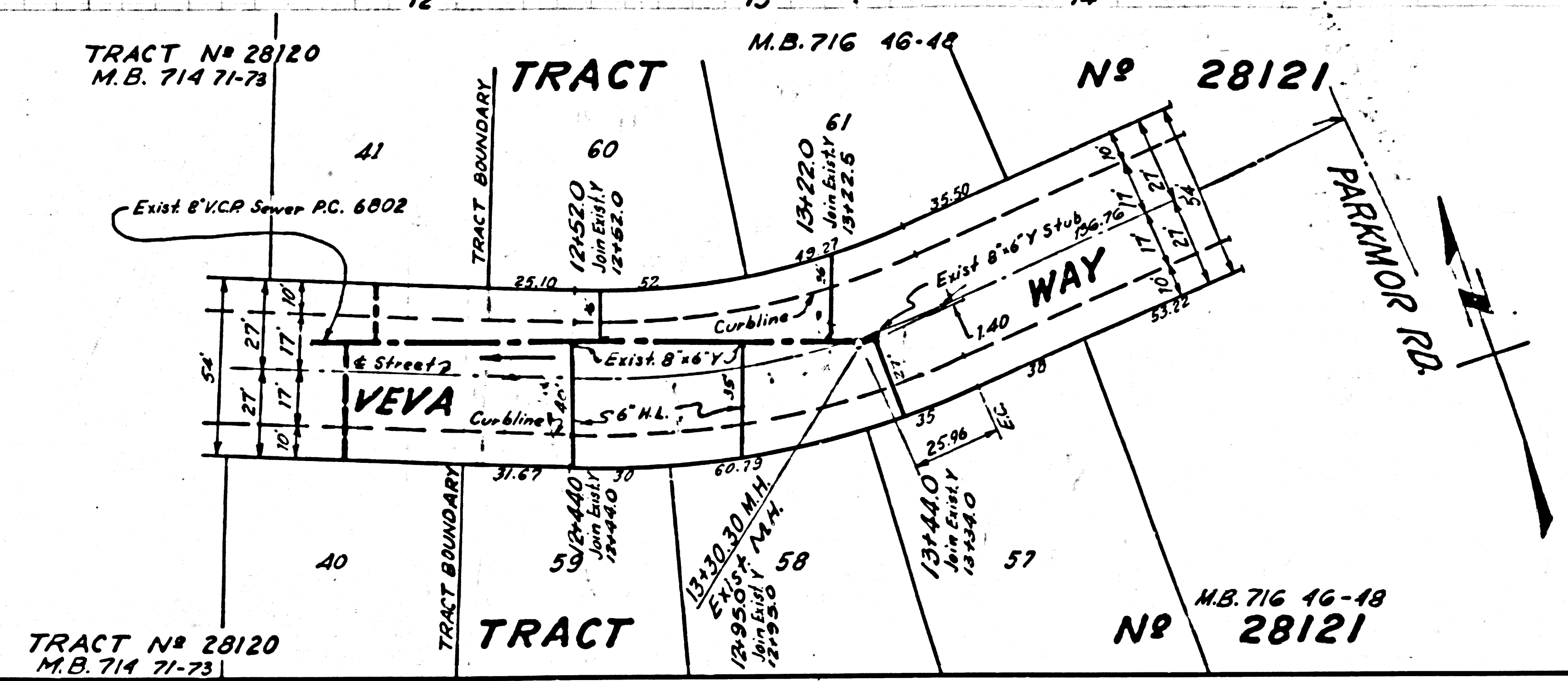
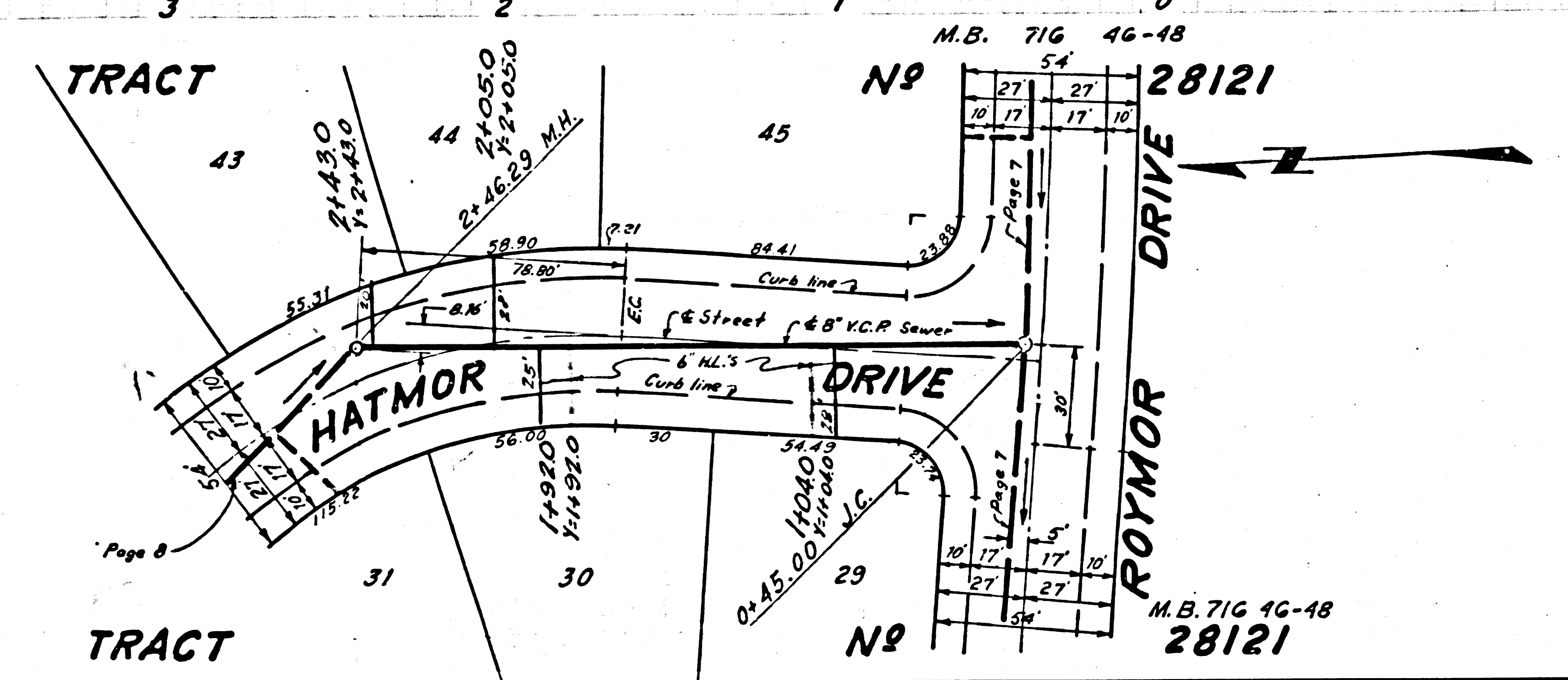
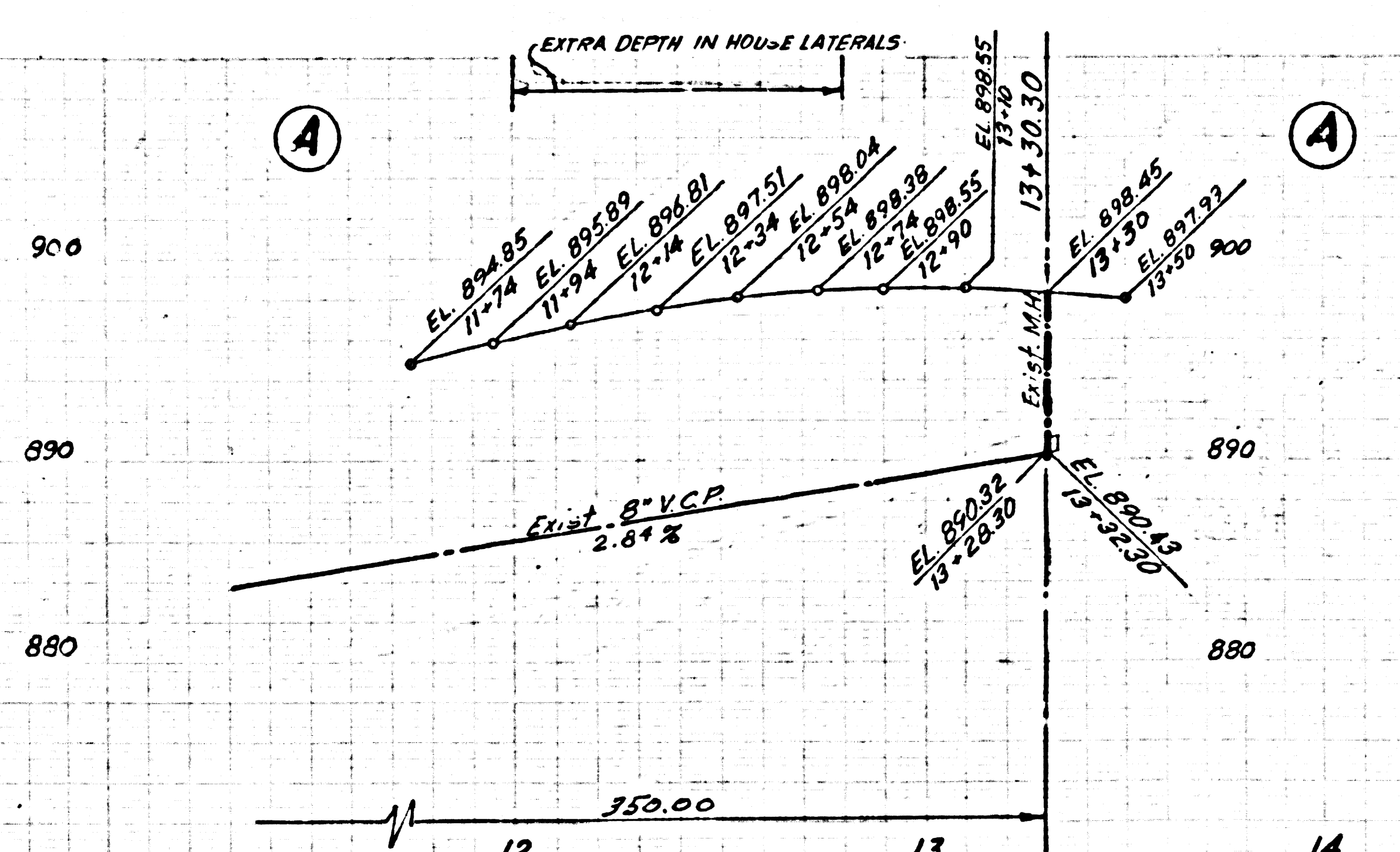
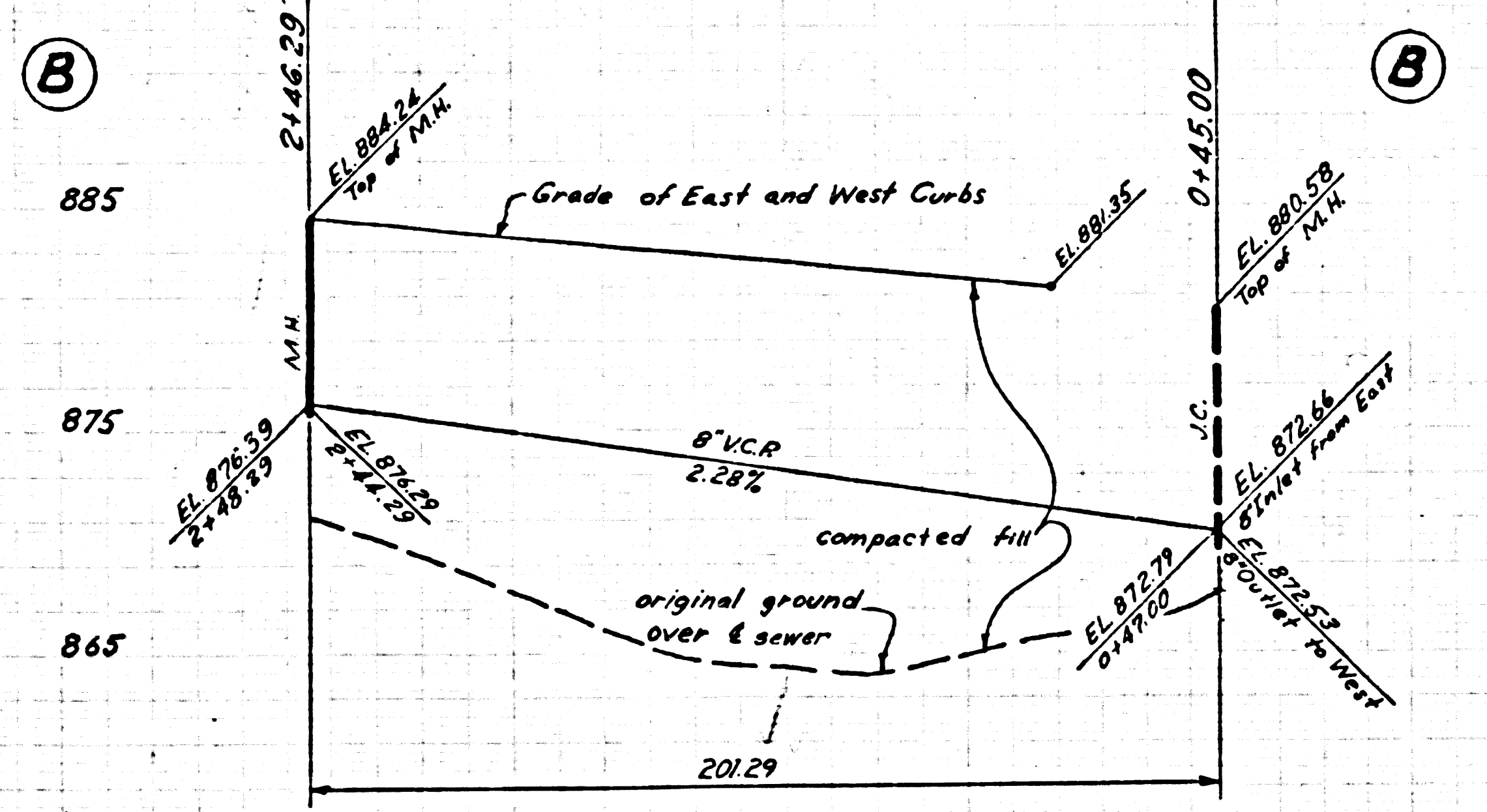
LAS VIRGENES MUNICIPAL WATER DIST. APPROVAL REQ.



DOUBLE SCALE
NO CHARGE FOR CONNECTIONS

LAS VIRGENES
MUNICIPAL WATER DIST.
APPROVAL REQD.

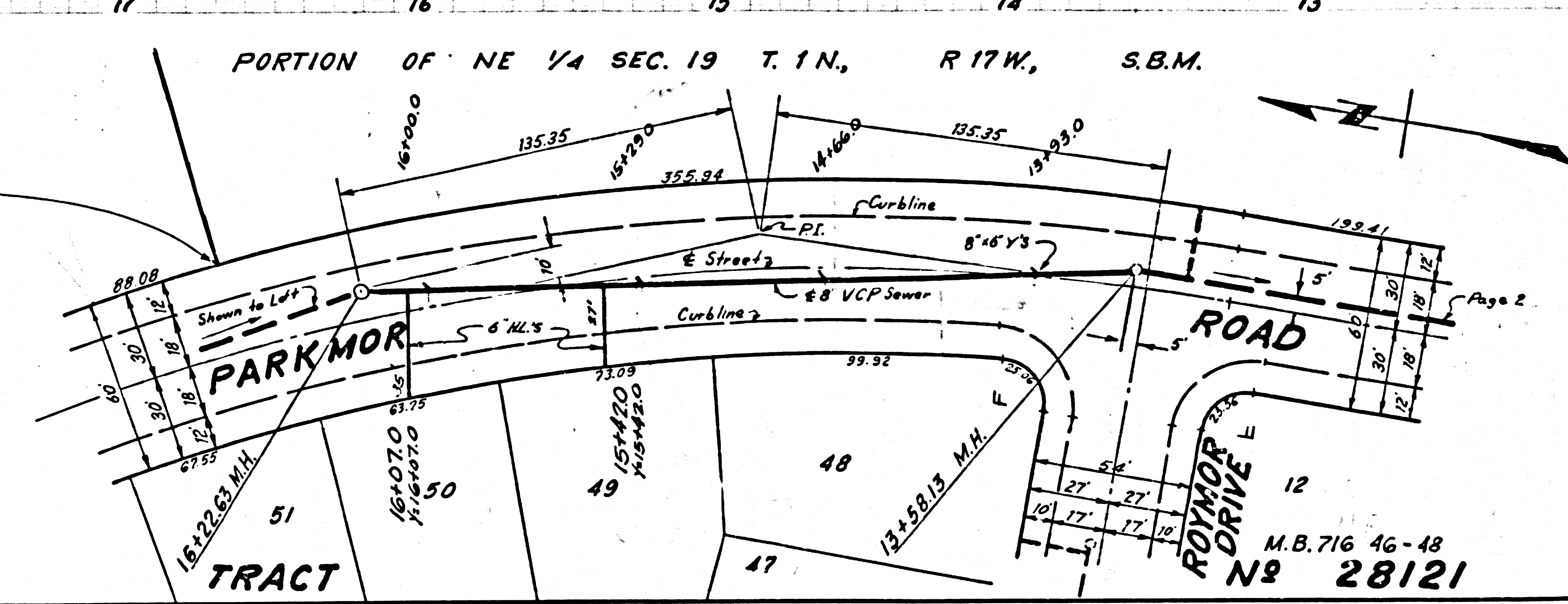
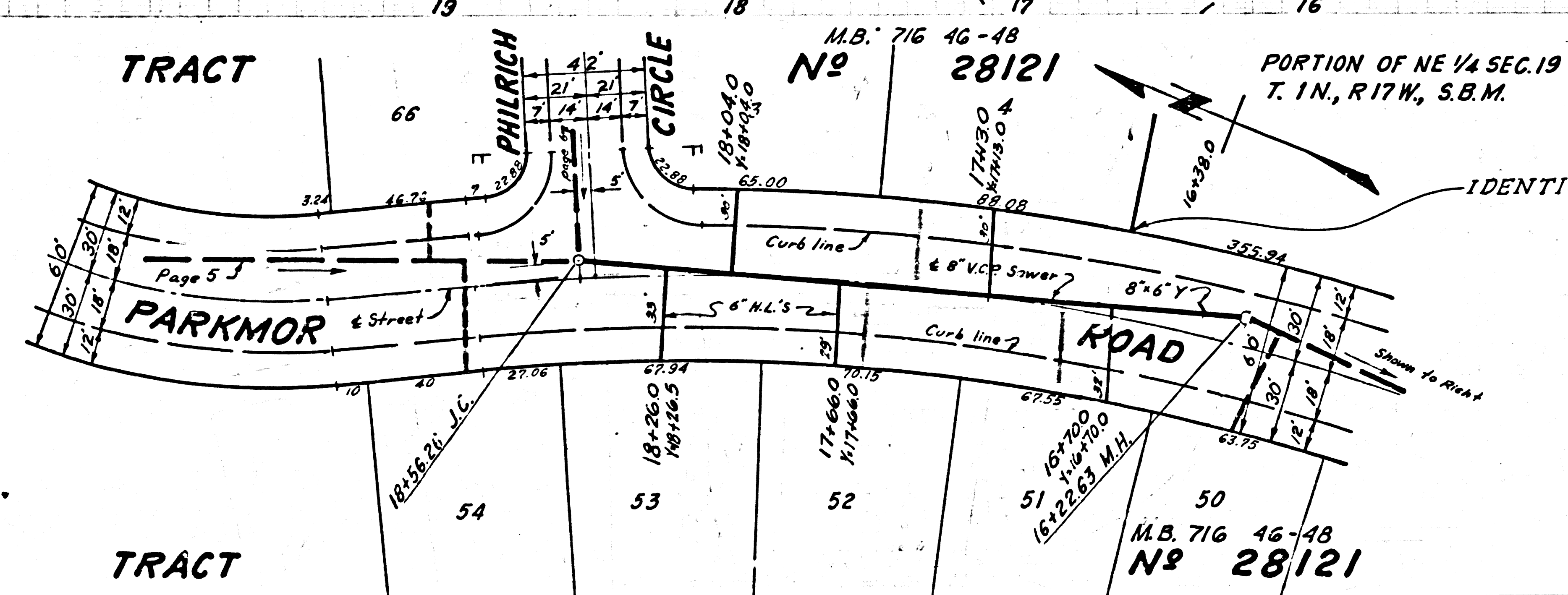
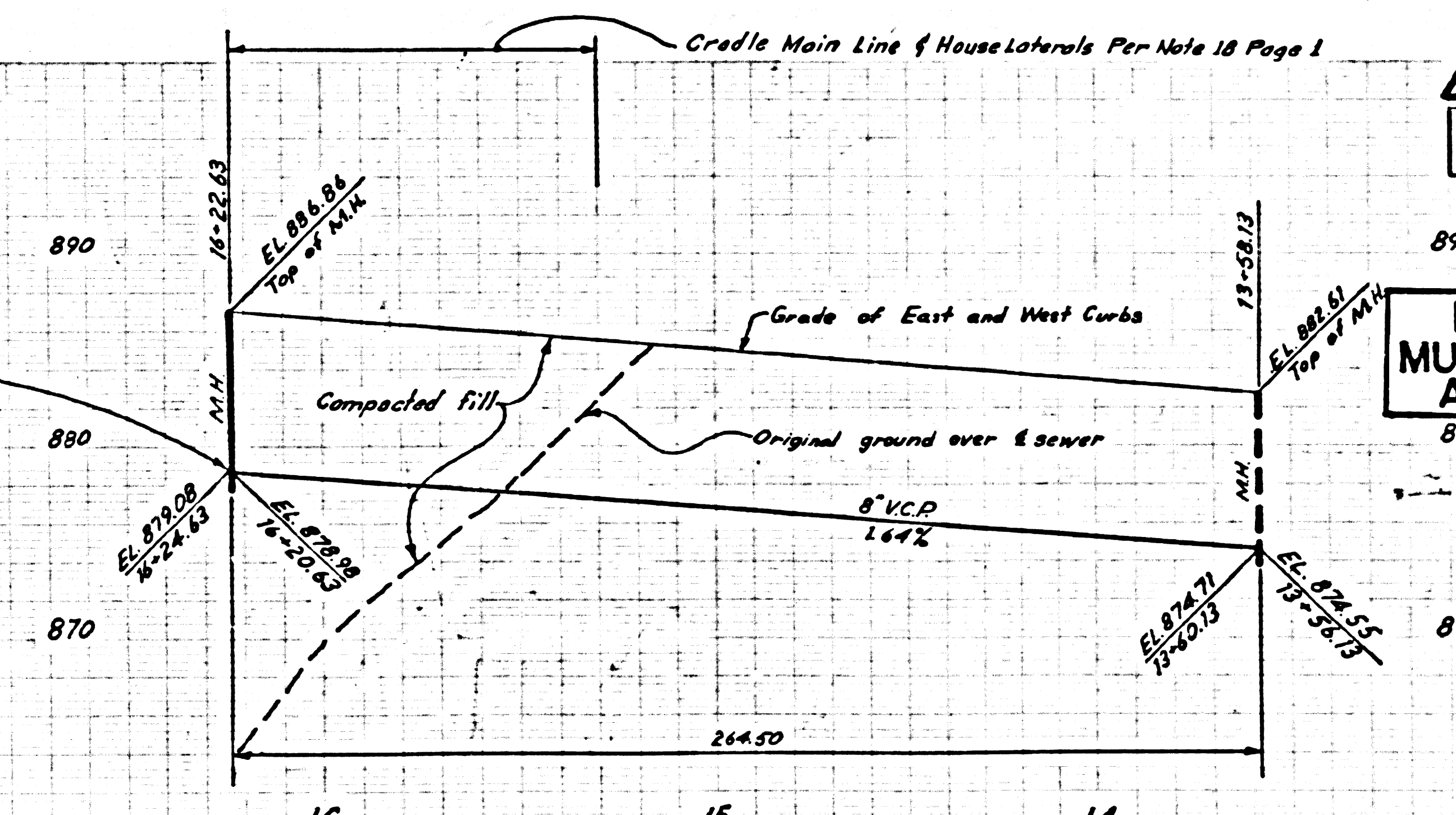
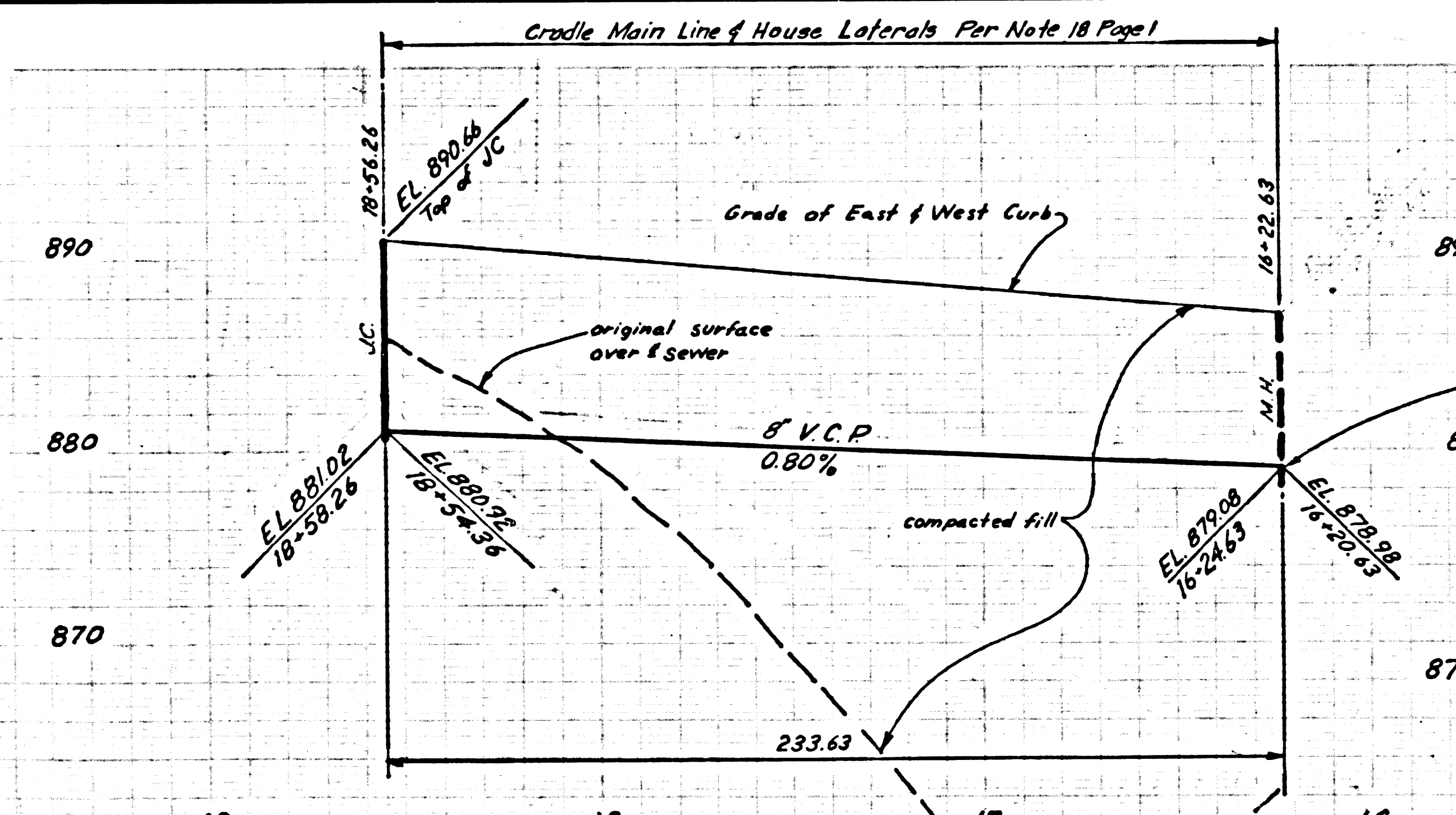
34957



DOUBLE SCALE
NO CHARGE FOR CONNECTIONS

LAS VIRGENES
MUNICIPAL WATER DIST.
APPROVAL REQD.

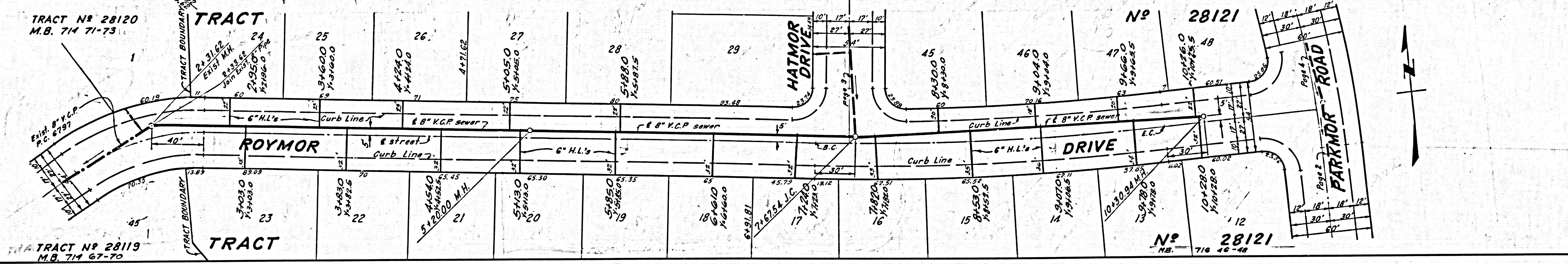
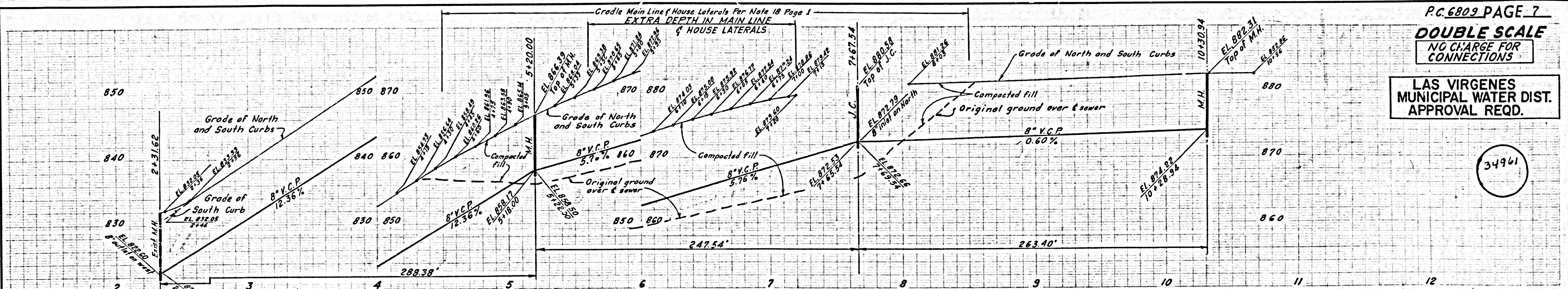
34958



DOUBLE SCALE
NO CHARGE FOR CONNECTIONS

LAS VIRGENES
MUNICIPAL WATER DIST.
APPROVAL REQD.

34961



DOUBLE SCALE
NO CHARGE FOR CONNECTIONS

LAS VIRGENES
MUNICIPAL WATER DIST.
APPROVAL REQD.

34962

