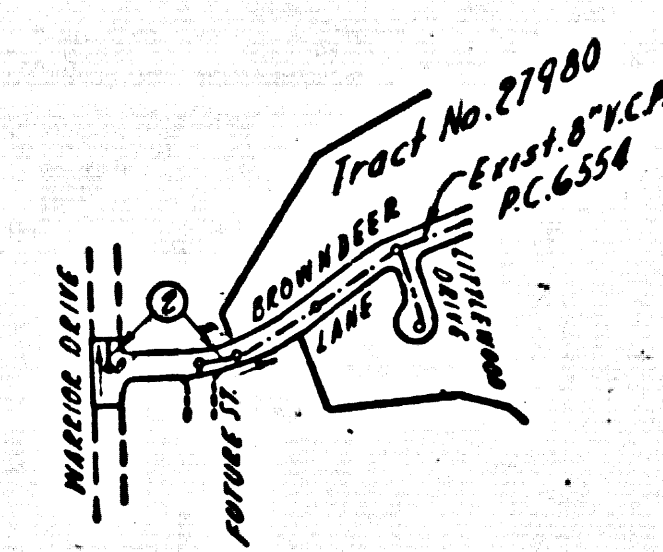


B.M. 57-4858 ELEV. 420.107
 2.0 B.R. Cap. Man. in well with cover at 4' intersection Palos Verdes Drive North & Crenshaw Boulevard.
 Palos Verdes QUAD. 19 60



INDEX MAP
 BROWDEER LANE SEWER EXTENSION
 P.C. 6811
 Scale: 1"=60'

NO CONNECTIONS FOR THE DISPOSAL OF INDUSTRIAL WASTES SHALL BE MADE TO SEWERS SHOWN ON THESE DRAWINGS WITHOUT WRITTEN PERMISSION FROM THE CHIEF ENGINEER AND GENERAL MANAGER OF THE COUNTY SANITATION DISTRICTS.

BEFORE BREAKING INTO ANY EXISTING STRUCTURE AND BEFORE FINAL ACCEPTANCE OF THIS WORK, COUNTY SANITATION DISTRICT (DU 4-1281) SHALL BE NOTIFIED IN ORDER THAT REQUIRED INSPECTION CAN BE MADE.

ISSUE NO PERMIT UNTIL OUTLET SEWERAGE IS CONSTRUCTED & ACCEPTED

DOUBLE SCALE
 LOMITA BLDG. DIST. NO. 12

PROFILE ALIGNMENT AND GRADE OF
 SANITARY SEWERS PAGE 1

TO BE CONSTRUCTED IN

BROWDEER LANE SEWER EXT.

PRIVATE CONTRACT NO. 6811

W.S. 27

1 SHEET, 2 PAGES

36406

SCALE: VERT. 1"=4' HORIZ. 1"=40'

NOV. 1963

PREPARED IN THE OFFICES OF
 ENGINEERING SERVICE CORPORATION

By: *J.R. Deville*
 REG. C. E. NO. 13095

FOR LEGEND SEE PLAN NO. S-a-64

NOTE: GRADES TO WHICH THIS IMPROVEMENT IS TO BE CONSTRUCTED ARE SHOWN ON PLANS AND PROFILES. GRADE POINTS FOR TOP OF CURBS, CENTER LINE OF STREETS, OR CENTER LINE OF ALLEYS ARE SHOWN BY CIRCLES ON PROFILES. AT ALL POINTS BETWEEN DESIGNATED POINTS THE GRADE SHALL BE ESTABLISHED SO AS TO CONFORM TO A STRAIGHT LINE DRAWN BETWEEN SAID DESIGNATED POINTS. ELEVATIONS ARE IN FEET ABOVE U.S.C. & G.S. SEA LEVEL DATUM OF 1929. THIS DRAWING AND THE DATA HEREON ARE HEREBY MADE A PART OF THE SPECIFICATIONS. BEFORE WORK CAN BE STARTED, THE CONTRACTOR MUST OBTAIN A PERMIT TO EXCAVATE IN COUNTY STREETS FROM THE L.A. COUNTY ROAD DIST. DISTRICT OFFICE NO. 3 AND PAY A FEE TO THE COUNTY ENGINEER, ROOM 330, COUNTY ENGINEERING BUILDING, 100 WEST SECOND STREET OR PALOS VERDES, CALIFORNIA, PROJECT... REGIONAL OFFICE, SUFFICIENT TO COVER THE COST OF CONSTRUCTION INSPECTION AND RECORD PLANS. APPROVAL OF THIS PLAN BY THE COUNTY OF LOS ANGELES DOES NOT CONSTITUTE A REPRESENTATION AS TO THE ACCURACY OF THE LOCATION OF OR THE EXISTENCE OR NON-EXISTENCE OF ANY UNDERGROUND UTILITY PIPE, OR STRUCTURE WITHIN THE LIMITS OF THE PROJECT. THIS NOTE APPLIES TO ALL PAGES. IF WORK IS TO BE DONE IN A STATE HIGHWAY, A PERMIT MUST BE OBTAINED FROM THE STATE OF CALIFORNIA, DIVISION OF HIGHWAY, 120 SOUTH SPRING STREET, LOS ANGELES, CALIFORNIA.

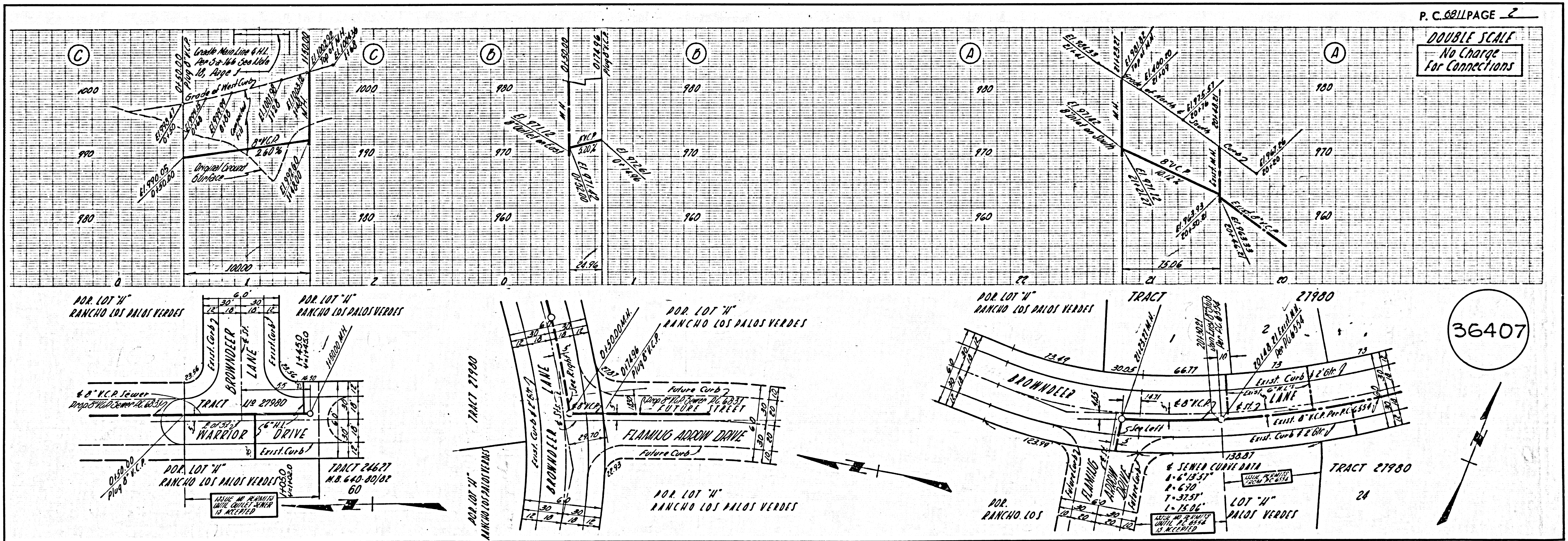
COUNTY OF LOS ANGELES, CALIFORNIA
 JOHN A. LAMBIE, COUNTY ENGINEER J. D. PARKHURST, CHIEF ENGINEER

APPROVED BY: *Robert E. Kuhn* ASSISTANT SANITATION ENGINEER APPROVED BY: *J.P. McQuinn* OFFICE ENGINEER

SUBMITTED BY: *Jack C. Farnsworth* PALOS VERDES DISTRICT LA VALLEY REGIONAL ENGINEER

CHECKED BY: *John DeWitt* REG. C. E. NO. 36406

J.N. 0362.08



P.C. 6811 PAGE 2
 DOUBLE SCALE
 No Charge
 For Connections

36407