

TO BE CONSTRUCTED IN

DON JULIAN ROAD PRIVATE CONTRACT NO. 6817

W.S. 37 SHEETS: 2 PAGES SCALE: VERT. 1"=4' HORIZ. 1"=40' 23 DECEMBER, 1963

TECHNOLOGICAL ENGINEERING CORP.

FOR LEGEND SEE PLAN NO. S-64

NOTE: GRADES TO WHICH THIS IMPROVEMENT IS TO BE CONSTRUCTED ARE SHOWN ON PLANS AND PROFILES. GRADE POINTS FOR TOP OF CURBS, CENTER LINE OF STREETS, OR CENTER LINE OF ALLEYS ARE SHOWN BY CIRCLES ON PROFILES. AT ALL POINTS BETWEEN DESIGNATED POINTS THE GRADE SHALL BE ESTABLISHED SO AS TO CONFORM TO A STRAIGHT LINE DRAWN BETWEEN SAID DESIGNATED POINTS.

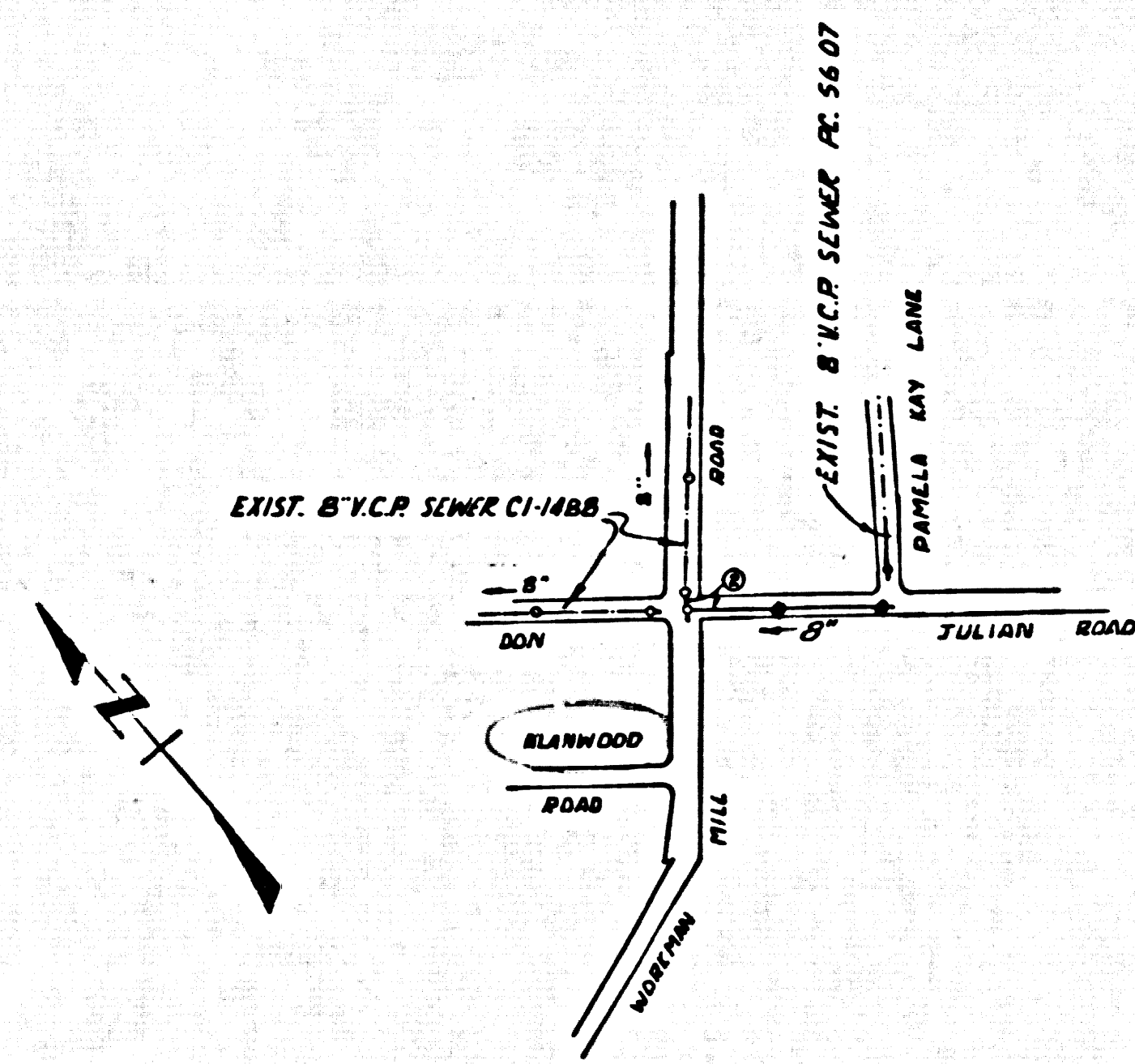
COUNTY OF LOS ANGELES, CALIFORNIA JOHN A. LAMBIE, COUNTY ENGINEER J. D. PARKHURST, CHIEF ENGINEER APPROVED BY: [Signatures] ASSISTANT SANITATION ENGINEER OFFICE ENGINEER

- NOTE: 1. PROVIDE STAKES ON THE PROPERTY LINE OR PROPERTY LINES PRODUCED AT RIGHT ANGLES TO THE SEWER LINE AT THE CENTER LINE OF EACH MANHOLE. 2. NO REPRESENTATIVE OF THE COUNTY ENGINEER WILL SURVEY OR LAY OUT ANY PORTION OF THE WORK. 3. THE PRIVATE ENGINEER SHALL FURNISH THE COUNTY ENGINEER WITH GRADE SHEETS AND STATIONING FOR ALL HOUSE LATERALS AND Y BRANCHES AND SHALL PROVIDE STAKES FOR THEM AT THEIR PROPER LOCATIONS WITH STATIONING PLAINLY MARKED.

INDUSTRIAL WASTE APPROVED Joseph B. Francis 12/24/63

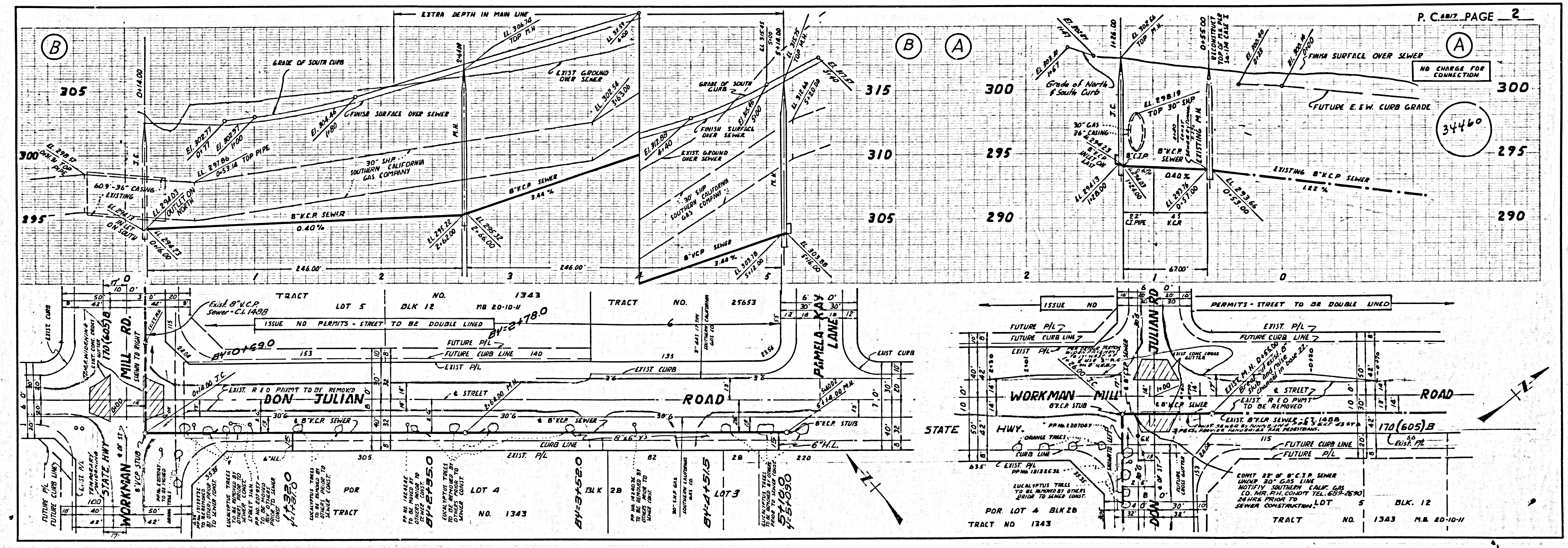
COLLECT CHARGES AS INDICATED PR Smith 1-7-64

B.M. 56 2305 ELEV. 301.921 ROUND HEAD SPIKE NEAR NORTH EDGE OF CONCRETE DRIVE TO HOUSE #19344 DON JULIAN ROAD 35' S SOUTH OF S DON JULIAN ROAD AND 200' WEST OF E 2ND AVE. (WORKMAN MILL RD) MARKED "A-1" BASE LINE QUAD. 19 55



INDEX MAP SCALE: 1" = 600' PC NO. 6817

Table with columns: DATE, REVISION, BY, APPROVED BY. Includes entries for 'ADDED PAVEMENT WITHIN AN WORKMAN MILL RD. ADDED REQUIREMENT FOR TUNNELING STA 0+30 TO 2+00 ON WORKMAN MILL RD. WEST SIDE' and 'REVISION' by 'Jordan W. Keigel'.



34460

TRACT NO. 1343 P.B. 20-10-11