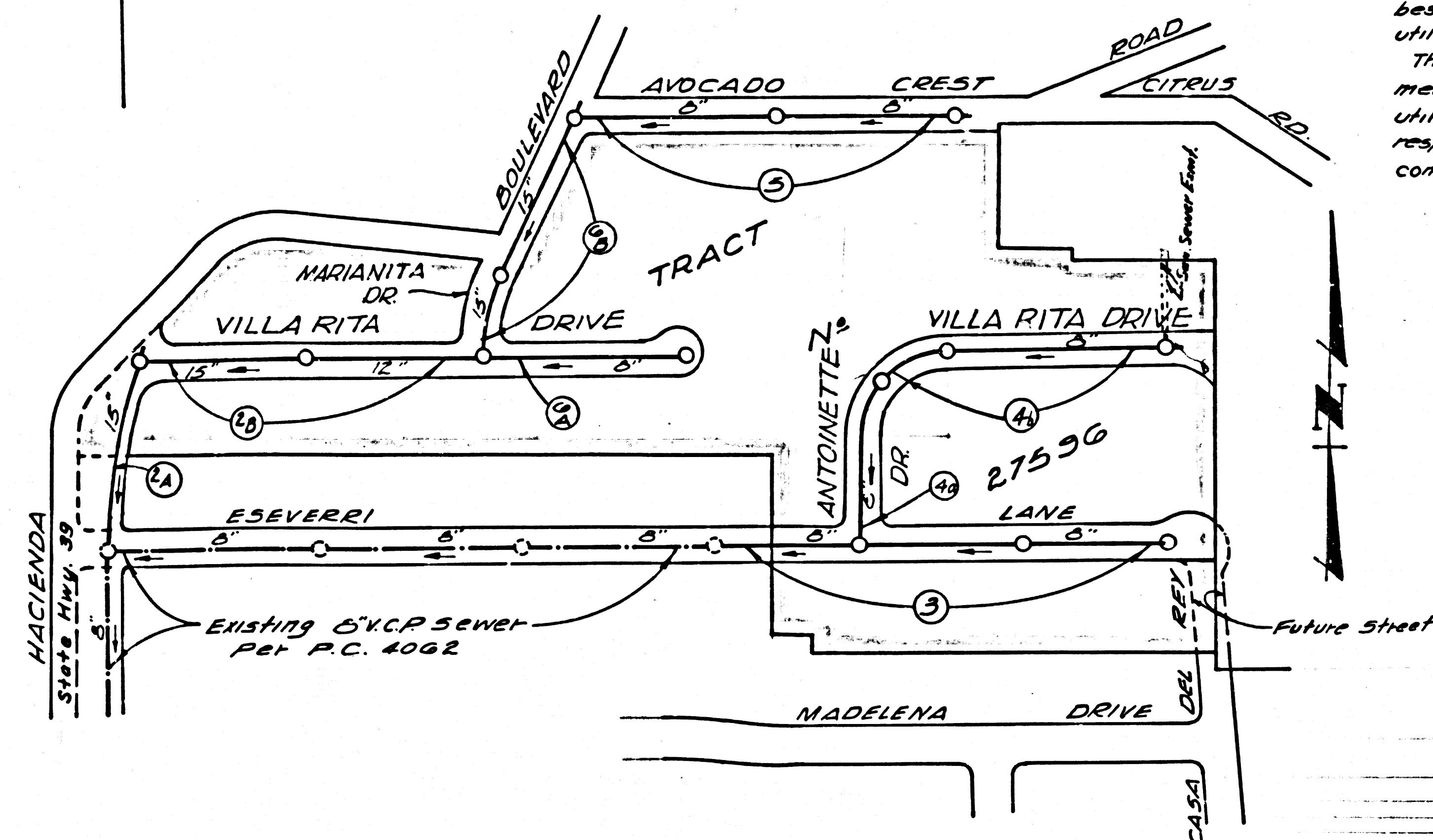


B.M. C.S. 38-2 ELEV. 424.972
 Hacienda Blvd L.A. - Orange County line
 6' inner 3'rd precast Mon. 3' set on
 the surface and protected by cast
 iron cover lettered "County Surveyor
 Monument" 1957 Adj. Elev. 424.972 L.A. Co. Eng.
 F.B. 1359-8



INDEX MAP
 TRACT NO. 27596
 P.C. 6833
 SCALE: 1" = 200'

NOTE:
 The existence and approximate location of underground utilities or structures shown on these plans were determined by a search of the available public records. To the best of our knowledge there are no existing underground utilities or structures except as shown on these plans. The contractor is required to take due precautionary measures to protect the utilities or structures shown on any utilities or structures at the site. It shall be the contractor's responsibility to notify the owners of the utilities or structures concerned before starting work.

REVISION

MOVED 15" SEWER FROM 5' E. OF C. TO 14' E. OF C. ON HACIENDA BLVD. PAGE 6-B ALSO PAGES 2-B, 3, 4, 6-A.
 APPROVED BY: [Signature]
 STATE OF CALIFORNIA

DOUBLE VERTICAL SCALE
 WHITTIER BLDG. DIST. NO. 11

PROFILE ALIGNMENT AND GRADE OF
SANITARY SEWERS PAGE 1
 TO BE CONSTRUCTED IN

TRACT NO. 27596
 PRIVATE CONTRACT NO. 6833

W.S. 30
 9 SHEETS, 9 PAGES
 SCALE: VERT. 1" = 8'
 HORIZ. 1" = 40'
 OCTOBER, 1963
 PREPARED IN THE OFFICES OF
HEMMERER ENG'G. CO. INC.
 145 N. PAINTER AVE. WHITTIER, CAL.
 BY: Robert R. Flores
 REG. C. E. NO. 11349

34753

FOR LEGEND SEE PLAN NO. S-6-64

- PROVIDE STAKES ON THE PROPERTY LINE OR PROPERTY LINES PRODUCED AT RIGHT ANGLES TO THE SEWER LINE AT THE CENTER LINE OF EACH MANHOLE.
- NO REPRESENTATIVE OF THE COUNTY ENGINEER WILL SURVEY OR LAY OUT ANY PORTION OF THE WORK.
- THE PRIVATE ENGINEER SHALL FURNISH THE COUNTY ENGINEER WITH GRADE SHEETS AND STATIONING FOR ALL HOUSE LATERALS AND Y BRANCHES AND SHALL PROVIDE STAKES FOR THEM AT THEIR PROPER LOCATIONS WITH STATIONING PLAINLY MARKED. ALL HOUSE LATERALS SHALL BE CONSTRUCTED IN A STRAIGHT ALIGNMENT AT RIGHT ANGLES FROM THE MAIN LINE SEWER EXCEPT AS SHOWN ON THE PLANS. HOUSE LATERALS FROM CHIMNEYS SHALL NOT HAVE AN ANGLE OF LESS THAN 45° WITH THE MAIN LINE SEWER. ANY CHANGE IN ALIGNMENT SHALL BE REQUESTED IN WRITING BY THE PRIVATE ENGINEER.
- THE PRIVATE ENGINEER SHALL FURNISH THE HOUSE LATERAL DEPTH AT THE PROPERTY LINE BELOW THE TOP OF CURB ELEVATION FOR EACH HOUSE LATERAL ON THE GRADE SHEET.
- NO REVISIONS SHALL BE MADE IN THESE PLANS WITHOUT THE APPROVAL OF THE COUNTY ENGINEER.
- THE CONTRACTOR SHALL NOTIFY THE CONSTRUCTION DIVISION BY TELEPHONE, MADISON 9-4747, EXT. 8151, AT LEAST TWENTY-FOUR HOURS BEFORE STARTING ANY WORK UNDER THIS CONTRACT.
- MANHOLES SHALL BE BRICK SEWER STRUCTURES PER S-6-104. PRECAST CONCRETE MANHOLES PER S-6-115 OR S-6-173 MAY BE USED AS AN ALTERNATE IN LOCATIONS APPROVED BY THE COUNTY ENGINEER.
- USE STANDARD MANHOLE FRAMES AND COVERS, S-6-117, EXCEPT AS NOTED.
- MANHOLE BOARDS IN UNIMPROVED AREAS OR WAYS 50'-80' INCHES ABOVE FINISHED GRADE:
- USE EXTRA STRENGTH PIPE. ALL PIPE IS STANDARD DEPTH EXCEPT AS NOTED.
- USE 6MM-BRASS OR BRASS MECHANICAL COMPRESSION JOINTS FOR ALL V.C.P. JOINTS PER SPECS. SECS. 34, 48, 49
- WHERE FIBER GROUND WATER IS DISCOVERED DURING THE CONSTRUCTION OF THE SEWERS, THE V.C.P. JOINTS SHALL BE OF JOINT COMPOUND PER SPECS. SECS. 33-3-46, OR MECHANICAL COMPRESSION JOINTS PER SPECS. SECS. 34, 48, 49
- IF A POWER POLE IS WITHIN THREE FEET OF THE SEWER, THE SEWER SHALL BE ENCASED, PER S-6-172, CASE III, TWO FEET ON EACH SIDE FROM THE POINT OF INTERFERENCE.
- IF DURING THE COURSE OF CONSTRUCTION IT IS DETERMINED THAT THERE IS LESS THAN FOUR FEET OF COVER OVER THE TOP OF A MAIN LINE OR HOUSE LATERAL V.C.P. SEWER WHICH IS NOT INDICATED ON THE PLANS, THE PIPE SHALL BE ENCASED PER S-6-172, CASE III, UNLESS OTHERWISE APPROVED BY THE COUNTY ENGINEER.
- HOUSE LATERALS TO BE CONSTRUCTED WITH INVERTS AT PROPERTY LINE... FEET BELOW CURB GRADE...
- RESURFACE ALL TRENCHES WITHIN PAVED AREAS TO MEET L.A. COUNTY ROAD DEPT. ON CALIFORNIA STATE HIGHWAY REQUIREMENTS IN ACCORDANCE WITH PERMITS.
- FOR ALLOWABLE LEAKAGE TEST USE FORMULA NO. 2, SPECS. SEC. 44
- ALL STATE AND LOCAL TRENCH SAFETY ORDERS WILL BE RIGIDLY ENFORCED.

NO CONNECTIONS FOR THE DISPOSAL OF INDUSTRIAL WASTES SHALL BE MADE TO SEWERS SHOWN ON THESE DRAWINGS WITHOUT WRITTEN PERMISSION FROM THE CHIEF ENGINEER AND GENERAL MANAGER OF THE COUNTY SANITATION DISTRICTS.

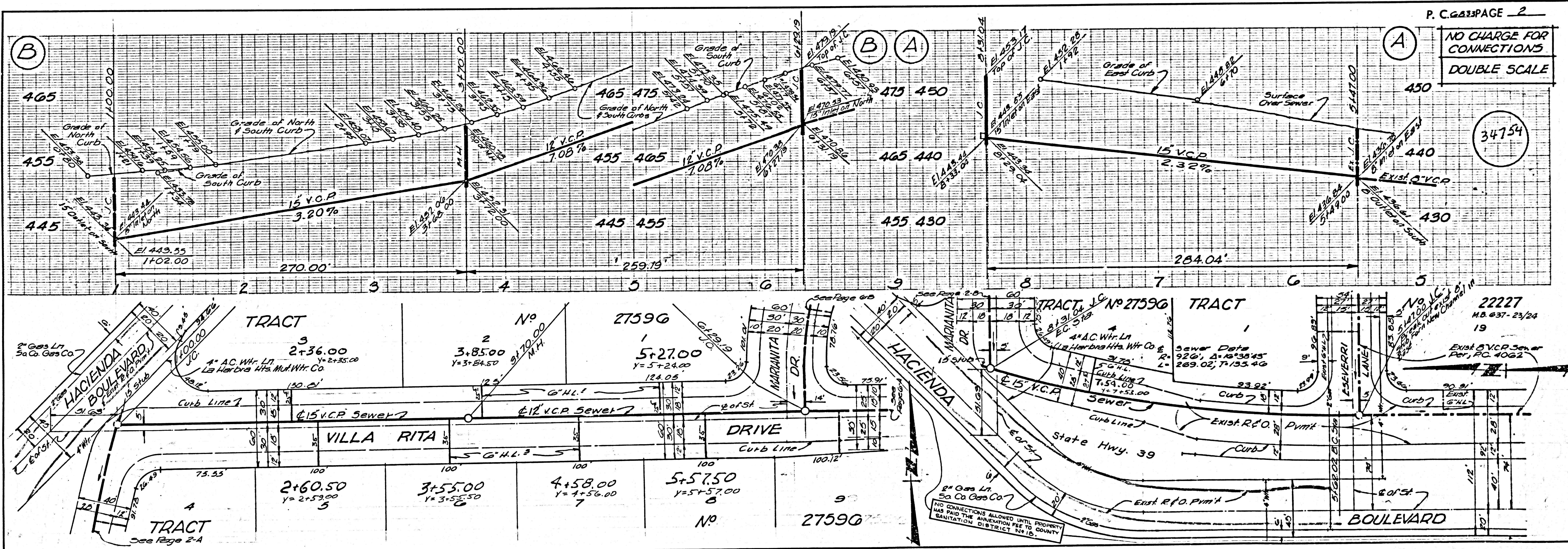
COLLECT CHARGES AS INDICATED

[Signature]

NOTE:
 GRADES TO WHICH THIS IMPROVEMENT IS TO BE CONSTRUCTED ARE SHOWN ON PLANS AND PROFILES. GRADE POINTS FOR TOP OF CURB, CENTER LINE OF STREETS, OR CENTER LINE OF ALLEYS ARE SHOWN BY CIRCLES ON PROFILES. AT ALL POINTS BETWEEN DESIGNATED POINTS THE GRADE SHALL BE ESTABLISHED SO AS TO CONFORM TO A STRAIGHT LINE DRAWN BETWEEN SAID DESIGNATED POINTS. ELEVATIONS ARE IN FEET ABOVE U.S.C. & G.S. SEA LEVEL DATUM OF 1929. THIS DRAWING AND THE DATA HEREON ARE HEREBY MADE A PART OF THE SPECIFICATIONS. BEFORE WORK CAN BE STARTED, THE CONTRACTOR MUST OBTAIN A PERMIT TO EXCAVATE IN COUNTY STREETS FROM THE L.A. COUNTY ROAD DEPT. DISTRICT OFFICE NO. 4, AND PAY A FEE TO THE COUNTY ENGINEER, ROOM 300, COUNTY ENGINEERING BUILDING, 100 WEST SECOND STREET OR LOS ANGELES REGIONAL OFFICE, SUFFICIENT TO COVER THE COST OF CONSTRUCTION INSPECTION AND RECORD PLANS. APPROVAL OF THIS PLAN BY THE COUNTY OF LOS ANGELES DOES NOT CONSTITUTE A REPRESENTATION AS TO THE ACCURACY OF THE LOCATION OF OR THE EXISTENCE OR NON-EXISTENCE OF ANY UNDERGROUND UTILITY PIPE, OR STRUCTURE WITHIN THE LIMITS OF THIS PROJECT. THIS NOTE APPLIES TO ALL PAGES. IF WORK IS TO BE DONE IN A STATE HIGHWAY, A PERMIT MUST BE OBTAINED FROM THE STATE OF CALIFORNIA, DIVISION OF HIGHWAYS, 120 SOUTH SPRING STREET, LOS ANGELES, CALIFORNIA.

COUNTY OF LOS ANGELES, CALIFORNIA
 JOHN A. LAMBIE, COUNTY ENGINEER
 J. D. PARKHURST, CHIEF ENGINEER
 CO. SAN. DIST. NO. 11
 APPROVED BY: [Signature] ASSISTANT SANITATION ENGINEER
 APPROVED BY: [Signature] OFFICE ENGINEER
 SUBMITTED BY: [Signature] 3-16-64
 425 CANTON ST. REGIONAL ENGINEER REG. C. E. NO. 3671
 CHECKED BY: [Signature]
 REG. C. E. NO. 11278

J.N. 0302.22

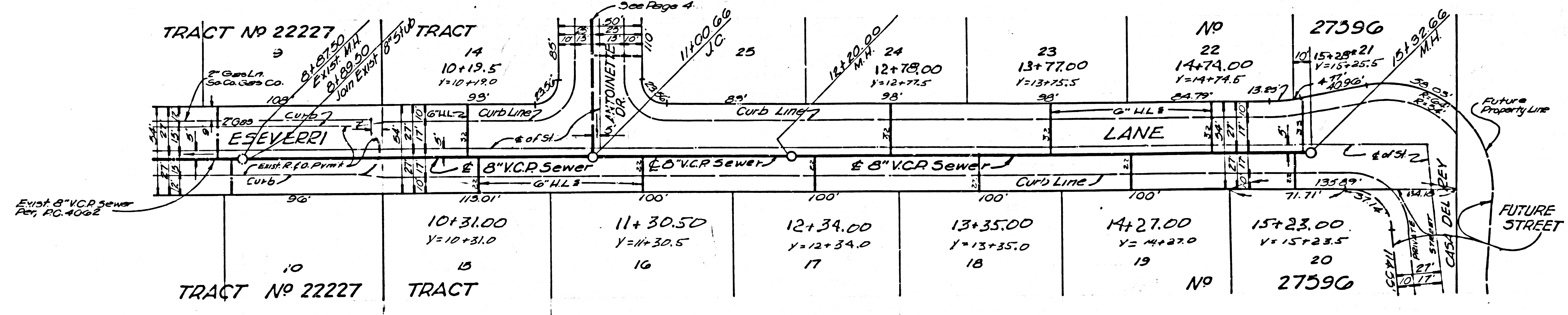
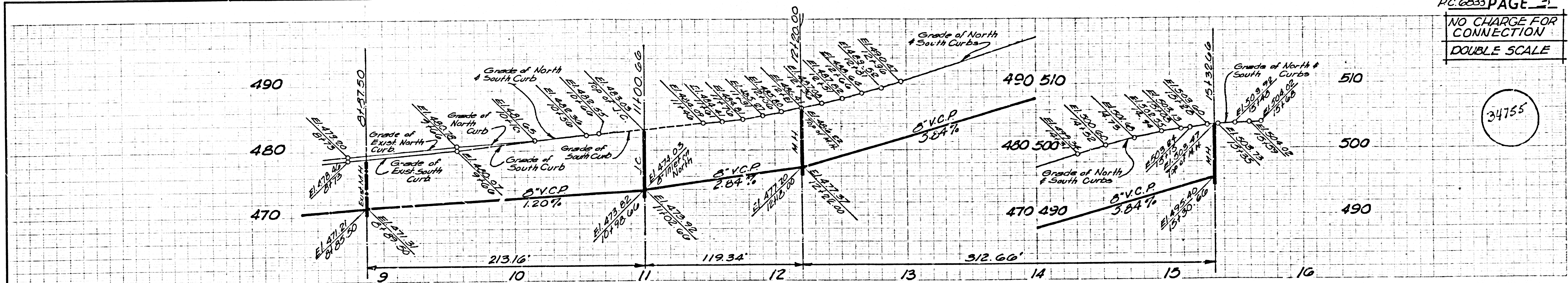


P.C. 6833 PAGE 2
NO CHARGE FOR CONNECTIONS
DOUBLE SCALE

34754

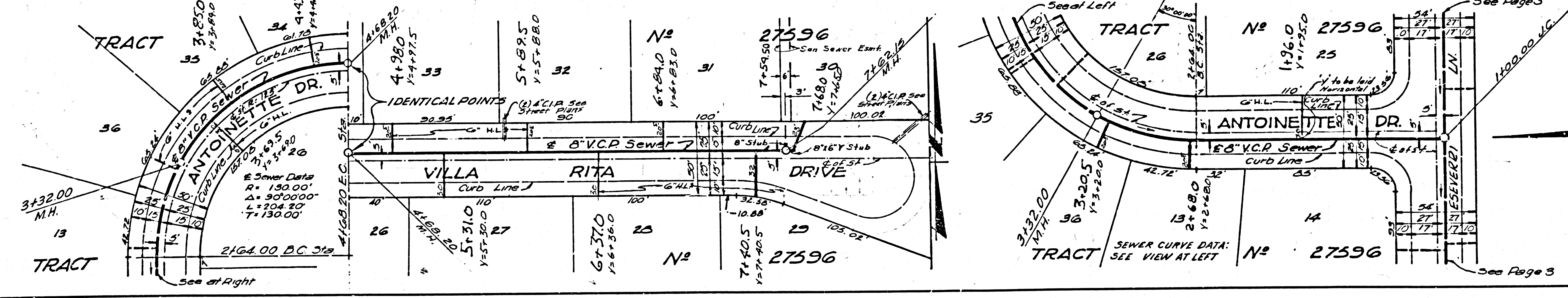
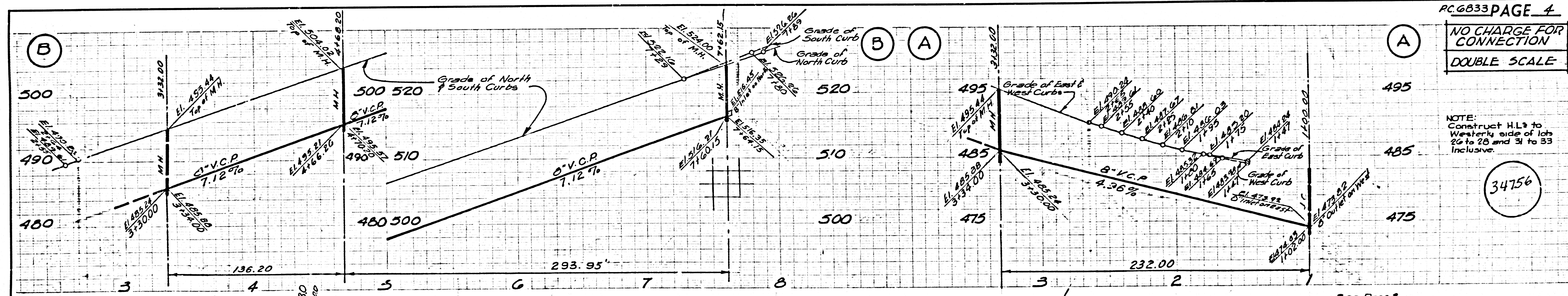
NO CHARGE FOR CONNECTION
DOUBLE SCALE

34755

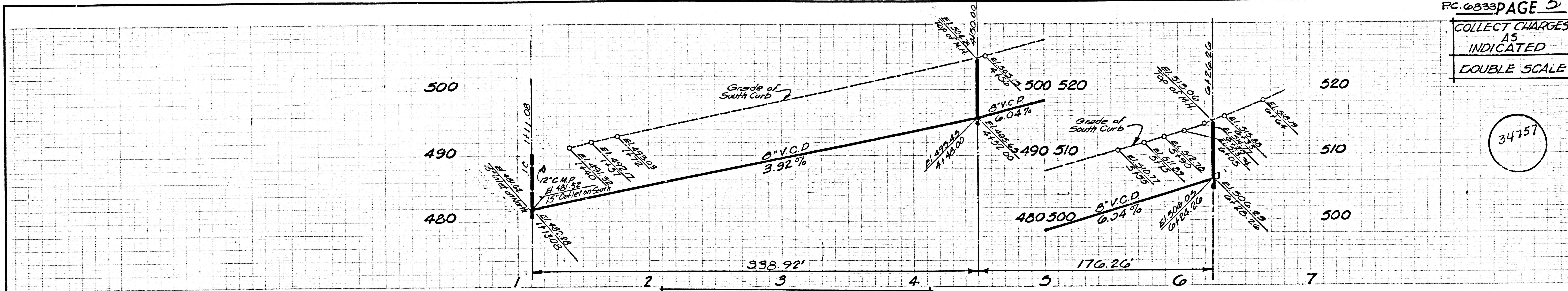


NO CHARGE FOR CONNECTION
DOUBLE SCALE

34756

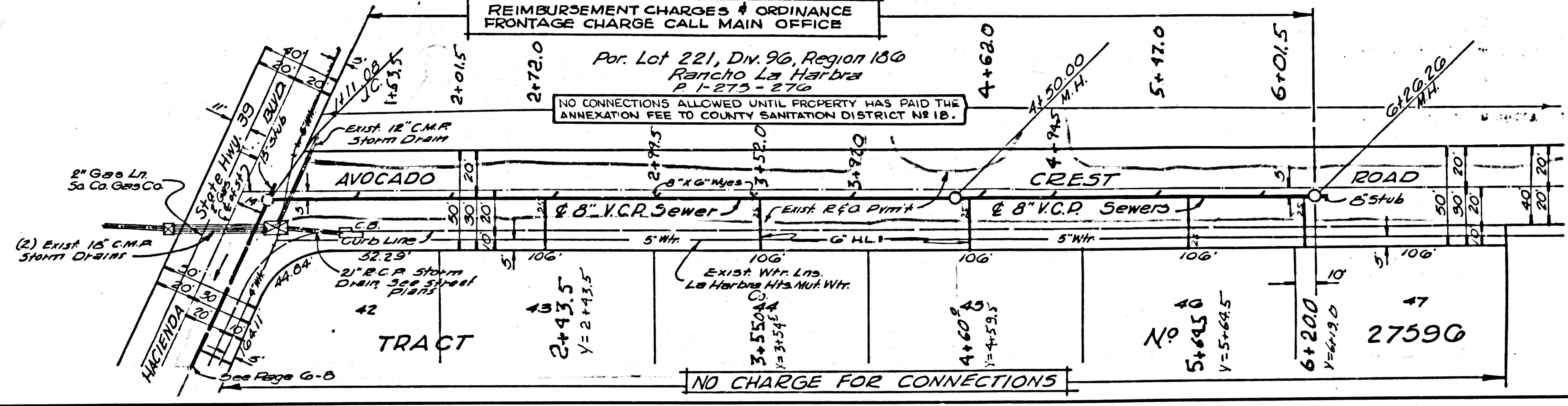


COLLECT CHARGES AS INDICATED
DOUBLE SCALE



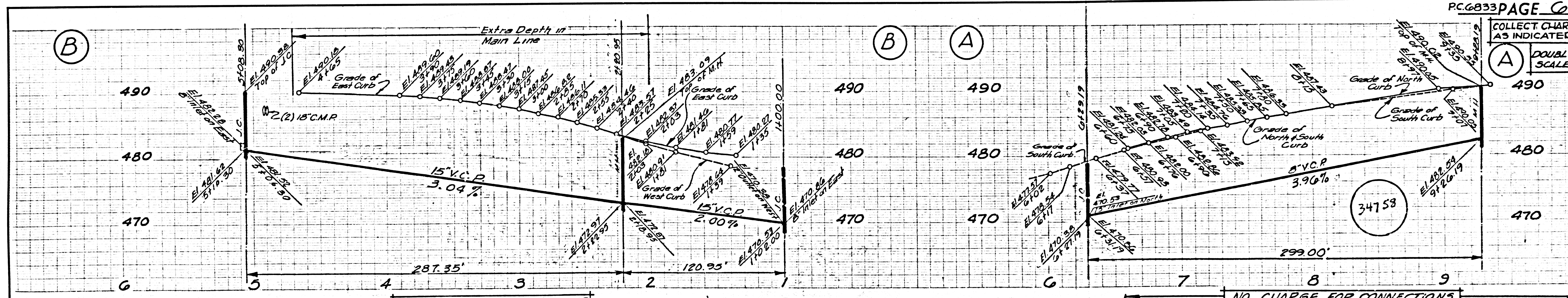
REIMBURSEMENT CHARGES & ORDINANCE FRONTAGE CHARGE CALL MAIN OFFICE

Por. Lot 221, Div. 96, Region 150
Rancho La Habra
P.L. 273-276
NO CONNECTIONS ALLOWED UNTIL PROPERTY HAS PAID THE ANNEXATION FEE TO COUNTY SANITATION DISTRICT NO. 18.



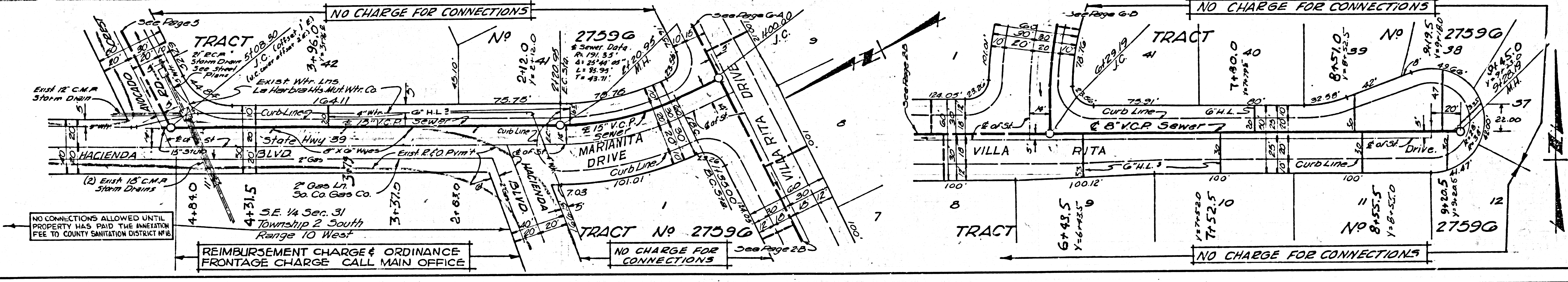
NO CHARGE FOR CONNECTIONS

COLLECT CHARGE AS INDICATED
DOUBLE SCALE



NO CHARGE FOR CONNECTIONS

NO CHARGE FOR CONNECTIONS



REIMBURSEMENT CHARGE & ORDINANCE FRONTAGE CHARGE CALL MAIN OFFICE

NO CHARGE FOR CONNECTIONS

NO CHARGE FOR CONNECTIONS