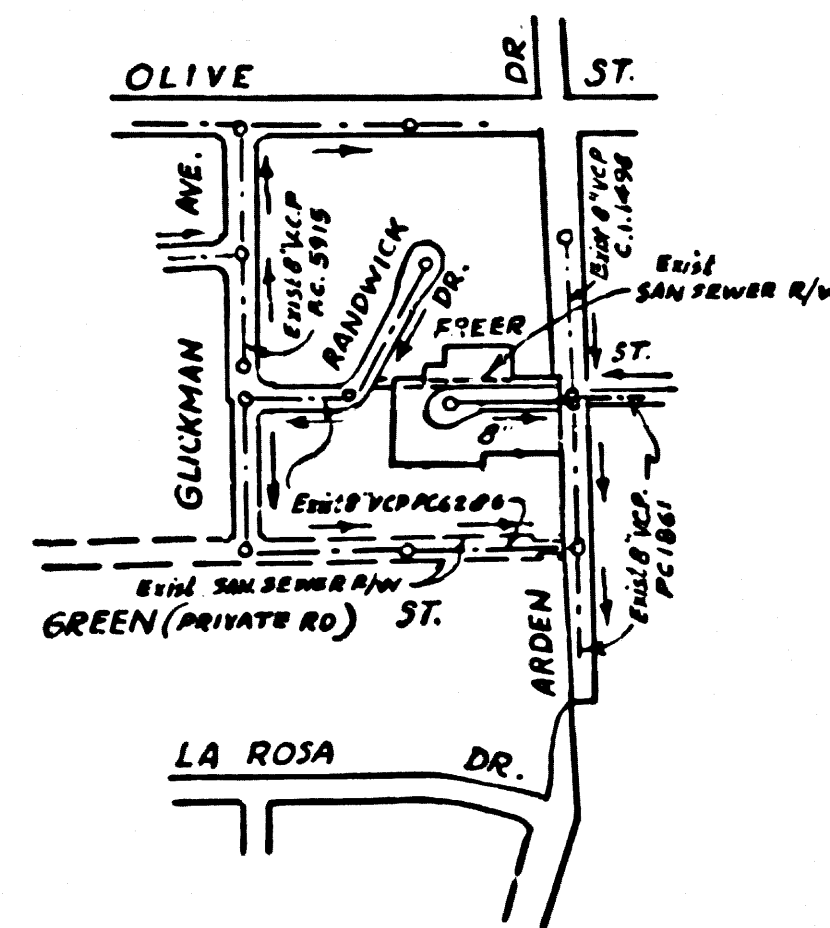


P.C. 6841 TR 29148

B.M. S.G. 293 ELEV. 326.882  
 Round Head Spk. in W. Curb El Monte  
 Ave. 210 S. of B.C.R. @ S. W. Cor. Freer St. &  
 El Monte Ave. Mkd "T.E." # 461.  
 ARCADIA QUAD. 1960



INDEX MAP  
 SCALE: 1"=600'  
 TRACT NO. 29148  
 P.C. 6841

NO WATER WELLS WITHIN 200'  
 NT  
 1-13-64

# TEMPLE CITY BLDG. DIST. NO. 5.08

- PROFILES ALIGNMENT AND GRADE OF  
**SANITARY SEWERS** PAGE 1  
 TO BE CONSTRUCTED IN  
**TRACT NO. 29148**  
**PRIVATE CONTRACT NO. 6841**  
 W.S.44  
 1 SHEET, 2 PAGES  
 SCALE: VERT. 1"=4' HORIZ. 1"=40' NOVEMBER, 1963  
 PREPARED IN THE OFFICES OF  
**HILLCREST ENGINEERING CORPORATION**  
 KAREL H. TONGLET REG. C.E. NO. 1832  
 FOR LEGEND SEE PLAN NO. S-664
- NOTE:  
 1. PROVIDE STAKES ON THE PROPERTY LINE OR PROPERTY LINES PRODUCED AT RIGHT ANGLES TO THE SEWER LINE AT THE CENTER LINE OF EACH MANHOLE.  
 2. NO REPRESENTATIVE OF THE CITY ENGINEER WILL SURVEY OR LAY OUT ANY PORTION OF THE WORK.  
 3. THE PRIVATE ENGINEER SHALL FURNISH THE CITY ENGINEER WITH GRADE SHEETS AND STATIONING FOR ALL HOUSE LATERALS AND Y BRANCHES AND SHALL PROVIDE STAKES FOR THEM AT THEIR PROPER LOCATIONS WITH STATIONING PLAINLY MARKED. ALL HOUSE LATERALS SHALL BE CONSTRUCTED IN A STRAIGHT ALIGNMENT AT RIGHT ANGLES FROM THE MAIN LINE SEWER EXCEPT AS SHOWN ON THE PLANS. HOUSE LATERALS FROM CHIMNEYS SHALL NOT HAVE AN ANGLE OF LESS THAN 45° WITH THE MAIN LINE SEWER. ANY CHANGE IN ALIGNMENT SHALL BE REQUESTED IN WRITING BY THE PRIVATE ENGINEER.  
 4. THE PRIVATE ENGINEER SHALL FURNISH THE HOUSE LATERAL DEPTH AT THE PROPERTY LINE BELOW THE TOP OF CURB ELEVATION FOR EACH HOUSE LATERAL ON THE GRADE SHEET.  
 5. NO REVISIONS SHALL BE MADE IN THESE PLANS WITHOUT THE APPROVAL OF THE CITY ENGINEER.  
 6. THE CONTRACTOR SHALL NOTIFY THE CONSTRUCTION DIVISION BY TELEPHONE, MADISON 9-4747, EXT. 8158, AT LEAST TWENTY-FOUR HOURS BEFORE STARTING ANY WORK UNDER THIS CONTRACT.  
 7. MANHOLES SHALL BE BRICK SEWER STRUCTURES PER S-104. PRECAST CONCRETE MANHOLES PER S-135 OR S-173 MAY BE USED AS AN ALTERNATE IN LOCATIONS APPROVED BY THE CITY ENGINEER.  
 8. USE STANDARD MANHOLE FRAMES AND COVERS, S-677.  
 9. MANHOLE TOPS IN UNIMPROVED RIGHTS-OF-WAY TO BE SIX INCHES ABOVE FINISHED GRADE.  
 10. USE EXTRA STRENGTH PIPE ALL PIPE IS STAMPED DEPTH.  
 11. USE CLEANST MORTAR OR MECHANICAL COMPRESSION JOINTS FOR ALL V.C.P. JOINTS PER SPECS. SECS. 36 & 48.  
 12. WHENEVER EXISTING WATER IS ENCOUNTERED DURING THE CONSTRUCTION OF THE SEWERS, THE V.C.P. JOINTS SHALL BE OF JOINT COMPOUND PER SPECS. SECS. 33 & 48, OR MECHANICAL COMPRESSION JOINTS PER SPECS. SEC. 34.  
 13. IF A POWER POLE IS WITHIN THREE FEET OF THE SEWER, THE SEWER SHALL BE ENCASED, PER S-173, CASE II, TWO FEET ON EITHER SIDE FROM THE POINT OF INTERFERENCE.  
 14. IF DURING THE COURSE OF CONSTRUCTION IT IS DETERMINED THAT THERE IS LESS THAN FOUR FEET OF COVER OVER THE TOP OF A MAIN LINE OR HOUSE LATERAL V.C.P. SEWER WHICH IS NOT INDICATED ON THE PLANS, THE PIPE SHALL BE ENCASED PER S-173, CASE III, UNLESS OTHERWISE APPROVED BY THE CITY ENGINEER.  
 15. HOUSE LATERALS TO BE CONSTRUCTED WITH INVERTS AT PROPERTY LINE, 6" FEET BELOW CURB GRADE EXCEPT AS NOTED.  
 16. RESURFACE ALL TRENCHES WITHIN PAVED AREAS TO MEET CITY OF TEMPLE CITY OR CALIFORNIA STATE HIGHWAY REQUIREMENTS IN ACCORDANCE WITH PERMITS.  
 17. FOR ALLOWABLE LEAKAGE TEST USE FORMULA NO. 1, SPECS. SEC. 54.  
 18. USE MECHANICAL COMPRESSION JOINTS FOR ALL V.C.P. HOUSE LATERALS PER SPECS. SEC. 34 & 49.  
 19. ALL STATE AND LOCAL TRENCH SAFETY ORDERS WILL BE RIGIDLY ENFORCED.  
 20. STANDARD SPECIFICATIONS DATED MAY 25, 1962, APPLY IN THE CONSTRUCTION OF THIS PROJECT.

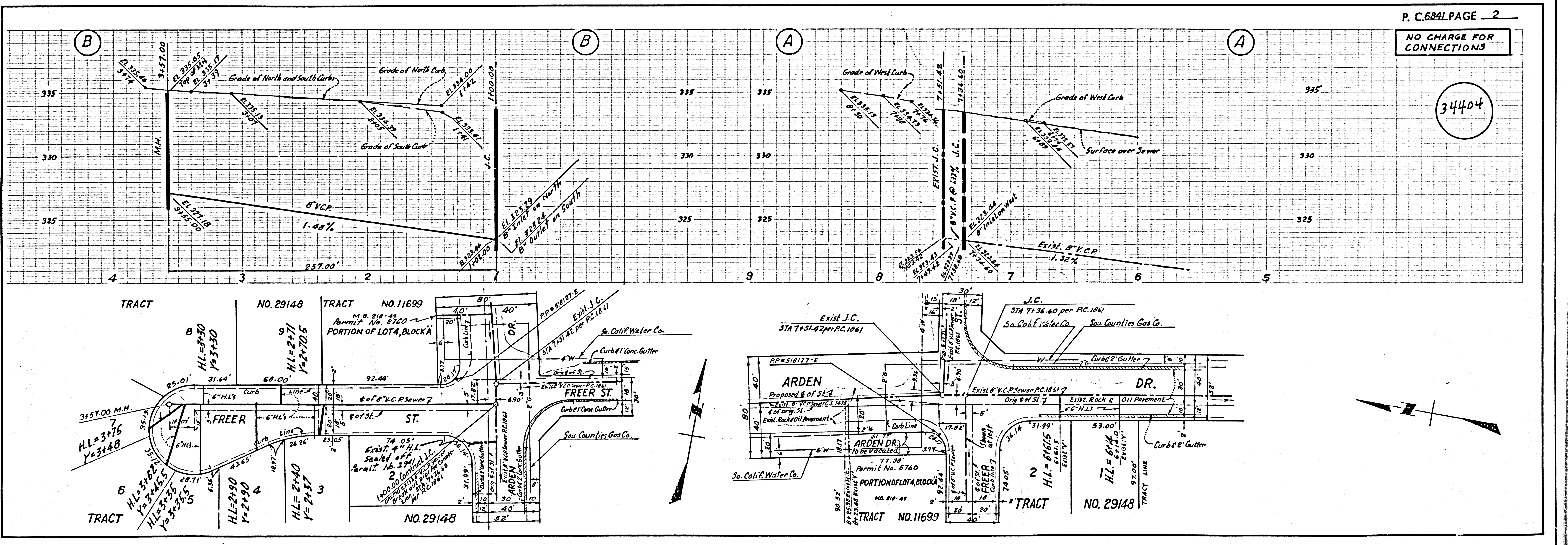
CITY OF TEMPLE CITY, CALIFORNIA  
 JOHN A. LAMBIE, CITY ENGINEER  
 APPROVED BY: *[Signature]* ASSISTANT SANITATION ENGINEER  
 SUBMITTED BY: *[Signature]* REGIONAL ENGINEER  
 CHECKED BY: *[Signature]* REG. C.E. NO. 7182

J. D. PARKURST, CHIEF ENGINEER  
 CO. SAN. DIST. NO. 2  
 APPROVED BY: *[Signature]* OFFICE ENGINEER

J. N.

COLLECT CHARGES  
 AS INDICATED  
*[Signature]* 1/16/64

NO CONNECTIONS FOR THE DISPOSAL OF INDUSTRIAL WASTES SHALL BE MADE TO SEWERS SHOWN ON THESE DRAWINGS WITHOUT WRITTEN PERMISSION FROM THE CHIEF ENGINEER AND GENERAL MANAGER OF THE COUNTY SANITATION DISTRICTS.



P.C. 6841 PAGE 2  
 NO CHARGE FOR CONNECTIONS

34404