

B.M. 57 3385 ELEV. 38.275  
 Std. Man (County Surveyors) in well  
 with cover @ intersection Del.  
 Amo Blvd. & Pioneer Blvd.  
 Artesia QUAD. 1955

**SUBSTRUCTURE NOTE**

THE EXISTENCE AND LOCATION OF ANY UNDERGROUND  
 UTILITY PIPES OR STRUCTURES SHOWN ON THESE PLANS  
 ARE OBTAINED BY A SEARCH OF AVAILABLE RECORDS.  
 TO THE BEST OF OUR KNOWLEDGE THERE ARE NO  
 EXISTING UTILITIES EXCEPT AS SHOWN ON THIS MAP.  
 THE CONTRACTOR IS REQUIRED TO TAKE DUE PRECAUTIONARY  
 MEASURES TO PROTECT THE UTILITY LINES SHOWN AND  
 ANY OTHER LINES NOT OF RECORD OR NOT SHOWN  
 ON THIS DRAWING

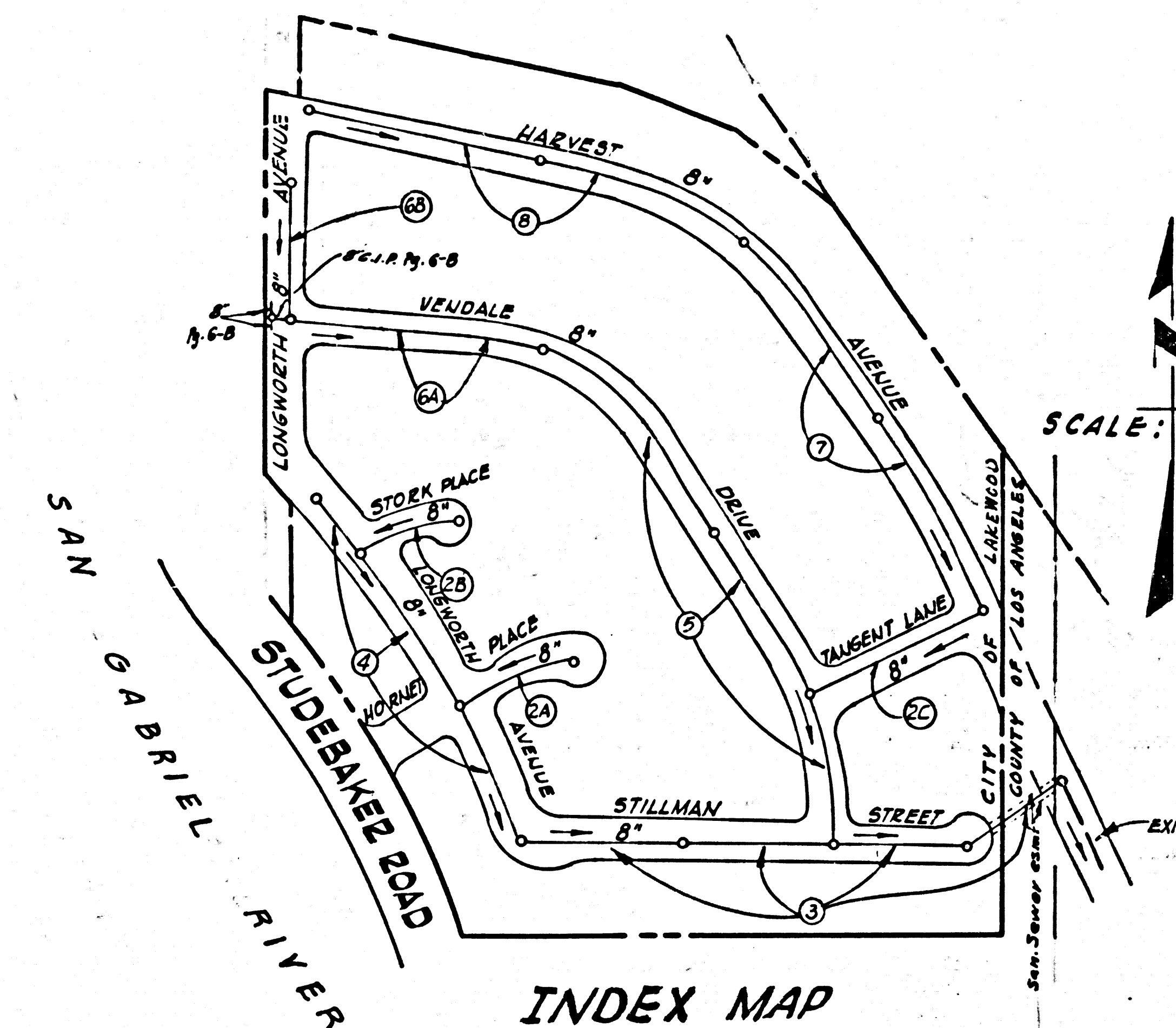
**LAKWOOD BLDG. DIST. NO. 4.01**

PROFILE ALIGNMENT AND GRADE OF **P.C. 6849**  
**SANITARY SEWERS - PAGE 1**  
 TO BE CONSTRUCTED IN  
**TRACT N<sup>o</sup> 28581**

**PRIVATE CONTRACT NO. 6849**

W.S. 31 C-1  
 4 SHEETS, 8 PAGES  
 SCALE: VERT. 1"=4'  
 HORIZ. 1"=40'  
 JANUARY, 1964  
 PREPARED IN THE OFFICES OF  
**PARAMOUNT ENGINEERING CO.**  
 REG. C. E. NO. 12955

34693



**INDEX MAP**  
 TRACT N<sup>o</sup> 28581 PC 6849

NOTE: Numbers in Circles indicate page numbers

- NOTES:
1. PROVIDE STAKES ON THE PROPERTY LINE OR PROPERTY LINES PRODUCED AT RIGHT ANGLES TO THE SEWER LINE AT THE CENTER LINE OF EACH MANHOLE.
  2. NO REPRESENTATIVE OF THE CITY ENGINEER WILL SURVEY OR LAY OUT ANY PORTION OF THE WORK.
  3. THE PRIVATE ENGINEER SHALL FURNISH THE CITY ENGINEER WITH GRADE SHEETS AND STATIONING FOR ALL HOUSE LATERALS AND T BRANCHES AND SHALL PROVIDE STAKES FOR THEM AT THEIR PROPER LOCATIONS WITH ELONGATING PLANNY MARKS. ALL HOUSE LATERALS SHALL BE CONSTRUCTED IN A STRAIGHT ALIGNMENT AT RIGHT ANGLES FROM THE MAIN LINE SEWER EXCEPT AS SHOWN ON THE PLANS. HOUSE LATERALS SHALL BE CONSTRUCTED AT RIGHT ANGLES FROM THE MAIN LINE SEWER EXCEPT AS SHOWN ON THE PLANS. ANY CHANGE IN ALIGNMENT SHALL BE REQUESTED BY WRITING BY THE PRIVATE ENGINEER.
  4. THE PRIVATE ENGINEER SHALL FURNISH THE HOUSE LATERAL DEPTH AT THE PROPERTY LINE BELOW THE TOP OF CURB ELEVATION FOR EACH HOUSE LATERAL ON THE GRADE SHEET.
  5. NO REVISIONS SHALL BE MADE IN THESE PLANS WITHOUT THE APPROVAL OF THE CITY ENGINEER.
  6. THE CONTRACTOR SHALL NOTIFY THE CONSTRUCTION DIVISION BY TELEPHONE, MADISON 9-4747, EXT. 8155, AT LEAST TWENTY-FOUR HOURS BEFORE STARTING ANY WORK UNDER THIS CONTRACT.
  7. MANHOLES SHALL BE BRICK SEWER STRUCTURES PER S-304, PRECAST CONCRETE MANHOLES PER S-135 OR S-173 MAY BE USED AS AN ALTERNATE IN LOCATIONS APPROVED BY THE CITY ENGINEER.
  8. USE STANDARD MANHOLE FRAMES AND COVERS, S-117, EXCEPT AS NOTED.
  9. MANHOLES SHALL BE CONSTRUCTED TO THE FINISHED GRADE UNLESS OTHERWISE NOTED.
  10. USE EXTRA STRENGTH PIPE. ALL PIPE IS STANDARD DEPTH UNLESS OTHERWISE NOTED.
  11. USE MECHANICAL COMPRESSION JOINTS FOR ALL V.C.P. JOINTS PER SPEC. SEC. 34, 48 & 49.
  12. MANHOLES SHALL BE CONSTRUCTED TO THE FINISHED GRADE UNLESS OTHERWISE NOTED.
  13. IF A POWER POLE IS WITHIN THREE FEET OF THE SEWER, THE SEWER SHALL BE ENCASED, PER S-173, CASE III, TWO FEET ON EACH SIDE FROM THE POINT OF INTERFERENCE.
  14. IF DURING THE COURSE OF CONSTRUCTION IT IS DETERMINED THAT THERE IS LESS THAN FOUR FEET OF COVER OVER THE TOP OF A MAIN LINE OR HOUSE LATERAL V.C.P. SEWER WHICH IS NOT INDICATED ON THE PLANS, THE PIPE SHALL BE ENCASED PER S-173, CASE III, UNLESS OTHERWISE APPROVED BY THE CITY ENGINEER.
  15. HOUSE LATERALS TO BE CONSTRUCTED WITH 1/4" RISE PER FOOT TO PROPERTY LINE.
  16. RESURFACE ALL TRENCHES WITHIN PAVED AREAS TO MEET L.A. COUNTY ROAD DEPT. OR CALIFORNIA STATE HIGHWAY REQUIREMENTS IN ACCORDANCE WITH PERMITS.
  17. FOR ALLOWABLE LEAKAGE TEST USE FORMULA NO. 2, SPEC. SEC. 54.
  18. ALL STATE AND LOCAL TRENCH SAFETY ORDERS WILL BE RIGIDLY ENFORCED.

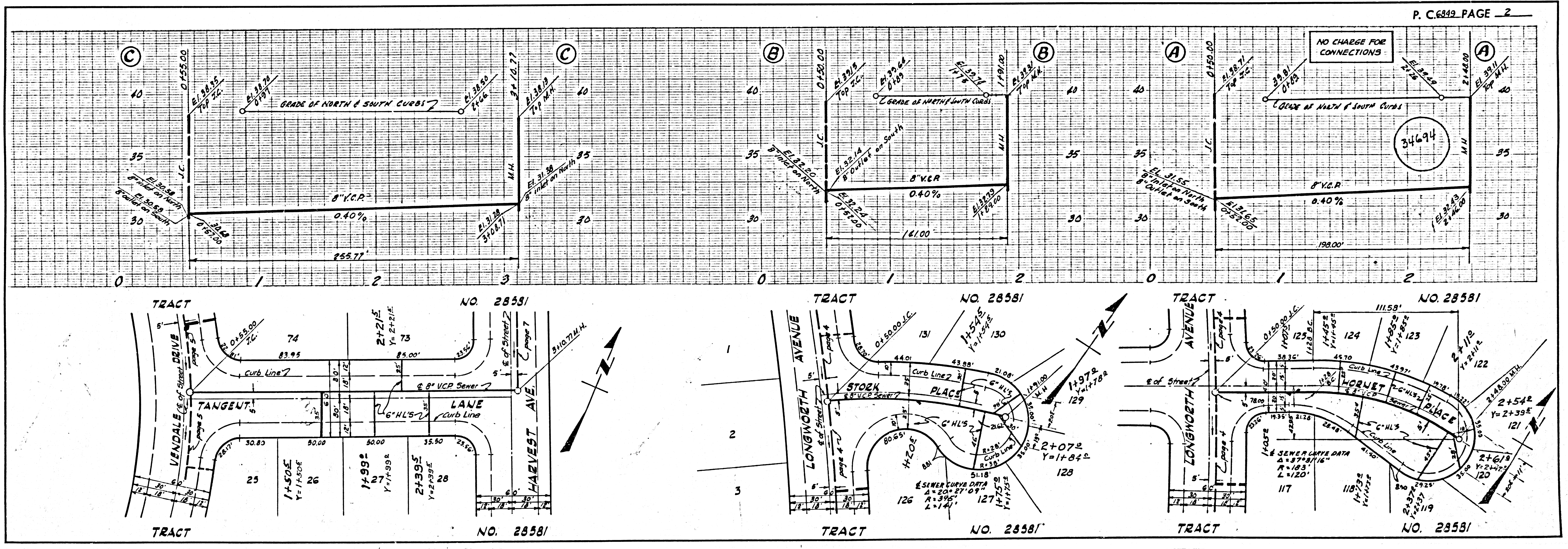
**COLLECT CHARGES AS INDICATED**

NO CONNECTIONS FOR THE DISPOSAL OF INDUSTRIAL WASTES SHALL BE MADE TO SEWERS SHOWN ON THESE DRAWINGS WITHOUT WRITTEN PERMISSION FROM THE CHIEF ENGINEER AND GENERAL MANAGER OF THE COUNTY SANITATION DISTRICTS.

REVISION APPROVED  
 OFFICE OF THE COUNTY ENGINEER  
 Sewer Line - Revised on Pgs. 6A, 6B & Index Map

NOTE:  
 GRADES TO WHICH THIS IMPROVEMENT IS TO BE CONSTRUCTED ARE SHOWN ON PLANS AND PROFILES. GRADE POINTS FOR TOP OF CURBS, CENTER LINE OF STREETS, OR CENTER LINE OF ALLEYS ARE SHOWN BY CIRCLES ON PROFILES. AT ALL POINTS BETWEEN DESIGNATED POINTS THE GRADE SHALL BE ESTABLISHED SO AS TO CONFORM TO A STRAIGHT LINE DRAWN BETWEEN SAID DESIGNATED POINTS. ELEVATIONS ARE IN FEET ABOVE U.S.C. & G.S. SEA LEVEL DATUM OF 1929.  
 THIS DRAWING AND THE DATA HEREON ARE HEREBY MADE A PART OF THE SPECIFICATIONS. WORK SHALL BE CONSTRUCTED ACCORDING TO STANDARD SPECIFICATIONS DATED JULY 22, 1962, ON FILE IN THE OFFICE OF THE CITY ENGINEER AND SHALL BE PROSECUTED ONLY IN THE PRESENCE OF THE CITY ENGINEER.  
 BEFORE WORK CAN BE STARTED, THE CONTRACTOR MUST OBTAIN A PERMIT TO LOCATE IN CITY STREETS FROM THE L.A. COUNTY ROAD DEPT., DISTRICT OFFICE NO. 4, AND MAKE A DEPOSIT WITH THE CITY OF LAKWOOD, 5050 SOUTH CLARK AVENUE, LAKWOOD, CALIFORNIA, SUFFICIENT TO COVER THE COST OF CONSTRUCTION INSPECTION AND RECORD PLANS.  
 APPROVAL OF THIS PLAN BY THE CITY OF LAKWOOD DOES NOT CONSTITUTE A REPRESENTATION AS TO THE ACCURACY OF THE LOCATION OR OF THE EXISTENCE OR NON-EXISTENCE OF ANY UNDERGROUND UTILITY PIPE OR STRUCTURE WITHIN THE LIMITS OF THIS PROJECT. THIS NOTE APPLIES TO ALL PAGES.  
 IF WORK IS TO BE DONE IN A STATE HIGHWAY, A PERMIT MUST BE OBTAINED FROM THE STATE OF CALIFORNIA, DIVISION OF HIGHWAYS, 126 SOUTH SPRING STREET, LOS ANGELES, CALIFORNIA.

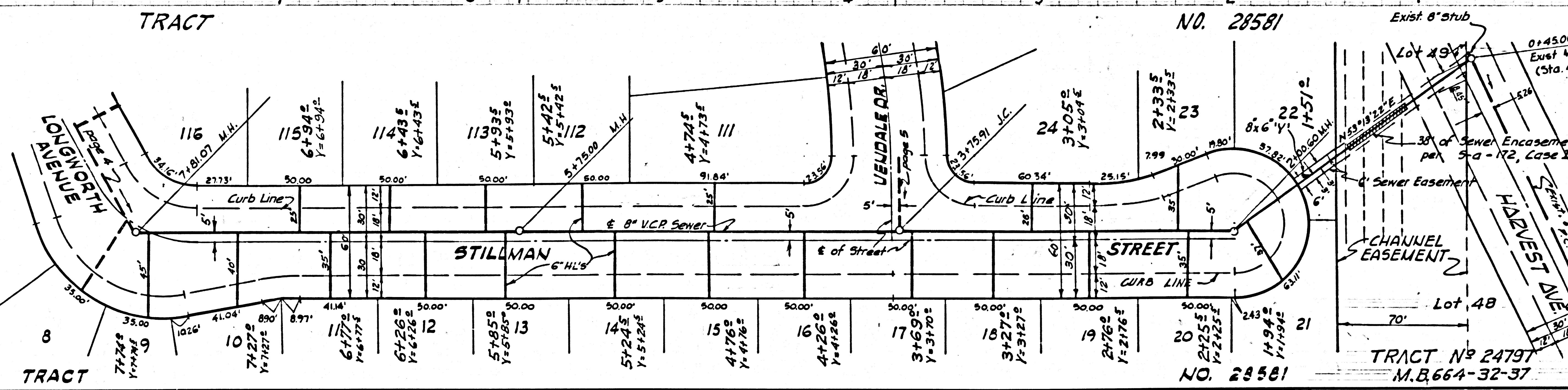
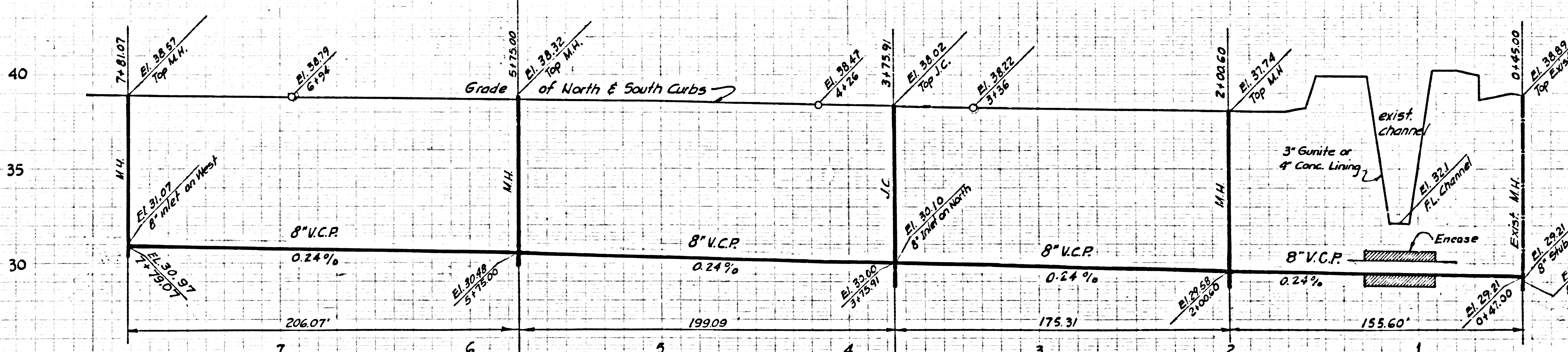
**CITY OF LAKWOOD, CALIFORNIA**  
 JOHN A. LAMBIE, CITY ENGINEER  
 J. D. PARKHURST, CHIEF ENGINEER  
 CO. SAN. DIST. NO. 4  
 APPROVED BY: *R. S. K.* ASSISTANT SANITATION ENGINEER  
 APPROVED BY: *J. D. Parkhurst* OFFICE ENGINEER  
 SUBMITTED BY: *W. L. S.* 2-18-64  
 LOS ANGELES REGIONAL ENGINEER NO. 3071  
 CHECKED BY: *J. D. Parkhurst*  
 REG. C. E. NO. 12878



NO CHARGE FOR CONNECTIONS

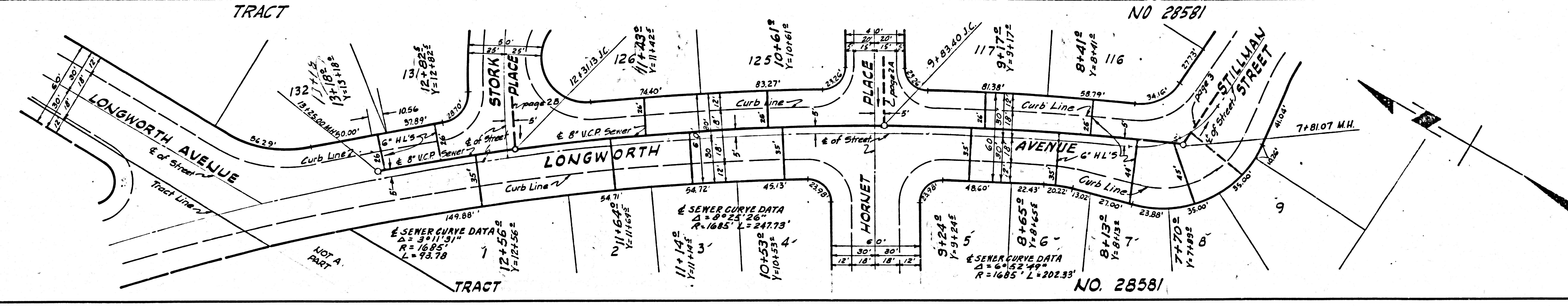
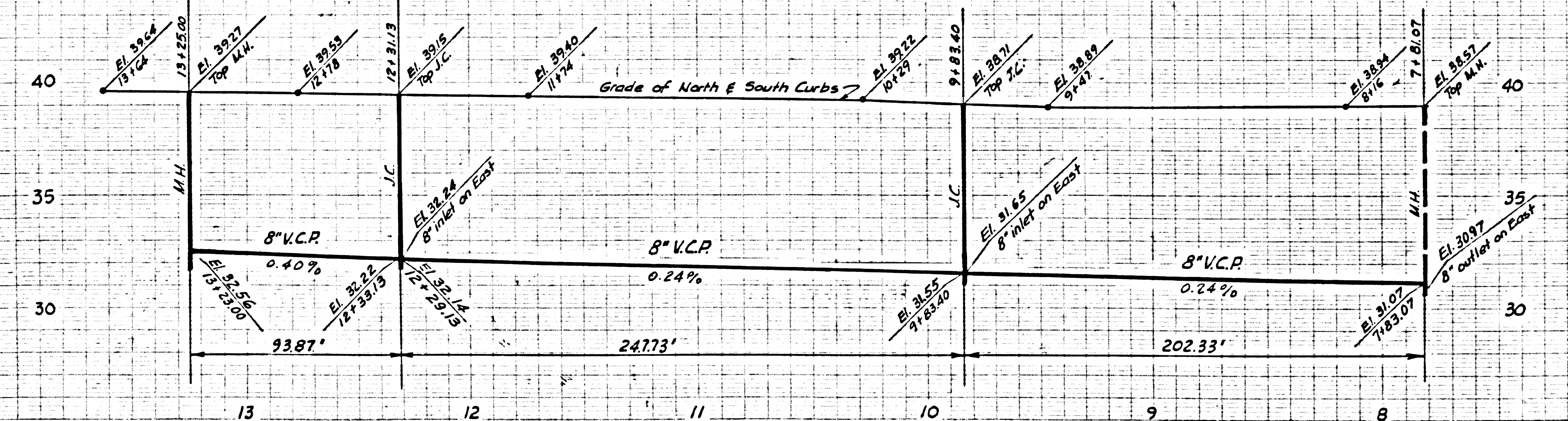
34695

AS SHOWN  
18285.01 FT



NO CHARGE FOR CONNECTIONS

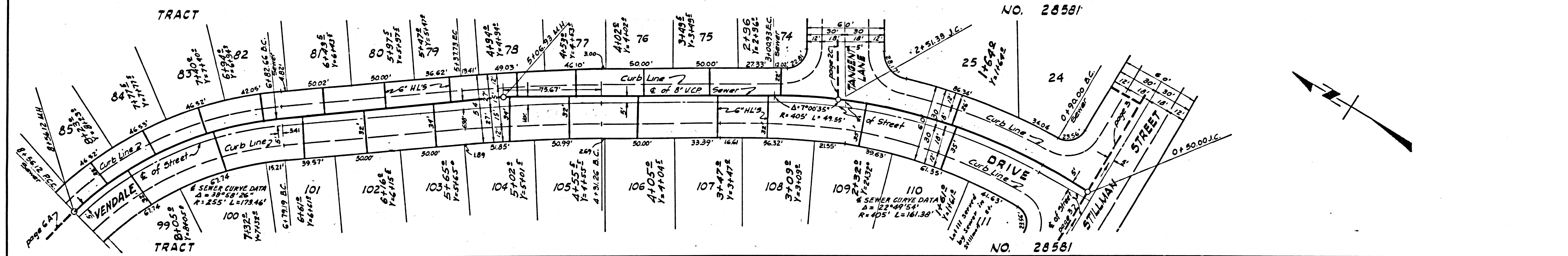
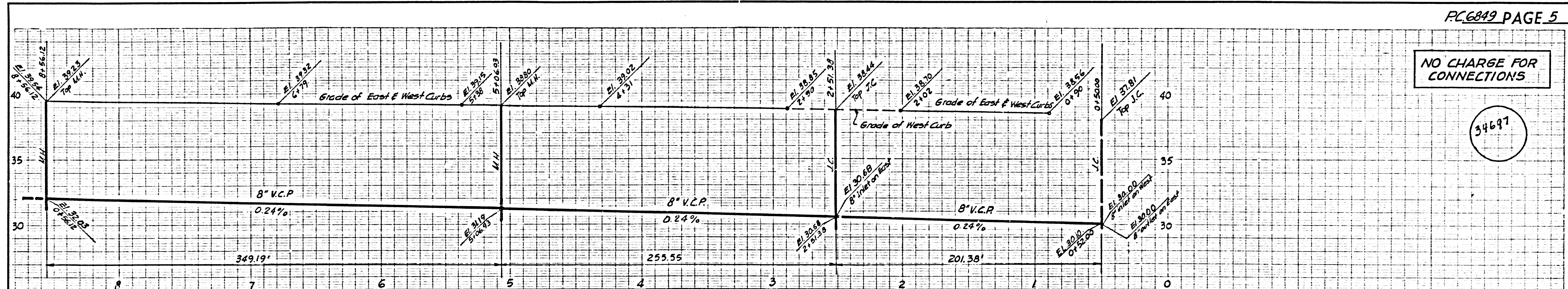
34696



DESIGN BY P.K.  
DRAWN BY A.L.L.

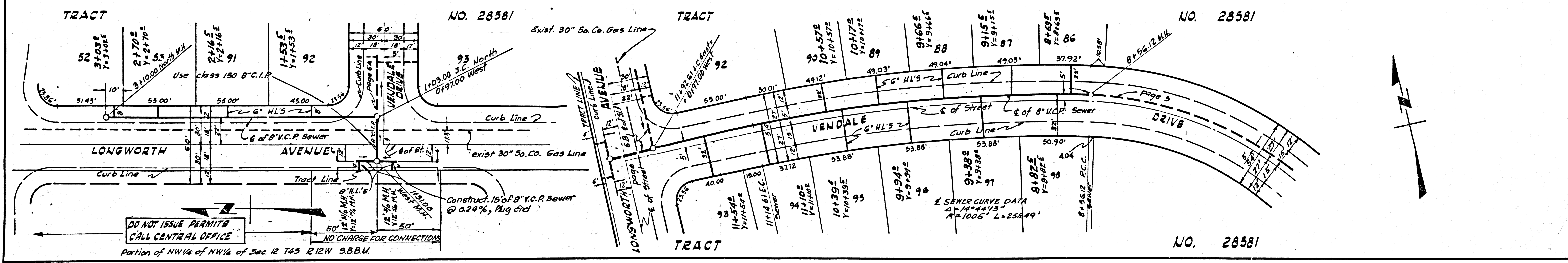
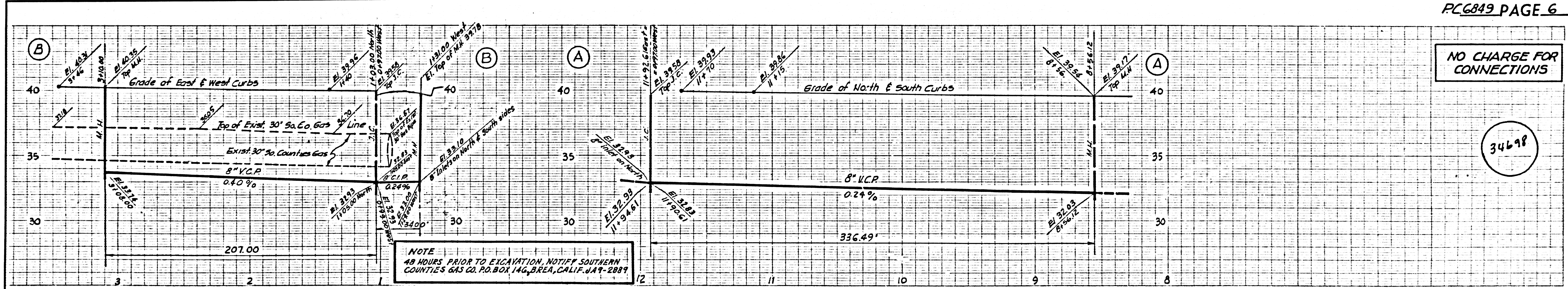
NO CHARGE FOR CONNECTIONS

34697



NO CHARGE FOR CONNECTIONS

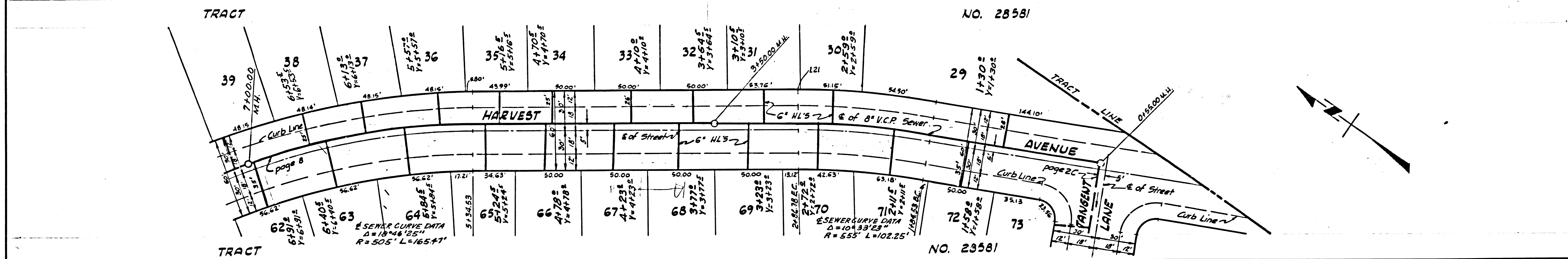
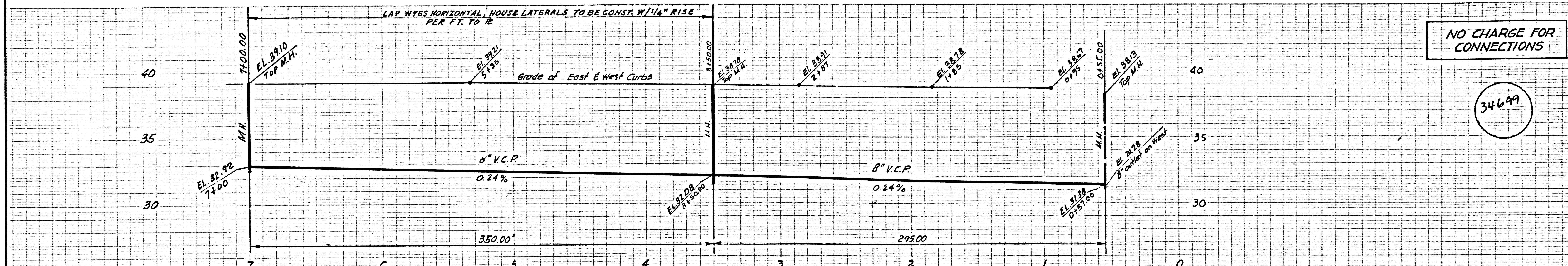
34698



Design By P.K.  
Drawn By A.M.

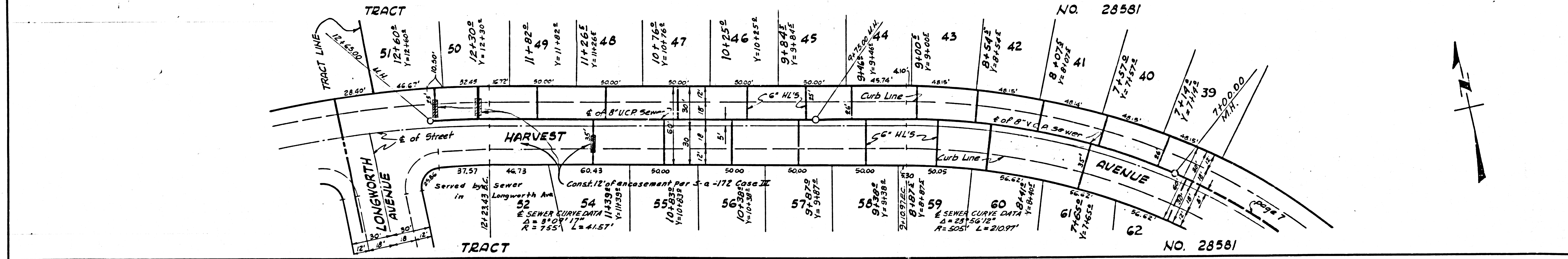
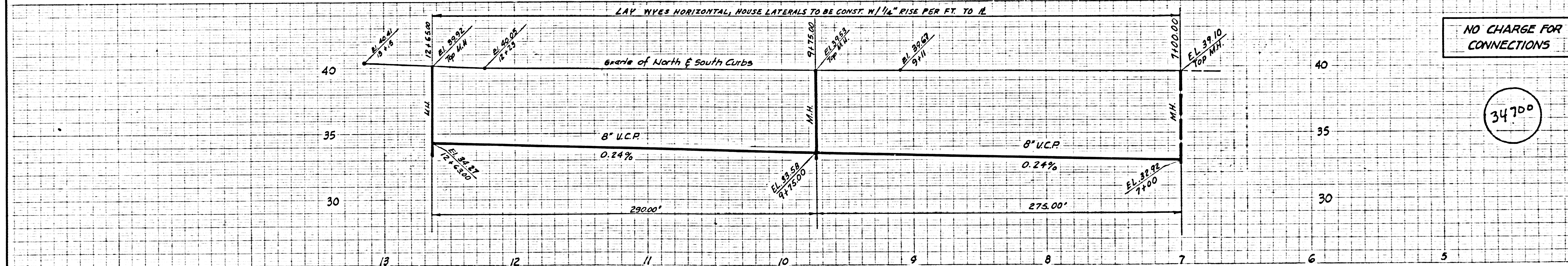
NO CHARGE FOR CONNECTIONS

34699



NO CHARGE FOR CONNECTIONS

34700



DESIGNED BY P.K.  
DRAWN BY A.M.