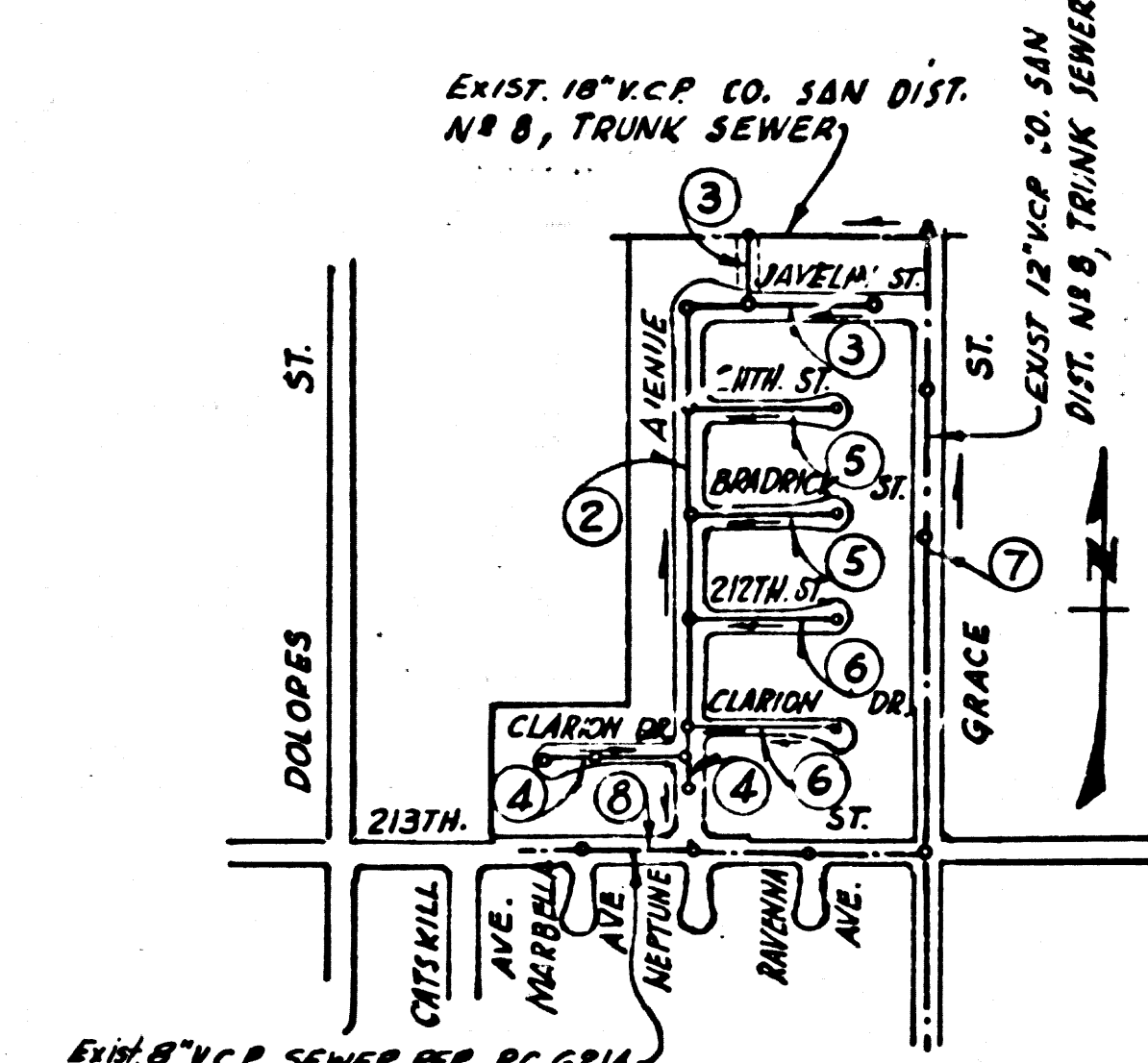


B.M. SY 3114 A ELEV. 14.713  
 FOUND LEAD BENCH NAIL IN CONCRETE  
 BASE OF 4" 12" 40" WEST OF AVALON BLV.  
 25' S. OF 213TH STREET & INTERSECTION  
 GARDENA QUAD. 19 60



INDEX MAP  
 TRACT No 29135  
 SCALE: 1" = 600'  
 P.C. 6850

LOMITA BLDG. DIST. NO. 12

PROFILE ALIGNMENT AND GRADE OF  
**SANITARY SEWERS** PAGE 1  
 TO BE CONSTRUCTED IN  
**TRACT No 29135**

PRIVATE CONTRACT NO. 6850

W.S. 28  
 4 SHEETS, 8 PAGES

SCALE: VERT. 1" = 4' HORIZ. 1" = 40' DEC, 1963

PREPARED IN THE OFFICES OF  
**LANCO ENGINEERS,**

By: Clark M. Leonard  
 REG. C. E. NO. 13167

36243

FOR LEGEND SEE PLAN NO. S-6-64

- NOTES:
1. PROVIDE STAKES ON THE PROPERTY LINE OR PROPERTY LINES PRODUCED AT RIGHT ANGLES TO THE SEWER LINE AT THE CENTER LINE OF EACH MANHOLE.
  2. NO REPRESENTATIVE OF THE COUNTY ENGINEER WILL SURVEY OR LAY OUT ANY PORTION OF THE WORK.
  3. THE PRIVATE ENGINEER SHALL FURNISH THE COUNTY ENGINEER WITH GRADE SHEETS AND STATIONING FOR ALL HOUSE LATERALS AND Y BRANCHES AND SHALL PROVIDE STAKES FOR THEM AT THEIR PROPER LOCATIONS WITH STATIONING PLAINLY MARKED. ALL HOUSE LATERALS SHALL BE CONSTRUCTED IN A STRAIGHT ALIGNMENT AT RIGHT ANGLES FROM THE MAIN LINE SEWER EXCEPT AS SHOWN ON THE PLANS. HOUSE LATERALS FROM CHIMNEYS SHALL NOT HAVE AN ANGLE OF LESS THAN 45° WITH THE MAIN LINE SEWER. ANY CHANGE IN ALIGNMENT SHALL BE REQUESTED IN WRITING BY THE PRIVATE ENGINEER.
  4. THE PRIVATE ENGINEER SHALL FURNISH THE HOUSE LATERAL DEPTH AT THE PROPERTY LINE BELOW THE TOP OF CURB ELEVATION FOR EACH HOUSE LATERAL ON THE GRADE SHEET.
  5. NO REVISIONS SHALL BE MADE IN THESE PLANS WITHOUT THE APPROVAL OF THE COUNTY ENGINEER.
  6. THE CONTRACTOR SHALL NOTIFY THE CONSTRUCTION DIVISION BY TELEPHONE, ADDRESS 9-27-27, EXT. 81581, AT LEAST TWENTY-FOUR HOURS BEFORE STARTING ANY WORK UNDER THIS CONTRACT.
  7. MANHOLES SHALL BE BRICK SEWER STRUCTURES PER S-104. PRECAST CONCRETE MANHOLES PER S-123 OR S-173 MAY BE USED AS AN ALTERNATE IN LOCATIONS APPROVED BY THE COUNTY ENGINEER.
  8. USE STANDARD MANHOLE FRAMES AND COVERS, S-117, EXCEPT AS NOTED.
  9. ALL STATE AND LOCAL TRENCH SAFETY ORDERS WILL BE RIGIDLY ENFORCED.
  10. USE EXTRA STRENGTH PIPE. ALL PIPE IS STANDARD DEPTH EXCEPT AS NOTED.
  11. USE MECHANICAL COMPRESSION JOINTS FOR ALL V.C.P. JOINTS PER SPEC'S, SECS. 34, 48 & 49.
  12. FOR ALLOWABLE LEAKAGE TEST USE FORMULA NO. 2, SPEC'S, SEC. 54.
  13. IF A POWER POLE IS WITHIN THREE FEET OF THE SEWER, THE SEWER SHALL BE ENCASED, PER S-173, CASE III, TWO FEET ON EACH SIDE TO A POINT OF INTERFERENCE.
  14. IF DURING THE COURSE OF CONSTRUCTION IT IS DETERMINED THAT THERE IS LESS THAN FOUR FEET OF COVER OVER THE TOP OF A MAIN LINE OR HOUSE LATERAL V.C.P. SEWER WHICH IS NOT INDICATED ON THE PLANS, THE PIPE SHALL BE ENCASED PER S-173, CASE III, UNLESS OTHERWISE APPROVED BY THE COUNTY ENGINEER.
  15. HOUSE LATERALS TO BE CONSTRUCTED WITH INVERTS AT PROPERTY LINE... 6... FEET BELOW CURB GRADE EXCEPT AS NOTED.
  16. RESURFACE ALL TRENCHES WITHIN PAVED AREAS TO MEET L.A. COUNTY ROAD DEPT. OR CALIFORNIA STATE HIGHWAY REQUIREMENTS IN ACCORDANCE WITH PERMITS.
  17. NO CONSTRUCTION WILL BE PERMITTED IN PILED AREAS UNLESS ACCEPTABLE CERTIFICATION IS SUBMITTED TO THE CONSTRUCTION DIVISION OF THE COUNTY ENGINEER'S DEPARTMENT THAT COMPACTION IS GREATER THAN 80% PER TEST D-599-4E T.
  18. IF THE RELATIVE DENSITY OF COMPACTION IS LESS THAN 80%, ALL MAIN LINE AND HOUSE LATERALS SHALL BE CRADLED PER S-173 OR HAVE A SPECIAL BASE COURSE PER S-173 CASE III SPECIAL MANHOLE BASES PER S-123 ARE REQUIRED.
  19. IF COMPACTION IS GREATER THAN 80% CRADLING IS NOT REQUIRED, SPECIAL MANHOLE BASES ARE NOT REQUIRED.
  18. CONTRACTOR TO NOTIFY Mr. Robert Powell OF THE SANITATION DISTRICT AT NE-65097 24 HOURS PRIOR TO CONSTRUCTION.
  19. SPECIAL COMPACTION OF BACKFILL IN THOSE AREAS INDICATED ON PLANS WILL CONSIST OF MECHANICALLY TAMPED LAYERS OVER A SAND BASE IN ACCORDANCE WITH SEC. 52 OF THE STANDARD SPEC'S.

NOTE:  
 GRADES TO WHICH THIS IMPROVEMENT IS TO BE CONSTRUCTED ARE SHOWN ON PLANS AND PROFILES. GRADE POINTS FOR TOP OF CURBS, CENTER LINE OF STREETS, OR CENTER LINE OF ALLEYS ARE SHOWN BY CIRCLES ON PROFILES. AT ALL POINTS BETWEEN DESIGNATED POINTS THE GRADE SHALL BE ESTABLISHED SO AS TO CONFORM TO A STRAIGHT LINE DRAWN BETWEEN SAID DESIGNATED POINTS. ELEVATIONS ARE IN FEET ABOVE U.S.C. & G.S. SEA LEVEL DATUM OF 1929.  
 THIS DRAWING AND THE DATA HEREON ARE HEREBY MADE A PART OF THE SPECIFICATIONS.  
 WORK SHALL BE CONSTRUCTED ACCORDING TO STANDARD SPECIFICATIONS DATED MAY 25, 1962, ON FILE IN THE OFFICE OF THE COUNTY ENGINEER AND SHALL BE PROSECUTED ONLY IN THE PRESENCE OF THE COUNTY ENGINEER.  
 BEFORE WORK CAN BE STARTED, THE CONTRACTOR MUST OBTAIN A PERMIT TO EXCAVATE IN COUNTY STREETS FROM THE L.A. COUNTY ROAD DEPT., DISTRICT OFFICE NO. 3, AND PAY A FEE TO THE COUNTY ENGINEER, ROOM 320, COUNTY ENGINEERING BUILDING, 100 WEST SECOND STREET OR PALMS VERDES-CENTINELA VALLEY, REGIONAL OFFICE, SUFFICIENT TO COVER THE COST OF CONSTRUCTION INSPECTION AND RECORD PLANS.  
 APPROVAL OF THIS PLAN BY THE COUNTY OF LOS ANGELES DOES NOT CONSTITUTE A REPRESENTATION AS TO THE ACCURACY OF THE LOCATION OF OR THE EXISTENCE OF ANY UNDERGROUND UTILITY PIPE, OR STRUCTURE WITHIN THE LIMITS OF THIS PROJECT. THIS NOTE APPLIES TO ALL PAGES.  
 IF WORK IS TO BE DONE IN A STATE HIGHWAY, A PERMIT MUST BE OBTAINED FROM THE STATE OF CALIFORNIA, DIVISION OF HIGHWAYS, 120 SOUTH SPRING STREET, LOS ANGELES, CALIFORNIA.

COUNTY OF LOS ANGELES, CALIFORNIA  
 JOHN A. LAMBIE, COUNTY ENGINEER J. D. PARKHURST, CHIEF ENGINEER  
 CO. SAN. DIST. NO. 12

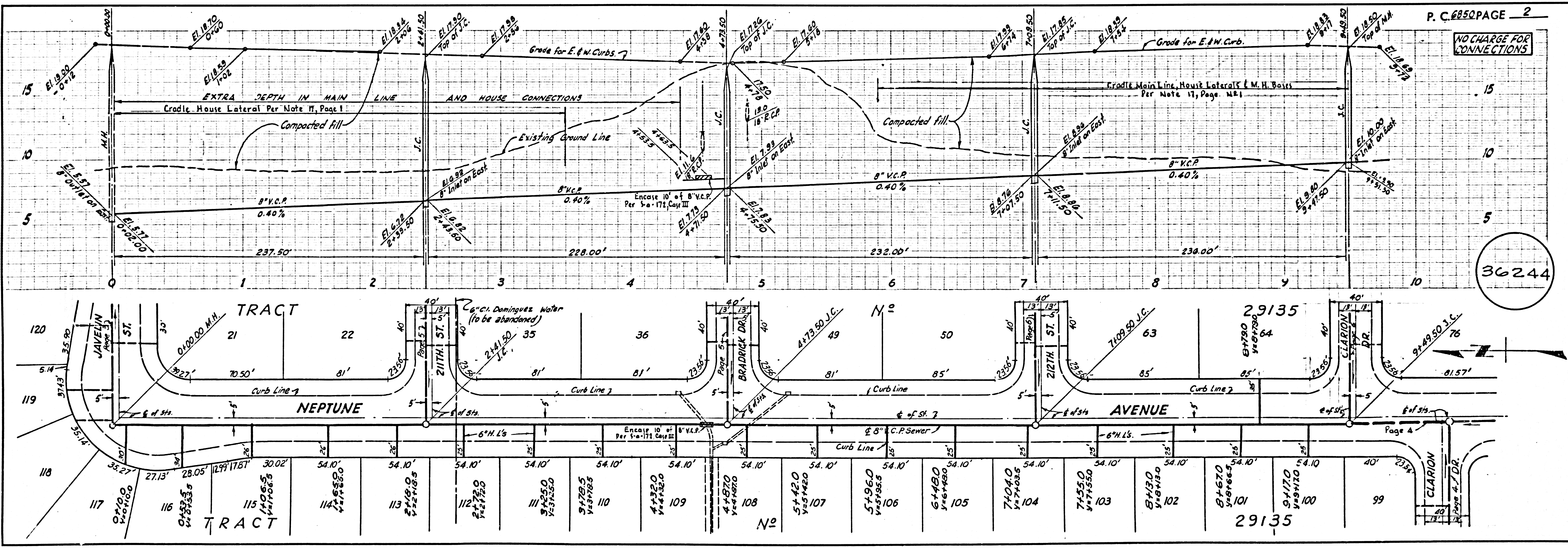
APPROVED BY: Clark M. Leonard ASSISTANT SANITATION ENGINEER  
 APPROVED BY: Robert Powell OFFICE ENGINEER

SUBMITTED BY: Clark M. Leonard REGIONAL ENGINEER  
 CHECKED BY: Robert Powell 7/3/14  
 REG. C.E. NO. 13468

COLLECT CHARGES  
 AS INDICATED  
L. P. ... 7-2-64

NO CONNECTIONS FOR THE DISPOSAL OF INDUSTRIAL WASTES SHALL BE MADE TO SEWERS SHOWN ON THESE DRAWINGS WITHOUT WRITTEN PERMISSION FROM THE CHIEF ENGINEER AND GENERAL MANAGER OF THE COUNTY SANITATION DISTRICT.

J. N. 0362.32

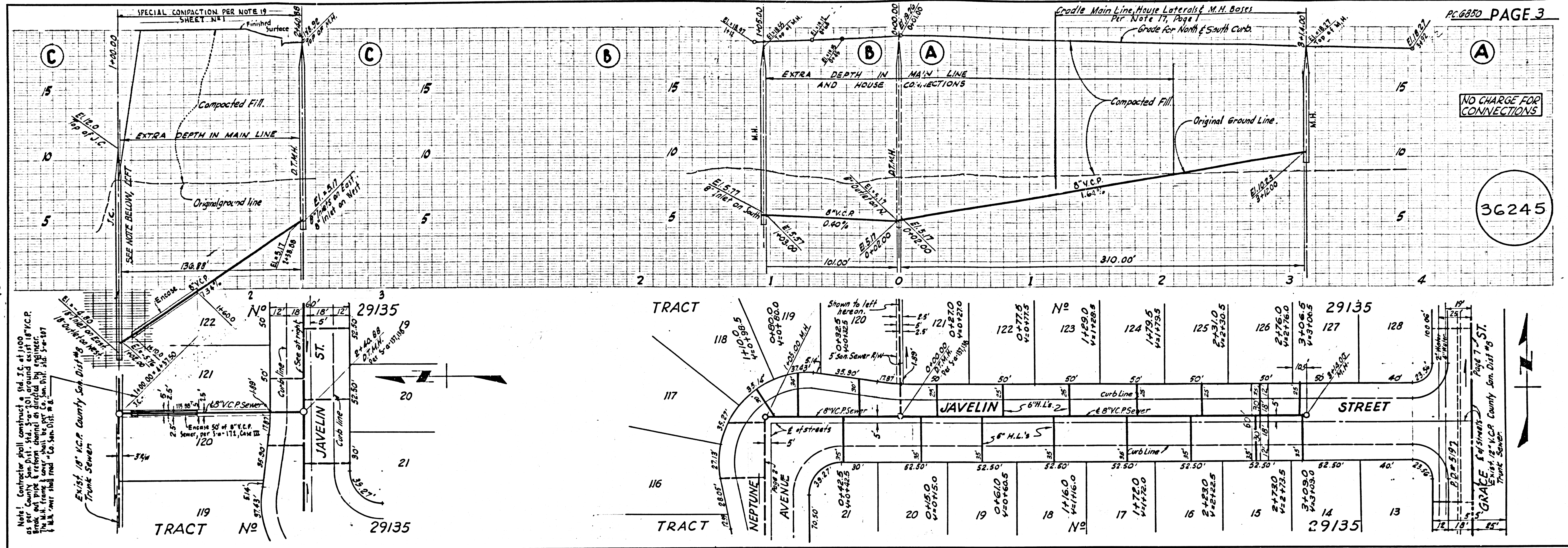


36244

NO CHARGE FOR CONNECTIONS

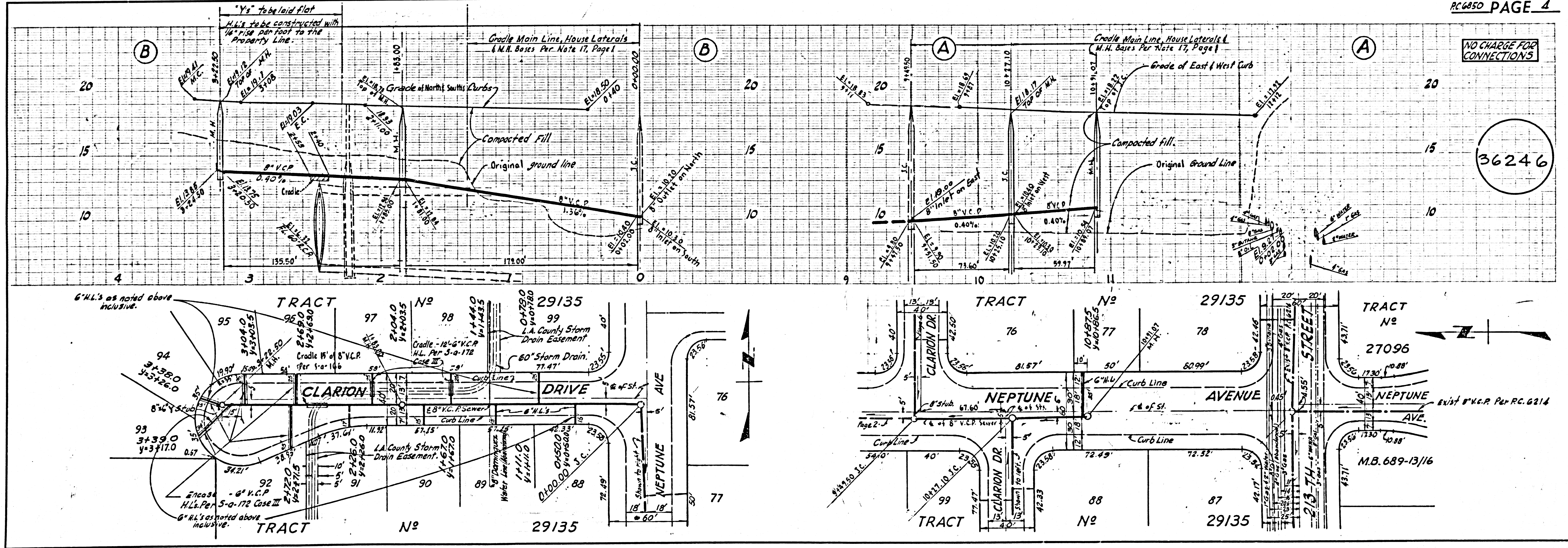
36245

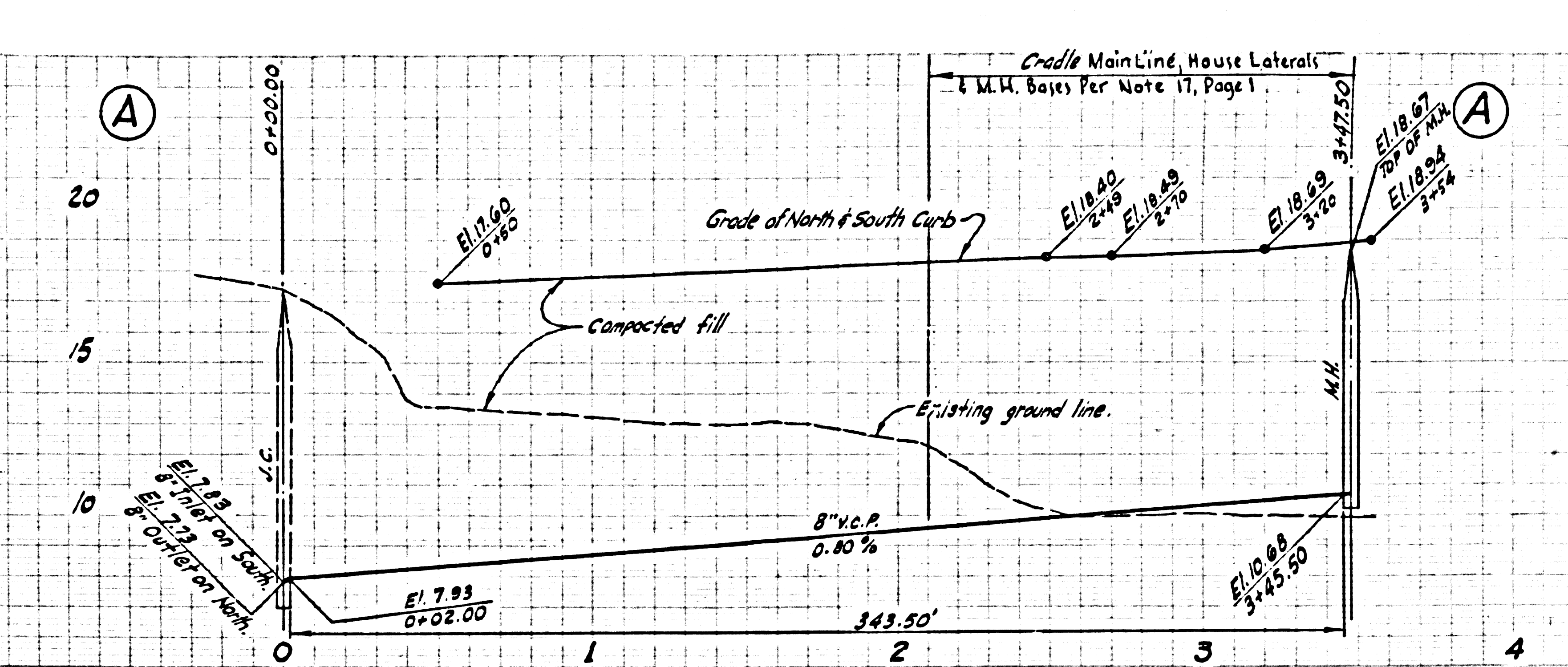
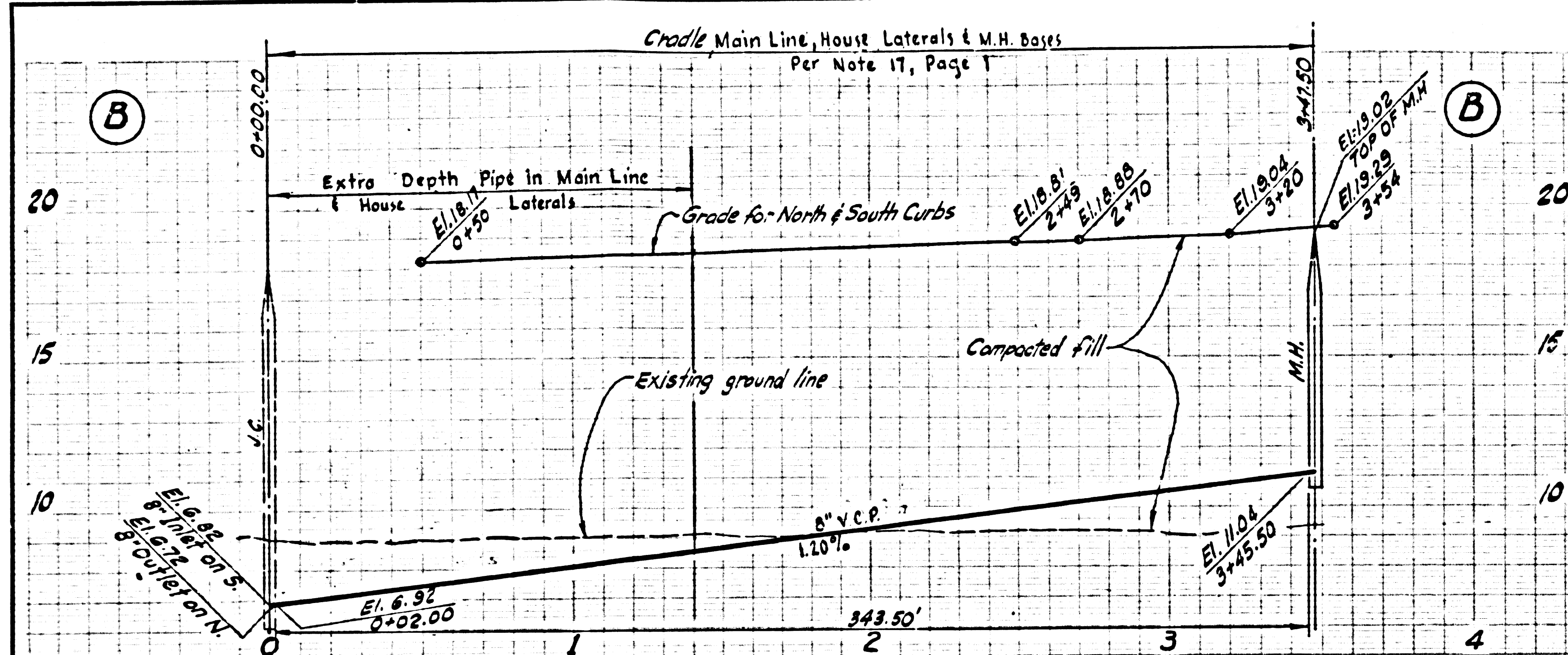
Y.C.P.



NO CHARGE FOR CONNECTIONS

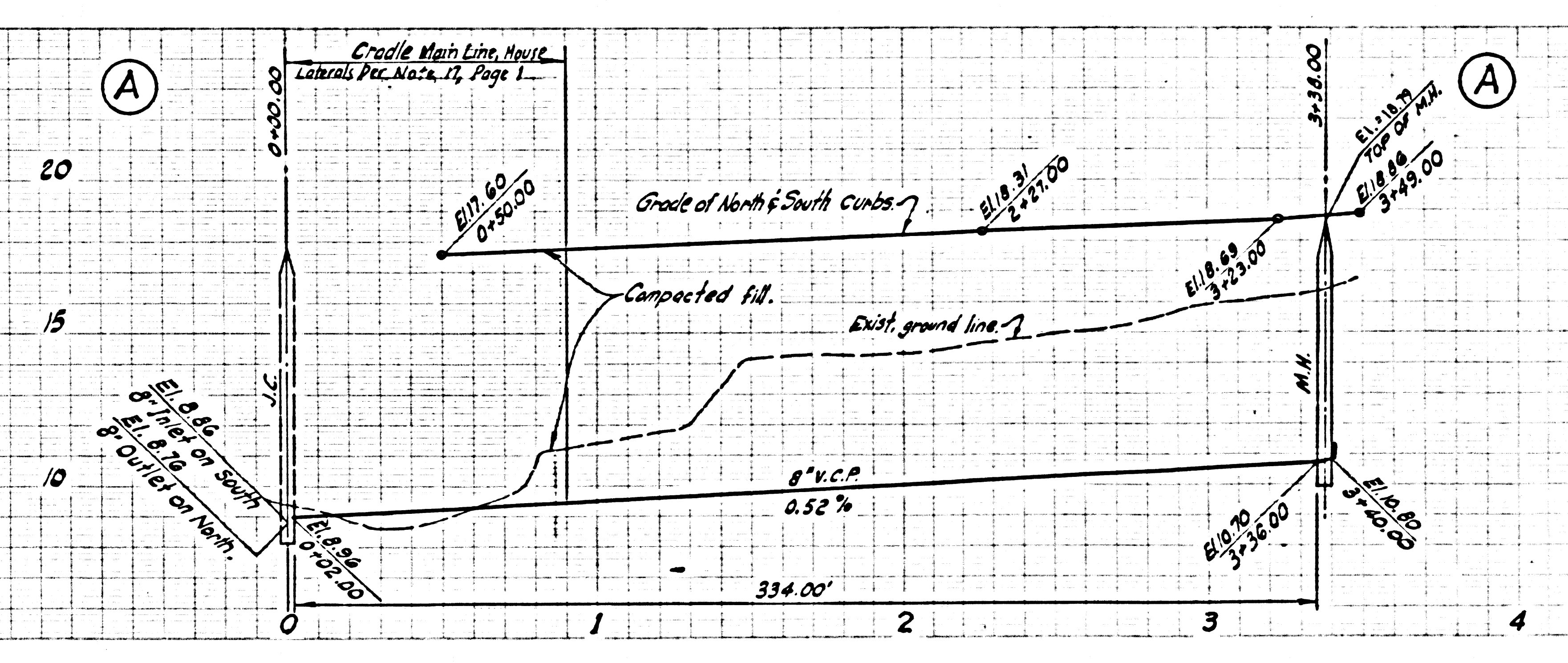
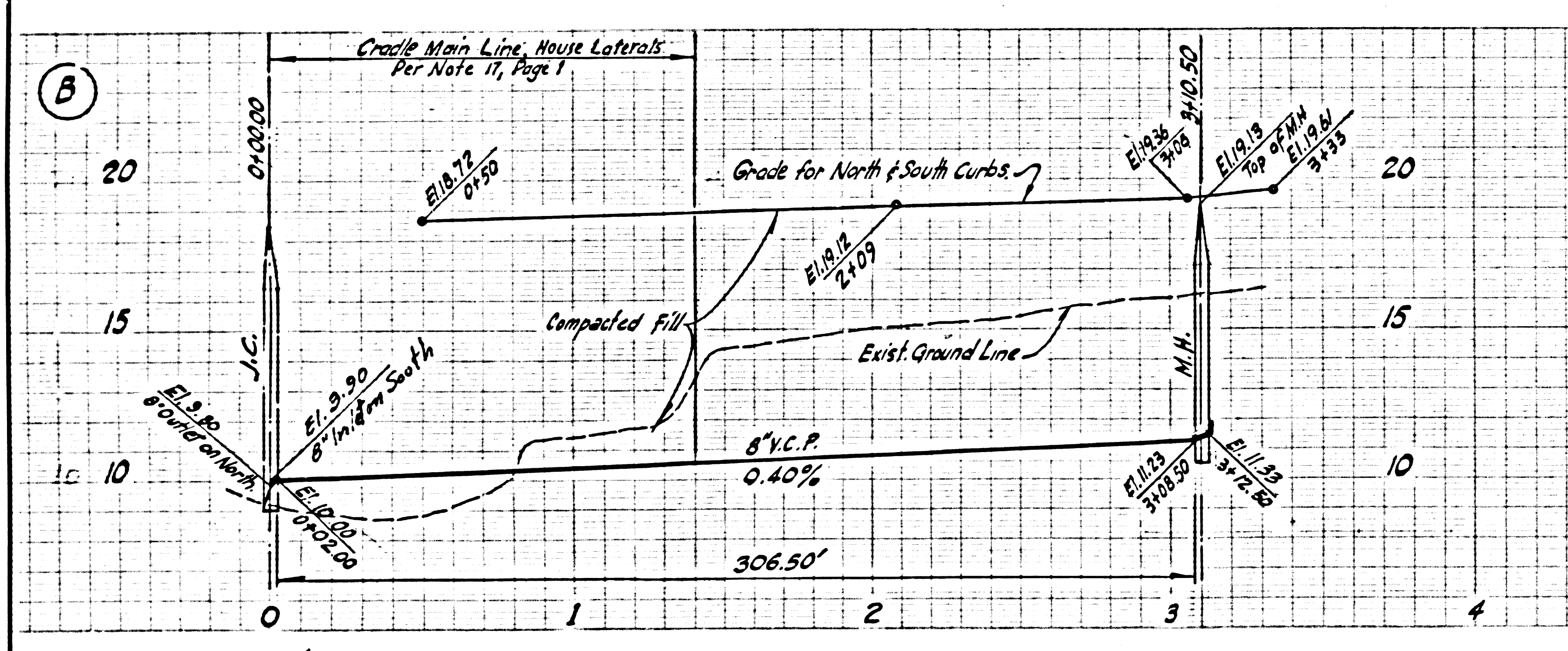
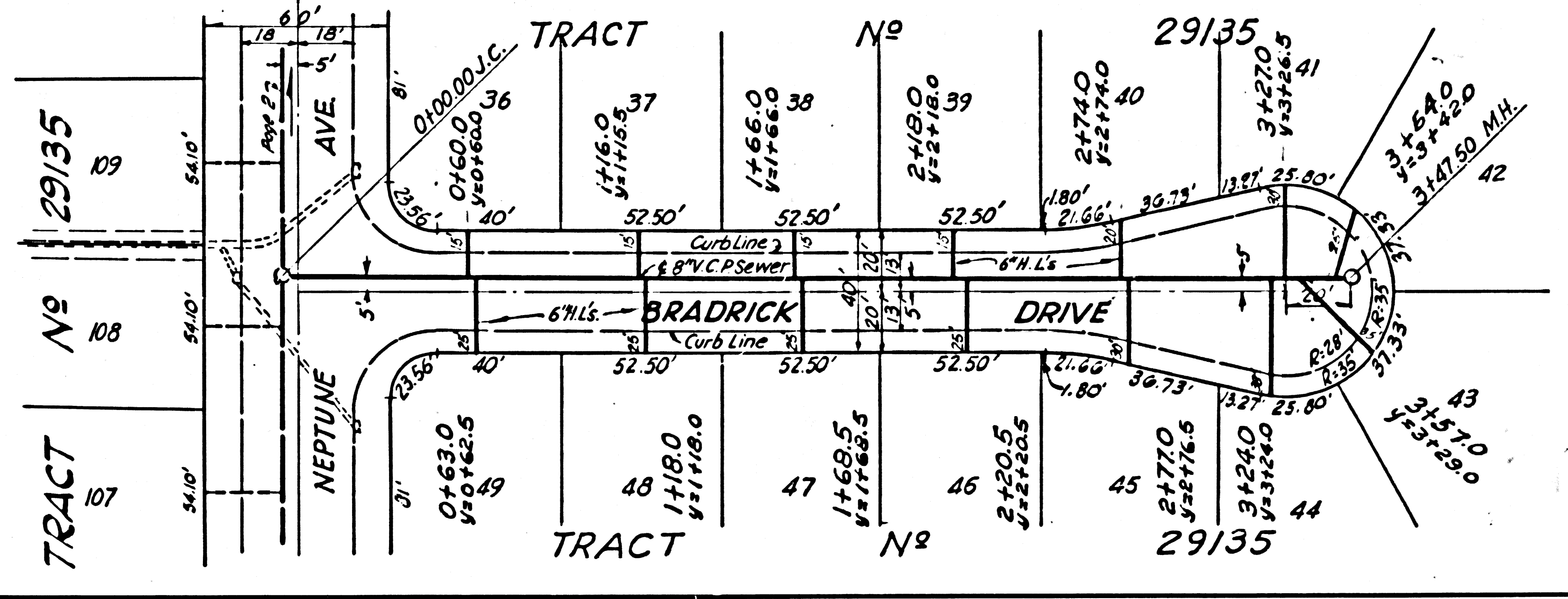
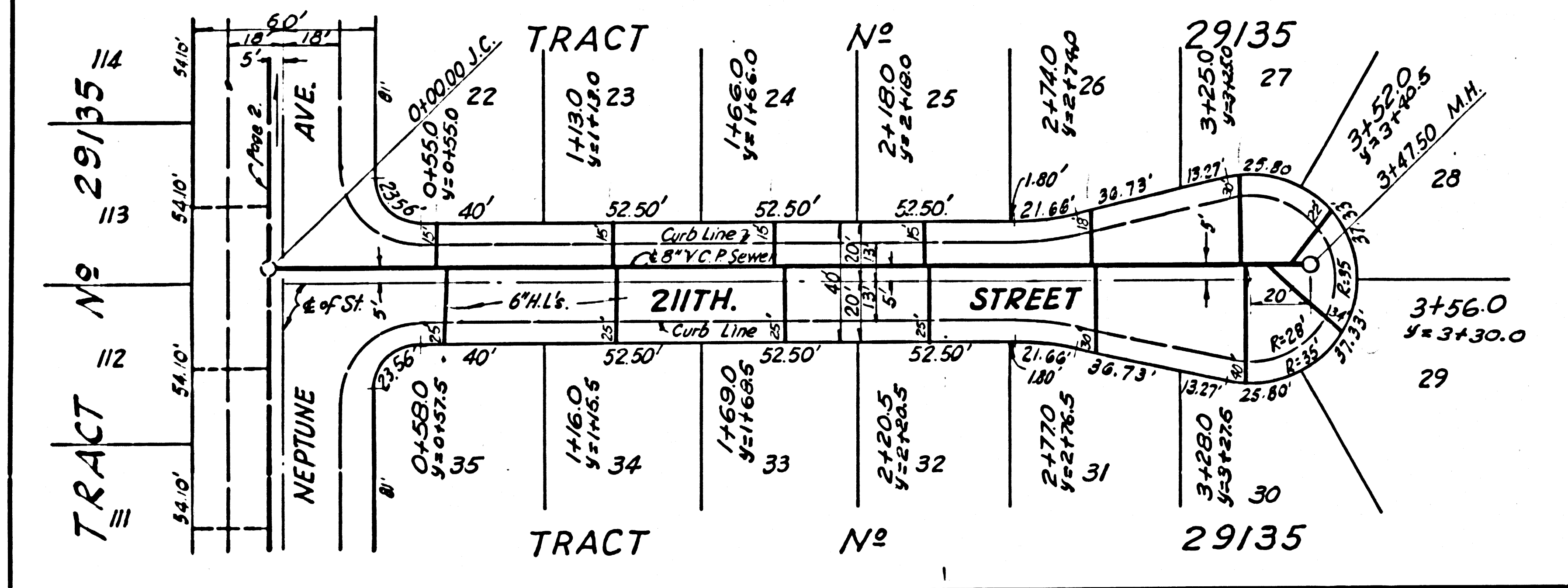
36246





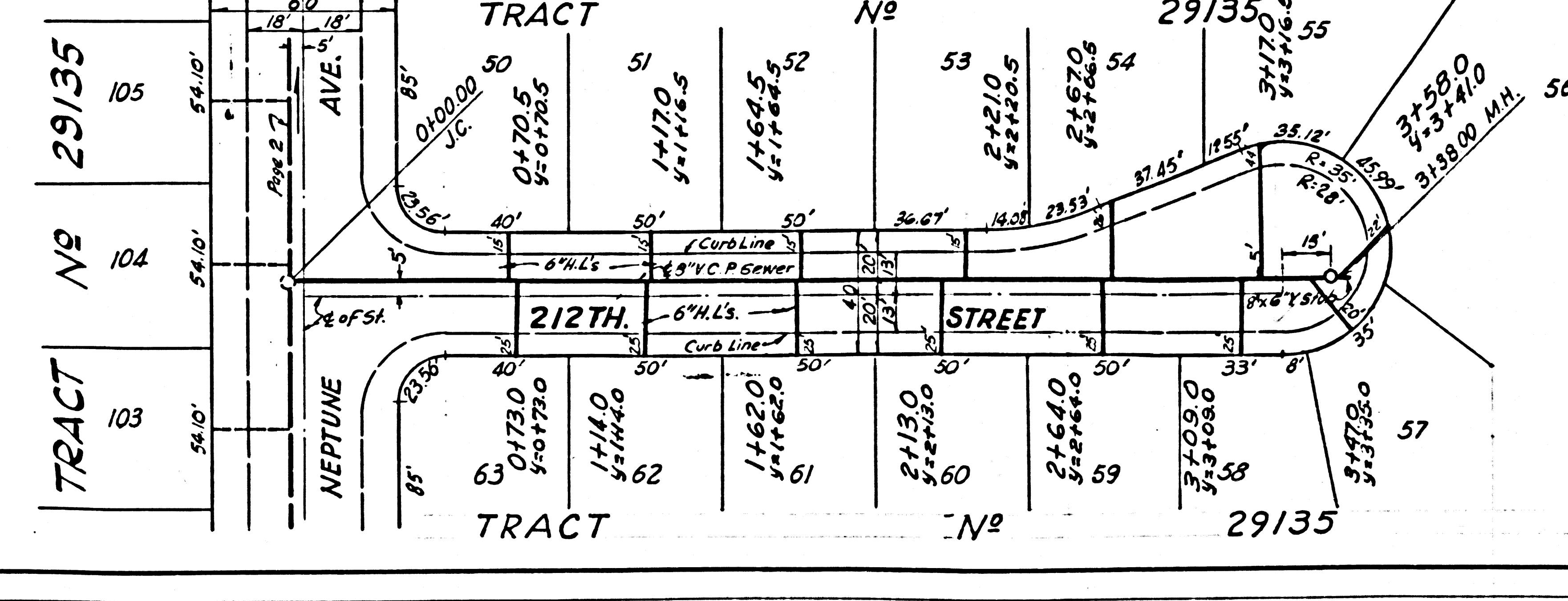
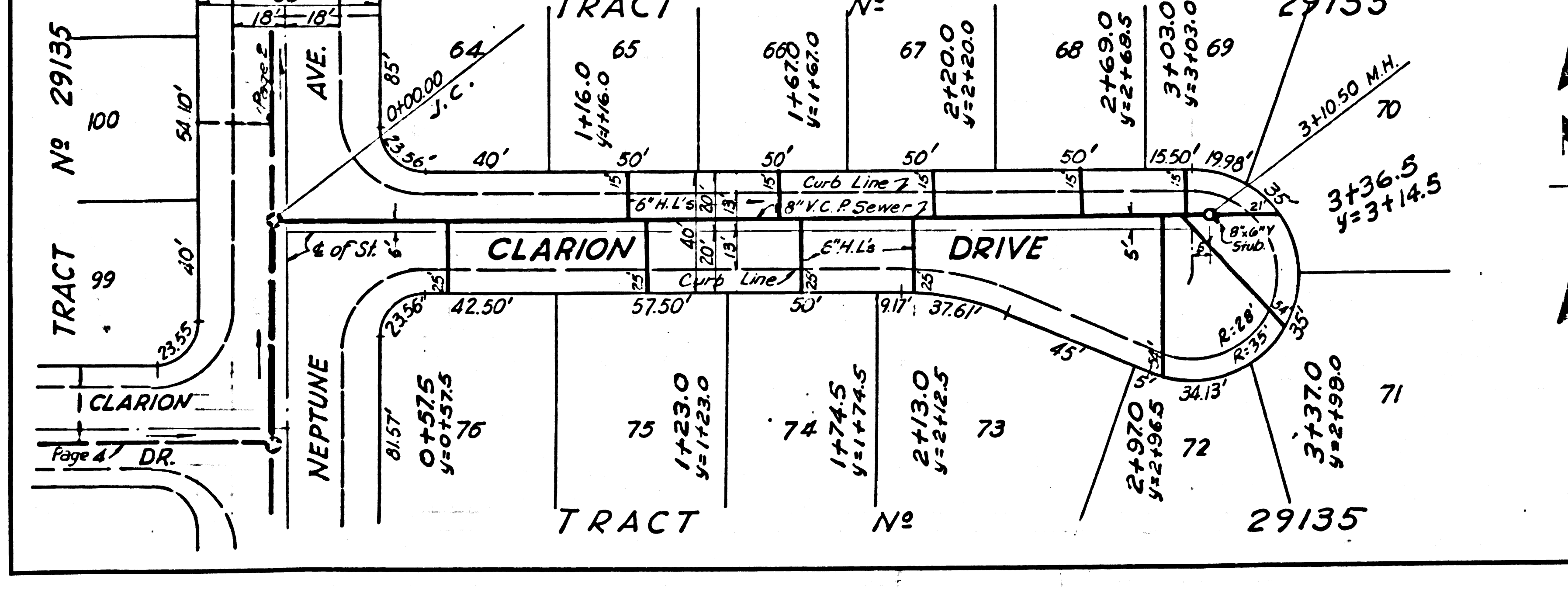
NO CHARGE FOR CONNECTIONS

36247



NO CHARGE FOR CONNECTIONS

36248



TRACT 29135 BC 6850

