

B.M. SY 3913A ELEV. 56.207
 C.S. MONUMENT IN WELL AT
 CENTERLINE INTERSECTION LOMITA
 BOULEVARD AND WALNUT STREET.
 LOMITA QUAD. 1955

LOMITA BLDG. DIST. NO. 12

TO BE CONSTRUCTED IN
 TRACT NO. 29140

PRIVATE CONTRACT NO. 6851

w.s. 28

SCALE: VERT. 1"=4'
 HORIZ. 1"=40'

JAN, 1964

PREPARED IN THE OFFICES OF
 GARDENA ENGINEERING CO.

By: *Daniel Markoff*
 REG. C. E. NO. 13787

FOR LEGEND SEE PLAN NO. S-6-64

NOTE:
 GRADES TO WHICH THIS IMPROVEMENT IS TO BE CONSTRUCTED ARE SHOWN ON PLANS AND PROFILES. GRADE POINTS FOR TOP OF CURBS, CENTER LINE OF STREETS, OR CENTER LINE OF ALLEYS ARE SHOWN BY CIRCLES ON PROFILES. AT ALL POINTS BETWEEN DESIGNATED POINTS THE GRADE SHALL BE ESTABLISHED SO AS TO CONFORM TO A STRAIGHT LINE DRAWN BETWEEN SAID DESIGNATED POINTS. ELEVATIONS ARE IN FEET ABOVE U.S.C. & G.S. SEA LEVEL DATUM OF 1929.
 THIS DRAWING AND THE DATA HEREON ARE HEREBY MADE A PART OF THE SPECIFICATIONS. WORK SHALL BE CONSTRUCTED ACCORDING TO STANDARD SPECIFICATIONS DATED MAY 22, 1952, ON FILE IN THE OFFICE OF THE COUNTY ENGINEER AND SHALL BE PROSECUTED ONLY IN THE PRESENCE OF THE COUNTY ENGINEER.
 BEFORE WORK CAN BE STARTED, THE CONTRACTOR MUST OBTAIN A PERMIT TO EXCAVATE IN COUNTY STREETS FROM THE L.A. COUNTY ROAD DEPT., DISTRICT OFFICE NO. 3, AND PAY A FEE TO THE COUNTY ENGINEER, ROOM 300, COUNTY ENGINEERING BUILDING, 100 WEST SECOND STREET OR JAMES BEARDSLEY BUILDING, REGIONAL OFFICE, SUFFICIENT TO COVER THE COST OF CONSTRUCTION INSPECTION AND RECORD PLANS.
 APPROVAL OF THIS PLAN BY THE COUNTY OF LOS ANGELES DOES NOT CONSTITUTE A REPRESENTATION AS TO THE ACCURACY OF THE LOCATION OF OR THE EXISTENCE OR NON-EXISTENCE OF ANY UNDERGROUND UTILITY PIPE, OR STRUCTURE WITHIN THE LIMITS OF THIS PROJECT. THIS NOTE APPLIES TO ALL PAGES.
 IF WORK IS TO BE DONE IN A STATE HIGHWAY, A PERMIT MUST BE OBTAINED FROM THE STATE OF CALIFORNIA, DIVISION OF HIGHWAYS, 120 SOUTH SPRING STREET, LOS ANGELES, CALIFORNIA.

COUNTY OF LOS ANGELES, CALIFORNIA
 JOHN A. LAMBIE, COUNTY ENGINEER J. D. PARKHURST, CHIEF ENGINEER

APPROVED BY: *Ralph Schapf* ASSISTANT SANITATION ENGINEER APPROVED BY: *J. D. Parkhurst* OFFICE ENGINEER

SUBMITTED BY: *Jack C. Samsing* REGIONAL ENGINEER

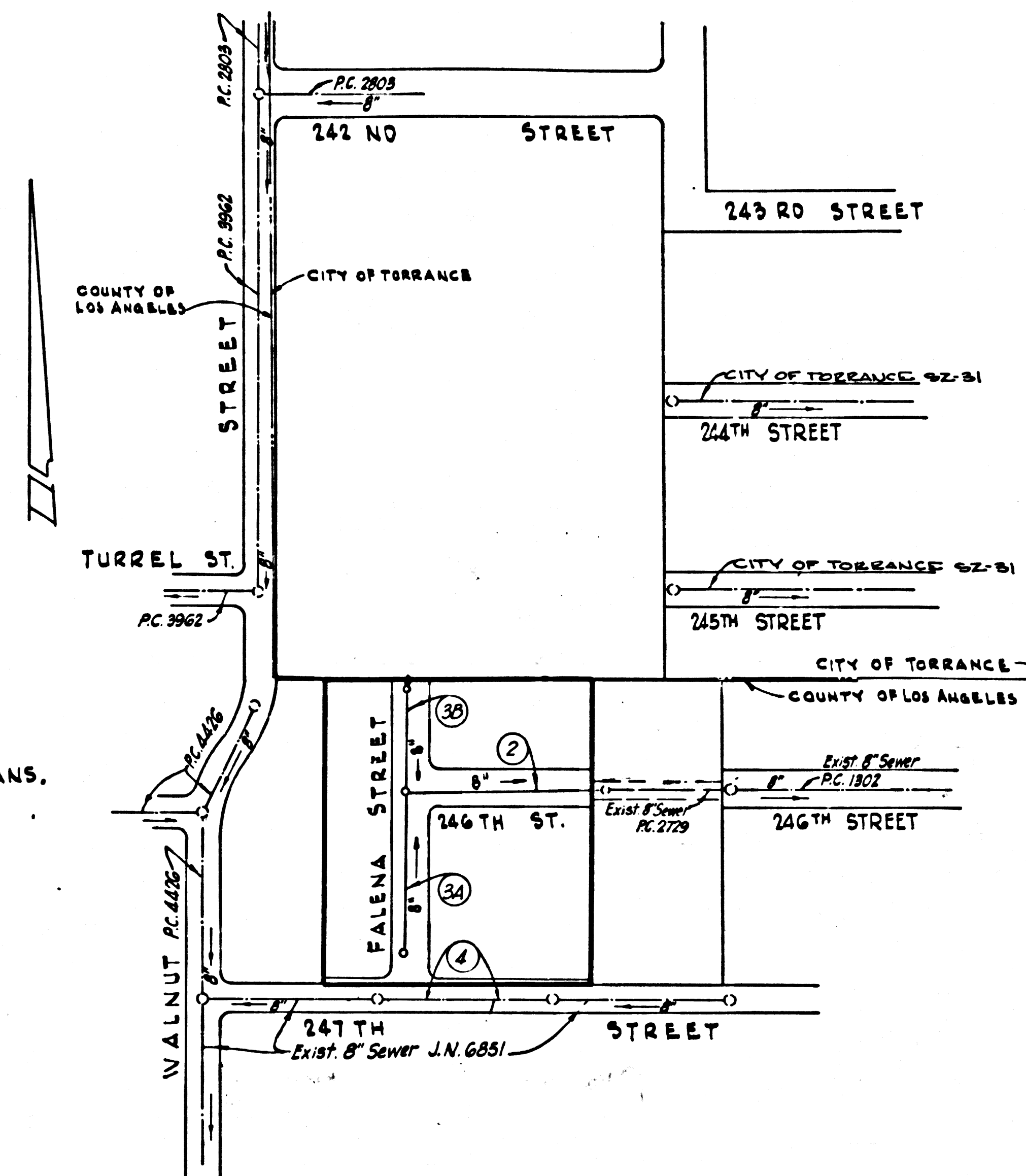
CHECKED BY: *Ralph Schapf* REG. C. E. NO. 13926

J. N. 036233

PRIVATE ENGINEER'S NOTICE TO CONTRACTORS.

THE EXISTENCE OF AND LOCATION OF ANY UNDERGROUND UTILITY PIPES OR STRUCTURES SHOWN ON THESE PLANS ARE OBTAINED BY A SEARCH OF AVAILABLE RECORDS TO THE BEST OF MY KNOWLEDGE. THERE ARE NO EXISTING UTILITIES EXCEPT AS SHOWN ON THESE PLANS. THE CONTRACTOR IS REQUIRED TO TAKE DUE PRECAUTIONARY MEASURES TO PROTECT THE UTILITY LINES SHOWN AND OR ANY OTHER LINES OF RECORD OR NOT SHOWN ON THESE PLANS.

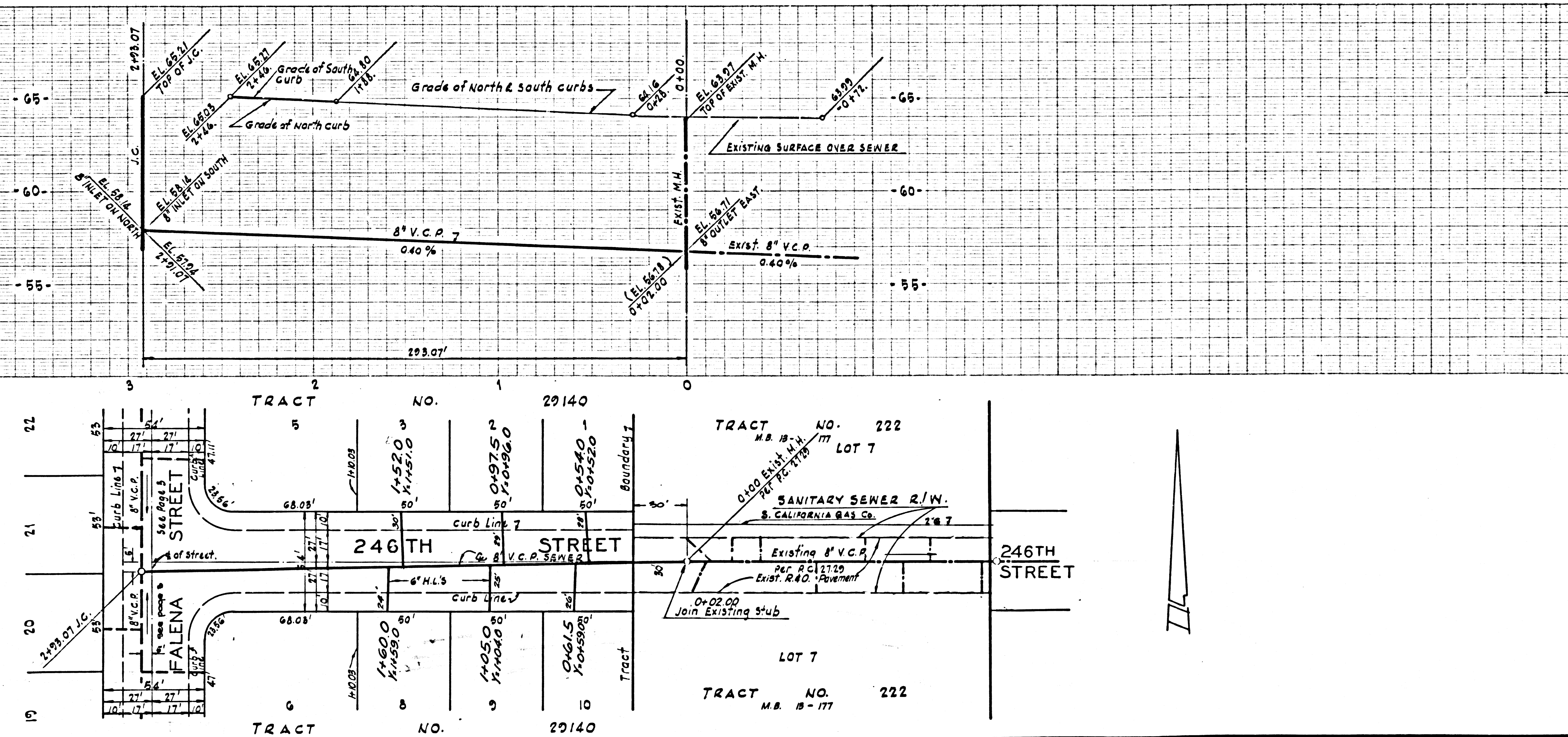
GARDENA ENGINEERING COMPANY INC.
 BY: *Daniel Markoff*
 DANIEL MARKOFF R.C.E. NO. 13781



INDEX MAP
 SCALE 1"=200'
 TRACT NO. 29140

COLLECT CHARGES
 AS INDICATED
Ralph Schapf

NO CHARGE
 FOR CONNECTIONS



34579

