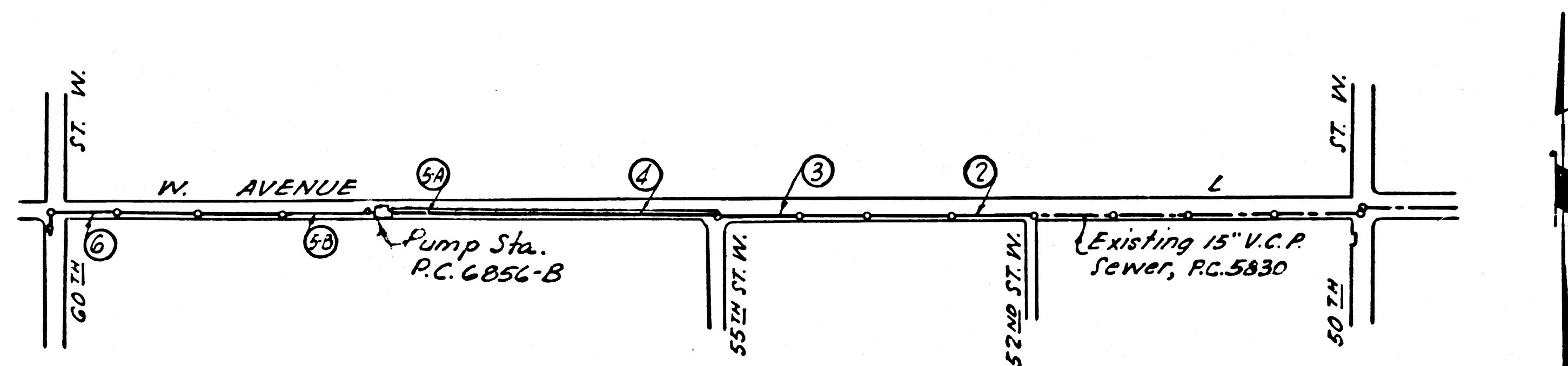
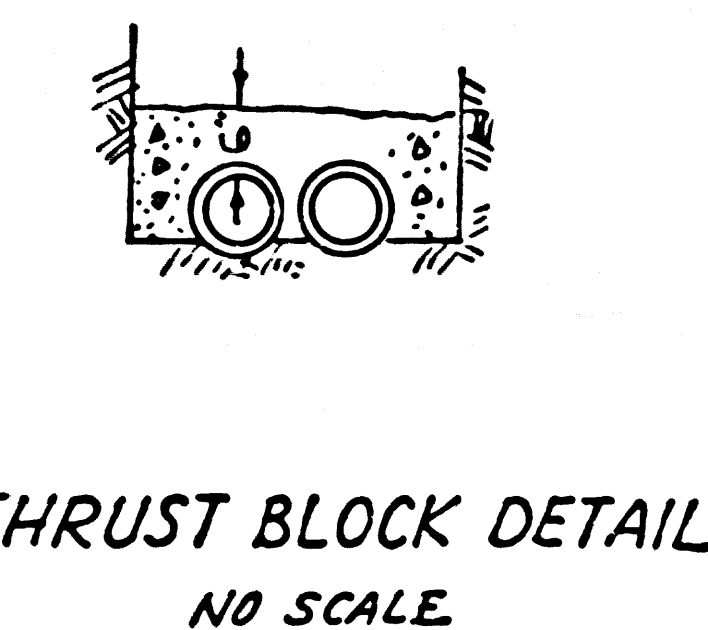
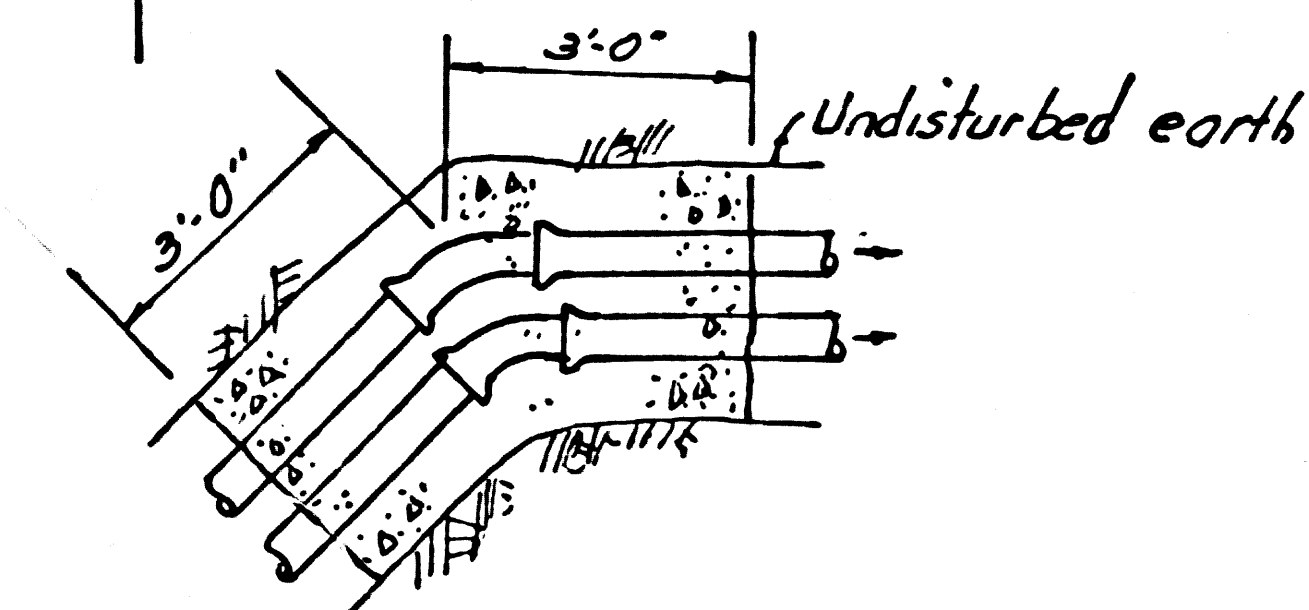


B.M. AV. 277 ELEV. 2433.083
 55' St. W & Ave. L 43' S & 58' W
 E Int. R.D. B.M. Tag set in conc.
 base to 8' chain link fr. F.B. 2142-9
 QUAD. 19



INDEX MAP
 QUARTZ HILL HIGH SCHOOL
 P.C. 6856
 Scale: 1" = 600'

Note: Figures in circles indicate page numbers

DOUBLE SCALE LANCASTER BLDG. DIST. NO. 8

PROFILE ALIGNMENT AND GRADE OF
 SANITARY SEWERS PAGE 1
 TO BE CONSTRUCTED FOR

QUARTZ HILL HIGH SCHOOL
 PRIVATE CONTRACT NO. 6856

W.S. 71
 3 SHEETS, 6 PAGES
 SCALE: VERT. 1" = 4'
 HORIZ. 1" = 40'
 December, 1963
 PREPARED IN THE OFFICES OF
 GILBERT ENGINEERING CO.
 REG. C. E. NO. 1797

37371

- NOTES:
1. PROVIDE STAKES ON THE PROPERTY LINE OR PROPERTY LINES PRODUCED AT RIGHT ANGLES TO THE SEWER LINE AT THE CENTER LINE OF EACH MANHOLE.
 2. NO REPRESENTATIVE OF THE COUNTY ENGINEER WILL SURVEY OR LAY OUT ANY PORTION OF THE WORK.
 3. THE PRIVATE ENGINEER SHALL FURNISH THE COUNTY ENGINEER WITH GRADE SHEETS AND STATIONING FOR ALL HOUSE LATERALS AND Y BRANCHES AND SHALL PROVIDE STAKES FOR THEM AT THEIR PROPER LOCATIONS WITH STATIONING PLAINLY MARKED. ALL HOUSE LATERALS SHALL BE CONSTRUCTED IN A STRAIGHT ALIGNMENT AT RIGHT ANGLES FROM THE MAIN LINE SEWER EXCEPT AS SHOWN ON THE PLANS. HOUSE LATERALS FROM CHIMNEYS SHALL NOT HAVE AN ANGLE OF LESS THAN 45° WITH THE MAIN LINE SEWER. ANY CHANGE IN ALIGNMENT SHALL BE REQUESTED IN WRITING BY THE PRIVATE ENGINEER.
 4. THE PRIVATE ENGINEER SHALL FURNISH THE HOUSE LATERAL DEPTH AT THE PROPERTY LINE BELOW THE TOP OF CURB ELEVATION FOR EACH HOUSE LATERAL ON THE GRADE SHEET.
 5. NO REVISIONS SHALL BE MADE IN THESE PLANS WITHOUT THE APPROVAL OF THE COUNTY ENGINEER.
 6. THE CONTRACTOR SHALL NOTIFY THE CONSTRUCTION DIVISION BY TELEPHONE, MADISON 9-4747, EXT. 8151, AT LEAST TWENTY-FOUR HOURS BEFORE STARTING ANY WORK UNDER THIS CONTRACT.
 7. MANHOLES SHALL BE BRICK SEWER STRUCTURES PER S-3 PRECAST CONCRETE MANHOLES PER S-5 OR S-6 MAY BE USED AS AN ALTERNATE IN LOCATIONS APPROVED BY THE COUNTY ENGINEER.
 8. USE STANDARD MANHOLE FRAMES AND COVERS, S EXCEPT AS NOTED.
 9. MANHOLE TOPS IN UNIMPROVED RIGHTS-OF-WAY TO BE SIX INCHES ABOVE FINISHED GRADE.
 10. USE EXTRA STRENGTH PIPE, ALL PIPE IS STANDARD DEPTH EXCEPT AS NOTED.
 11. USE REMOVED-HOOD-OR-MECHANICAL COMPRESSION JOINTS FOR ALL V.C.P. JOINTS PER SPECS., SECS. 34 & 46, 48.
 12. WHERE OVER-GROUND WATER IS DISCOVERED DURING THE CONSTRUCTION OF THE SEWERS, THE V.C.P. JOINTS SHALL BE OF JOINT-COMPOUND PER SPECS., SECS. 33 & 48, OR MECHANICAL COMPRESSION JOINTS PER SPECS., SEC. 36.
 13. IF A POWER POLE IS WITHIN THREE FEET OF THE SEWER, THE SEWER SHALL BE ENCASED, PER S-23 TWO FEET ON EITHER SIDE FROM THE POINT OF INTERFERENCE.
 14. IF DURING THE COURSE OF CONSTRUCTION IT IS DETERMINED THAT THERE IS LESS THAN FOUR FEET OF COVER OVER THE TOP OF A MAIN LINE OR HOUSE LATERAL V.C.P. SEWER WHICH IS NOT INDICATED ON THE PLANS, THE PIPE SHALL BE ENCASED PER S-23 UNLESS OTHERWISE APPROVED BY THE COUNTY ENGINEER.
 15. HOUSE LATERALS TO BE CONSTRUCTED WITH INVERTS AT PROPERTY LINE... FEET BELOW CURB GRADE EXCEPT AS NOTED.
 16. RESURFACE ALL TRENCHES WITHIN PAVED AREAS TO MEET L.A. COUNTY ROAD DEPT. OR CALIFORNIA STATE HIGHWAY REQUIREMENTS IN ACCORDANCE WITH PERMITS.
 17. P.O. ALLOWABLE LEAKAGE TEST USE FORMULA NO. 2, SPECS., SEC. 54.
 18. ALL STATE AND LOCAL TRENCH SAFETY ORDERS WILL BE RIGIDLY ENFORCED.

Revision July 9, 1965
 1. Change profile to conform to new B.M.
 Revision approved [Signature] 7-12-65
 Office of the County Engineer

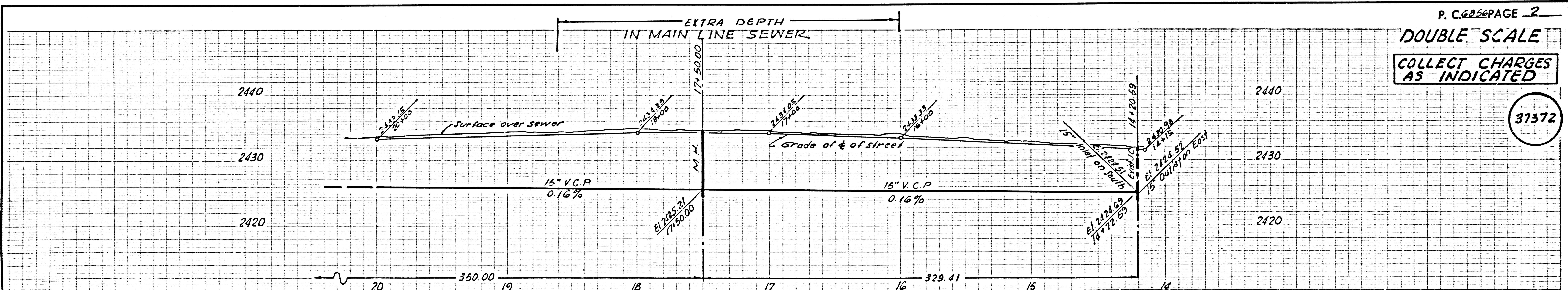
COLLECT CHARGES AS INDICATED
 [Signature]

NO CONNECTIONS FOR THE DISPOSAL OF INDUSTRIAL WASTES SHALL BE MADE TO SEWERS SHOWN ON THESE DRAWINGS WITHOUT WRITTEN PERMISSION FROM THE CHIEF ENGINEER AND GENERAL MANAGER OF THE COUNTY SANITATION DISTRICT.

NOTE:
 GRADES TO WHICH THIS IMPROVEMENT IS TO BE CONSTRUCTED ARE SHOWN ON PLANS AND PROFILES. GRADE POINTS FOR TOP OF CURBS, CENTER LINE OF STREETS, OR CENTER LINE OF ALLEYS ARE SHOWN BY CIRCLES ON PROFILES. AT ALL POINTS BETWEEN DESIGNATED POINTS THE GRADE SHALL BE ESTABLISHED SO AS TO CONFORM TO A STRAIGHT LINE DRAWN BETWEEN SAID DESIGNATED POINTS. ELEVATIONS ARE IN FEET ABOVE U.S.C. & G.S. SEA LEVEL DATUM OF 1929.
 THIS DRAWING AND THE DATA HEREON ARE HEREBY MADE A PART OF THE SPECIFICATIONS.
 WORK SHALL BE CONSTRUCTED ACCORDING TO STANDARD SPECIFICATIONS DATED 1-27-62, ON FILE IN THE OFFICE OF THE COUNTY ENGINEER AND SHALL BE PROSECUTED ONLY IN THE PRESENCE OF THE COUNTY ENGINEER.
 BEFORE WORK CAN BE STARTED, THE CONTRACTOR MUST OBTAIN A PERMIT TO EXCAVATE IN COUNTY STREETS FROM THE L.A. COUNTY ROAD DEPT., DISTRICT OFFICE NO. 2, AND PAY A FEE TO THE COUNTY ENGINEER, ROOM 300, COUNTY ENGINEERING BUILDING, 108 WEST SECOND STREET OR...
 CONSTRUCTION INSPECTION AND RECORD PLANS.
 APPROVAL OF THIS PLAN BY THE COUNTY OF LOS ANGELES DOES NOT CONSTITUTE A REPRESENTATION AS TO THE ACCURACY OF THE LOCATION OF OR THE EXISTENCE OR NON-EXISTENCE OF ANY UNDERGROUND UTILITY PIPE, OR STRUCTURE WITHIN THE LIMITS OF THE PROJECT. THIS NOTE APPLIES TO ALL PAGES.
 IF WORK IS TO BE DONE IN A STATE HIGHWAY, A PERMIT MUST BE OBTAINED FROM THE STATE OF CALIFORNIA, DIVISION OF HIGHWAYS, 120 SOUTH SPRING STREET, LOS ANGELES, CALIFORNIA.

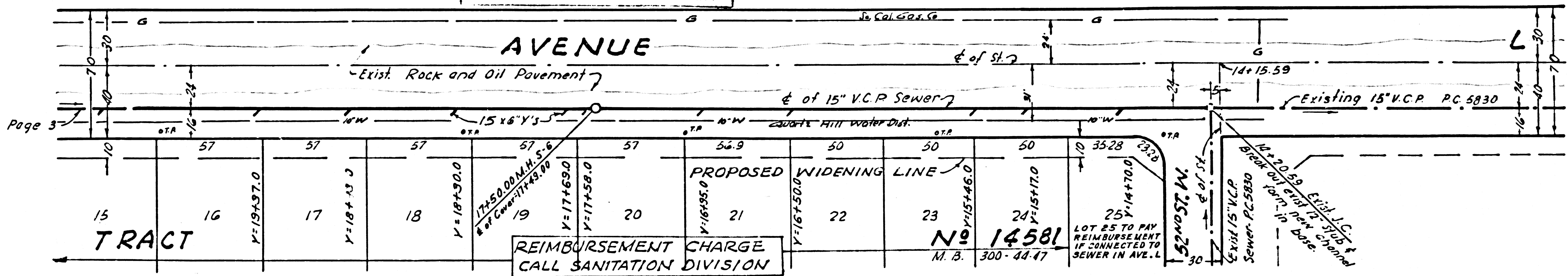
COUNTY OF LOS ANGELES, CALIFORNIA
 JOHN A. LAMBIE, COUNTY ENGINEER J. D. PARKHURST, CHIEF ENGINEER
 CO. SAN. DIST. NO. 14
 APPROVED BY [Signature] APPROVED BY [Signature]
 ASSISTANT SANITATION ENGINEER OFFICE ENGINEER
 SUBMITTED BY [Signature] REGIONAL ENGINEER
 CHECKED BY [Signature] REG. C.E. NO. 6980

J. N. 236237



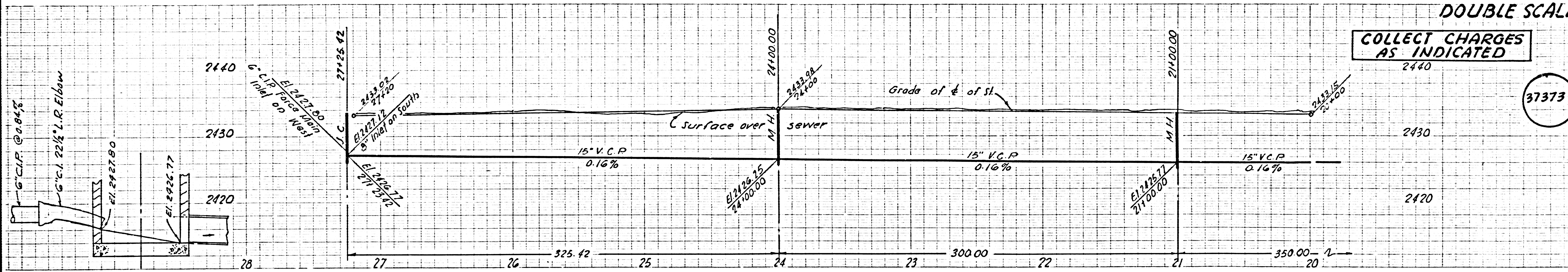
ISSUE NO PERMITS - MUST BE DOUBLE LINED

NO CONNECTIONS ALLOWED UNTIL PROPERTY HAS PAID THE REIMBURSEMENT FEE TO COUNTY SANITATION DISTRICT NO. 14



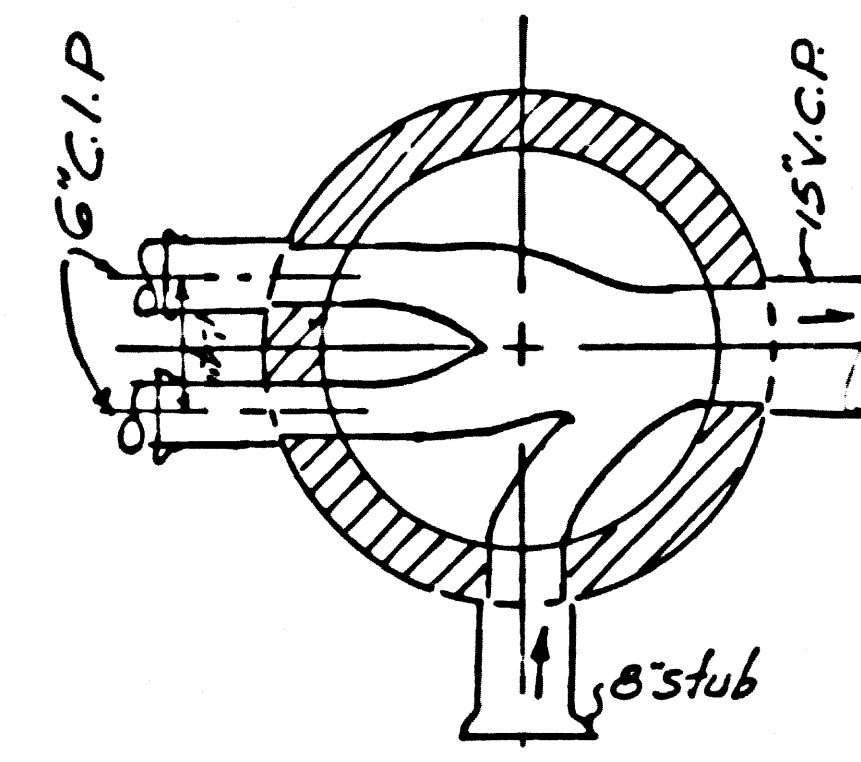
COLLECT CHARGES
AS INDICATED

37373

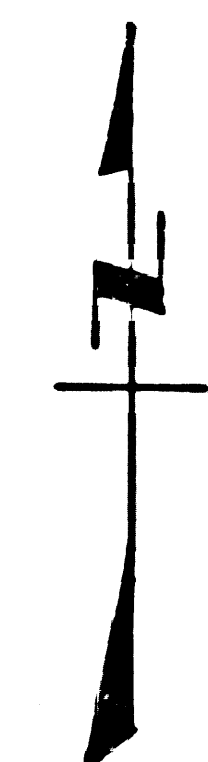
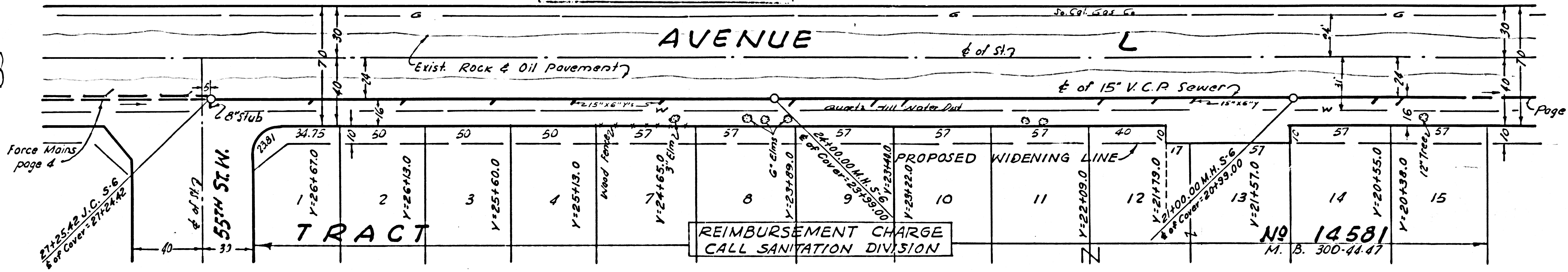


ISSUE NO PERMITS - MUST BE DOUBLE LINED

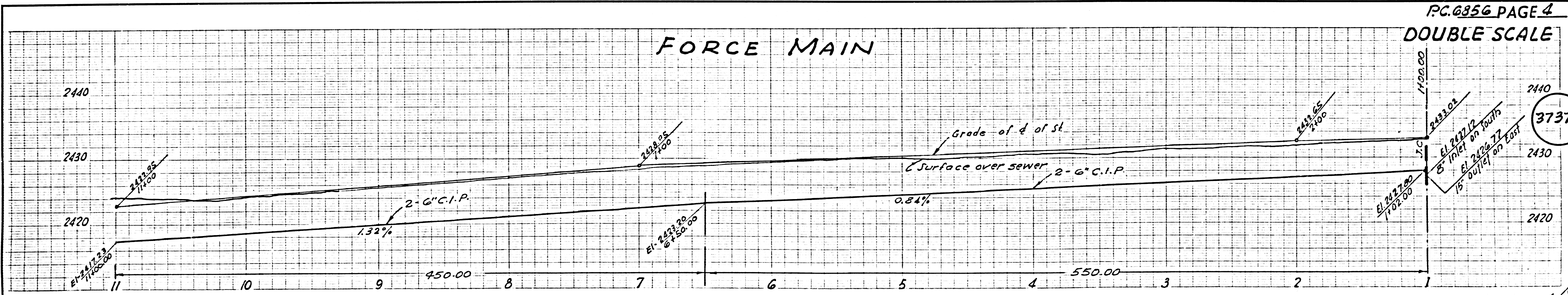
NO CONNECTIONS ALLOWED UNTIL PROPERTY HAS PAID THE ANNEXATION FEE TO COUNTY SANITATION DISTRICT NO. 14



J.C. DETAIL @ 27+25.42
NO SCALE



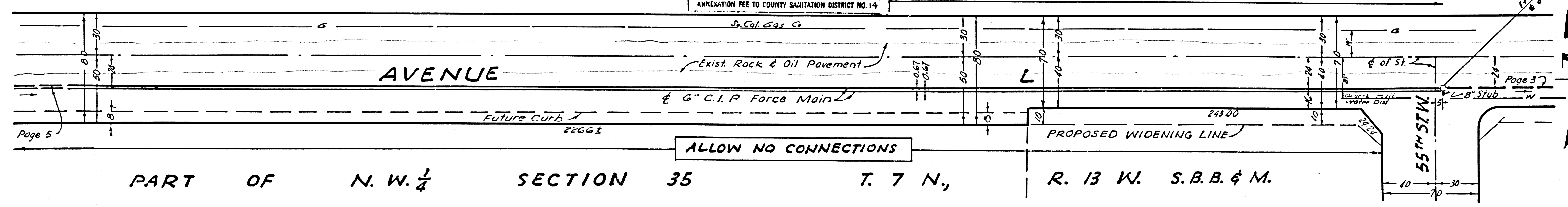
37374



ALLOW NO CONNECTIONS

NO CONNECTIONS ALLOWED UNTIL PROPERTY HAS PAID THE ANNEXATION FEE TO COUNTY SANITATION DISTRICT NO. 14

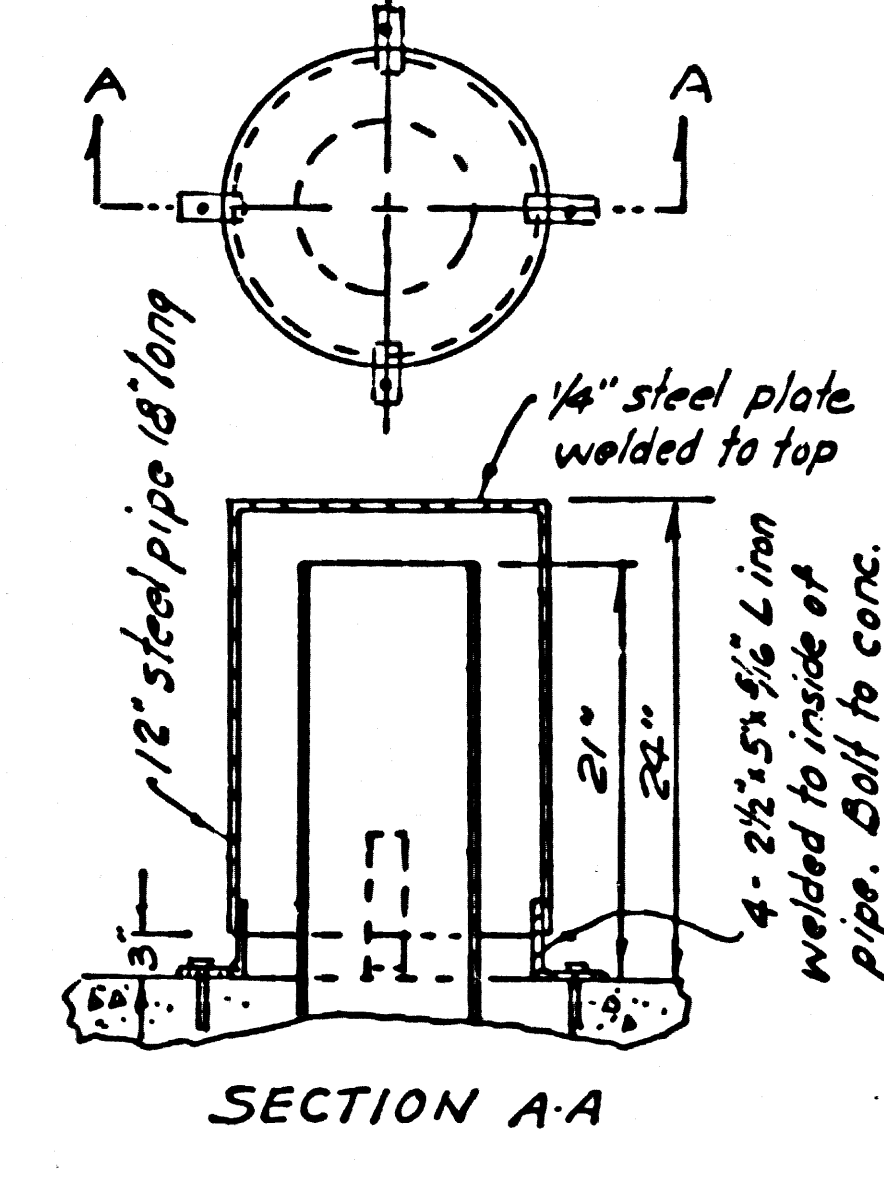
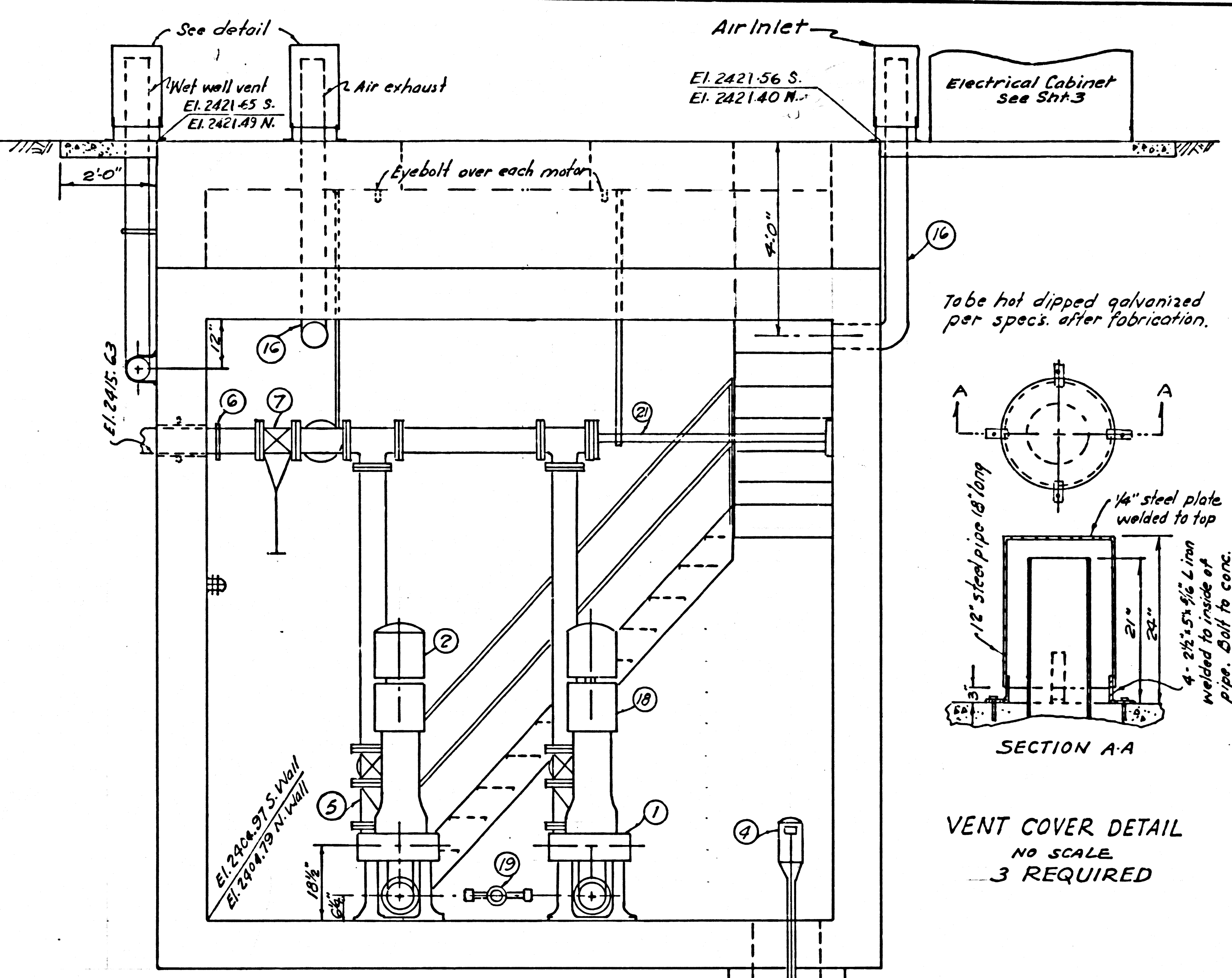
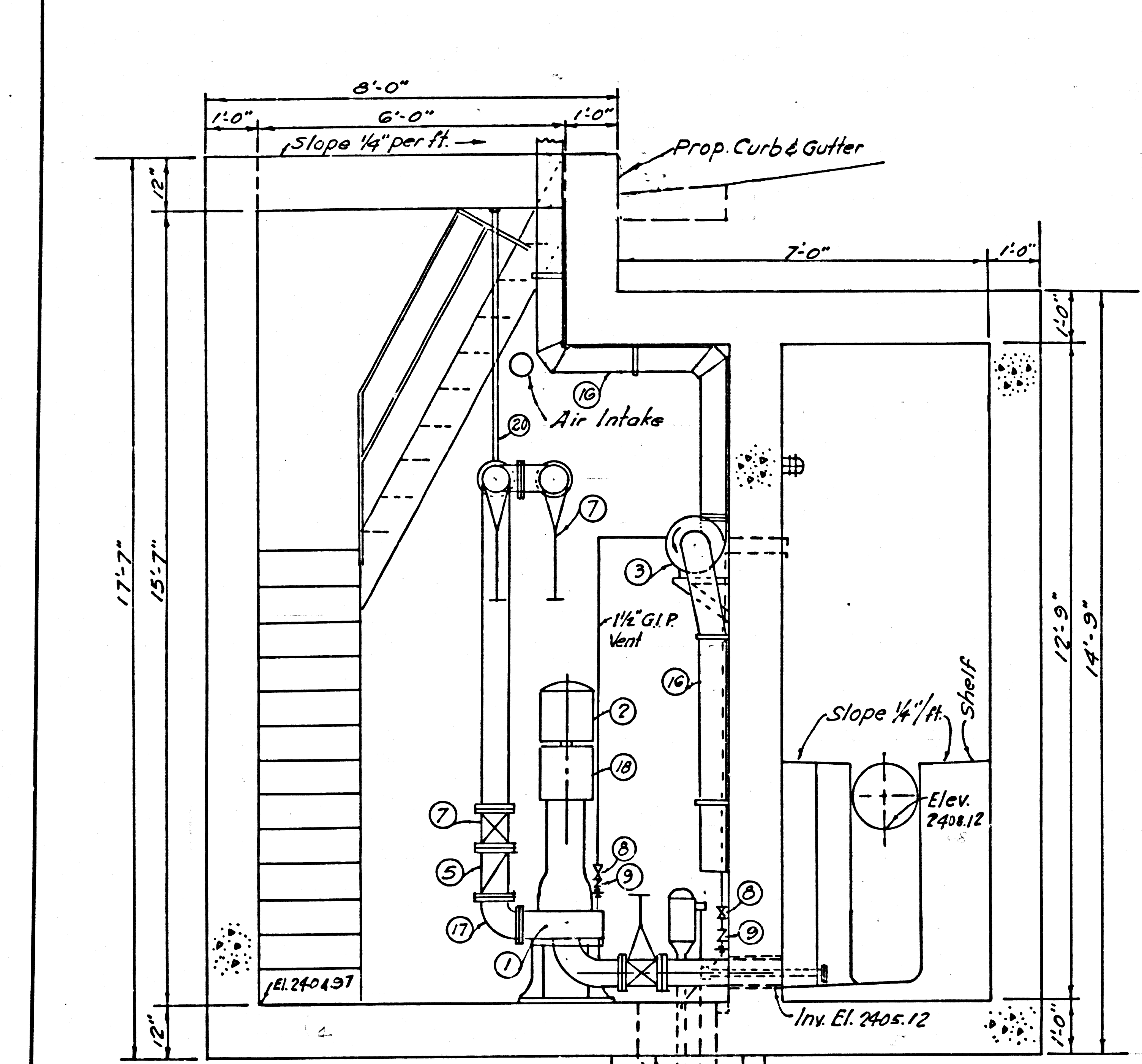
ALLOW NO CONNECTIONS



PART OF N. W. 1/4 SECTION 35 T. 7 N., R. 13 W. S. B. B. & M.

MATERIAL LIST

ITEM	QUAN	DESCRIPTION
1	2	Wemco Torque Flow Model E.V.P. 6"x6" pump operating at 1750 rpm and capable of delivering 550 gpm each at 45 TDH
2	2	15 HP, 1750 rpm, 220 volt, 3 φ, 60 cycle, drip proof motors, connected to pump by coupling
3	2	1/2 HP, 1725 rpm, 110 volt, 1 φ, 60 cycle, Buffalo Forge Co. Size "C" Blower
4	1	Yeoman's Drain Dri D-2, Model Y Sump Pump, 1/2 HP, 1750 rpm, 220 volt, 3 φ, 60 cycle, vapor proof, or equal
5	2	6" Swing check valve, iron body, brass trimmed, Crane No 373 or equal with O.L. & W.
6	4	6" Dresser coupling with neoprene gaskets
7	7	6" double disc flanged, brass trimmed gate valve Crane No 2885 or equal
8	2	1 1/2" gate valve, Crane No 440 or equal
9	2	1 1/2" Swing check valve, brass disc, Crane No 34 or equal
10		1 1/2" galv. iron pipe & fittings
11	2	150 W. vapor proof light fixture with guard
12	5	6"x6"x6" flanged double sweep tee
13		1/2" Galv. chain, snap fasteners on each end for Maintenance Door lockdown
14	1	Explosion proof light fixture, 150 W.
15	3	6" Galv. iron pipe for air intake & exhaust Various lengths as shown
16	2	6"-90° C.I. elbow
17	2	Model 1083-VP Dynamic Vari-Draulic Vertical package unit variable speed coupling or equal
18	1	Liquid level control system consisting of 2 L-918 Minneapolis-Honeywell proportioning Pressuretrols, Corksdate D17433 switch, pressure gauge all mounted on a 2" pipe manifold
19	2	3/4" adj. swing hanger flange with pipe clamps, bolt to conc.
20	1	2" Galv. iron pipe thrust rod with mounts

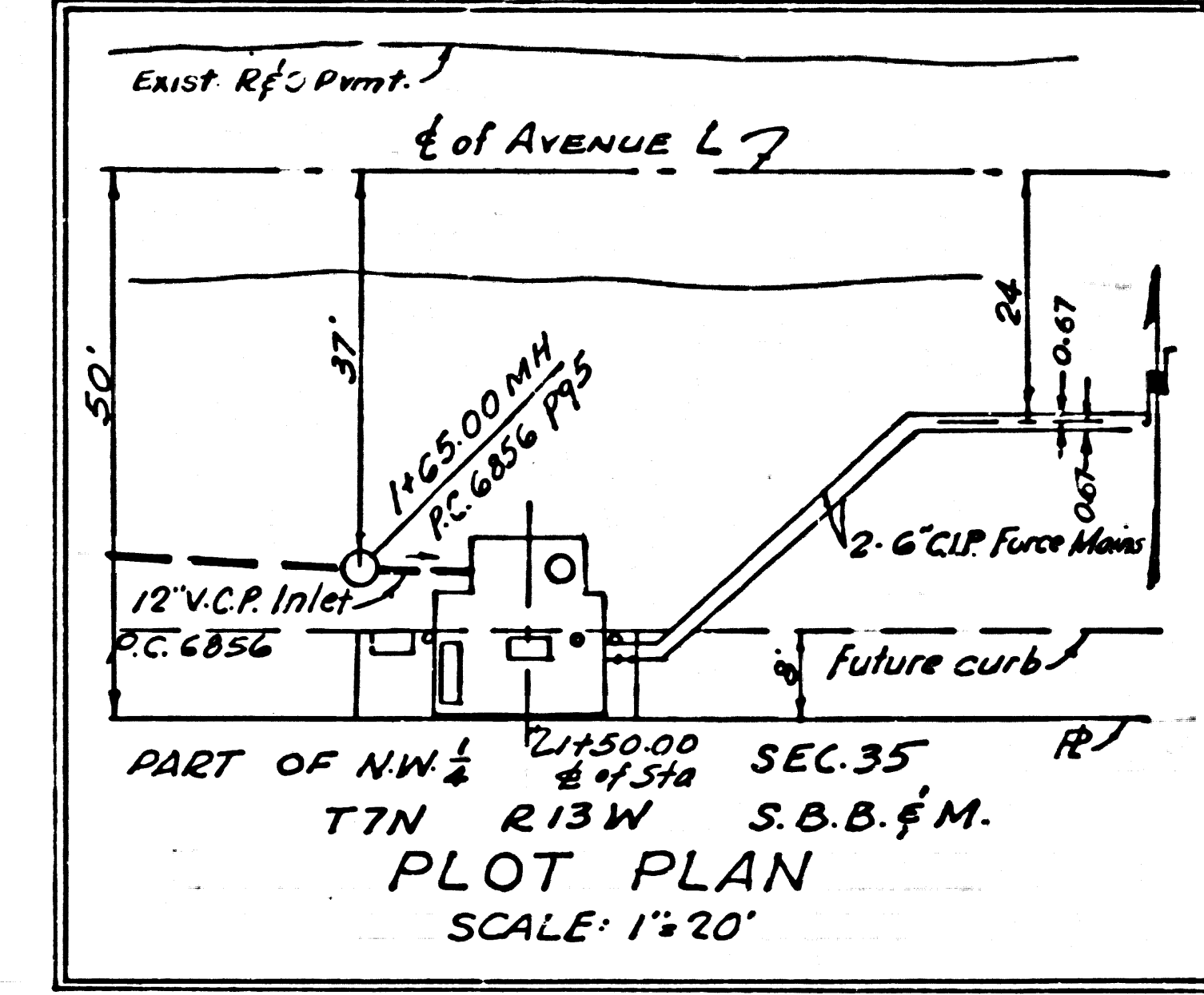


VENT COVER DETAIL
NO SCALE
3 REQUIRED

SECTION A-A
SCALE: 1/2" = 1'-0"

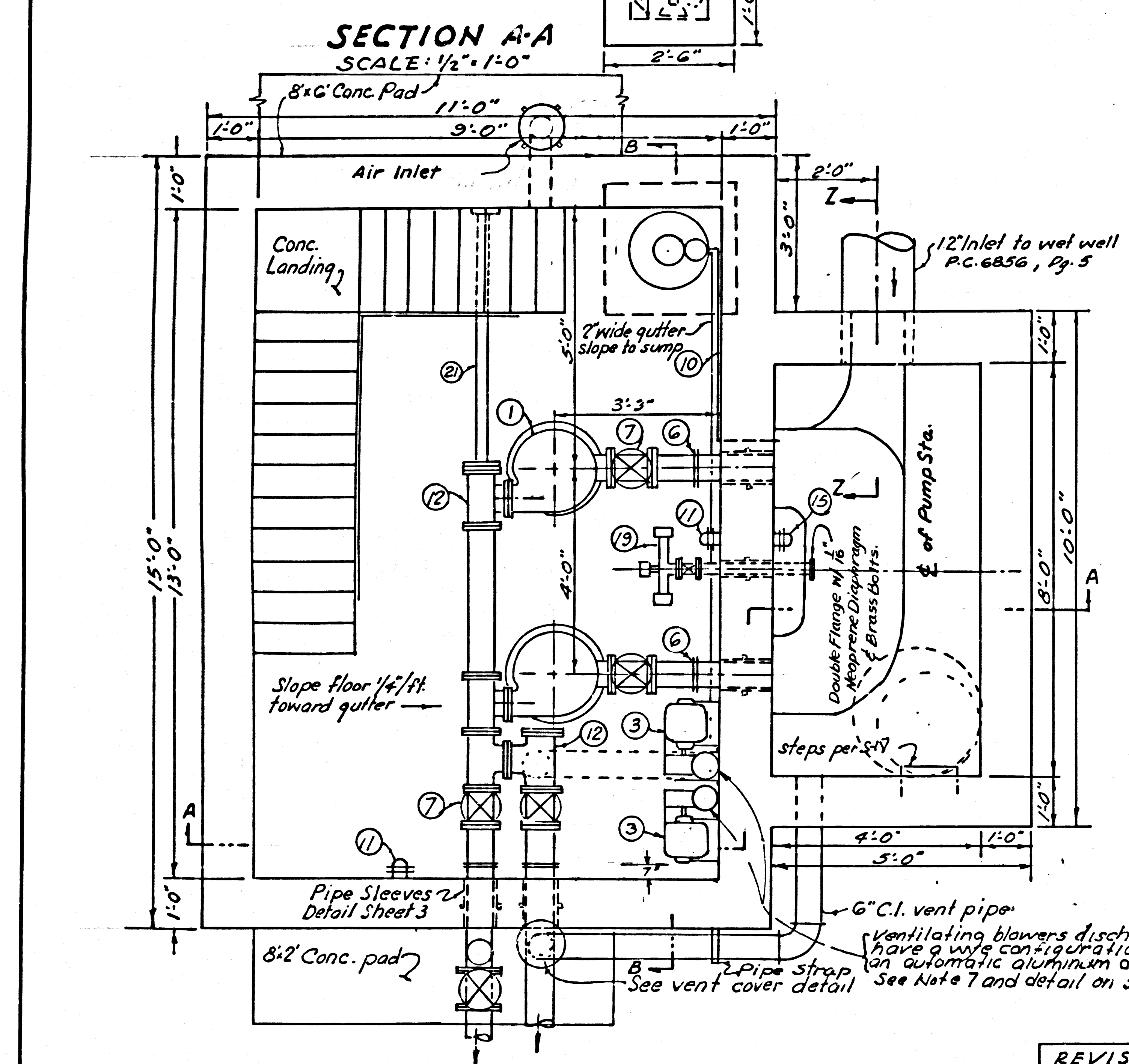
SECTION B-B
SCALE: 1/2" = 1'-0"

SECTION Z-Z
NO SCALE



WET WELL M.H. DETAIL
SCALE: 1/2" = 1'-0"

STANDPIPE DETAIL
SCALE: 1/2" = 1'-0"



PLAN VIEW
SCALE: 1/2" = 1'-0"

STANDPIPE DETAIL
SCALE: 1/2" = 1'-0"

REVISION Feb 14 1966
2. Modify ventilating system for continuous operation.
Electrical permit Required. See Note under Permits.
Revision approved [Signature] Office of County Eng.

REVISION July 9, 1965
1. Change elevations to conform to new B.M.
Revision approved [Signature] Office of County Engineer

APPROVED JOHN D. PARKHURST
CHIEF ENGINEER
CO. SAN. DIST. NO. 14
BY [Signature] OFFICE ENGINEER

- GENERAL NOTES
1. Ultimate strength of concrete (28 days) 3000 psi min.
 2. Use intermediate grade reinforcing bars, 20000 psi.
 3. A waterproof membrane or coating shall be applied to the outside of pump station. The membrane or coating shall extend to 6" below top of slab.
 4. All pipes shall be fastened securely to walls with galv. iron pipe straps.
 5. Electric conduits shall be underground from power pole to pump station.
 6. Rubber water stops, Gales Rubber Co. size 6"x3/8" or approved equal, shall be placed at all construction joints.
 7. Blower alternator to be "Intermatic True-Trol" Series V-23000, Col. No. T-3112 with "Cyro" set of on-off dials, and with 12 hour timer in metal enclosure. This is to comply with requirements for automatic alternation for ventilating blower.

- PERMITS
- The Contractor or Owner shall obtain the following permits & pay the appropriate fees before beginning construction. The permits shall be obtained in the order listed below.
1. ROAD PERMIT - Road Dept 38126 Sierra Hwy, Palmdale.
 2. PLUMBING PERMIT - 108 W. 29th St Los Angeles.
 3. ELECTRICAL PERMIT - 2nd Floor, Public Counter.
 4. CONSTRUCTION PERMIT - Sanitation Division, 108 W. 29th St Los Angeles, Room 303.

PREPARED IN THE OFFICE OF
GILBERT ENGINEERING CO.

PRIVATE CONTRACT NO. G85C-B

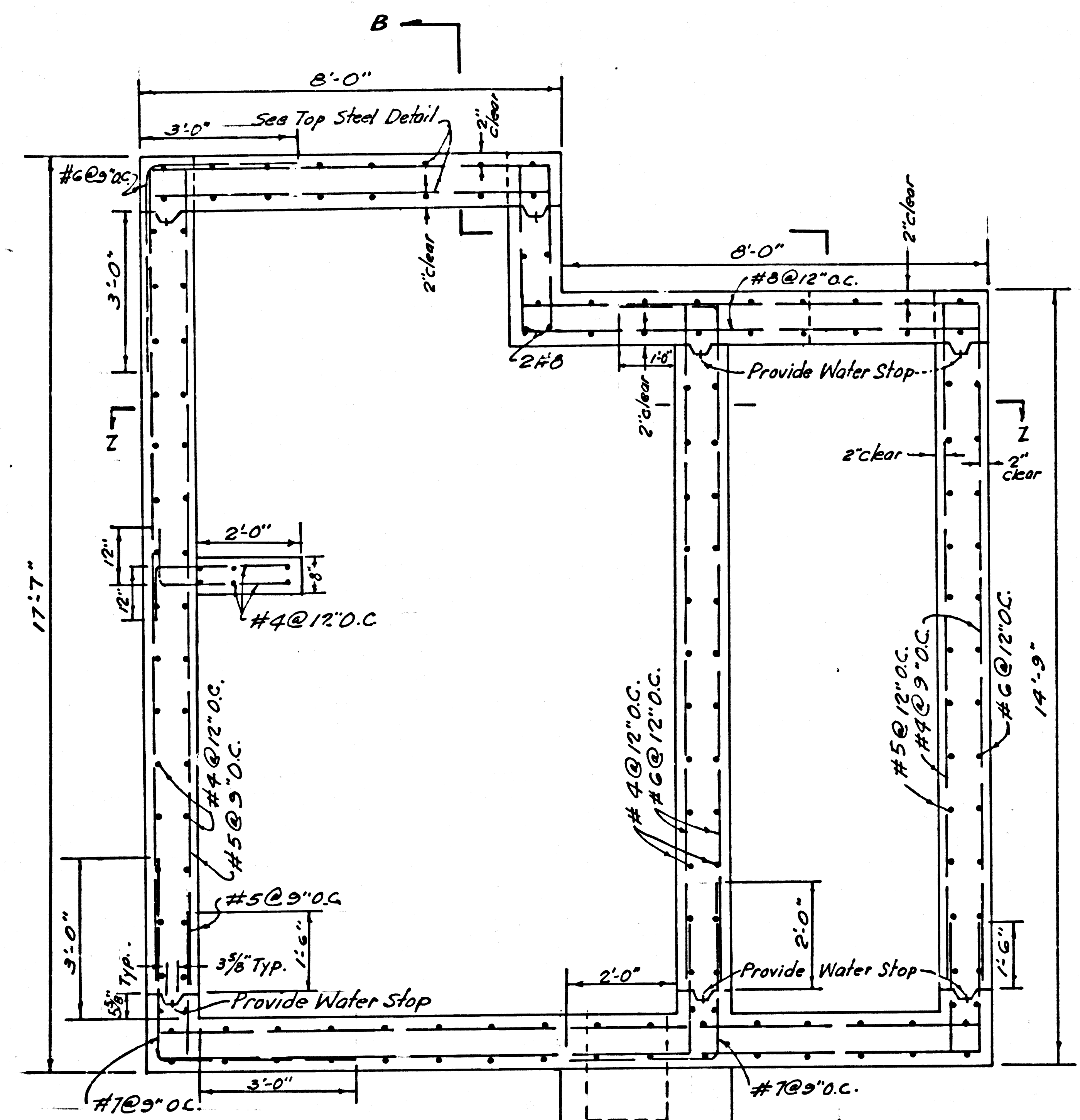
SEWAGE LIFT STATION TO SERVE
QUARTZ HILL HIGH SCHOOL
COUNTY OF LOS ANGELES, CALIFORNIA
APPROVED JOHN A. LAMBIE
COUNTY ENGINEER

APPROVED BY [Signature]
ASSISTANT SANITATION DIVISION ENGINEER

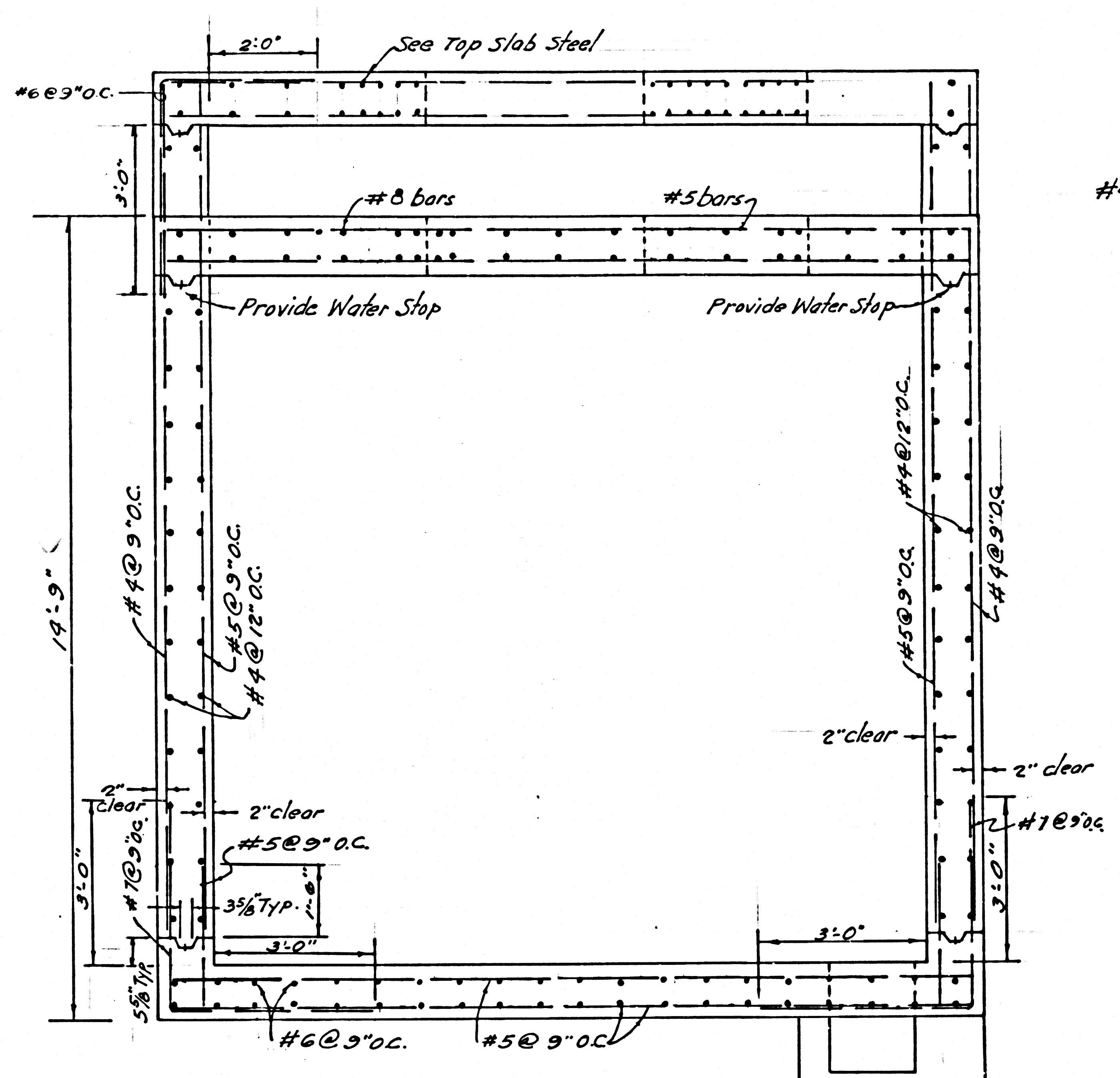
CHECKED BY [Signature] RCE 14390

REVIEWED BY [Signature] SEWER MAINT. SUPT.
MAR. 1965 SCALE: AS SHOWN SHEET 1 OF 3

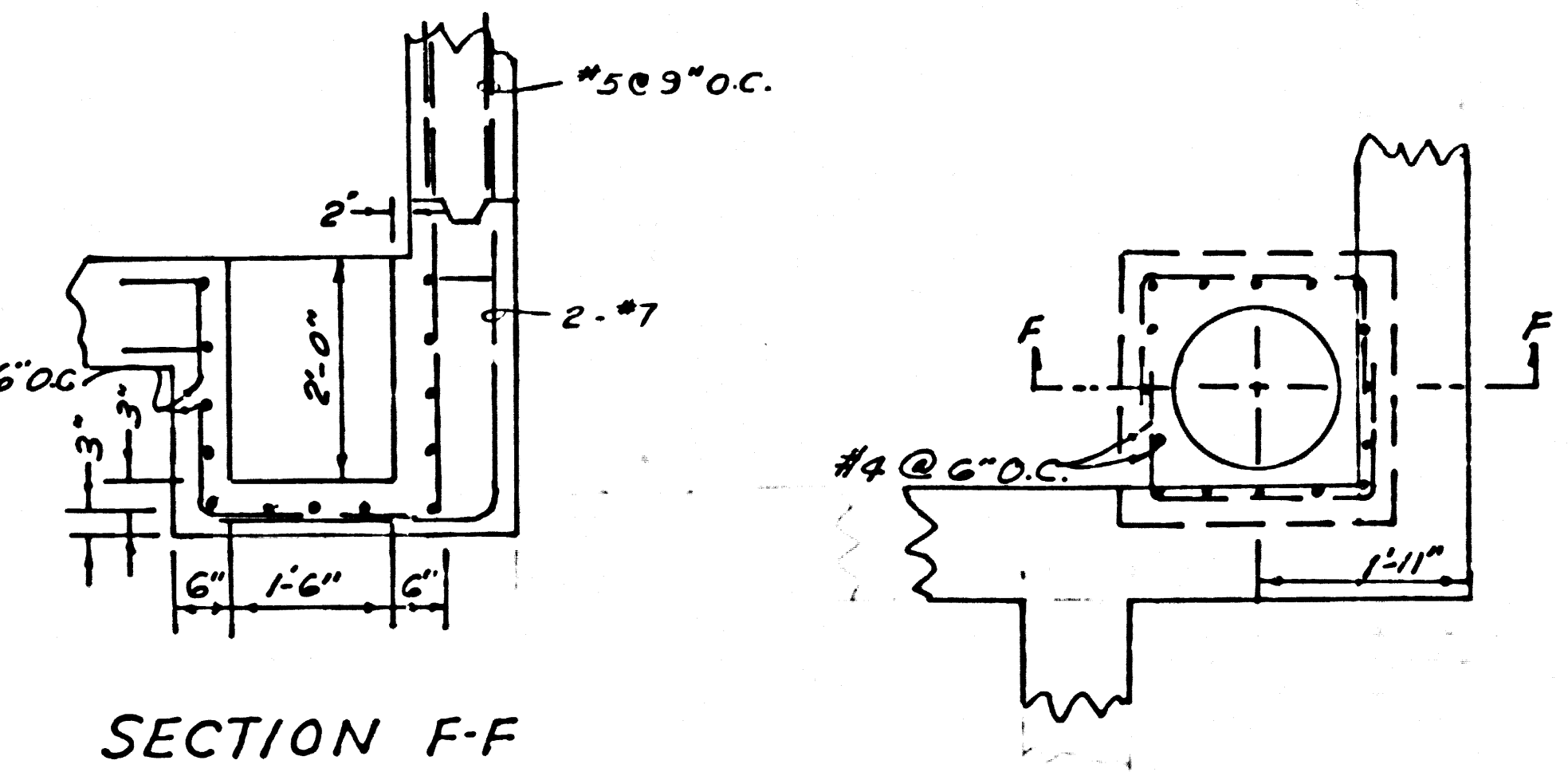
PROPERTY OF THE COUNTY OF LOS ANGELES



SECTION A-A

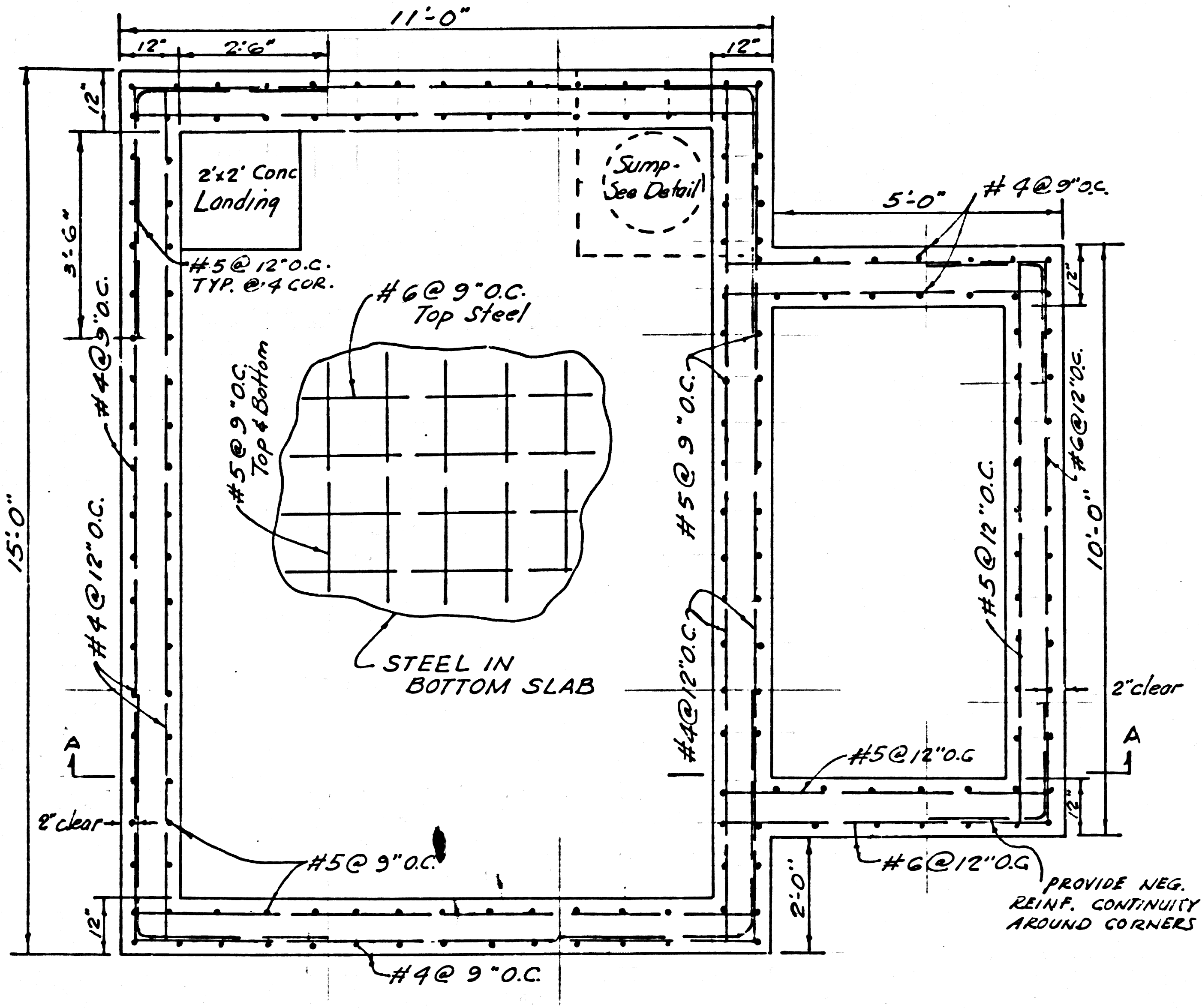


SECTION B-B

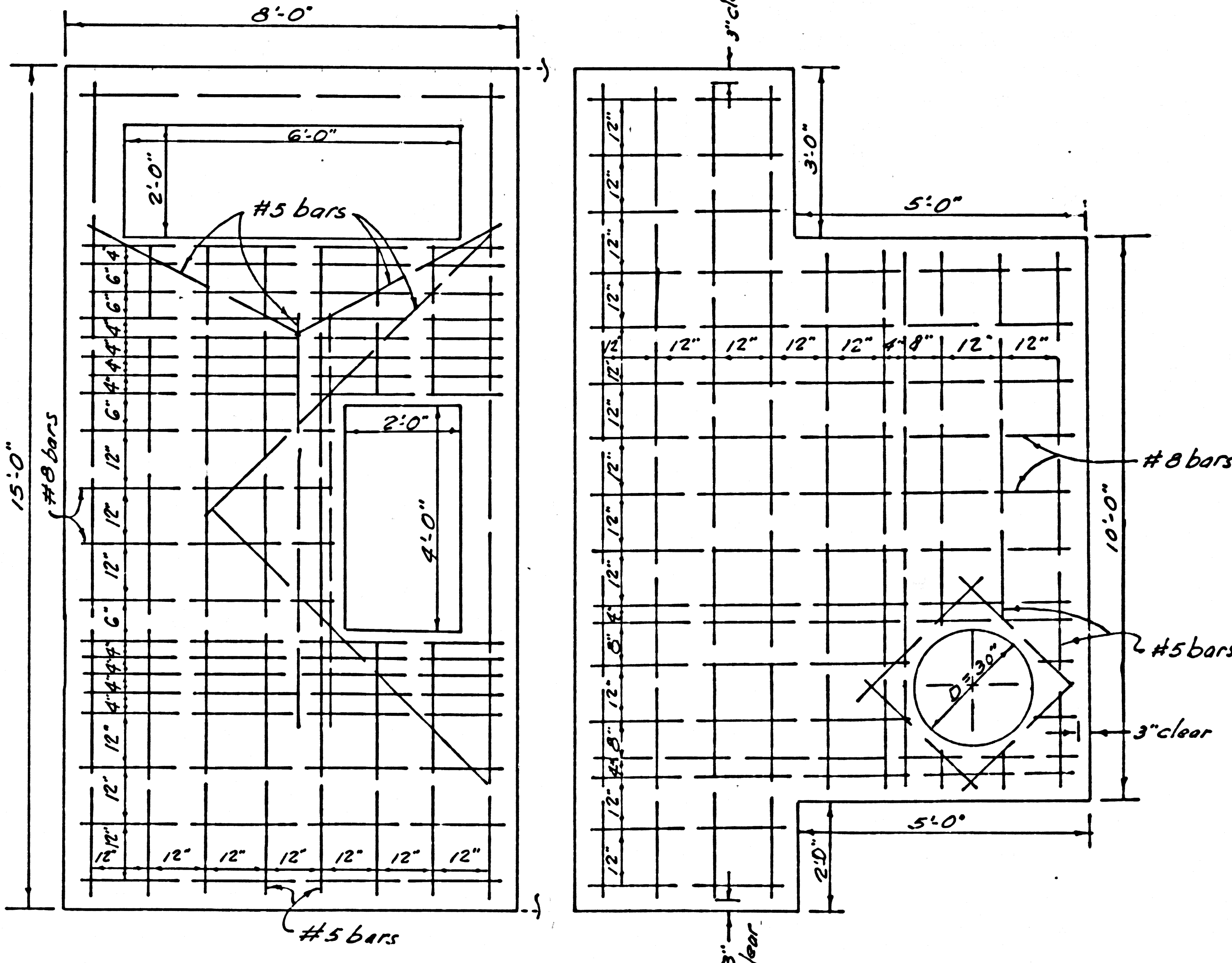


SECTION F-F

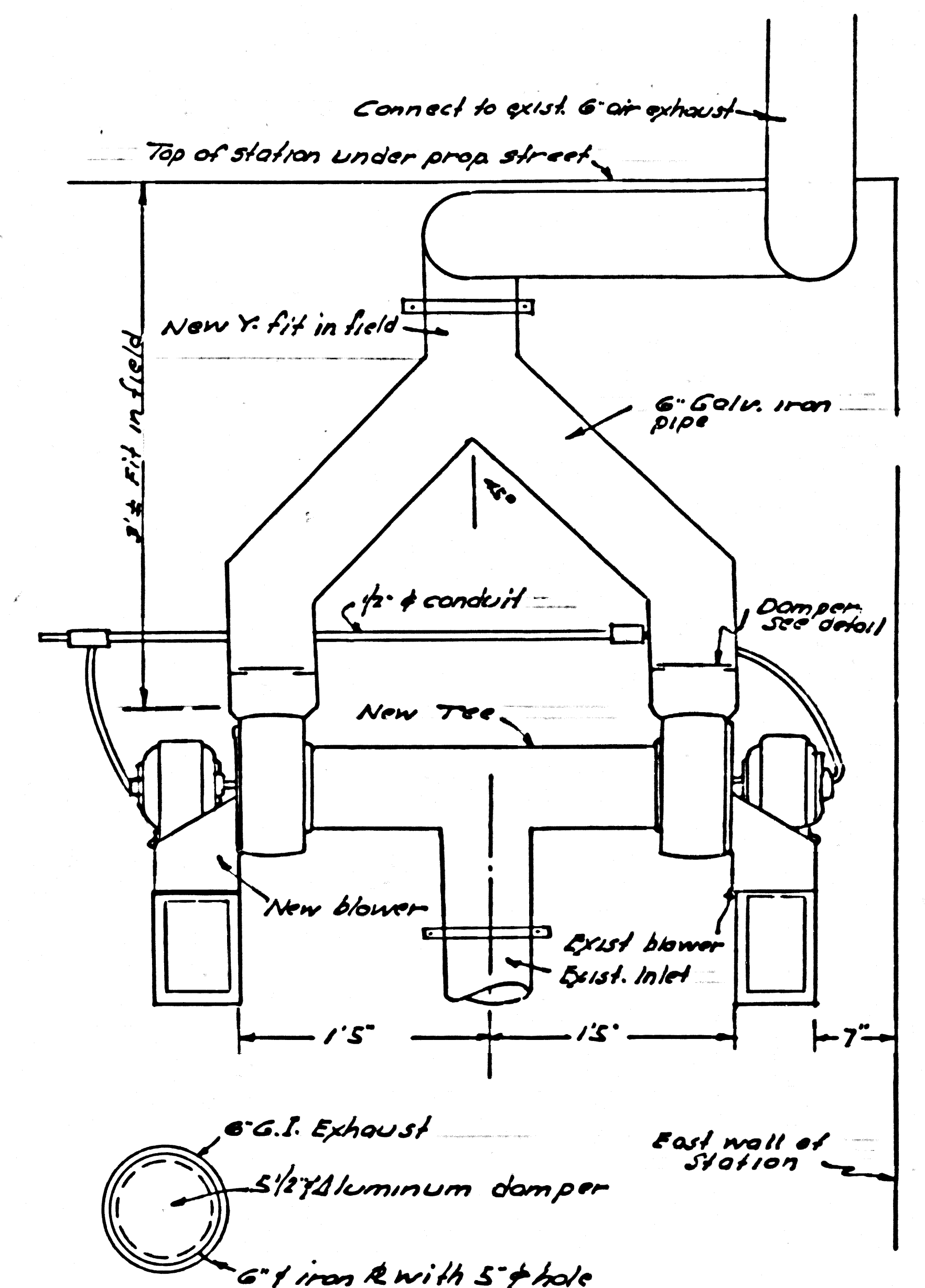
SUMP DETAIL
NO SCALE



SECTION Z-Z



TOP SLAB STEEL



Damper detail
Detail for exhaust fan added Feb. 14, 1966

PREPARED IN THE OFFICE OF
GILBERT ENGINEERING CO.
Harry Gilbert
HARRY GILBERT, R.C.E. 1797
PRIVATE CONTRACT NO. 6856-B

STRUCTURAL DETAILS

SHEET 5

SHEET 5

