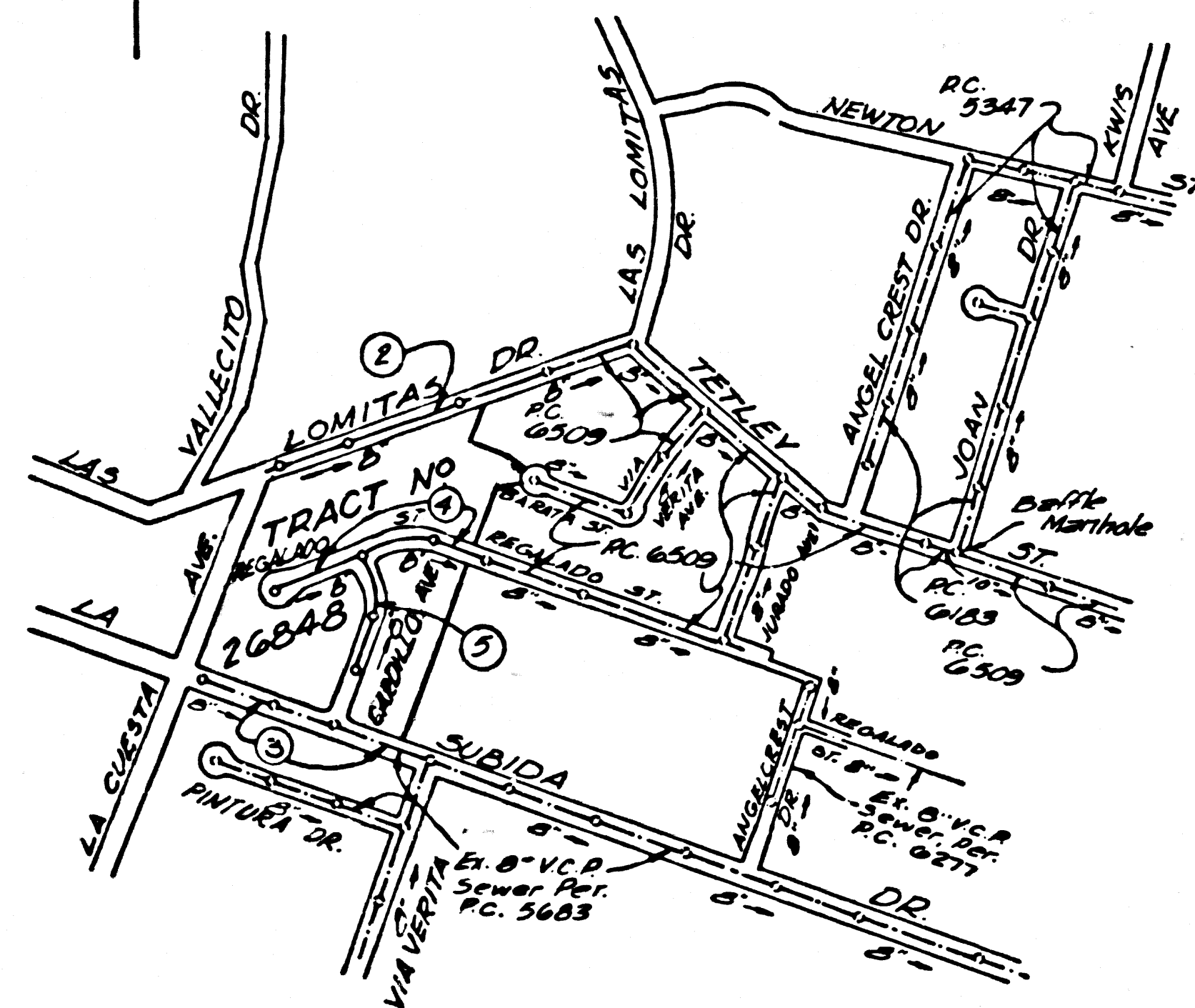


B.M. 391610 ELEV. 535.397  
 RD. HD. SPK. IN LEAD NEAR S.E. COR.  
 OF CONC. WEIR BOX @ N.E. COR. LA  
 CUESTA AVE. # LOS ALTOS DR. 1  
 30' N. & 30' E. INT.  
 WHITTIER QUAD. 1955



INDEX MAP  
 TRACT NO. 26848  
 P.C. 6859  
 SCALE: 1" = 600'

LOTS 33 & 34 SERVED BY SEWER  
 IN BARATA ST. - P.C. 6509

NOTE:  
 The existence and approximate location of underground utilities or structures shown on these plans were determined by a search of the available public records. To the best of our knowledge there are no existing underground utilities or structures except as shown on these plans.  
 The contractor is required to take due precautionary measures to protect the utilities or structures shown and any other utilities or structures at the site. It shall be the contractor's responsibility to notify the owners of the utilities or structures concerned before starting work.

REVISION  
 Revised Note # 15.  
 Moved Location of House Lateral  
 For Lot #3, From Page 5 to  
 Page 4.  
 App. Robert W. Kneal DATE 8/19/64  
 OFFICE OF COUNTY ENGINEER REC. 11256

DOUBLE VERTICAL SCALE  
 LA PUENTE BLDG. DIST. NO. 2

PROFILE ALIGNMENT AND GRADE OF  
 SANITARY SEWERS PAGE 1  
 TO BE CONSTRUCTED IN

TRACT NO. 26848  
 PRIVATE CONTRACT NO. 6859

W.S. 57438  
 3 SHEETS, 3 PAGES  
 SCALE: VERT. 1" = 5' HORIZ. 1" = 40'  
 JAN. 1964  
 PREPARED IN THE OFFICES OF  
 KEMMERER ENGR. CO. INC.  
 145 N. PAINTER AVE. WHITTIER, CALIF.  
 BY: Robert R. Flores  
 REG. C. E. NO. 11349

34719

- NOTE:
1. PROVIDE STAKES ON THE PROPERTY LINE OR PROPERTY LINES PRODUCED AT RIGHT ANGLES TO THE SEWER LINE AT THE CENTER LINE OF EACH MANHOLE.
  2. NO REPRESENTATIVE OF THE COUNTY ENGINEER WILL SURVEY OR LAY OUT ANY PORTION OF THE WORK.
  3. THE PRIVATE ENGINEER SHALL FURNISH THE COUNTY ENGINEER WITH GRADE SHEETS AND STATIONING FOR ALL HOUSE LATERALS AND Y BRANCHES AND SHALL PROVIDE STAKES FOR THEM AT THEIR PROPER LOCATIONS WITH STATIONING PLAINLY MARKED. ALL HOUSE LATERALS SHALL BE CONSTRUCTED IN A STRAIGHT ALIGNMENT AT RIGHT ANGLES FROM THE MAIN LINE SEWER EXCEPT AS SHOWN ON THE PLANS. HOUSE LATERALS FROM CHIMNEYS SHALL NOT HAVE AN ANGLE OF LESS THAN 45° WITH THE MAIN LINE SEWER. ANY CHANGE IN ALIGNMENT SHALL BE REQUESTED IN WRITING BY THE PRIVATE ENGINEER.
  4. THE PRIVATE ENGINEER SHALL FURNISH THE HOUSE LATERAL DEPTH AT THE PROPERTY LINE BELOW THE TOP OF CURB ELEVATION FOR EACH HOUSE LATERAL ON THE GRADE SHEET.
  5. NO REVISIONS SHALL BE MADE IN THESE PLANS WITHOUT THE APPROVAL OF THE COUNTY ENGINEER.
  6. THE CONTRACTOR SHALL NOTIFY THE CONSTRUCTION DIVISION BY TELEPHONE, MADISON 9-4747, EXT. 81551, AT LEAST TWENTY-FOUR HOURS BEFORE STARTING ANY WORK UNDER THIS CONTRACT.
  7. MANHOLES SHALL BE BRICK SEWER STRUCTURES PER S-1-104. PRECAST CONCRETE MANHOLES PER S-1-133 OR S-1-173 MAY BE USED AS AN ALTERNATE IN LOCATIONS APPROVED BY THE COUNTY ENGINEER.
  8. USE STANDARD MANHOLE FRAMES AND COVERS, S-1-17, ACCORDING TO NOTES.
  9. MANHOLE TOPS IN UNIMPROVED AREAS SHALL BE 20 INCHES ABOVE FINISHED GRADE.
  10. USE EXTRA STRENGTH PIPE. ALL PIPE IS STANDARD DEPTH EXCEPT AS NOTED.
  11. USE CHAMBERLAIN-MORSE MECHANICAL COMPRESSION JOINTS FOR ALL V.C.P. JOINTS PER SPECS. 34, 44, 49.
  12. WHERE FIVE GRAVITY WATER IS ENCOUNTERED DURING THE CONSTRUCTION OF THE SEWERS, THE V.C.P. JOINTS SHALL BE OF JOINT COMPOUND PER SPECS. 33 & 44, OR MECHANICAL COMPRESSION JOINTS PER SPECS. 34.
  13. IF A POWER POLE IS WITHIN THREE FEET OF THE SEWER, THE SEWER SHALL BE ENCASED, PER S-1-172, CASE III, TWO FEET ON EITHER SIDE FROM THE POINT OF INTERFERENCE.
  14. IF DURING THE COURSE OF CONSTRUCTION IT IS DETERMINED THAT THERE IS LESS THAN FOUR FEET OF COVER OVER THE TOP OF A MAIN LINE OF HOUSE LATERAL V.C.P. SEWER WHICH IS NOT INDICATED ON THE PLANS, THE PIPE SHALL BE ENCASED PER S-1-172, CASE III, UNLESS OTHERWISE APPROVED BY THE COUNTY ENGINEER.
  15. HOUSE LATERALS TO BE CONSTRUCTED WITH 1/4" BSE PER FOOT TO PROPERTY LINE.
  16. RESURFACE ALL TRENCHES WITHIN PAVED AREAS TO MEET L.A. COUNTY ROAD DEPT. OR CALIFORNIA STATE HIGHWAY REQUIREMENTS IN ACCORDANCE WITH PERMITS.
  17. FOR ALLOWABLE LEAKAGE TEST USE FORMULA NO. 2, SPECS. 34.
  18. ALL STATE AND LOCAL TRENCH SAFETY ORDERS WILL BE RIGIDLY ENFORCED.

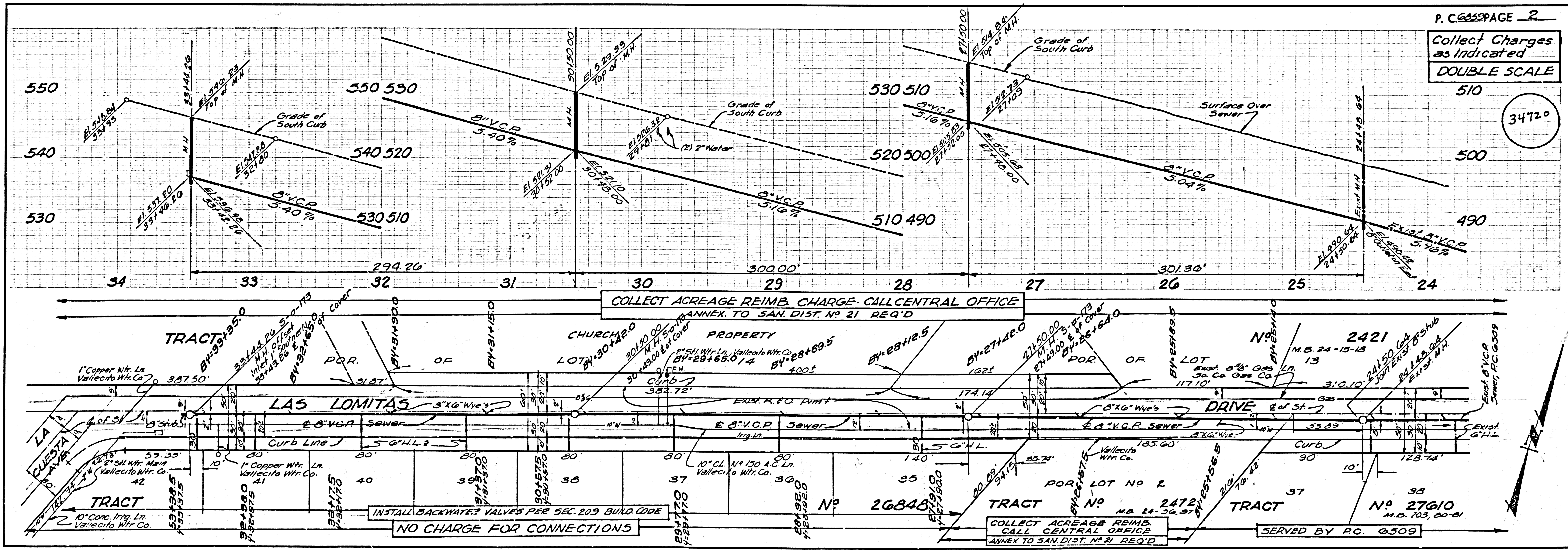
NO CONNECTIONS FOR THE DISPOSAL OF INDUSTRIAL WASTES SHALL BE MADE TO SEWERS SHOWN ON THESE DRAWINGS WITHOUT WRITTEN PERMISSION FROM THE CHIEF ENGINEER AND GENERAL MANAGER OF THE COUNTY SANITATION DISTRICTS.

COLLECT CHARGES AS INDICATED

NOTE:  
 GRADES TO WHICH THIS IMPROVEMENT IS TO BE CONSTRUCTED ARE SHOWN ON PLANS AND PROFILES. GRADE POINTS FOR TOP OF CURBS, CENTER LINE OF STREETS, OR CENTER LINE OF ALLEYS ARE SHOWN BY CIRCLES ON PROFILES. AT ALL POINTS BETWEEN DESIGNATED POINTS THE GRADE SHALL BE ESTABLISHED SO AS TO CONFORM TO A STRAIGHT LINE DRAWN BETWEEN SAID DESIGNATED POINTS. ELEVATIONS ARE IN FEET ABOVE U.S.C. & G.S. SEA LEVEL DATUM OF 1929.  
 THIS DRAWING AND THE DATA HEREON ARE HEREBY MADE A PART OF THE SPECIFICATIONS.  
 WORK SHALL BE CONSTRUCTED ACCORDING TO STANDARD SPECIFICATIONS DATED MAY 25, 1962 ON FILE IN THE OFFICE OF THE COUNTY ENGINEER AND SHALL BE PROSECUTED ONLY IN THE PRESENCE OF THE COUNTY ENGINEER.  
 BEFORE WORK CAN BE STARTED, THE CONTRACTOR MUST OBTAIN A PERMIT TO EXCAVATE IN COUNTY STREETS FROM THE L.A. COUNTY ROAD DEPT., DISTRICT OFFICE NO. 1, AND PAY A FEE TO THE COUNTY ENGINEER, ROOM 302, COUNTY ENGINEERING BUILDING, 108 WEST SECOND STREET OR SANITATION DISTRICTS REGIONAL OFFICE, SUFFICIENT TO COVER THE COST OF CONSTRUCTION INSPECTION AND RECORD PLANS.  
 APPROVAL OF THIS PLAN BY THE COUNTY OF LOS ANGELES DOES NOT CONSTITUTE A REPRESENTATION AS TO THE ACCURACY OF THE LOCATION OF OR THE EXISTENCE OR NON-EXISTENCE OF ANY UNDERGROUND UTILITY PIPE, OR STRUCTURE WITHIN THE LIMITS OF THIS PROJECT. THIS NOTE APPLIES TO ALL PAGES.  
 IF WORK IS TO BE DONE IN A STATE HIGHWAY, A PERMIT MUST BE OBTAINED FROM THE STATE OF CALIFORNIA, DIVISION OF HIGHWAYS, 120 SOUTH SPRING STREET, LOS ANGELES, CALIFORNIA.

COUNTY OF LOS ANGELES, CALIFORNIA  
 JOHN A. LAMBIE, COUNTY ENGINEER J. D. PARKHURST, CHIEF ENGINEER  
 APPROVED BY: [Signature] ASSISTANT SANITATION ENGINEER APPROVED BY: [Signature] OFFICE ENGINEER  
 SUBMITTED BY: [Signature] SANITATION DISTRICTS REGIONAL ENGINEER  
 CHECKED BY: [Signature] REG. C. E. NO. 11626

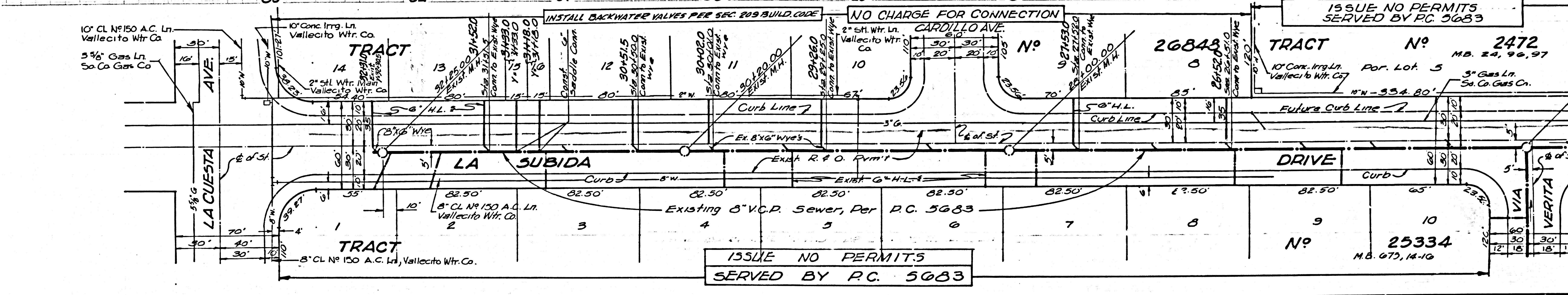
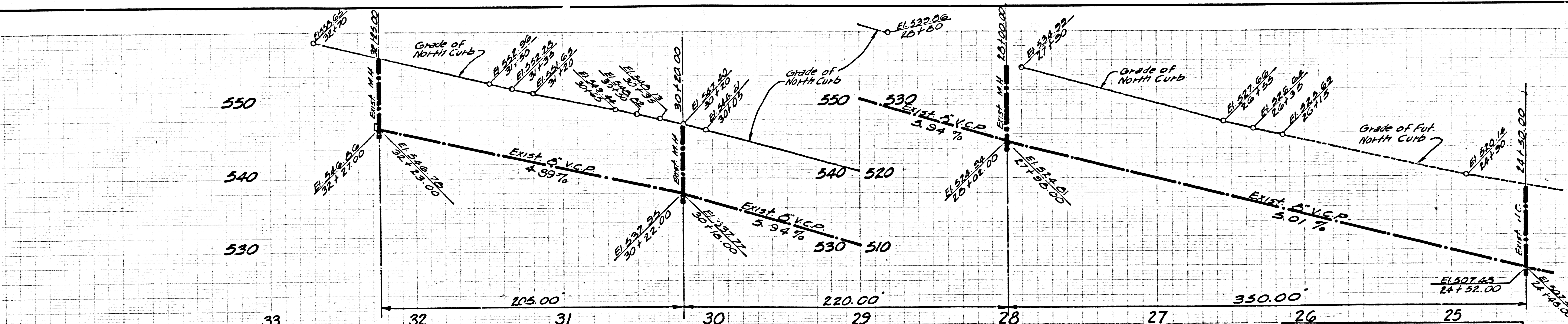
J. N. 0362. 39



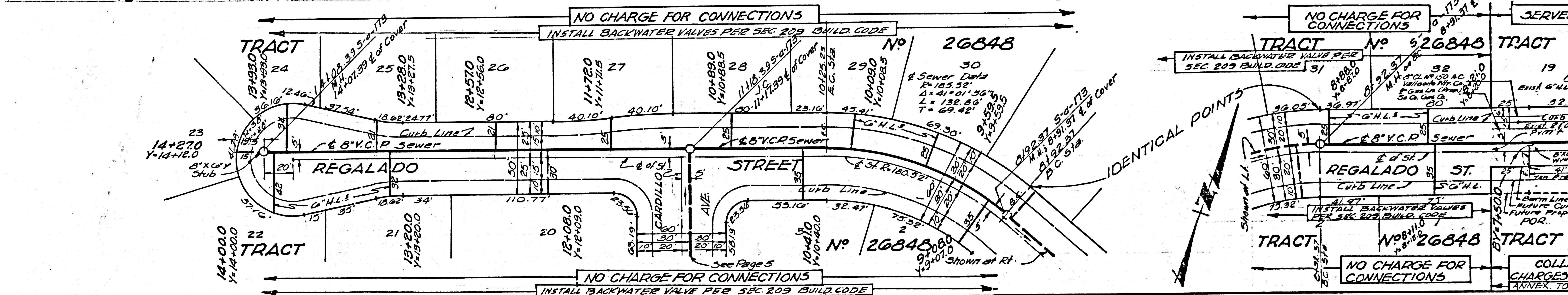
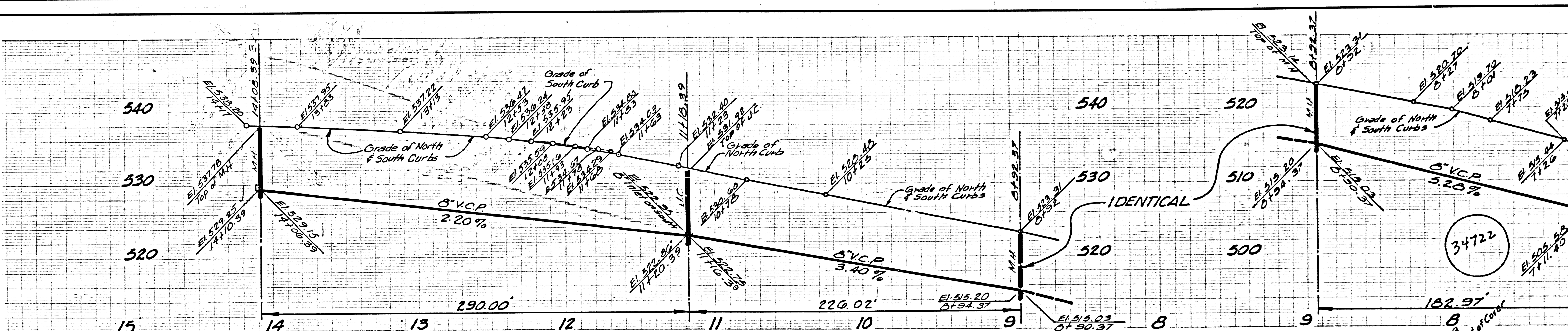
P. C. 6859 PAGE 2  
 Collect Charges as indicated  
 DOUBLE SCALE  
 34720



Collect Charges as Indicated  
DOUBLE SCALE



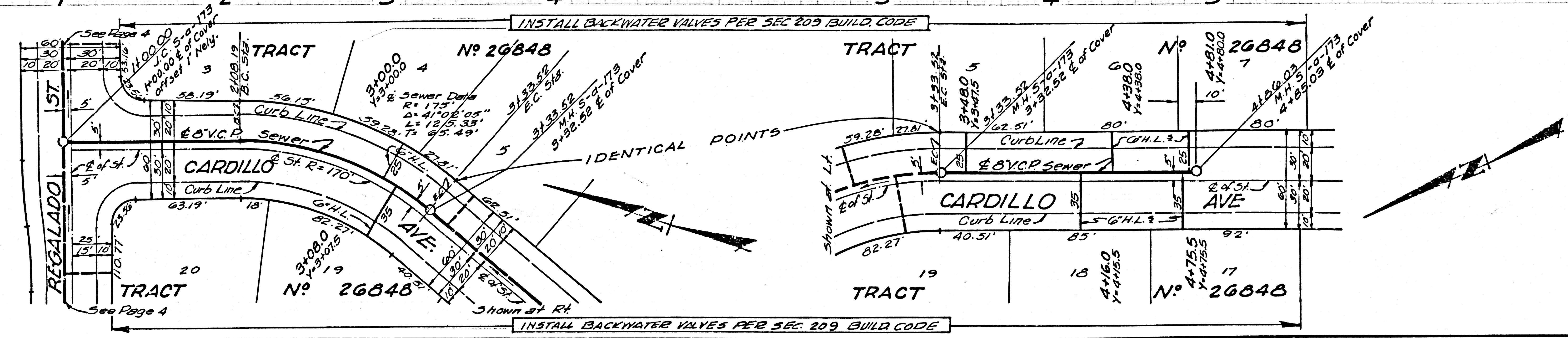
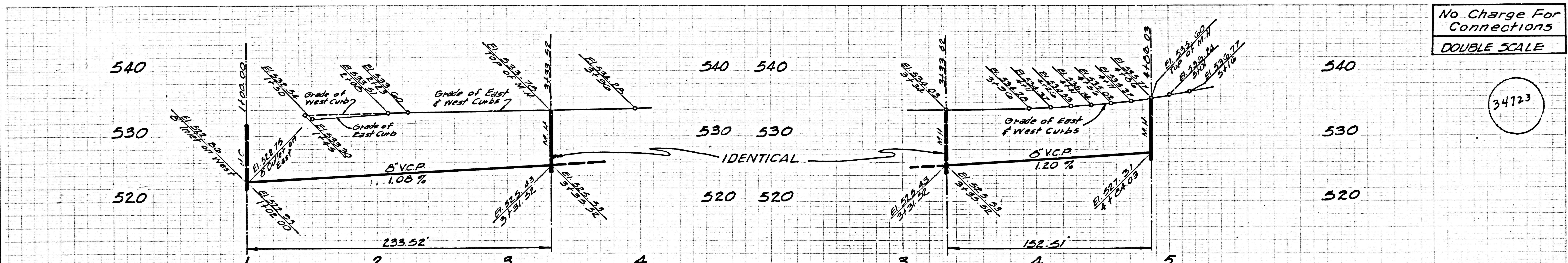
Collect Charges as Indicated  
DOUBLE SCALE





No Charge For Connections  
DOUBLE SCALE

34723



INSTALL BACKWATER VALVES PER SEC 209 BUILD CODE

INSTALL BACKWATER VALVES PER SEC 209 BUILD CODE