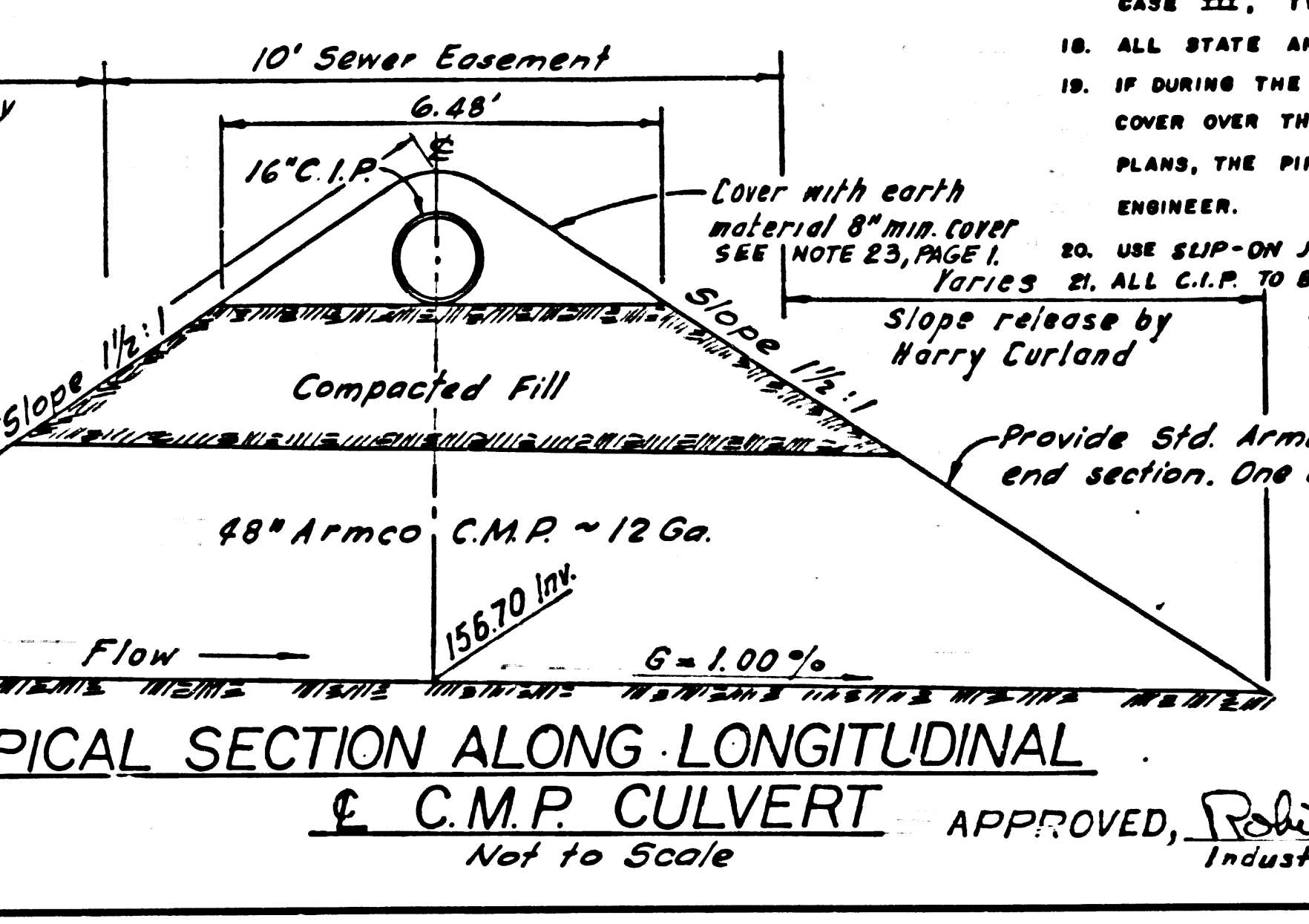
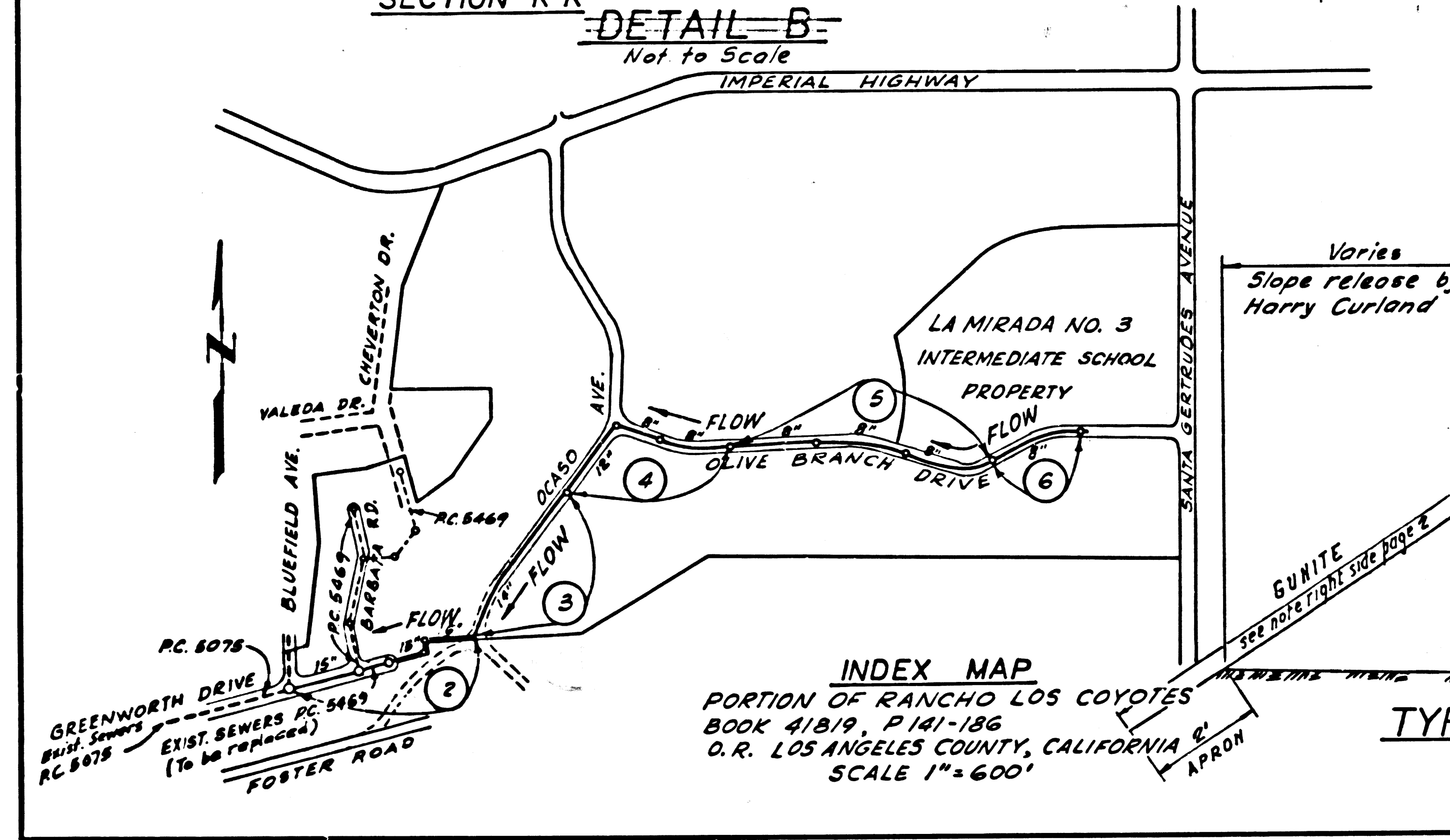


BENCH MARK No. 15 RD. LB 455-26
 L & T in E. Curb Santa Gertrudes
 Ave. 15 Ft. ± South of B.C.R. & N.E.
 Cor. Santa Gertrudes & Lawnhill
 Drive.
 Elev. 268.564
 La Mirada 55

REVISIONS:
 PAGE 1. NOTE 22 TO INCLUDE "or Equal"
 PAGE 3. CHANGE LOCATION AND SIZE OF
 "Tee" AT STA 9+00 TO A 14"x10"
 "Tee" AT STA 9+77.00
 OFFICE OF CITY ENGR. DATE

**NO CONNECTIONS FOR THE DISPOSAL OF
 INDUSTRIAL WASTES SHALL BE MADE TO
 SEWERS SHOWN ON THESE DRAWINGS
 WITHOUT WRITTEN PERMISSION FROM THE
 CHIEF ENGINEER AND GENERAL MANAGER
 OF THE COUNTY SANITATION DISTRICT.**



LA MIRADA BLDG. DIST. NO. 4.08

- NOTES:**
- PROVIDE STAKES ON THE PROPERTY LINE OR PROPERTY LINES PRODUCED AT RIGHT ANGLES TO THE SEWER LINE AT THE CENTER LINE OF EACH MANHOLE.
 - NO REPRESENTATIVE OF THE COUNTY ENGINEER WILL SURVEY OR LAYOUT ANY PORTION OF THE WORK.
 - THE PRIVATE ENGINEER SHALL FURNISH THE COUNTY ENGINEER WITH GRADE SHEETS AND STATION FOR ALL HOUSE LATERALS AND Y BRANCHES AND SHALL PROVIDE STAKES FOR THEM AT THEIR PROPER LOCATIONS WITH STATIONINGS PLAINLY MARKED. ANY CHANGE IN ALIGNMENT SHALL BE REQUESTED IN WRITING BY THE PRIVATE ENGINEER.
 - NO REVISIONS SHALL BE MADE IN THESE PLANS WITHOUT THE APPROVAL OF THE CITY ENGINEER.
 - USE STANDARD MANHOLE FRAMES AND COVERS, S-117, EXCEPT AS NOTED.
 - USE EXTRA STRENGTH PIPE ALL PIPE IS STANDARD DEPTH EXCEPT AS NOTED.
 - USE MECHANICAL COMPRESSION JOINTS FOR ALL V.C.P. PER SPEC. REC. 34, 48 & 49.
 - RESURFACE ALL TRENCH WITHIN PAVED AREA TO MEET L. A. COUNTY ROAD DEPT. OR CALIF. STATE HIGHWAY DEPT. REQUIREMENTS IN ACCORDANCE WITH PERMITS.
 - ENCASE SEWER AS NOTED PER S-A-172 - CASE III.
 - LAY ALL V.C.P. HORIZONTAL AND CONSTRUCT HOUSE LATERAL WITH 2% GRADE FROM WYE CONNECTION.
 - MANHOLES SHALL BE BRICK SEWER STRUCTURES PER S-A-104. PRECAST CONCRETE MANHOLES PER S-A-138 OR S-A-173 MAY BE USED AS AN ALTERNATE IN LOCATIONS APPROVED BY THE COUNTY ENGINEER.
 - FOR ALLOWABLE LEAKAGE TEST USE FORMULA NO. 2 - SPEC. SEC. 34.
 - MANHOLE TOPS IN UNIMPROVED RIGHTS-OF-WAY TO BE 4" ABOVE FINISHED GRADE.
 - NO CONSTRUCTION WILL BE PERMITTED IN FILLED AREAS UNLESS ACCEPTABLE CERTIFICATION IS SUBMITTED TO THE CONSTRUCTION DIVISION OF THE COUNTY ENGINEER THAT THE COMPACTION IS EQUAL OR GREATER THAN 80%.
 - THE PRIVATE ENGINEER SHALL FURNISH THE HOUSE LATERAL DEPTH AT THE PROPERTY LINE BELOW THE TOP OF CURB ELEVATION FOR EACH HOUSE LATERAL ON THE GRADE SHEET.
 - THE CONTRACTOR SHALL NOTIFY THE CONSTRUCTION DIVISION BY TELEPHONE, MADISON 9 47 47, EXT. 8181, AT LEAST TWENTY-FOUR HOURS BEFORE STARTING ANY WORK UNDER THIS CONTRACT.
 - IF A POWER POLE IS WITHIN THREE FEET OF THE SEWER, THE SEWER SHALL BE ENCASED, PER S-A-172 CASE III, TWO FEET ON EACH SIDE FROM THE POINT OF INTERFERENCE.
 - ALL STATE AND LOCAL TRENCH SAFETY ORDERS WILL BE RIGIDLY ENFORCED.
 - IF DURING THE COURSE OF CONSTRUCTION IT IS DETERMINED THAT THERE IS LESS THAN FOUR FEET OF COVER OVER THE TOP OF A MAIN LINE OR HOUSE LATERAL V.C.P. SEWER WHICH IS NOT INDICATED ON THE PLANS, THE PIPE SHALL BE ENCASED PER S-A-172, CASE III, UNLESS OTHERWISE APPROVED BY THE COUNTY ENGINEER.
 - USE SLEEP-ON JOINTS FOR C.I.P. PER SPEC. SEC. 40.
 - TEE'S & WYES FOR CLEANOUT TO BE AS 12" x 12" FLANGES, A.M.W.A. B161 WITH NEOPRENE GASKET OR EQUAL.
 - THE CONTRACTOR SHALL PLANT MUSTARD AND RYE GRASS ON ALL UNPAVED LEAVES, FROM CREST TO TOE OF FILL, AND ADEQUATELY WATER UNTIL GROWTH IS RESTORED.

COLLECT CHARGES AS INDICATED
[Signature]

APPROVED, *[Signature]*
 Industrial Waste Division

**PROFILE ALIGNMENT AND GRADE OF P.C. 6864
 SANITARY SEWERS PAGE 1**

TO BE CONSTRUCTED IN
 LA MIRADA INTERMEDIATE SCHOOL NO. 3

PRIVATE CONTRACT NO. 6864
 W.S. 34
 3 SHEETS, 6 PAGES

SCALE: VERT. 1" = 4'
 HORIZ. 1" = 40'
 FEBRUARY, 1964
 PREPARED IN THE OFFICES OF
 KISTNER, WRIGHT & WRIGHT

36088

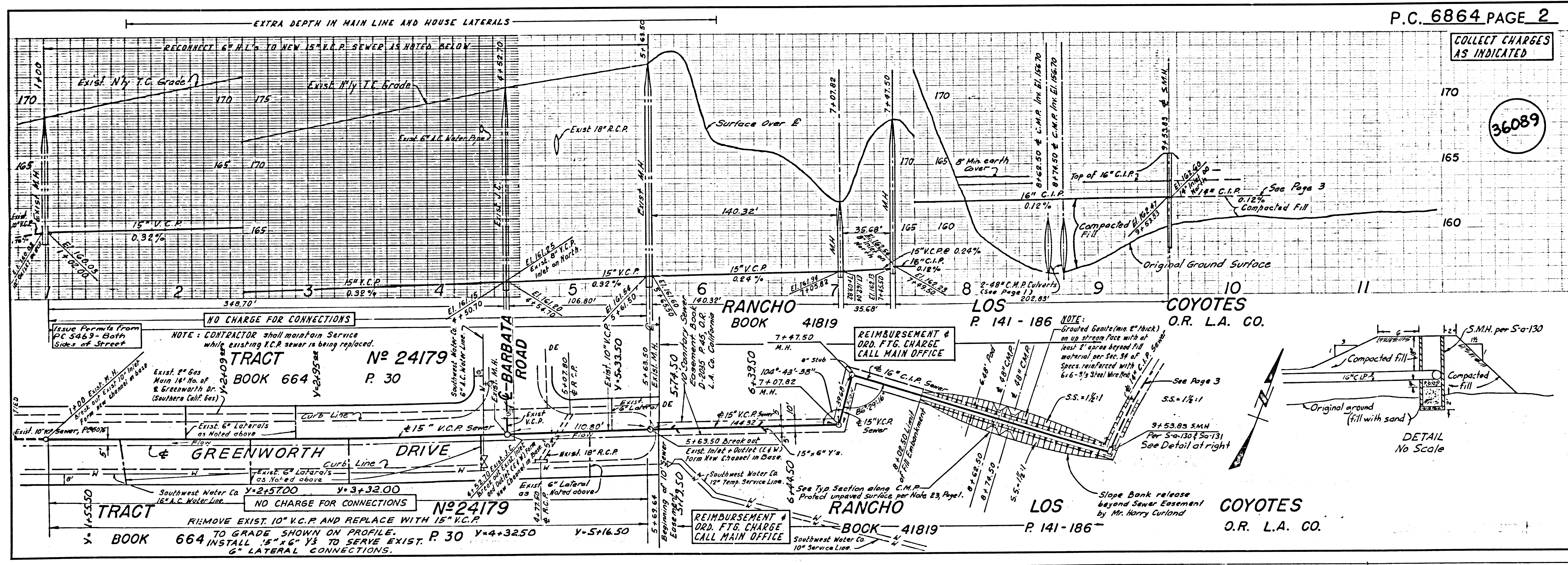
BY *[Signature]*
 REG. C.E. NO. 6617
 FOR LEGEND SEE PLAN NO. S-A-64

NOTE:
 GRADES TO WHICH THIS IMPROVEMENT IS TO BE CONSTRUCTED ARE SHOWN ON PLANS AND PROFILES. GRADE POINTS FOR TOP OF CURBS, CENTER LINE OF STREETS, OR CENTER LINE OF ALLEYS ARE SHOWN BY CIRCLES ON PROFILES. AT ALL POINTS BETWEEN DESIGNATED POINTS THE GRADE SHALL BE ESTABLISHED SO AS TO CONFORM TO A STRAIGHT LINE DRAWN BETWEEN SAID DESIGNATED POINTS.
 ELEVATIONS ARE IN FEET ABOVE U.S.G.S. DATUM OR MEAN SEA LEVEL.
 THIS DRAWING AND THE DATA HEREON ARE HEREBY MADE A PART OF THE SPECIFICATIONS.
 WORK SHALL BE CONSTRUCTED ACCORDING TO SPECIFICATIONS ON FILE IN THE OFFICE OF THE CITY ENGINEER AND SHALL BE PERFORMED ONLY IN THE PRESENCE OF THE CITY ENGINEER.
 BEFORE WORK CAN BE STARTED THE CONTRACTOR MUST OBTAIN A PERMIT TO EXCAVATE IN CITY STREETS FROM THE L. A. COUNTY ROAD DEPT., DISTRICT NO. 4 AND MAKE A DEPOSIT WITH CITY OF LA MIRADA, HOOD, LUTYLLER AVENUE, SUFFICIENT TO COVER THE COST OF CONSTRUCTION INSPECTION AND RECORD PLANS.
 APPROVAL OF THIS PLAN BY THE COUNTY OF LOS ANGELES DOES NOT CONSTITUTE A REPRESENTATION AS TO THE ACCURACY OF THE LOCATION OF OR THE EXISTENCE OR NON-EXISTENCE OF ANY UNDERGROUND UTILITY PIPE, OR STRUCTURE WITHIN THE LIMITS OF THIS PROJECT. THIS NOTE APPLIES TO ALL PAGES.
 IF WORK IS TO BE DONE IN A STATE HIGHWAY, A PERMIT MUST BE OBTAINED FROM THE STATE OF CALIFORNIA, DIVISION OF HIGHWAYS, 130 SOUTH SPRING STREET.

CITY OF LA MIRADA, CALIFORNIA
 APPROVED, JOHN A. LAMBIE, CITY ENGINEER
 APPROVED, J. D. PARKHURST, CHIEF ENGINEER
 CO. SAN. DIST. NO. 18
 BY *[Signature]* ASST. SANITATION ENGINEER
 BY *[Signature]* OFFICE ENGINEER
 CHECKED BY *[Signature]*
 OFFICE OF CITY ENGINEER, P.O. BOX 13878

SUBMITTED:
[Signature] 5-25-64
 LOS CERRITOS REGIONAL ENGINEER, A.C.E. 3871

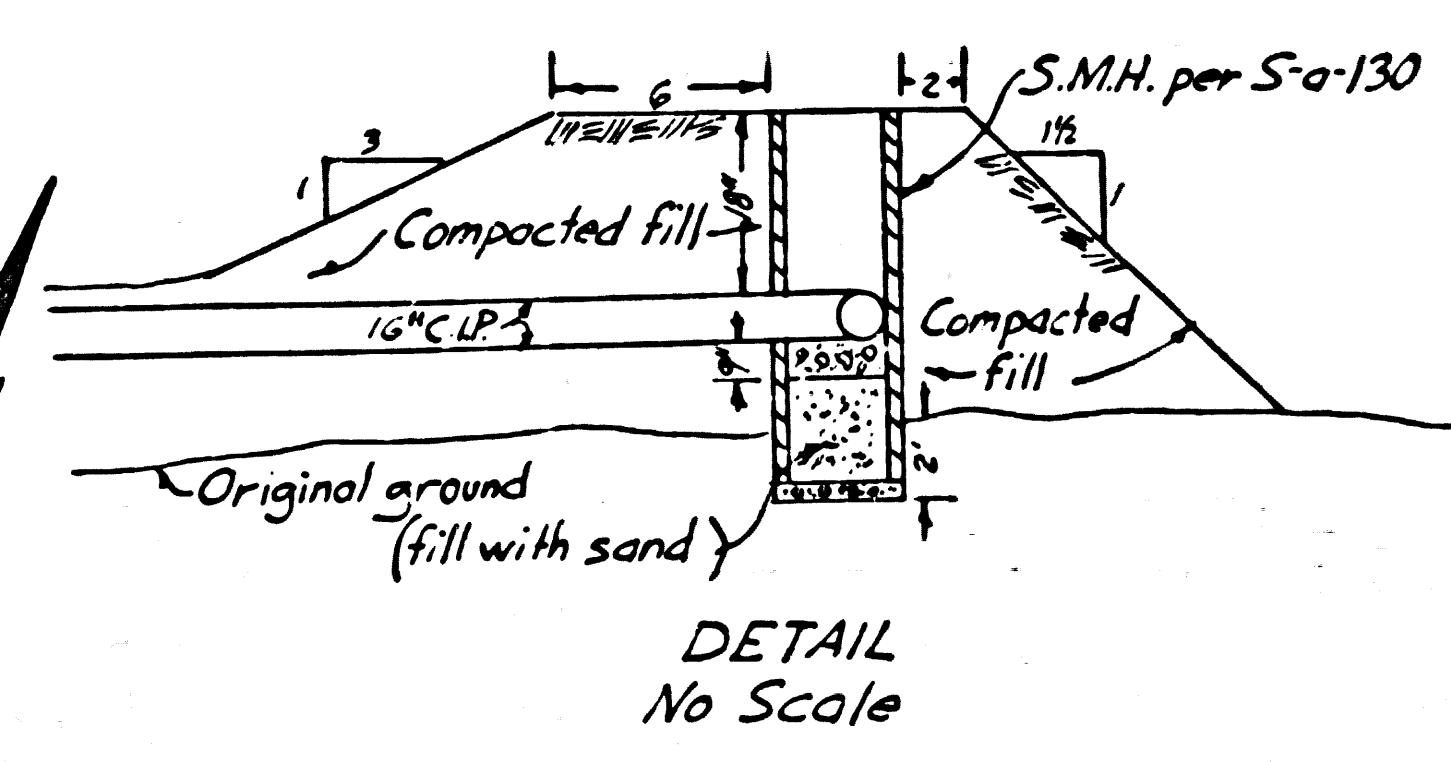
APPROVED:
[Signature]
 CITY MANAGER, CITY OF LA MIRADA



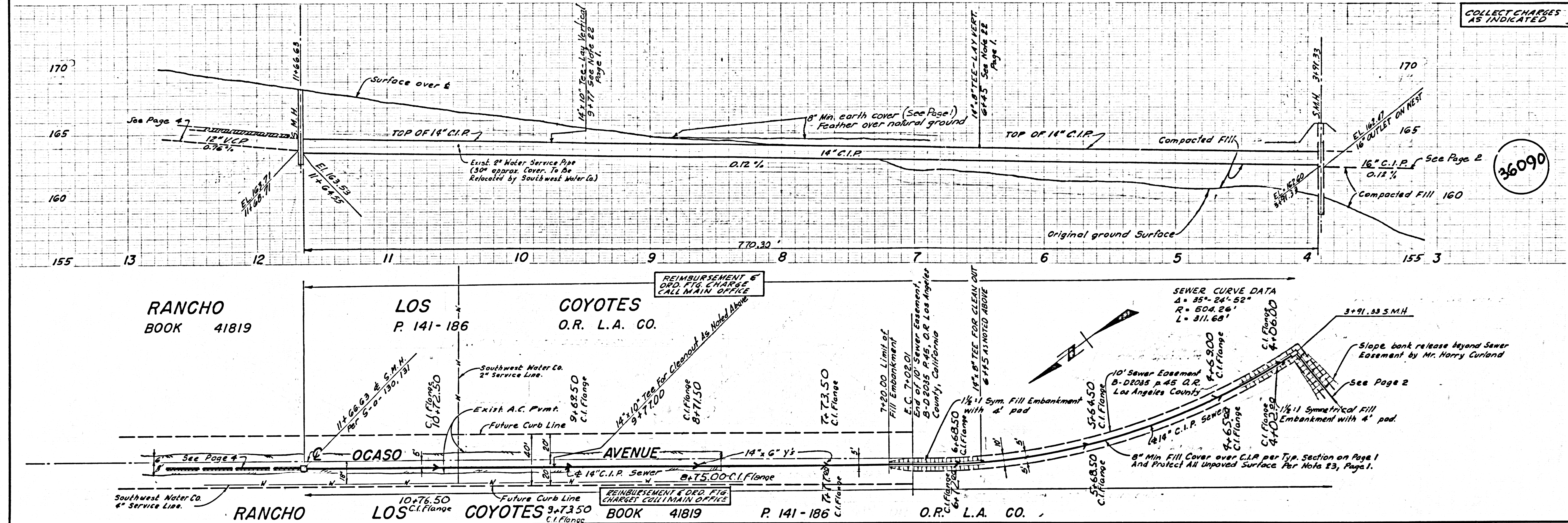
P.C. 6864 PAGE 2

COLLECT CHARGES AS INDICATED

36089



COLLECT CHARGES AS INDICATED



36090

RANCHO BOOK 41819

LOS P. 141-186

COYOTES O.R. L.A. CO.

RANCHO BOOK 41819

LOS P. 141-186

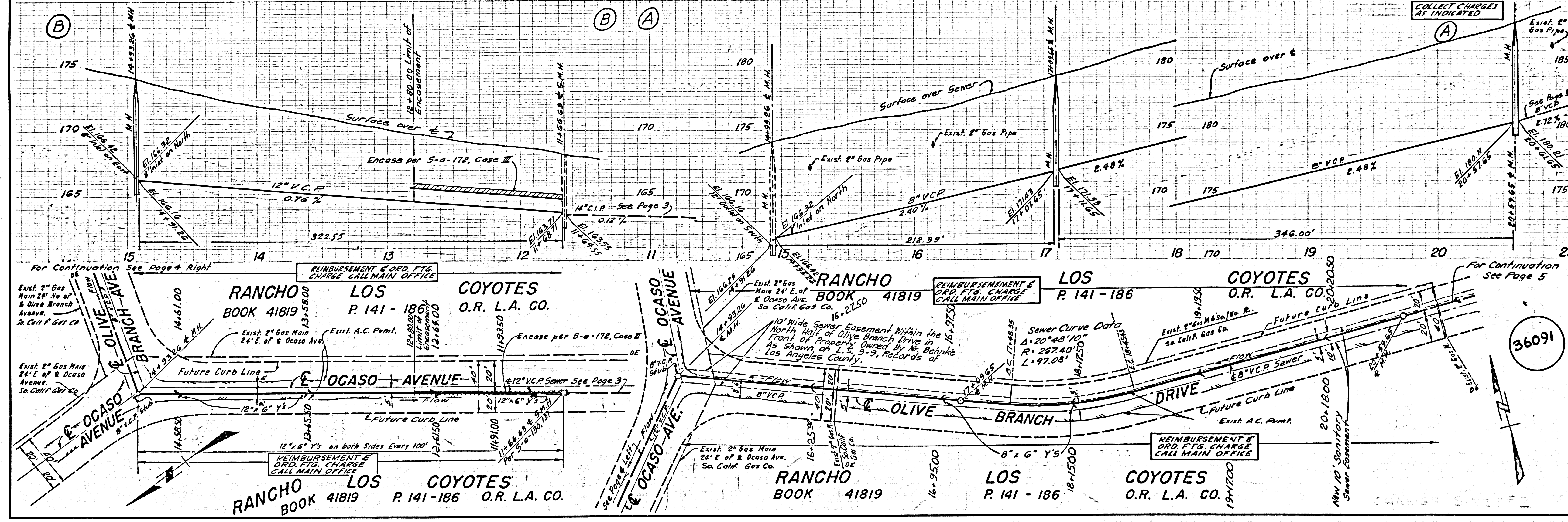
COYOTES O.R. L.A. CO.

RANCHO BOOK 41819

LOS P. 141-186

COYOTES O.R. L.A. CO.

COLLECT CHARGES AS INDICATED



36091

RANCHO BOOK 41819

LOS P. 141-186

COYOTES O.R. L.A. CO.

RANCHO BOOK 41819

LOS P. 141-186

COYOTES O.R. L.A. CO.

RANCHO BOOK 41819

LOS P. 141-186

COYOTES O.R. L.A. CO.

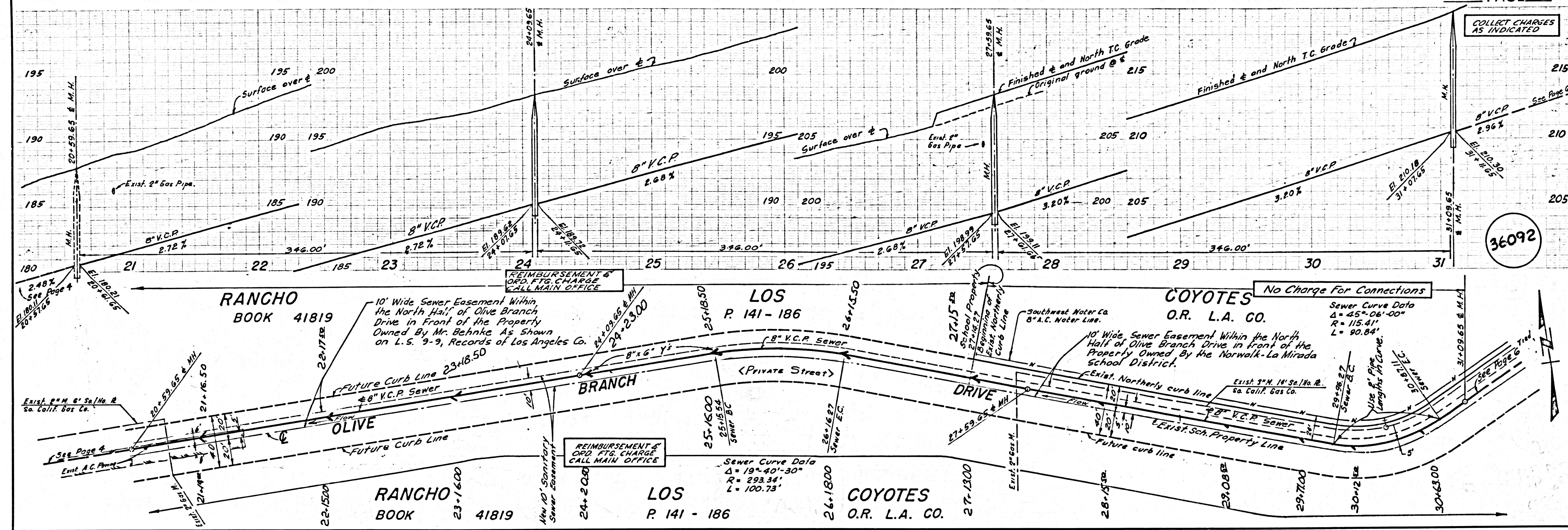
RANCHO BOOK 41819

LOS P. 141-186

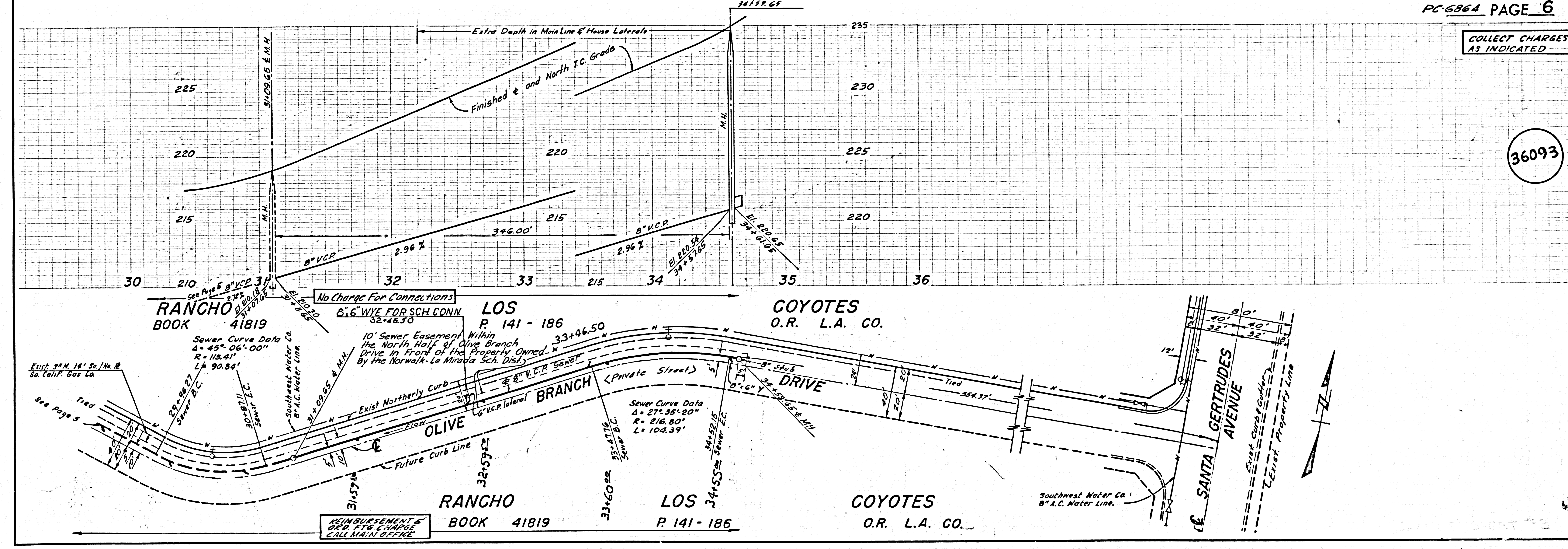
COYOTES O.R. L.A. CO.

Dr. by Petrohde

COLLECT CHARGES AS INDICATED



COLLECT CHARGES AS INDICATED



Dr. by Pedrehte