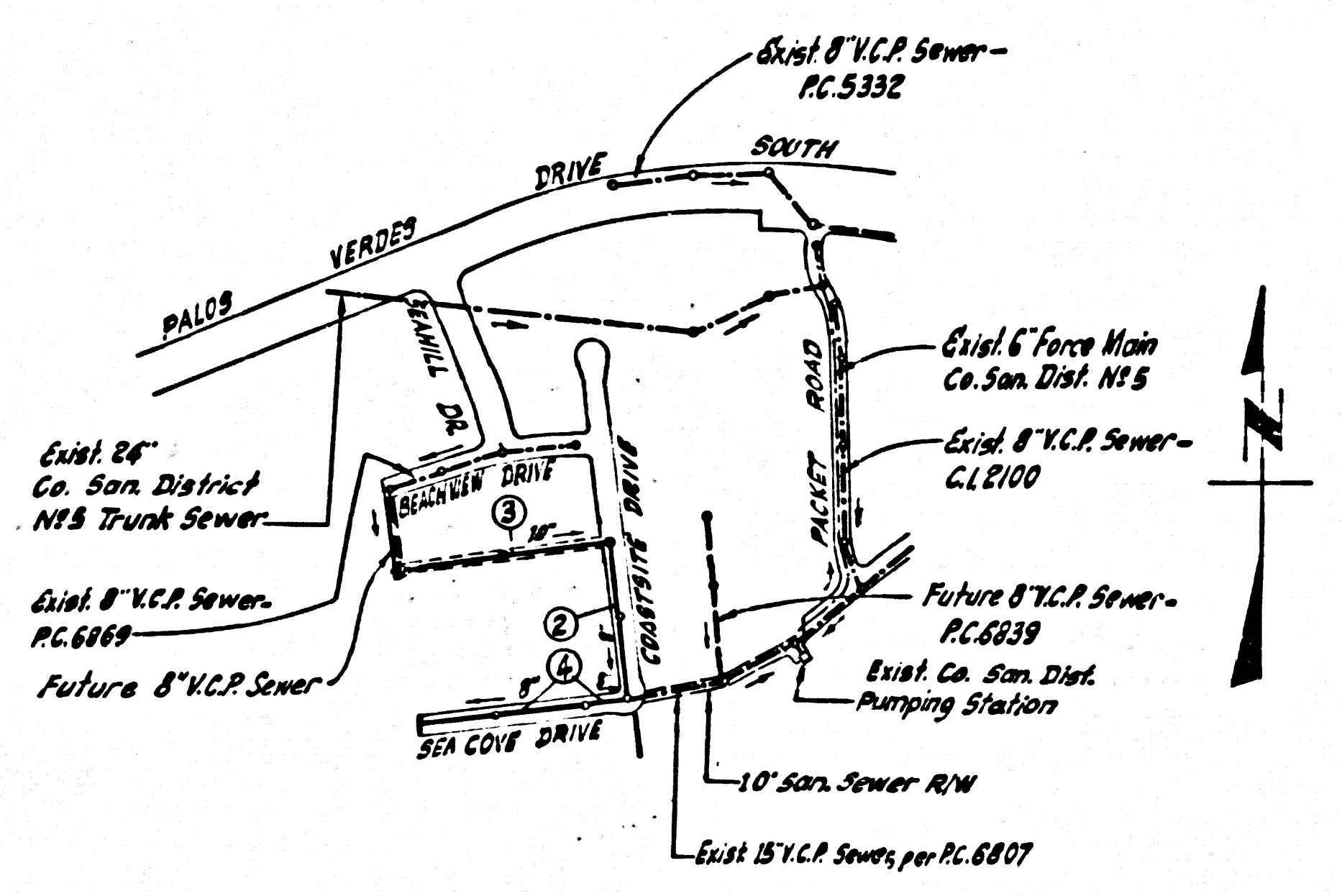


B.M. SY 6074 ELEV. 235.239
 C.S. Man. In Well nr. Oil Patch Rd.
 12625. C.L. Palos Verde S.
 Nhd. "B.M. 34-21 1953 R.E. 63"
 PALOS VERDES QUAD. 1960



INDEX MAP
 TRACT NO 28937
 P.C. 6866
 Scale: 1"=600'
 NOTE: Numbers in circles indicate page numbers.

ISSUE NO HOUSE CONNECTION PERMITS - CALL SANIT. DIVN.

DOUBLE SCALE
LOMITA BLDG. DIST. NO. 12

PROFILE ALIGNMENT AND GRADE OF
SANITARY SEWERS PAGE 1
 TO BE CONSTRUCTED IN

- PROVIDE STAKES ON THE PROPERTY LINE OR PROPERTY LINES PRODUCED AT RIGHT ANGLES TO THE SEWER LINE AT THE CENTER LINE OF EACH MANHOLE.
- NO REPRESENTATIVE OF THE COUNTY ENGINEER WILL SURVEY OR LAY OUT ANY PORTION OF THE WORK.
- THE PRIVATE ENGINEER SHALL FURNISH THE COUNTY ENGINEER WITH GRADE SHEETS AND STATIONING FOR ALL HOUSE LATERALS AND Y BRANCHES AND SHALL PROVIDE STAKES FOR THEM AT THEIR PROPER LOCATIONS WITH STATIONING PLANNY MARKED. ALL HOUSE LATERALS SHALL BE CONSTRUCTED IN A STRAIGHT ALIGNMENT AT RIGHT ANGLES FROM THE MAIN LINE SEWER EXCEPT AS SHOWN ON THE PLANS. HOUSE LATERALS FROM CHIMNEYS SHALL NOT HAVE AN ANGLE OF LESS THAN 45° WITH THE MAIN LINE SEWER. ANY CHANGE IN ALIGNMENT SHALL BE REQUESTED IN WRITING BY THE PRIVATE ENGINEER.
- THE PRIVATE ENGINEER SHALL FURNISH THE HOUSE LATERAL DEPTH AT THE PROPERTY LINE BELOW THE TOP OF CURB ELEVATION FOR EACH HOUSE LATERAL ON THE GRADE SHEET.
- NO REVISIONS SHALL BE MADE IN THESE PLANS WITHOUT THE APPROVAL OF THE COUNTY ENGINEER.
- THE CONTRACTOR SHALL NOTIFY THE CONSTRUCTION DIVISION BY TELEPHONE, MADISON 9-4747, EXT. 8155, AT LEAST TWENTY-FOUR HOURS BEFORE STARTING ANY WORK UNDER THIS CONTRACT.
- MANHOLES SHALL BE BRICK SEWER STRUCTURES PER S-104. PRECAST CONCRETE MANHOLES PER S-135 OR S-173 MAY BE USED AS AN ALTERNATE IN LOCATIONS APPROVED BY THE COUNTY ENGINEER.
- USE STANDARD MANHOLE FRAMES AND COVERS, S-117, EXCEPT AS NOTED.
- MANHOLE TOPS IN UNIMPROVED RIGHTS-OF-WAY TO BE SIX INCHES ABOVE FINISHED GRADE.
- USE EXTRA STRENGTH PIPE. ALL PIPE IS STANDARD DEPTH EXCEPT AS NOTED.
- USE CEMENT MORTAR OR MECHANICAL COMPRESSION JOINTS FOR ALL V.C.P. JOINTS PER SPECS., SECT. 34, 48 & 49.
- WHERE EVER GROUND WATER IS ENCOUNTERED DURING THE CONSTRUCTION OF THE SEWERS, THE V.C.P. JOINTS SHALL BE JOINT COMPOUND PER SPECS., SECT. 26 & 49, OR MECHANICAL COMPRESSION JOINTS PER SPECS., SECT. 56.
- IF A POWER POLE IS WITHIN THREE FEET OF THE SEWER, THE SEWER SHALL BE ENCASED, PER S-173, CASE III, TWO FEET ON EITHER SIDE FROM THE POINT OF INTERFERENCE.
- IF DURING THE COURSE OF CONSTRUCTION IT IS DETERMINED THAT THERE IS LESS THAN FOUR FEET OF COVER OVER THE TOP OF A MAIN LINE OR HOUSE LATERAL V.C.P. SEWER WHICH IS NOT INDICATED ON THE PLANS, THE PIPE SHALL BE ENCASED PER S-173, CASE III, UNLESS OTHERWISE APPROVED BY THE COUNTY ENGINEER.
- HOUSE LATERALS TO BE CONSTRUCTED WITH INVERTS AT PROPERTY LINE... 6... FEET BELOW CURB GRADE EXCEPT AS NOTED.
- RESURFACE ALL TRENCHES WITHIN PAVED AREAS TO MEET L.A. COUNTY ROAD DEPT. OR CALIFORNIA STATE HIGHWAY REQUIREMENTS IN ACCORDANCE WITH PERMITS.
- FOR ALLOWABLE LEAKAGE TEST USE FORMULA NO. 1000 PER SPECS., SECT. 54.
- ALL STATE AND LOCAL TRENCH SAFETY ORDERS WILL BE RIGIDLY ENFORCED.

NO CONNECTIONS FOR THE DISPOSAL OF INDUSTRIAL WASTES SHALL BE MADE TO SEWERS SHOWN ON THESE DRAWINGS WITHOUT WRITTEN PERMISSION FROM THE CHIEF ENGINEER AND GENERAL MANAGER OF THE COUNTY SANITATION DISTRICTS.

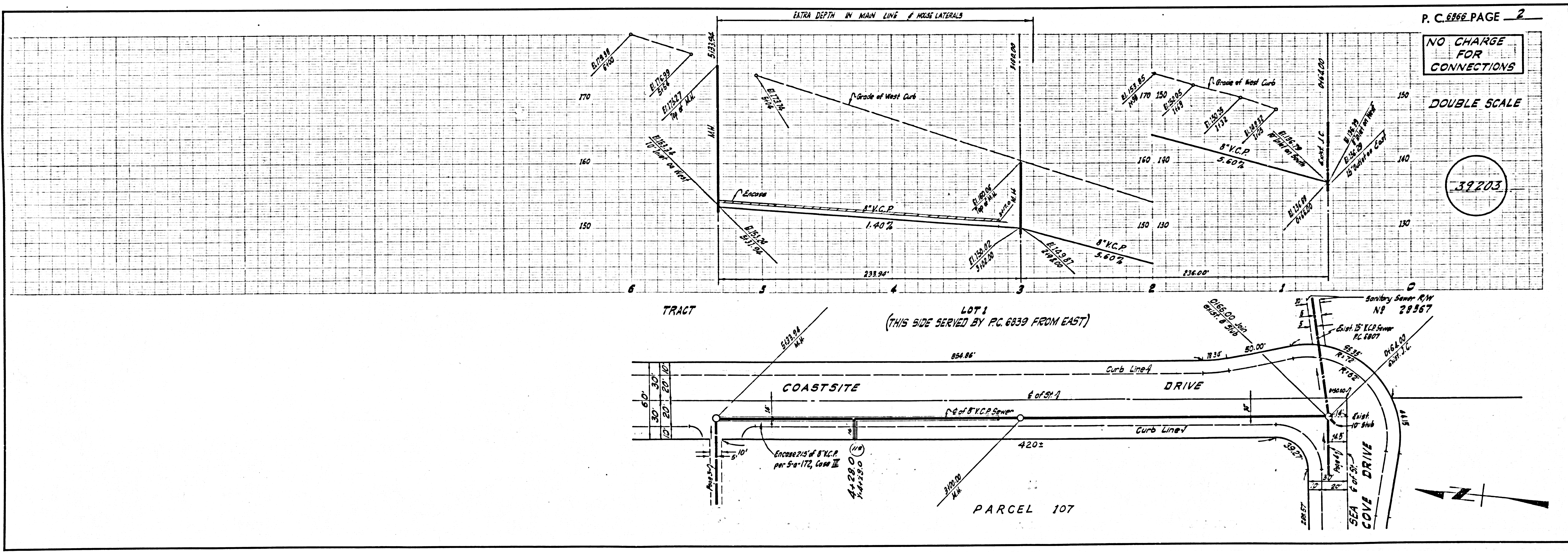
COLLECT CHARGES AS INDICATED
 Sk. Wade 4-1744

TRACT NO 28937
 PRIVATE CONTRACT NO. 6866
 W.S. 27
 2 SHEETS, 4 PAGES
 SCALE: VERT. 1"=4' HORIZ. 1"=40'
 JANUARY, 1964
 PREPARED IN THE OFFICES OF
MEINTIRE & QUIROS, INC.
 REG. C. E. NO. 8583
 FOR LEGEND SEE PLAN NO. S-6-64

NOTE:
 GRADES TO WHICH THIS IMPROVEMENT IS TO BE CONSTRUCTED ARE SHOWN ON PLANS AND PROFILES. GRADE POINTS FOR TOP OF CURBS, CENTER LINE OF STREETS, OR CENTER LINE OF ALLEYS ARE SHOWN BY CIRCLES ON PROFILES. AT ALL POINTS BETWEEN DESIGNATED POINTS THE GRADE SHALL BE ESTABLISHED SO AS TO CONFORM TO A STRAIGHT LINE DRAWN BETWEEN SAID DESIGNATED POINTS. ELEVATIONS ARE IN FEET ABOVE U.S.C. & G.S. SEA LEVEL DATUM OF 1929.
 THIS DRAWING AND THE DATA HEREON ARE HEREBY MADE A PART OF THE SPECIFICATIONS.
 WORK SHALL BE CONSTRUCTED ACCORDING TO STANDARD SPECIFICATIONS DATED MARCH 22, 1952, ON FILE IN THE OFFICE OF THE COUNTY ENGINEER AND SHALL BE PROSECUTED ONLY IN THE PRESENCE OF THE COUNTY ENGINEER.
 BEFORE WORK CAN BE STARTED, THE CONTRACTOR MUST OBTAIN A PERMIT TO EXCAVATE IN COUNTY STREETS FROM THE L.A. COUNTY ROAD DEPT., DISTRICT OFFICE NO. 3, AND PAY A FEE TO THE COUNTY ENGINEER, ROOM 200, COUNTY ENGINEER'S BUILDING, 108 WEST SECOND STREET OR PALOS VERDES REGIONAL OFFICE, SUFFICIENT TO COVER THE COST OF CONSTRUCTION INSPECTION AND RECORD PLANS.
 APPROVAL OF THIS PLAN BY THE COUNTY OF LOS ANGELES DOES NOT CONSTITUTE A REPRESENTATION AS TO THE ACCURACY OF THE LOCATION OR OF THE EXISTENCE OR NON-EXISTENCE OF ANY UNDERGROUND UTILITY PIPE, OR STRUCTURE WITHIN THE LIMITS OF THIS PROJECT. THIS NOTE APPLIES TO ALL PAGES.
 IF WORK IS TO BE DONE IN A STATE HIGHWAY, A PERMIT MUST BE OBTAINED FROM THE STATE OF CALIFORNIA, DIVISION OF HIGHWAYS, 120 SOUTH BRINK STREET, LOS ANGELES, CALIFORNIA.

COUNTY OF LOS ANGELES, CALIFORNIA
 JOHN A. LAMBIE, COUNTY ENGINEER
 J. D. PARKHURST, CHIEF ENGINEER
 CO. SAN. DIST. NO. 12
 APPROVED BY: [Signature] ASSISTANT SANITATION ENGINEER
 APPROVED BY: [Signature] OFFICE ENGINEER
 SUBMITTED BY: [Signature] REGIONAL ENGINEER
 CHECKED BY: [Signature] REG. C.E. NO. 13906

J.N. 0362.66

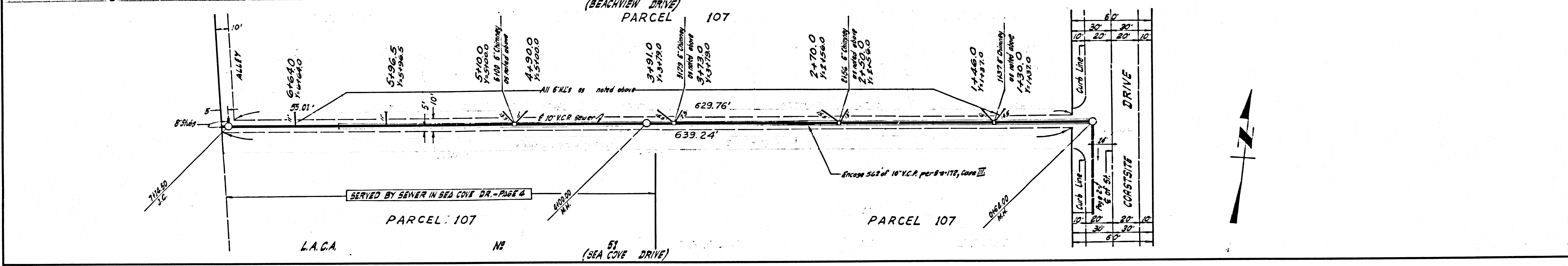
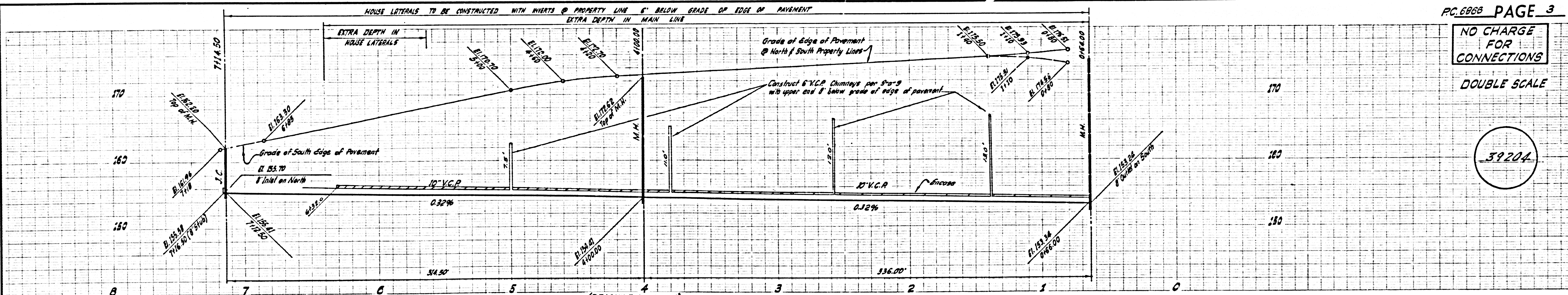


P. C. 6866 PAGE 2
 NO CHARGE FOR CONNECTIONS
 DOUBLE SCALE
 39203

NO CHARGE FOR CONNECTIONS

DOUBLE SCALE

39204



NO CHARGE FOR CONNECTIONS

DOUBLE SCALE

39205

