

B.M. SY 3513A ELEV. 56.267
 C.S. MONUMENT IN WELL AT CENTER
 LINE INTERSECTION LOMITA BLVD.
 AND WALNUT STREET.
 BASELINE QUAD. 1955

LOMITA BLDG. DIST. NO. 12

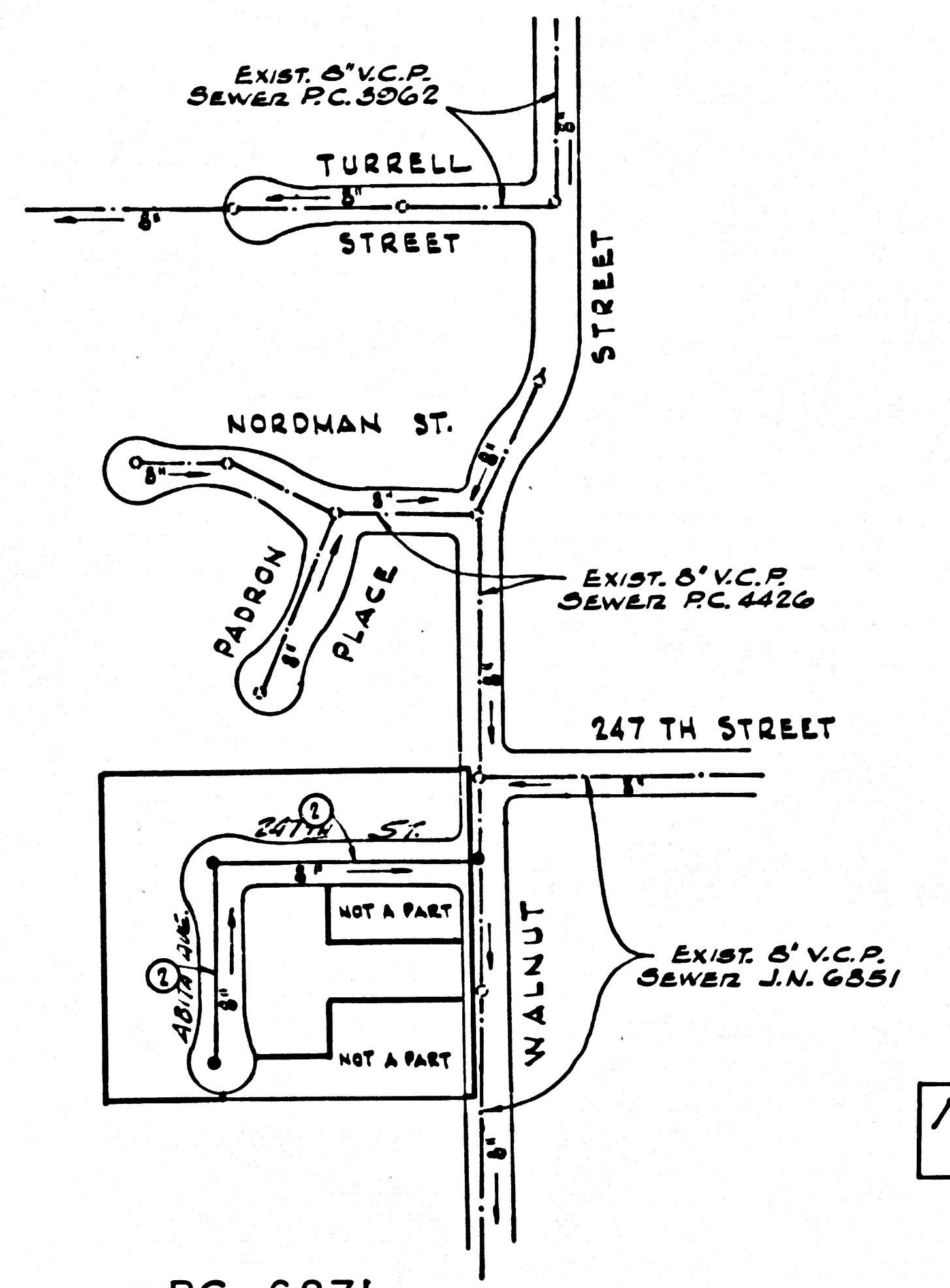
PRIVATE CONTRACT NO. 6871

W.S. 28
 1 SHEET, 2 PAGES
 SCALE: VERT. 1"=4'
 HORIZ. 1"=40'
 JANUARY, 1964
 PREPARED IN THE OFFICES OF
 GARDENA ENGINEERING CO.
 By: *Daniel Markov*
 REG. C. E. NO. 13787

34608

PRIVATE ENGINEER'S NOTICE TO CONTRACTORS
 THE EXISTENCE AND LOCATION OF ANY UNDERGROUND UTILITY
 PIPES OR STRUCTURES SHOWN ON THESE PLANS ARE OBTAINED BY
 A SEARCH OF AVAILABLE RECORDS. TO THE BEST OF MY KNOWLEDGE
 THERE ARE NO EXISTING UTILITIES EXCEPT AS SHOWN ON THESE PLANS.
 THE CONTRACTOR IS REQUIRED TO TAKE DUE PRECAUTIONARY
 MEASURES TO PROTECT THE UTILITY LINES SHOWN AND OR ANY
 OTHER LINES OF RECORD OR NOT SHOWN ON THESE PLANS.

GARDENA ENGINEERING COMPANY INC.
 BY: *Daniel Markov*
 DANIEL MARKOV R.C.E. 13787



P.C. 6871
 INDEX MAP
 SCALE: 1"=200'

ISSUE NO HOUSE CONNECTION PERMITS
 UNTIL P.C. 6851 IS ACCEPTED

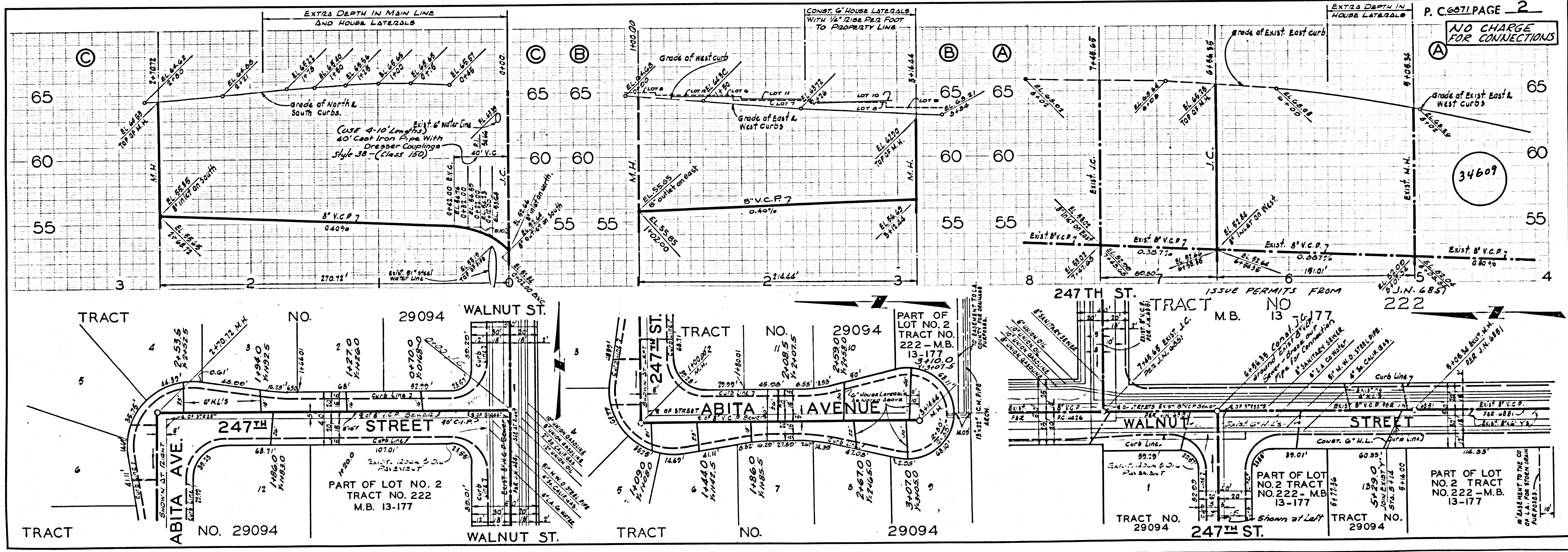
COLLECT CHARGES
 AS INDICATED

NO CONNECTIONS FOR THE DISPOSAL OF
 INDUSTRIAL WASTES SHALL BE MADE TO
 SEWERS SHOWN ON THESE DRAWINGS
 WITHOUT WRITTEN PERMISSION FROM THE
 CHIEF ENGINEER AND GENERAL MANAGER
 OF THE COUNTY SANITATION DISTRICTS.

NOTE:
 GRADES TO WHICH THIS IMPROVEMENT IS TO BE CONSTRUCTED ARE SHOWN ON PLANS AND PROFILES. GRADE POINTS FOR TOP OF
 CURBS, CENTER LINE OF STREETS, OR CENTER LINE OF ALLEYS ARE SHOWN BY CIRCLES ON PROFILES. AT ALL POINTS BETWEEN DESIGNATED
 POINTS THE GRADE SHALL BE ESTABLISHED SO AS TO CONFORM TO A STRAIGHT LINE DRAWN BETWEEN SAID DESIGNATED POINTS.
 ELEVATIONS ARE IN FEET ABOVE U.S.C. & G.S. SEA LEVEL DATUM OF 1929.
 THIS DRAWING AND THE DATA HEREON ARE HEREBY MADE A PART OF THE SPECIFICATIONS.
 WORK SHALL BE CONSTRUCTED ACCORDING TO STANDARD SPECIFICATIONS DATED MAY 28, 1962, ON FILE IN THE OFFICE OF THE
 COUNTY ENGINEER AND SHALL BE PROSECUTED ONLY IN THE PRESENCE OF THE COUNTY ENGINEER.
 BEFORE WORK CAN BE STARTED, THE CONTRACTOR MUST OBTAIN A PERMIT TO EXCAVATE IN COUNTY STREETS FROM THE L.A. COUNTY
 ROAD DEPT., DISTRICT OFFICE NO. 2, AND PAY A FEE TO THE COUNTY ENGINEER, ROOM 380, COUNTY ENGINEERING BUILDING,
 108 WEST SECOND STREET OR PHONE 468-8700 - 6471 (MAYBE). REGIONAL OFFICE, SUFFICIENT TO COVER THE COST OF
 CONSTRUCTION INSPECTION AND RECORD PLANS.
 APPROVAL OF THIS PLAN BY THE COUNTY OF LOS ANGELES DOES NOT CONSTITUTE A REPRESENTATION AS TO THE ACCURACY OF THE
 LOCATION OF OR THE EXISTENCE OR NON-EXISTENCE OF ANY UNDERGROUND UTILITY PIPE, OR STRUCTURE WITHIN THE LIMITS OF THIS
 PROJECT. THIS NOTE APPLIES TO ALL PAGES.
 IF WORK IS TO BE DONE IN A STATE HIGHWAY, A PERMIT MUST BE OBTAINED FROM THE STATE OF CALIFORNIA, DIVISION OF HIGHWAYS,
 720 SOUTH SPRING STREET, LOS ANGELES, CALIFORNIA.

COUNTY OF LOS ANGELES, CALIFORNIA
 JOHN A. LAMBIE, COUNTY ENGINEER J. D. PARKHURST, CHIEF ENGINEER
 CO. SANIT. DIST. NO. 12
 APPROVED BY: *Ralph Schaffer* ASSISTANT SANITATION ENGINEER APPROVED BY: *J. D. Parkhurst* CHIEF ENGINEER
 SUBMITTED BY: *Jack C. Schaefer* REGIONAL ENGINEER
 CHECKED BY: *Ralph Schaffer* REG. C. E. NO. 13906

J. N. 0362.49



P. C. 6871 PAGE 2
 NO CHARGE
 FOR CONNECTIONS

34609