

B.M. 3Y 3847 ELEV. 40.803
 L & T. 5 Edge Conc. Drive to
 House No 70224 @ N.E. Cor Dal
 Amo Blvd & Norwalk Blvd.
 245' E of Norwalk Blvd
 Artesia QUAD. 19.55

LAKEWOOD BLDG. DIST. NO. 4.3

PROFILE ALIGNMENT AND GRADE OF P.C. 6875
 SANITARY SEWERS PAGE 1
 TO BE CONSTRUCTED IN

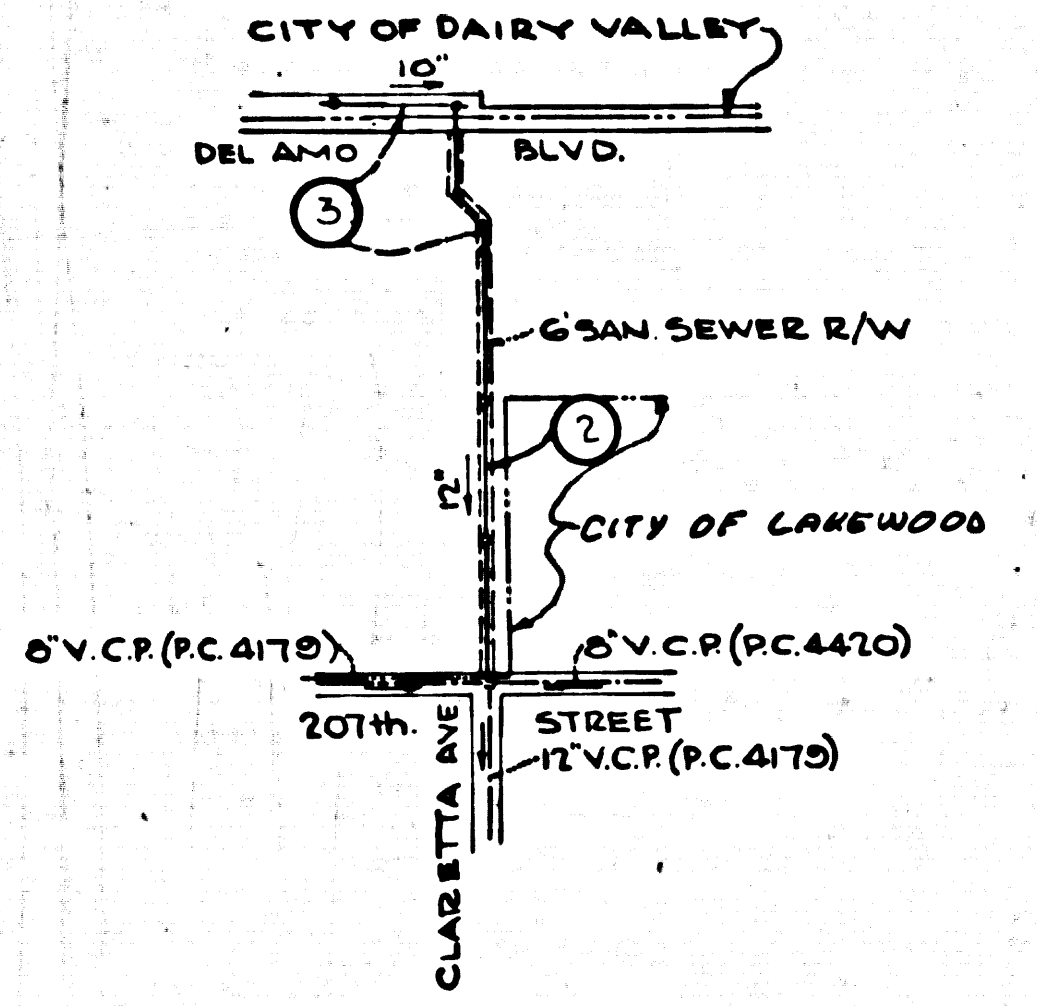
DEL AMO SCHOOL
 PRIVATE CONTRACT NO. 6875

W.S. 31
 2 SHEETS, 3 PAGES
 SCALE: VERT. 1"=4' HORIZ. 1"=40'
 JANUARY, 1964
 PREPARED IN THE OFFICES OF
 BOLE AND WILSON
 730 E. 3rd STREET
 LONG BEACH, CALIF.
 REG. C. E. NO. 5283
 FOR LEGEND SEE PLAN NO. S-1

36745

- NOTES:
1. PROVIDE STAKES ON THE PROPERTY LINE OR PROPERTY LINES PRODUCED AT RIGHT ANGLES TO THE SEWER LINE AT THE CENTER LINE OF EACH MANHOLE.
 2. NO REPRESENTATIVE OF THE COUNTY ENGINEER WILL SURVEY OR LAY OUT ANY PORTION OF THE WORK.
 3. THE PRIVATE ENGINEER SHALL FURNISH THE COUNTY ENGINEER WITH GRADE SHEETS AND STATIONING FOR ALL HOUSE LATERALS AND Y BRANCHES AND SHALL PROVIDE STAKES FOR THEM AT THEIR PROPER LOCATIONS WITH STATIONING PLAINLY MARKED. ALL HOUSE LATERALS SHALL BE CONSTRUCTED IN A STRAIGHT ALIGNMENT AT RIGHT ANGLES FROM THE MAIN LINE SEWER EXCEPT AS SHOWN ON THE PLANS. HOUSE LATERALS FROM CHIMNEYS SHALL NOT HAVE AN ANGLE OF LESS THAN 45° WITH THE MAIN LINE SEWER. ANY CHANGE IN ALIGNMENT SHALL BE REQUESTED IN WRITING BY THE PRIVATE ENGINEER.
 4. THE PRIVATE ENGINEER SHALL FURNISH THE HOUSE LATERAL DEPTH AT THE PROPERTY LINE BELOW THE TOP OF CURB ELEVATION FOR EACH HOUSE LATERAL ON THE GRADE SHEET.
 5. NO REVISIONS SHALL BE MADE IN THESE PLANS WITHOUT THE APPROVAL OF THE COUNTY ENGINEER.
 6. THE CONTRACTOR SHALL NOTIFY THE CONSTRUCTION DIVISION BY TELEPHONE, MADISON 9-4747, EXT. 8158, AT LEAST TWENTY-FOUR HOURS BEFORE STARTING ANY WORK UNDER THIS CONTRACT.
 7. MANHOLES SHALL BE BRICK SEWER STRUCTURES PER S-2. PRECAST CONCRETE MANHOLES PER S-5, S-6, S-7, S-8, S-9, S-10, S-11, S-12, S-13, S-14, S-15, S-16, S-17, S-18, S-19, S-20, S-21, S-22, S-23, S-24, S-25, S-26, S-27, S-28, S-29, S-30, S-31, S-32, S-33, S-34, S-35, S-36, S-37, S-38, S-39, S-40, S-41, S-42, S-43, S-44, S-45, S-46, S-47, S-48, S-49, S-50, S-51, S-52, S-53, S-54, S-55, S-56, S-57, S-58, S-59, S-60, S-61, S-62, S-63, S-64, S-65, S-66, S-67, S-68, S-69, S-70, S-71, S-72, S-73, S-74, S-75, S-76, S-77, S-78, S-79, S-80, S-81, S-82, S-83, S-84, S-85, S-86, S-87, S-88, S-89, S-90, S-91, S-92, S-93, S-94, S-95, S-96, S-97, S-98, S-99, S-100, S-101, S-102, S-103, S-104, S-105, S-106, S-107, S-108, S-109, S-110, S-111, S-112, S-113, S-114, S-115, S-116, S-117, S-118, S-119, S-120, S-121, S-122, S-123, S-124, S-125, S-126, S-127, S-128, S-129, S-130, S-131, S-132, S-133, S-134, S-135, S-136, S-137, S-138, S-139, S-140, S-141, S-142, S-143, S-144, S-145, S-146, S-147, S-148, S-149, S-150, S-151, S-152, S-153, S-154, S-155, S-156, S-157, S-158, S-159, S-160, S-161, S-162, S-163, S-164, S-165, S-166, S-167, S-168, S-169, S-170, S-171, S-172, S-173, S-174, S-175, S-176, S-177, S-178, S-179, S-180, S-181, S-182, S-183, S-184, S-185, S-186, S-187, S-188, S-189, S-190, S-191, S-192, S-193, S-194, S-195, S-196, S-197, S-198, S-199, S-200, S-201, S-202, S-203, S-204, S-205, S-206, S-207, S-208, S-209, S-210, S-211, S-212, S-213, S-214, S-215, S-216, S-217, S-218, S-219, S-220, S-221, S-222, S-223, S-224, S-225, S-226, S-227, S-228, S-229, S-230, S-231, S-232, S-233, S-234, S-235, S-236, S-237, S-238, S-239, S-240, S-241, S-242, S-243, S-244, S-245, S-246, S-247, S-248, S-249, S-250, S-251, S-252, S-253, S-254, S-255, S-256, S-257, S-258, S-259, S-260, S-261, S-262, S-263, S-264, S-265, S-266, S-267, S-268, S-269, S-270, S-271, S-272, S-273, S-274, S-275, S-276, S-277, S-278, S-279, S-280, S-281, S-282, S-283, S-284, S-285, S-286, S-287, S-288, S-289, S-290, S-291, S-292, S-293, S-294, S-295, S-296, S-297, S-298, S-299, S-300, S-301, S-302, S-303, S-304, S-305, S-306, S-307, S-308, S-309, S-310, S-311, S-312, S-313, S-314, S-315, S-316, S-317, S-318, S-319, S-320, S-321, S-322, S-323, S-324, S-325, S-326, S-327, S-328, S-329, S-330, S-331, S-332, S-333, S-334, S-335, S-336, S-337, S-338, S-339, S-340, S-341, S-342, S-343, S-344, S-345, S-346, S-347, S-348, S-349, S-350, S-351, S-352, S-353, S-354, S-355, S-356, S-357, S-358, S-359, S-360, S-361, S-362, S-363, S-364, S-365, S-366, S-367, S-368, S-369, S-370, S-371, S-372, S-373, S-374, S-375, S-376, S-377, S-378, S-379, S-380, S-381, S-382, S-383, S-384, S-385, S-386, S-387, S-388, S-389, S-390, S-391, S-392, S-393, S-394, S-395, S-396, S-397, S-398, S-399, S-400, S-401, S-402, S-403, S-404, S-405, S-406, S-407, S-408, S-409, S-410, S-411, S-412, S-413, S-414, S-415, S-416, S-417, S-418, S-419, S-420, S-421, S-422, S-423, S-424, S-425, S-426, S-427, S-428, S-429, S-430, S-431, S-432, S-433, S-434, S-435, S-436, S-437, S-438, S-439, S-440, S-441, S-442, S-443, S-444, S-445, S-446, S-447, S-448, S-449, S-450, S-451, S-452, S-453, S-454, S-455, S-456, S-457, S-458, S-459, S-460, S-461, S-462, S-463, S-464, S-465, S-466, S-467, S-468, S-469, S-470, S-471, S-472, S-473, S-474, S-475, S-476, S-477, S-478, S-479, S-480, S-481, S-482, S-483, S-484, S-485, S-486, S-487, S-488, S-489, S-490, S-491, S-492, S-493, S-494, S-495, S-496, S-497, S-498, S-499, S-500, S-501, S-502, S-503, S-504, S-505, S-506, S-507, S-508, S-509, S-510, S-511, S-512, S-513, S-514, S-515, S-516, S-517, S-518, S-519, S-520, S-521, S-522, S-523, S-524, S-525, S-526, S-527, S-528, S-529, S-530, S-531, S-532, S-533, S-534, S-535, S-536, S-537, S-538, S-539, S-540, S-541, S-542, S-543, S-544, S-545, S-546, S-547, S-548, S-549, S-550, S-551, S-552, S-553, S-554, S-555, S-556, S-557, S-558, S-559, S-560, S-561, S-562, S-563, S-564, S-565, S-566, S-567, S-568, S-569, S-570, S-571, S-572, S-573, S-574, S-575, S-576, S-577, S-578, S-579, S-580, S-581, S-582, S-583, S-584, S-585, S-586, S-587, S-588, S-589, S-590, S-591, S-592, S-593, S-594, S-595, S-596, S-597, S-598, S-599, S-600, S-601, S-602, S-603, S-604, S-605, S-606, S-607, S-608, S-609, S-610, S-611, S-612, S-613, S-614, S-615, S-616, S-617, S-618, S-619, S-620, S-621, S-622, S-623, S-624, S-625, S-626, S-627, S-628, S-629, S-630, S-631, S-632, S-633, S-634, S-635, S-636, S-637, S-638, S-639, S-640, S-641, S-642, S-643, S-644, S-645, S-646, S-647, S-648, S-649, S-650, S-651, S-652, S-653, S-654, S-655, S-656, S-657, S-658, S-659, S-660, S-661, S-662, S-663, S-664, S-665, S-666, S-667, S-668, S-669, S-670, S-671, S-672, S-673, S-674, S-675, S-676, S-677, S-678, S-679, S-680, S-681, S-682, S-683, S-684, S-685, S-686, S-687, S-688, S-689, S-690, S-691, S-692, S-693, S-694, S-695, S-696, S-697, S-698, S-699, S-700, S-701, S-702, S-703, S-704, S-705, S-706, S-707, S-708, S-709, S-710, S-711, S-712, S-713, S-714, S-715, S-716, S-717, S-718, S-719, S-720, S-721, S-722, S-723, S-724, S-725, S-726, S-727, S-728, S-729, S-730, S-731, S-732, S-733, S-734, S-735, S-736, S-737, S-738, S-739, S-740, S-741, S-742, S-743, S-744, S-745, S-746, S-747, S-748, S-749, S-750, S-751, S-752, S-753, S-754, S-755, S-756, S-757, S-758, S-759, S-760, S-761, S-762, S-763, S-764, S-765, S-766, S-767, S-768, S-769, S-770, S-771, S-772, S-773, S-774, S-775, S-776, S-777, S-778, S-779, S-780, S-781, S-782, S-783, S-784, S-785, S-786, S-787, S-788, S-789, S-790, S-791, S-792, S-793, S-794, S-795, S-796, S-797, S-798, S-799, S-800, S-801, S-802, S-803, S-804, S-805, S-806, S-807, S-808, S-809, S-810, S-811, S-812, S-813, S-814, S-815, S-816, S-817, S-818, S-819, S-820, S-821, S-822, S-823, S-824, S-825, S-826, S-827, S-828, S-829, S-830, S-831, S-832, S-833, S-834, S-835, S-836, S-837, S-838, S-839, S-840, S-841, S-842, S-843, S-844, S-845, S-846, S-847, S-848, S-849, S-850, S-851, S-852, S-853, S-854, S-855, S-856, S-857, S-858, S-859, S-860, S-861, S-862, S-863, S-864, S-865, S-866, S-867, S-868, S-869, S-870, S-871, S-872, S-873, S-874, S-875, S-876, S-877, S-878, S-879, S-880, S-881, S-882, S-883, S-884, S-885, S-886, S-887, S-888, S-889, S-890, S-891, S-892, S-893, S-894, S-895, S-896, S-897, S-898, S-899, S-900, S-901, S-902, S-903, S-904, S-905, S-906, S-907, S-908, S-909, S-910, S-911, S-912, S-913, S-914, S-915, S-916, S-917, S-918, S-919, S-920, S-921, S-922, S-923, S-924, S-925, S-926, S-927, S-928, S-929, S-930, S-931, S-932, S-933, S-934, S-935, S-936, S-937, S-938, S-939, S-940, S-941, S-942, S-943, S-944, S-945, S-946, S-947, S-948, S-949, S-950, S-951, S-952, S-953, S-954, S-955, S-956, S-957, S-958, S-959, S-960, S-961, S-962, S-963, S-964, S-965, S-966, S-967, S-968, S-969, S-970, S-971, S-972, S-973, S-974, S-975, S-976, S-977, S-978, S-979, S-980, S-981, S-982, S-983, S-984, S-985, S-986, S-987, S-988, S-989, S-990, S-991, S-992, S-993, S-994, S-995, S-996, S-997, S-998, S-999, S-1000.
 8. USE STANDARD MANHOLE FRAMES AND COVERS, S-15, EXCEPT AS NOTED.
 9. MANHOLE TOPS IN UNIMPROVED RIGHTS-OF-WAY TO BE SIX INCHES ABOVE FINISHED GRADE.
 10. USE EXTRA STRENGTH PIPE, ALL PIPE IS STANDARD DEPTH EXCEPT AS NOTED.
 11. USE MECHANICAL COMPRESSION JOINTS FOR ALL V.C.P. JOINTS PER SPECS. SECS. 24, 41 & 49.
 12. WHENEVER GROUND WATER IS ENCOUNTERED DURING THE CONSTRUCTION OF THE SEWERS, THE V.C.P. JOINTS SHALL BE OF JOINT COMPOUND PER SPECS. SECS. 23 & 40, OR MECHANICAL COMPRESSION JOINTS PER SPECS. SEC. 24.
 13. IF A POWER POLE IS WITHIN THREE FEET OF THE SEWER, THE SEWER SHALL BE ENCASED, PER S-23, TWO FEET ON EITHER SIDE FROM THE POINT OF INTERFERENCE.
 14. IF DURING THE COURSE OF CONSTRUCTION IT IS DETERMINED THAT THERE IS LESS THAN FOUR FEET OF COVER OVER THE TOP OF A MAIN LINE OR HOUSE LATERAL V.C.P. SEWER WHICH IS NOT INDICATED ON THE PLANS, THE PIPE SHALL BE ENCASED PER S-23 UNLESS OTHERWISE APPROVED BY THE COUNTY ENGINEER.
 15. HOUSE LATERALS TO BE CONSTRUCTED WITH INVERTS AT LEAST ONE FOOT BELOW THE PROPERTY LINE.
 16. RESURFACE ALL TRENCHES WITHIN PAVED AREAS TO MEET L.A. COUNTY ROAD DEPT. OR CALIFORNIA STATE HIGHWAY REQUIREMENTS IN ACCORDANCE WITH PERMITS.
 17. FOR ALLOWABLE LEAKAGE TEST USE FORMULA NO. 2, SPECS. SEC. 54.
 18. ALL STATE AND LOCAL TRENCH SAFETY ORDERS WILL BE RIGIDLY ENFORCED.

ISSUE NO CONNECTION PERMITS
 UNTIL ALL R/W'S HAVE BEEN
 ACQUIRED



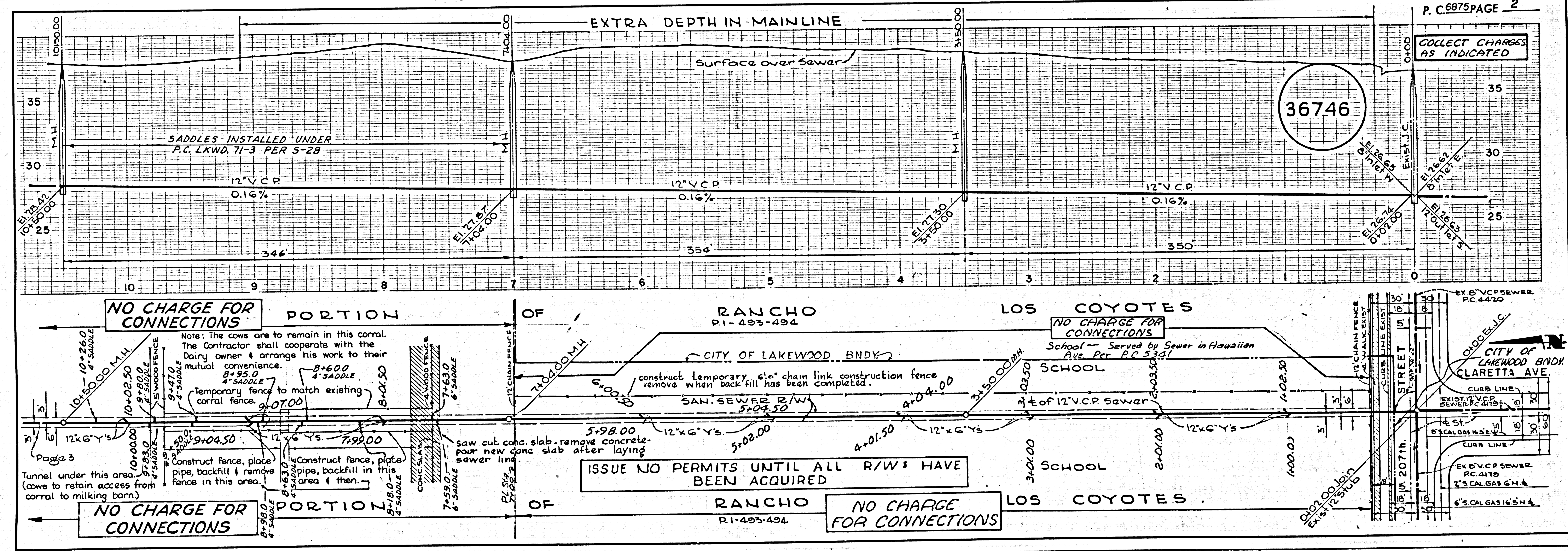
INDEX MAP
 SCALE - 1"=600'
 P.C.6875

APPROVED BY: *Robert A. Moore*
 INDUSTRIAL WASTE DIVISION

COLLECT CHARGES
 AS INDICATED
William M. McCall

COUNTY OF LOS ANGELES, CALIFORNIA
 JOHN A. LAMBIE, COUNTY ENGINEER
 J. D. PARKHURST, CHIEF ENGINEER
 APPROVED BY: *John A. Lambie*
 ASSISTANT SANITATION ENGINEER
 APPROVED BY: *J. D. Parkhurst*
 CHIEF ENGINEER
 SUBMITTED BY: *John A. Lambie*
 LOS ANGELES REGIONAL ENGINEER, R.C.E. No. 3871
 CHECKED BY: *John A. Lambie*
 REG. C.E. NO. 18782

J.N. 0362.51



NO CHARGE FOR CONNECTIONS

Note: The cows are to remain in this corral. The Contractor shall cooperate with the Dairy owner & arrange his work to their mutual convenience.
 Temporary fence to match existing corral fence.
 Construct fence, place pipe, backfill & remove fence in this area.

ISSUE NO PERMITS UNTIL ALL R/W'S HAVE BEEN ACQUIRED

NO CHARGE FOR CONNECTIONS

COLLECT CHARGES AS INDICATED

36746

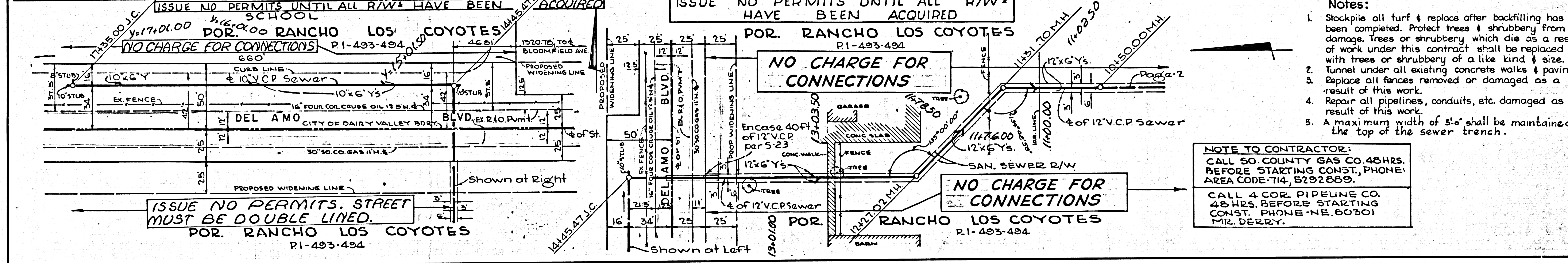
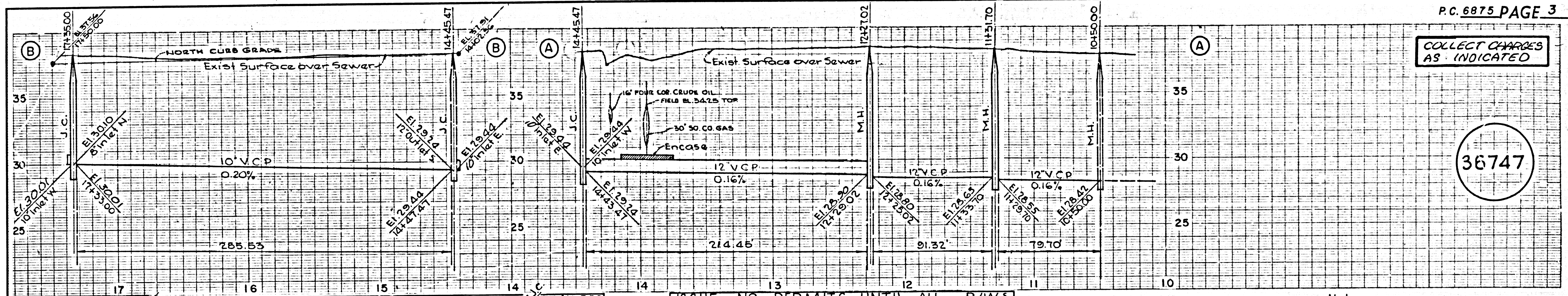
MAE 17113 L.A. COUNTY SEWER SHEET NO. 1 SOUTHERN CALIFORNIA BLUEPRINT CO. LA 6111

PC 6875

DEL AMO SCHOOL

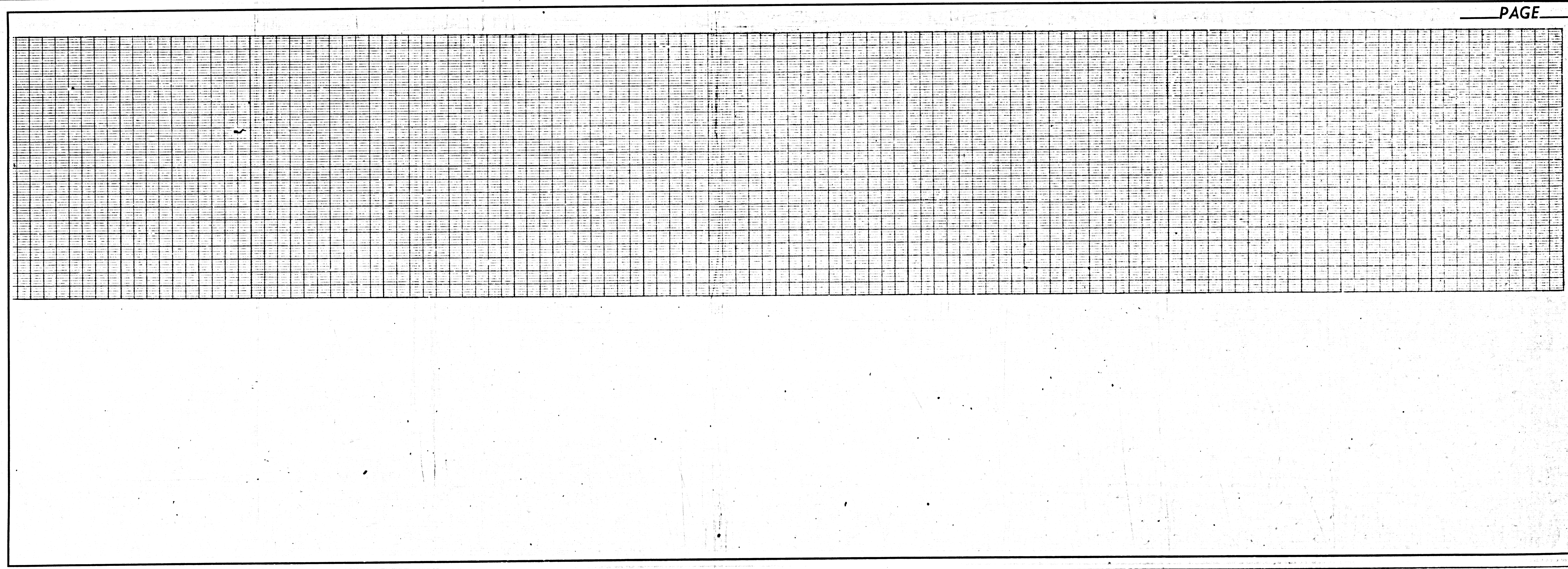
COLLECT CHARGES AS INDICATED

36747



- Notes:
1. Stockpile all turf & replace after backfilling has been completed. Protect trees & shrubbery from damage. Trees or shrubbery which die as a result of work under this contract shall be replaced with trees or shrubbery of a like kind & size.
 2. Tunnel under all existing concrete walks & paving.
 3. Replace all fences removed or damaged as a result of this work.
 4. Repair all pipelines, conduits, etc. damaged as a result of this work.
 5. A maximum width of 5'-0" shall be maintained at the top of the sewer trench.

NOTE TO CONTRACTOR:
 CALL SO. COUNTY GAS CO. 48 HRS. BEFORE STARTING CONST. PHONE: AREA CODE 714, 5292889.
 CALL 4 COR. PIPELINE CO. 48 HRS. BEFORE STARTING CONST. PHONE NE. 60301 MR. DERRY.



DEF. AMO SCHOOL bc e 812 JOOHS OMA -130