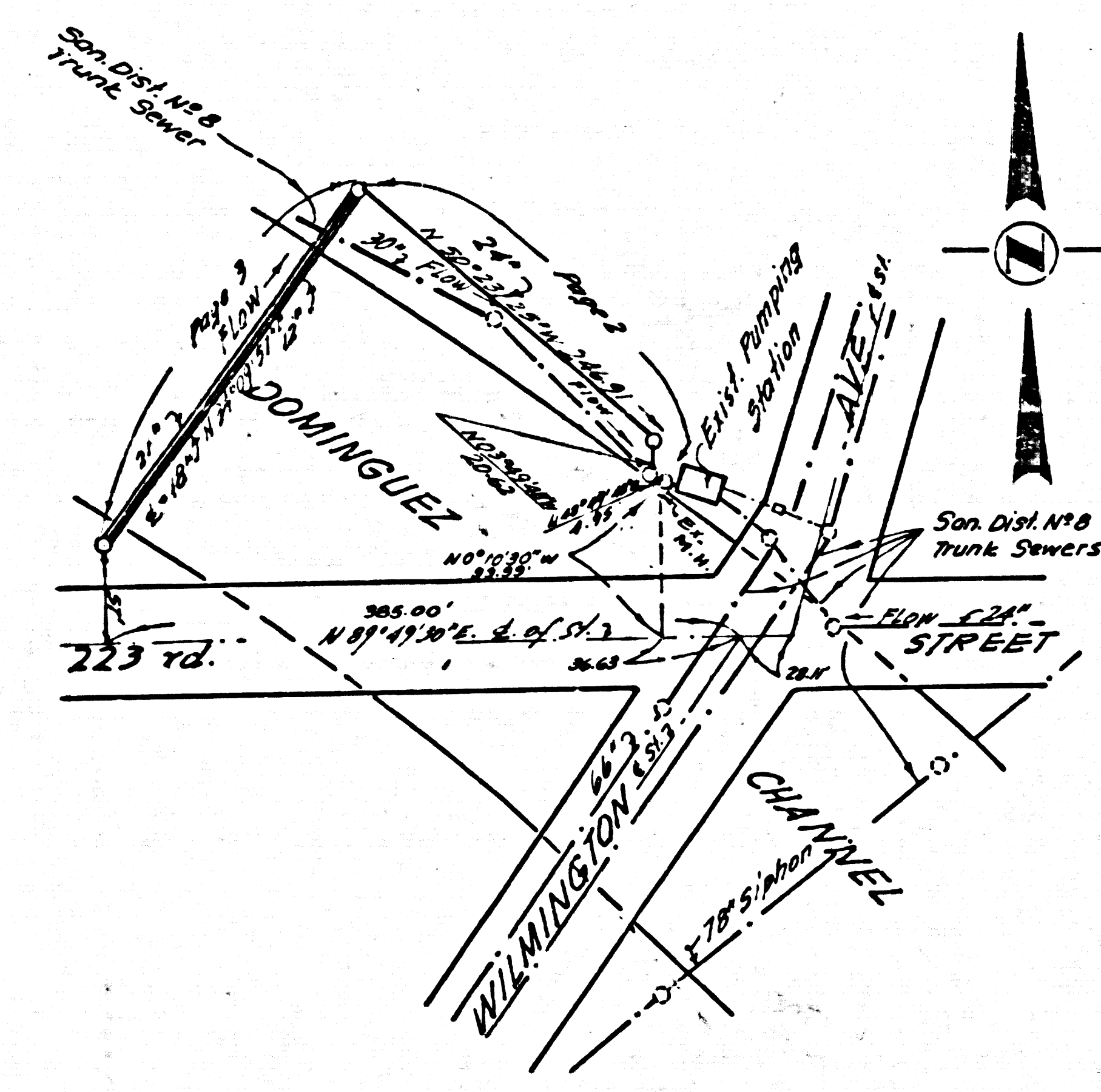
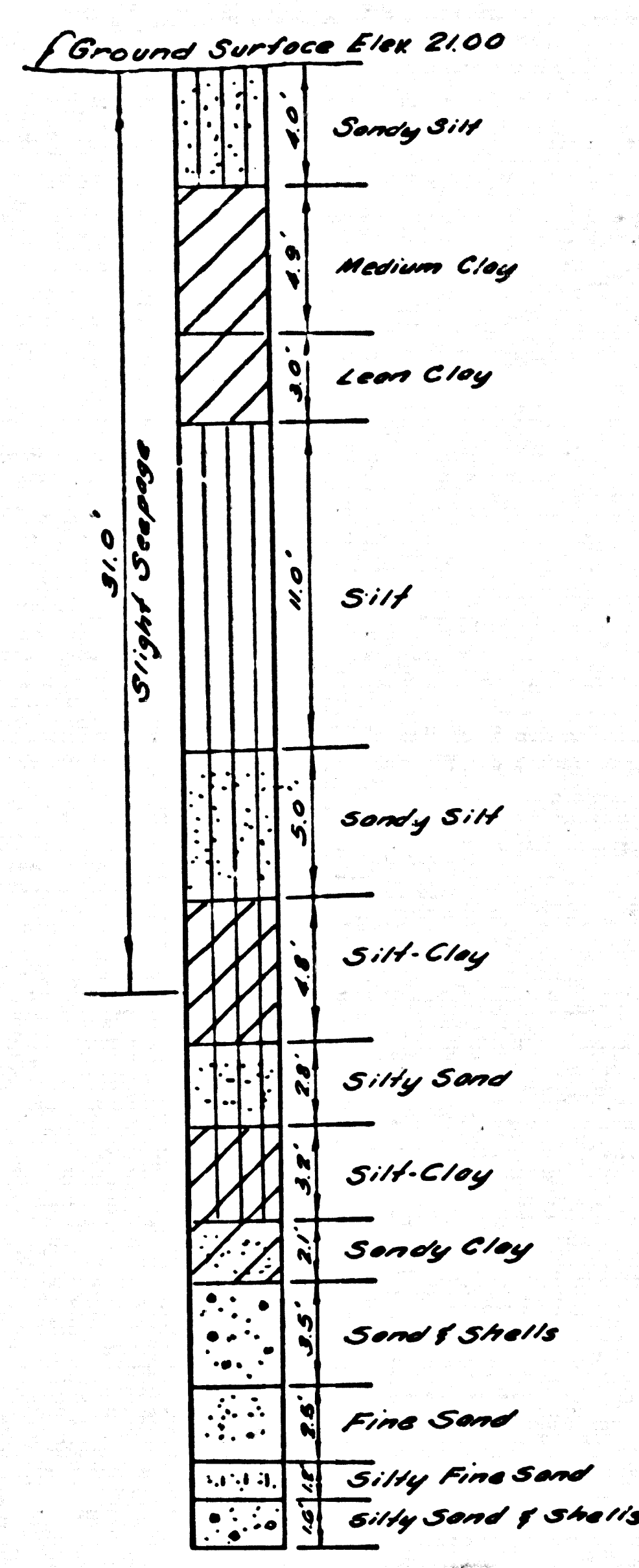


B.M. SK 3979-A ELEV 24.375 FC. 24.015
 F.O. Br. Cap in Wall, 2" dia. (max 2")
 on N. Line Edison, Sub Sta. 2 No. 15
 Wilmington Ave & 223rd St. 223rd St.
 252.2' P.M.C. M.D. CO. B.M. W-101A 1961
 Gardena QUAD. 19 40



P.C. 6876
 INDEX MAP
 SCALE: 1"=100'



TEST HOLE
 Siphon M.H. on South
 See Report on File
 Donald R. Warren Co.
 February, 1964

LOMITA BLDG. DIST. NO. 12

TO BE CONSTRUCTED IN
DOMINGUEZ CHANNEL
 NORTHWESTERLY-WILMINGTON AVENUE & 223rd STREET
 PRIVATE CONTRACT NO. 6876

W.S. 28
 3 SHEETS, 4 PAGES
 SCALE: VERT. 1"=8' HORIZ. 1"=20'
 FEBRUARY, 1964

PREPARED BY THE OFFICES OF
WILLIAM J. MORAN CO. ENGINEERS
 ALHAMBRA, CALIFORNIA
 By Robert A. Eldridge
 ROBERT A. ELDRIDGE REG. C.E. NO. 2882

FOR LEGEND SEE PLAN NO. S-664

- NOTE:
- PROVIDE STAKES ON THE PROPERTY LINE OR PROPERTY LINES PRODUCED AT RIGHT ANGLES TO THE SEWER LINE AT THE CENTER LINE OF EACH MANHOLE.
 - NO REPRESENTATIVE OF THE COUNTY ENGINEER WILL SURVEY OR LAY OUT ANY PORTION OF THE WORK.
 - THE PRIVATE ENGINEER SHALL FURNISH THE COUNTY ENGINEER WITH GRADE SHEETS AND STATIONING FOR ALL HOUSE LATERALS AND Y BRANCHES AND SHALL PROVIDE STAKES FOR THEM AT THEIR PROPER LOCATIONS WITH STATIONING PLAINLY MARKED. ALL HOUSE LATERALS SHALL BE CONSTRUCTED IN A STRAIGHT ALIGNMENT AT RIGHT ANGLES FROM THE MAIN LINE SEWER EXCEPT AS SHOWN ON THE PLANS. HOUSE LATERALS FROM CHIMNEYS SHALL NOT HAVE AN ANGLE OF LESS THAN 45° WITH THE MAIN LINE SEWER. ANY CHANGE IN ALIGNMENT SHALL BE REQUESTED IN WRITING BY THE PRIVATE ENGINEER.
 - THE PRIVATE ENGINEER SHALL FURNISH THE HOUSE LATERAL DEPTH AT THE PROPERTY LINE BELOW THE TOP OF CURB ELEVATION FOR EACH HOUSE LATERAL ON THE GRADE SHEET.
 - NO REVISIONS SHALL BE MADE IN THESE PLANS WITHOUT THE APPROVAL OF THE COUNTY ENGINEER.
 - THE CONTRACTOR SHALL NOTIFY THE CONSTRUCTION DIVISION BY TELEPHONE, MADISON 9-4747, EXT. 8153, AT LEAST TWENTY-FOUR HOURS BEFORE STARTING ANY WORK UNDER THIS CONTRACT.
 - MANHOLES SHALL BE BRICK SEWER STRUCTURES PER S-6-104. PRECAST CONCRETE MANHOLES PER S-6-135 OR S-6-173 MAY BE USED AS AN ALTERNATE IN LOCATIONS APPROVED BY THE COUNTY ENGINEER. EXCEPT AS NOTED.
 - USE STANDARD MANHOLE FRAMES AND COVERS, S-6-107, EXCEPT AS NOTED.
 - USE STANDARD TOPS IN UNAPPROVED RIGHTS-OF-WAY TO BE SIX INCHES ABOVE FINISHED GRADE.
 - USE EXTRA STRENGTH PIPE. ALL PIPE IS STANDARD DEPTH EXCEPT AS NOTED.
 - USE GASKET-NUT-BAR OR MECHANICAL COMPRESSION JOINTS FOR ALL V.C.P. JOINTS PER SPECS. SECS. 34, 46, 449.
 - WHERE EVER GROUND WATER IS ENCOUNTERED DURING THE CONSTRUCTION OF THE SEWERS, THE V.C.P. JOINTS SHALL BE OF JOINT COMPOUND PER SPECS., SECS. 33 & 46, OR MECHANICAL COMPRESSION JOINTS PER SPECS., SEC. 34.
 - IF A POWER POLE IS WITHIN THREE FEET OF THE SEWER, THE SEWER SHALL BE ENCASED, PER S-172, CASE III, TWO FEET ON EACH SIDE FROM THE POINT OF INTERFERENCE.
 - IF DURING THE COURSE OF CONSTRUCTION IT IS DETERMINED THAT THERE IS LESS THAN FOUR FEET OF COVER OVER THE TOP OF A MAIN LINE OR HOUSE LATERAL V.C.P. SEWER WHICH IS NOT INDICATED ON THE PLANS, THE PIPE SHALL BE ENCASED PER S-172, CASE III, UNLESS OTHERWISE APPROVED BY THE COUNTY ENGINEER.
 - HOUSE LATERALS TO BE CONSTRUCTED WHEN AVAILABLE AT ANOMALY LINE PER BELOW CURB GRADE EXCEPT AS NOTED.
 - RESURFACE ALL TRENCHES WITH PAVED AREAS TO MEET L.A. COUNTY ROAD DEPT. OR CALIFORNIA STATE HIGHWAY REQUIREMENTS IN ACCORDANCE WITH PERMITS.
 - FOR ALLOWABLE LEAKAGE TEST USE FORMULA NO. 2, SPECS., SEC. 84.
 - ALL STATE & LOCAL TRENCH SAFETY ORDERS WILL BE RIGIDLY ENFORCED.
 - THE CONTRACTOR SHALL COMPLY IN ALL RESPECT WITH THE CONCLUSIONS AND RECOMMENDATIONS CONTAINED IN THE SOILS REPORT PREPARED BY DONALD R. WARREN CO. NO. 64-234, DATED FEBRUARY 1964.

NO CONNECTIONS FOR THE DISPOSAL OF INDUSTRIAL WASTES SHALL BE MADE TO SEWERS SHOWN ON THESE DRAWINGS WITHOUT WRITTEN PERMISSION FROM THE CHIEF ENGINEER AND GENERAL MANAGER OF THE COUNTY SANITATION DISTRICTS.

BEFORE BREAKING INTO ANY EXISTING STRUCTURE AND BEFORE FINAL ACCEPTANCE OF THIS WORK, COUNTY SANITATION DISTRICT (DU 4-1281) SHALL BE NOTIFIED IN ORDER THAT REQUIRED INSPECTION CAN BE MADE.

COLLECT CHARGES AS INDICATED

John H. McKeown

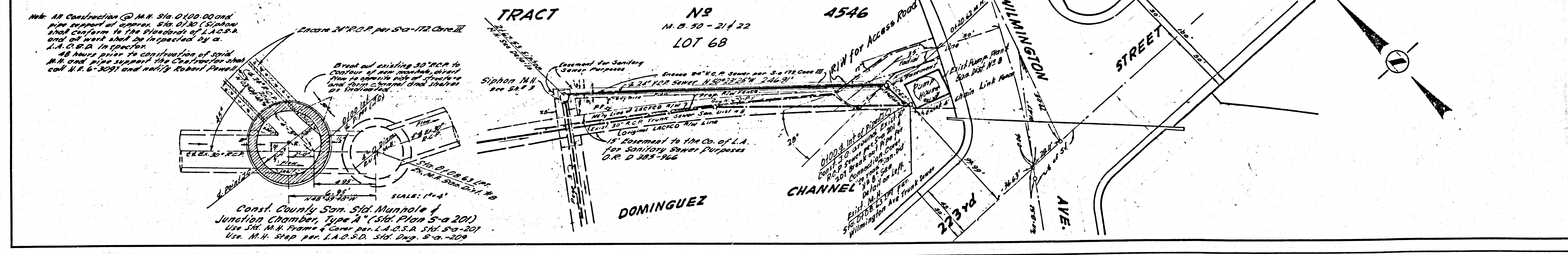
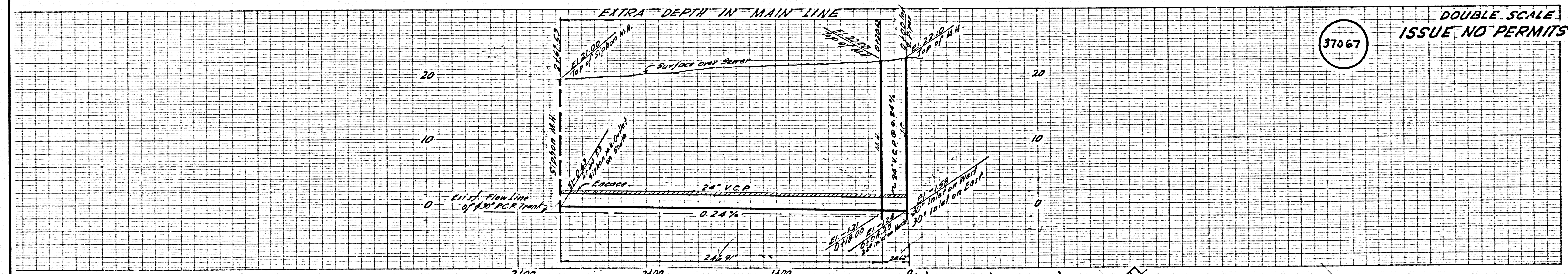
NOTE:
 GRADES TO WHICH THIS IMPROVEMENT IS TO BE CONSTRUCTED ARE SHOWN ON PLANS AND PROFILES. GRADE POINTS FOR TOP OF CURBS, CENTER LINE OF STREETS, OR CENTER LINE OF ALLEYS ARE SHOWN BY CIRCLES ON PROFILES. AT ALL POINTS BETWEEN DESIGNATED POINTS THE GRADE SHALL BE ESTABLISHED SO AS TO CONFORM TO A STRAIGHT LINE DRAWN BETWEEN SAID DESIGNATED POINTS.
 ELEVATIONS ARE IN FEET ABOVE U.S.C. & G.S. SEA LEVEL DATUM OF 1929.
 THIS DRAWING AND THE DATA HEREON ARE HEREBY MADE A PART OF THE SPECIFICATIONS.
 WORK SHALL BE CONSTRUCTED ACCORDING TO STANDARD SPECIFICATIONS DATED 1962, 22, 2662, ON FILE IN THE OFFICE OF THE COUNTY ENGINEER AND SHALL BE PROSECUTED ONLY IN THE PRESENCE OF THE COUNTY ENGINEER.
 BEFORE WORK CAN BE STARTED, THE CONTRACTOR MUST OBTAIN A PERMIT TO EXCAVATE IN COUNTY STREETS FROM THE L.A. COUNTY ROAD DEPT., DISTRICT OFFICE NO. 2, AND PAY A FEE TO THE COUNTY ENGINEER, ROOM 300, COUNTY ENGINEERING BUILDING, 100 WEST SECOND STREET OR PRIVATE OFFICE, 401 W. 11th ST., DISTRICT OFFICE, SUFFICIENT TO COVER THE COST OF CONSTRUCTION INSPECTION AND RECORD PLANS.
 APPROVAL OF THIS PLAN BY THE COUNTY OF LOS ANGELES DOES NOT CONSTITUTE A REPRESENTATION AS TO THE ACCURACY OF THE LOCATION OF OR THE EXISTENCE OR NON-EXISTENCE OF ANY UNDERGROUND UTILITY PIPE, OR STRUCTURE WITHIN THE LIMITS OF THIS PROJECT. THIS NOTE APPLIES TO ALL PAGES.
 IF WORK IS TO BE DONE IN A STATE HIGHWAY, A PERMIT MUST BE OBTAINED FROM THE STATE OF CALIFORNIA, DIVISION OF HIGHWAYS, 120 SOUTH BIRMINGHAM STREET, LOS ANGELES, CALIFORNIA.

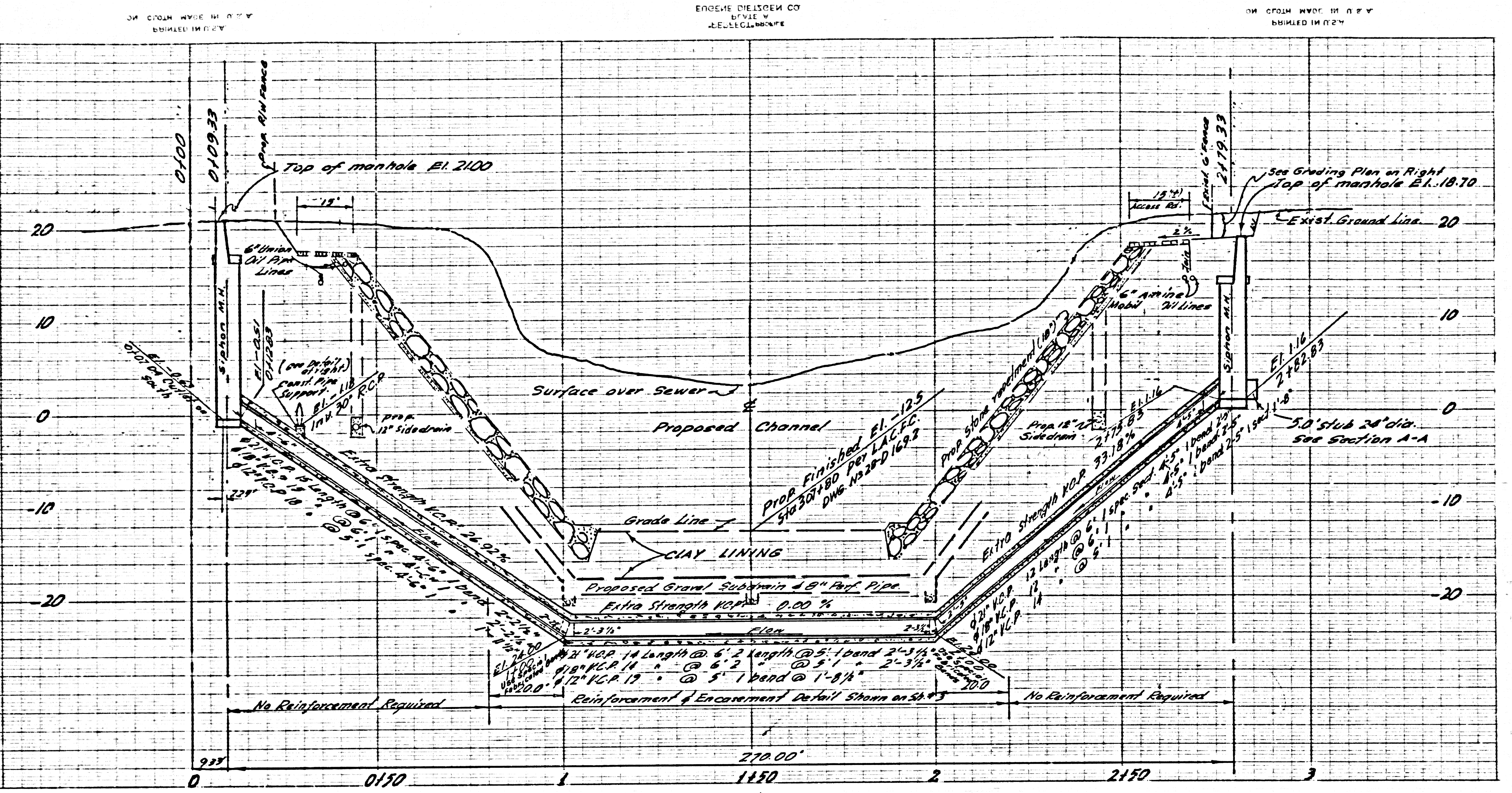
COUNTY OF LOS ANGELES, CALIFORNIA
 JOHN A. LAMBIE, COUNTY ENGINEER J. D. PARKHURST, CHIEF ENGINEER
 APPROVED BY: [Signature] ASSISTANT SANITATION ENGINEER APPROVED BY: [Signature] OFFICE ENGINEER

CHECKED BY: [Signature] S-26-64
 M.C. NO. 7406
 [Signature] SEWER MAINTENANCE Supt.

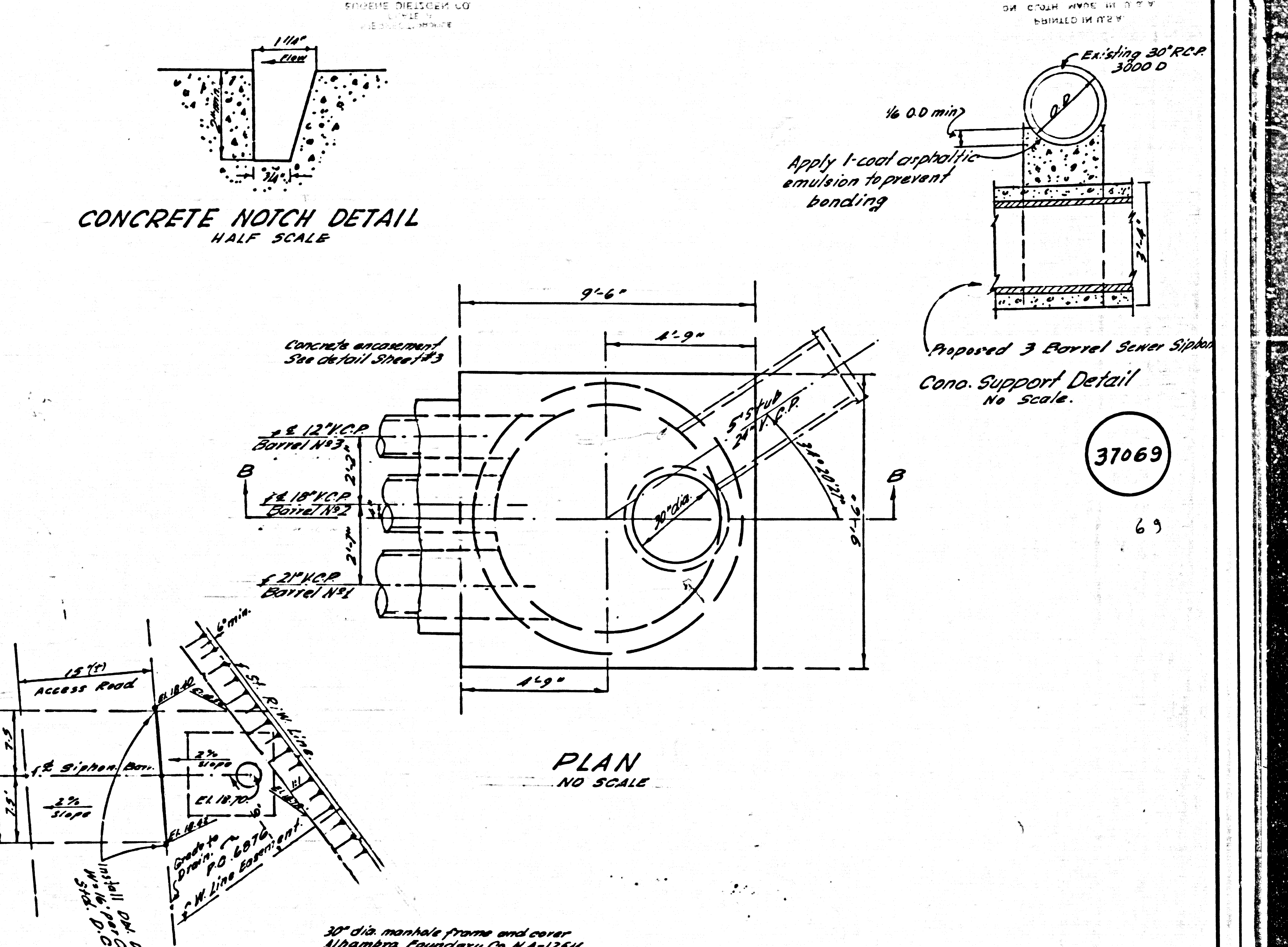
J.N. 0362.52

DOUBLE SCALE
 ISSUE NO PERMITS

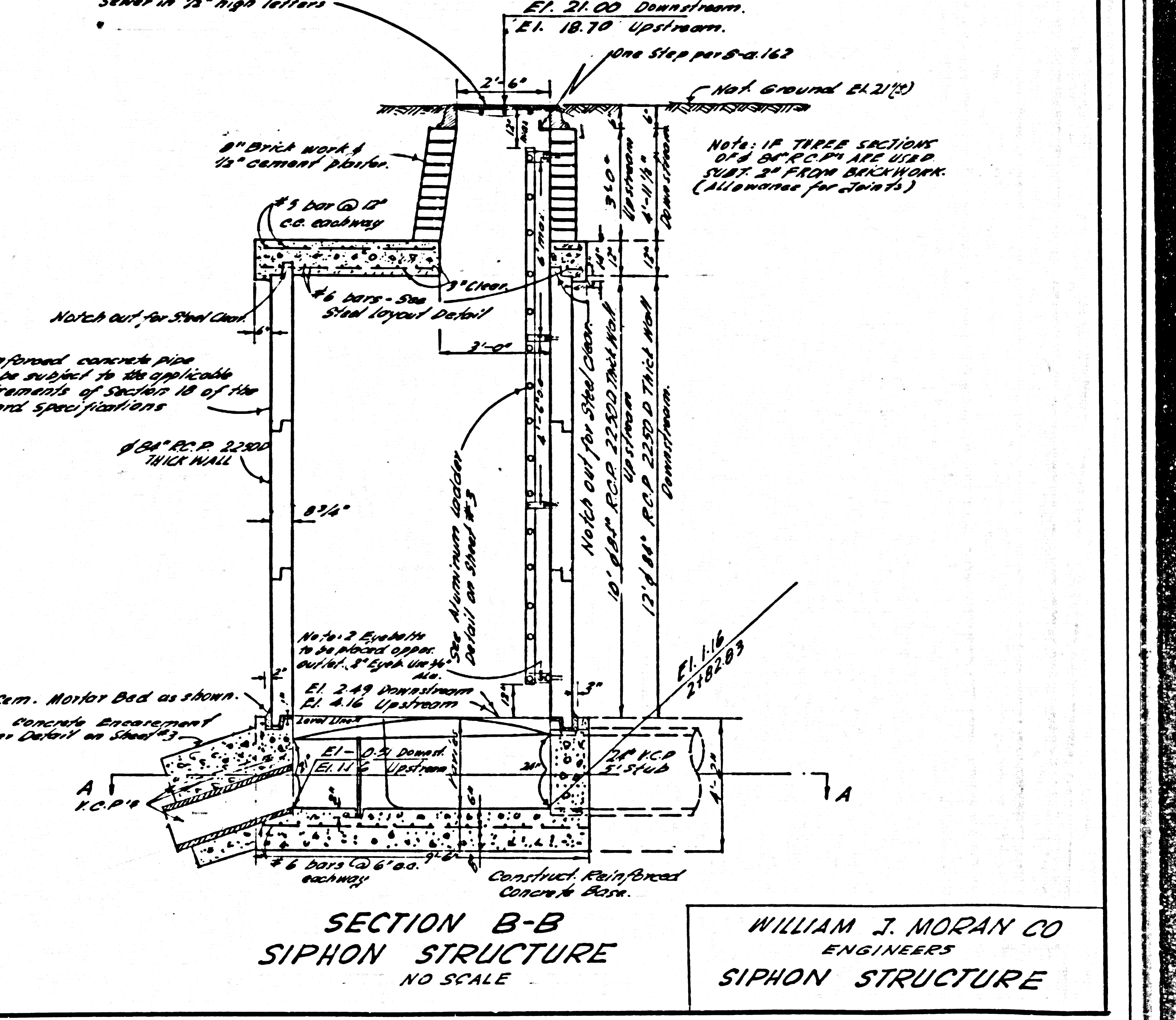
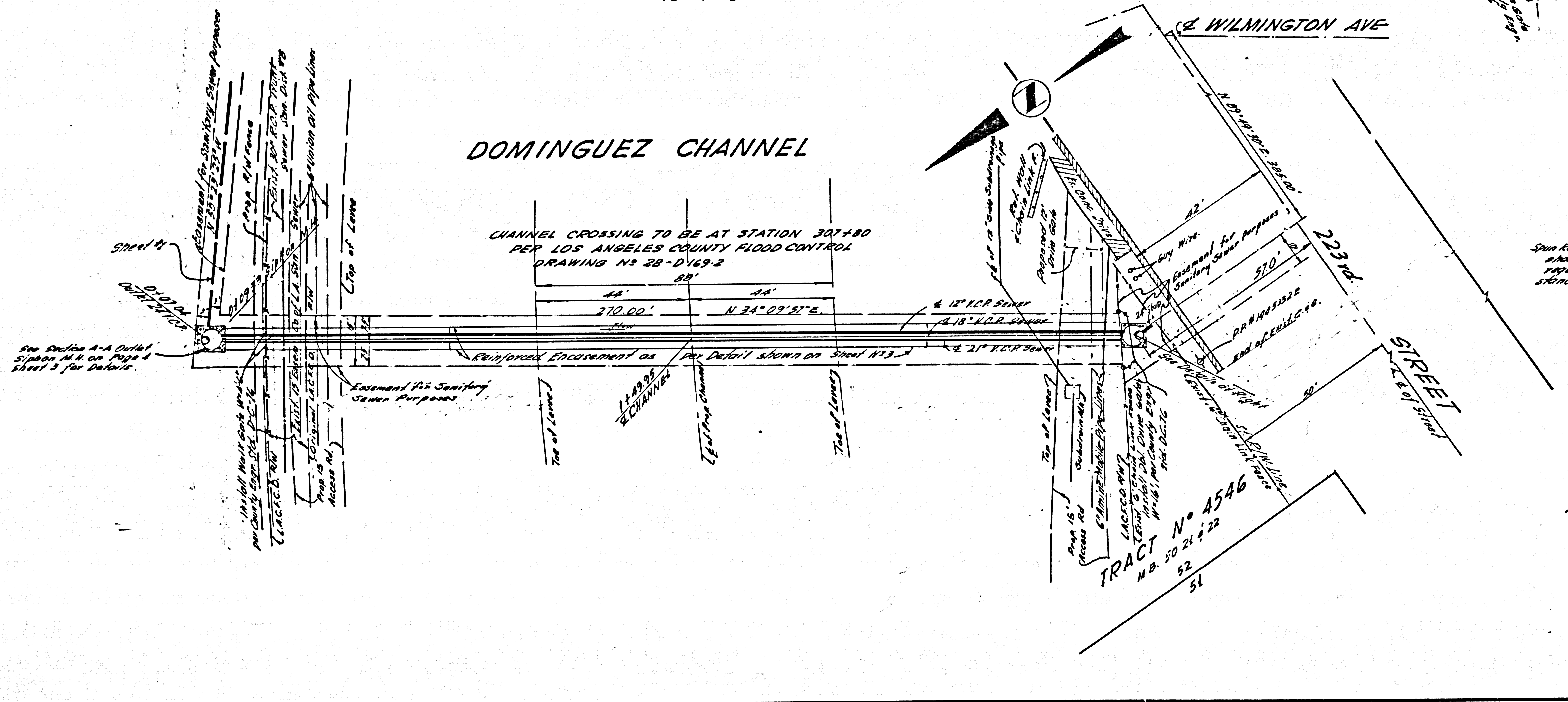




SCALE: HORIZ 1"=20'
VERT 1"=8'

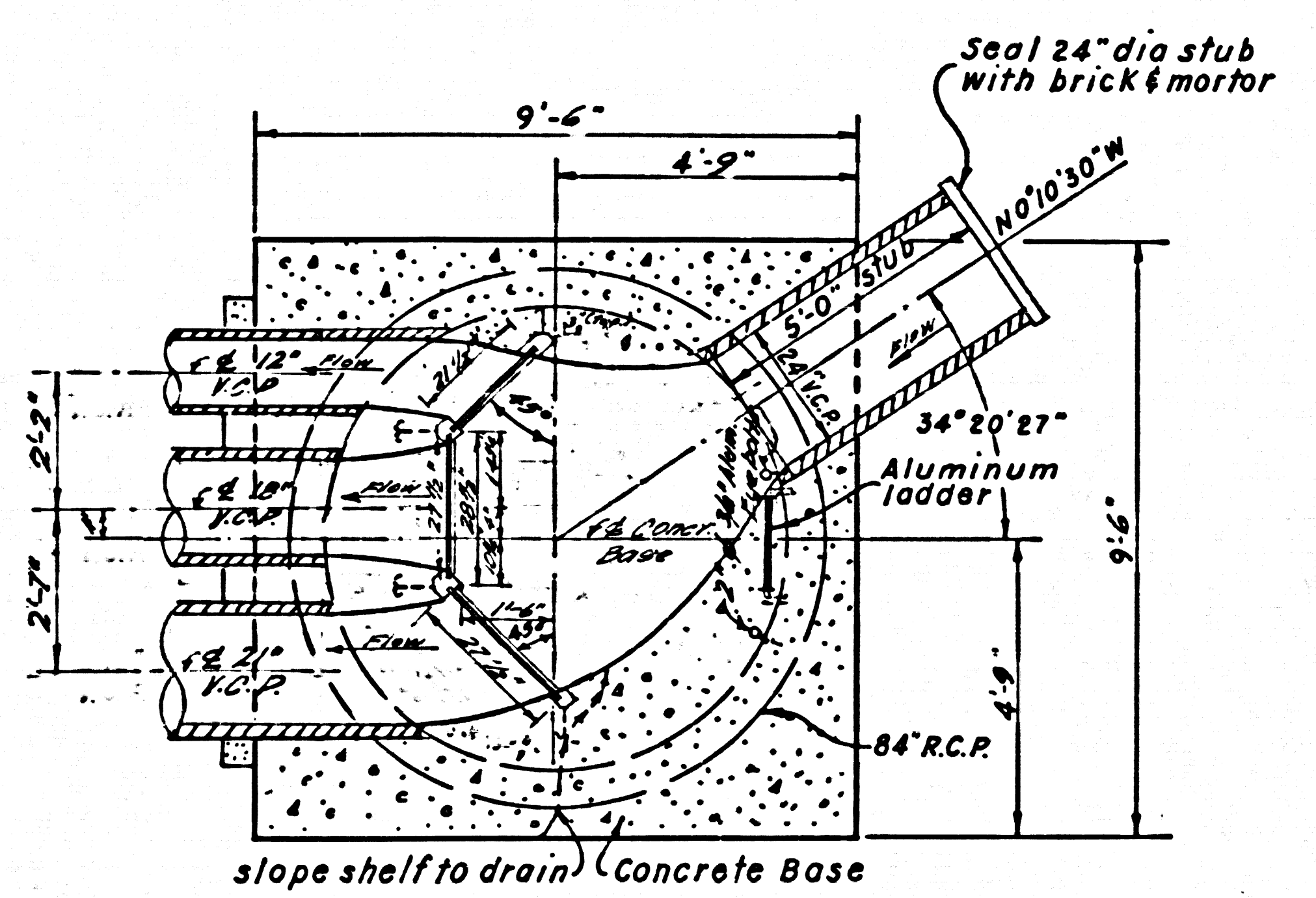


37069

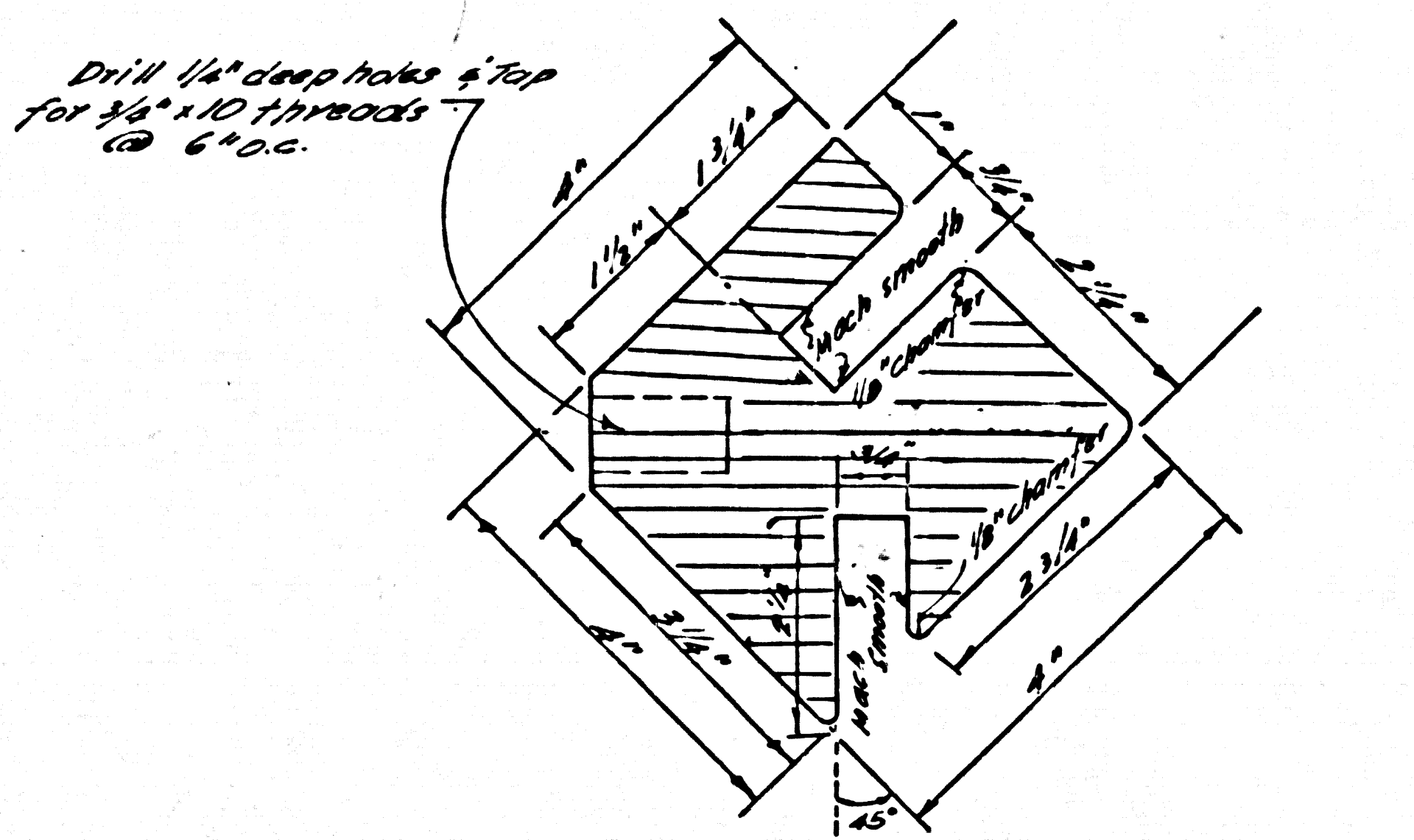


WILLIAM J. MORAN CO
ENGINEERS
SIPHON STRUCTURE

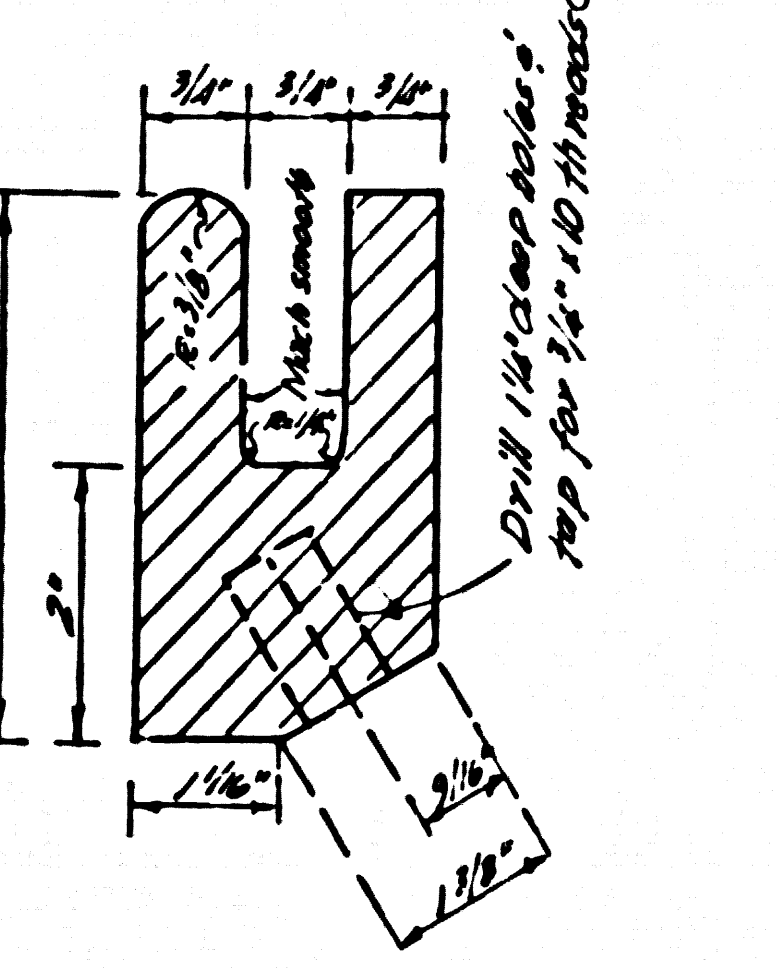
37068



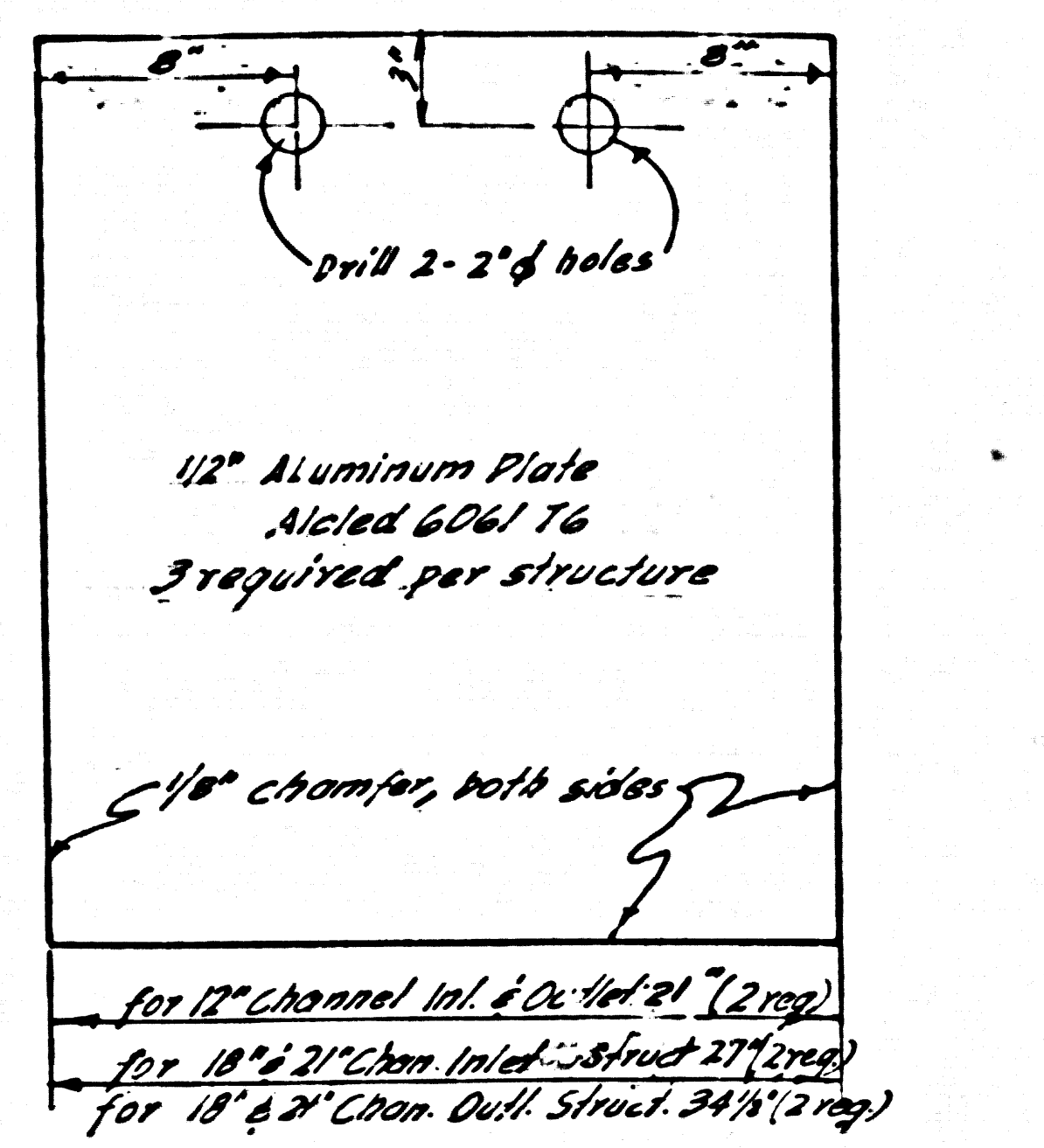
SECTION A-A
INLET SIPHON M.H.
NO. SCALE



ALUMINUM STOP LOG NOTCH DETAIL
Use 4:4 Aluminum Bar (Alclad 6061-T6) & Machine Notches 2 Required per structure
HALF SCALE.

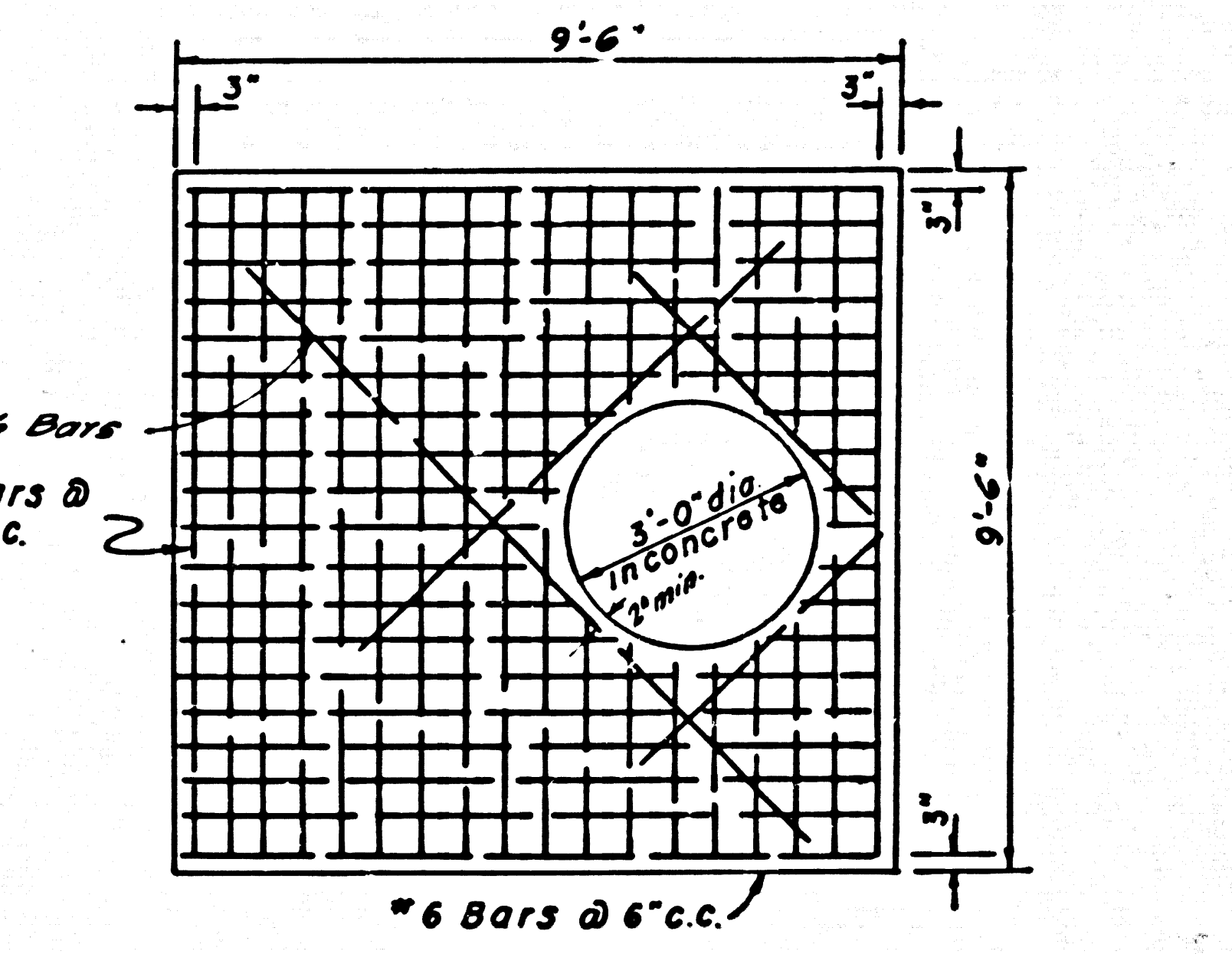


CAST ALUMINUM STOP LOG NOTCH DETAIL
Alclad 356-T51 2'-0" long 2 required per structure.
HALF SCALE.

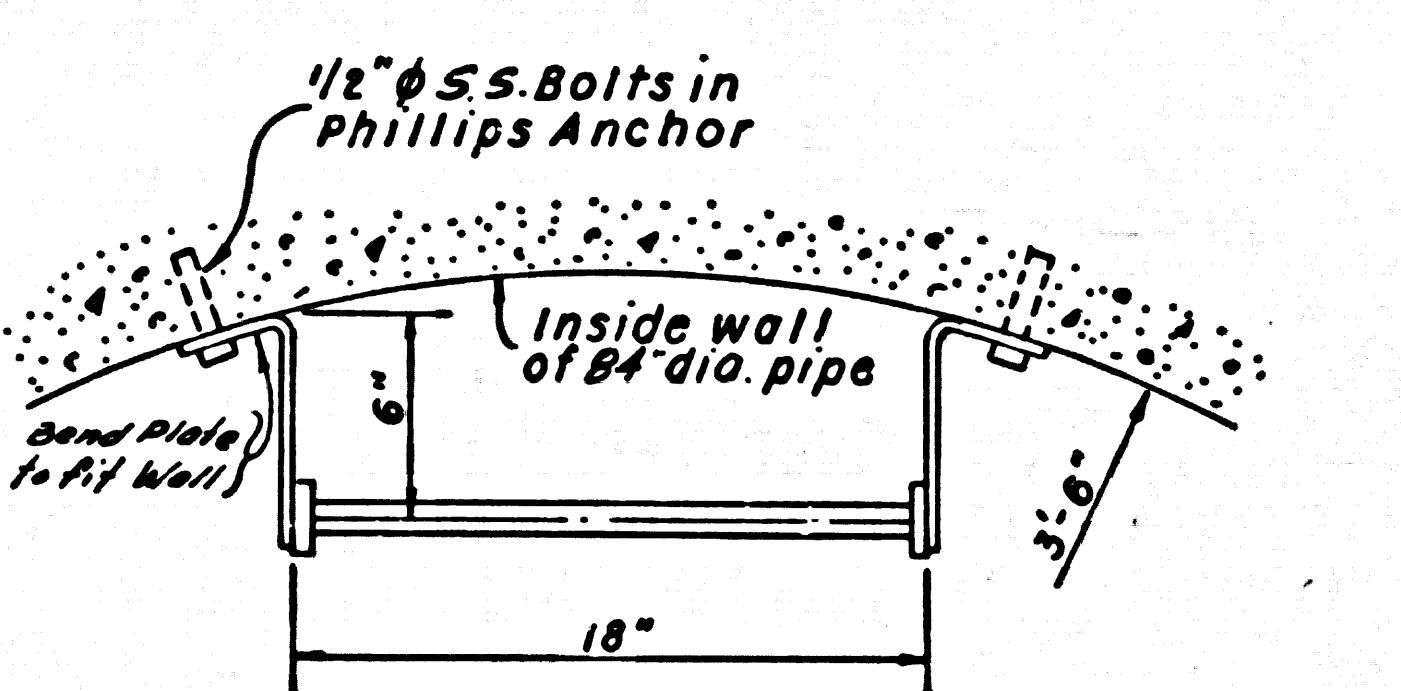


ALUMINUM STOP LOG
Total of 3 required per structure
NOT TO SCALE.

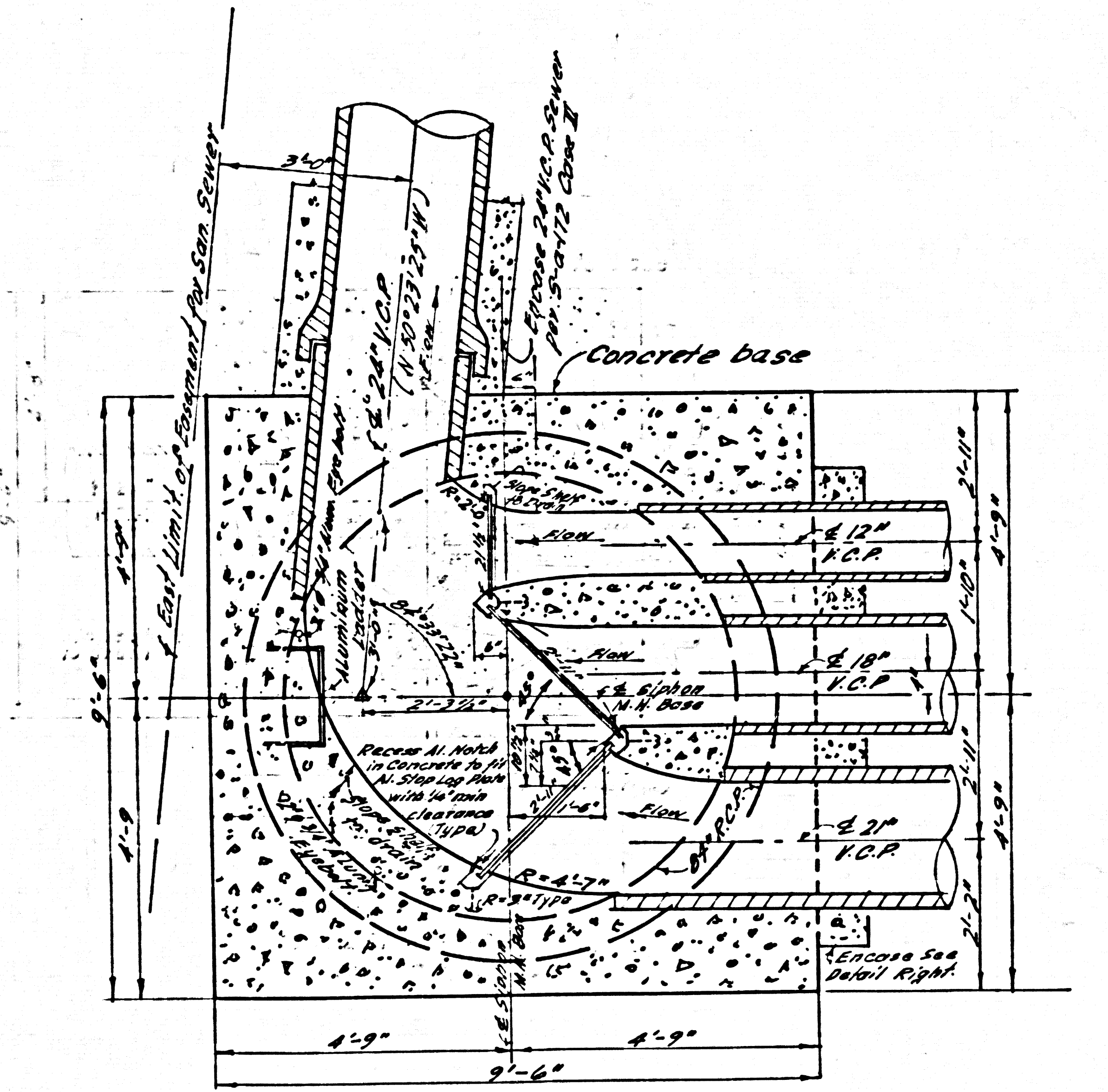
Concrete shall produce 3000 p.s.i. at 28 days. Reinforcing Steel deformed Bars, Intermediate Grade ASTM-A-15



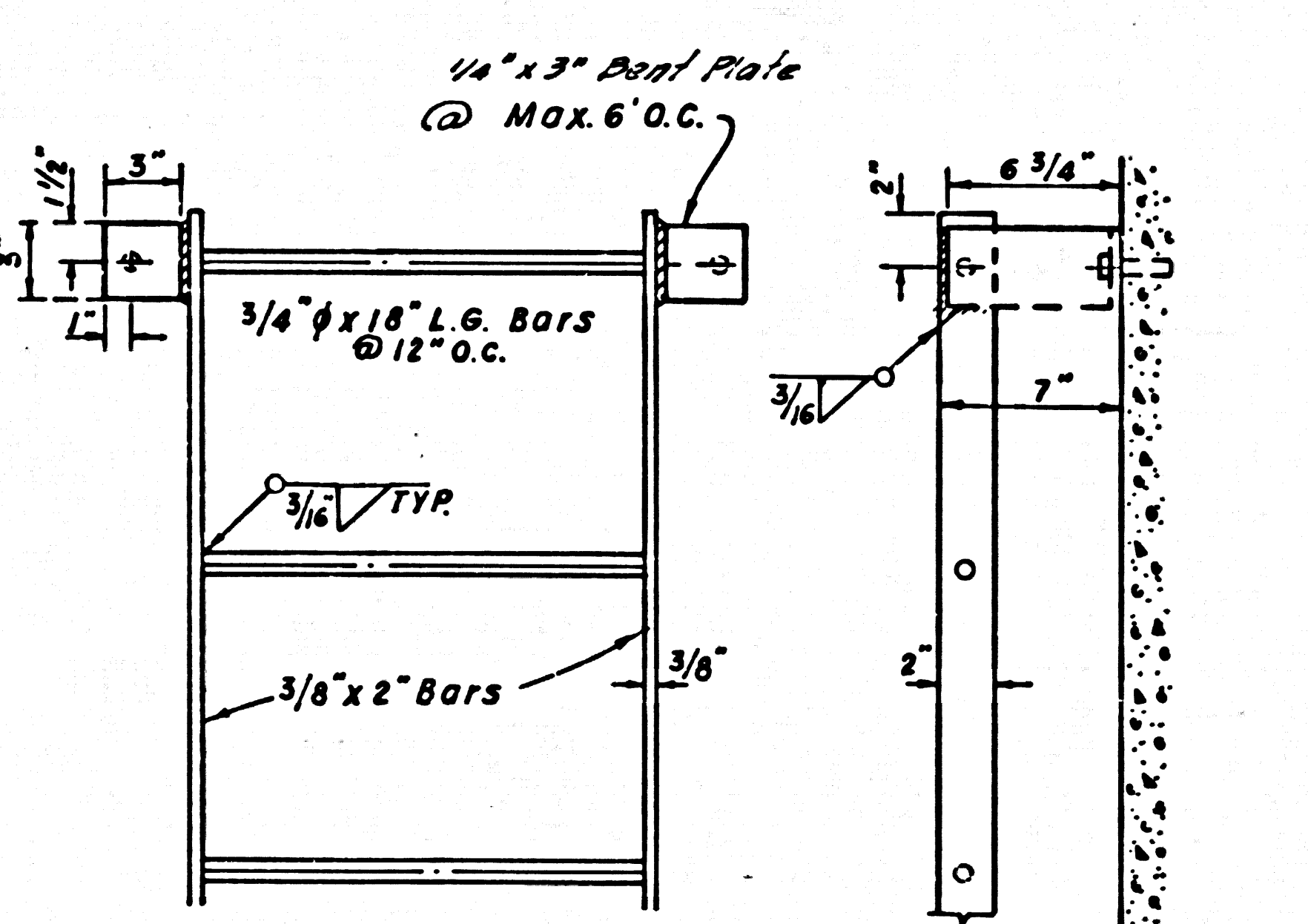
PLAN TOP SLAB BOTTOM STEEL
NO SCALE



PLAN

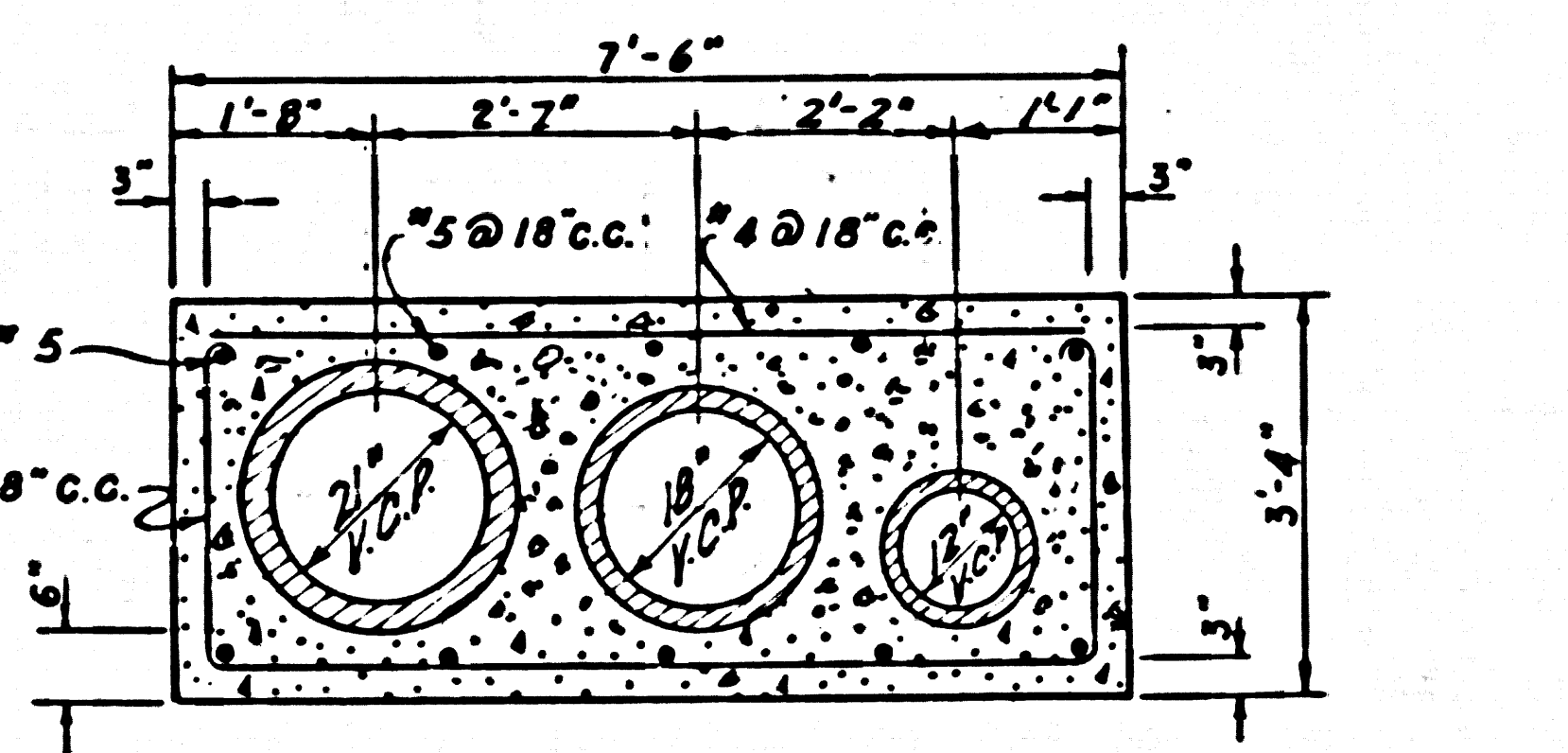


SECTION A-A
OUTLET SIPHON M.H.
Scale: 1/2" = 1'



FRONT VIEW **SIDE VIEW**

ALUMINUM LADDER DETAIL
1 Required per Siphon M.H.
Note: For ladder use Aluminum Alloy 6061-T6
Filler material for welding Alloy 3043
Scale: 1/2" = 1'



SECTION A-A
NO SCALE

REINFORCING & ENCASEMENT DETAIL

WILLIAM J. MORAN CO.
ENGINEERS
SIPHON M.H. DETAILS