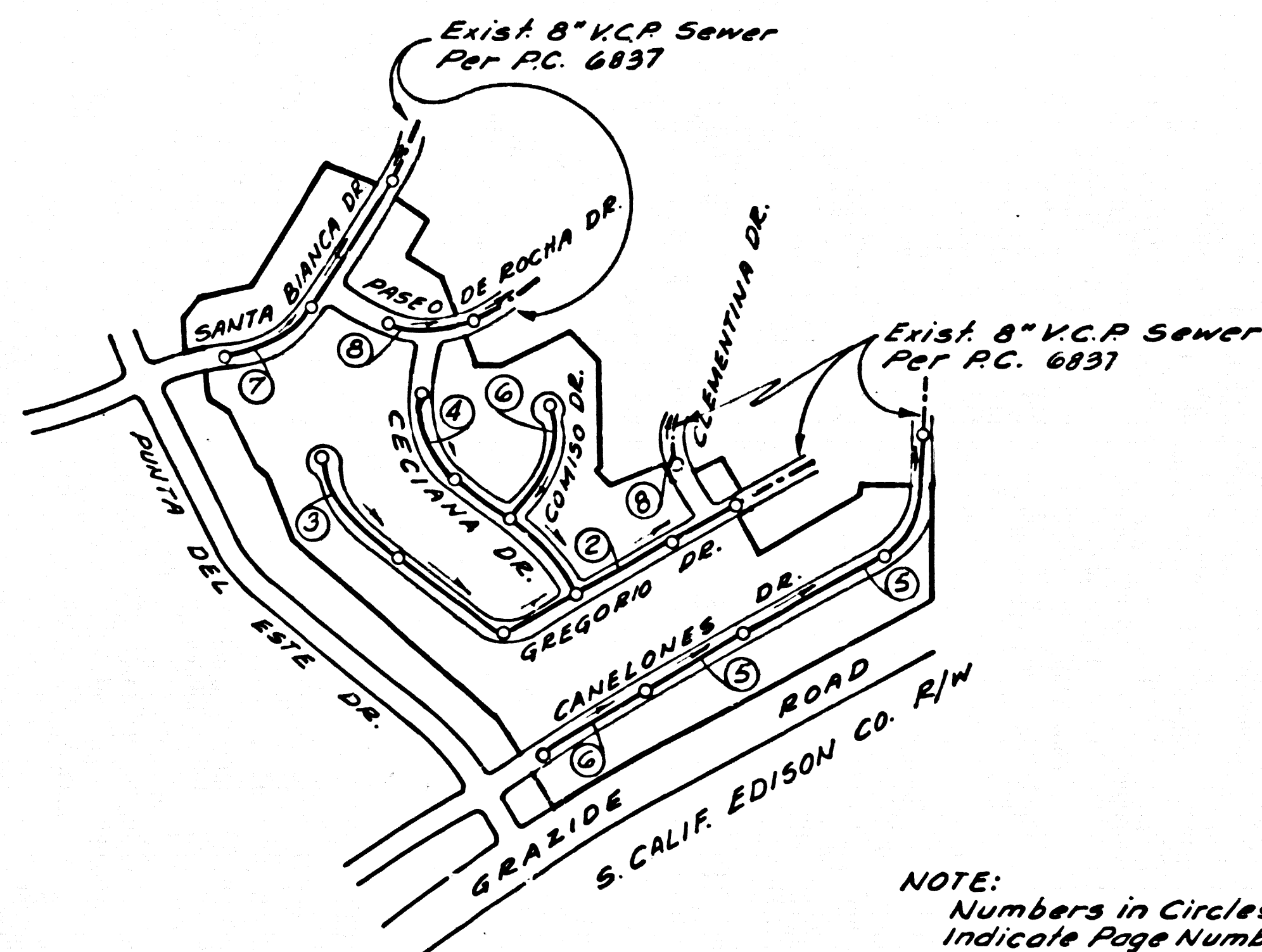


B.M. 561623-A ELEV. 405.237
 R.O. B.M. Tag in North Curb 1/2 East
 of B.C.R. of N.E. Corner of Hacienda
 Blvd & Hollibaugh Rd. 40' N. &
 72' E. of E. Int. (Base Line)
 WHITTIER QUAD. 1955



INDEX MAP
 TRACT NO 27176
 SCALE: 1" = 400'
 P.C. 6878

NOTE:
 Numbers in Circles
 Indicate Page Numbers

NO CONNECTIONS FOR THE DISPOSAL OF INDUSTRIAL WASTES SHALL BE MADE TO SEWERS SHOWN ON THESE DRAWINGS WITHOUT WRITTEN PERMISSION FROM THE CHIEF ENGINEER AND GENERAL MANAGER OF THE COUNTY SANITATION DISTRICTS.

DOUBLE SCALE
 LA PUENTE BLDG. DIST. NO. 2

PROFILE ALIGNMENT AND GRADE OF
 SANITARY SEWERS PAGE 1
 P.C. 6878

CONSTRUCTED IN
 TRACT No 27176 37106
 PRIVATE CONTRACT NO. 6878

W.S. 38
 4 SHEETS, 8 PAGES
 SCALE: VERT. 1" = 4'
 HORIZ. 1" = 40'
 JANUARY, 1964

PREPARED IN THE OFFICES OF
AMCO ENGINEERS INC.
 3400 N. Cahuenga Blvd.
 Los Angeles 28, California
 By: *J. George Arduo*
 J. GEORGE ARDUO REG. E. E. NO. 11467

FOR LEGEND SEE PLAN NO. S-664

- NOTES:
1. PROVIDE STAKES ON THE PROPERTY LINE OR PROPERTY LINES PRODUCED AT RIGHT ANGLES TO THE SEWER LINE AT THE CENTER LINE OF EACH MANHOLE.
 2. NO REPRESENTATIVE OF THE COUNTY ENGINEER WILL SURVEY OR LAY OUT ANY PORTION OF THE WORK.
 3. THE PRIVATE ENGINEER SHALL FURNISH THE COUNTY ENGINEER WITH GRADE SHEETS AND STATIONING FOR ALL HOUSE LATERALS AND Y BRANCHES AND SHALL PROVIDE STAKES FOR THEM AT THEIR PROPER LOCATIONS WITH STATIONING PLAINLY MARKED. ALL HOUSE LATERALS SHALL BE CONSTRUCTED IN A STRAIGHT ALIGNMENT AT RIGHT ANGLES FROM THE MAIN LINE SEWER EXCEPT AS SHOWN ON THE PLANS. HOUSE LATERALS FROM CHIMNEYS SHALL NOT HAVE AN ANGLE OF LESS THAN 45° WITH THE MAIN LINE SEWER. ANY CHANGE IN ALIGNMENT SHALL BE REQUESTED IN WRITING BY THE PRIVATE ENGINEER.
 4. THE PRIVATE ENGINEER SHALL FURNISH THE HOUSE LATERAL DEPTH AT THE PROPERTY LINE BELOW THE TOP OF CURB ELEVATION FOR EACH HOUSE LATERAL ON THE GRADE SHEET.
 5. NO REVISIONS SHALL BE MADE IN THESE PLANS WITHOUT THE APPROVAL OF THE COUNTY ENGINEER.
 6. THE CONTRACTOR SHALL NOTIFY THE CONSTRUCTION DIVISION BY TELEPHONE, MADISON 9-4747, EXT. 18331, AT LEAST TWENTY-FOUR HOURS BEFORE STARTING ANY WORK UNDER THIS CONTRACT.
 7. MANHOLES SHALL BE BRICK SEWER STRUCTURES PER S-104. PRECAST CONCRETE MANHOLES PER S-115 OR S-6 MAY BE USED AS AN ALTERNATE IN LOCATIONS APPROVED BY THE COUNTY ENGINEER.
 8. USE STANDARD MANHOLE FRAMES AND COVERS, S-117, EXCEPT AS NOTED.
 9. MANHOLE TOPS IN UNIMPROVED RIGHTS-OF-WAY TO BE SIX INCHES ABOVE FINISHED GRADE.
 10. USE EXTRA STRENGTH PIPE. ALL PIPE IS STANDARD DEPTH EXCEPT AS NOTED.
 11. USE COMB-ROBBER OR MECHANICAL COMPRESSION JOINTS FOR ALL V.C.P. JOINTS PER SPECS., SECS. 34, 48 & 49.

12. IF A POWER POLE IS WITHIN THREE FEET OF THE SEWER, THE SEWER SHALL BE ENCASED, PER S-172, CASE III, TWO FEET ON EITHER SIDE FROM THE POINT OF INTERFERENCE.
13. IF DURING THE COURSE OF CONSTRUCTION IT IS DETERMINED THAT THERE IS LESS THAN FOUR FEET OF COVER OVER THE TOP OF A MAIN LINE OR HOUSE LATERAL V.C.P. SEWER WHICH IS NOT INDICATED ON THE PLANS, THE PIPE SHALL BE ENCASED PER S-172, CASE III, UNLESS OTHERWISE APPROVED BY THE COUNTY ENGINEER.
14. HOUSE LATERALS TO BE CONSTRUCTED WITH INVERTS AT PROPERTY LINE. 6"..... FEET BELOW CURB GRADE EXCEPT AS NOTED.
15. RESURFACE ALL TRENCHES WITHIN PAVED AREAS TO MEET L.A. COUNTY ROAD DEPT. OR CALIFORNIA STATE HIGHWAY REQUIREMENTS IN ACCORDANCE WITH PERMITS.
16. FOR ALLOWABLE LEAKAGE TEST USE FORMULA NO. 1,..... SPECS., SEC. 34.
17. "SEWERS IN FILLED GROUND"
18. NO CONSTRUCTION WILL BE PERMITTED IN FILL AREA UNLESS ACCEPTABLE CERTIFICATION IS SUBMITTED TO THE CONSTRUCTION DIVISION OF THE COUNTY ENGINEERS DEPARTMENT THAT RELATIVE COMPACTION IS GREATER THAN 80%.
19. IF COMPACTION IS LESS THAN 80%, THE SEWER MUST BE CRADLED AS SHOWN IN THE PLAN PER S-10-158 OR A SPECIAL BASE COURSE PER S-10-179 CASE III. SPECIAL MANHOLE BASES MUST BE INSTALLED PER S-10-125 AS INDICATED ON THE PLANS.
20. IF COMPACTION IS GREATER THAN 80% NEITHER CRADLING NOR SPECIAL MANHOLE BASES WILL BE REQUIRED.
21. ALL FILL TO BE IN PLACE BEFORE SEWERS ARE CONSTRUCTED.
22. ALL STATE AND LOCAL TRENCH SAFETY ORDERS WILL BE RIGIDLY ENFORCED.

COLLECT CHARGES AS INDICATED
Oliver Christian

NOTE
 ISSUE NO HOUSE CONNECTION PERMITS UNTIL P.C. 6837 IS ACCEPTED.
[Signature]

GRADE TO WHICH THIS IMPROVEMENT IS TO BE CONSTRUCTED ARE SHOWN ON PLANS AND PROFILES. GRADE POINTS FOR TOP OF CURBS, CENTER LINE OF STREETS, OR CENTER LINE OF ALLEYS ARE SHOWN BY CIRCLES ON PROFILES. AT ALL POINTS BETWEEN DESIGNATED POINTS THE GRADE SHALL BE ESTABLISHED SO AS TO CONFORM TO A STRAIGHT LINE DRAWN BETWEEN SAID DESIGNATED POINTS. ELEVATIONS ARE IN FEET ABOVE U.S.C. & G.S. SEA LEVEL DATUM OF 1929.

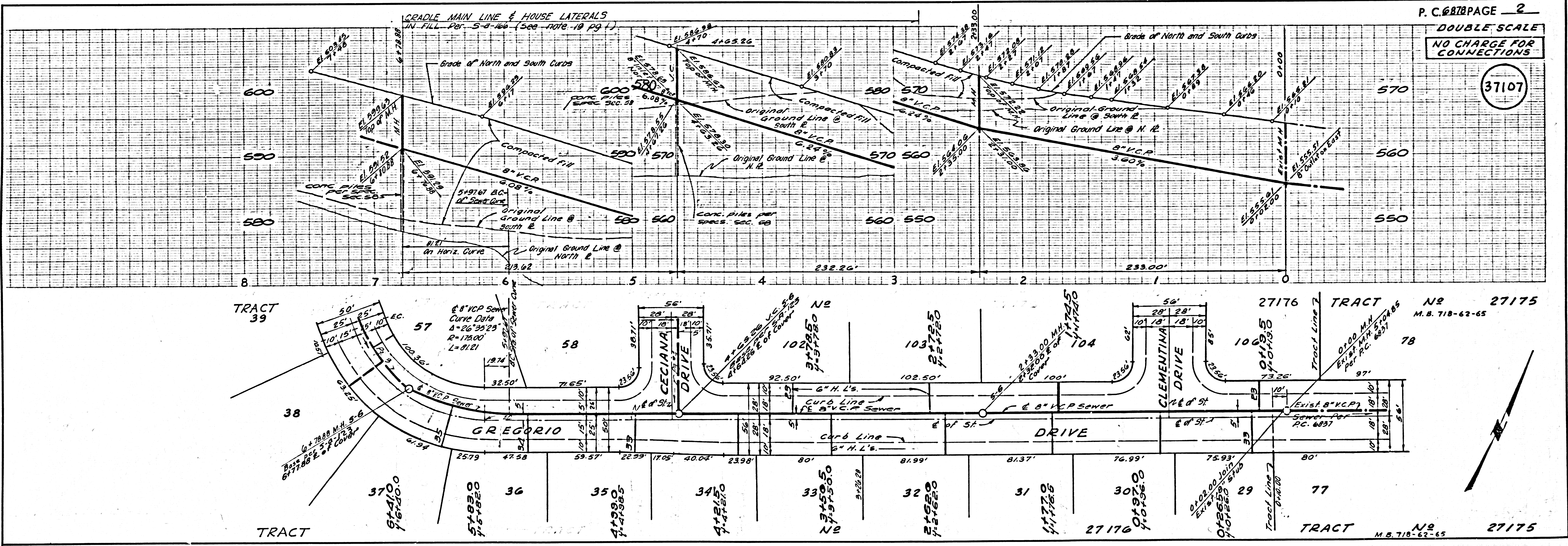
THIS DRAWING AND THE DATA HEREON ARE HEREBY MADE A PART OF THE SPECIFICATIONS. BEFORE WORK CAN BE STARTED, THE CONTRACTOR MUST OBTAIN A PERMIT TO EXCAVATE IN COUNTY STREETS FROM THE L.A. COUNTY ROAD DEPT., DISTRICT OFFICE NO. 1, AND PAY A FEE TO THE COUNTY ENGINEER, ROOM 320, COUNTY ENGINEERING BUILDING, 108 WEST SECOND STREET OR \$ 8.00 DAILY.

APPROVAL OF THIS PLAN BY THE COUNTY OF LOS ANGELES DOES NOT CONSTITUTE A REPRESENTATION AS TO THE ACCURACY OF THE LOCATION OF OR THE EXISTENCE OF ANY UNDERGROUND UTILITY PIPE, OR STRUCTURE WITHIN THE LIMITS OF THIS PROJECT. THIS NOTE APPLIES TO ALL PAGES.

IF WORK IS TO BE DONE IN A STATE HIGHWAY, A PERMIT MUST BE OBTAINED FROM THE STATE OF CALIFORNIA, DIVISION OF HIGHWAYS, 120 SOUTH SPRING STREET, LOS ANGELES, CALIFORNIA.

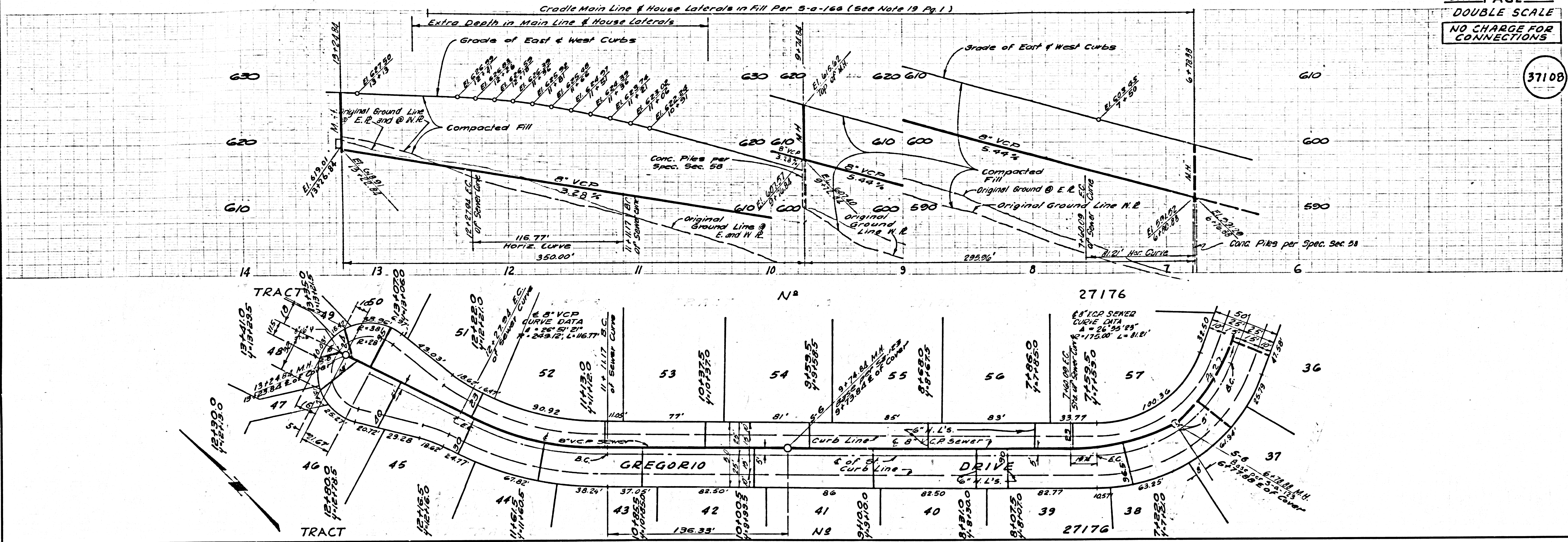
COUNTY OF LOS ANGELES, CALIFORNIA
 JOHN A. LAMBIE, COUNTY ENGINEER J. D. PARKHURST, CHIEF ENGINEER
 CO. SAN. DIST. NO. 2
 APPROVED BY *[Signature]* ASSISTANT SANITATION ENGINEER APPROVED BY *[Signature]* OFFICE ENGINEER
 SUBMITTED BY *[Signature]* REGIONAL ENGINEER
 CHECKED BY *[Signature]* 4-10-64
 REG. C.E. NO. 11636

J.N. 0362.54

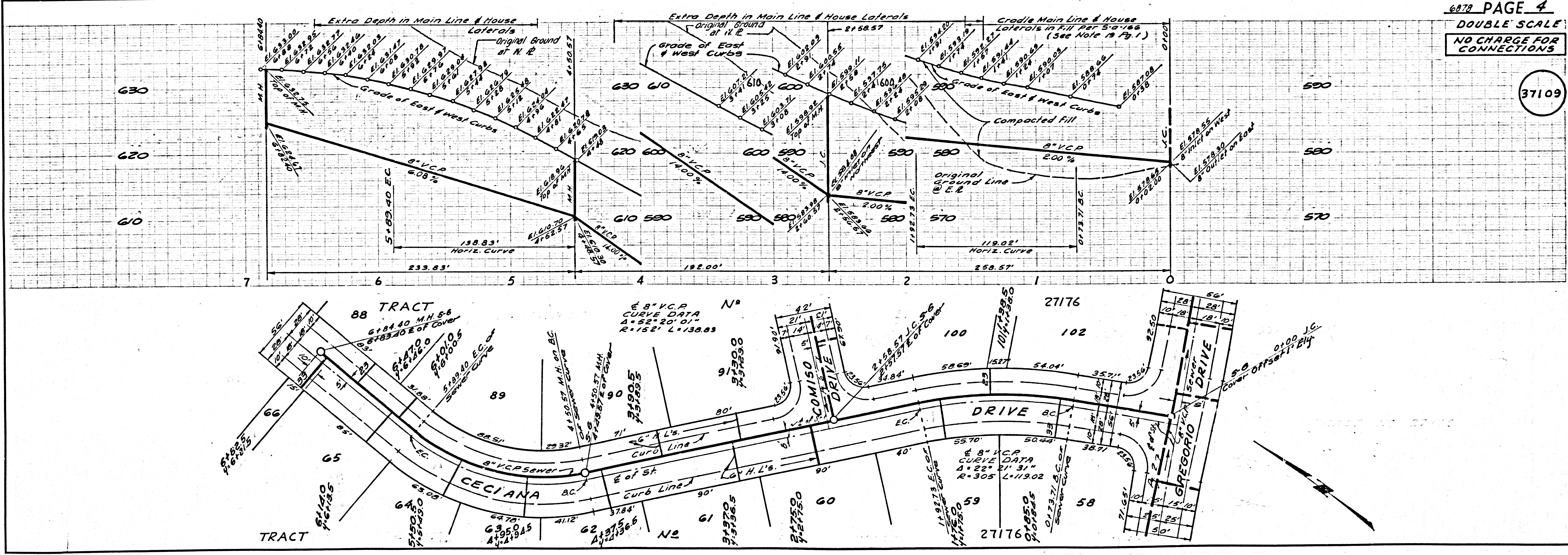


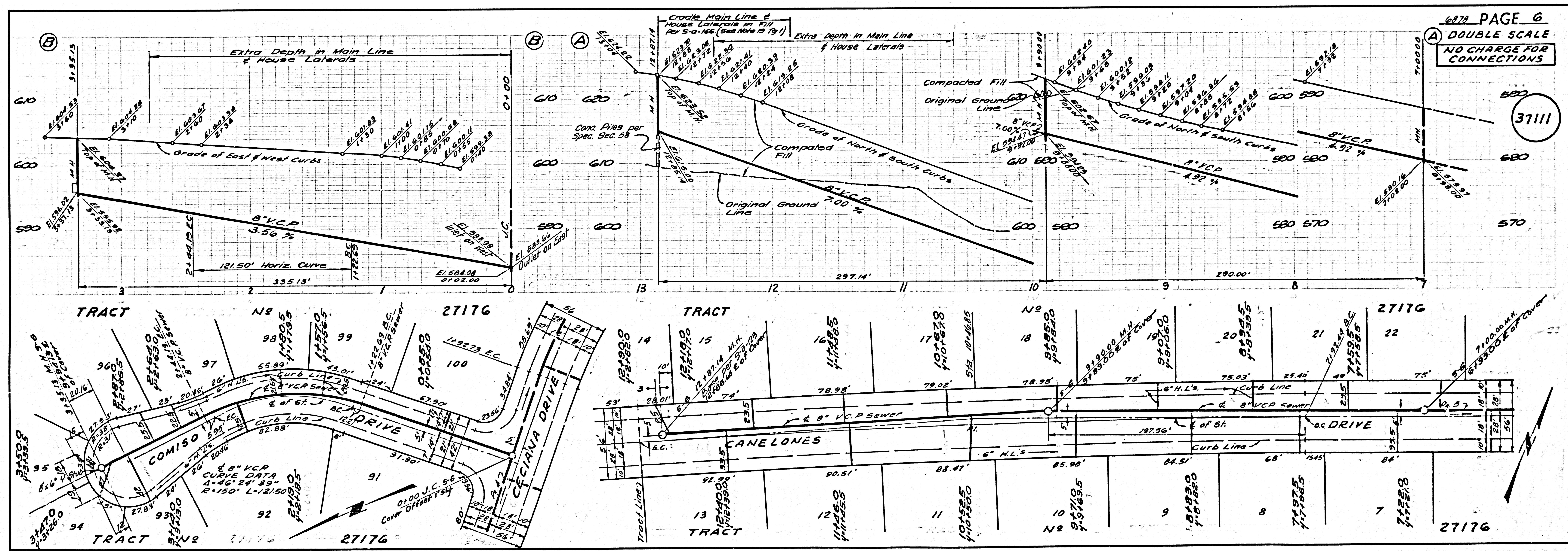
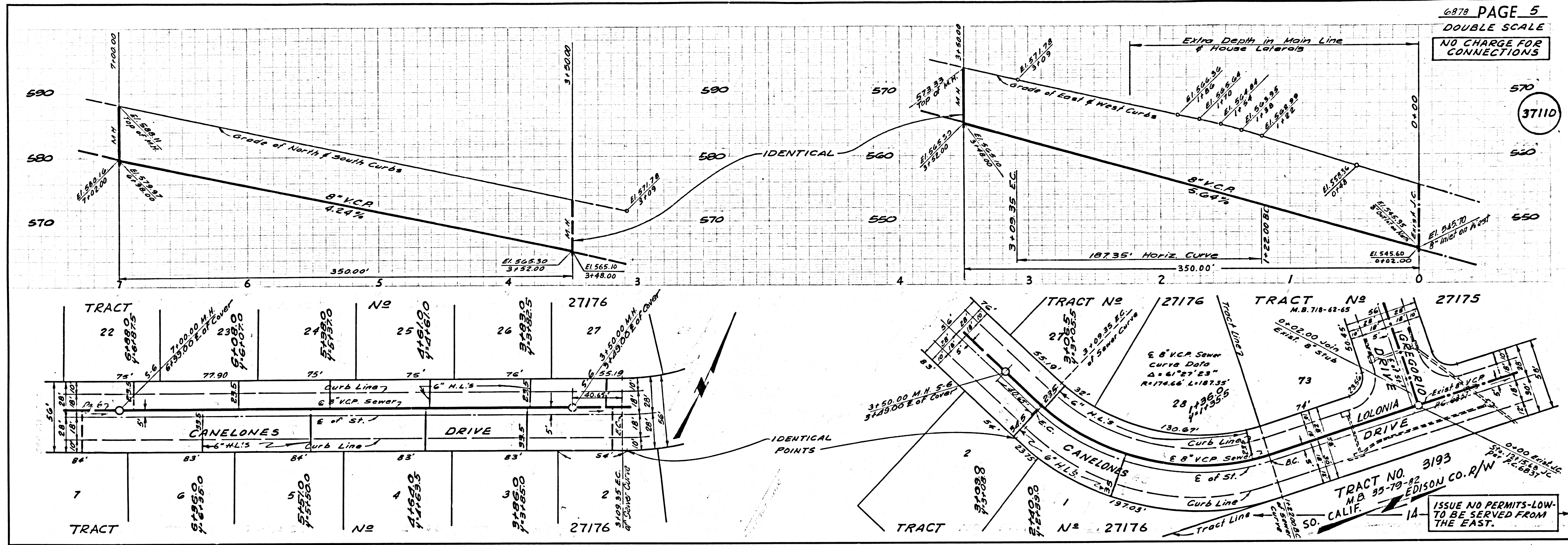
P.C. 6878 PAGE 2
 DOUBLE SCALE
 NO CHARGE FOR CONNECTIONS
 37107

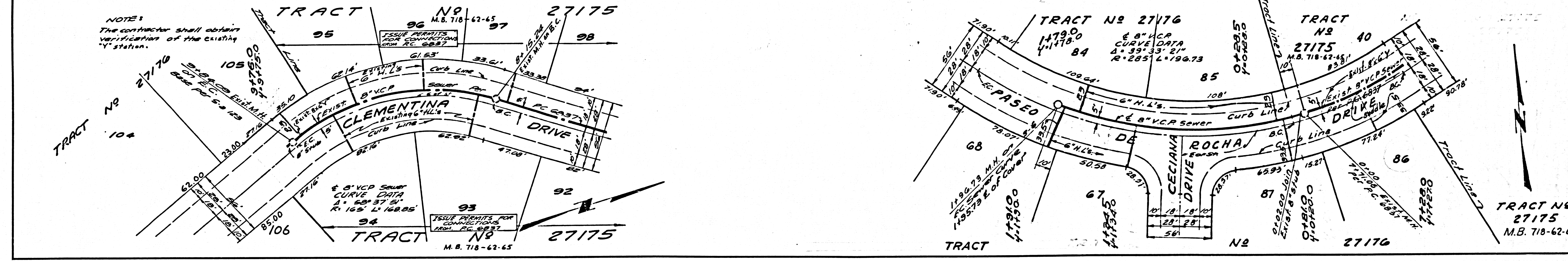
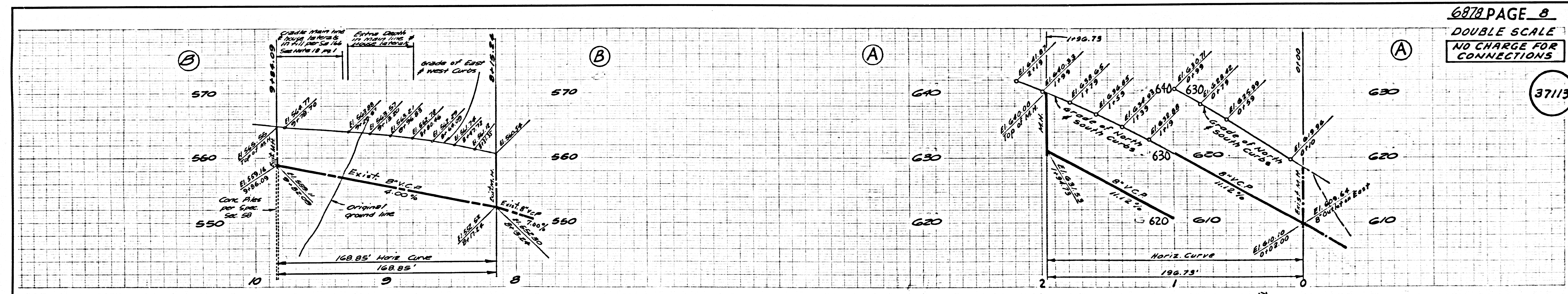
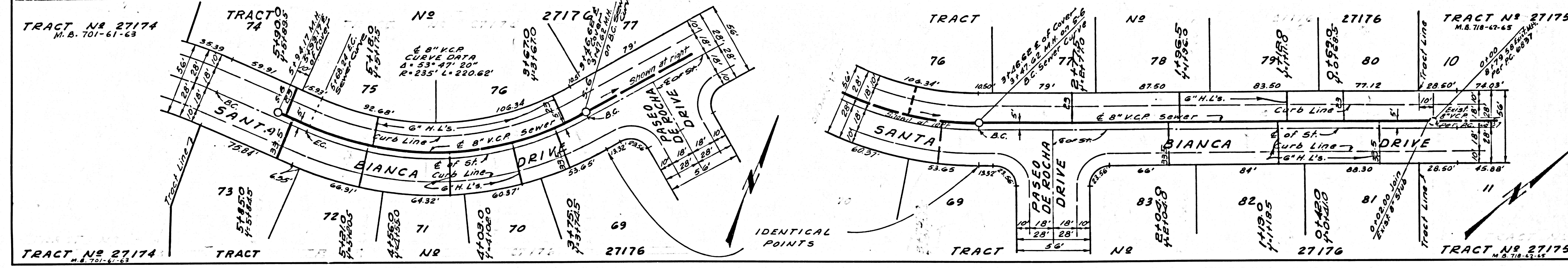
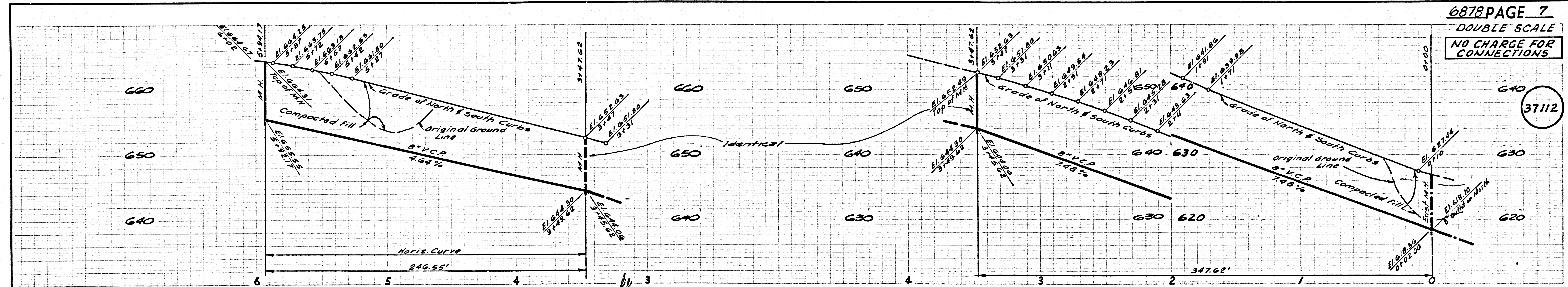
37108



37109







NOTE:
The contractor shall obtain
verification of the existing
"Y" station.