

DOUBLE SCALE  
LENNOX BLDG. DIST. NO. 7

PROFILE ALIGNMENT AND GRADE OF  
SANITARY SEWERS PAGE 1  
P.C. 6881

TO BE CONSTRUCTED IN

TRACT NO. 23935

PRIVATE CONTRACT NO. 6881

W.S. 24

2 SHEETS, 3 PAGES

SCALE: VERT. 1"=4' HORIZ. 1"=40' DECEMBER, 1963

PREPARED IN THE OFFICES OF  
LOS ANGELES INVESTMENT CO.

By: Robert K. Qu  
REG. C. E. NO. 13078

FOR LEGEND SEE PLAN NO. 5-6-64

NOTE:  
GRADES TO WHICH THIS IMPROVEMENT IS TO BE CONSTRUCTED ARE SHOWN ON PLANS AND PROFILES. GRADE POINTS FOR TOP OF CURBS, CENTER LINE OF STREETS, OR CENTER LINE OF ALLEYS ARE SHOWN BY CIRCLES ON PROFILES. AT ALL POINTS BETWEEN DESIGNATED POINTS THE GRADE SHALL BE ESTABLISHED SO AS TO CONFORM TO A STRAIGHT LINE DRAWN BETWEEN SAID DESIGNATED POINTS. ELEVATIONS ARE IN FEET ABOVE U.S.C. & G.S. SEA LEVEL DATUM OF 1929.  
THIS DRAWING AND THE DATA HEREON ARE HEREBY MADE A PART OF THE SPECIFICATIONS.  
BEFORE WORK CAN BE STARTED, THE CONTRACTOR MUST OBTAIN A PERMIT TO EXCAVATE IN COUNTY STREETS FROM THE L.A. COUNTY ROAD DEPT., DISTRICT OFFICE NO. 13, AND PAY A FEE TO THE COUNTY ENGINEER, ROOM 300, COUNTY ENGINEERING BUILDING, 100 WEST SECOND STREET OR CALIFORNIA VALLEY REGIONAL OFFICE, SUFFICIENT TO COVER THE COST OF CONSTRUCTION INSPECTION AND RECORD PLANS.  
APPROVAL OF THIS PLAN BY THE COUNTY OF LOS ANGELES DOES NOT CONSTITUTE A REPRESENTATION AS TO THE ACCURACY OF THE LOCATION OF OR THE EXISTENCE OR NON-EXISTENCE OF ANY UNDERGROUND UTILITY PIPE, OR STRUCTURE WITHIN THE LIMITS OF THIS PROJECT. THIS NOTE APPLIES TO ALL PAGES.  
IF WORK IS TO BE DONE IN A STATE HIGHWAY, A PERMIT MUST BE OBTAINED FROM THE STATE OF CALIFORNIA, DIVISION OF HIGHWAYS, 120 SOUTH SPRING STREET, LOS ANGELES, CALIFORNIA.

COUNTY OF LOS ANGELES, CALIFORNIA  
JOHN A. LAMBIE, COUNTY ENGINEER J. D. PARKHURST, CHIEF ENGINEER  
CO. SAN. DIST. NO. 7

APPROVED BY: *[Signature]* ASSISTANT SANITATION ENGINEER  
APPROVED BY: *[Signature]* OFFICE ENGINEER

SUBMITTED BY: *[Signature]* REGIONAL ENGINEER

CHECKED BY: *[Signature]* REG. C. E. NO. 13926

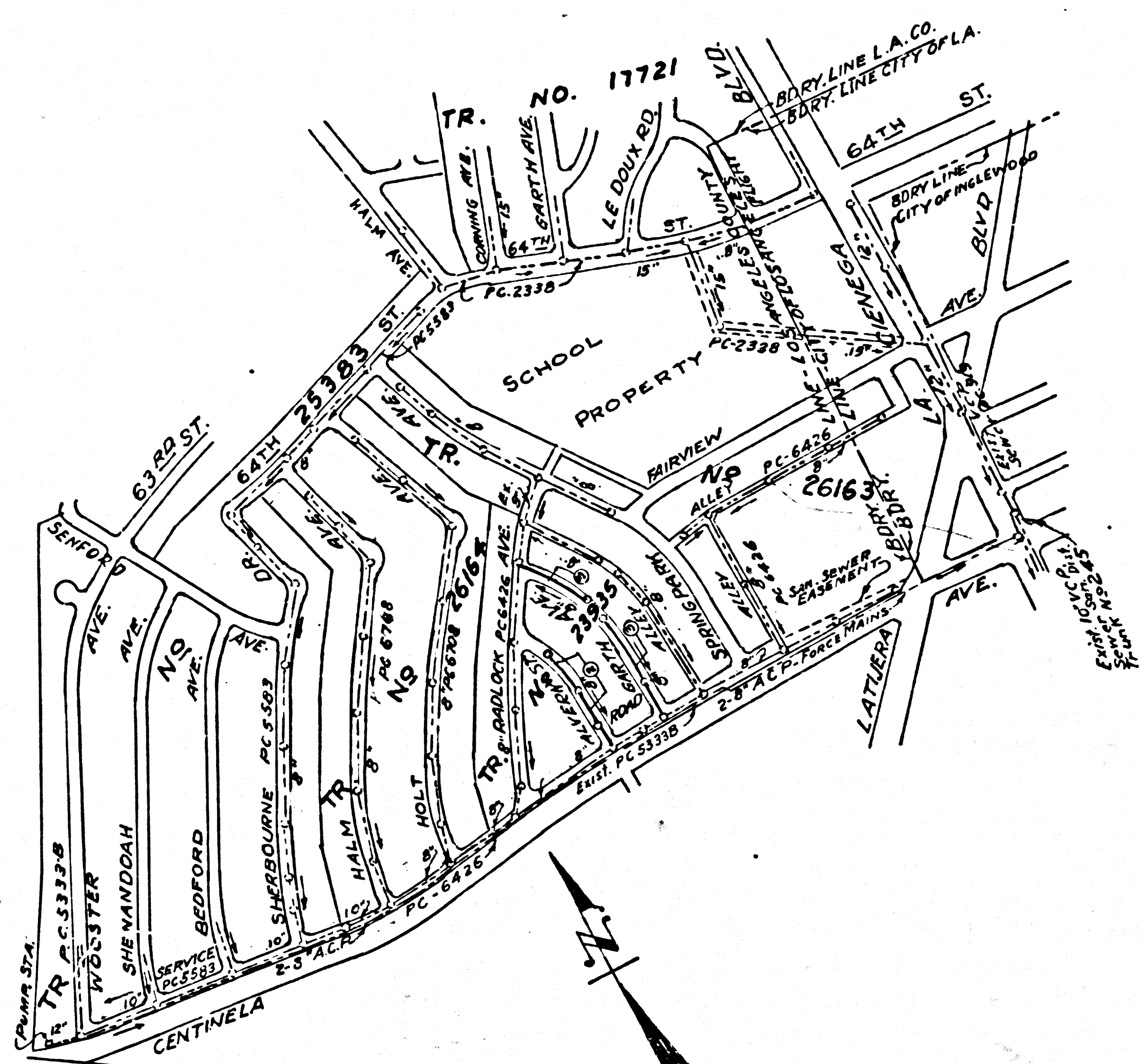
J.N. 036256

B.M. 29-8 ELEV. 125.403 ± 1961 Adj.  
(PREEMAN BLVD) NOW LA CIENEGA BLVD. AND  
CENTINELA AVE. AT CENTER OF INTERSECTION.  
SET IN A WELL PROTECTED BY CAST IRON COVER  
MARKED CITY OF LOS ANGELES MONUMENT  
ENGINEERING AND SURVEYING DEPT. 1937-1938.  
L.A. Co. Rd. Dept. No. 337. QUAD. 19

B.M. L.A.I. Company FB 263 Pg. 3 Elev. 135.75  
Chiseled Knob, E. Curb Corning Ave. N.E. Return  
64th Street and Corning Ave.

B.M. L.A.I. Company FB 263 Pg. 8 Elev. 41.03  
Spk. Set in lead No. T.C. Centinela Ave.  
East P.L. of Dow Chemical Co.

NOTE:  
Old L.A. City Datum - Add 5.575 for Road Department.  
Old L.A. City Datum - Add 5.775 for U.S.C. & G.S. Seal level  
Datum of 1929.  
ADD 5.00 TO L.A.I. DATUM TO COUNTY RD. DEPT.



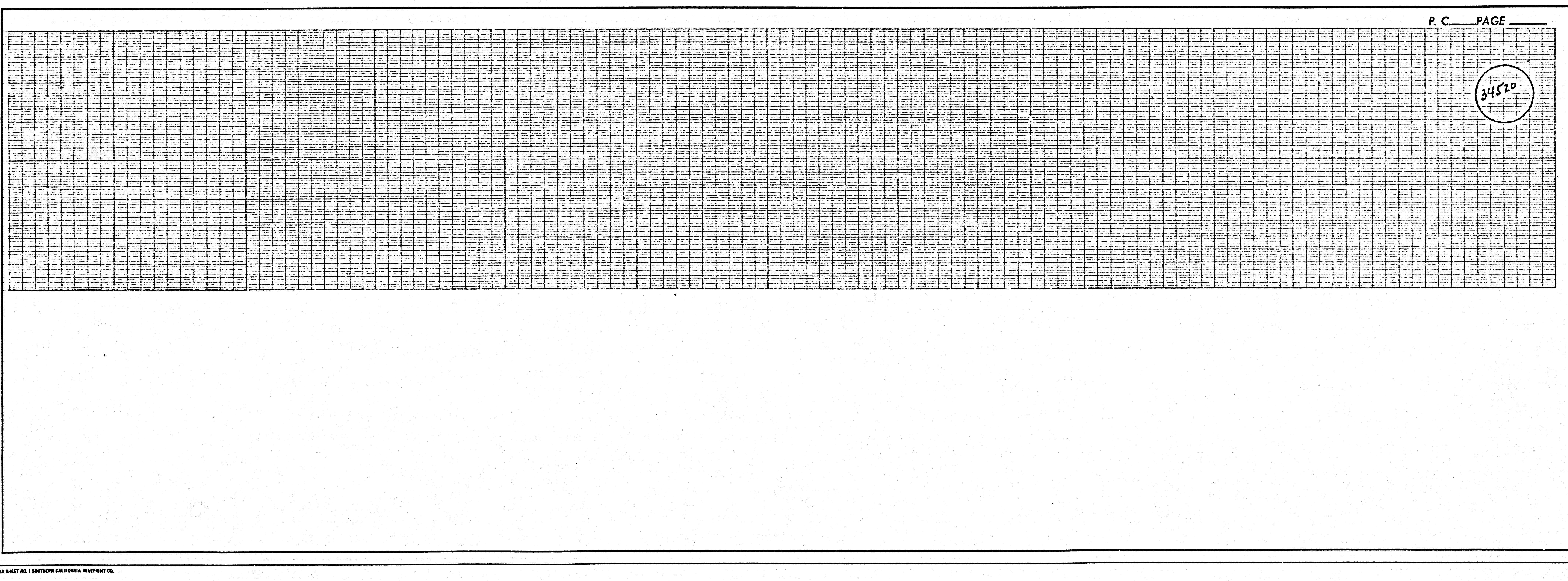
P.C. NO. 6881  
SCALE 1"=600'  
TRACT NO. 23935  
NOTE: NUMBERS IN CIRCLES INDICATE PAGE NUMBER

- NOTES:
1. PROVIDE STAKES ON THE PROPERTY LINE OR PROPERTY LINES PRODUCED AT RIGHT ANGLES TO THE SEWER LINE AT THE CENTER LINE OF EACH MANHOLE.
  2. NO REPRESENTATIVE OF THE COUNTY ENGINEER WILL SURVEY OR LAY OUT ANY PORTION OF THE WORK.
  3. THE PRIVATE ENGINEER SHALL FURNISH THE COUNTY ENGINEER WITH GRADE SHEETS AND STATIONING FOR ALL HOUSE LATERALS AND Y BRANCHES AND SHALL PROVIDE STAKES FOR THEM AT THEIR PROPER LOCATIONS WITH STATIONING PLAINLY MARKED. ALL HOUSE LATERALS SHALL BE CONSTRUCTED IN A STRAIGHT ALIGNMENT AT RIGHT ANGLES FROM THE MAIN LINE SEWER EXCEPT AS SHOWN ON THE PLANS. HOUSE LATERALS FROM CHIMNEYS SHALL NOT HAVE AN ANGLE OF LESS THAN 45° WITH THE MAIN LINE SEWER. ANY CHANGE IN ALIGNMENT SHALL BE REQUESTED IN WRITING BY THE PRIVATE ENGINEER.
  4. THE PRIVATE ENGINEER SHALL FURNISH THE HOUSE LATERAL DEPTH AT THE PROPERTY LINE BELOW THE TOP OF CURB ELEVATION FOR EACH HOUSE LATERAL ON THE GRADE SHEET.
  5. NO REVISIONS SHALL BE MADE IN THESE PLANS WITHOUT THE APPROVAL OF THE COUNTY ENGINEER.
  6. THE CONTRACTOR SHALL NOTIFY THE CONSTRUCTION DIVISION BY TELEPHONE, MADISON 9-42, EXT. 81551, AT LEAST TWENTY-FOUR HOURS BEFORE STARTING ANY WORK UNDER THIS CONTRACT.
  7. MANHOLES SHALL BE BRICK SEWER STRUCTURES PER S-4-104. PRECAST CONCRETE MANHOLES PER S-1-155 OR S-1-173 MAY BE USED AS AN ALTERNATE IN LOCATIONS APPROVED BY THE COUNTY ENGINEER.
  8. USE STANDARD MANHOLE FRAMES AND COVERS, S-1-177.
  9. MANHOLE TOPS IN UNIMPROVED RIGHTS-OF-WAY TO BE SIX INCHES ABOVE FINISHED GRADE.
  10. USE EXTRA STRENGTH PIPE. ALL PIPE IS STANDARD DEPTH EXCEPT AS NOTED.
  11. USE MECHANICAL COMPRESSION JOINTS FOR ALL V.C.P. JOINTS PER SPEC., SECS. 36 & 48, S-4-9.
  12. ALL STATE AND LOCAL TRENCH SAFETY ORDERS WILL BE RIGIDLY ENFORCED.
  13. IF A POWER POLE IS WITHIN THREE FEET OF THE SEWER, THE SEWER SHALL BE ENCASED, PER S-4-173, CASE III, TWO FEET ON EITHER SIDE FROM THE POINT OF INTERFERENCE.
  14. IF DURING THE COURSE OF CONSTRUCTION IT IS DETERMINED THAT THERE IS LESS THAN FOUR FEET OF COVER OVER THE TOP OF A MAIN LINE OR HOUSE LATERAL V.C.P. SEWER WHICH IS NOT INDICATED ON THE PLANS, THE PIPE SHALL BE ENCASED PER S-4-173, CASE III, UNLESS OTHERWISE APPROVED BY THE COUNTY ENGINEER.
  15. HOUSE LATERALS TO BE CONSTRUCTED WITH INVERTS AT PROPERTY LINE... 6... FEET BELOW CURB GRADE EXCEPT AS NOTED.
  16. RESURFACE ALL TRENCHES WITHIN PAVED AREAS TO MEET L.A. COUNTY ROAD DEPT. OR CALIFORNIA STATE HIGHWAY REQUIREMENTS IN ACCORDANCE WITH PERMITS.
  17. FOR ALLOWABLE LEAKAGE TEST USE FORMULA NO. 2....., SPEC., SEC. 54.

NOTE:  
ISSUE NO HOUSE CONNECTION PERMITS UNTIL  
TRACT NO. 26164 HAS BEEN RECORDED.

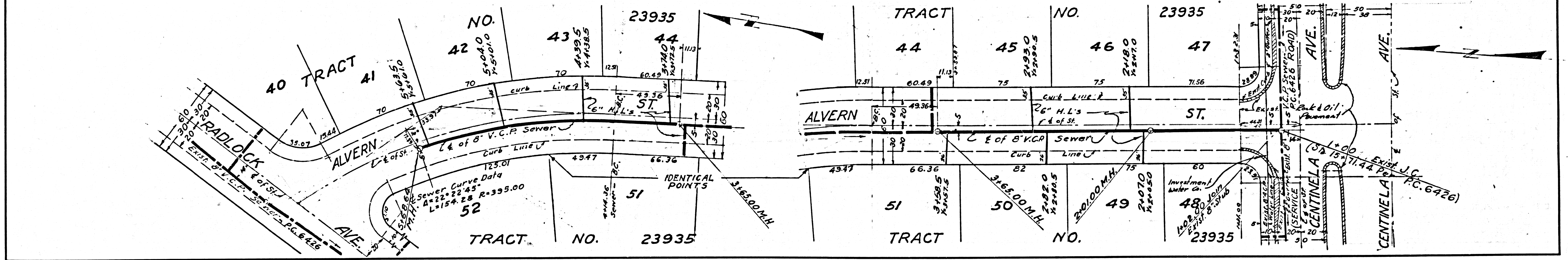
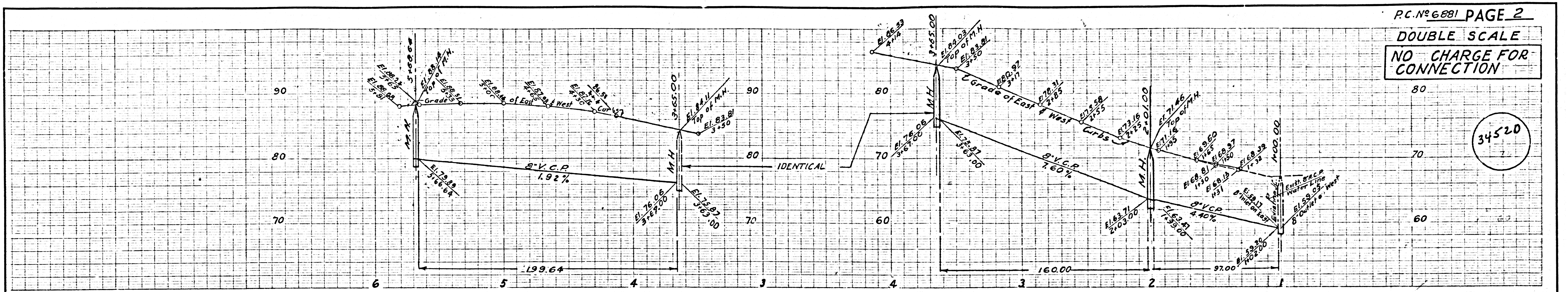
NO CONNECTIONS FOR THE DISPOSAL OF  
INDUSTRIAL WASTES SHALL BE MADE TO  
SEWERS SHOWN ON THESE DRAWINGS  
WITHOUT WRITTEN PERMISSION FROM THE  
CHIEF ENGINEER AND GENERAL MANAGER  
OF THE COUNTY SANITATION DISTRICTS.

COLLECT CHARGES  
AS INDICATED  
*[Signature]*



DOUBLE SCALE  
NO CHARGE FOR CONNECTION

34520



DOUBLE SCALE  
NO CHARGE FOR CONNECTION

34521

