

TO BE CONSTRUCTED IN

TRACT N° 26695

PRIVATE CONTRACT NO. 6885

W.S. 30

4 SHEETS; 8 PAGES

SCALE: VERT. 1"=4'

HORIZ. 1"=40'

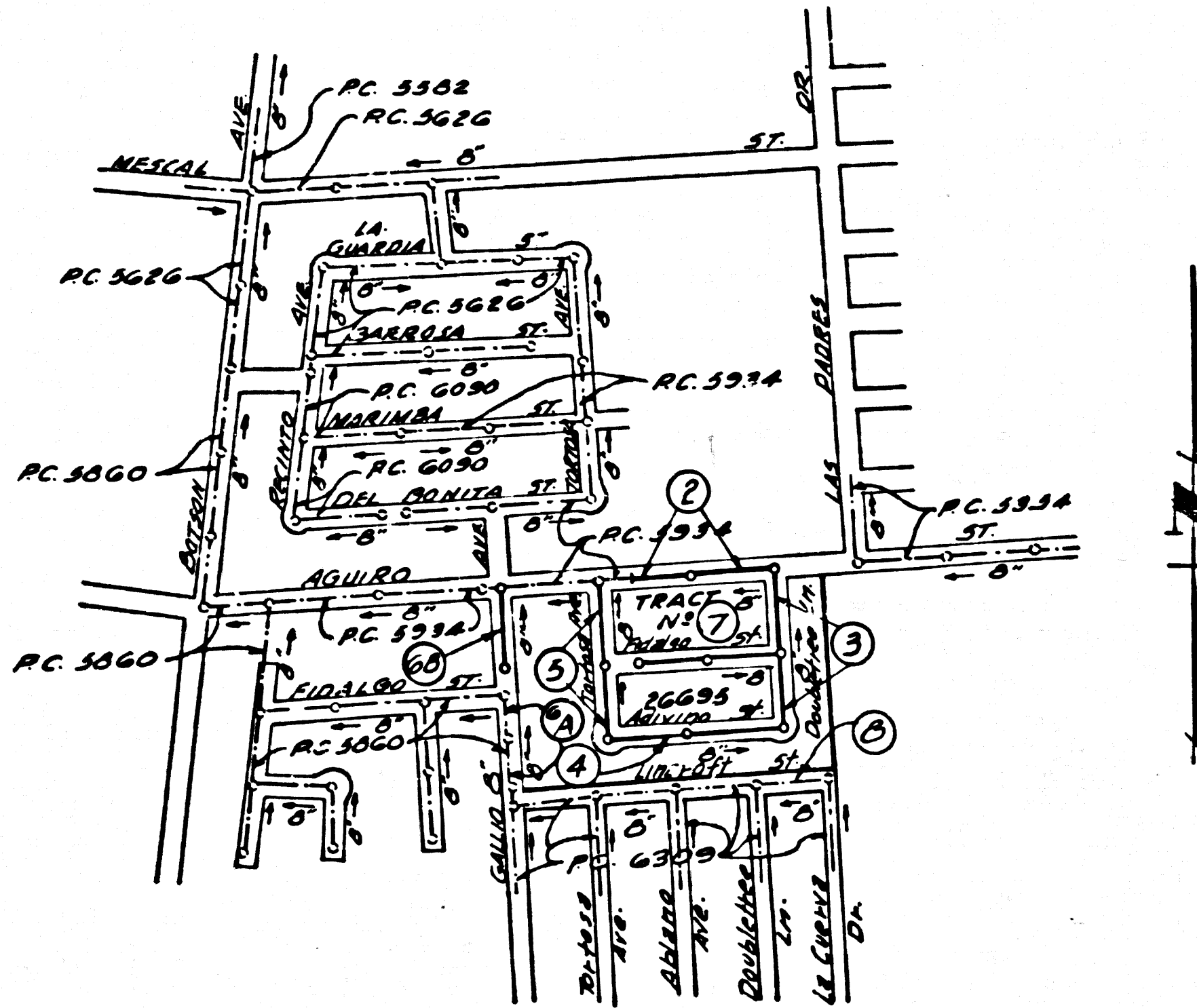
JUNE 1964

PREPARED IN THE OFFICES OF

HEMMERER ENGR. CO. INC. 36256

By: Robert R. Flores REG. C. E. NO. 11349

FOR LEGEND SEE PLAN NO. S-A-64



NOTE: NUMBERS IN CIRCLES INDICATE PAGE NUMBERS

INDEX MAP
TRACT N° 26695
P.C. 6885
SCALE: 1"=600'

NOTE:

The Existence And Approximate Location of Underground Utilities or Structures Shown on These Plans Were Determined BY A Search of The Available Public Records. To The Best of Our Knowledge There Are No Existing Underground Utilities or Structures Except as Shown on This Map. The Contractor is Required to Take Due and Careful Notice of the Location of All Utilities or Structures Shown and Any Other Utilities or Structures at the Site. It Shall be the Contractors Responsibility to Notify the Owners of the Utilities or Structures Concerned Before Starting Work.

NOTE:

- 1. PROVIDE STAKES ON THE PROPERTY LINE OR PROPERTY LINES PRODUCED AT RIGHT ANGLES TO THE SEWER LINE AT THE CENTER LINE OF EACH MANHOLE.
2. NO REPRESENTATIVE OF THE COUNTY ENGINEER WILL SURVEY OR LAY OUT ANY PORTION OF THE WORK.
3. THE OWNER OR HIS AUTHORIZED REPRESENTATIVE SHALL FURNISH THE COUNTY ENGINEER WITH GRADE SHEETS AND STATIONING FOR ALL HOUSE LATERALS AND Y BRANCHES AND SHALL PROVIDE STAKES FOR THEM AT THEIR PROPER LOCATIONS WITH STATIONING PLAINLY MARKED. ANY CHANGE IN ALIGNMENT SHALL BE REQUESTED IN WRITING BY THE CONTRACTOR. ALL HOUSE LATERALS SHALL BE LOCATED IN A STRAIGHT LINE MEASUREMENT AT RIGHT ANGLES FROM THE MAIN LINE SEWER EXCEPT AS SHOWN ON THE PLANS.
4. THE PRIVATE ENGINEER SHALL FURNISH THE HOUSE LATERAL DEPTH AT THE PROPERTY LINE BELOW THE TOP OF CURB ELEVATION FOR EACH HOUSE LATERAL ON THE GRADE SHEET.
5. NO REVISIONS SHALL BE MADE IN THESE PLANS WITHOUT THE APPROVAL OF THE COUNTY ENGINEER.
6. USE STANDARD MANHOLE FRAMES AND COVERS, S-117, EXCEPT AS NOTED.
7. USE EXTRA STRENGTH PIPE. ALL PIPE IS STANDARD DEPTH EXCEPT AS NOTED.
8. USE MECHANICAL COMPRESSION JOINTS FOR ALL V.C.P. JOINTS PER SPEC'S, SECT. 36, 4.4.49
9. RESURFACE ALL TRENCH WITHIN PAVED AREA TO MEET L.A. COUNTY ROAD DEPT. OR CALIF. STATE HIGHWAY REQUIREMENTS IN ACCORDANCE WITH PERMITS.
10. ENCASE FOUR FEET OF SEWER AT POINTS OF INTERFERENCE WITH POLES, CASE III, S-177, IF POWER POLES ARE WITHIN 5' OF SEWER.
11. HOUSE LATERALS TO BE CONSTRUCTED WITH INTERTS AT PROPERTY LINE 6 FEET BELOW CURB GRADE EXCEPT AS NOTED.
12. ALL STRUCTURES SHALL BE BRICK SEWER STRUCTURES, S-104, PER DETAIL SPECIFICATIONS ANNEX 11 PER S-1-125 OR S-1-178 PER DETAIL SPECIFICATIONS ANNEX 11 LOCATIONS APPROVED BY THE COUNTY ENGINEER.
13. FOR ALLOWABLE LEAKAGE TEST USE FORMULA NO. 10, SPEC. S, SEC. 14.
14. MANHOLE TOPS IN UNIMPROVED RIGHTS-OF-WAY TO BE SIX INCHES ABOVE FINISHED GRADE.
15. THE CONTRACTOR SHALL NOTIFY THE CONSTRUCTION DIVISION BY TELEPHONE, MADISON 9-4747, 24 HOURS IN ADVANCE AT LEAST TWENTY-FOUR HOURS BEFORE STARTING ANY WORK UNDER THIS CONTRACT.
16. STANDARD SPECIFICATIONS 20120 AND 20121 PER 1962 SHALL APPLY IN THE CONSTRUCTION OF THIS PROJECT.
17. HOUSE LATERALS FROM CHIMNEYS SHALL NOT HAVE AN ANGLE OF LESS THAN 45° WITH THE MAIN LINE SEWER.
18. IF DURING THE COURSE OF CONSTRUCTION IT IS DETERMINED THAT THERE IS LESS THAN FOUR FEET OF COVER OVER THE TOP OF A MAIN LINE OR HOUSE LATERAL V.C.P. SEWER WHICH IS NOT INDICATED ON THE PLANS, THE CONTRACTOR SHALL ENCASE PER S-1-178, CASE III, UNLESS OTHERWISE APPROVED BY THE COUNTY ENGINEER.
19. ALL STATE AND LOCAL TRENCH SAFETY ORDERS WILL BE RIGIDLY ENFORCED.
20. FIGURES IN CIRCLES AT ENDS OF HOUSE LATERALS INDICATE DEPTH BELOW CURB GRADE.

BENCH MARK: S.G. 1050
Beginning @ Int. Aguirre St. & Gallo St. Thence 0.2 Mi. Sth. along Gallo St. to Prop. E. Right of Way Thence S 23° W. along E. Right of Way 12.50' N. 10° 3/4' W. 12' 0" to Elev. 634.030 Oberlin Quad 1955

NO CONNECTIONS FOR THE DISPOSAL OF INDUSTRIAL WASTES SHALL BE MADE TO SEWERS SHOWN ON THESE DRAWINGS WITHOUT WRITTEN PERMISSION FROM THE CHIEF ENGINEER AND GENERAL MANAGER OF THE COUNTY SANITATION DISTRICTS.

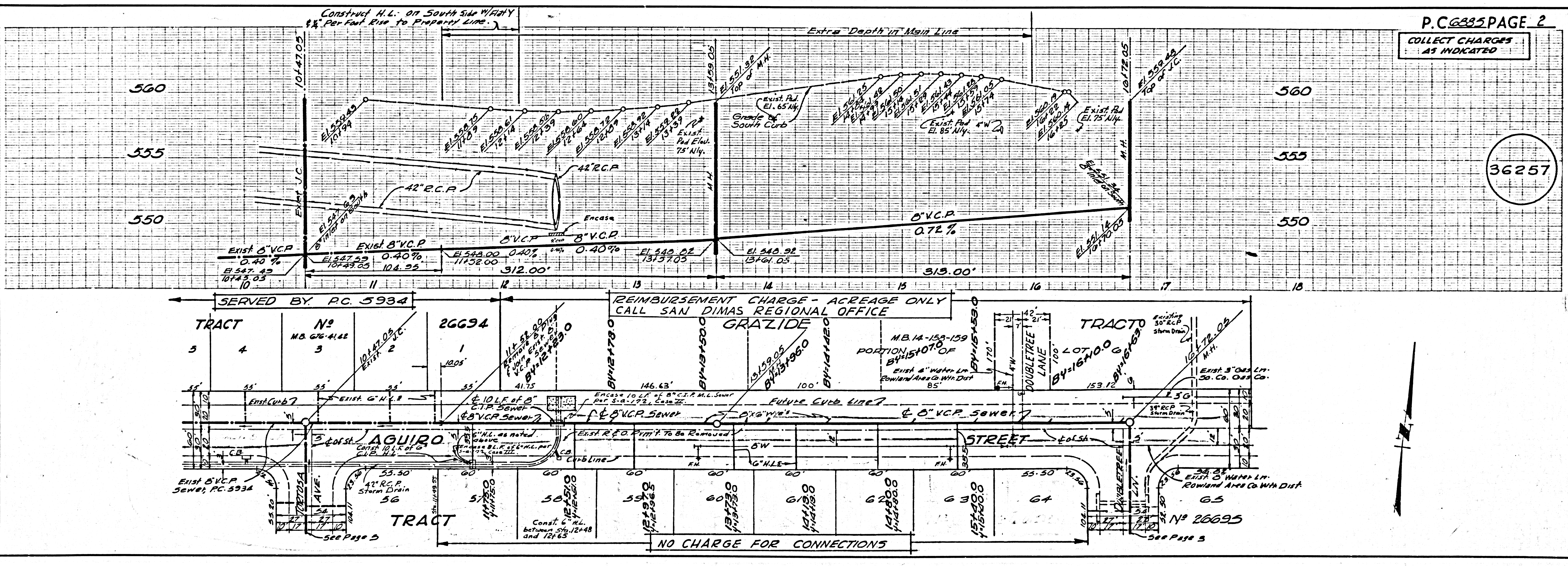
COLLECT CHARGES AS INDICATED
Oliver J. Christian

GRADES TO WHICH THIS IMPROVEMENT IS TO BE CONSTRUCTED ARE SHOWN ON PLANS AND PROFILES. GRADE POINTS FOR TOP OF CURBS, CENTER LINE OF STREETS, OR CENTER LINE OF ALLEYS ARE SHOWN BY CIRCLES ON PROFILES. AT ALL POINTS BETWEEN DESIGNATED POINTS THE GRADE SHALL BE ESTABLISHED SO AS TO CONFORM TO A STRAIGHT LINE DRAWN BETWEEN SAID DESIGNATED POINTS. ELEVATIONS ARE IN FEET ABOVE U.S.C. & G.S. SEA LEVEL DATUM OF 1929. THIS DRAWING AND THE DATA HEREON ARE HEREBY MADE A PART OF THE SPECIFICATIONS. WORK SHALL BE CONSTRUCTED ACCORDING TO SPECIFICATIONS ON FILE IN THE OFFICE OF THE COUNTY ENGINEER AND SHALL BE PROSECUTED ONLY IN THE PRESENCE OF THE COUNTY ENGINEER. BEFORE WORK CAN BE STARTED, THE CONTRACTOR MUST OBTAIN A PERMIT TO EXCAVATE IN COUNTY STREETS FROM THE L.A. COUNTY ROAD DEPT., DISTRICT OFFICE NO. 11 AND PAY A FEE TO THE COUNTY ENGINEER ROOM 300 COUNTY ENGINEER BLDG. PER ST. L.A. OF SANITATION PERMITS. APPROVAL OF THIS PLAN BY THE COUNTY OF LOS ANGELES DOES NOT CONSTITUTE A REPRESENTATION AS TO THE ACCURACY OF THE LOCATION OF OR THE EXISTENCE OR NON-EXISTENCE OF ANY UNDERGROUND UTILITY PIPE, OR STRUCTURE WITHIN THE LIMITS OF THIS PROJECT. THIS NOTE APPLIES TO ALL PAGES. IF WORK IS TO BE DONE IN A STATE HIGHWAY, A PERMIT MUST BE OBTAINED FROM THE STATE OF CALIFORNIA, DIVISION OF HIGHWAYS, 120 SOUTH SPRING STREET.

COUNTY OF LOS ANGELES, CALIFORNIA

APPROVED BY: JOHN A. LAMBE, COUNTY ENGINEER
APPROVED BY: [Signature] CHIEF ENGINEER
APPROVED BY: [Signature] ASSISTANT SANITATION ENGINEER
CHECKED BY: [Signature] 8-3-64
OFFICE OF COUNTY ENGINEER, REG. C. E. NO. 11636

JN 0362. 60

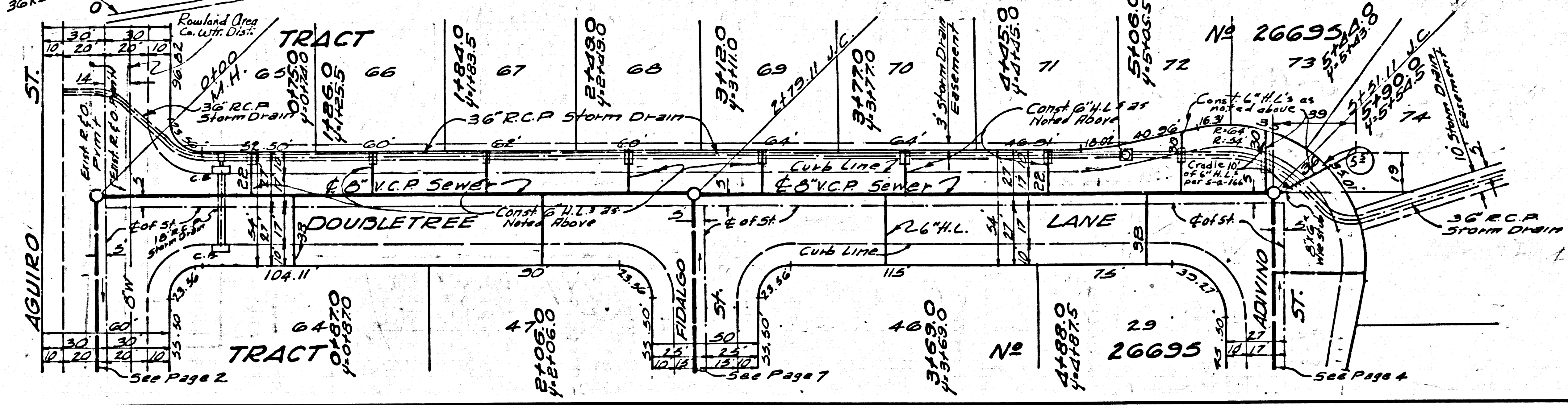
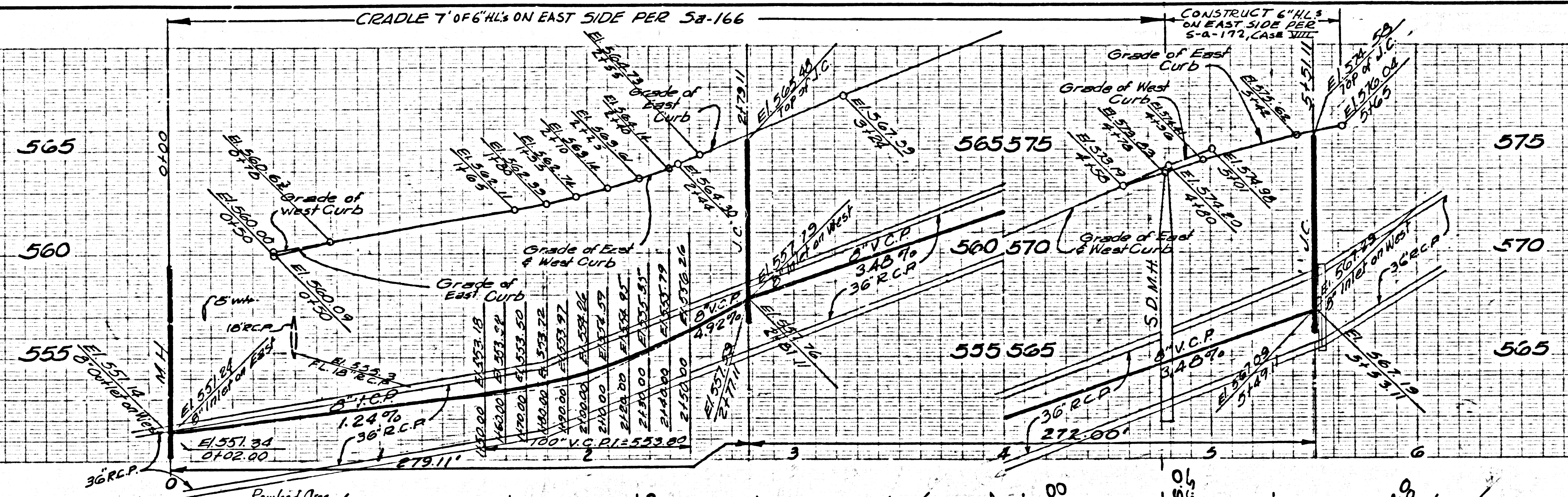


P.C. 6885 PAGE 2
COLLECT CHARGES AS INDICATED

36257

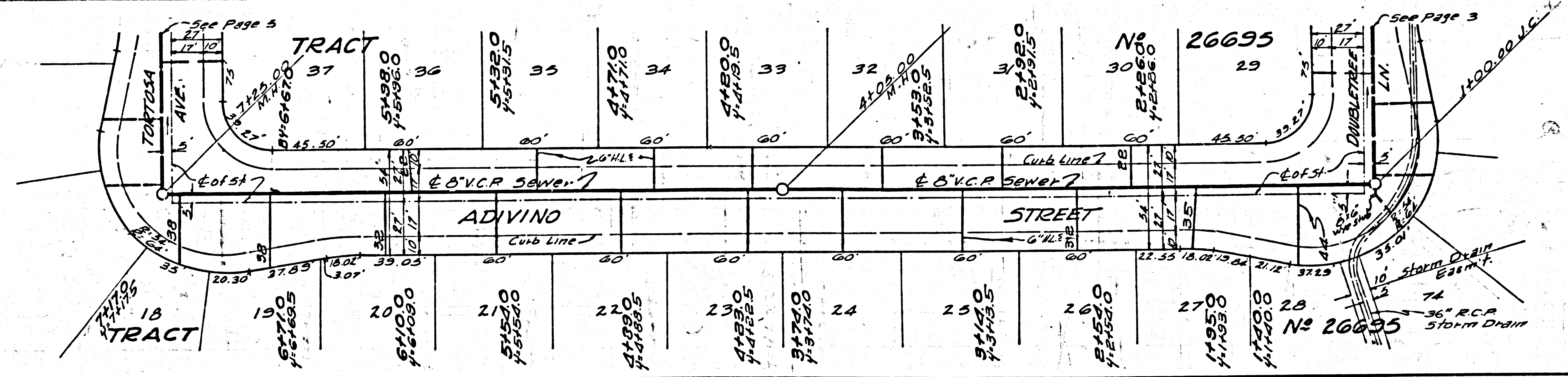
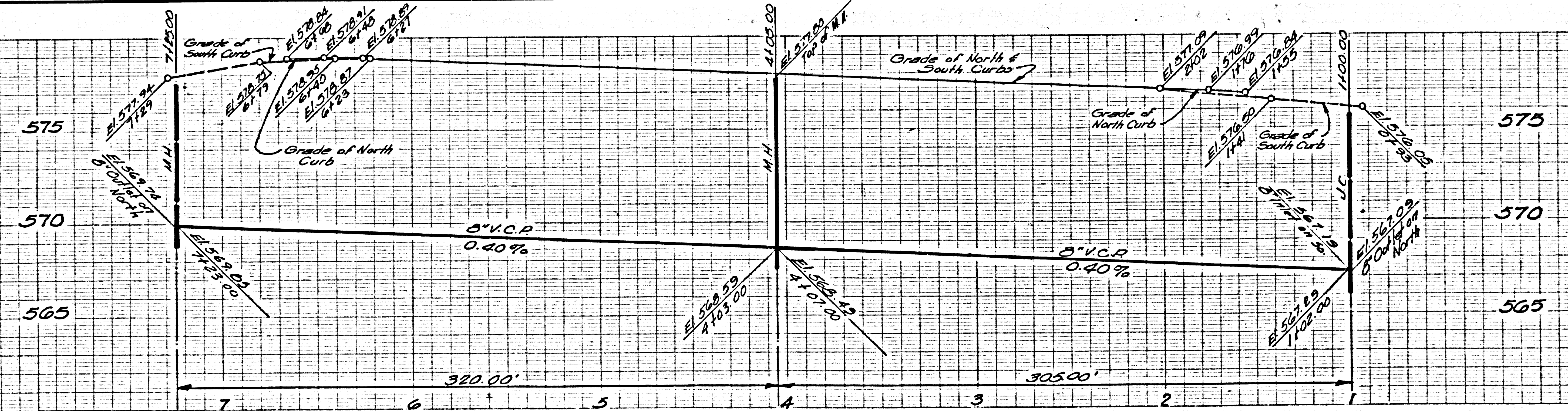
NO CHARGE FOR CONNECTIONS

36258



NO CHARGE FOR CONNECTIONS

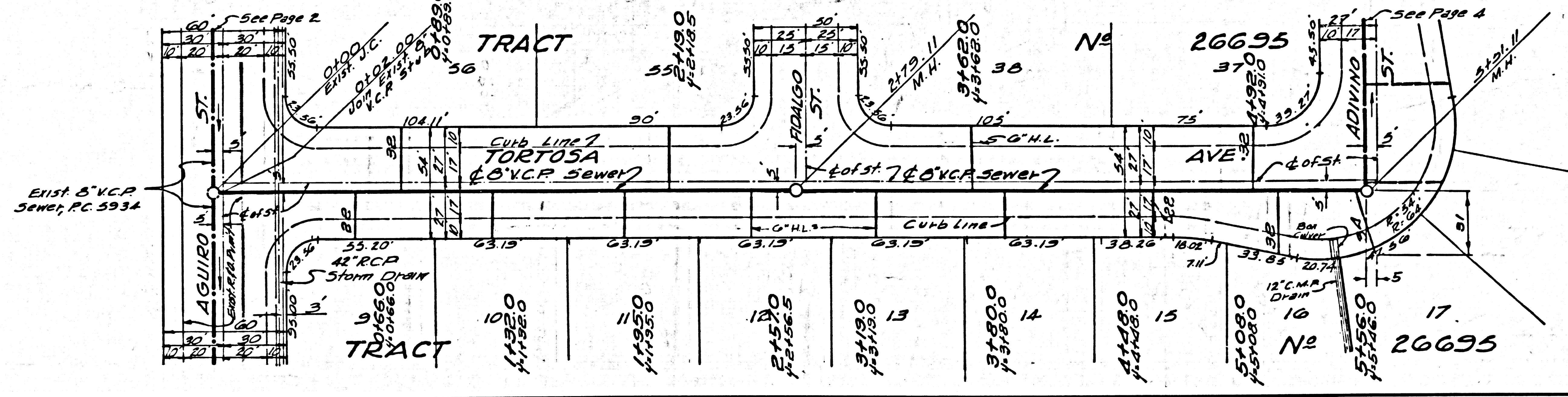
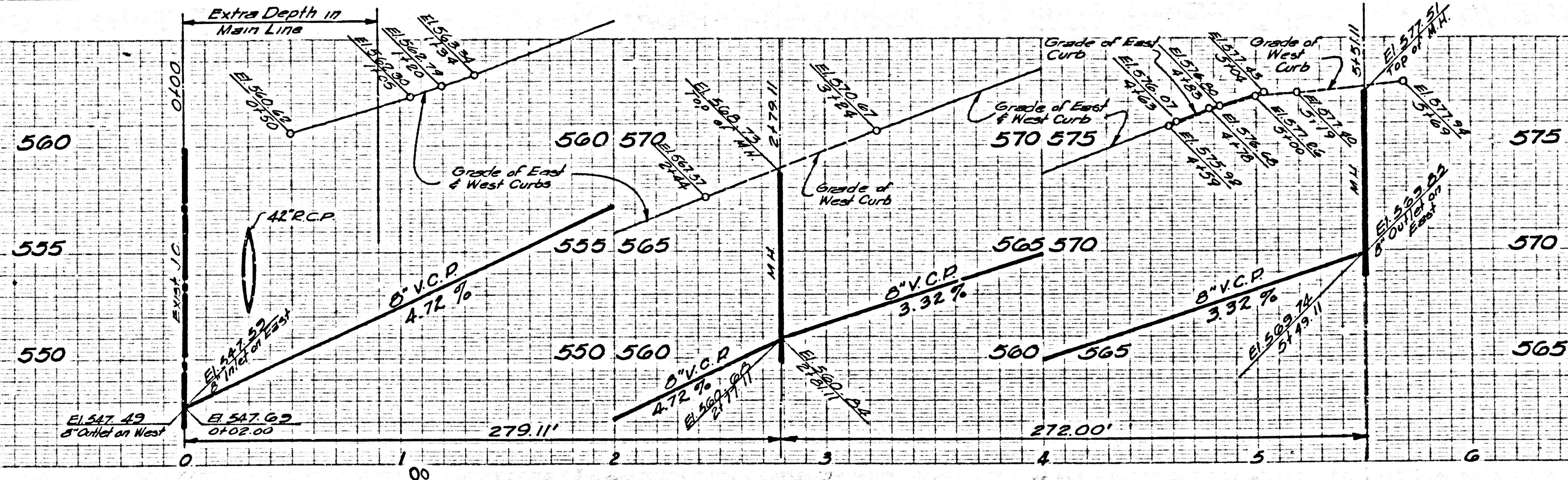
36259



6885 34 6885 34 6885 34 6885 34

NO CHARGE FOR CONNECTIONS

36260



COLLECT CHARGES AS INDICATED

36261

