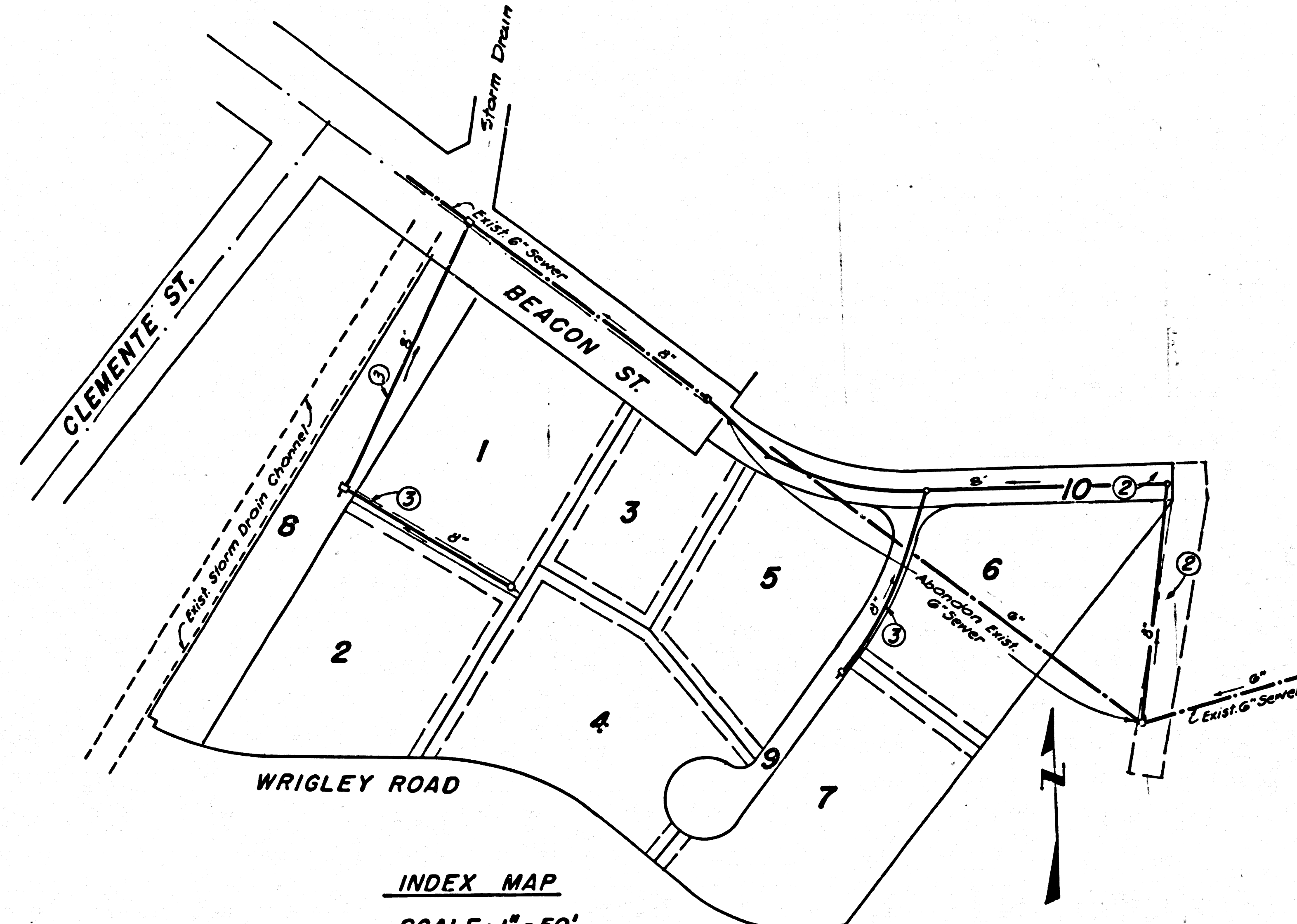


B.M. U.S.C.B.G. NO. 1 ELEV. 10.75

Standard elev. just inside the curb line on the southeast corner of Clarissa Avenue and Crescent Avenue El. above mean lower low water 1925



INDEX MAP
SCALE: 1" = 50'
TRACT NO. 28830
PC. 6887

AVALON BLDG. DIST. NO. 12.01

PROFILE ALIGNMENT AND GRADE OF
SANITARY SEWERS PAGE 1
TO BE CONSTRUCTED IN

TRACT NO. 28830 **34784**
PRIVATE CONTRACT NO. 6887

W.S. 29

2 SHEETS, 3 PAGES

SCALE: VERT. 1" = 4'
HORIZ. 1" = 40' FEB. 1, 1964

PREPARED IN THE OFFICES OF
ARTHUR BENEDICT ASSOCIATES
3497 CAHUENGA WEST L.A. 28

By: *Arthur Benedict*
REG. C. E. NO. 5489

FOR LEGEND SEE PLAN NO. S-64

- PROVIDE STAKES ON THE PROPERTY LINE OR PROPERTY LINES PRODUCED AT RIGHT ANGLES TO THE SEWER LINE AT THE CENTER LINE OF EACH MANHOLE.
- NO REPRESENTATIVE OF THE CITY ENGINEER WILL SURVEY OR LAY OUT ANY PORTION OF THE WORK.
- THE PRIVATE ENGINEER SHALL FURNISH THE CITY ENGINEER WITH GRADE SHEETS AND STATIONING FOR ALL HOUSE LATERALS AND Y BRANCHES AND SHALL PROVIDE STAKES FOR THEM AT THEIR PROPER LOCATIONS WITH STATIONING PLAINLY MARKED. ALL HOUSE LATERALS SHALL BE CONSTRUCTED IN A STRAIGHT ALIGNMENT AT RIGHT ANGLES FROM THE MAIN LINE SEWER EXCEPT AS SHOWN ON THE PLANS. HOUSE LATERALS FROM CHIMNEYS SHALL NOT HAVE AN ANGLE OF LESS THAN 45° WITH THE MAIN LINE SEWER. ANY CHANGE IN ALIGNMENT SHALL BE REQUESTED IN WRITING BY THE PRIVATE ENGINEER.
- THE PRIVATE ENGINEER SHALL FURNISH THE HOUSE LATERAL DEPTH AT THE PROPERTY LINE BELOW THE TOP OF CURB ELEVATION FOR EACH HOUSE LATERAL ON THE GRADE SHEET.
- NO REVISIONS SHALL BE MADE IN THESE PLANS WITHOUT THE APPROVAL OF THE CITY ENGINEER.
- THE CONTRACTOR SHALL NOTIFY THE CONSTRUCTION DIVISION BY TELEPHONE, MADISON 9-4747, EXT. 8155, AT LEAST TWENTY-FOUR HOURS BEFORE STARTING ANY WORK UNDER THIS CONTRACT.
- MANHOLES SHALL BE BRICK SEWER STRUCTURES PER S-104. PRECAST CONCRETE MANHOLES PER S-135 OR S-173 MAY BE USED AS AN ALTERNATE IN LOCATIONS APPROVED BY THE CITY ENGINEER. EXCEPT AS NOTED.
- USE STANDARD MANHOLE FRAMES AND COVERS, S-117, EXCEPT AS NOTED.
- MANHOLE TOPS IN UNIMPROVED RIGHTS-OF-WAY TO BE SIX INCHES ABOVE FINISHED GRADE.
- USE EXTRA STRENGTH PIPE. ALL PIPE IS STANDARD DEPTH EXCEPT AS NOTED.
- USE MECHANICAL COMPRESSION JOINTS FOR ALL V.C.P. JOINTS PER SPEC'S, SECS. 34 & 48.
- DELETE
- IF A POWER POLE IS WITHIN THREE FEET OF THE SEWER, THE SEWER SHALL BE ENCASED, PER S-172, CASE II, TWO FEET ON EACH SIDE FROM THE POINT OF INTERFERENCE.
- IF DURING THE COURSE OF CONSTRUCTION IT IS DETERMINED THAT THERE IS LESS THAN FOUR FEET OF COVER OVER THE TOP OF A MAIN LINE OR HOUSE LATERAL V.C.P. SEWER WHICH IS NOT INDICATED ON THE PLANS, THE PIPE SHALL BE ENCASED PER S-172, CASE II, UNLESS OTHERWISE APPROVED BY THE CITY ENGINEER.
- HOUSE LATERALS TO BE CONSTRUCTED AT A 1/2" RISE PER FOOT TO PROPERTY LINE
- RESURFACE ALL TRENCHES WITHIN PAVED AREAS TO MEET CITY ROAD DEPT. OR CALIFORNIA STATE HIGHWAY REQUIREMENTS IN ACCORDANCE WITH PERMITS.
- FOR ALLOWABLE LEAKAGE TEST USE FORMULA NO. 2, SPEC. SEC. 54.
- 2' LENGTH PIPE SHALL BE USED ON ALL CURVES
- ALL STATE AND LOCAL TRENCH SAFETY ORDERS WILL BE RIGIDLY ENFORCED
- CONTRACTOR TO MAINTAIN SERVICE ON EXISTING 6" SEWER UNTIL REPLACED BY 8" SEWER.

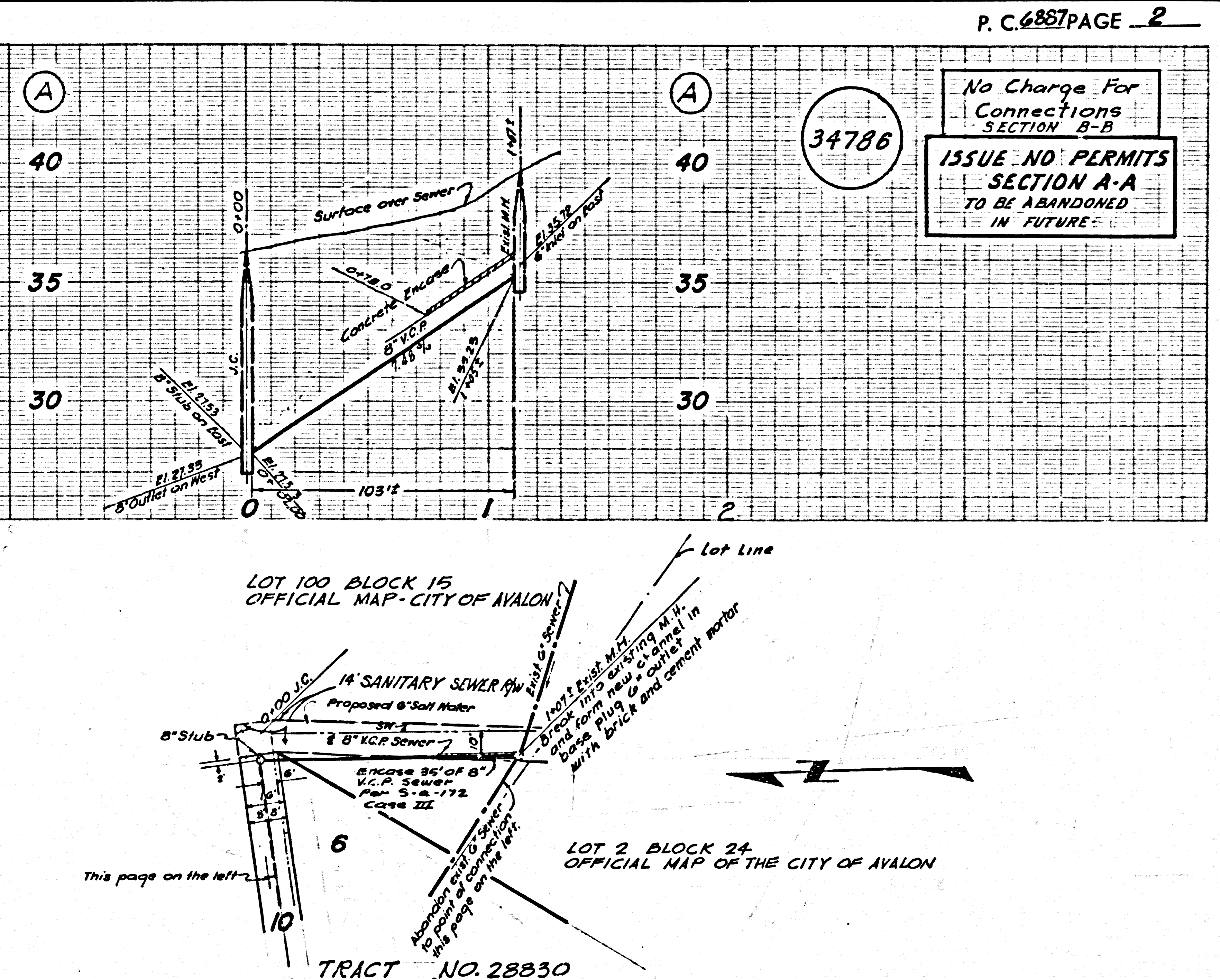
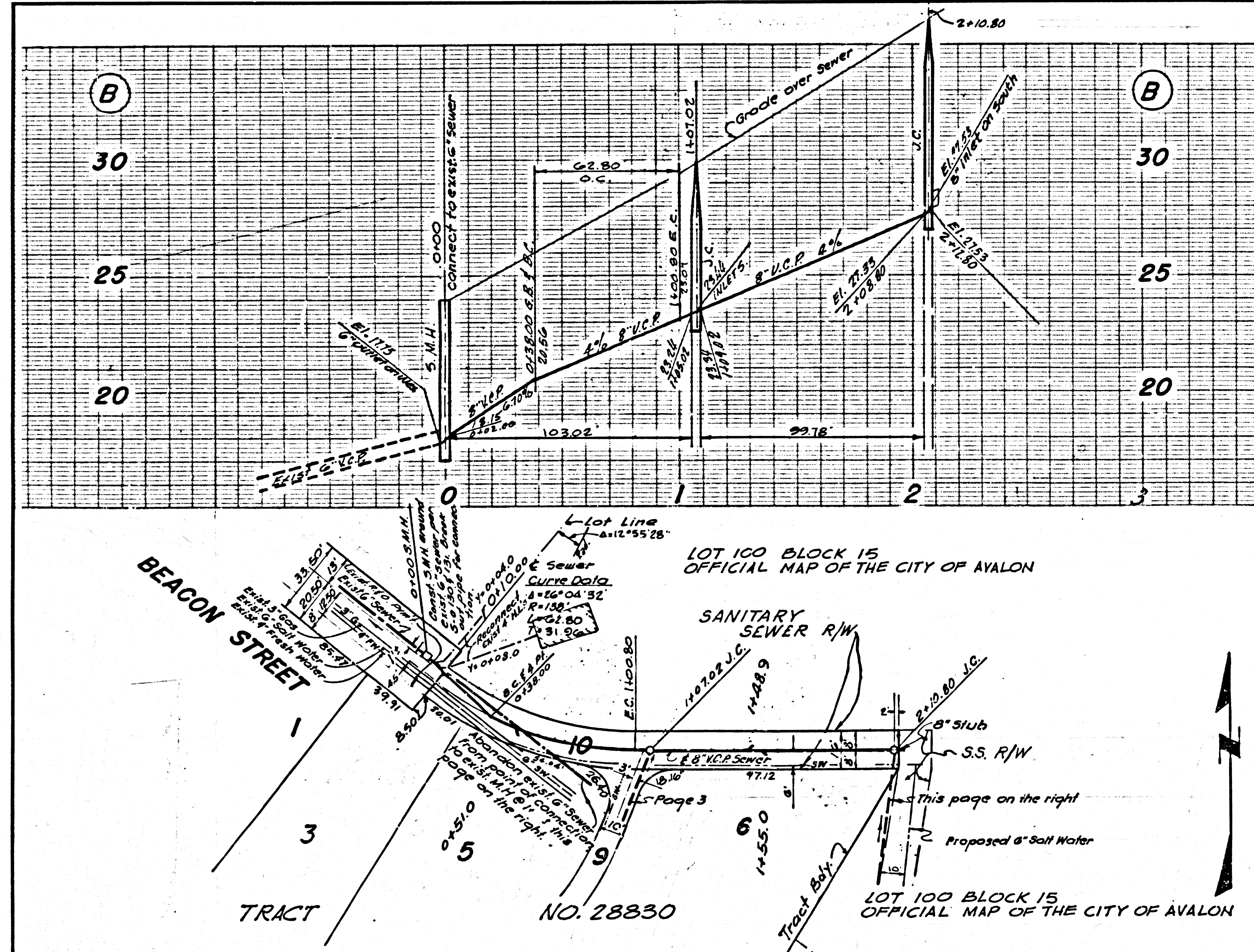
Plans Revised to "As built" sheets 1-3
VORREIS-TRINDLE-NELSON
James E. Whittleton
James E. Whittleton R.C.E. 14385

APPROVED:
COLLECT CHARGES AS INDICATED
L. Curtis 5-6-64

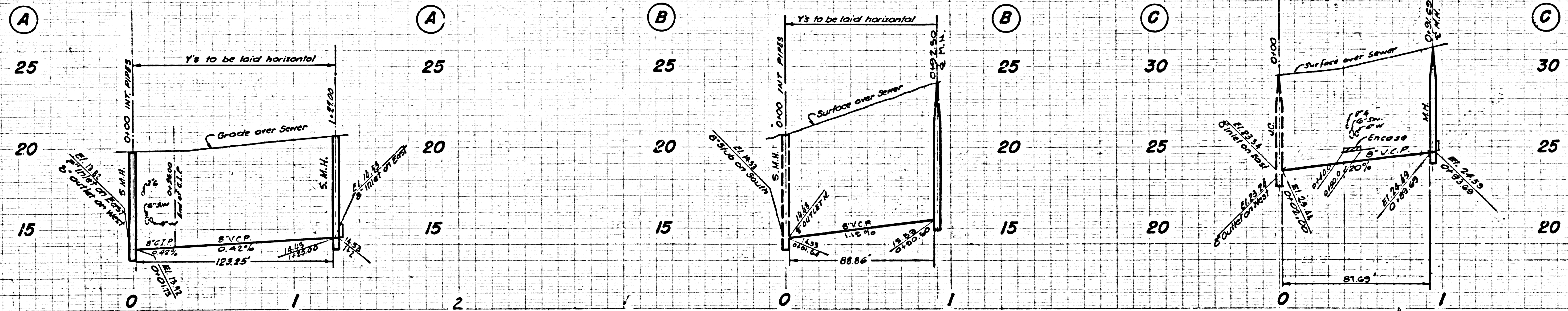
NOTE:
GRADES TO WHICH THIS IMPROVEMENT IS TO BE CONSTRUCTED ARE SHOWN ON PLANS AND PROFILES. GRADE POINTS FOR TOP OF CURBS, CENTER LINE OF STREETS, OR CENTER LINE OF ALLEYS ARE SHOWN BY CIRCLES ON "PROFILES". AT ALL POINTS BETWEEN DESIGNATED POINTS THE GRADE SHALL BE ESTABLISHED SO AS TO CONFORM TO A STRAIGHT LINE DRAWN BETWEEN SAID DESIGNATED POINTS. ELEVATIONS ARE IN FEET ABOVE U.S.C. & G.S. SEA LEVEL DATUM OF 1929.
THIS DRAWING AND THE DATA HEREON ARE HEREBY MADE A PART OF THE SPECIFICATIONS.
WORK SHALL BE CONSTRUCTED ACCORDING TO STANDARD SPECIFICATIONS DATED MAY 26, 1964 ON FILE IN THE OFFICE OF THE CITY ENGINEER AND SHALL BE PROSECUTED ONLY IN THE PRESENCE OF THE CITY ENGINEER.
BEFORE WORK CAN BE STARTED, THE CONTRACTOR MUST OBTAIN A PERMIT TO EXCAVATE IN CITY STREETS FROM THE CITY ROAD DEPT., DISTRICT OFFICE NO. 1 AND PAY A FEE TO THE CITY ENGINEER, ROOM 300, CITY ENGINEERING BUILDING, 100 WEST SECOND STREET OR PALOM VERDE, GARDENHILL WALK, REGIONAL OFFICE, SUFFICIENT TO COVER THE COST OF CONSTRUCTION INSPECTION AND RECORD PLANS.
APPROVAL OF THIS PLAN BY THE CITY OF AVALON DOES NOT CONSTITUTE A REPRESENTATION AS TO THE ACCURACY OF THE LOCATION OF OR THE EXISTENCE OR NON-EXISTENCE OF ANY UNDERGROUND UTILITY PIPE, OR STRUCTURE WITHIN THE LIMITS OF THIS PROJECT. THIS NOTE APPLIES TO ALL PAGES OF THIS PLAN.
IF WORK IS TO BE DONE IN A STATE HIGHWAY, A PERMIT MUST BE OBTAINED FROM THE STATE OF CALIFORNIA, DIVISION OF HIGHWAYS, 120 SOUTH SPRING STREET, LOS ANGELES, CALIFORNIA.

CITY OF AVALON, CALIFORNIA
JOHN A. LAMBIE, CITY ENGINEER
APPROVED BY: *Rose E. K...* ASSISTANT SANITATION ENGINEER
APPROVED BY: *Richard J. ...* CITY OF AVALON
CHECKED BY: *Ralph Schaf...* REG. C.E. NO. 13926

J.N. 3714.04



P.C. 6887 PAGE 2
No Charge For Connections SECTION A-B
ISSUE NO PERMITS SECTION A-A TO BE ABANDONED IN FUTURE
34786



No Charge For Connections

34785

