

Approved

PLAN & PROFILE OF  
**SANITARY SEWERS**  
 DESIGNED UNDER  
**P.C. 6897**

ONE SHEET W.S. 24 FEB., 1964  
 SCALES: HORIZ 1"=50', VERT. 1"=5'

COUNTY OF LOS ANGELES, CALIFORNIA  
 APPROVED, JOHN A. LAMBIE, COUNTY ENGINEER

By James K. ... R.C.E. 7460  
 ASST. SANITATION ENGINEER

APPROVED, J. D. PARKHURST, CHIEF ENGINEER  
 COUNTY SANITATION DISTRICT NO. 5

By J. P. ...  
 OFFICE ENGINEER

- NOTES**
1. APPROVAL OF THIS PLAN BY THE COUNTY OF LOS ANGELES DOES NOT CONSTITUTE A REPRESENTATION AS TO THE ACCURACY OF THE LOCATION OF OR THE EXISTENCE OR NON-EXISTENCE OF ANY UNDERGROUND UTILITY PIPE, OR STRUCTURE WITHIN THE LIMITS OF THIS PROJECT.
  2. CONTRACTOR SHALL NOTIFY THE CONSTRUCTION AND STORM DRAIN DIVISION BY TELEPHONE, MADISON 9-4747 EXT. 8151 AT LEAST TWENTY-FOUR HOURS BEFORE STARTING ANY WORK UNDER THIS CONTRACT.
  3. THIS WORK SHALL BE IN ACCORDANCE WITH THE COUNTY'S SPECIFICATIONS AND REQUIREMENTS INsofar AS MATERIALS AND METHODS OF CONSTRUCTION ARE CONCERNED.

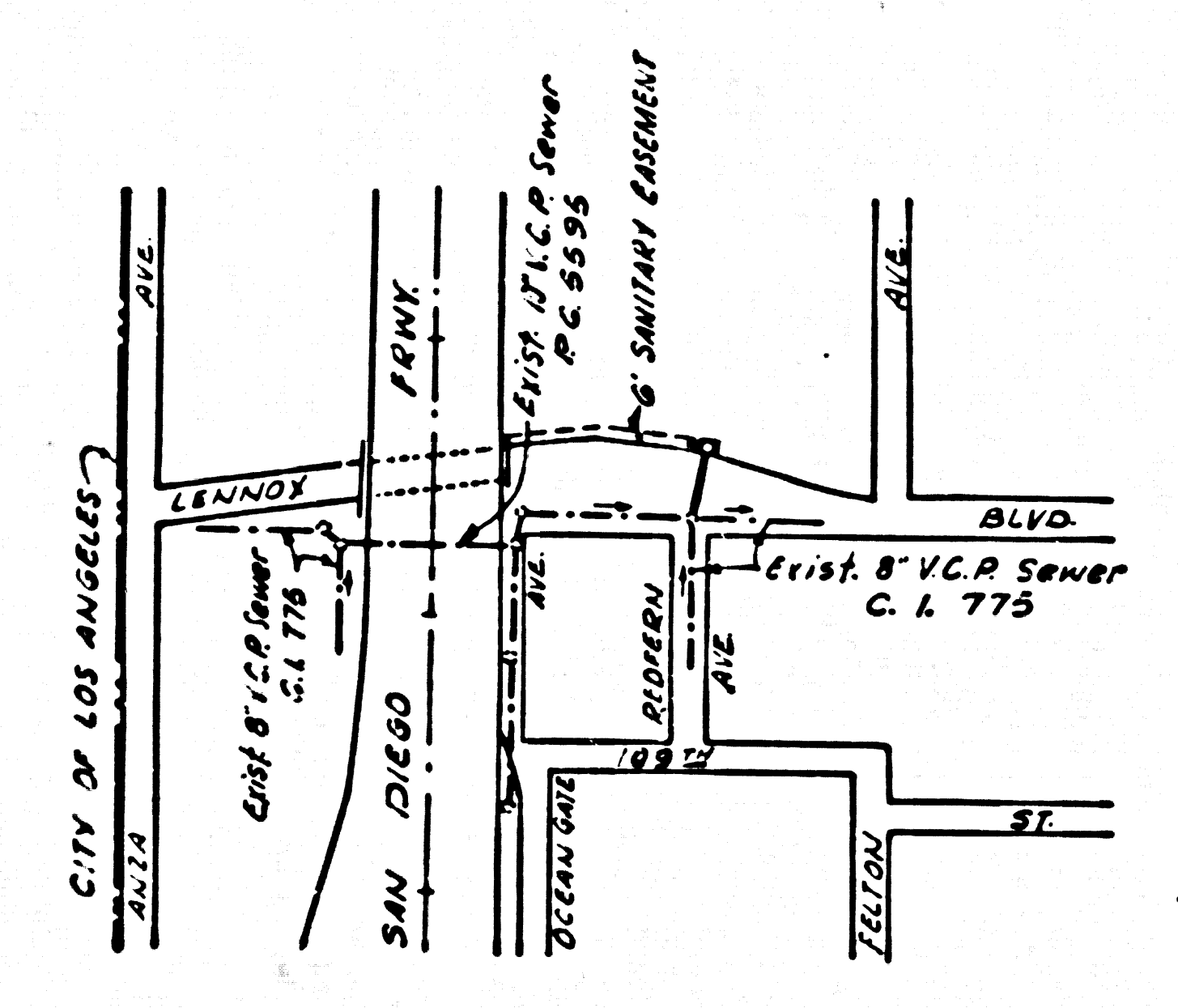
NO CONNECTIONS FOR THE DISPOSAL OF INDUSTRIAL WASTES SHALL BE MADE TO SEWERS SHOWN ON THESE DRAWINGS WITHOUT WRITTEN PERMISSION FROM THE CHIEF ENGINEER AND GENERAL MANAGER OF THE COUNTY SANITATION DISTRICTS.

36079

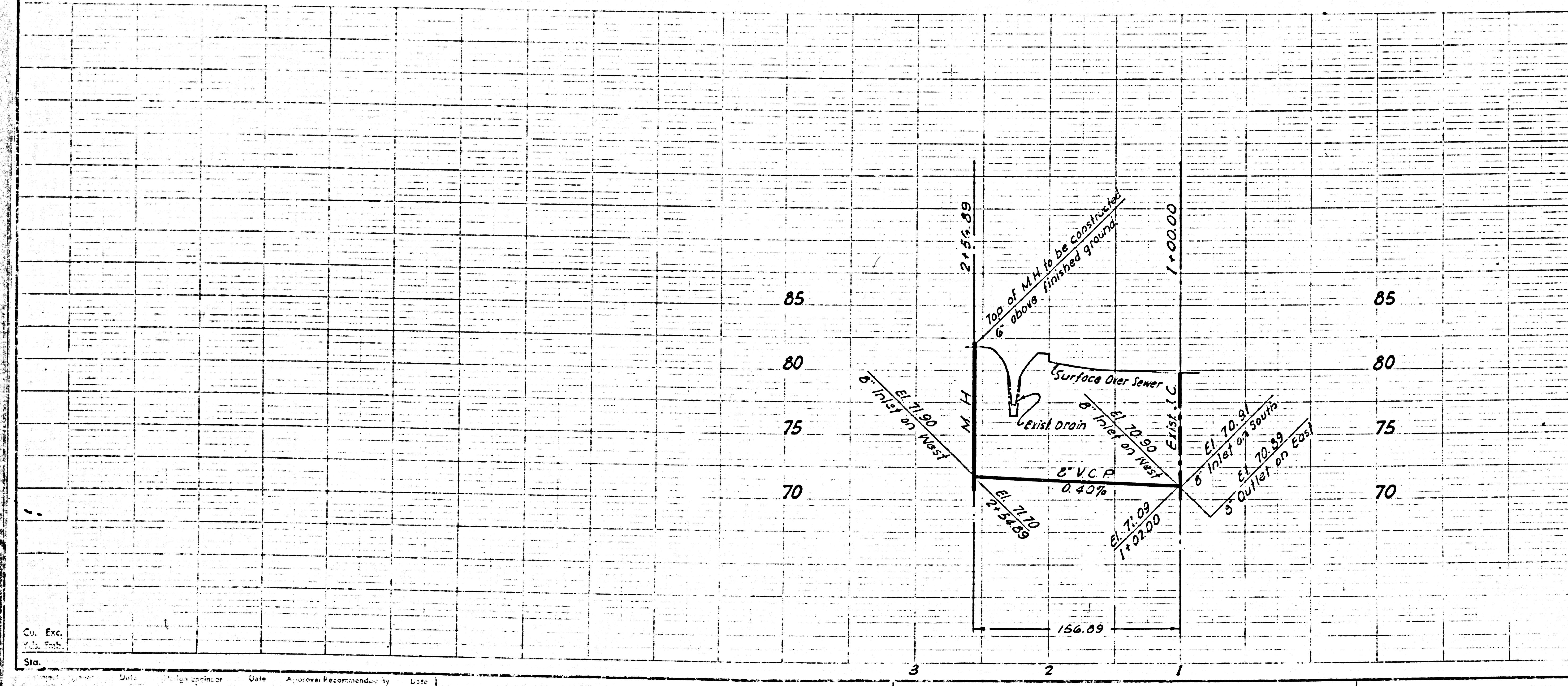
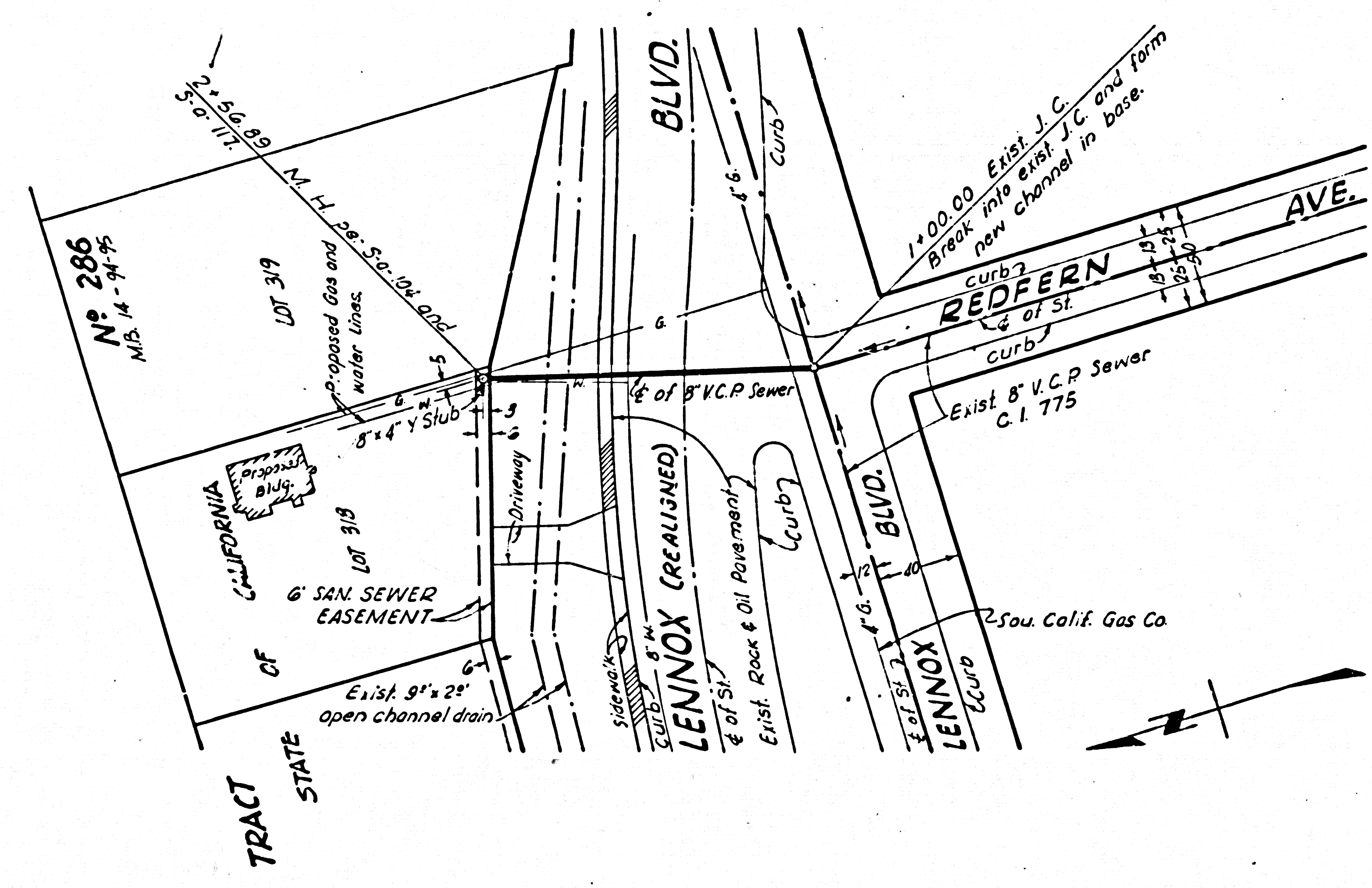
DESIGNED	HONDA
CHECKED	ESQUER

B.M. EL 8200 L. 285.3 pg. 10  
 N.E. cor. of Anza Ave & Lennox Blvd.  
 W spa. in lead 4' W & 85' N. of PP 933534 E.

36080



INDEX MAP  
 R.C. 6897  
 Scale: 1"=400'



No.	By	Date	Approved/Recommended by	List