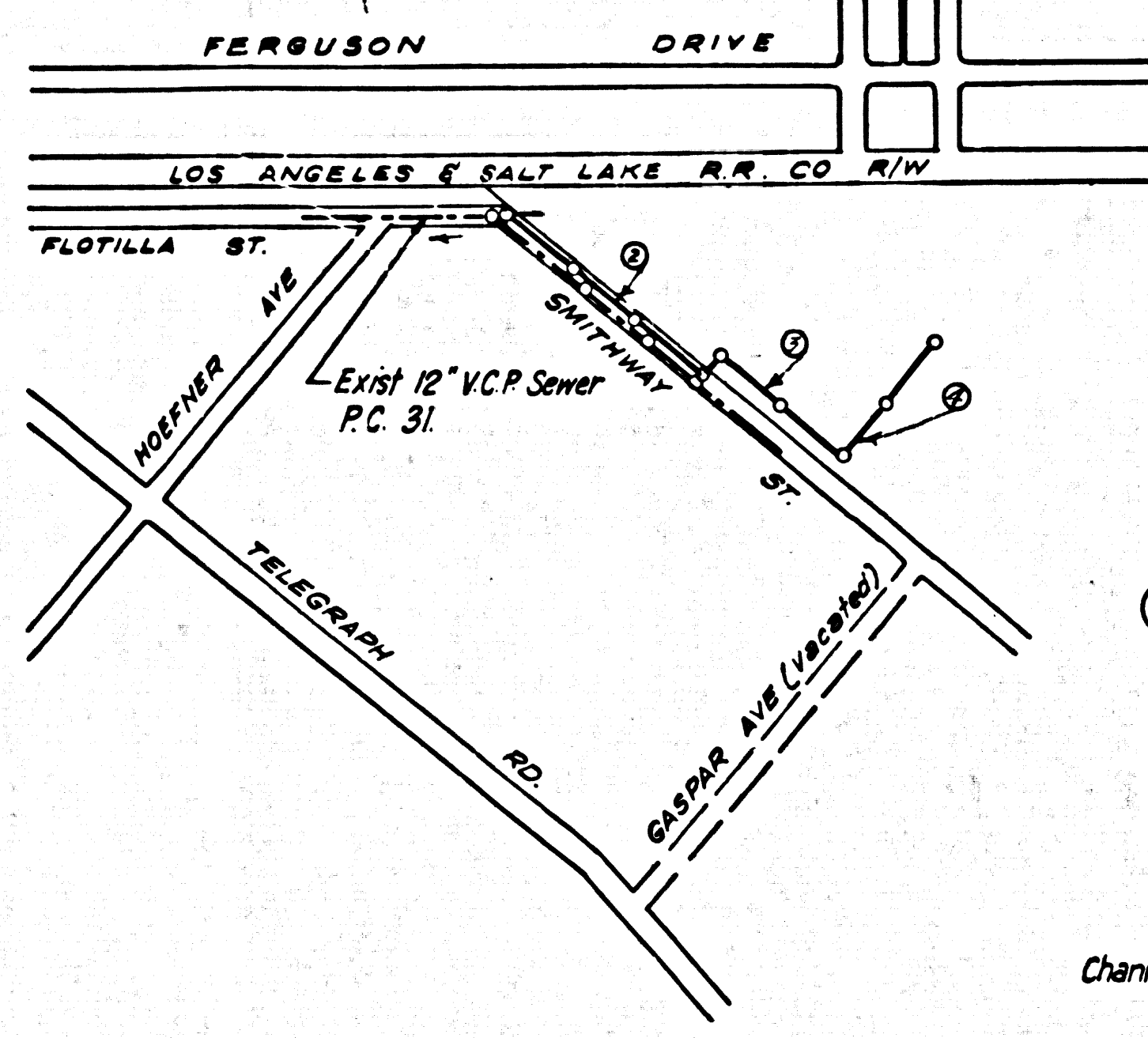


B.M. # SY 4066 ELEV. 147.233
Lead and Spike in N.E. Curb
Return of Telegraph Road and
Hoefner Ave 1/2 E of B.C.R.
RIVERA QUAD. 19 55.



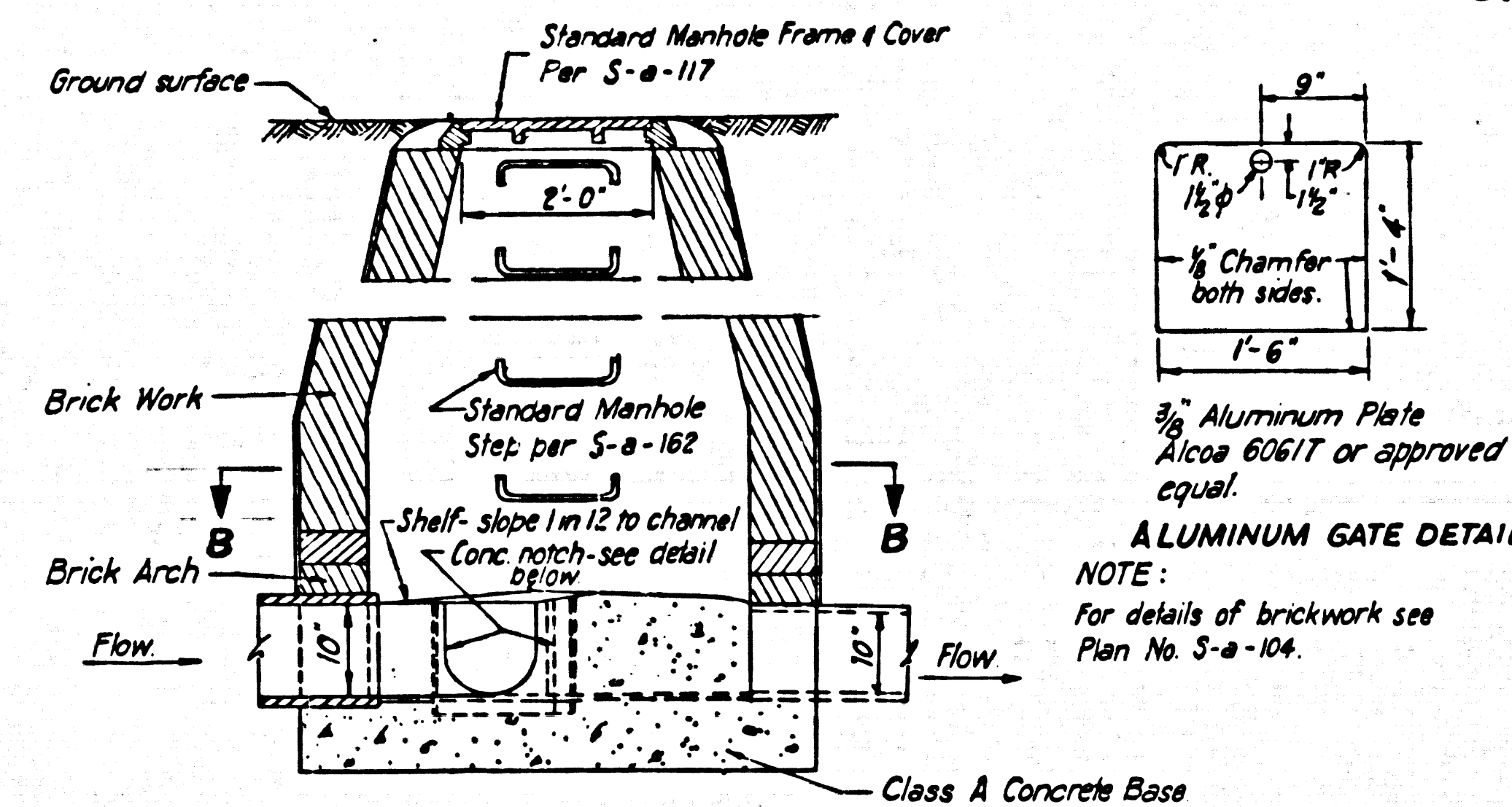
PC 6902
INDEX MAP
Scale: 1"=600'

CITY OF COMMERCE BLDG. DIST. NO. 6.01

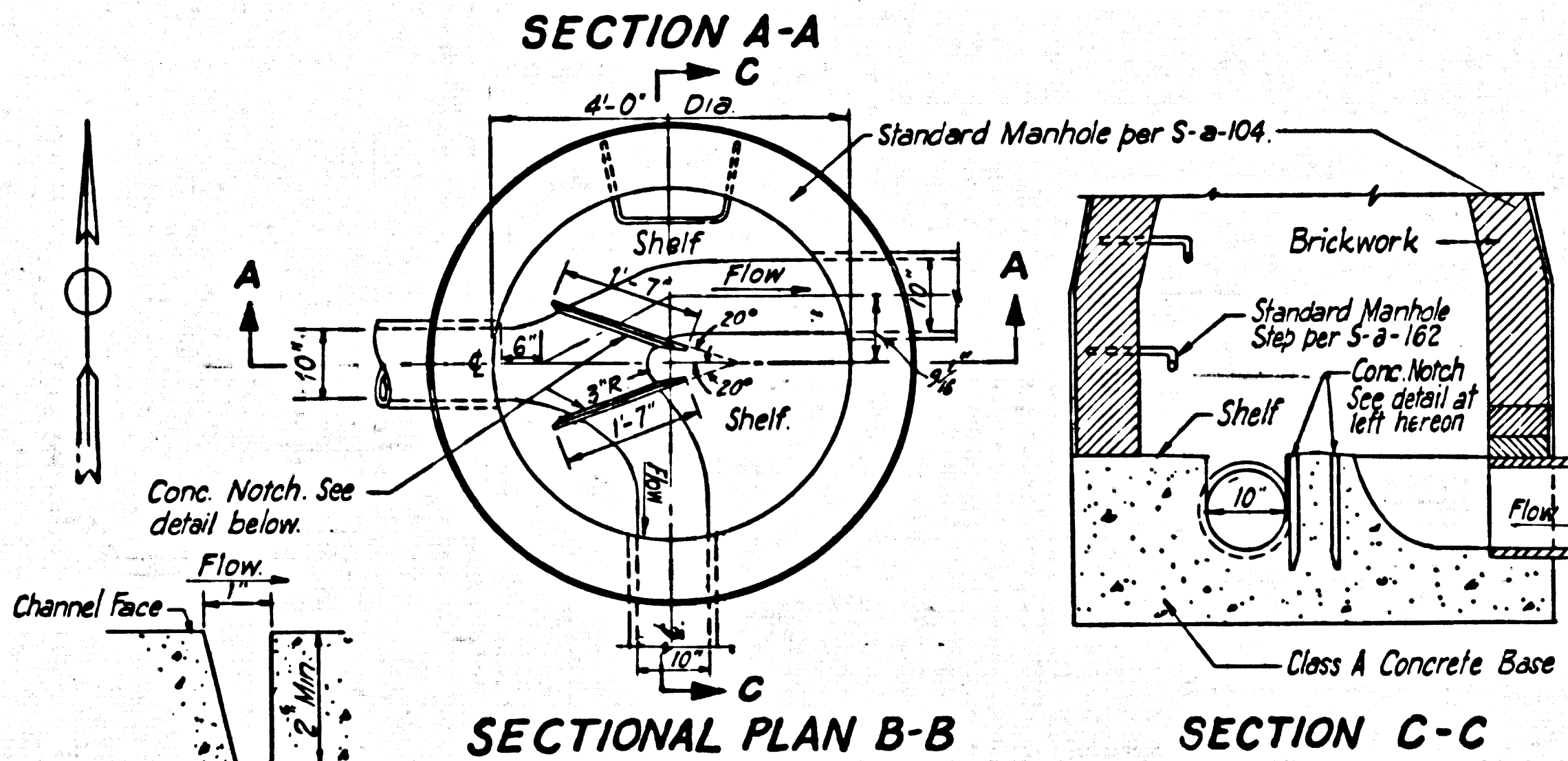
PROFILE ALIGNMENT AND GRADE OF P.C. 6902
SANITARY SEWERS PAGE 1
TO BE CONSTRUCTED IN

CHALLENGE DAIRY
PRIVATE CONTRACT NO. 6902

W.S. 36
2 SHEETS, 4 PAGES
SCALE: VERT. 1"=4' HORIZ. 1"=40'
MARCH, 1964
PREPARED IN THE OFFICES OF
DANIEL, MANN, JOHNSON & MENDENHALL.
BY: Joseph O. Brown REG. C.E. NO. 12981
FOR LEGEND SEE PLAN NO. S-64



ALUMINUM GATE DETAIL
NOTE:
for details of brickwork see
Plan No. S-a-104.



SECTION C-C

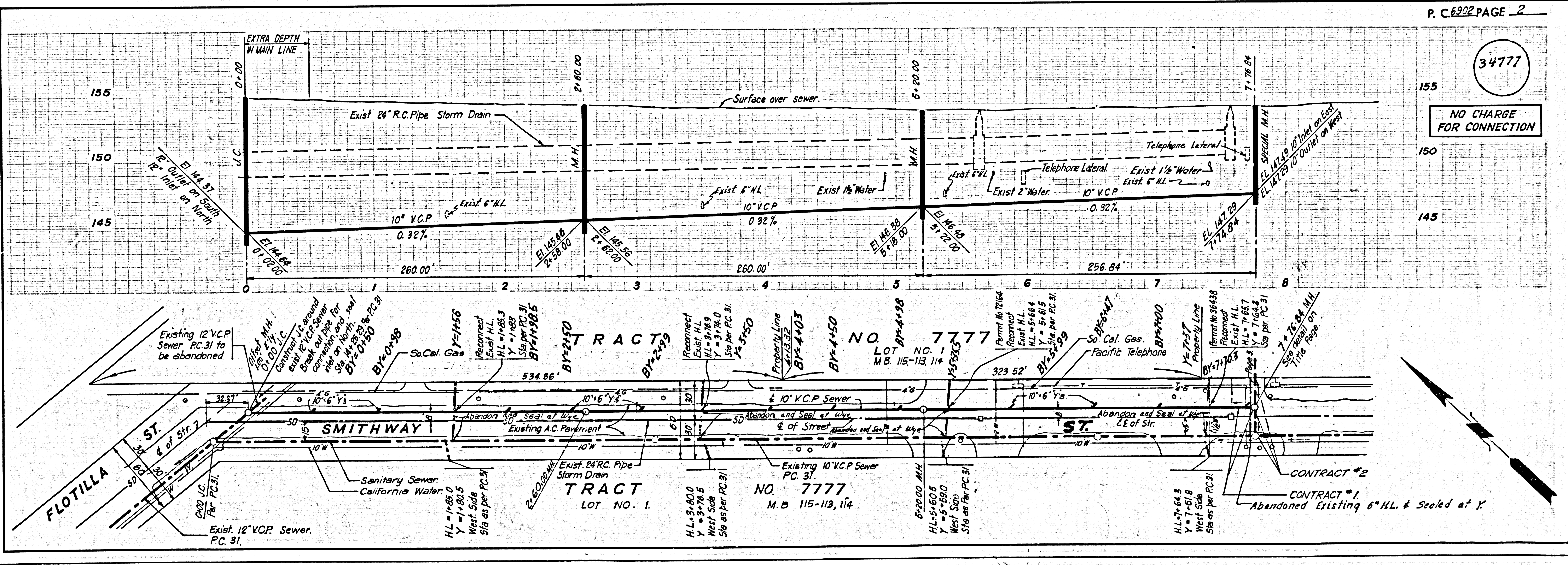
CROSS SECTION OF NOTCH
SIDES AND BOTTOM
SPECIAL MANHOLE
Sta. 7+76.84

- NOTE:
1. HOUSE STAKES ON THE PROPERTY LINE OR PROPERTY LINES PRODUCED AT RIGHT ANGLES TO THE SEWER LINE AT THE CENTER LINE OF EACH MANHOLE.
 2. NO REPRESENTATIVE OF THE CITY ENGINEER WILL SURVEY OR LAY OUT ANY PORTION OF THE WORK.
 3. THE CONTRACTOR SHALL FURNISH THE CITY ENGINEER WITH GRADE SHEETS AND STATIONING FOR ALL HOUSE LATERALS AND Y BRANCHES AND SHALL PROVIDE STAKES FOR THEM AT THEIR PROPER LOCATIONS WITH STATIONING PLAINLY MARKED. ALL HOUSE LATERALS SHALL BE CONSTRUCTED IN A STRAIGHT ALIGNMENT AT RIGHT ANGLES FROM THE MAIN LINE SEWER EXCEPT AS SHOWN ON THE PLANS. HOUSE LATERALS FROM CHIMNEYS SHALL NOT HAVE AN ANGLE OF LESS THAN 45° WITH THE MAIN LINE SEWER. ANY CHANGE IN ALIGNMENT SHALL BE INDICATED IN WRITING BY THE PRIVATE ENGINEER.
 4. THE PRIVATE ENGINEER SHALL FURNISH THE HOUSE LATERAL DEPTH AT THE PROPERTY LINE BELOW THE TOP OF CURB ELEVATION FOR EACH HOUSE LATERAL ON THE GRADE SHEET.
 5. NO REVISIONS SHALL BE MADE IN THESE PLANS WITHOUT THE APPROVAL OF THE CITY ENGINEER.
 6. THE CONTRACTOR SHALL NOTIFY THE CONSTRUCTION DIVISION BY TELEPHONE, MADISON 9-4747, EXT. 8152, AT LEAST TWENTY-FOUR HOURS BEFORE STARTING ANY WORK UNDER THIS CONTRACT.
 7. MANHOLES SHALL BE BUILT SEWER STRUCTURES PER S-a-104. PRECAST CONCRETE MANHOLES PER S-a-103 OR S-a-102 MAY BE USED AS AN ALTERNATE IN LOCATIONS APPROVED BY THE CITY ENGINEER.
 8. USE STANDARD MANHOLE FRAMES AND COVERS, S-a-117.
 9. USE MECHANICAL COMPRESSION JOINTS FOR ALL V.C.P. JOINTS PER SPECS., SECT. 34 & 48, S-45.
 10. WHERE EVER GROUND WATER IS ENCOUNTERED DURING THE CONSTRUCTION OF THE SEWERS, THE V.C.P. JOINTS SHALL BE MECHANICAL COMPRESSION JOINTS PER SPECS., SECT. 34, 42 & 45.
 11. IF A POWER POLE IS WITHIN THREE FEET OF THE SEWER, THE SEWER SHALL BE ENCASED, PER S-a-102, CASE III, TWO FEET ON EITHER SIDE FROM THE POINT OF INTERFERENCE.
 12. IF DURING THE COURSE OF CONSTRUCTION IT IS DETERMINED THAT THERE IS LESS THAN FOUR FEET OF COVER OVER THE TOP OF A MAIN LINE OR HOUSE LATERAL V.C.P. SEWER WHICH IS NOT INDICATED ON THE PLANS, THE PIPE SHALL BE ENCASED PER S-a-102, CASE III, UNLESS OTHERWISE APPROVED BY THE CITY ENGINEER.
 13. ALL STATE AND LOCAL TRAFFIC SAFETY ORDERS WILL BE RIGIDLY ENFORCED.
 14. RESURFACE ALL TRENCHES WITHIN PAVED AREAS TO MEET L.A. COUNTY ROAD DEPT. OR CALIFORNIA STATE HIGHWAY REQUIREMENTS IN ACCORDANCE WITH PERMITS.
 15. FOR ALLOWABLE LEAKAGE TEST USE FORMULA NO. 2, SPECS., SEC. 64.
 16. THE CONTRACTOR SHALL NOTIFY THE SOUTHERN CALIFORNIA GAS CO. PHONE 699-3170 KENNETH BLANCH, 72 HOURS PRIOR TO TRENCHING OPERATION FOR GAS LATERAL PRECISE LOCATING SERVICE.
 17. THE CONTRACTOR SHALL NOTIFY THE PACIFIC TELEPHONE AND TELEGRAPH COMPANY PHONE 748-0436 MR. MARY PINELLA, 72 HOURS PRIOR TO TRENCHING OPERATION FOR TELEPHONE LATERAL LOCATING SERVICE.
 18. PRIOR TO START OF TRENCHING OPERATION THE CONTRACTOR SHALL EXCAVATE AND REPOSE THE EXISTING SMITHWAY AVENUE SEWER TIE IN POINTS AT STA. 0+00 & STA. 7+76.84 TO VERIFY THE INVERT ELEVATIONS.
 19. THE CONSTRUCTION OF THE MANHOLE AT STATION 7+76.84 PAGE 2 IS INCLUDED IN CONTRACT #1. STAKE OUTS FROM THE MAINLINE AND ALL SEWER LINES DOWNSTREAM INDICATED AS SOLID LINES ON PAGE 2 ARE INCLUDED IN CONTRACT #1. CONTRACT #2 IS INDICATED ON PAGES 3 & 4.

COLLECT CHARGES
AS INDICATED
W.L. Jones 3/13/64

APPROVED: E.L. Thompson DATE: 3-13-64
INDUSTRIAL WASTE DIVISION

REVISION
ON PAGES 3A & 3B MOVED MAIN
LINE 10' SOUTHWESTERLY AWAY FROM
THE ORIGINAL PROPOSED BUILDING SITE.
APPROVED: W.L. Jones DATE: 5-25-64

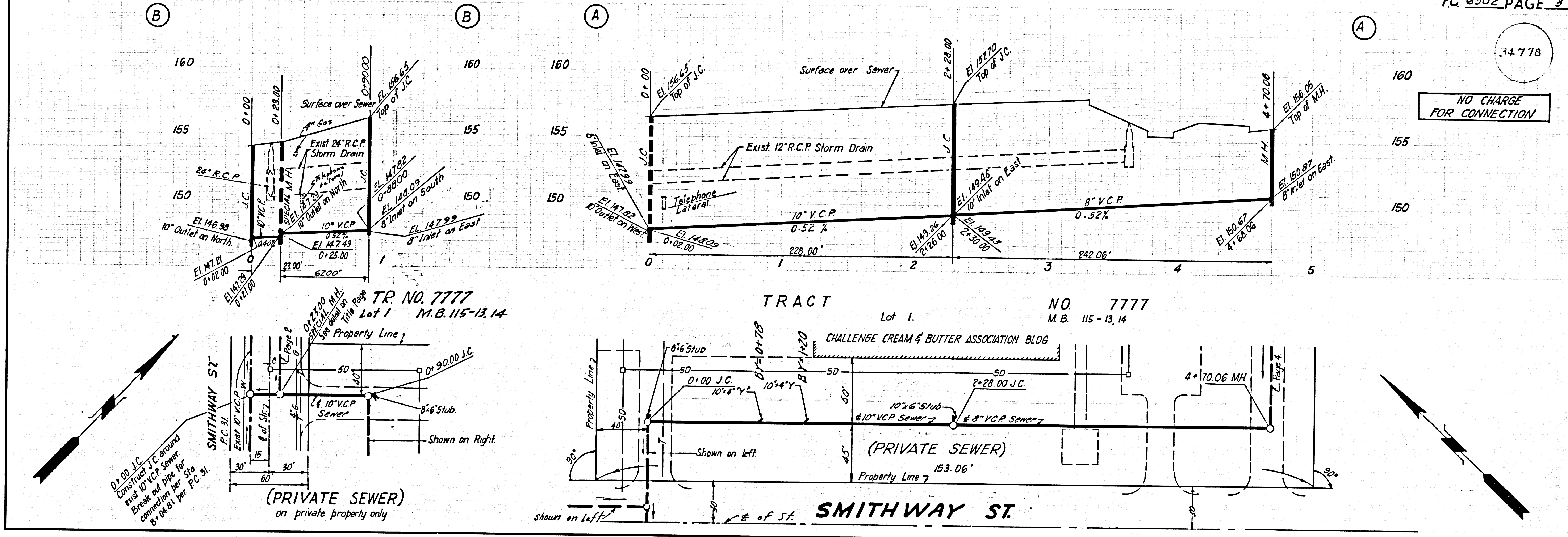


P. C. 6902 PAGE 2

34777

NO CHARGE
FOR CONNECTION

34778



34779

