

2009 29
 12
 WJLJ - 240000 30 YTTJ
 2300 5 10 5 1 2300

B.M. 1=5 ELEV. 472.359
Ellen Drive & Arrow Hwy. S.W. Cor.
L&T in bot step to house #16166
F.B. 1452-301

IRWINDALE BUILDING DISTRICT No. 5.06

PC. 6905
PAGE 1

PRIVATE CONTRACT NO. 6905

PROFILE, ALIGNMENT AND GRADE OF
SANITARY SEWERS
TO BE CONSTRUCTED IN
ELLEN DRIVE
AND OTHER RIGHTS OF WAY
J.N. 3354.10
ONE SHEET, TWO PAGE

FEBRUARY 1964

CITY OF IRWINDALE, CALIFORNIA

**INDEX MAP
ELLEN DRIVE**
SCALE 1"=600'

① Figure in Circle Indicates Page Number

USE EXTRA STRENGTH PIPE. ALL PIPE IS STANDARD DEPTH EXCEPT AS NOTED.
USE MECHANICAL COMPRESSION JOINTS FOR ALL VITRIFIED CLAY PIPE SEWERS PER SPEC. SECT. 26, 46, & 47.
ALL STRUCTURES SHALL BE BRICK SEWER STRUCTURES AS PER PLAN NO. S-194, EXCEPT AS NOTED.
USE STANDARD MANHOLE FRAMES AND COVERS AS PER PLAN NO. S-211, EXCEPT AS NOTED.
USE FORMER NO. 2, SEC. 84 OF SPECIFICATIONS TO COMPUTE ALLOWABLE LOADS.
CONSTRUCT HOUSE LATERALS WITH INVERTS AT PROPERTY LINE 6 FEET BELOW CURB GRADE, OR GRADE OF TRANSIT LINE OF STREET EXCEPT AS NOTED.
POINTS IN CIRCLES AT ENDS OF HOUSE LATERALS INDICATE DEPTH BELOW CURB GRADE, OR GRADE OF TRANSIT LINE OF STREET.
POINTS IN CIRCLES AT ENDS OF HOUSE LATERALS INDICATE HOUSE LATERALS SHALL BE CONSTRUCTED WITH 1/4" RISE PER FOOT TO PROPERTY LINE.
WORDS IN CIRCLES AT ENDS OF HOUSE LATERALS INDICATE Y'S SHALL BE Laid HORIZONTAL AND HOUSE LATERALS SHALL BE CONSTRUCTED WITH 1/4" RISE PER FOOT TO PROPERTY LINE.
ALL HOUSE LATERALS SHALL BE CONSTRUCTED IN A STRAIGHT ALIGNMENT AT RIGHT ANGLES FROM THE MAIN LINE SEWER EXCEPT AS SHOWN ON THE PLANS. HOUSE LATERALS FROM CHIMNEYS SHALL NOT HAVE AN ANGLE OF LESS THAN 45 DEGREES WITH THE MAIN LINE SEWER.
THE CONTRACTOR SHALL NOTIFY THE CONSTRUCTION DIVISION BY TELEPHONE MADISON 9-47, EXT. 2151 AT LEAST 24 HOURS BEFORE STARTING ANY WORK UNDER THIS CONTRACT.
CONSTRUCTION IN STATE HIGHWAYS SHALL CONFORM WITH STATE HIGHWAY PERMIT AND THE CONTRACTOR SHALL PAY ALL COSTS IN CONNECTION THEREWITH.
ALL STATE AND LOCAL TRENCH SAFETY ORDERS WILL BE RIGIDLY ENFORCED.
RESURFACING SCHEDULE: RESURFACE TRENCH WITHIN PAVED AREA WITH ASPHALTIC CONCRETE 7" INCHES IN THICKNESS ON 8" INCHES OF ADEQUATE BASE MATERIALS ON ARROW HIGHWAY.

PAGE NO.	STREET	FROM	TO	TYPE OF RESURFACING

ALL CONCRETE CROSS CUTTERS, CURBS, GUTTERS, PAVEMENT, AND DRIVEWAYS SHALL BE TUNNELED OR JACKED PER LOS ANGELES COUNTY ROAD DEPARTMENT REQUIREMENTS.
THE FOLLOWING LATEST REVISED STANDARD PLANS ON FILE IN THE OFFICE OF COUNTY ENGINEER SHALL APPLY IN THE CONSTRUCTION OF THIS PROJECT.

STANDARD LEGEND	S-44
STANDARD BRICK SEWER STRUCTURE	S-104
STANDARD MANHOLE FRAME AND COVER	S-211
STANDARD MANHOLE STEPS	S-143
STANDARD STOPPER	S-170
STANDARD WYE SUPPORT	S-171
STANDARD SUPPORT AND PROTECTION OF SEWER PIPES	S-172
STANDARD BEDDING FOR SEWER PIPES	S-173
MINIMUM EXCAVATION SAFETY REQUIREMENTS	S-180

THE UNDERGROUND UTILITY COMPANIES WITHIN THE LIMITS OF THIS PROJECT ARE AS FOLLOWS:

- (1) Baldwin Park County Water District
- (2) Southern Counties Gas Company
- (3) _____
- (4) _____

NO CONNECTIONS FOR THE DISPOSAL OF INDUSTRIAL WASTES SHALL BE MADE TO SEWERS SHOWN ON THESE DRAWINGS WITHOUT WRITTEN PERMISSION FROM THE CHIEF ENGINEER AND GENERAL MANAGER OF THE COUNTY SANITATION DISTRICTS.

34631

SCALE VERT. 1"=4'
HORIZ. 1"=40'

CITY OF IRWINDALE, CALIFORNIA

JOHN A. LAMBIE
APPROVED BY *[Signature]*
SANITATION ENGINEER

J. D. PARKHURST
APPROVED BY *[Signature]*
CHIEF ENGINEER OF COUNTY SANITATION DISTRICT NO. 22

RECOMMENDED BY *[Signature]*
REGIONAL ENGINEER

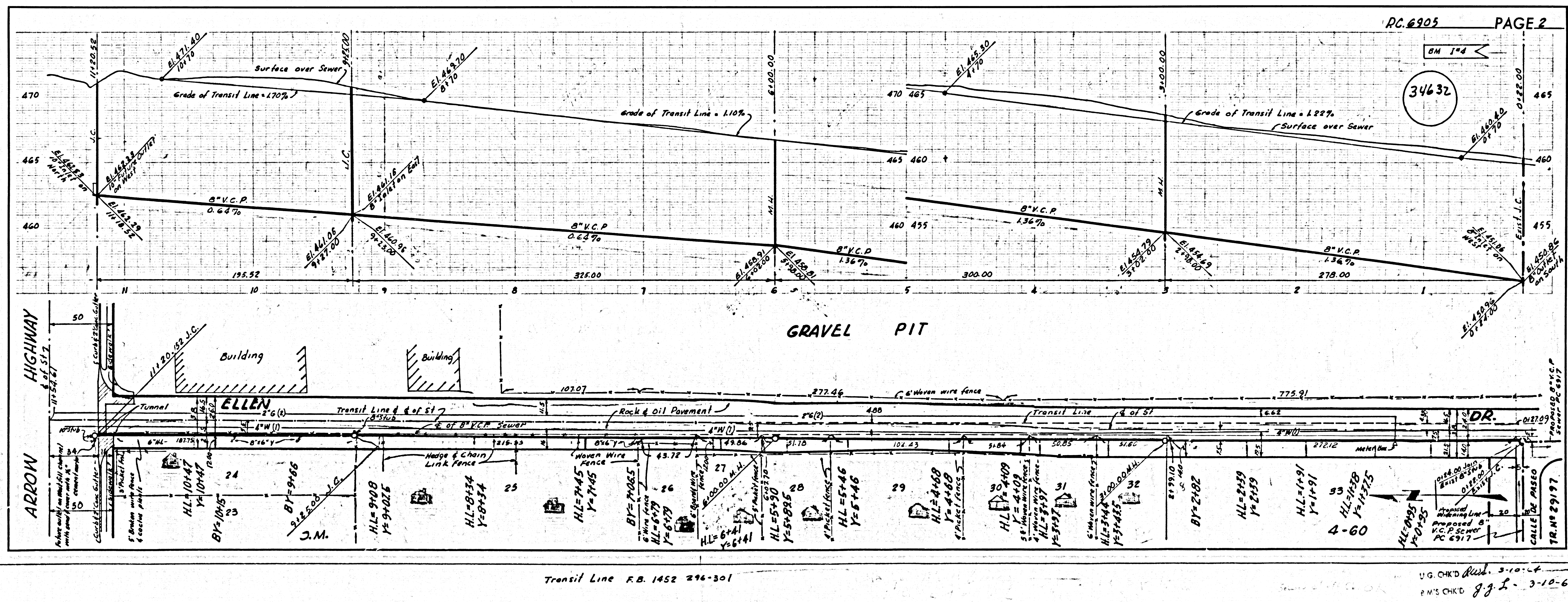
DESIGNED BY *[Signature]*
REG. C. E. NO. 7822

APPROVED BY *[Signature]*
OFFICE ENGINEER

APPROVED BY *[Signature]*
CITY MANAGER

NOTES:
WORK SHALL BE CONSTRUCTED ACCORDING TO STANDARD SPECIFICATIONS DATED MAY 25, 1963, ON FILE IN THE OFFICE OF THE COUNTY ENGINEER AND SHALL BE PROSECUTED ONLY IN THE PRESENCE OF THE COUNTY ENGINEER.
GRADES TO WHICH THIS IMPROVEMENT IS TO BE CONSTRUCTED ARE SHOWN ON PLANS AND PROFILES. GRADE POINTS FOR TOP OF CURB, CENTER LINE OF STREET OR CENTER LINE OF ALLEY ARE SHOWN BY CIRCLES ON PROFILES AT ALL POINTS BETWEEN DESIGNATED POINTS THE GRADE SHALL BE ESTABLISHED SO AS TO CONFORM TO A STRAIGHT LINE DRAWN BETWEEN SAID DESIGNATED POINTS.
ELEVATIONS ARE IN FEET ABOVE U.S.C. & G.S. SEA LEVEL DATUM OF 1929.
UNIT PRICES FOR ADDITIONAL WORK WHICH MAY BE REQUIRED BUT WHICH CANNOT BE ASCERTAINED IN ADVANCE, SHALL BE SUBMITTED IN THE PROPOSAL.
THIS DRAWING AND THE DATA HEREON ARE HEREBY MADE A PART OF THE SPECIFICATIONS.

LAYOUT	D. R. OLSON	FEB 64	UNDERGROUND	HL	8-10-64
TRACED	D. R. OLSON	FEB 64	BENCH MARKS	J. J. LAMMAM	MAR 64
CHECKED	de Jong	MAR 64	MAINTENANCE		
F.B. 1452-261-264, 295-301			INSPECTOR		
A. B. 8618-21-22			RECORD PLANS	W. Y. TEN	5-14-64



U.G. CHK'D *[Signature]* 3-10-64
P.M.S. CHK'D *[Signature]* 3-10-64