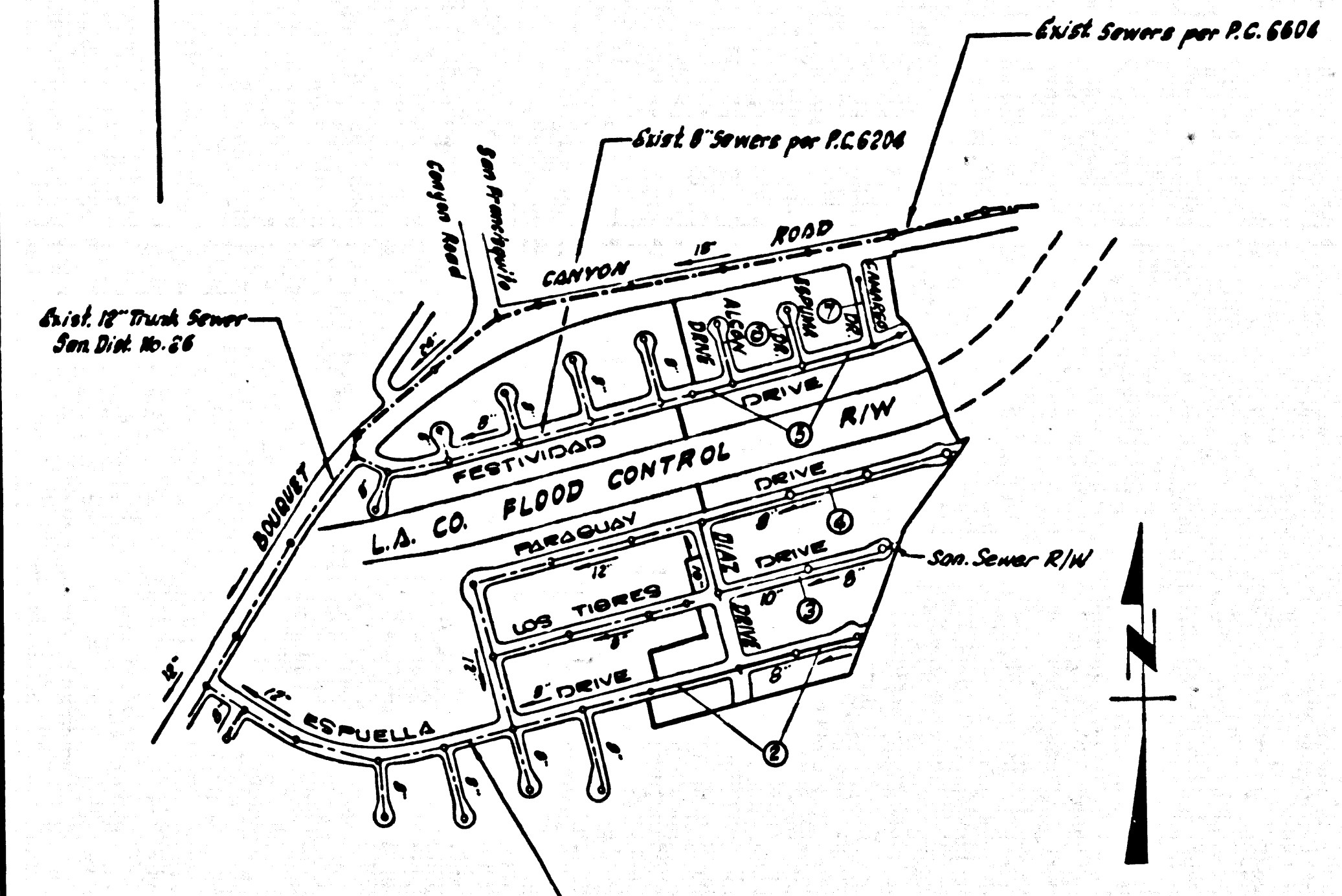


B.M. SL 620 ELEV. 1203.901  
 SET RD. DEPT. B.M. TAG IN CTR. 18" SQ.  
 CONC. SLAB 5' 10 1/2" N. & 3 1/2"  
 FRANCISCO C.M. RD. 8 1/2' E. &  
 BOUQUET C.M. RD. PROD. 8 1/2' ELY RP 1053474  
 NEWHALL QUAD. 19 58



NOTE: Numbers in circles indicate page numbers.  
 INDEX MAP  
 TRACT No. 27994  
 P.C. 6911  
 Scale: 1" = 60'

NEWHALL BLDG. DIST. NO. 82  
 PROFILE ALIGNMENT AND GRADE OF  
 SANITARY SEWERS PAGE 1  
 CONSTRUCTED IN

TRACT NO. 27994

PRIVATE CONTRACT NO. 6911

W.S. 62  
 4 SHEETS, 7 PAGES  
 SCALE: VERT. 1" = 4'  
 HORIZ. 1" = 40'  
 FEBRUARY, 1964

PREPARED IN THE OFFICES OF  
 MENTIRE & QUIROS, INC.  
 BY: *J. Quiros*  
 REG. C. E. NO. 8583

36413

FOR LEGEND SEE PLAN NO. S-64

NOTES:  
 GRADES TO WHICH THE IMPROVEMENT IS TO BE CONSTRUCTED ARE SHOWN ON PLANS AND PROFILES. GRADE POINTS FOR TOP OF CURBS, CENTER LINE OF STREETS, OR CENTER LINE OF ALLEYS ARE SHOWN BY CIRCLES ON PROFILES. AT ALL POINTS BETWEEN DESIGNATED POINTS THE GRADE SHALL BE ESTABLISHED SO AS TO CONFORM TO A STRAIGHT LINE DRAWN BETWEEN SAID DESIGNATED POINTS. ELEVATIONS ARE IN FEET ABOVE U.S.C. & G.S. SEA LEVEL DATUM OF 1929.  
 THIS DRAWING AND THE DATA HEREON ARE HEREBY MADE A PART OF THE SPECIFICATIONS.  
 WORK SHALL BE CONSTRUCTED ACCORDING TO STANDARD SPECIFICATIONS DATED MAY 22, 1962, ON FILE IN THE OFFICE OF THE COUNTY ENGINEER AND SHALL BE PROSECUTED ONLY IN THE PRESENCE OF THE COUNTY ENGINEER.  
 BEFORE WORK CAN BE STARTED, THE CONTRACTOR SHALL OBTAIN A PERMIT TO EXCAVATE IN COUNTY STREETS FROM THE L.A. COUNTY ROAD DEPT., DISTRICT OFFICE NO. 1, AND PAY A FEE TO THE COUNTY ENGINEER, ROOM 200, COUNTY ENGINEERING BUILDING, 100 WEST SECOND STREET, LOS ANGELES, CALIFORNIA, REGIONAL OFFICE, SUFFICIENT TO COVER THE COST OF CONSTRUCTION INSPECTION AND RECORD PLANS.  
 APPROVAL OF THIS PLAN BY THE COUNTY OF LOS ANGELES DOES NOT CONSTITUTE A REPRESENTATION AS TO THE ACCURACY OF THE LOCATION OF OR THE EXISTENCE OR NON-EXISTENCE OF ANY UNDERGROUND UTILITY PIPE, OR STRUCTURE WITHIN THE LIMITS OF THIS PROJECT. THIS NOTE APPLIES TO ALL PAGES.  
 IF WORK IS TO BE DONE IN A STATE HIGHWAY, A PERMIT MUST BE OBTAINED FROM THE STATE OF CALIFORNIA, DIVISION OF HIGHWAYS, 120 SOUTH SPRING STREET, LOS ANGELES, CALIFORNIA.

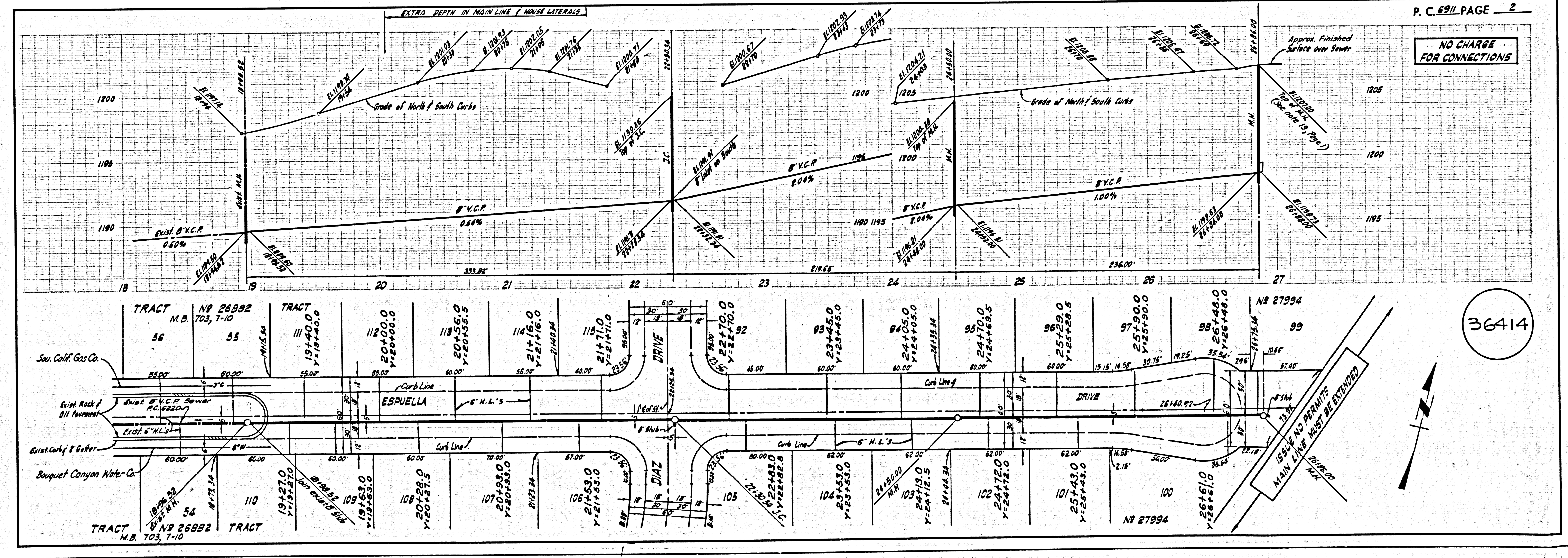
COUNTY OF LOS ANGELES, CALIFORNIA  
 JOHN A. LAMBIE, COUNTY ENGINEER  
 APPROVED BY: *J. Hughes* SANITATION ENGINEER  
 SUBMITTED BY: *John W. Anderson* REGIONAL ENGINEER  
 CHECKED BY: *W. Wade* REG. C. E. NO. 3446

J. D. PARKHURST, CHIEF ENGINEER  
 CO. SAN. DIST. NO. 28  
 APPROVED BY: *J. D. Parkhurst* OFFICE ENGINEER

J. N. 0362.72

COLLECT CHARGES AS INDICATED  
*Ruben A. Glass 7-9-64*

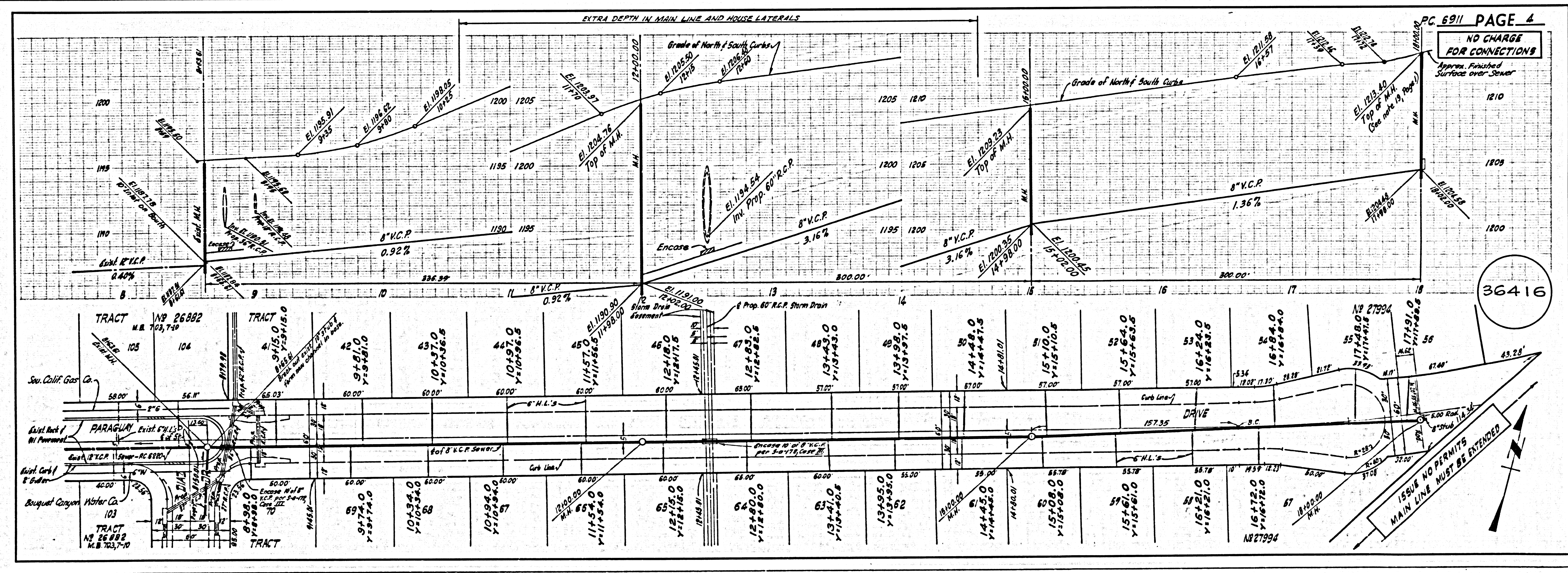
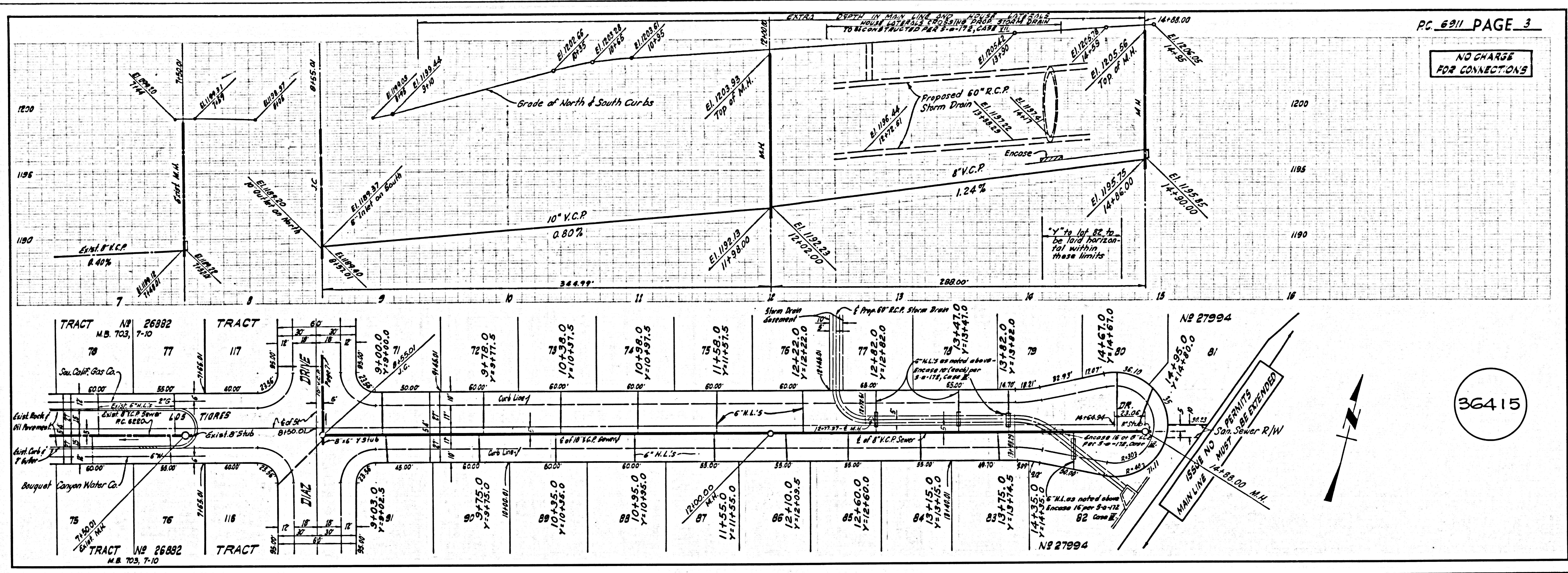
REVISIONS  
 10-7-64 - Raised curb  
 Pages 3 & 4 - Raised curb  
 grades and inverts  
 APPROVED: *John W. Anderson* OFFICE OF COUNTY ENGINEER



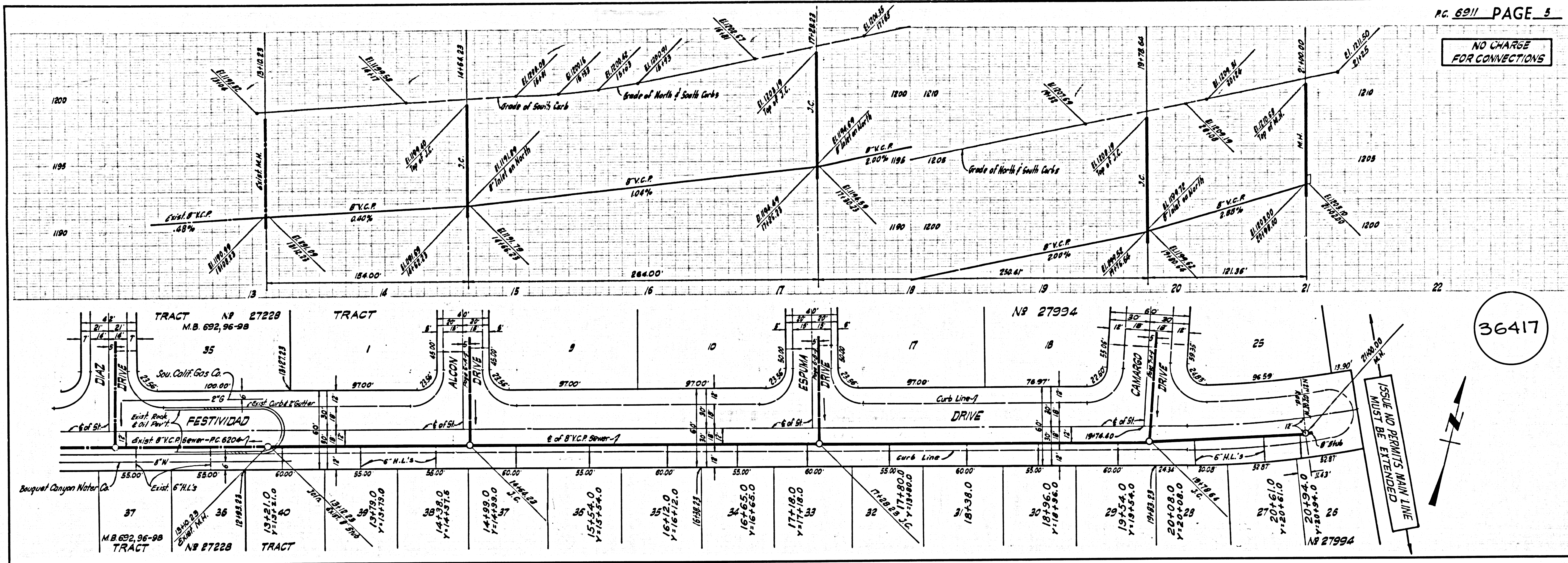
P. C. 6911 PAGE 2

NO CHARGE FOR CONNECTIONS

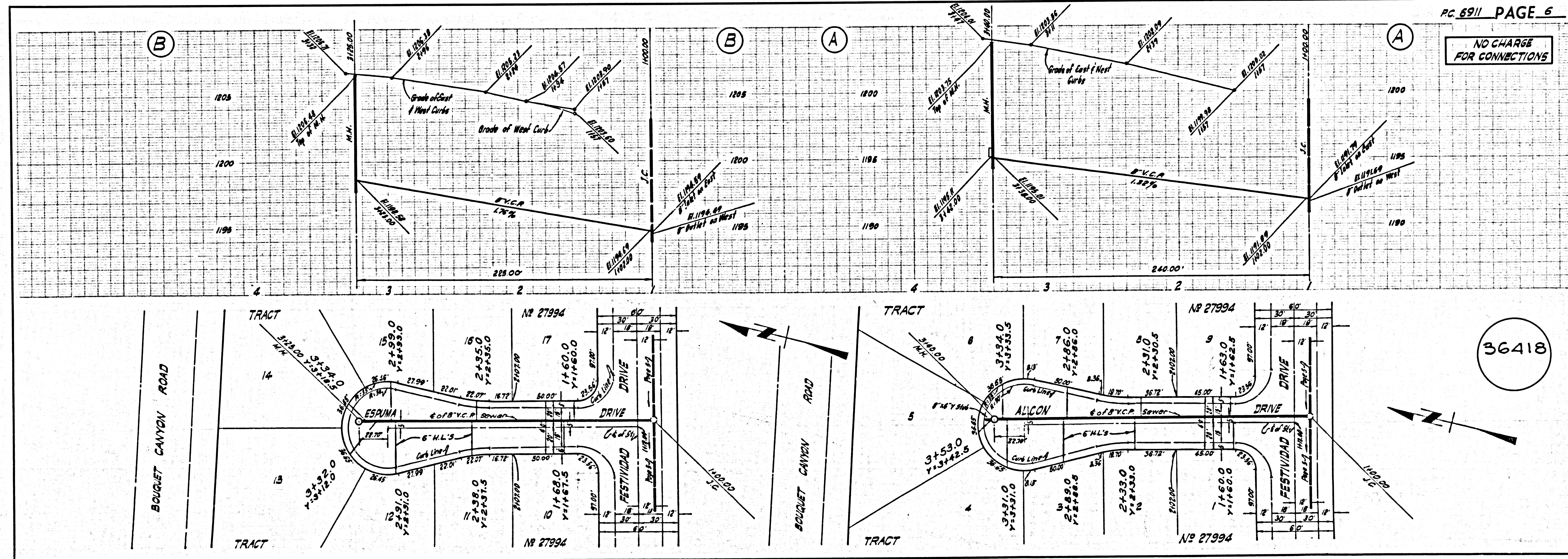
36414

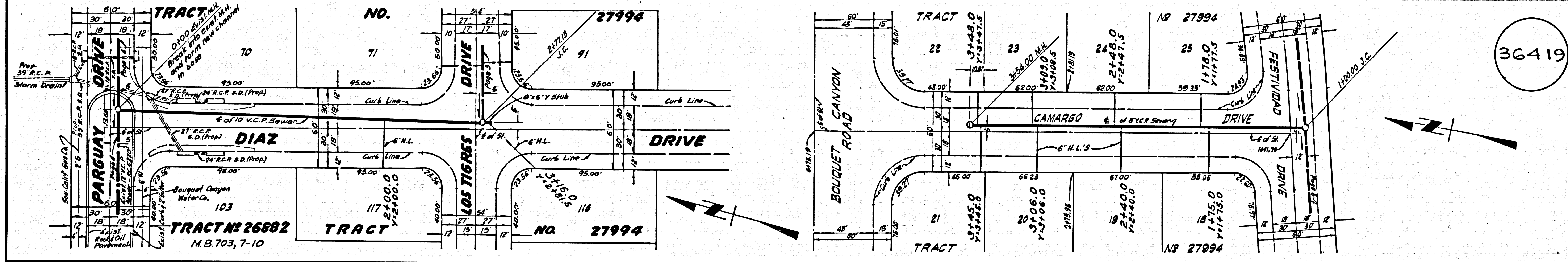
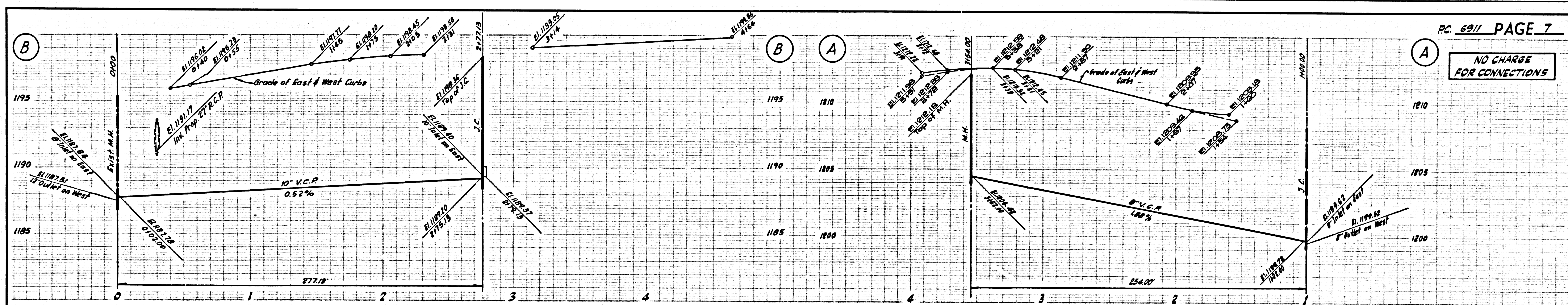


NO CHARGE FOR CONNECTIONS



NO CHARGE FOR CONNECTIONS





PC 6911 PAGE 7

NO CHARGE FOR CONNECTIONS

36419

1160 27  
 AGENTS ON TRACT