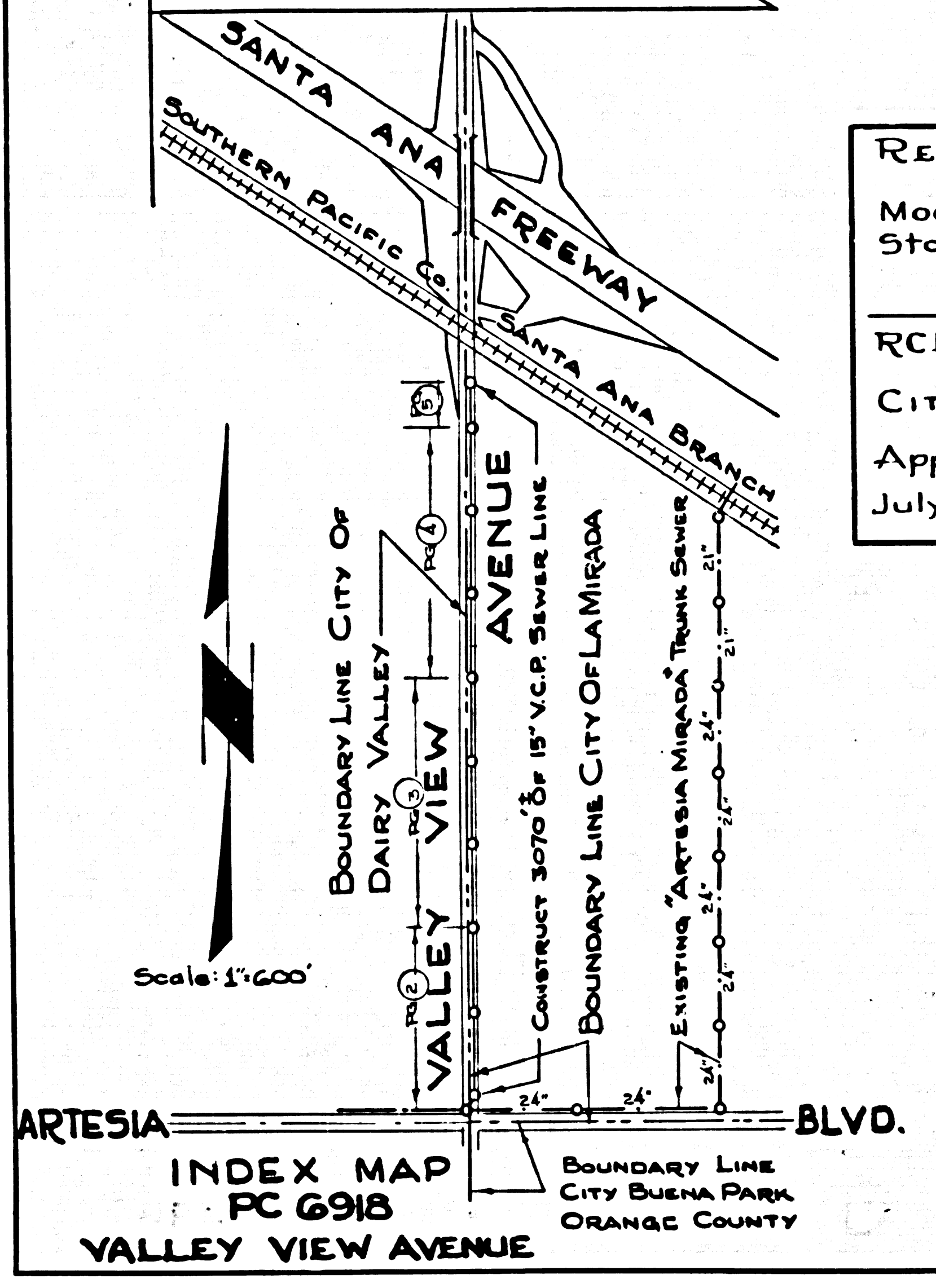
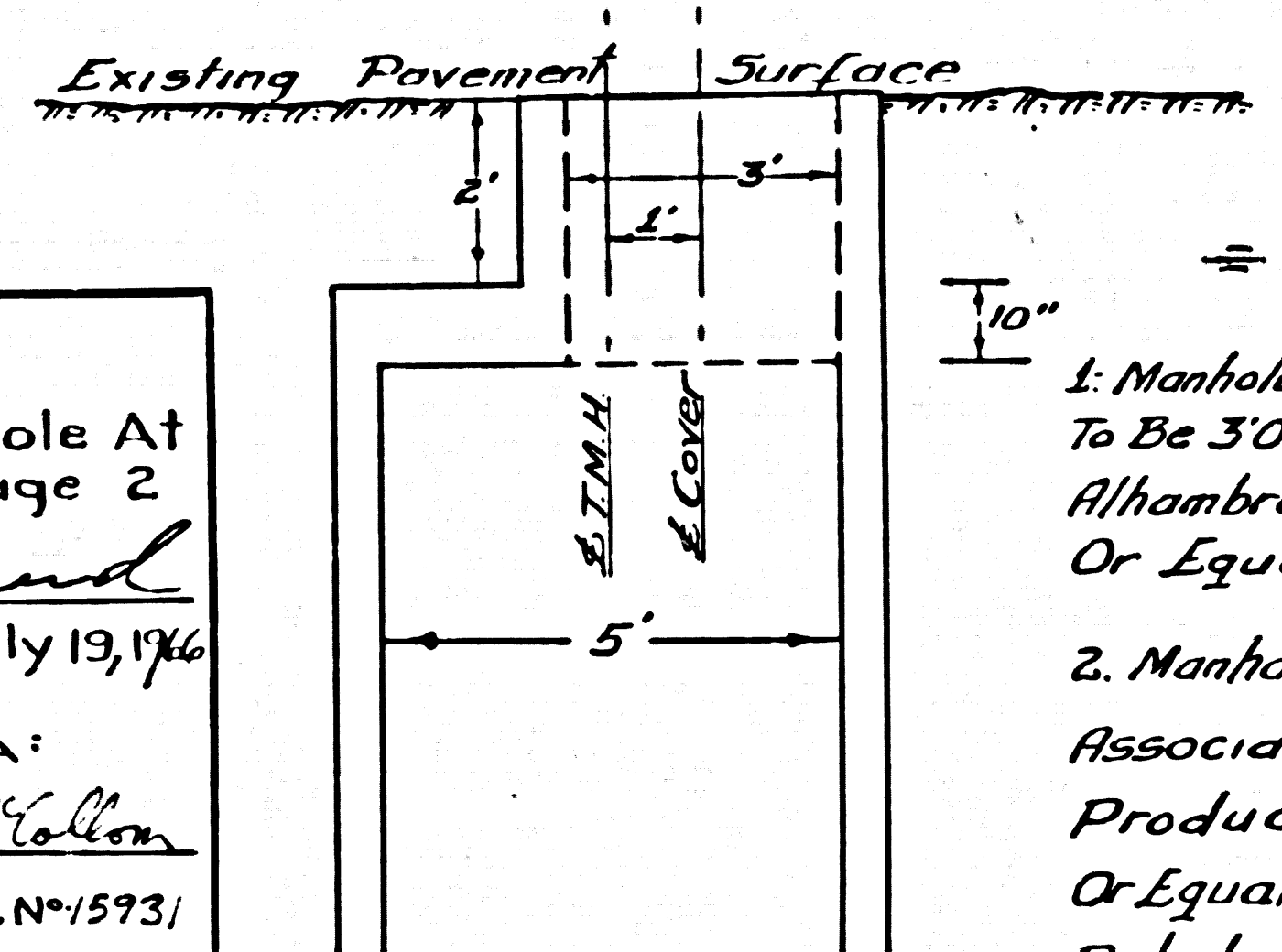


B.M. 2768 ELEV. 53.995
 L.A. Co. SURVEYOR'S MONUMENT, &
 INTERSECTION VALLEY VIEW AVENUE &
 ARTESIA BLVD. (OLD STYLE MON.) IN HAND WELL
 ARTESIA QUAD. 1955



REVISION:
 Modify Trap Manhole At
 Station 2+00.00 Page 2
W.J. Edlund
 RCE No. 6178, July 19, 1966
 Approved By: *C.E. McCallum*
 July 1966 RCE No. 15931

DETAIL: NO SCALE



NOTES

1. Manhole Frame And Cover To Be 30" Diameter. Alhambra Foundry No. 1251 Or Equal
 2. Manhole To Be As Associated Concrete Products, Inc. FT 104 Or Equal, Modified Per Detail.
1. PROVIDE STAKES ON THE PROPERTY LINE OR PROPERTY LINES PRODUCED AT RIGHT ANGLES TO THE SEWER LINE AT THE CENTER LINE OF EACH MANHOLE.
 2. NO REPRESENTATIVE OF THE CITY ENGINEER WILL SURVEY OR LAY OUT ANY PORTION OF THE WORK.
 3. THE PRIVATE ENGINEER SHALL FURNISH THE CITY ENGINEER WITH GRADE SHEETS AND STATIONING FOR ALL HOUSE LATERALS AND Y BRANCHES AND SHALL PROVIDE STAKES FOR THEM AT THEIR PROPER LOCATIONS WITH STATIONING PLAINLY MARKED. ALL HOUSE LATERALS SHALL BE CONSTRUCTED IN A STRAIGHT ALIGNMENT AT RIGHT ANGLES FROM THE MAIN LINE SEWER EXCEPT AS SHOWN ON THE PLANS. HOUSE LATERALS FROM CHIMNEYS SHALL NOT HAVE AN ANGLE OF LESS THAN 45° WITH THE MAIN LINE SEWER. ANY CHANGE IN ALIGNMENT SHALL BE REQUESTED IN WRITING BY THE PRIVATE ENGINEER.
 4. THE PRIVATE ENGINEER SHALL FURNISH THE HOUSE LATERAL DEPTH AT THE PROPERTY LINE BELOW THE TOP OF CURB ELEVATION FOR EACH HOUSE LATERAL ON THE GRADE SHEET.
 5. NO REVISIONS SHALL BE MADE IN THESE PLANS WITHOUT THE APPROVAL OF THE CITY ENGINEER.
 6. THE CONTRACTOR SHALL NOTIFY THE CONSTRUCTION DIVISION BY TELEPHONE, MADISON 9-4747, EXT. 8138, AT LEAST TWENTY-FOUR HOURS BEFORE STARTING ANY WORK UNDER THIS CONTRACT.
 7. MANHOLES SHALL BE BRICK SEWER STRUCTURES PER S-3 PERCAST CONCRETE MANHOLES PER S-5 OR S-6 MAY BE USED AS AN ALTERNATE IN LOCATIONS APPROVED BY THE CITY ENGINEER.
 8. USE STANDARD MANHOLE FRAMES AND COVERS, S-5 EXCEPT AS NOTED.
 9. MANHOLE TOPS IN UNIMPROVED PORTIONS OF WAY TO BE SIX INCHES ABOVE FINISHED GRADE.
 10. USE EXTRA STRENGTH PIPE, ALL PIPE IS 24" DEPTH EXCEPT AS NOTED.
 11. USE CEMENT MORTAR OR MECHANICAL COMPRESSION JOINTS FOR ALL V.C.P. JOINTS PER SPECS., SECS. 24, 48 & 49.
 12. ALL STATE AND LOCAL TRENCH SAFETY ORDERS WILL BE RIGIDLY ENFORCED.
 13. IF A POWER POLE IS WITHIN THREE FEET OF THE SEWER, THE SEWER SHALL BE ENCASED, PER S-23 TWO FEET ON EACH SIDE FROM THE POINT OF INTERFERENCE.
 14. IF DURING THE COURSE OF CONSTRUCTION IT IS DETERMINED THAT THERE IS LESS THAN FOUR FEET OF COVER OVER THE TOP OF A MAIN LINE OR HOUSE LATERAL V.C.P. SEWER WHICH IS NOT INDICATED ON THE PLANS, THE PIPE SHALL BE ENCASED PER S-23 UNLESS OTHERWISE APPROVED BY THE CITY ENGINEER.
 15. HOUSE LATERALS TO BE CONSTRUCTED WITH INVERTS AT 1/4" RISE PER FOOT TO THE PROPERTY LINE.
 16. RESURFACE ALL TRENCHES WITHIN PAVED AREAS TO MEET L.A. COUNTY ROAD DEPT. OR CALIFORNIA STATE HIGHWAY REQUIREMENTS IN ACCORDANCE WITH PERMITS.
 17. FOR ALLOWABLE LEAKAGE TEST USE FORMULA NO. 2, SPECS., SEC. 54.
- BEFORE BREAKING INTO ANY EXISTING STRUCTURE AND BEFORE FINAL ACCEPTANCE OF THIS WORK, COUNTY SANITATION DISTRICT (DU 4-1281) SHALL BE NOTIFIED IN ORDER THAT REQUIRED INSPECTION CAN BE MADE.

LA MIRADA BLDG. DIST. NO. 4.08

PROFILE ALIGNMENT AND GRADE OF
 SANITARY SEWERS PAGE 1
 TO BE CONSTRUCTED IN

VALLEY VIEW AVENUE
 PRIVATE CONTRACT NO. 6918

W.S. 34
 3 SHEETS, 9 PAGES
 SCALE: VERT. 1"=4' HORIZ. 1"=40'
 JULY 10, 1964
 PREPARED BY THE OFFICES OF
 SOUTHERN PACIFIC COMPANY
 BY: *R. WIDMANN*
 REG. C.E. NO. 6246
 FOR LEGEND SEE PLAN NO. S-1

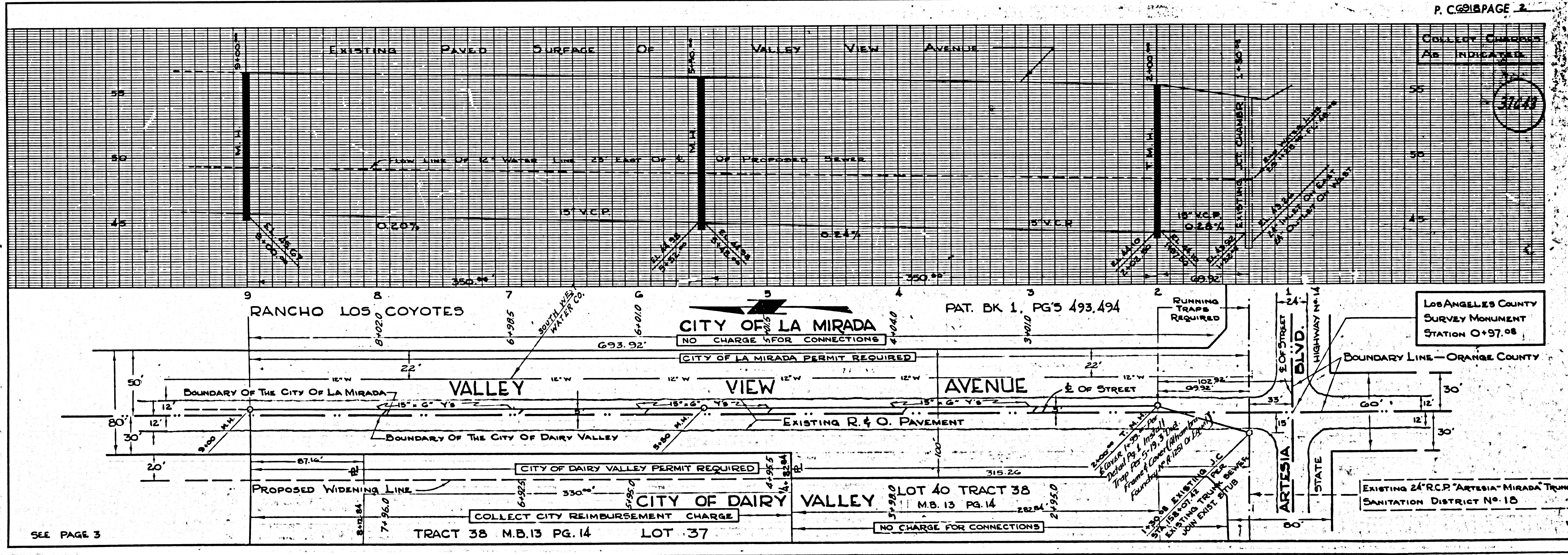
37642

NOTE:
 GRADES TO WHICH THIS IMPROVEMENT IS TO BE CONSTRUCTED ARE SHOWN ON PLANS AND PROFILES. GRADE POINTS FOR TOP OF CURB, CENTER LINE OF STREETS, OR CENTER LINE OF ALLEYS ARE SHOWN BY CIRCLES ON PROFILES. AT ALL POINTS BETWEEN DESIGNATED POINTS THE GRADE SHALL BE ESTABLISHED SO AS TO CONFORM TO A STRAIGHT LINE DRAWN BETWEEN SAID DESIGNATED POINTS. ELEVATIONS ARE IN FEET ABOVE U.S.C. & G.S. MEAN SEA LEVEL DATUM OF 1929.
 THIS DRAWING AND THE DATA HEREON ARE HEREBY MADE A PART OF THE SPECIFICATIONS.
 BEFORE WORK CAN BE STARTED, THE CONTRACTOR MUST OBTAIN A PERMIT TO EXCAVATE IN CITY STREETS FROM THE COUNTY ROAD DEPT., DISTRICT OFFICE NO. 4, AND MAKE A DEPOSIT WITH THE CITY OF LA MIRADA (FOR CITY ENGINEER, VALLEY VIEW AVENUE) IN AMOUNT SUFFICIENT TO COVER THE COST OF CONSTRUCTION INSPECTION AND RECORD PLANS.
 APPROVAL OF THIS PLAN BY THE CITY OF LA MIRADANS DOES NOT CONSTITUTE A REPRESENTATION AS TO THE ACCURACY OF THE LOCATION OF OR THE EXISTENCE OR NON-EXISTENCE OF ANY UNDERGROUND UTILITY PIPE, OR STRUCTURE WITHIN THE LIMITS OF THIS PROJECT. THIS NOTE APPLIES TO ALL PAGES.
 IF WORK IS TO BE DONE IN A STATE HIGHWAY, A PERMIT MUST BE OBTAINED FROM THE STATE OF CALIFORNIA, DIVISION OF HIGHWAYS, 120 SOUTH SPRING STREET, LOS ANGELES, CALIFORNIA.

CITY OF LA MIRADA
 CAPACITY IN THIS SEWER FOR ALL PROPERTY WITHIN THE CITY OF DAIRY VALLEY IS HEREBY ASSIGNED TO THE CITY OF DAIRY VALLEY, AND NO CITY OF LA MIRADA PERMIT WILL BE REQUIRED FOR DIRECT CONNECTIONS FROM SAID PROPERTY TO THIS SEWER.
 APPROVED: *Robert E. Keller*
 ASSISTANT CITY ADMINISTRATOR

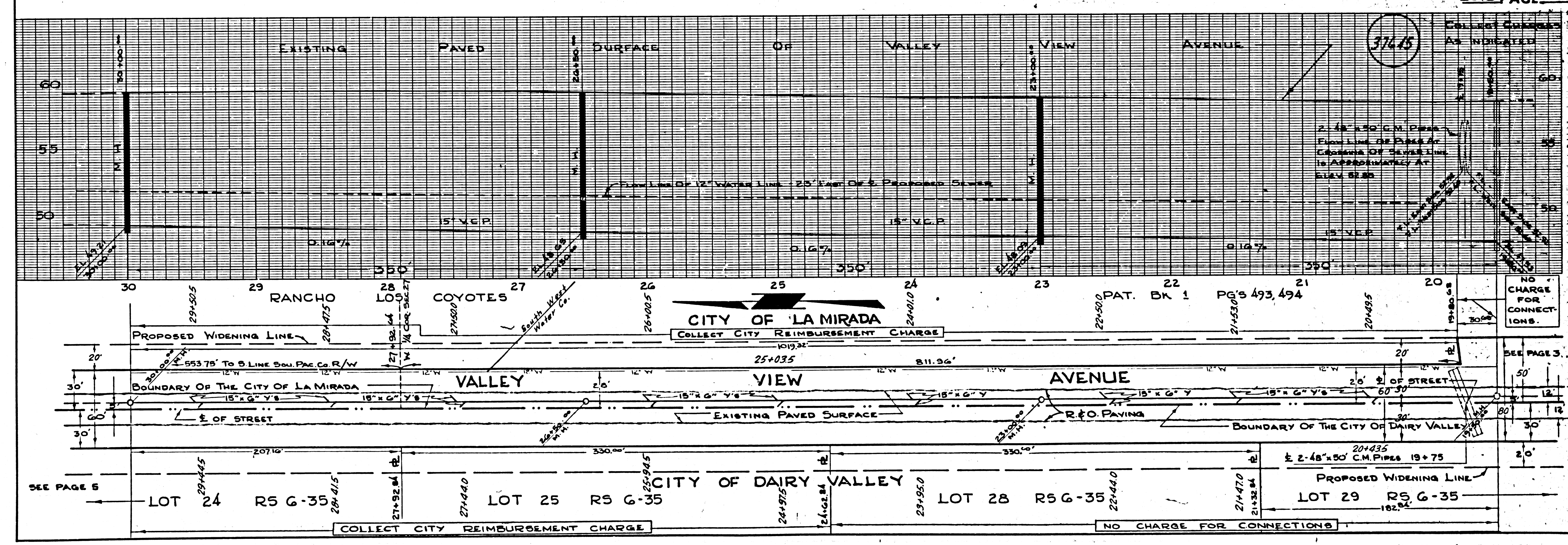
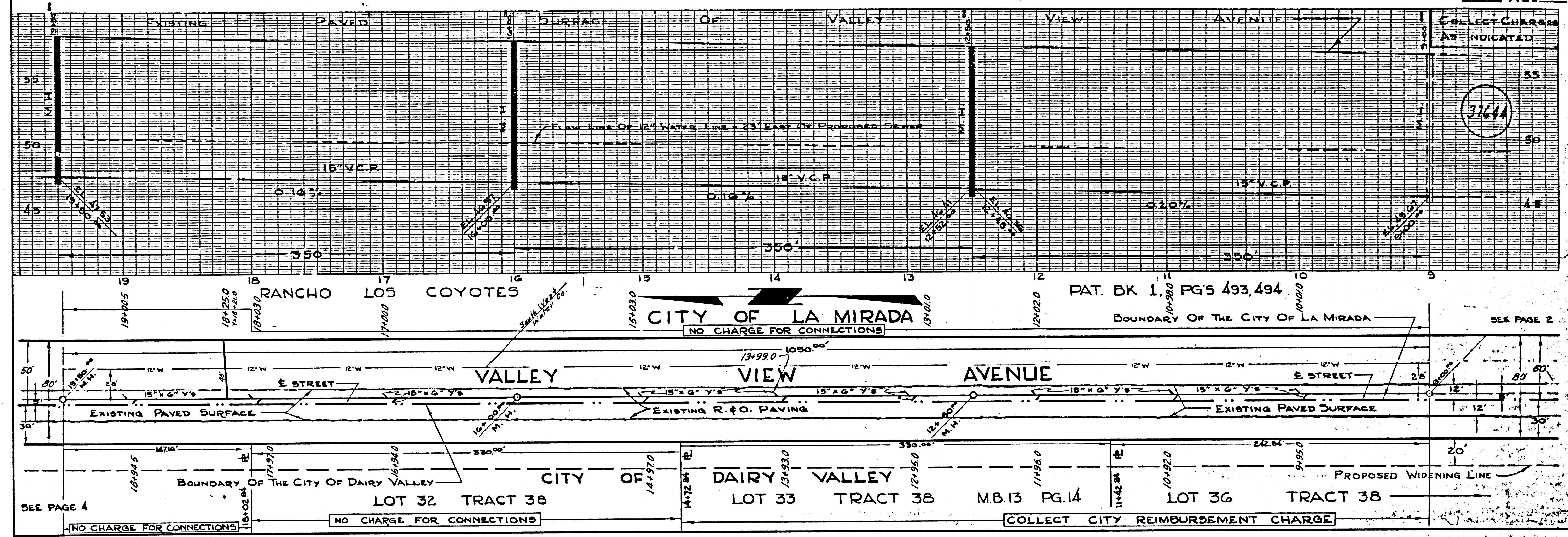
CITY OF LA MIRADA CALIFORNIA
 JOHN A. LAMBIE, CITY ENGINEER
 I. D. PARKHURST, CHIEF ENGINEER
 CO. SAN. DIST. NO. 18
 APPROVED BY: *Robert E. Keller* ASSISTANT SANITATION ENGINEER
 APPROVED BY: *J. G. Williams* OFFICE ENGINEER
 SUBMITTED BY: *J. G. Williams* CITY OF DAIRY VALLEY
 LOS CERRITOS REGIONAL ENGINEER RCE No. 3871
 CHECKED BY: *W. J. Edlund* REG. C.E. NO. 2345
 APPROVED
 APPROVED BY: *Robert A. Moore* INDUSTRIAL WASTE DIVISION
 APPROVED BY: *Willie C. Hickey* DIRECTOR OF PUBLIC WORKS

COLLECT CHARGES AS INDICATED
W. J. Edlund

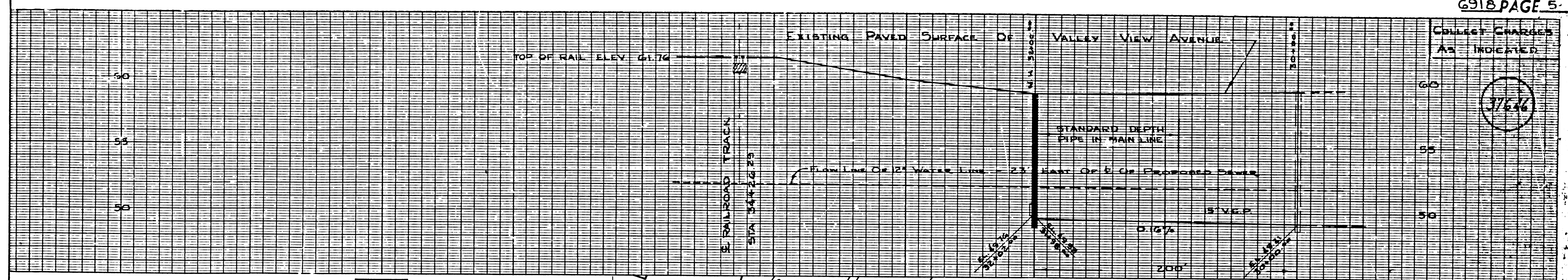


SEE PAGE 3

RAE 1738B L.A. COUNTY SEWER SHEET NO. 1 SOUTHERN CALIFORNIA BLUEPRINT CO.

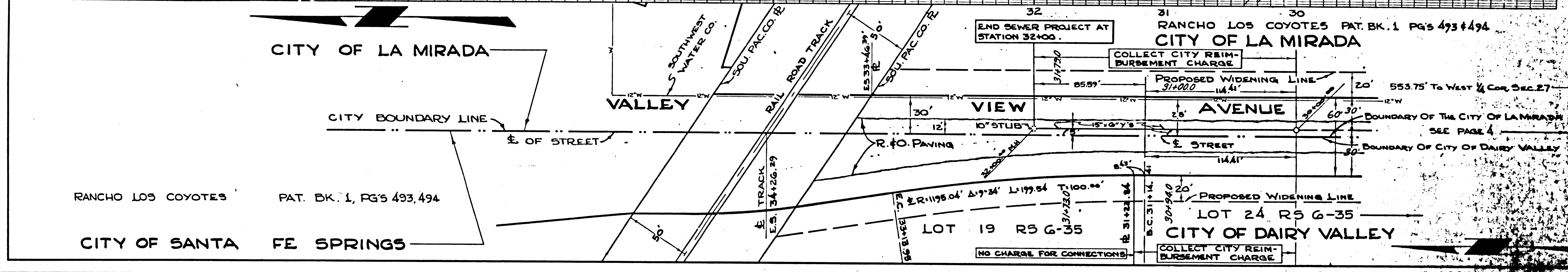


BASE 1915M L.A. COUNTY SEWER SHEET NO. 2 SO. CAL. BLUEPRINT CO.



COLLECT CHARGES AS INDICATED

37646



RANCHO LOS COYOTES PAT. BK. 1, PG'S 493, 494

CITY OF SANTA FE SPRINGS

RANCHO LOS COYOTES PAT. BK. 1 PG'S 493 & 494
CITY OF LA MIRADA

PROPOSED WIDENING LINE
553.75' TO WEST 1/4 COR. SEC. 27
SEE PAGE 4

BOUNDARY OF THE CITY OF LA MIRADA
BOUNDARY OF CITY OF DAIRY VALLEY

PROPOSED WIDENING LINE
20'

LOT 19 R5 G-35
LOT 24 R5 G-35
CITY OF DAIRY VALLEY

NO CHARGE FOR CONNECTIONS
COLLECT CITY REIMBURSEMENT CHARGE