

LOMITA BLDG. DIST. NO. 12

PROFILE ALIGNMENT AND GRADE OF  
SANITARY SEWERS PAGE 1  
TO BE CONSTRUCTED IN

TRACT NO 28732  
PRIVATE CONTRACT NO. 6925

W.S. 20  
3 SHEETS, 3 PAGES  
SCALE: VERT. 1"=4'  
HORIZ. 1"=40'  
MARCH, 1964  
PREPARED IN THE OFFICES OF  
KEMMERER ENGR. CO. INC.  
145 NO. PAINTER AVE. WHITTIER, CAL.  
By: Robert R. Flores  
REG. C.E. NO. 11349  
FOR LEGEND SEE PLAN NO. S-64

B.M. 5Y 273 ELEV. 23.549  
SPIKE IN PVMT 19' W/O E  
WILMINGTON AVE OPP E  
INT. WITH 213<sup>RD</sup> ST  
GARDENA QUAD. 19 60 ADJ.

NOTE: BY PRIVATE ENGINEER  
The existence and approximate location of underground utilities or structures shown on this plan were determined by a search of the available public records. To the best of our knowledge there are no existing underground utilities or structures except as shown on these plans.  
The contractor is required to take due precautionary measures to protect the utilities or structures shown and any other utilities or structures at the site. It shall be the contractor's responsibility to notify the owners of the utilities or structures concerned before starting work.

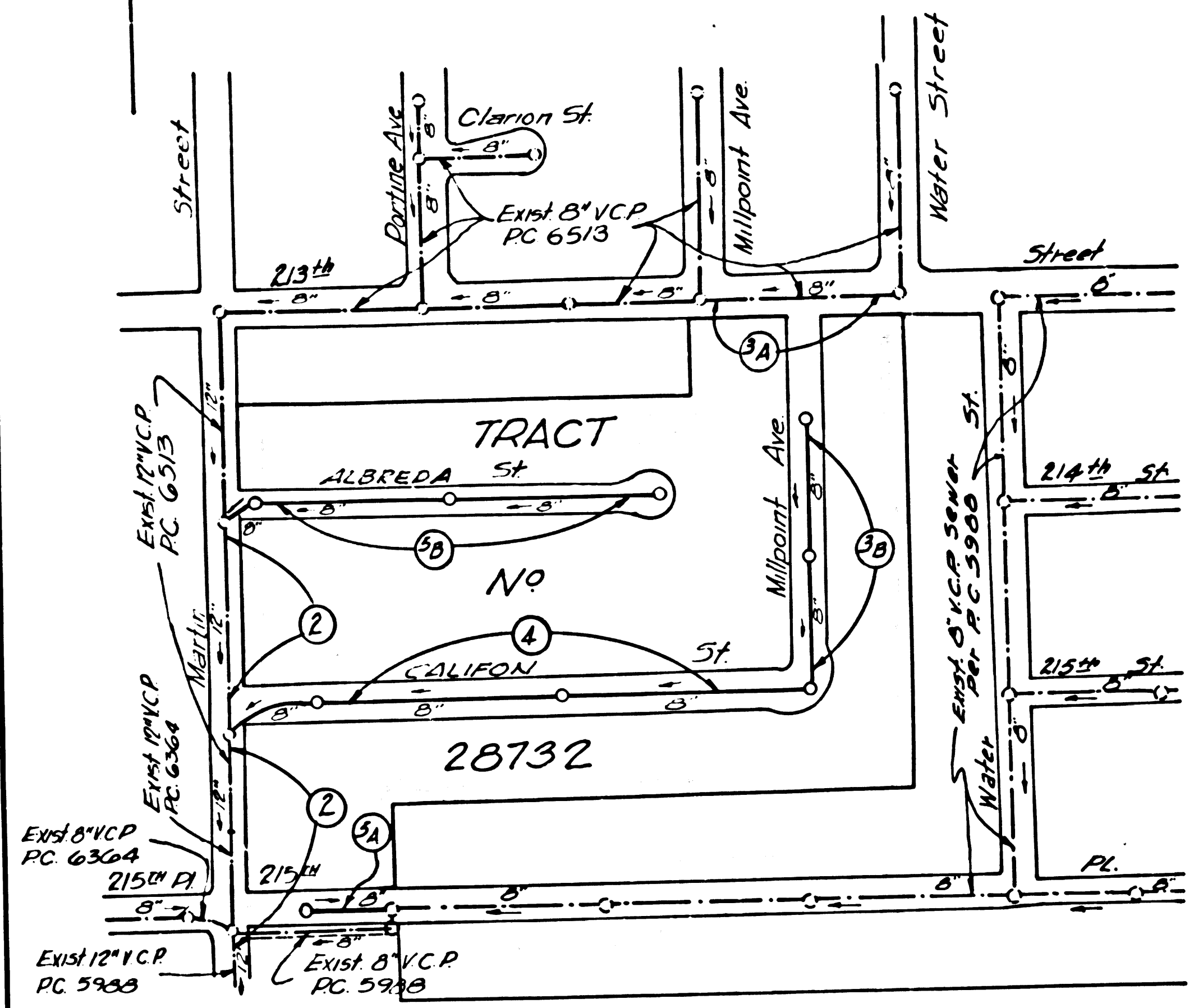
- 1. PROVIDE STAKES ON THE PROPERTY LINE OR PROPERTY LINES PRODUCED AT RIGHT ANGLES TO THE SEWER LINE AT THE CENTER LINE OF EACH MANHOLE.
- 2. NO REBRIGHTENING OF THE COUNTY ENGINEER WILL SURVEY OR LAY OUT ANY PORTION OF THE WORK.
- 3. THE PRIVATE ENGINEER SHALL FURNISH THE COUNTY ENGINEER WITH GRADE SHEETS AND STATIONING FOR ALL HOUSE LATERALS AND Y BRANCHES AND SHALL PROVIDE FOR THEM AT THEIR PROPER LOCATIONS WITH STATIONING PLAINLY MARKED. ALL HOUSE LATERALS SHALL BE CONSTRUCTED IN A STRAIGHT ALIGNMENT AT RIGHT ANGLES FROM THE MAIN LINE SEWER EXCEPT AS SHOWN ON THE PLANS. HOUSE LATERALS FROM CHIMNEYS SHALL NOT HAVE AN ANGLE OF LESS THAN 45° WITH THE MAIN LINE SEWER. ANY CHANGE IN ALIGNMENT SHALL BE REQUESTED IN WRITING BY THE PRIVATE ENGINEER.
- 4. THE PRIVATE ENGINEER SHALL FURNISH THE HOUSE LATERAL DEPTH AT THE PROPERTY LINE BELOW THE TOP OF CURB ELEVATION FOR EACH HOUSE LATERAL ON THE GRADE SHEET.
- 5. NO REVISIONS SHALL BE MADE IN THESE PLANS WITHOUT THE APPROVAL OF THE COUNTY ENGINEER.
- 6. THE CONTRACTOR SHALL NOTIFY THE CONSTRUCTION DIVISION BY TELEPHONE, MADISON 9-4747, EXT. 8153, AT LEAST TWENTY-FOUR HOURS BEFORE STARTING ANY WORK UNDER THIS CONTRACT.
- 7. MANHOLES SHALL BE BRICK SEWER STRUCTURES PER S-104. PRECAST CONCRETE MANHOLES PER S-135 OR S-173 MAY BE USED AS AN ALTERNATE IN LOCATIONS APPROVED BY THE COUNTY ENGINEER.
- 8. USE STANDARD MANHOLE FRAMES AND COVERS, S-117, EXCEPT AS NOTED.
- 9. MANHOLE TOPS IN UNIMPROVED RIGHTS-OF-WAY TO BE SIX INCHES ABOVE FINISHED GRADE.
- 10. USE EXTRA STRENGTH PIPE, ALL PIPE IS STANDARD DEPTH EXCEPT AS NOTED.
- 11. USE MECHANICAL COMPRESSION JOINTS FOR ALL V.C.P. JOINTS PER SPEC'S, SECS. 34, 43, 49.
- 12. WHERE EVER GROUND WATER IS ENCOUNTERED DURING THE CONSTRUCTION OF THE SEWERS, THE V.C.P. JOINTS SHALL BE OF POINT COMPOUND PER SPEC'S, SECS. 34 & 49, OR MECHANICAL COMPRESSION JOINTS PER SPEC'S, SEC. 34.
- 13. IF A POWER POLE IS WITHIN THREE FEET OF THE SEWER, THE SEWER SHALL BE ENCASED, PER S-172, CASE II, TWO FEET ON EITHER SIDE FROM THE POINT OF INTERFERENCE.
- 14. IF DURING THE COURSE OF CONSTRUCTION IT IS DETERMINED THAT THERE IS LESS THAN FOUR FEET OF COVER OVER THE TOP OF A MAIN LINE OR HOUSE LATERAL V.C.P. SEWER WHICH IS NOT INDICATED ON THE PLANS, THE V.C.P. PIPE SHALL BE ENCASED PER S-172, CASE II, UNLESS OTHERWISE APPROVED BY THE COUNTY ENGINEER.
- 15. HOUSE LATERALS TO BE CONSTRUCTED WITH INVERTS AT PROPERTY LINE... FEET BELOW CURB GRADE EXCEPT AS NOTED.
- 16. REINFORCE ALL TRENCHES WITHIN PAVED AREAS TO MEET L.A. COUNTY ROAD DEPT. OR CALIFORNIA STATE HIGHWAY REQUIREMENTS IN ACCORDANCE WITH PERMITS.
- 17. FOR ALLOWABLE LEAKAGE TEST USE FORMULA NO. 1000... SPEC'S, SEC. 54.
- 18. ALL STATE & LOCAL TRENCH SAFETY ORDERS WILL BE RIGIDLY ENFORCED.

REVISIONS  
Lot 39 Served by Sewer on Martin St. by Permit. 213<sup>RD</sup> ST. changed to Alameda St. 213<sup>RD</sup> ST. changed to California St. Lots 35 & 39 Platted in accordance with revised Tract Map.  
APPROVED Jack Cummings  
Reg. C.E. No 5631

REVISIONS  
Revised street dimensions of 213<sup>RD</sup> St. in front of Lots 31 & 32. Dimensions are 60'-30'-20'-10'. Dimensions were 65'-35'-25'-10'.  
Robert R. Flores  
Robert R. Flores R.C.E. No 11349  
APPROVED Ralph Schaffner 13906 4/22/64  
Reg. C.E. No

NO CONNECTIONS FOR THE DISPOSAL OF INDUSTRIAL WASTES SHALL BE MADE TO SEWERS SHOWN ON THESE DRAWINGS WITHOUT WRITTEN PERMISSION FROM THE CHIEF ENGINEER AND GENERAL MANAGER OF THE COUNTY SANITATION DISTRICTS.

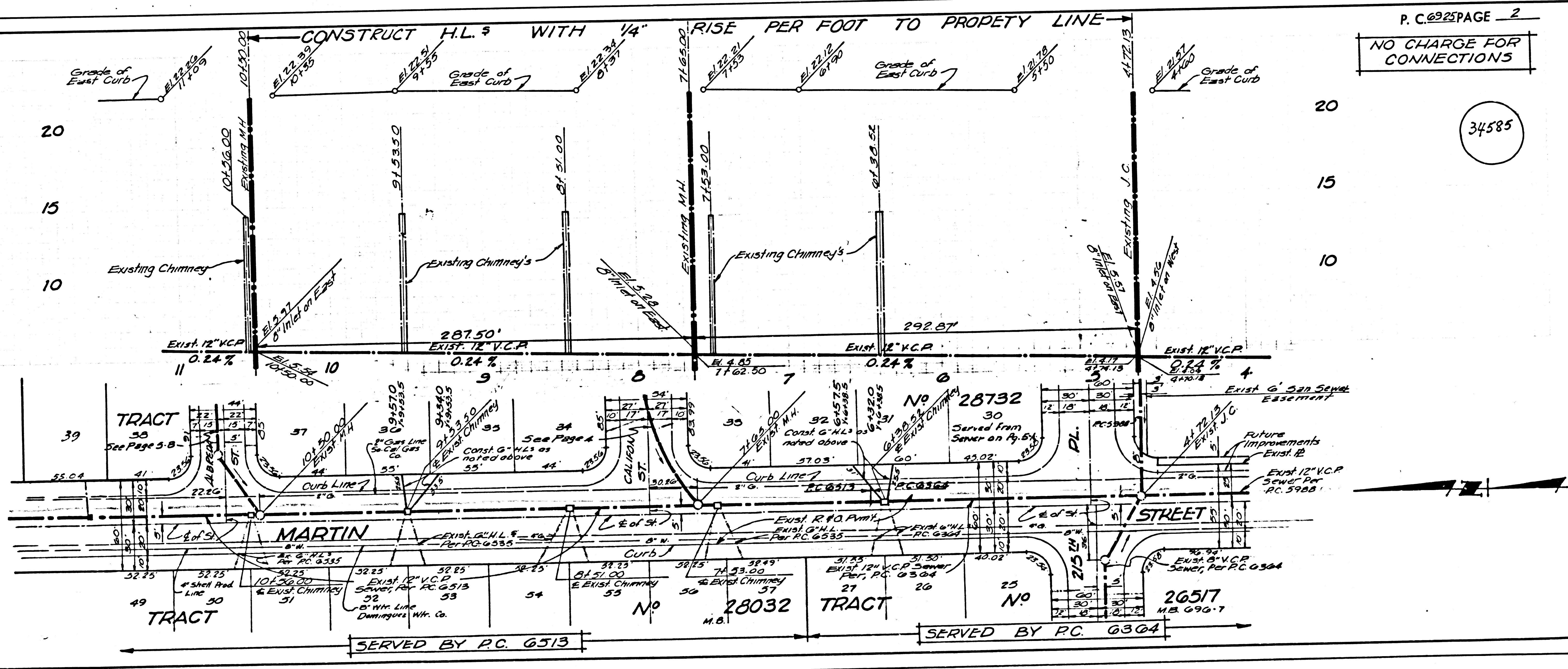
COLLECT CHARGES AS INDICATED  
L. Curtis 3-25-64



INDEX MAP  
TRACT NO 28732  
P.C. 6925  
SCALE: 1"=200'

GRADE TO WHICH THIS IMPROVEMENT IS TO BE CONSTRUCTED ARE SHOWN ON PLANS AND PROFILES. GRADE POINTS FOR TOP OF CURBS, CENTER LINE OF STREETS, OR CENTER LINE OF ALLEYS ARE SHOWN BY CIRCLES ON PROFILES. AT ALL POINTS BETWEEN DESIGNATED POINTS THE GRADE SHALL BE ESTABLISHED SO AS TO CONFORM TO A STRAIGHT LINE DRAWN BETWEEN SAID DESIGNATED POINTS.  
ELEVATIONS ARE IN FEET ABOVE U.S.C. & G.S. SEA LEVEL DATUM OF 1929.  
THIS DRAWING AND THE DATA HEREON ARE HEREBY MADE A PART OF THE SPECIFICATIONS.  
WORK SHALL BE CONSTRUCTED ACCORDING TO STANDARD SPECIFICATIONS DATED MAY 25, 1964 ON FILE IN THE OFFICE OF THE COUNTY ENGINEER AND SHALL BE PROSECUTED ONLY IN THE PRESENCE OF THE COUNTY ENGINEER.  
BEFORE WORK CAN BE STARTED, THE CONTRACTOR MUST OBTAIN A PERMIT TO EXCAVATE IN COUNTY STREETS FROM THE L.A. COUNTY ROAD DEPT., DISTRICT OFFICE NO. 3, AND PAY A FEE TO THE COUNTY ENGINEER, ROOM 300, COUNTY ENGINEERING BUILDING, 108 WEST SECOND STREET OR PALOS VERDES CANYONELLA HILLS, REGIONAL OFFICE, SUFFICIENT TO COVER THE COST OF CONSTRUCTION INSPECTION AND SECOND PLANS.  
APPROVAL OF THIS PLAN BY THE COUNTY OF LOS ANGELES DOES NOT CONSTITUTE A REPRESENTATION AS TO THE ACCURACY OF THE LOCATION OR THE EXISTENCE OR NON-EXISTENCE OF ANY UNDERGROUND UTILITY PIPE, OR STRUCTURE WITHIN THE LIMITS OF THE PROJECT. THIS NOTE APPLIES TO ALL PAGES.  
IF WORK IS TO BE DONE IN A STATE HIGHWAY, A PERMIT MUST BE OBTAINED FROM THE STATE OF CALIFORNIA, DIVISION OF HIGHWAY, 120 SOUTH SPRING STREET, LOS ANGELES, CALIFORNIA.

COUNTY OF LOS ANGELES, CALIFORNIA  
JOHN A. LAMBIE, COUNTY ENGINEER  
APPROVED BY: [Signature]  
SUBMITTED BY: [Signature]  
CHECKED BY: [Signature]  
J. N. 0362.82

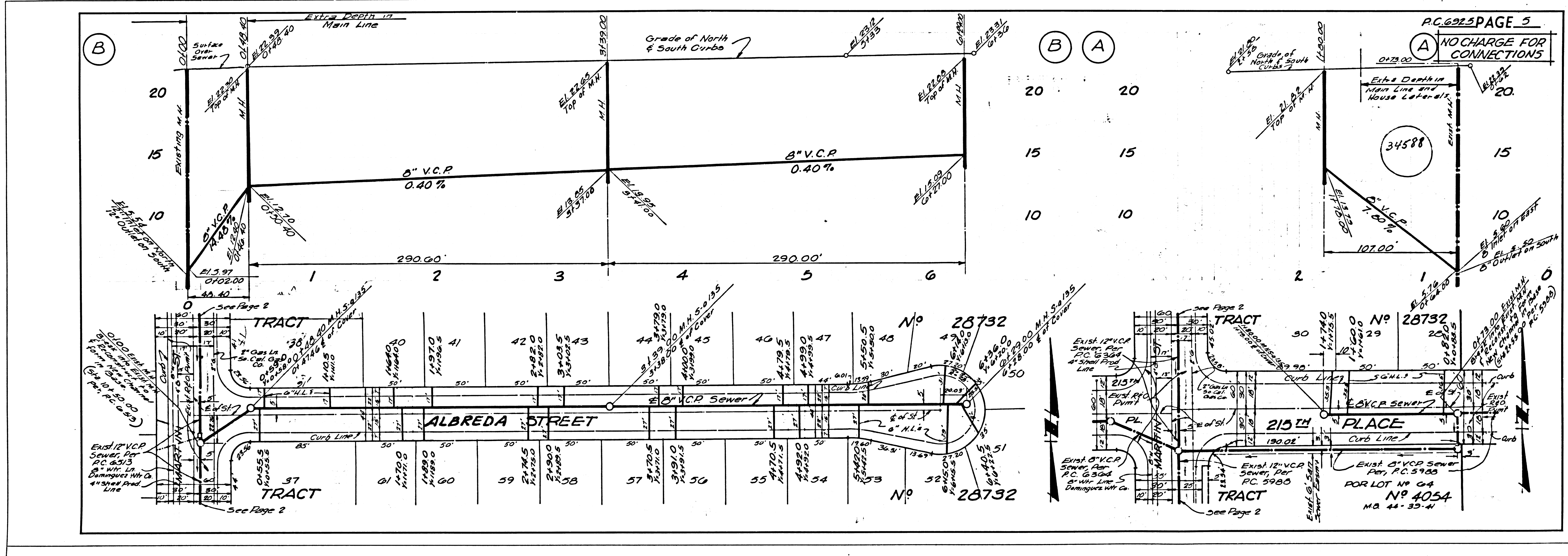


P.C. 6925 PAGE 2  
NO CHARGE FOR CONNECTIONS

34585



22-51



TRACT NO 28732

TRACT NO 4054  
POR LOT NO 64  
MA 44-35-W