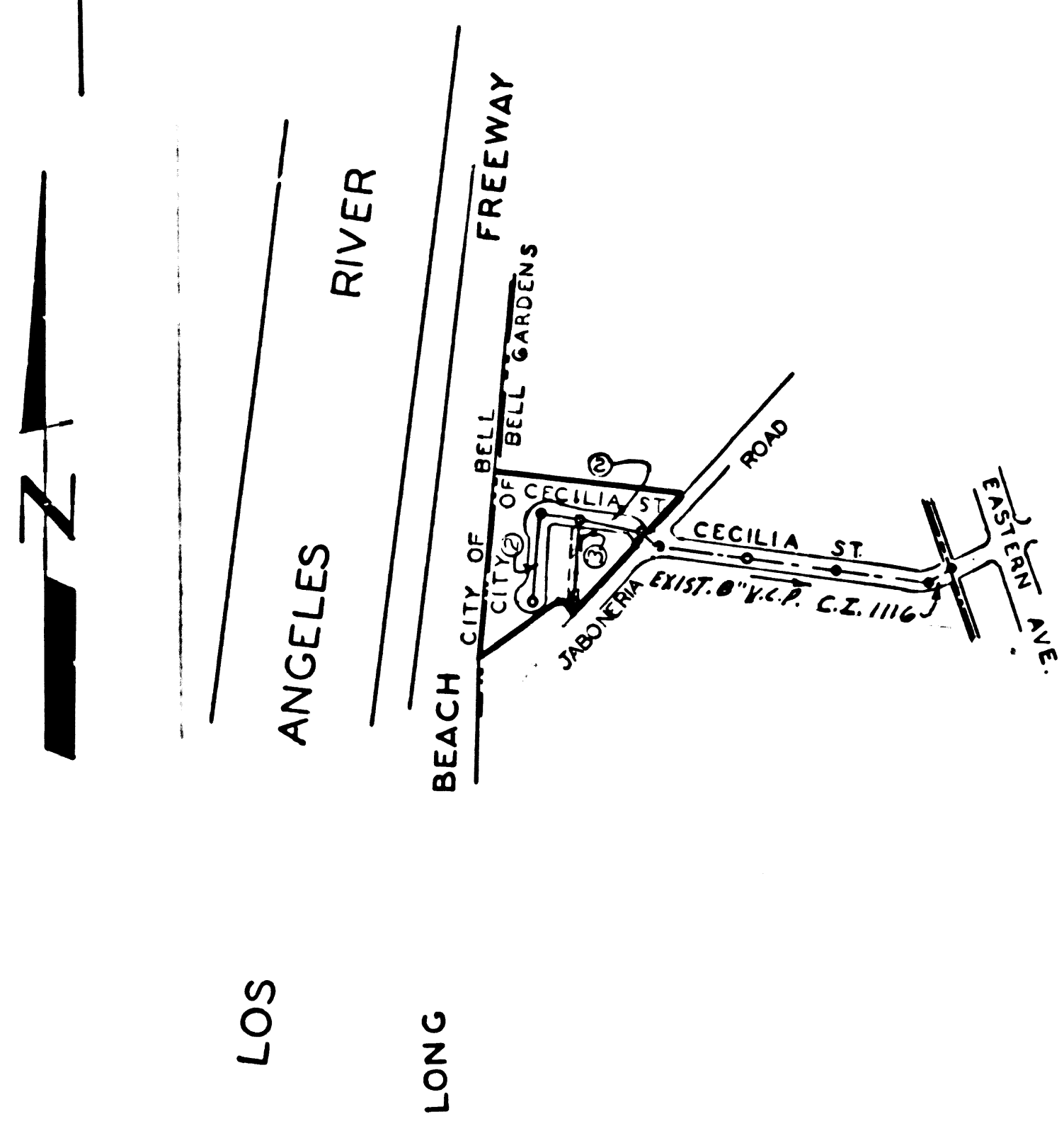


B.M. 59672 ELEV. 112.471
 L & T WEST CURB OF EASTERN AVE.
 4'-1" E.O. OF CURB RETURN AT 3' W. COR.
 OF EASTERN AVE. & JABONARIA RD.
 SOUTH GATE QUAD. 1955



INDEX MAP
 SCALE: 1" = 600'
 TRACT NO. 28009

CITY OF BELL GARDENS BLDG. DIST. NO. 1.02

PROFILE ALIGNMENT AND GRADE OF **P.C.6926**
SANITARY SEWERS PAGE 1
 TO BE CONSTRUCTED IN

TRACT NO. 28009

PRIVATE CONTRACT NO. 6926

W.S. 32

2 SHEETS, 4 PAGES

SCALE: VERT. 1" = 4' HORIZ. 1" = 40' FEBRUARY 3, 1964

PREPARED IN THE OFFICES OF

TECHNOLOGICAL ENGINEERING CORP.

By *Robert J. Parkhurst*
 REG. C. E. NO. 7839

FOR LEGEND SEE PLAN NO. S-6-64

NOTE: GRADES TO WHICH THIS IMPROVEMENT IS TO BE CONSTRUCTED ARE SHOWN ON PLANS AND PROFILES. GRADE POINTS FOR TOP OF CURBS, CENTER LINE OF STREETS, OR CENTER LINE OF ALLEYS ARE SHOWN BY CIRCLES ON PROFILES AT ALL POINTS BETWEEN DESIGNATED POINTS. THE GRADE SHALL BE ESTABLISHED SO AS TO CONFORM TO A STRAIGHT LINE DRAWN BETWEEN SAID DESIGNATED POINTS. ELEVATIONS ARE IN FEET ABOVE U.S.C. & G.S. SEA LEVEL DATUM OF 1929. THE DRAWING AND THE DATA HEREON ARE HEREBY MADE A PART OF THE SPECIFICATIONS. WORK SHALL BE CONSTRUCTED ACCORDING TO STANDARD SPECIFICATIONS DATED MAY 25, 1962, ON FILE IN THE OFFICE OF THE CITY ENGINEER AND SHALL BE PROCURED ONLY IN THE PRESENCE OF THE CITY ENGINEER. BEFORE WORK CAN BE STARTED, THE CONTRACTOR MUST OBTAIN A PERMIT TO EXCAVATE IN CITY STREETS FROM THE L.A. COUNTY ROAD DISTRICT OFFICE NO. 1111 AND PAY A FEE TO THE CITY ENGINEER, CITY OF BELL GARDENS, 2312 EASTERN AVENUE. CONSTRUCTION INSPECTION AND RECORD PLANS. APPROVAL OF THIS PLAN BY THE CITY OF BELL GARDENS DOES NOT CONSTITUTE A REPRESENTATION AS TO THE ACCURACY OF THE LOCATION OF OR THE EXISTENCE OR NON-EXISTENCE OF ANY UNDERGROUND UTILITY PIPE, OR STRUCTURE WITHIN THE LIMITS OF THIS PROJECT. THIS NOTE APPLIES TO ALL PAGES. IF WORK IS TO BE DONE IN A STATE HIGHWAY, A PERMIT MUST BE OBTAINED FROM THE STATE OF CALIFORNIA, DIVISION OF HIGHWAYS, 120 SOUTH SPRING STREET, LOS ANGELES, CALIFORNIA.

CITY OF BELL GARDENS, CALIFORNIA
 JOHN A. LAMBIE, CITY ENGINEER J. D. PARKHURST, CHIEF ENGINEER
 CO. SAN. DIST. NO. 12
 APPROVED BY *Robert E. Keller* ASSISTANT SANITATION ENGINEER APPROVED BY *J. D. Parkhurst* CHIEF ENGINEER

CHECKED BY *Ralph Schaffner*
 REG. C. E. NO. 13906

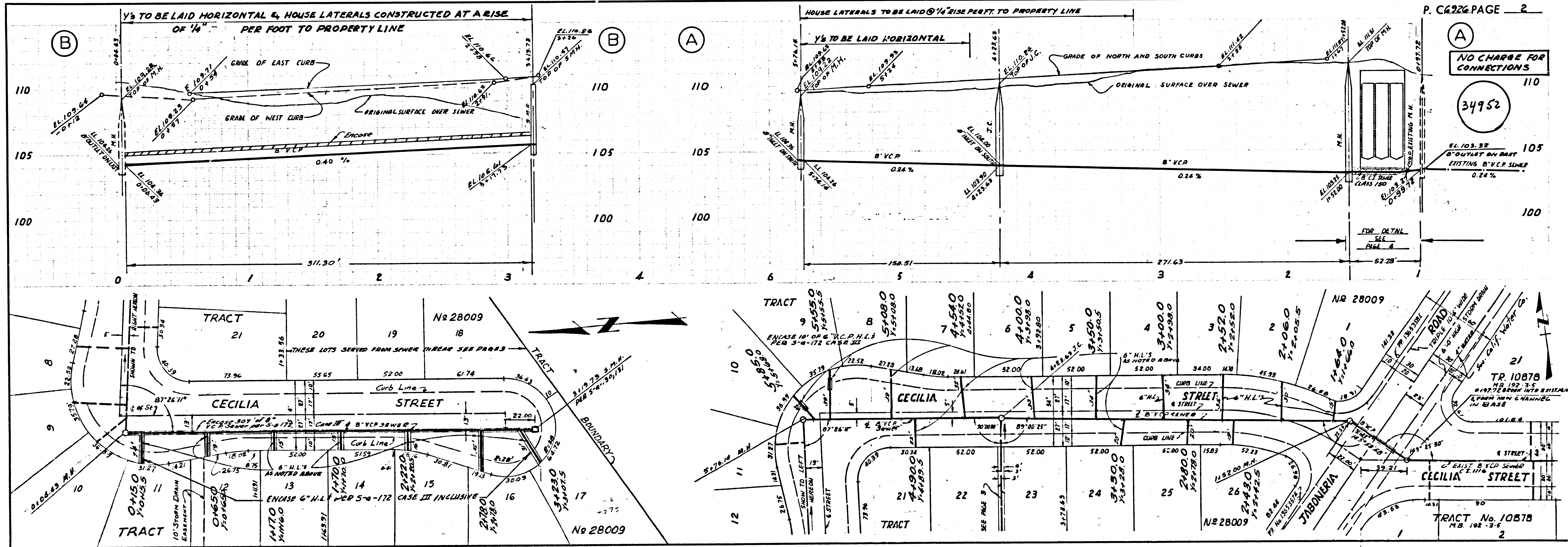
20. THE SEWER LINE ACROSS JABONARIA RD. (STATION 0+15 TO STATION 0+40) SHALL BE 8" C.I. CLASS 150 WITH COMPRESSION JOINTS.
21. THE SEWER SHALL BE LAID ON A SAND BEDDING HAVING A MINIMUM THICKNESS OF 4".
22. THE CAST IRON PIPE SHALL BE LAID SO THAT THE JOINTS WILL BE WITHIN THE WALLS OF THE STORM DRAIN.
23. THE SEWER LINE WITHIN THE BOX CULVERT AND FOR A DISTANCE OF 3' OUTSIDE THE CULVERT SHALL BE ENCASED IN CONCRETE AS SHOWN ON THE PLANS.
24. ALL CONCRETE SHALL BE HIGH BODY STRENGTH TESTING 3000 P.S.I. @ 28 DAYS.
25. ALL WORK SHALL BE ACCOMPLISHED BETWEEN APRIL 16, 1964 AND OCT 15, 1964.

- NOTE:
1. PROVIDE STAKES ON THE PROPERTY LINE OR PROPERTY LINES PRODUCED AT RIGHT ANGLES TO THE SEWER LINE AT THE CENTER LINE OF EACH MANHOLE.
 2. NO REPRESENTATIVE OF THE CITY ENGINEER WILL SURVEY OR LAY OUT ANY PORTION OF THE WORK.
 3. THE PRIVATE ENGINEER SHALL FURNISH THE CITY ENGINEER WITH GRADE SHEETS AND STATIONING FOR ALL HOUSE LATERALS AND Y BRANCHES AND SHALL PROVIDE STAKES FOR THEM AT THEIR PROPER LOCATIONS WITH STATIONING PLAINLY MARKED. ALL HOUSE LATERALS SHALL BE CONSTRUCTED IN A STRAIGHT ALIGNMENT AT RIGHT ANGLES FROM THE MAIN LINE SEWER EXCEPT AS SHOWN ON THE PLANS. HOUSE LATERALS FROM CHIMNEYS SHALL NOT HAVE AN ANGLE OF LESS THAN 45° WITH THE MAIN LINE SEWER. ANY CHANGE IN ALIGNMENT SHALL BE REQUESTED IN WRITING BY THE PRIVATE ENGINEER.
 4. THE PRIVATE ENGINEER SHALL FURNISH THE HOUSE LATERAL CUTS AT THE PROPERTY LINE BELOW THE TOP OF CURB ELEVATION FOR EACH HOUSE LATERAL ON THE GRADE SHEET.
 5. NO REVISIONS SHALL BE MADE IN THESE PLANS WITHOUT THE APPROVAL OF THE CITY ENGINEER.
 6. THE CONTRACTOR SHALL NOTIFY THE CONSTRUCTION DIVISION BY TELEPHONE, MADISON 9-4247, EXT. 81591, AT LEAST TWENTY-FOUR HOURS BEFORE STARTING ANY WORK UNDER THIS CONTRACT.
 7. MANHOLES SHALL BE BRICK SEWER STRUCTURES PER S-104 PRECAST CONCRETE MANHOLES PER S-155 OR S-172 MAY BE USED AS AN ALTERNATE IN LOCATIONS APPROVED BY THE CITY ENGINEER.
 8. USE STANDARD MANHOLE FRAMES AND COVERS, S-117, EXCEPT AS NOTED.
 9. MANHOLE TOPS IN UNIMPROVED RIGHTS-OF-WAY TO BE SIX INCHES ABOVE FINISHED GRADE.
 10. USE EXTRA STRENGTH PIPE. ALL PIPE IS STANDARD DEPTH EXCEPT AS NOTED.
 11. USE MECHANICAL COMPRESSION JOINTS FOR ALL V.C.P. JOINTS PER SPECS. SECS. 36, 44 & 49.

12. IF A POWER POLE IS WITHIN THREE FEET OF THE SEWER, THE SEWER SHALL BE ENCASED, PER S-172, CASE III, TWO FEET ON EACH SIDE FROM THE POINT OF INTERFERENCE.
13. IF DURING THE COURSE OF CONSTRUCTION IT IS DETERMINED THAT THERE IS LESS THAN FOUR FEET OF COVER OVER THE TOP OF A MAIN LINE OR HOUSE LATERAL V.C.P. SEWER WHICH IS NOT INDICATED ON THE PLANS, THE PIPE SHALL BE ENCASED PER S-172, CASE III, UNLESS OTHERWISE APPROVED BY THE CITY ENGINEER.
14. HOUSE LATERALS TO BE CONSTRUCTED WITH INVERTS AT PROPERTY LINE... 6" FEET BELOW CURB GRADE EXCEPT AS NOTED. IN ACCORDANCE WITH PERMITS.
15. FOR ALLOWABLE LEAKAGE USE FORMULA NO. 2, SPECS. SEC. 54.
16. THE CONTRACTOR SHALL NOT WORK IN MORE THAN ONE (1) SECTION OF THE BOX CULVERT.
17. AT ALL TIMES TO PROVIDE FOR THE REMOVAL OF SURFACE DUNPERS AND STORM WATERS. CONSTRUCT DRAINAGE SAND BAGS FILL WITH CLAY TO DIRECT FLOW. BEDDING TO BE LOCATED ABOVE OPENINGS IN WALLS. SEE DETAIL PAGE 2.
18. CONCRETE SHALL BE SOW CUT TO A MINIMUM DEPTH OF 1".
19. EXISTING REINFORCEMENT MAY BE CUT AND BENT BACK WHERE NECESSARY FOR THE INSTALLATION OF THE SEWER LINE. AFTER SEWER LINE IS INSTALLED, THE REINFORCEMENT SHALL BE BENT BACK INTO ITS ORIGINAL POSITION AND REINFORCED AS INDICATED ON THE PLANS. EXISTING STEEL WITHIN 24" LONG. PROVIDE ADDITIONAL REINFORCEMENT AS SHOWN IN SECTION A-A.

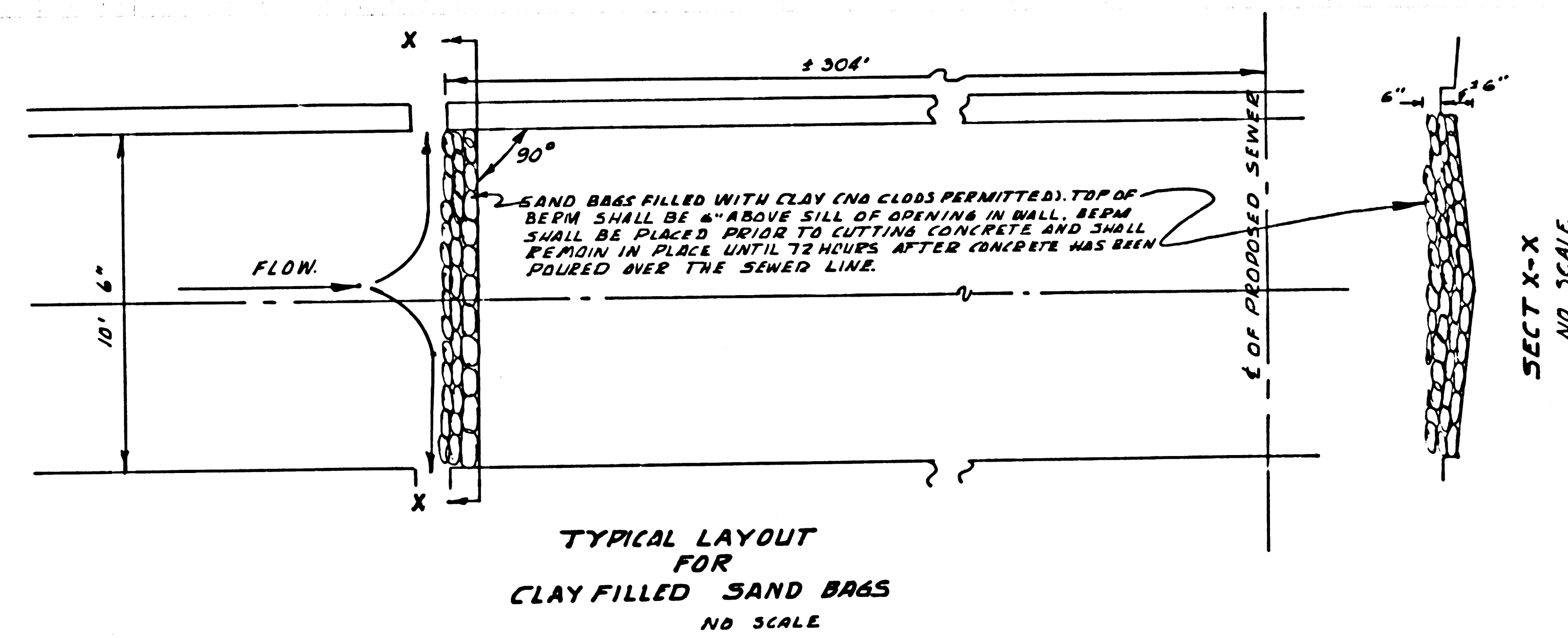
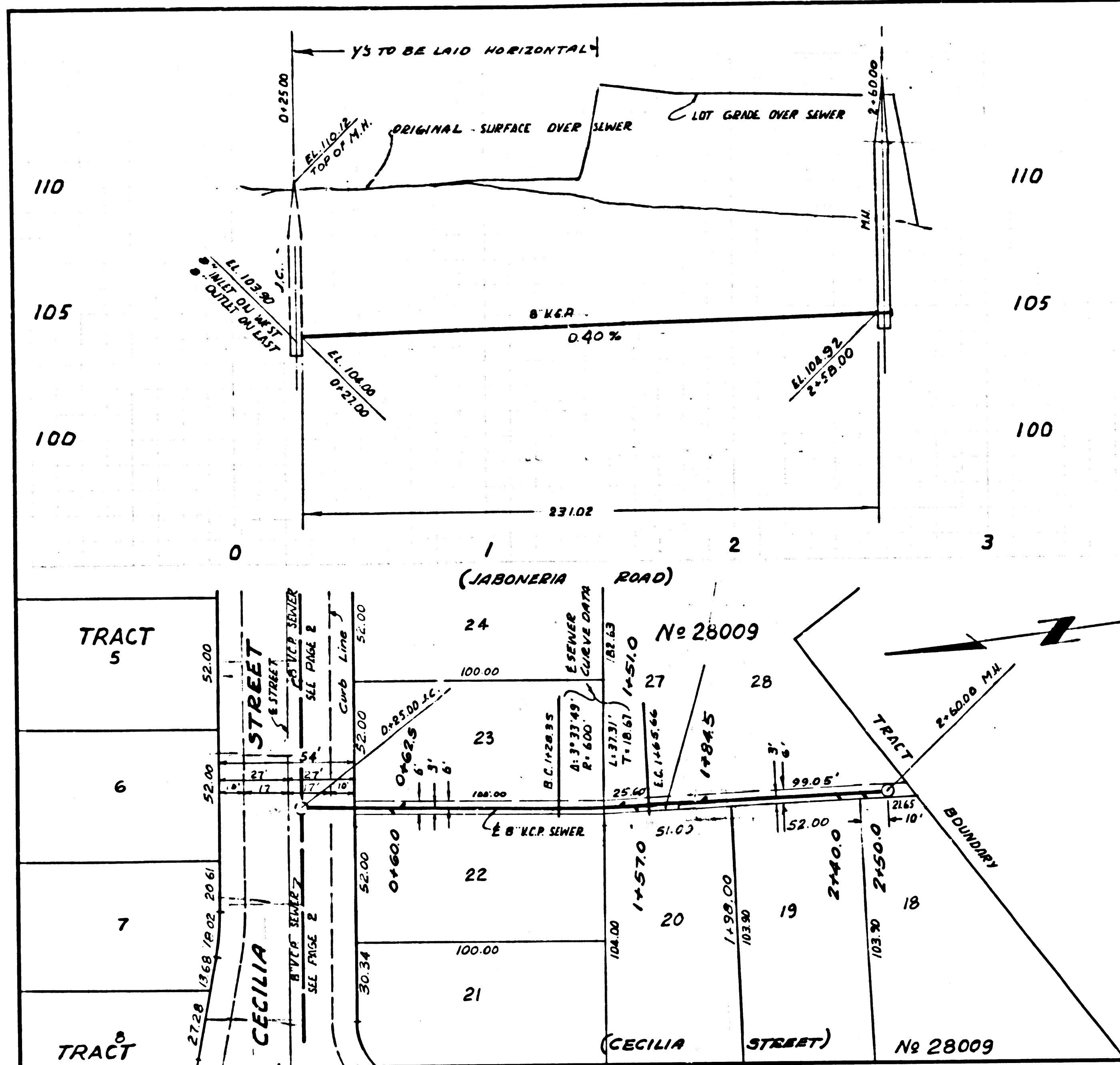
COLLECT CHARGES AS INDICATED
L. Parker 5-11-64

NO CONNECTIONS FOR THE DISPOSAL OF INDUSTRIAL WASTES SHALL BE MADE TO SEWERS SHOWN ON THESE DRAWINGS WITHOUT WRITTEN PERMISSION FROM THE CHIEF ENGINEER AND GENERAL MANAGER OF THE COUNTY SANITATION DISTRICTS

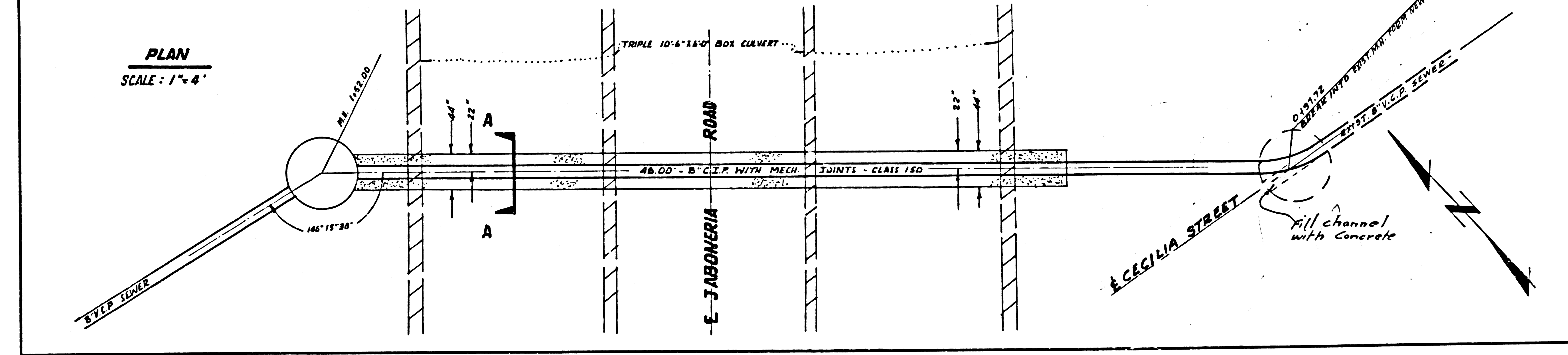
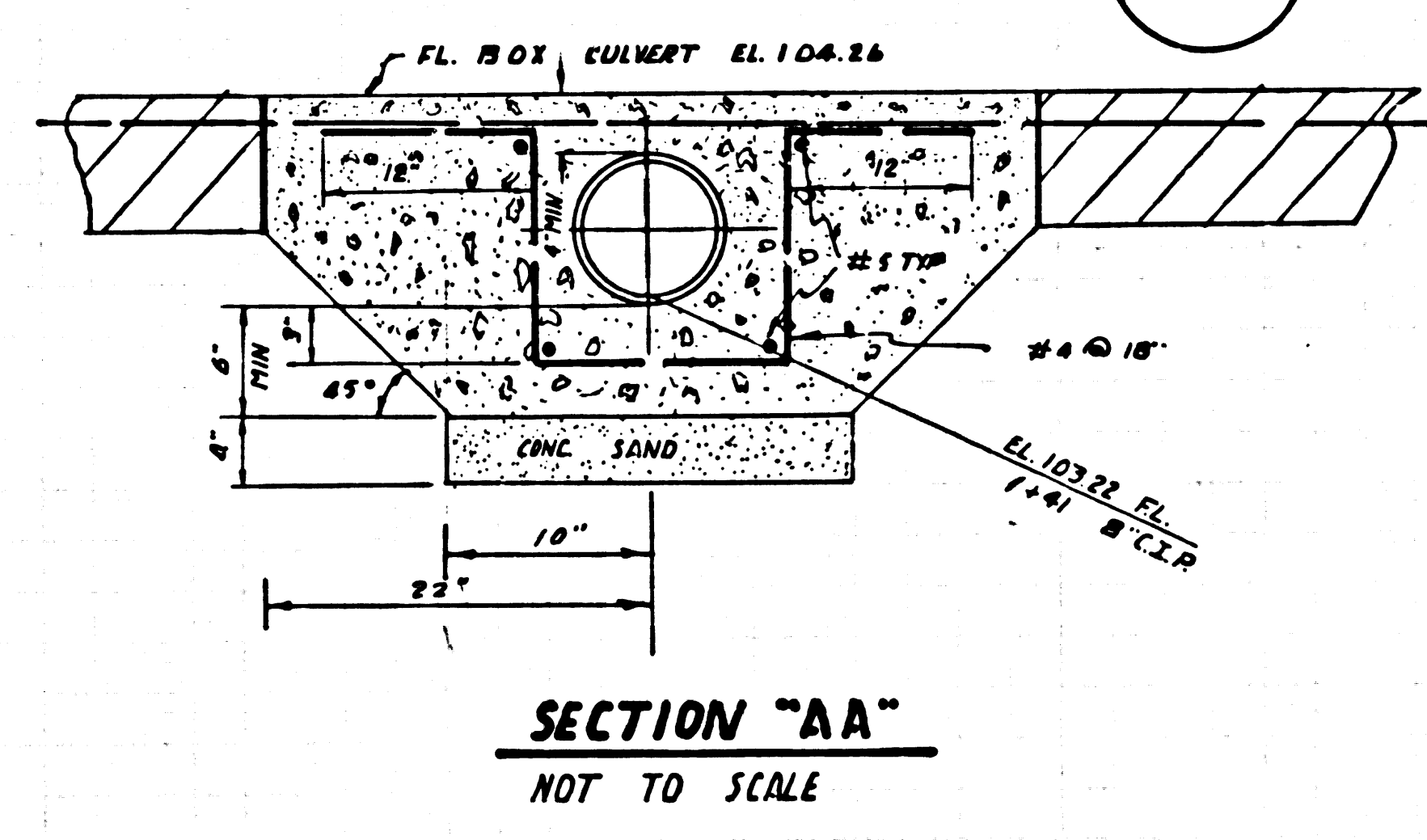
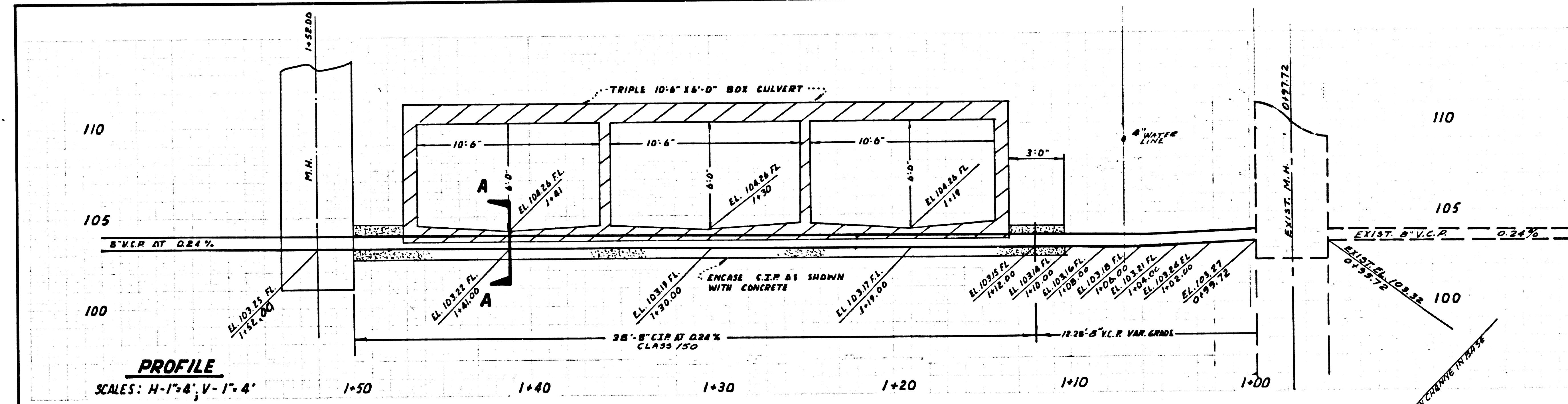


NO CHARGE FOR CONNECTIONS

34953



34954



DETAIL PLAN AND PROFILE CROSSING UNDER BOX CULVERT AT JABONERIA AND CECILIA SCALE AS SHOWN