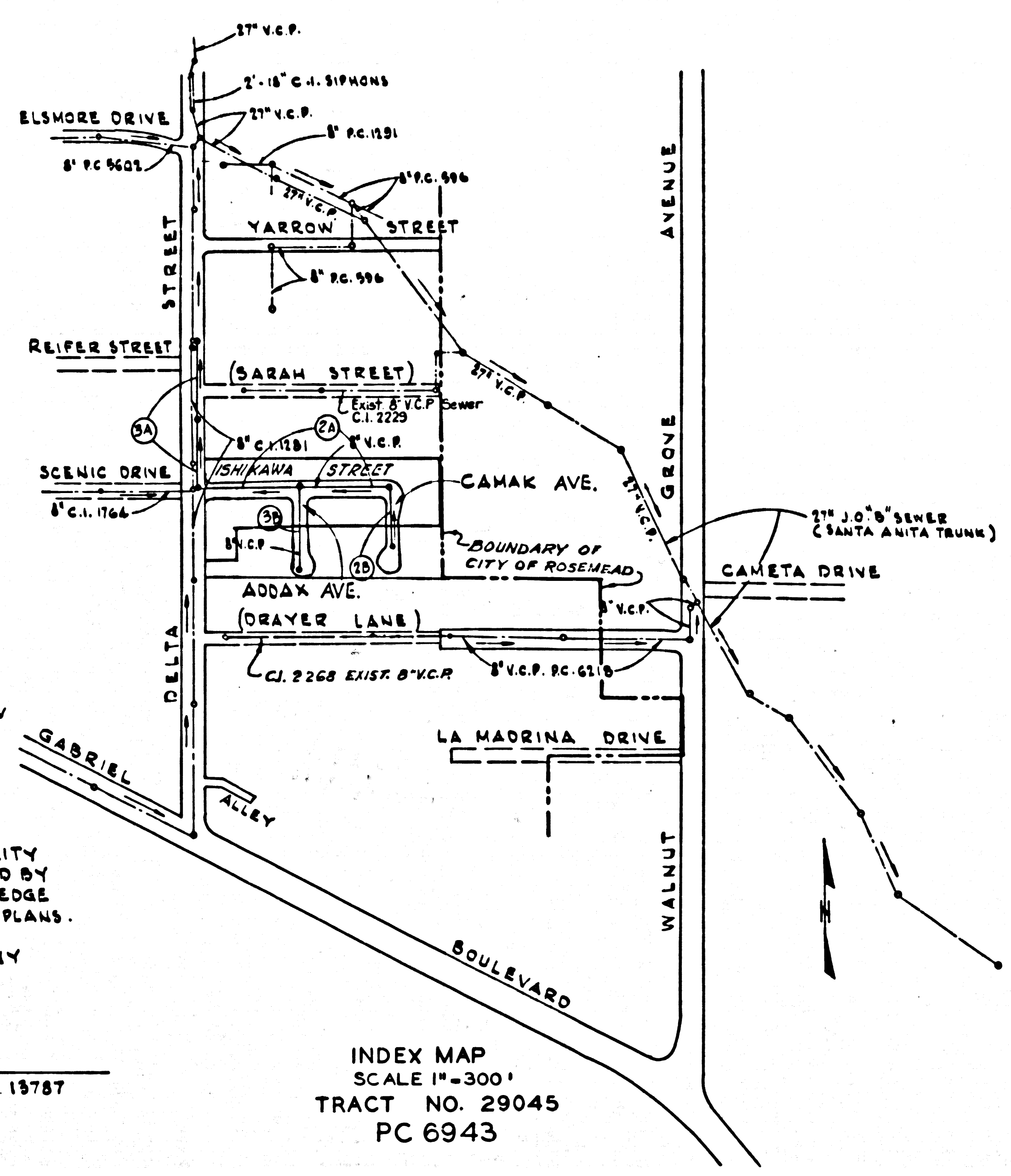


B.M. 94 3322 ELEV. 317.363  
 SPIKE AND LEAD IN SOUTHWEST  
 CORNER OF CONCRETE BASE OF GAS  
 ISLAND AT NORTHEAST CORNER OF  
 DELTA STREET AND SAN GABRIEL BLVD.  
 BASELINE QUAD. 1955



**PRIVATE ENGINEER'S NOTICE TO CONTRACTORS.**  
 THE EXISTENCE AND LOCATION OF ANY UNDERGROUND UTILITY  
 PIPES OR STRUCTURES SHOWN ON THESE PLANS ARE OBTAINED BY  
 A SEARCH OF AVAILABLE RECORDS TO THE BEST OF MY KNOWLEDGE.  
 THERE ARE NO EXISTING UTILITIES EXCEPT AS SHOWN ON THESE PLANS.  
 THE CONTRACTOR IS REQUIRED TO TAKE DUE PRECAUTIONARY  
 MEASURES TO PROTECT THE UTILITY LINES SHOWN AND OR ANY  
 OTHER LINES OF RECORD OR NOT SHOWN ON THESE PLANS.  
 PACIFIC-WESTERN ENGINEERING CORPORATION  
 BY: *Daniel Markoff*  
 DANIEL MARKOFF R.C.E. NO. 13787

INDEX MAP  
 SCALE 1"=300'  
 TRACT NO. 29045  
 PC 6943

TEMPLE CITY BLDG. DIST. NO. 5

- NOTE:
1. PROVIDE STAKES ON THE PROPERTY LINE OR PROPERTY LINES PRODUCED AT RIGHT ANGLES TO THE SEWER LINE AT THE CENTER LINE OF EACH MANHOLE.
  2. NO REPRESENTATIVE OF THE COUNTY ENGINEER WILL SURVEY OR LAY OUT ANY PORTION OF THE WORK.
  3. THE PRIVATE ENGINEER SHALL FURNISH THE COUNTY ENGINEER WITH GRADE SHEETS AND STATIONING FOR ALL HOUSE LATERALS AND Y BRANCHES AND SHALL PROVIDE STAKES FOR THEM AT THEIR PROPER LOCATIONS WITH STATIONING PLANNED MARKED. ALL HOUSE LATERALS SHALL BE CONSTRUCTED IN A STRAIGHT ALIGNMENT AT RIGHT ANGLES FROM THE MAIN LINE SEWER EXCEPT AS SHOWN ON THE PLANS. HOUSE LATERALS FROM CHIMNEYS SHALL NOT HAVE AN ANGLE OF LESS THAN 45° WITH THE MAIN LINE SEWER. ANY CHANGE IN ALIGNMENT SHALL BE REQUESTED BY WRITING BY THE PRIVATE ENGINEER.
  4. THE PRIVATE ENGINEER SHALL FURNISH THE HOUSE LATERAL DEPTH AT THE PROPERTY LINE BELOW THE TOP OF CURB ELEVATION FOR EACH HOUSE LATERAL ON THE GRADE SHEET.
  5. NO BYSTANDS SHALL BE MADE IN THESE PLANS WITHOUT THE APPROVAL OF THE COUNTY ENGINEER.
  6. THE CONTRACTOR SHALL NOTIFY THE CONSTRUCTION DIVISION BY TELEPHONE, MADISON 9-4747, EXT. 8138, AT LEAST TWENTY-FOUR HOURS BEFORE STARTING ANY WORK UNDER THE CONTRACT.
  7. MANHOLES SHALL BE BRICK SEWER STRUCTURES PER S-304. PRECAST CONCRETE MANHOLES PER S-4135 OR S-3773 MAY BE USED AS AN ALTERNATE IN LOCATIONS APPROVED BY THE COUNTY ENGINEER.
  8. USE STANDARD MANHOLE FRAMES AND COVERS, S-377, EXCEPT AS NOTED.
  9. MANHOLE TOPS IN UNIMPROVED AREAS OR WAYS TO BE 305 INCHES ABOVE FINISHED GRADE.
  10. USE EXTRA STRENGTH PIPE. ALL PIPE IS STANDARD DEPTH EXCEPT AS NOTED.
  11. USE MECHANICAL COMPRESSION JOINTS FOR ALL V.C.P. JOINTS PER SPEC., SECS. 34 & 48 & 44-D.
  12. WHERE EVER GROUND WATER IS ENCOUNTERED DURING THE CONSTRUCTION OF THE SEWERS, THE V.C.P. JOINTS SHALL BE MECHANICAL COMPRESSION JOINTS PER SPEC., SEC. 34.
  13. IF A POWER POLE IS WITHIN THREE FEET OF THE SEWER, THE SEWER SHALL BE ENCASED, PER S-172, CASE III, TWO FEET ON EITHER SIDE FROM THE POINT OF INTERFERENCE.
  14. IF DURING THE COURSE OF CONSTRUCTION IT IS DETERMINED THAT THERE IS LESS THAN FOUR FEET OF COVER OVER THE TOP OF A MAIN LINE OR HOUSE LATERAL V.C.P. SEWER WHICH IS NOT INDICATED ON THE PLANS, THE PIPE SHALL BE ENCASED PER S-172, CASE III, UNLESS OTHERWISE APPROVED BY THE COUNTY ENGINEER.
  15. HOUSE LATERALS TO BE CONSTRUCTED WITH INVERTS AT PROPERTY LINE, 6" V.C.P. FEET BELOW CURB GRADE EXCEPT AS NOTED.
  16. RESURFACES ALL AREAS WITHIN PAVED AREAS TO MEET L.A. COUNTY ROAD DEPT. OR CALIFORNIA STATE HIGHWAY REQUIREMENTS IN ACCORDANCE WITH PERMITS.
  17. FOR ALLOWABLE LEAKAGE TEST USE FORMULA NO. 2, SPEC., SEC. 54.
  18. ALL STATE AND LOCAL TRENCH SAFETY ORDERS WILL BE RIGIDLY ENFORCED.

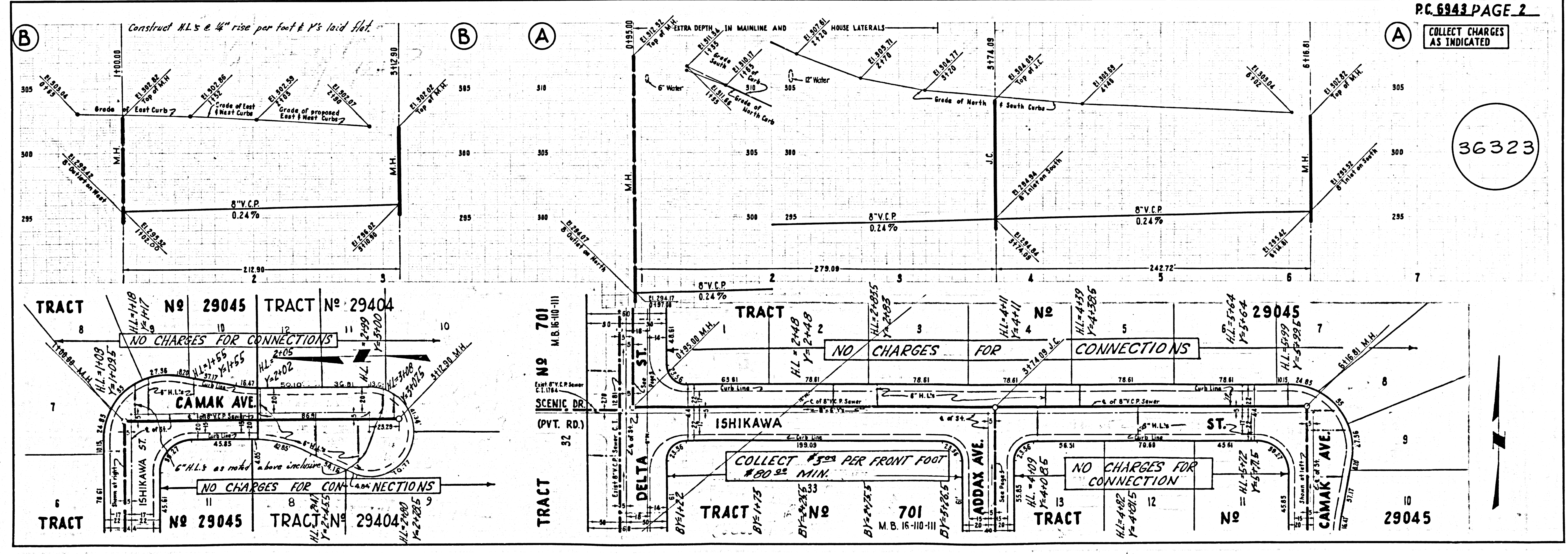
NO CONNECTIONS FOR THE DISPOSAL OF  
 INDUSTRIAL WASTES SHALL BE MADE TO  
 SEWERS SHOWN ON THESE DRAWINGS  
 WITHOUT WRITTEN PERMISSION FROM THE  
 CHIEF ENGINEER AND GENERAL MANAGER  
 OF THE COUNTY SANITATION DISTRICTS.

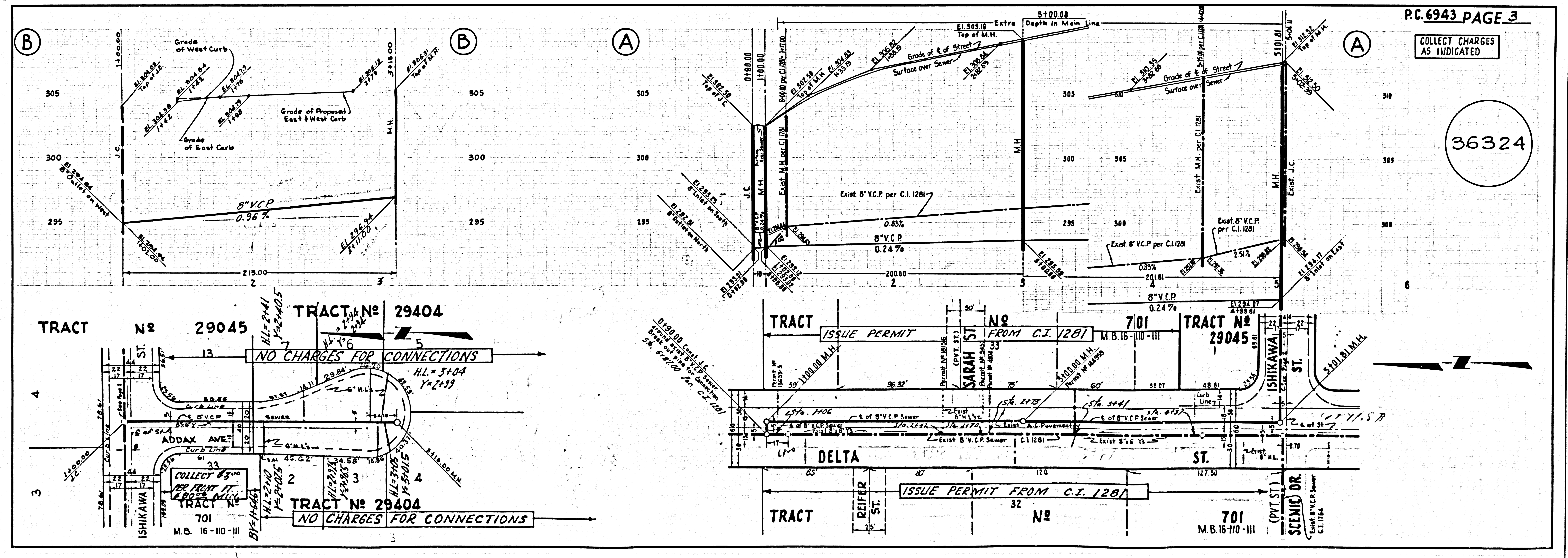
COLLECT CHARGES  
 AS INDICATED  
*W. J. Taylor 11/1/54*

PROFILE ALIGNMENT AND GRADE OF **P.C. 6943**  
**SANITARY SEWERS** PAGE 1  
 TO BE CONSTRUCTED IN  
 TRACT NO. 29045  
 TRACT NO. 29404  
**PRIVATE CONTRACT NO. 6943**  
 W.S. 36  
 2 SHEETS, 3 PAGES  
 SCALE: VERT. 1"=4' HORIZ. 1"=40'  
 MARCH, 1954  
 PREPARED IN THE OFFICES OF  
 PACIFIC-WESTERN ENGINEERING CORP.  
 1825 W. LOMITA BLVD. LOMITA, CALIF.  
 BY: *Daniel Markoff*  
 REG. C.E. NO. 13787  
 FOR LEGEND SEE PLAN NO. S-4-64

NOTE:  
 GRADES TO WHICH THIS IMPROVEMENT IS TO BE CONSTRUCTED ARE SHOWN ON PLANS AND PROFILES. GRADE POINTS FOR TOP OF CURB, CENTER LINE OF STREETS, OR CENTER LINE OF ALLEYS ARE SHOWN BY CIRCLES ON PROFILES. ALL POINTS BETWEEN DESIGNATED POINTS THE GRADE SHALL BE ESTABLISHED SO AS TO CONFORM TO A STRAIGHT LINE DRAWN BETWEEN SAID DESIGNATED POINTS. ELEVATIONS ARE IN FEET ABOVE U.S.C. & G.S. MEAN SEA LEVEL DATUM OF 1929.  
 THIS DRAWING AND THE DATA HEREON ARE HEREBY MADE A PART OF THE SPECIFICATIONS.  
 WORK SHALL BE CONSTRUCTED ACCORDING TO STANDARD SPECIFICATIONS DATED JULY 18, 1944, ON FILE IN THE OFFICE OF THE COUNTY ENGINEER AND SHALL BE PROSECUTED ONLY IN THE PRESENCE OF THE COUNTY ENGINEER.  
 BEFORE WORK CAN BE STARTED, THE CONTRACTOR MUST OBTAIN A PERMIT TO EXCAVATE IN COUNTY STREETS FROM THE L.A. COUNTY ROAD DEPT., DISTRICT OFFICE NO. 2, AND PAY A FEE TO THE COUNTY ENGINEER, ROOM 300, COUNTY ENGINEERING BUILDING, 100 WEST SECOND STREET, SAN GABRIEL VALLEY.  
 APPROVAL OF THIS PLAN BY THE COUNTY OF LOS ANGELES DOES NOT CONSTITUTE A REPRESENTATION AS TO THE ACCURACY OF THE LOCATION OR OF THE EXISTENCE OR NON-EXISTENCE OF ANY UNDERGROUND UTILITY PIPE, OR STRUCTURE WITHIN THE LIMITS OF THIS PROJECT. THIS NOTE APPLIES TO ALL PAGES.  
 IF WORK IS TO BE DONE IN A STATE HIGHWAY, A PERMIT MUST BE OBTAINED FROM THE STATE OF CALIFORNIA, DIVISION OF HIGHWAYS, 126 SOUTH SPRING STREET, LOS ANGELES, CALIFORNIA.

COUNTY OF LOS ANGELES, CALIFORNIA  
 JOHN A. LAMBIE, COUNTY ENGINEER  
 J. D. PARKHURST, CHIEF ENGINEER  
 APPROVED BY: *Paul S. Miller* ASSISTANT SANITATION ENGINEER  
 APPROVED BY: *J. D. Parkhurst* OFFICE ENGINEER  
 SUBMITTED BY: *M. S. Brinkley* REGIONAL ENGINEER  
 CHECKED BY: *J. D. Parkhurst* REG. C.E. NO. 7874  
 36322  
 J.N. 0362.90





16-100-110-III