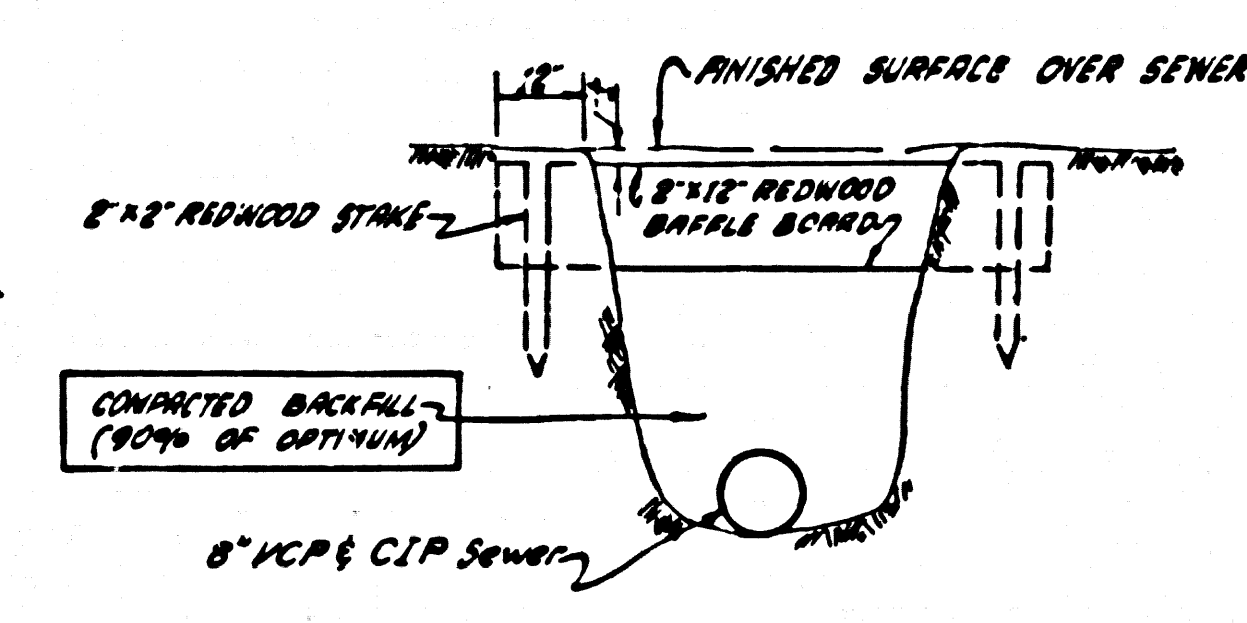
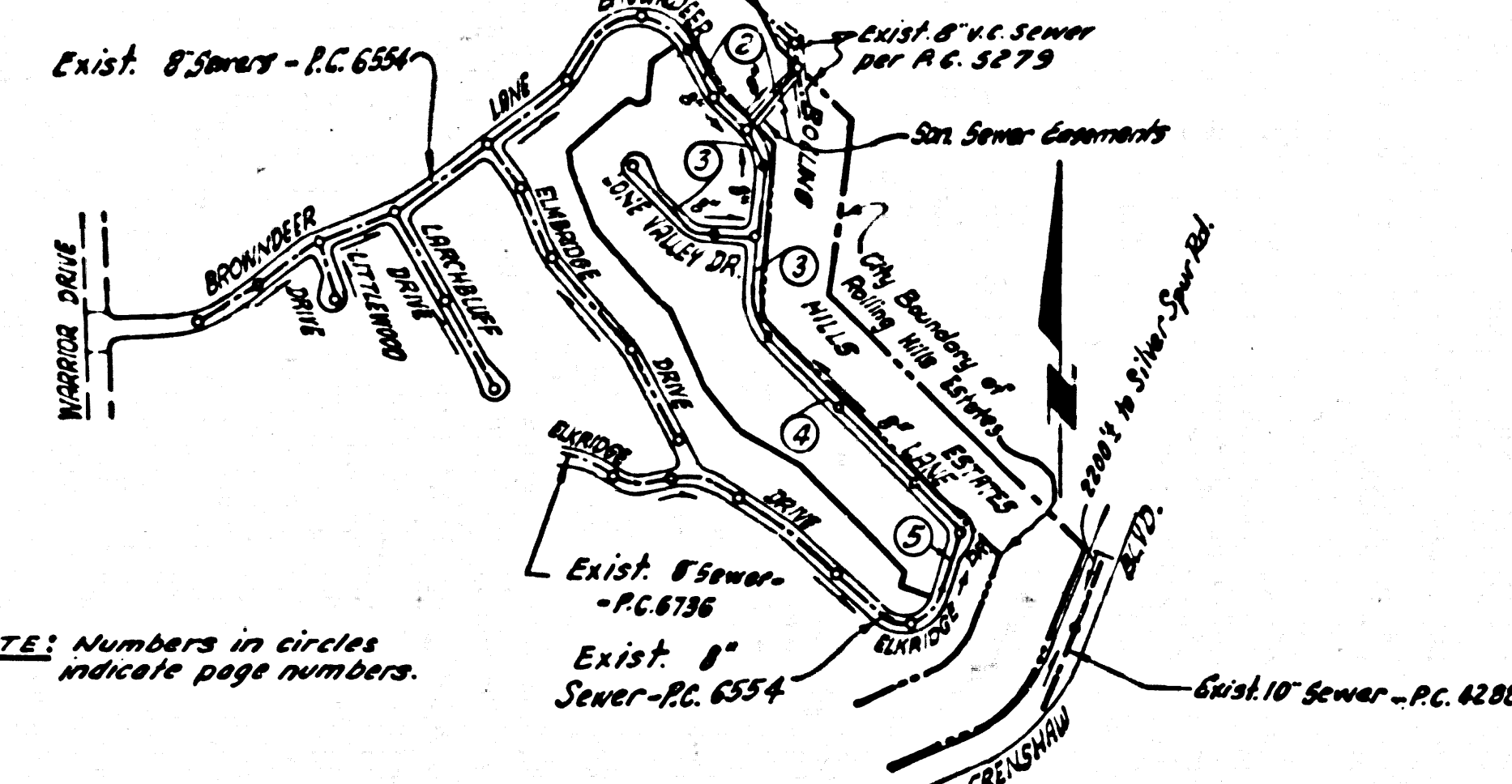


B.M. 5Y-4858 ELEV. 420.098  
 R.O. BR. CAR MON. IN WELL WITH COVER  
 AT CH. INTERSECTION PALOS VERDES  
 DRIVE & CRENSHAW BOULEVARD.  
 PALOS VERDES QUAD. 19 55



**NOTES:**

1. EACH END OF BAFFLE BOARD WILL EXTEND ONE FOOT INTO UNDISTURBED GROUND.
2. THE UPPER LAYER OF BACKFILL TO BE ONE FOOT MINIMUM OF TOPSOIL. TOPSOIL SHALL BE FINISHED IN PLACE AND PLANTED WITH MUSTARD & YE SEED AND ADEQUATELY WATERED UNTIL GROWTH ESTABLISHED.
3. BAFFLE BOARDS SHALL BE SPACED SO THAT THE TOP OF THE LOWER BOARD SHALL BE LEVEL WITH THE BOTTOM OF THE NEXT HIGHER BOARD.



**INDEX MAP**  
 TRACT NO. 29222  
 P.C. 6949  
 Scale: 1" = 600'

**DOUBLE SCALE**  
**LOMITA BLDG. DIST. NO. 12**

PROFILE ALIGNMENT AND GRADE OF  
**SANITARY SEWERS** PAGE 1  
 TO BE CONSTRUCTED IN

**TRACT NO. 29222**  
**PRIVATE CONTRACT NO. 6949**

W.S. 27  
 3 SHEETS, 5 PAGES  
 SCALE: VERT. 1" = 8'  
 HORIZ. 1" = 40'  
 APRIL, 1964  
 PREPARED IN THE OFFICES OF  
**MCINTIRE & QUIROS**  
 REG. C. E. NO. 8583

36408

FOR LEGEND SEE PLAN NO. S-64

**NOTE:**  
 GRADES TO WHICH THIS IMPROVEMENT IS TO BE CONSTRUCTED ARE SHOWN ON PLANS AND PROFILES. GRADE POINTS FOR TOP OF CURBS, CENTER LINE OF STREETS, OR CENTER LINE OF ALLEYS ARE SHOWN BY CIRCLES ON PROFILES. AT ALL POINTS BETWEEN DESIGNATED POINTS THE GRADE SHALL BE ESTABLISHED SO AS TO CONFORM TO A STRAIGHT LINE DRAWN BETWEEN SAID DESIGNATED POINTS. ELEVATIONS ARE IN FEET ABOVE U.S.C. & G.S. SEA LEVEL DATUM OF 1929. THIS DRAWING AND THE DATA HEREON ARE HEREBY MADE A PART OF THE SPECIFICATIONS. BEFORE WORK CAN BE STARTED, THE CONTRACTOR MUST OBTAIN A PERMIT TO EXCAVATE FROM THE COUNTY ENGINEER AND SHALL BE PROSECUTED ONLY IN THE PRESENCE OF THE COUNTY ENGINEER. APPROVAL OF THIS PLAN BY THE COUNTY OF LOS ANGELES DOES NOT CONSTITUTE A REPRESENTATION AS TO THE ACCURACY OF THE LOCATION OF OR THE EXISTENCE OR NON-EXISTENCE OF ANY UNDERGROUND UTILITY PIPE, OR STRUCTURE WITHIN THE LIMITS OF THE PROJECT. THIS NOTE APPLIES TO ALL PAGES. IF WORK IS TO BE DONE IN A STATE HIGHWAY, A PERMIT MUST BE OBTAINED FROM THE STATE OF CALIFORNIA, DIVISION OF HIGHWAYS, 126 SOUTH SPRING STREET, LOS ANGELES, CALIFORNIA.

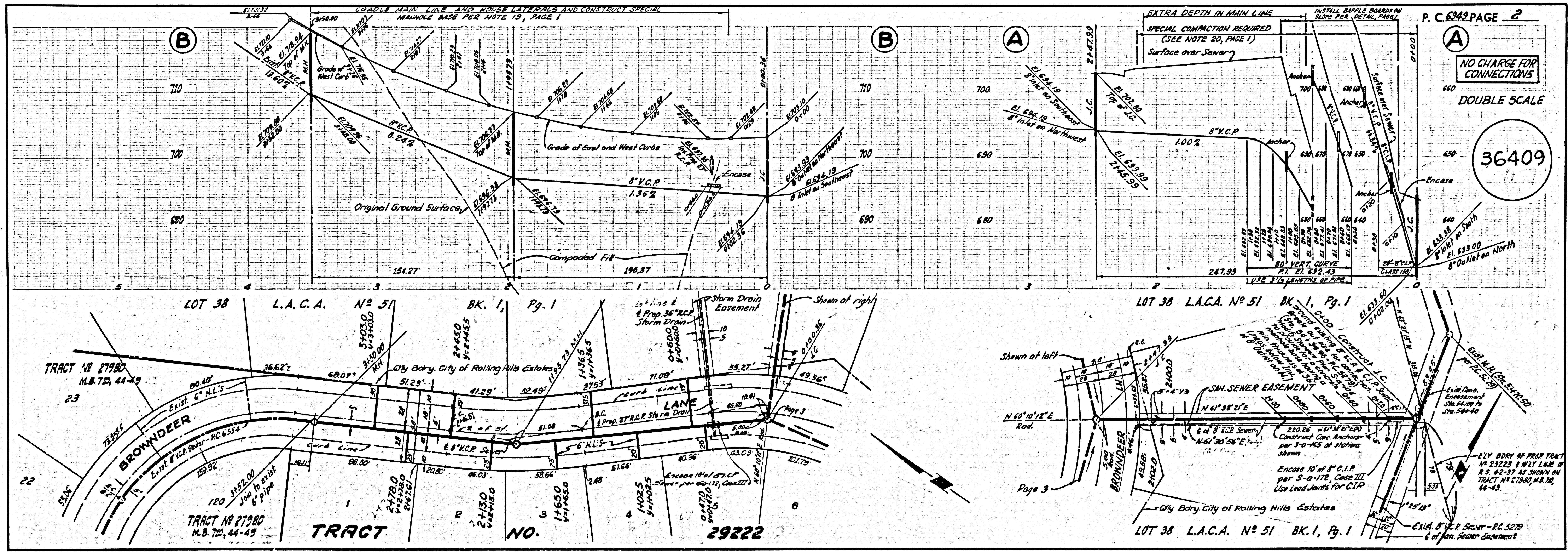
1. PROVIDE STAKES ON THE PROPERTY LINE OR PROPERTY LINES PRODUCED AT RIGHT ANGLES TO THE SEWER LINE AT THE CENTER LINE OF EACH MANHOLE.
2. NO REPRESENTATIVE OF THE COUNTY ENGINEER WILL SURVEY OR LAY OUT ANY PORTION OF THE WORK.
3. THE PRIVATE ENGINEER SHALL FURNISH THE COUNTY ENGINEER WITH GRADE SHEETS AND STATIONING FOR ALL HOUSE LATERALS AND Y-BRANCHES AND SHALL PROVIDE STAKES FOR THEM AT THREE FOOT INTERVALS WITH STATIONING PLAINLY MARKED. ALL HOUSE LATERALS SHALL BE CONSTRUCTED IN A STRAIGHT ALIGNMENT AT RIGHT ANGLES FROM THE MAIN LINE SEWER EXCEPT AS SHOWN ON THE PLANS. HOUSE LATERALS FROM CHIMNEYS SHALL NOT HAVE AN ANGLE OF LESS THAN 45° WITH THE MAIN LINE SEWER. ANY CHANGE IN ALIGNMENT SHALL BE REQUESTED IN WRITING BY THE PRIVATE ENGINEER.
4. THE PRIVATE ENGINEER SHALL FURNISH THE HOUSE LATERAL DEPTH AT THE PROPERTY LINE BELOW THE TOP OF CURB ELEVATION FOR EACH HOUSE LATERAL ON THE GRADE SHEET.
5. NO REVISIONS SHALL BE MADE IN THESE PLANS WITHOUT THE APPROVAL OF THE COUNTY ENGINEER.
6. THE CONTRACTOR SHALL NOTIFY THE CONSTRUCTION DIVISION BY TELEPHONE, MADISON 9-2747, EXT. 8158, AT LEAST TWENTY-FOUR HOURS BEFORE STARTING ANY WORK UNDER THIS CONTRACT.
7. MANHOLES SHALL BE BRICK SEWER STRUCTURES PER S-2-204. PRECAST CONCRETE MANHOLES PER S-2-123 OR S-173 MAY BE USED AS AN ALTERNATE IN LOCATIONS APPROVED BY THE COUNTY ENGINEER.
8. USE STANDARD MANHOLE FRAMES AND COVERS, S-2-117, EXCEPT AS NOTED.
9. MANHOLE TOPS IN UNIMPROVED RIGHTS-OF-WAY TO BE SIX INCHES ABOVE FINISHED GRADE.
10. USE EXTRA STRENGTH PIPE. ALL PIPE IS STANDARD DEPTH EXCEPT AS NOTED.
11. USE MECHANICAL COMPRESSION JOINTS FOR ALL V.C.P. JOINTS PER SPECS. SECS. 24, 407 & 49.
12. IF A POWER POLE IS WITHIN THREE FEET OF THE SEWER, THE SEWER SHALL BE ENCASED PER S-2-172, CASE III, TWO FEET ON EITHER SIDE FROM THE POINT OF INTERFERENCE.
13. IF DURING THE COURSE OF CONSTRUCTION IT IS DETERMINED THAT THERE IS LESS THAN FOUR FEET OF COVER OVER THE TOP OF A MAIN LINE OR HOUSE LATERAL V.C.P. SEWER WHICH IS NOT INDICATED ON THE PLANS, THE PIPE SHALL BE ENCASED PER S-2-172, CASE III, UNLESS OTHERWISE APPROVED BY THE COUNTY ENGINEER.
14. HOUSE LATERALS TO BE CONSTRUCTED WITH INVERTS AT PROPERTY LINE. . . . FEET BELOW CURB GRADE EXCEPT AS NOTED.
15. RESURFACE ALL TRENCHES WITHIN PAVED AREAS TO MEET L.A. COUNTY ROAD DEPT. OR CALIFORNIA STATE HIGHWAY REQUIREMENTS IN ACCORDANCE WITH PERMITS.
16. FOR ALLOWABLE LEAKAGE TEST USE FORMULA NO. . . . . SPECS. SEC. 54.
17. ALL STATE AND LOCAL TRENCH DEPTH DEVICES SHALL BE PROHIBITED.
18. CONSTRUCTION IN FILLED AREAS  
 (a) AN ACCEPTABLE CERTIFICATION OF COMPACTION TEST RESULTS SHALL BE SUBMITTED TO THE CONSTRUCTION DIVISION. COMPACTION TESTS ARE TO BE MADE IN ACCORDANCE WITH U.S.T.A. STANDARD METHOD OF TEST D 1557-62.  
 (b) NO CONSTRUCTION IS PERMITTED IN FILLED AREAS WHERE THE RELATIVE DENSITY OF COMPACTION IS LESS THAN 90%.  
 (c) IF THE RELATIVE DENSITY OF COMPACTION IS LESS THAN 90%, ALL MAIN LINE AND HOUSE LATERALS SHALL BE GRADED FOR 3'-0" OR HAVE A SPECIAL BASE COURSE PER S-2-172, CASE III. SPECIAL MANHOLE BASES PER S-2-117 ARE REQUIRED.  
 (d) IF THE RELATIVE DENSITY OF COMPACTION IS 90% OR GREATER, THE SPECIAL PROVISIONS IN (c) ARE NOT REQUIRED.
19. SPECIAL COMPACTION OF BACKFILL IN THOSE AREAS INDICATED ON THE PLANS WILL CONSIST OF MECHANICALLY TAMPED LAYERS OVER A SAND BASE IN ACCORDANCE WITH SECTION 52 OF THE STANDARD SPECIFICATIONS.

**COLLECT CHARGES AS INDICATED**

NO CONNECTIONS FOR THE DISPOSAL OF INDUSTRIAL WASTES SHALL BE MADE TO SEWERS SHOWN ON THESE DRAWINGS WITHOUT WRITTEN PERMISSION FROM THE CHIEF ENGINEER AND GENERAL MANAGER OF THE COUNTY SANITATION DISTRICTS.

**COUNTY OF LOS ANGELES, CALIFORNIA**  
 JOHN A. LAMBIE, COUNTY ENGINEER  
 APPROVED BY: [Signature]  
 ASSISTANT SANITATION ENGINEER  
 SUBMITTED BY: [Signature]  
 REGIONAL ENGINEER  
 CHECKED BY: [Signature] 6/30/64  
 REG. C. E. NO. 3946

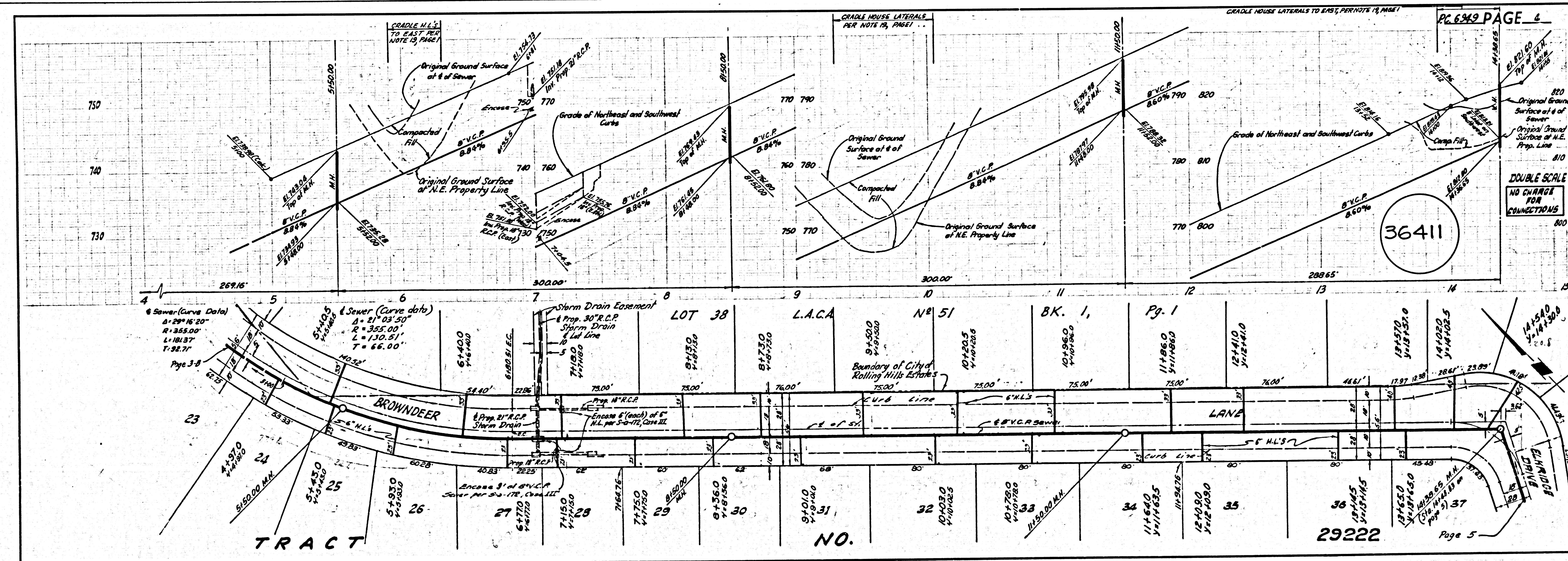
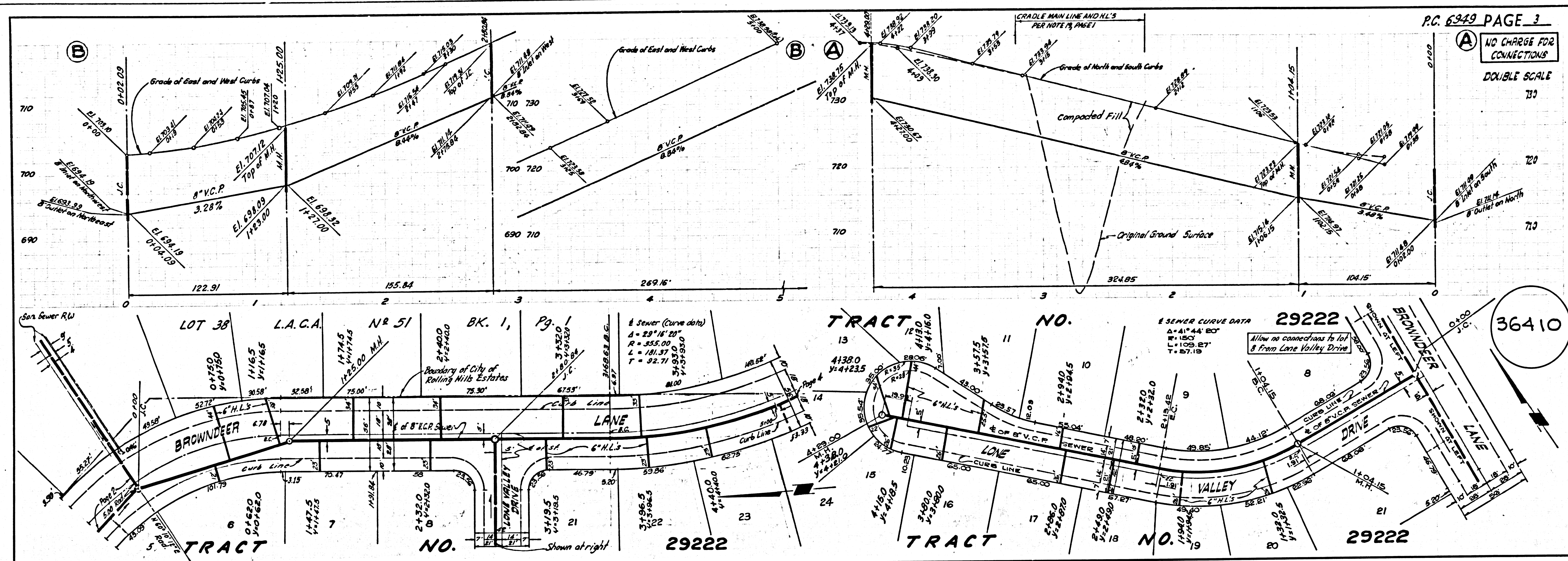
J. N. 0362.94



P. C. 6949 PAGE 2

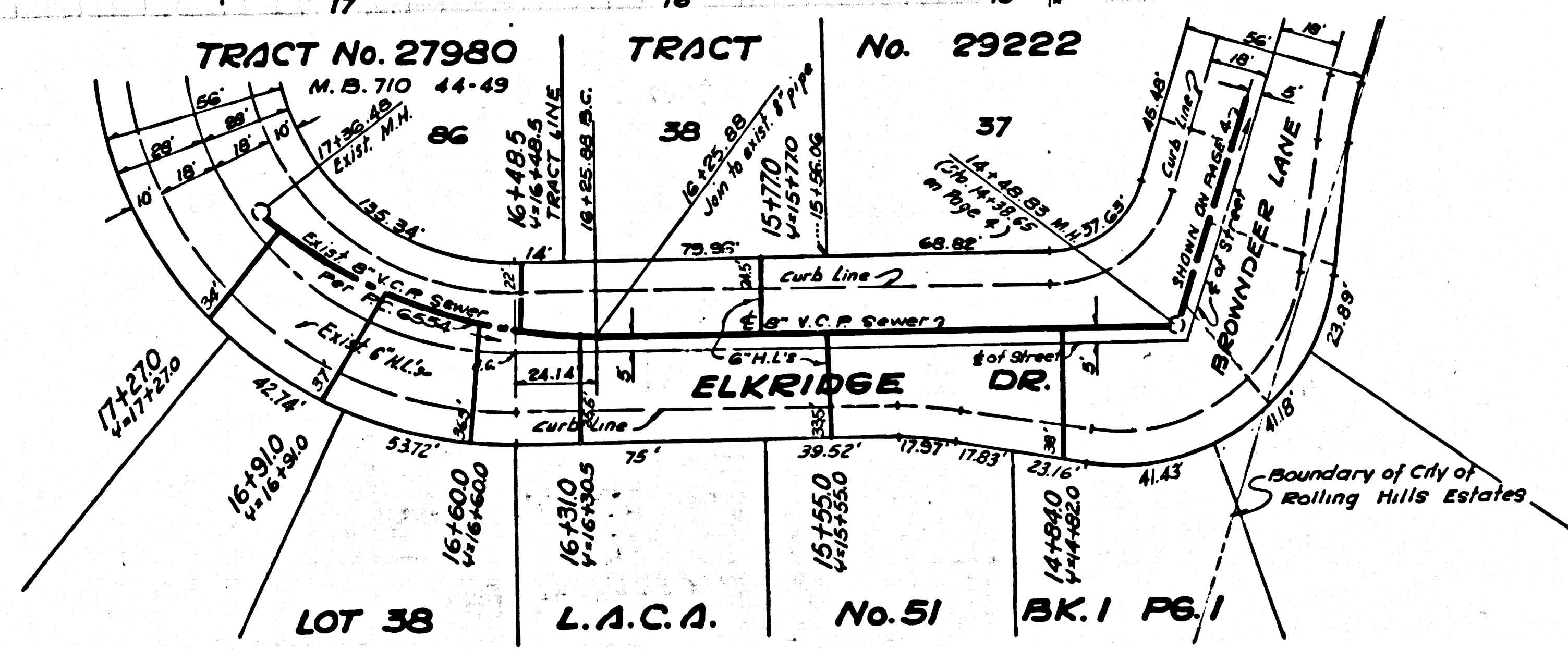
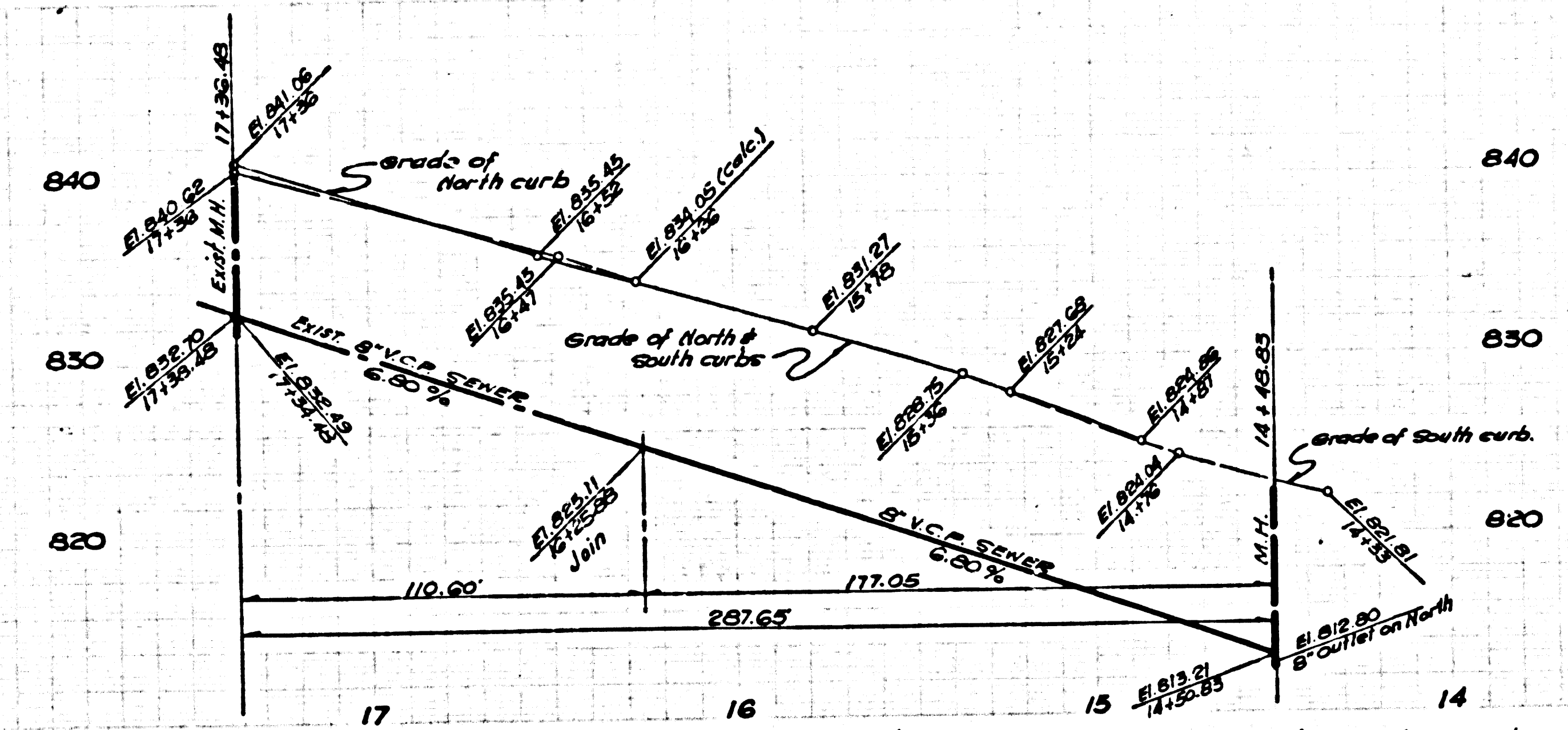
DOUBLE SCALE

36409



36410  
36411

NO CHARGE FOR CONNECTIONS  
DOUBLE SCALE



36412