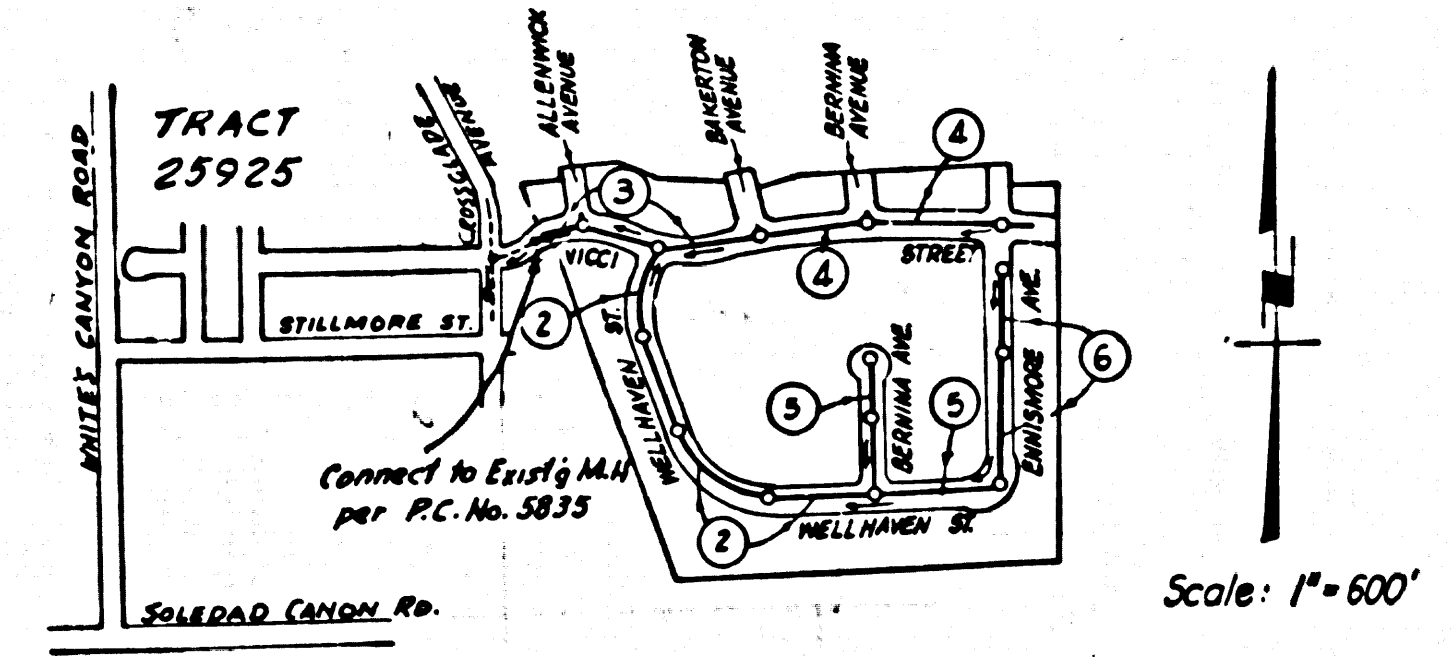


B.M. ELEV. 1344.492
 SH. U.S.G.S. Cross Disc. set in a concrete
 and stamped 0-407-1255 located 103 and 1/4 of way
 section of Camp Flerty Rd. at Salsoidal Canyon Rd.
 at the intersection of Camp Flerty Rd. to annual run
 leading to the U.S. March airport at intersection
 and to a main utility post.

REVISION #2 MAY 23, 1971
 1. Revised Grade & Alignment of
 Sewer in Vicinity of
 2. Station 5+17.48 to 5+56.0
 3. Revised Top of Main Line
 4. Enlargement of Main Line
 5. Revised Top of Manhole
 APPROVED: RCE #1197 Date 5/23/71
 REVISION #3 JUNE 11, 1971
 Revised Alignment of Main Line
 Sewer in Vicinity of
 Deleted Manhole of Station 5+48.88
 6 End. - Pg 6
 APPROVED: RCE #1433 Date 6-11-71
 OFFICE OF THE COUNTY ENGINEER

THE FOLLOWING COUNTY ENGINEER STANDARD PLANS APPLY
 TO THIS PROJECT

LEGEND	5-1
MINIMUM EXCAVATION SAFETY REQUIREMENTS	5-2
BRICK MANHOLE	5-3
MAN-REINFORCED PRECAST CONCRETE MANHOLE	5-4
MANHOLE FRAME & COVER	5-10
STANDARD MANHOLE STEP	5-17
BEDDING FOR SEWER PIPE	5-21
CRADLING & ENCREMENT	5-22
WYE OR TEE SUPPORT	5-26
ALLOWABLE TRENCH WIDTHS	5-29



INDEX MAP
 TRACT 29577
 P.C. 6955

Note:
 1. All Lines shown 8" V.C.P.
 2. Numbers in circles indicate Page Numbers.

Any connection to the sewage system of County
 Sanitation District provided directly or
 indirectly by the sewers shown on these plans,
 shall be considered a temporary connection
 until all area sewer is annexed to said
 district, at which time the connection shall
 become permanent. If for any reason the
 annexion to the district or any area sewer
 hereunder is not completed, the property not
 in the district will be required to disconnect
 unless a contract is entered into with the
 district providing for the disposal of sewage
 from the area.

DOUBLE SCALE
 NEWHALL BLDG. DIST. NO. 8.2

PROFILE ALIGNMENT AND GRADE OF P.C. 6955

SANITARY SEWERS PAGE 1

TRACT NO. 29577
 PRIVATE CONTRACT NO. 6955

SCALE: VERT. 1"=8'
 HORIZ. 1"=40'

PREPARED IN THE OFFICES OF
 Jennings Engineering Co.

APPROVED BY: R. J. Jennings
 REG. C. E. NO. 7658

FOR LEGEND SEE PLAN NO. S-1

- NOTE:
- PROVIDE STAKES ON THE PROPERTY LINE OR PROPERTY LINES PRODUCED AT RIGHT ANGLES TO THE SEWER LINE AT THE CENTER LINE OF EACH MANHOLE.
 - NO REPRESENTATIVE OF THE COUNTY ENGINEER WILL SURVEY OR LAY OUT ANY PORTION OF THE WORK.
 - THE PRIVATE ENGINEER SHALL FURNISH THE COUNTY ENGINEER WITH GRADE SHEETS AND STATIONING FOR ALL HOUSE LATERALS AND 7' BY 4' BRANCHES AND SHALL PROVIDE STAKES FOR THEM AT THESE PROPER LOCATIONS WITH STATIONING PLAINLY MARKED. ALL HOUSE LATERALS SHALL BE CONSTRUCTED IN A STRAIGHT ALIGNMENT AT RIGHT ANGLES FROM THE MAIN LINE SEWER EXCEPT AS SHOWN ON THE PLANS.
 - IF A POWER POLE IS WITHIN THREE FEET OF THE SEWER, THE SEWER SHALL BE ENCASED PER S-25, TWO FEET ON EITHER SIDE FROM THE POINT OF INTERFERENCE.
 - IF DURING THE COURSE OF CONSTRUCTION IT IS DETERMINED THAT THERE IS LESS THAN FOUR FEET OF COVER OVER THE TOP OF A MAIN LINE OR HOUSE LATERAL V.C.P. SEWER WHICH IS NOT INDICATED ON THE PLANS, THE P.C.E. SHALL BE ENCASED PER S-25, UNLESS OTHERWISE APPROVED BY THE COUNTY ENGINEER.
 - HOUSE LATERALS TO BE CONSTRUCTED WITH INVERTS AT PROPERTY LINE... FEET BELOW CURB GRADE EXCEPT AS NOTED.
 - RESURFACE ALL TRENCHES WITHIN PAVED AREAS TO MEET L.A. COUNTY ROAD DEPT. OR CALIFORNIA STATE HIGHWAY REQUIREMENTS IN ACCORDANCE WITH PERMITS.
 - SEWERS TO BE TESTED FOR LEAKAGE PER SEC. 306-2.9.7 STANDARD SPECIFICATIONS.
 - ALL STATE AND LOCAL TRENCH SAFETY ORDERS WILL BE RIGIDLY ENFORCED.
 - USE PIPE LENGTHS OF 36 FEET FOR CURVES WITH RADIUS OF LESS THAN 150 FEET.

NO CONNECTIONS FOR THE DISPOSAL OF
 INDUSTRIAL WASTES SHALL BE MADE TO
 SEWERS SHOWN ON THESE DRAWINGS
 WITHOUT WRITTEN PERMISSION FROM THE
 CHIEF ENGINEER AND GENERAL MANAGER
 OF THE COUNTY SANITATION DISTRICTS.

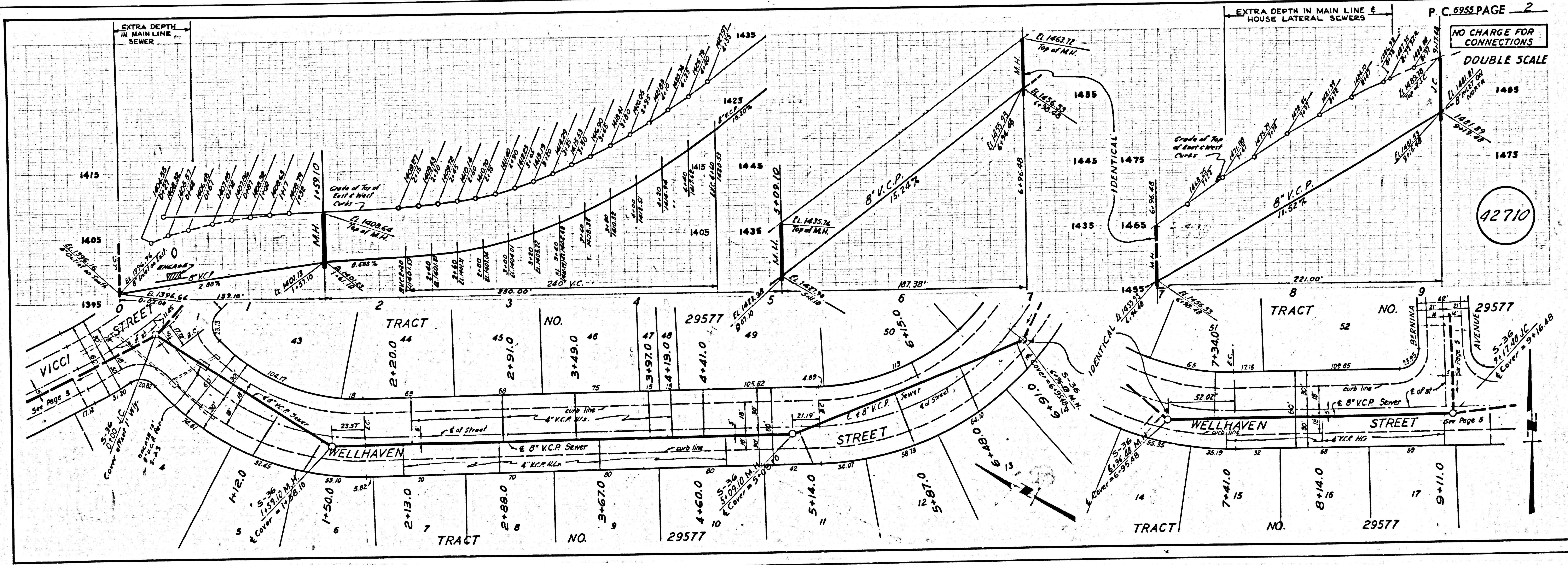
COLLECT CHARGES
 AS INDICATED

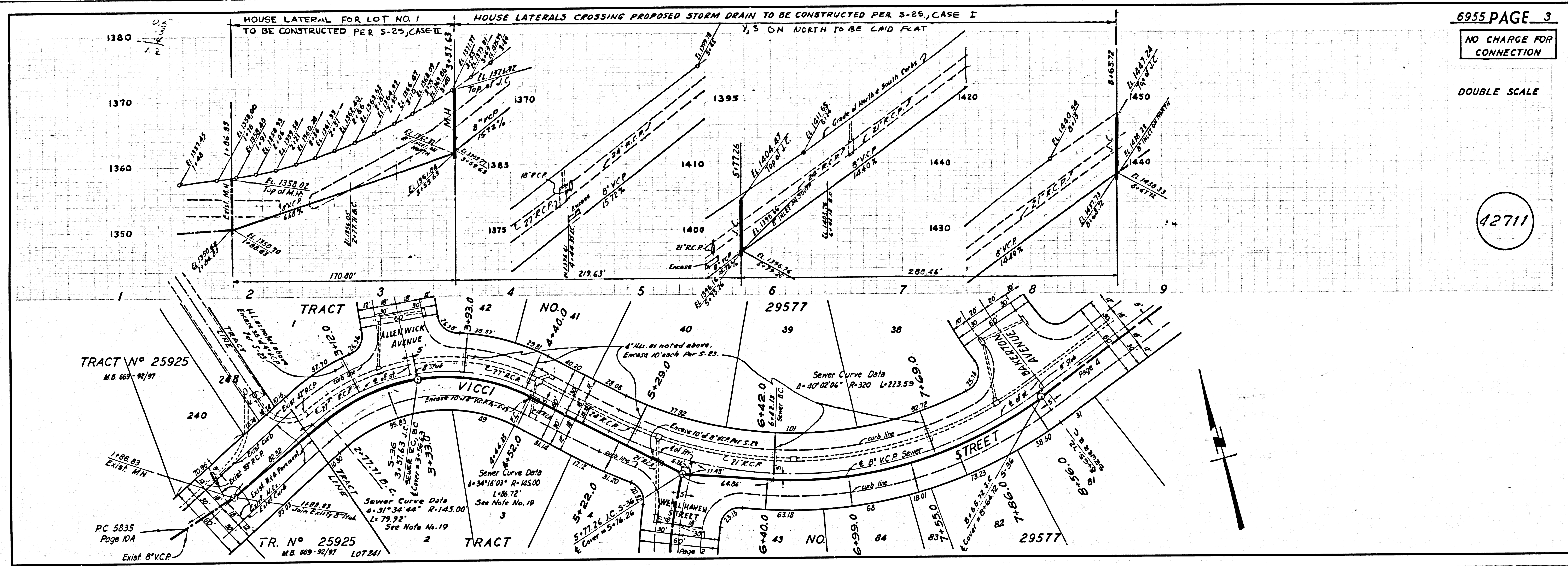
REVISION MARCH 28, 1968
 1. Revised Title Page (Page 1) to
 correspond with new Standard
 Specifications.
 2. Revised 6" H.L.s. to 4" H.L.s.

APPROVED: R. J. Jennings
 DATE 4/15/68
 P.C.E. 18906
 OFFICE OF THE COUNTY ENGINEER

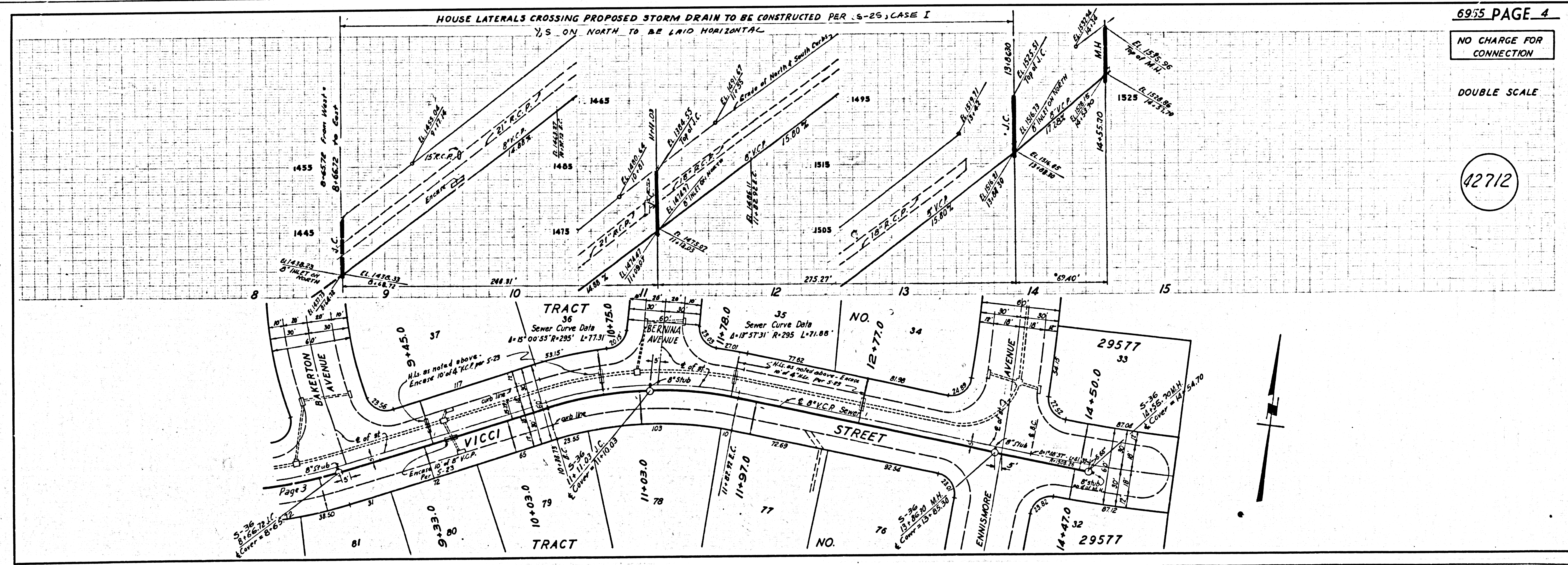
NOTE:
 GRADES TO WHICH THIS IMPROVEMENT IS TO BE CONSTRUCTED ARE SHOWN ON PLANS AND PROFILES. GRADE POINTS FOR TOP OF CURBS, CENTER LINE OF STREETS, OR CENTER LINE OF ALLEYS ARE SHOWN BY CIRCLES ON PROFILES. AT ALL POINTS BETWEEN DESIGNATED POINTS THE GRADE SHALL BE ESTABLISHED SO AS TO CONFORM TO A STRAIGHT LINE DRAWN BETWEEN SAID DESIGNATED POINTS. ELEVATIONS ARE IN FEET ABOVE U.S.C. & G.S. SEA LEVEL DATUM OF 1929.

COUNTY OF LOS ANGELES, CALIFORNIA
 JOHN A. LAMBIE, COUNTY ENGINEER
 J. D. PARKHURST, CHIEF ENGINEER
 APPROVED BY: R. J. Jennings
 ASSISTANT SANITATION ENGINEER
 APPROVED BY: J. D. Parkhurst
 CHIEF ENGINEER
 SUBMITTED BY: R. J. Jennings
 REGIONAL ENGINEER
 CHECKED BY: R. J. Jennings
 REG. C. E. NO. 7658
 J. N. 0362.96



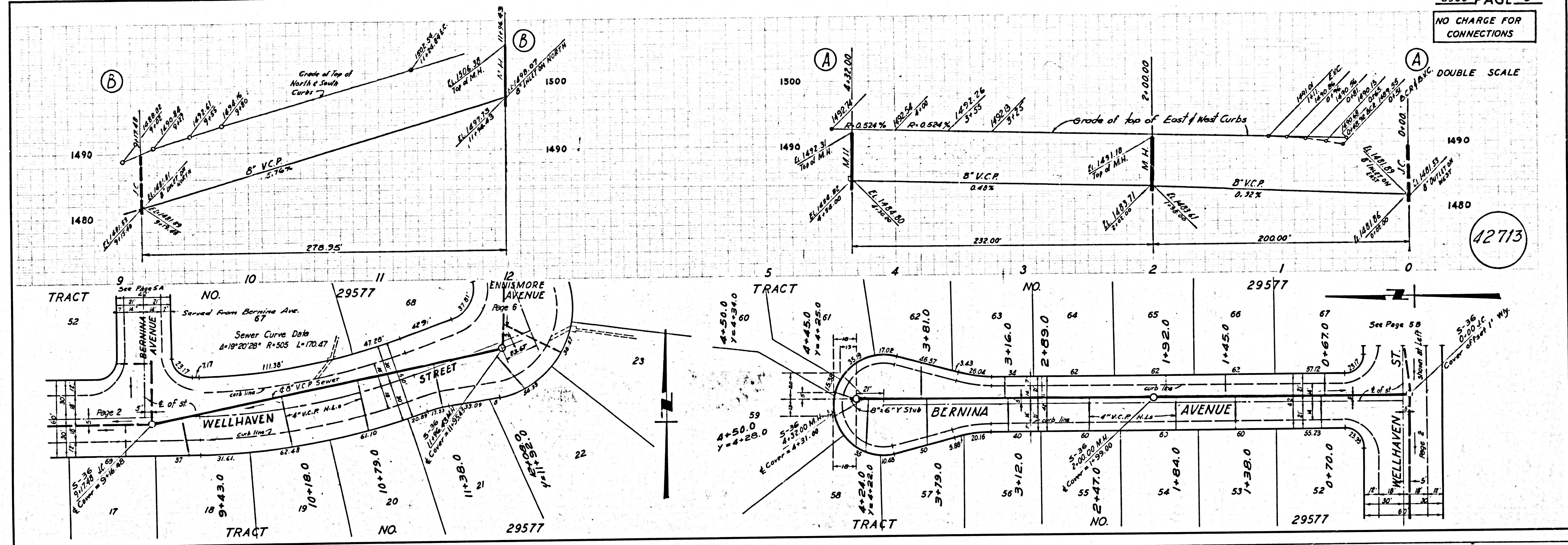


6955 PAGE 3
 NO CHARGE FOR CONNECTION
 DOUBLE SCALE



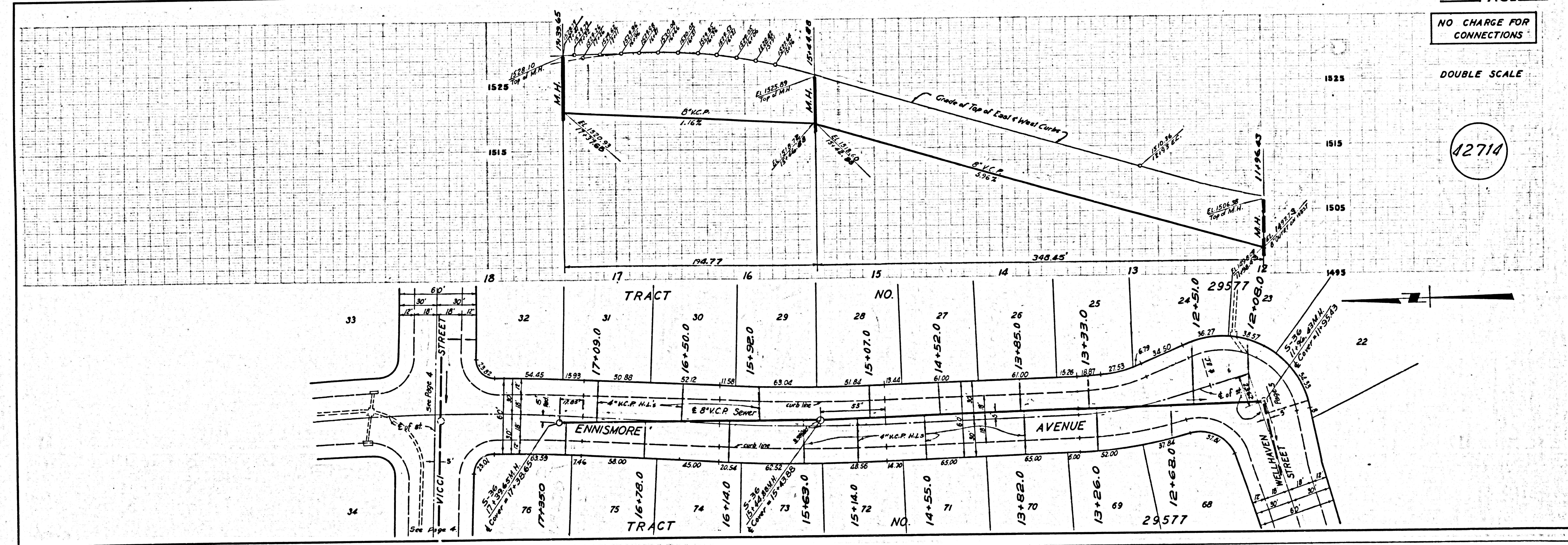
6955 PAGE 4
 NO CHARGE FOR CONNECTION
 DOUBLE SCALE

NO CHARGE FOR CONNECTIONS



12713

NO CHARGE FOR CONNECTIONS



12714