

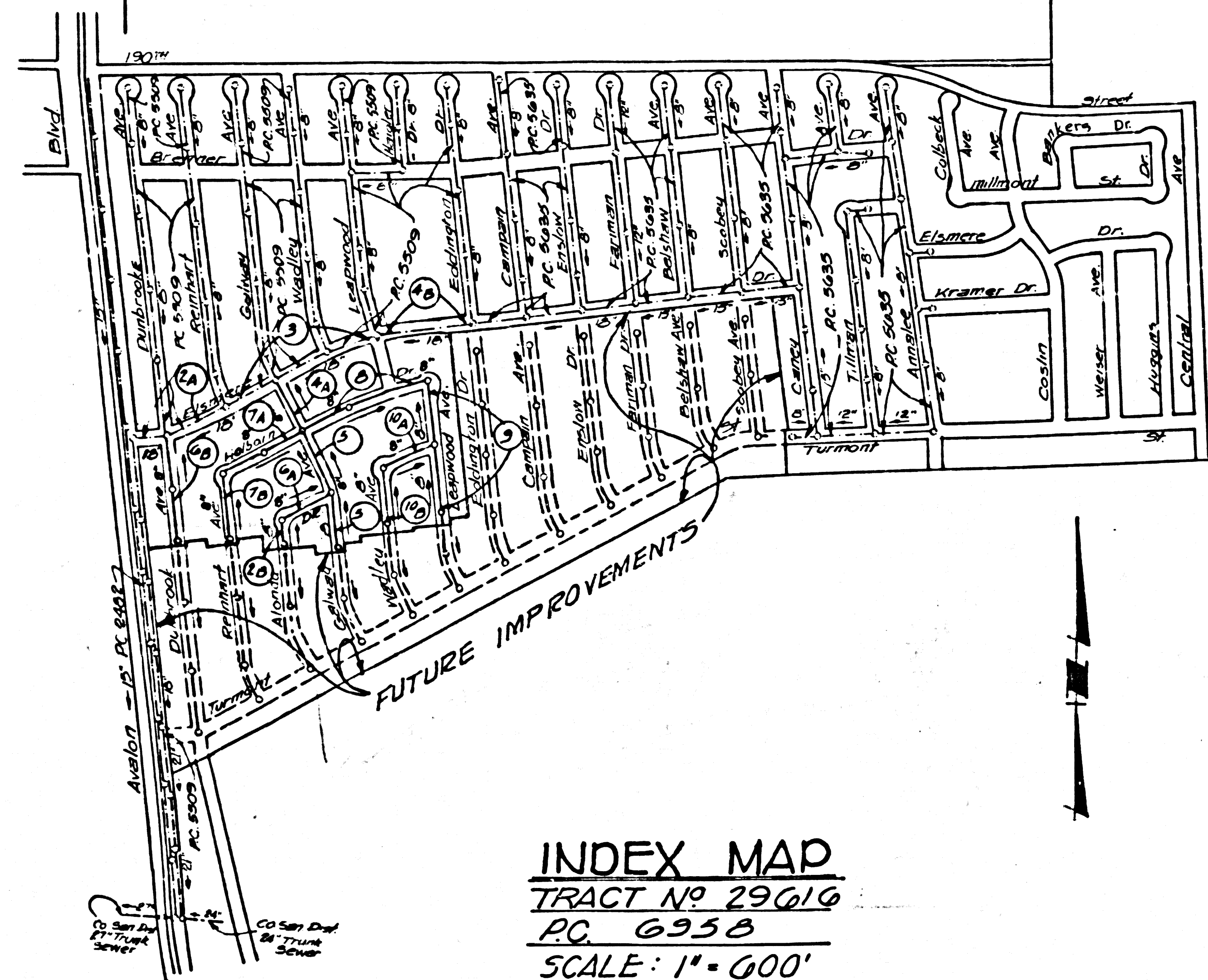
**LENNOX BLDG. DIST. NO. 7**

**TRACT No 29616**  
**PRIVATE CONTRACT NO. 6958**

W.S. 26  
 3 SHEETS, 10 PAGES  
 SCALE: VERT. 1" = 4' HORIZ. 1" = 40'  
 APRIL, 1964  
 PREPARED IN THE OFFICES OF  
**KEMMERER ENGR. CO. INC.**  
 145 NO. PAINTER AVE., WHITTIER CAL.  
 BY: *Robert R. Flores*  
 REG. C. E. NO. 11349  
 FOR LEGEND SEE PLAN NO. S-6-64

34671

B.M. 5Y 229 ELEV. 11.607  
 SPIKE IN LEAD EAST EDGE  
 PAVEMENT AVALON BOULEVARD  
 17' ± WEST CENTER TOWER  
 # 52  
 GARDENA QUAD. 19 Co. Adj.



**INDEX MAP**  
 TRACT No 29616  
 P.C. 6958  
 SCALE: 1" = 600'

**NOTE: BY PRIVATE ENGINEER.**  
 The existence and approximate location of underground utilities or structures shown on this plan were determined by a search of the available public records. To the best of our knowledge there are no existing underground utilities or structures except as shown on this plan.  
 The contractor is required to take due precautionary measures to protect the utilities or structures shown and any other utilities or structures at the site if shall be the contractor's responsibility to notify the owners of the utilities or structures concerned before starting work.

NO CONNECTIONS FOR THE DISPOSAL OF INDUSTRIAL WASTES SHALL BE MADE TO SEWERS SHOWN ON THESE DRAWINGS WITHOUT WRITTEN PERMISSION FROM THE CHIEF ENGINEER AND GENERAL MANAGER OF THE COUNTY SANITATION DISTRICTS

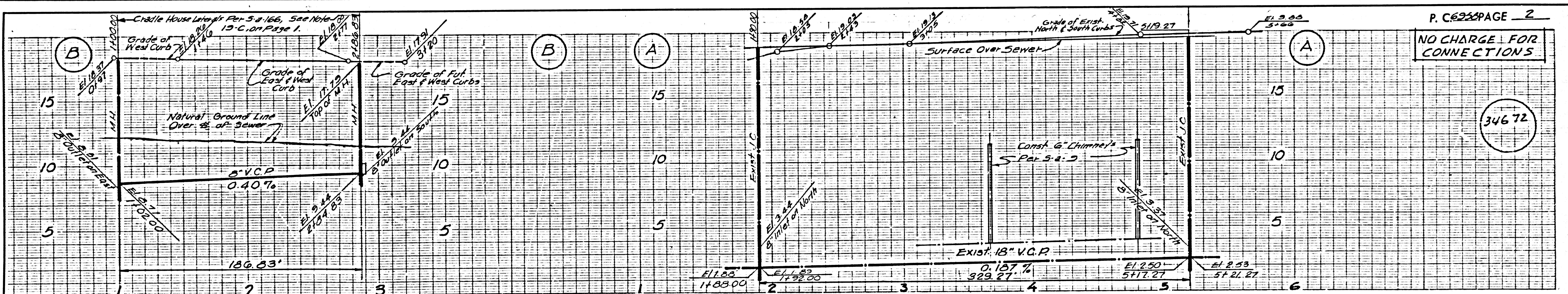
- NOTES:**
1. PROVIDE STAKES ON THE PROPERTY LINE OR PROPERTY LINES PRODUCED AT RIGHT ANGLES TO THE SEWER LINE AT THE CENTER LINE OF EACH MANHOLE.
  2. NO REPRESENTATIVE OF THE COUNTY ENGINEER WILL SURVEY OR LAY OUT ANY PORTION OF THE WORK.
  3. THE PRIVATE ENGINEER SHALL FURNISH THE COUNTY ENGINEER WITH GRADE SHEETS AND STATIONING FOR ALL HOUSE LATERALS AND Y BRANCHES AND SHALL PROVIDE STAKES FOR THEM AT THEIR PROPER LOCATIONS WITH STATIONING PLAINLY MARKED. ALL HOUSE LATERALS SHALL BE CONSTRUCTED IN A STRAIGHT ALIGNMENT AT RIGHT ANGLES FROM THE MAIN LINE SEWER EXCEPT AS SHOWN ON THE PLANS. HOUSE LATERALS FROM CHIMNEYS SHALL NOT HAVE AN ANGLE OF LESS THAN 45° WITH THE MAIN LINE SEWER. ANY CHANGE IN ALIGNMENT SHALL BE REQUESTED IN WRITING BY THE PRIVATE ENGINEER.
  4. THE PRIVATE ENGINEER SHALL FURNISH THE HOUSE LATERAL DEPTH AT THE PROPERTY LINE BELOW THE TOP OF CURB ELEVATION FOR EACH HOUSE LATERAL ON THE GRADE SHEET.
  5. NO REVISIONS SHALL BE MADE IN THESE PLANS WITHOUT THE APPROVAL OF THE COUNTY ENGINEER.
  6. THE CONTRACTOR SHALL NOTIFY THE CONSTRUCTION DIVISION BY TELEPHONE, MADISON 9-4747, EXT. 81551, AT LEAST TWENTY-FOUR HOURS BEFORE STARTING ANY WORK UNDER THIS CONTRACT.
  7. MANHOLES SHALL BE BRICK SEWER STRUCTURES PER S-104. PRECAST CONCRETE MANHOLES PER S-125 OR S-173 MAY BE USED AS AN ALTERNATE IN LOCATIONS APPROVED BY THE COUNTY ENGINEER.
  8. USE STANDARD MANHOLE FRAMES AND COVERS, S-117, EXCEPT AS NOTED.
  9. MANHOLE DEPTHS IN UNIMPROVED AREAS SHALL BE 32" INCHES ABOVE FINISHED GRADE.
  10. USE EXTRA STRENGTH PIPE, ALL PIPE IS STANDARD DEPTH EXCEPT AS NOTED.
  11. USE MECHANICAL COMPRESSION JOINTS FOR ALL V.C.P. JOINTS PER SPECS. SECS. 34, 48, 49.
  12. WHERE EVER GROUND WATER IS ENCOUNTERED DURING THE CONSTRUCTION OF THE SEWERS, THE V.C.P. JOINTS SHALL BE OF JOINT COMPOUND PER SPECS., SECS. 33 & 48, OR MECHANICAL COMPRESSION JOINTS PER SPECS., SEC. 34.
  13. IF A POWER POLE IS WITHIN THREE FEET OF THE SEWER, THE SEWER SHALL BE ENCASED, PER S-172, CASE III, TWO FEET ON EITHER SIDE FROM THE POINT OF INTERFERENCE.
  14. IF DURING THE COURSE OF CONSTRUCTION IT IS DETERMINED THAT THERE IS LESS THAN FOUR FEET OF COVER OVER THE TOP OF A MAIN LINE OR HOUSE LATERAL V.C.P. SEWER WHICH IS NOT INDICATED ON THE PLANS, THE PIPE SHALL BE INCASED PER S-172, CASE III, UNLESS OTHERWISE APPROVED BY THE COUNTY ENGINEER.
  15. HOUSE LATERALS TO BE CONSTRUCTED WITH INVERTS AT PROPERTY LINE... FEET BELOW CURB GRADE EXCEPT AS NOTED.
  16. RESURFACE ALL TRENCHES WITHIN PAVED AREAS TO MEET L.A. COUNTY ROAD DEPT. OR CALIFORNIA STATE HIGHWAY REQUIREMENTS IN ACCORDANCE WITH PERMITS.
  17. FOR ALLOWABLE LEAKAGE TEST USE FORMULA NO. 2, SPECS., SEC. 54.
  18. ALL STATE AND LOCAL TRENCH SAFETY ORDERS WILL BE RIGIDLY ENFORCED.
  19. CONSTRUCTION IN FILLED AREAS:
    - (a) AN ACCEPTABLE CERTIFICATION OF COMPACTION TEST RESULTS SHALL BE SUBMITTED TO THE CONSTRUCTION DIVISION. COMPACTION TESTS ARE TO BE MADE IN ACCORDANCE WITH A.S.T.M. Std. Method of Test D-630-42T.
    - (b) NO CONSTRUCTION IS PERMITTED IN FILLED AREAS WHERE THE RELATIVE DENSITY OF COMPACTION IS LESS THAN 80%.
    - (c) IF THE RELATIVE DENSITY OF COMPACTION IS LESS THAN 80%, ALL MAIN LINE AND HOUSE LATERALS SHALL BE CONSTRUCTED PER S-104 OR HAVE A SPECIAL BASE COURSE PER S-125, CASE III. SPECIAL MANHOLE BASES PER S-123 ARE REQUIRED.
    - (d) IF THE RELATIVE DENSITY OF COMPACTION IS 80% OR GREATER, THE SPECIAL PROVISIONS IN (C) ARE NOT REQUIRED.

**COLLECT CHARGES AS INDICATED**  
*William Scott*

**NOTE:**  
 GRADES TO WHICH THIS IMPROVEMENT IS TO BE CONSTRUCTED ARE SHOWN ON PLANS AND PROFILES. GRADE POINTS FOR TOP OF CURBS, CENTER LINE OF STREETS, OR CENTER LINE OF ALLEYS ARE SHOWN BY CIRCLES ON PROFILES. AT ALL POINTS BETWEEN DESIGNATED POINTS THE GRADE SHALL BE ESTABLISHED SO AS TO CONFORM TO A STRAIGHT LINE DRAWN BETWEEN SAID DESIGNATED POINTS.  
 BEFORE WORK CAN BE STARTED, THE CONTRACTOR MUST OBTAIN A PERMIT TO LOCATE IN COUNTY STREETS FROM THE L.A. COUNTY ROAD DEPT., DISTRICT OFFICE NO. 13, AND PAY A FEE TO THE COUNTY ENGINEER, ROOM 330, COUNTY ENGINEERING BUILDING, 100 WEST SECOND STREET OR RALPH B. HERGENROTTER, REGIONAL OFFICE, SUFFICIENT TO COVER THE COST OF CONSTRUCTION INSPECTION AND RECORD PLANS.  
 APPROVAL OF THIS PLAN BY THE COUNTY OF LOS ANGELES DOES NOT CONSTITUTE A REPRESENTATION AS TO THE ACCURACY OF THE LOCATION OR OF THE EXISTENCE OR NON-EXISTENCE OF ANY UNDERGROUND UTILITY PIPE, OR STRUCTURE WITHIN THE LIMITS OF THIS PROJECT. THIS NOTE APPLIES TO ALL PAGES.  
 IF WORK IS TO BE DONE IN A STATE HIGHWAY, A PERMIT MUST BE OBTAINED FROM THE STATE OF CALIFORNIA, DIVISION OF HIGHWAYS, 100 SOUTH SPRING STREET, LOS ANGELES, CALIFORNIA.

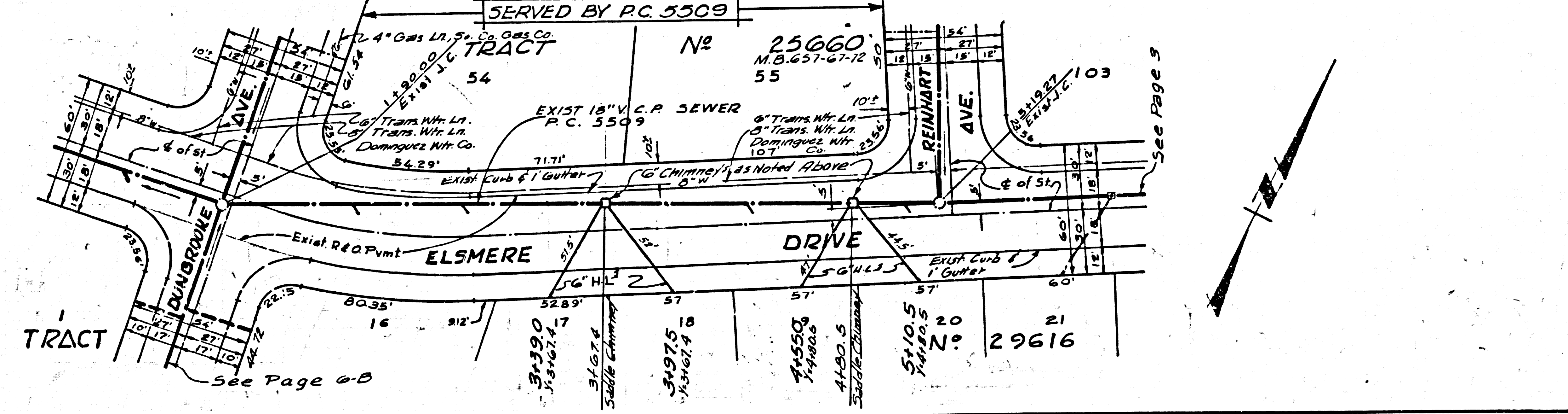
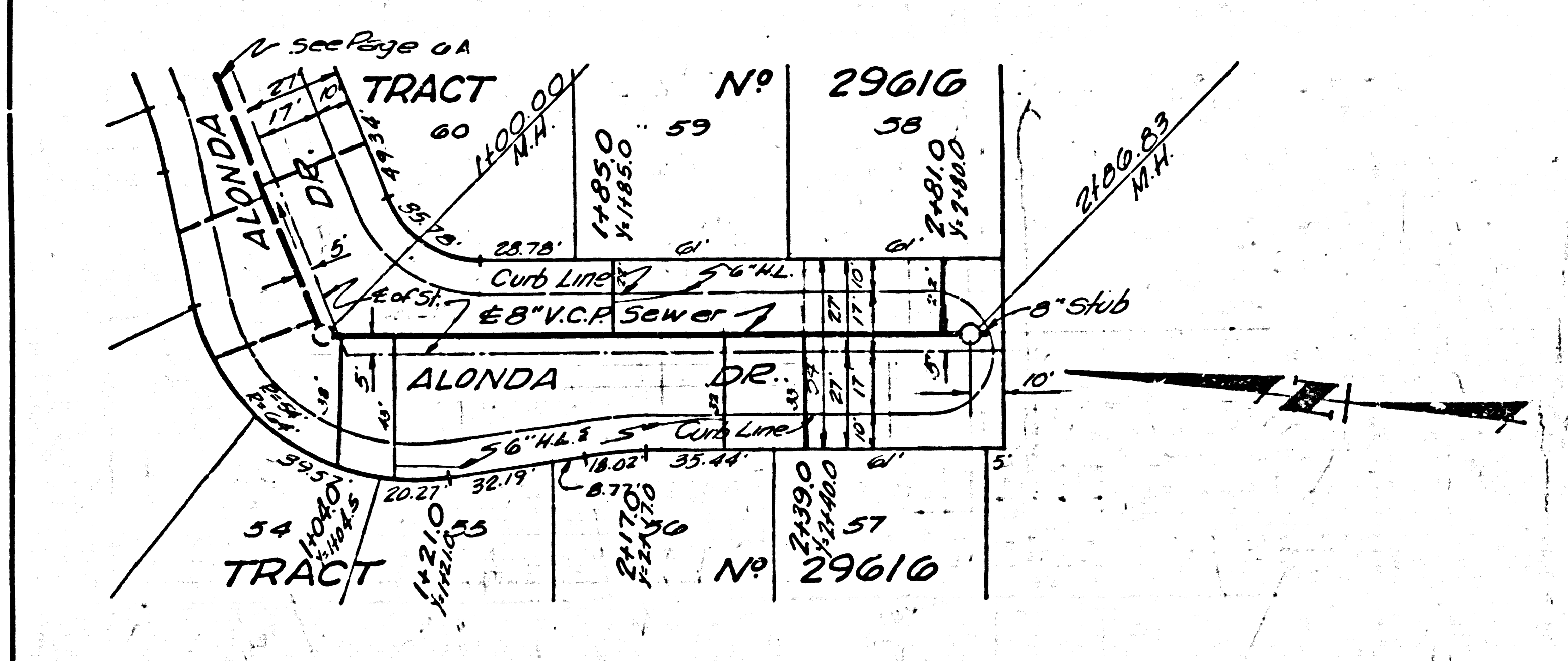
**COUNTY OF LOS ANGELES, CALIFORNIA**  
 JOHN A. LAMBE, COUNTY ENGINEER  
 J. D. PARKHURST, CHIEF ENGINEER  
 CO. SAN. DIST. NO. 7  
 APPROVED BY: *John A. Lambe* ASSISTANT SANITATION ENGINEER  
 APPROVED BY: *J. D. Parkhurst* OFFICE ENGINEER  
 SUBMITTED BY: *Jack C. Ausim* REGIONAL ENGINEER  
 CHECKED BY: *Ralph B. Hergenrotter* REG. C. E. NO. 12508

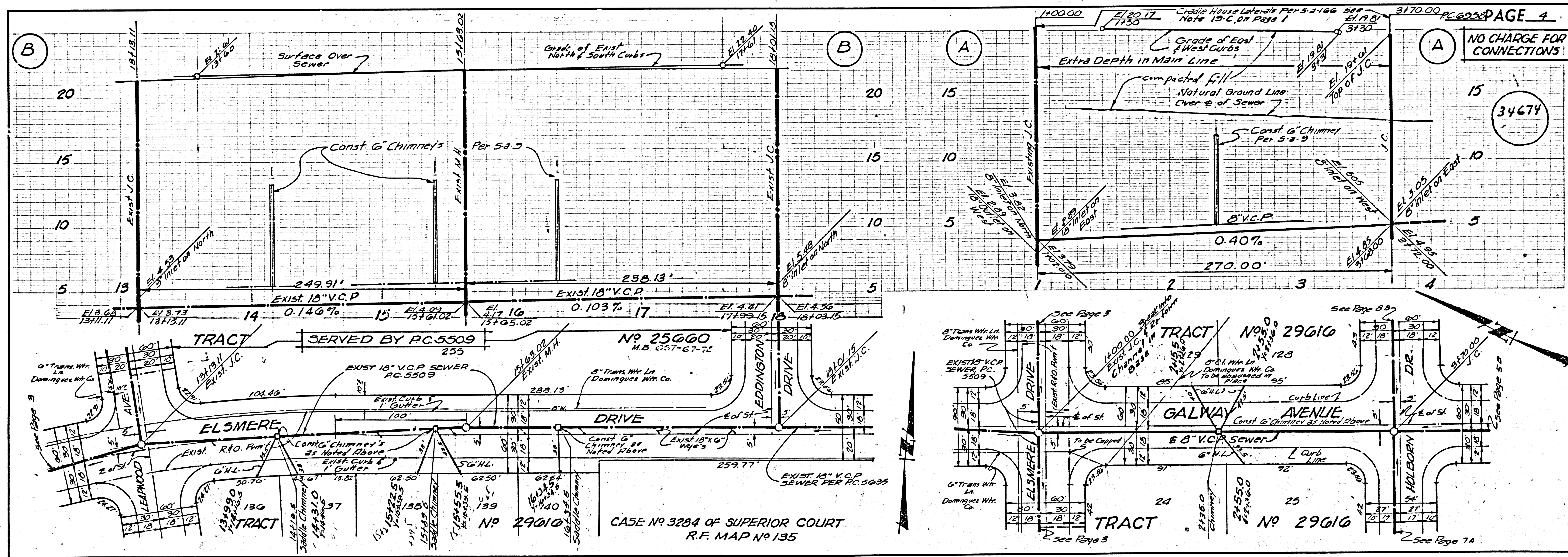
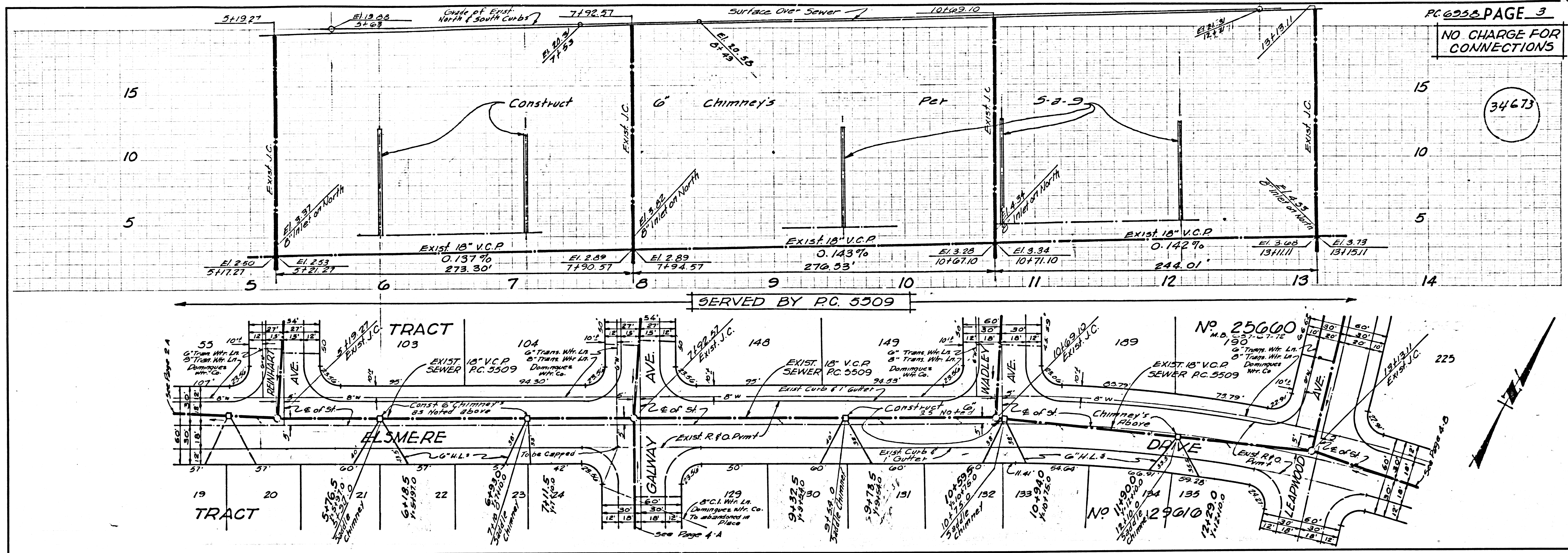
J.N. 0362.97

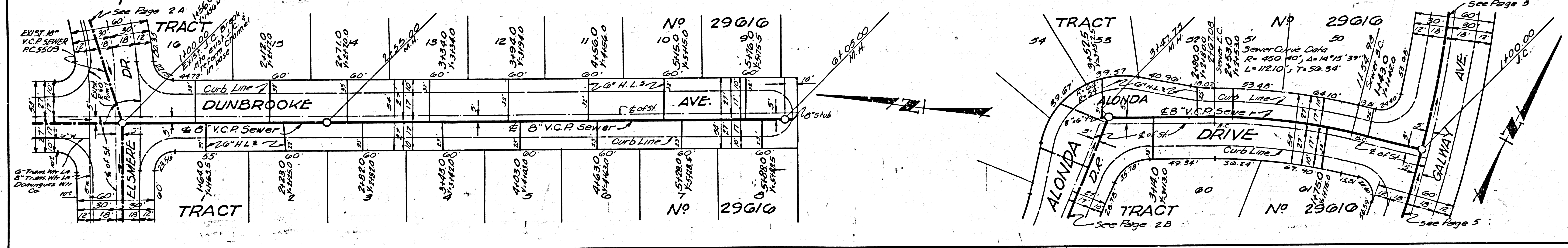
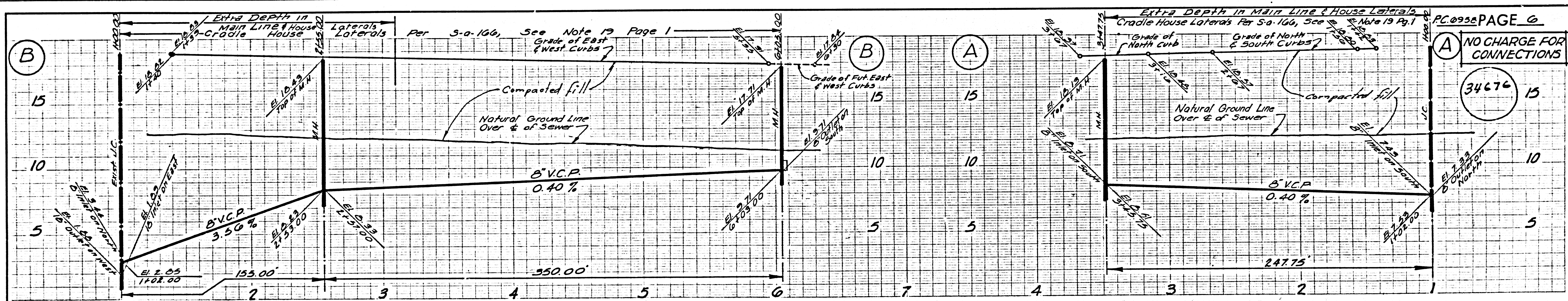
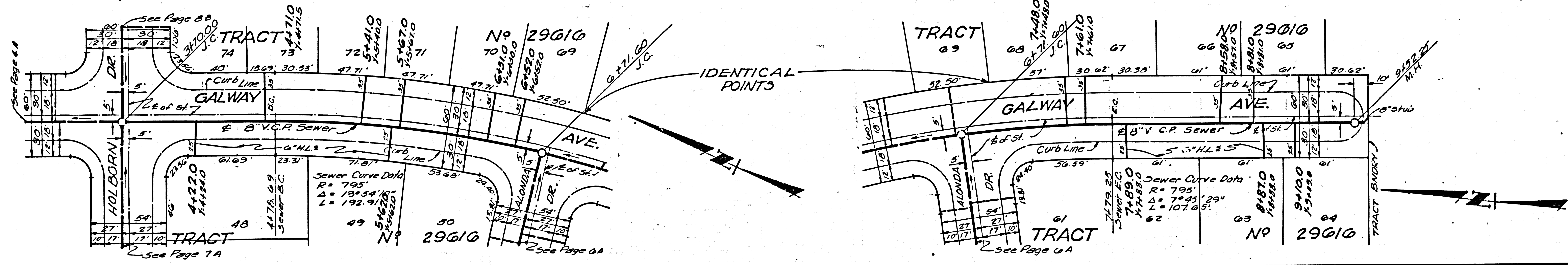
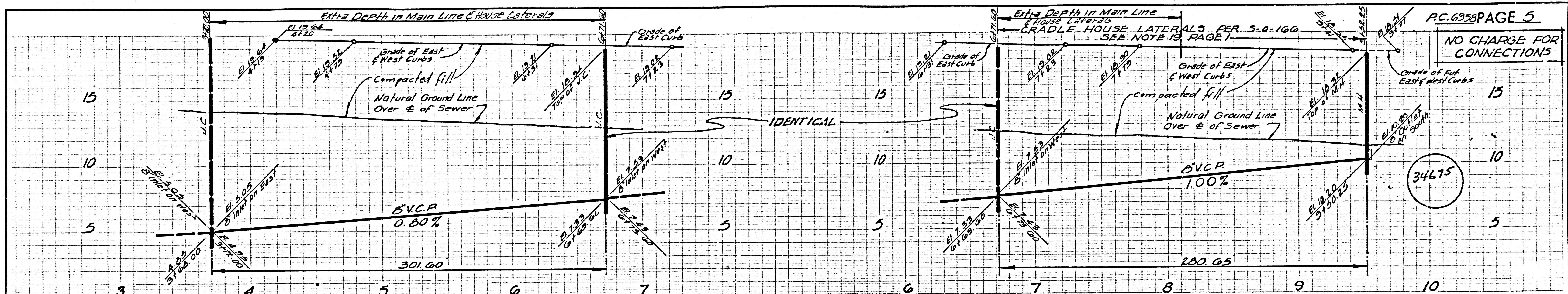


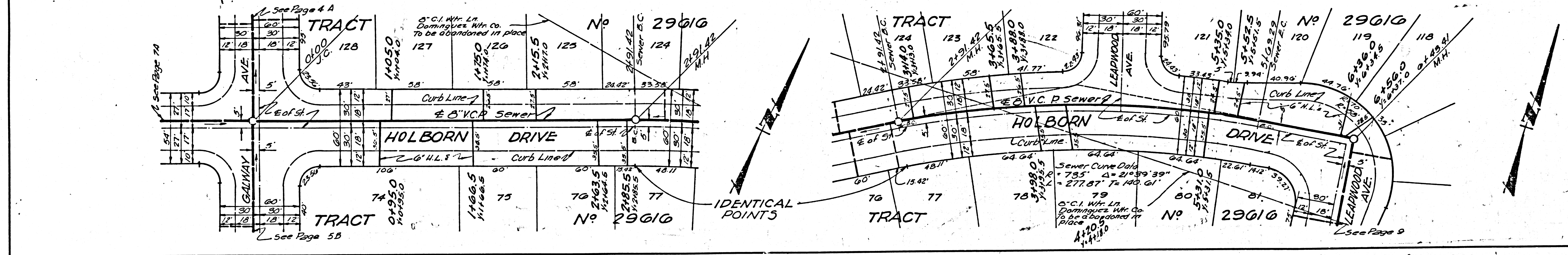
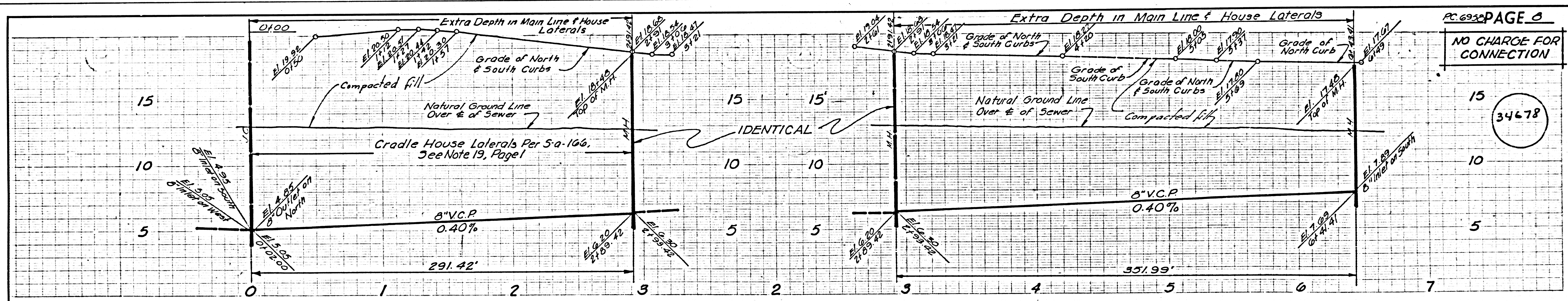
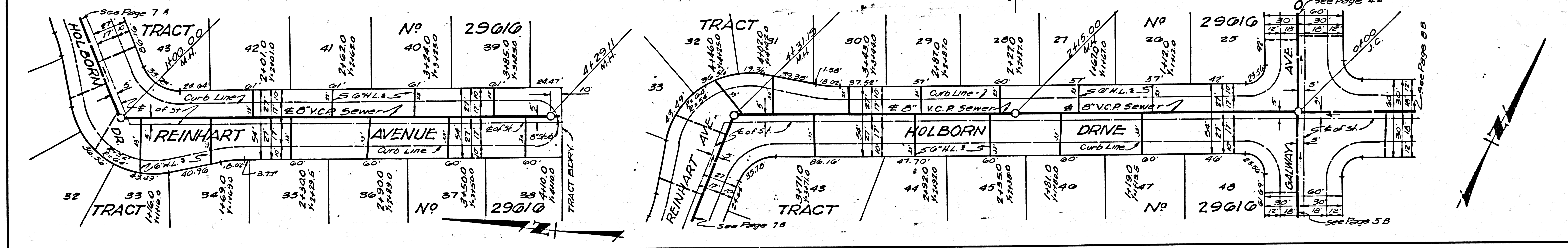
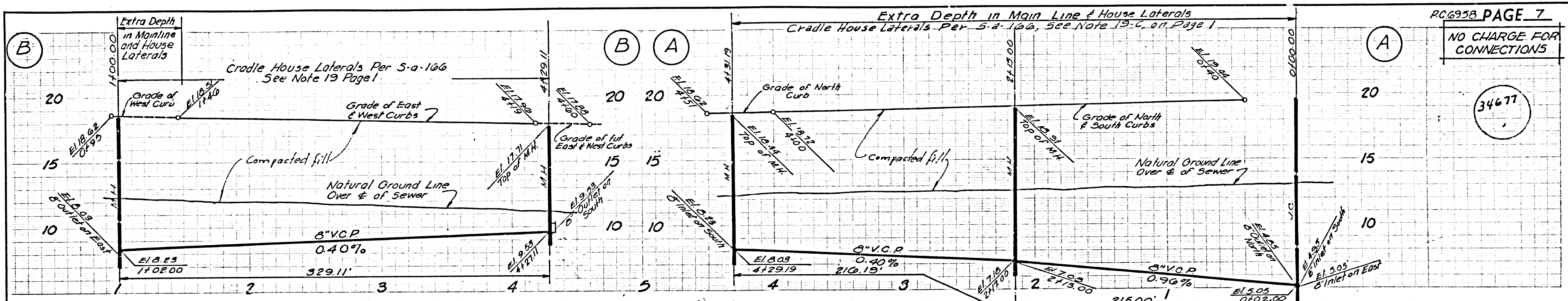
**NO CHARGE FOR CONNECTIONS**

34672









NO CHARGE FOR CONNECTIONS

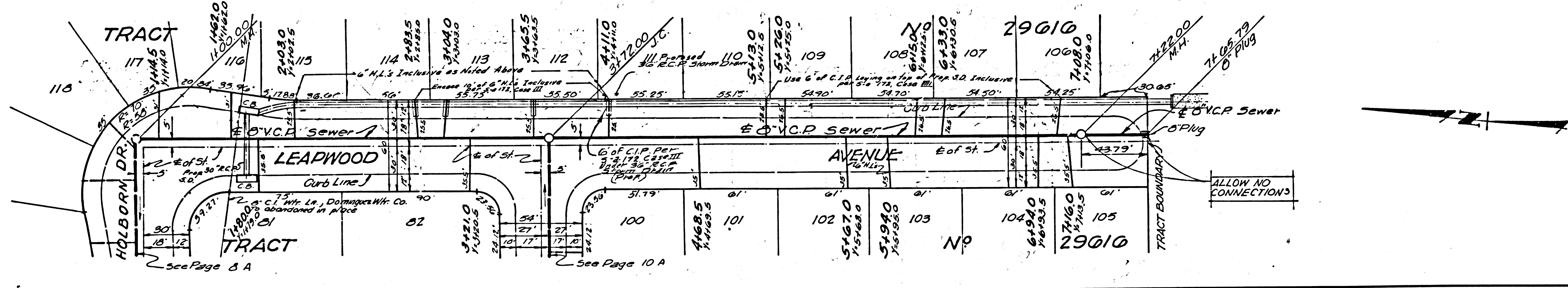
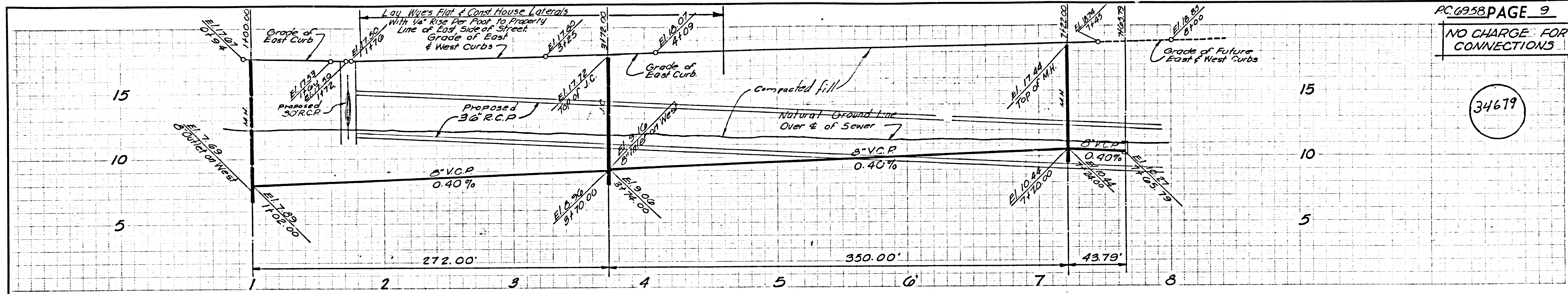
34677

NO CHARGE FOR CONNECTIONS

34678

NO CHARGE FOR CONNECTIONS

34679



NO CHARGE FOR CONNECTIONS

34680

