

DOUBLE SCALE
WHITTIER BLDG. DIST. NO. 11

PROFILE ALIGNMENT AND GRADE OF
SANITARY SEWERS PAGE 1
CONSTRUCTED IN

TRACT No. 28693
PRIVATE CONTRACT NO. 6964

W.S. 38
8 SHEETS, 8 PAGES
SCALE: VERT. 1"=8'
HORIZ. 1"=40'

APRIL, 1964
PREPARED IN THE OFFICES OF
ERVIN ENGINEERING
920 N. CHAMPAGNE BLVD., LOS ANGELES, CALIFORNIA
By: Fred J. Ervin
REG. C. E. NO. 11872

FOR LEGEND SEE PLAN NO. S-64

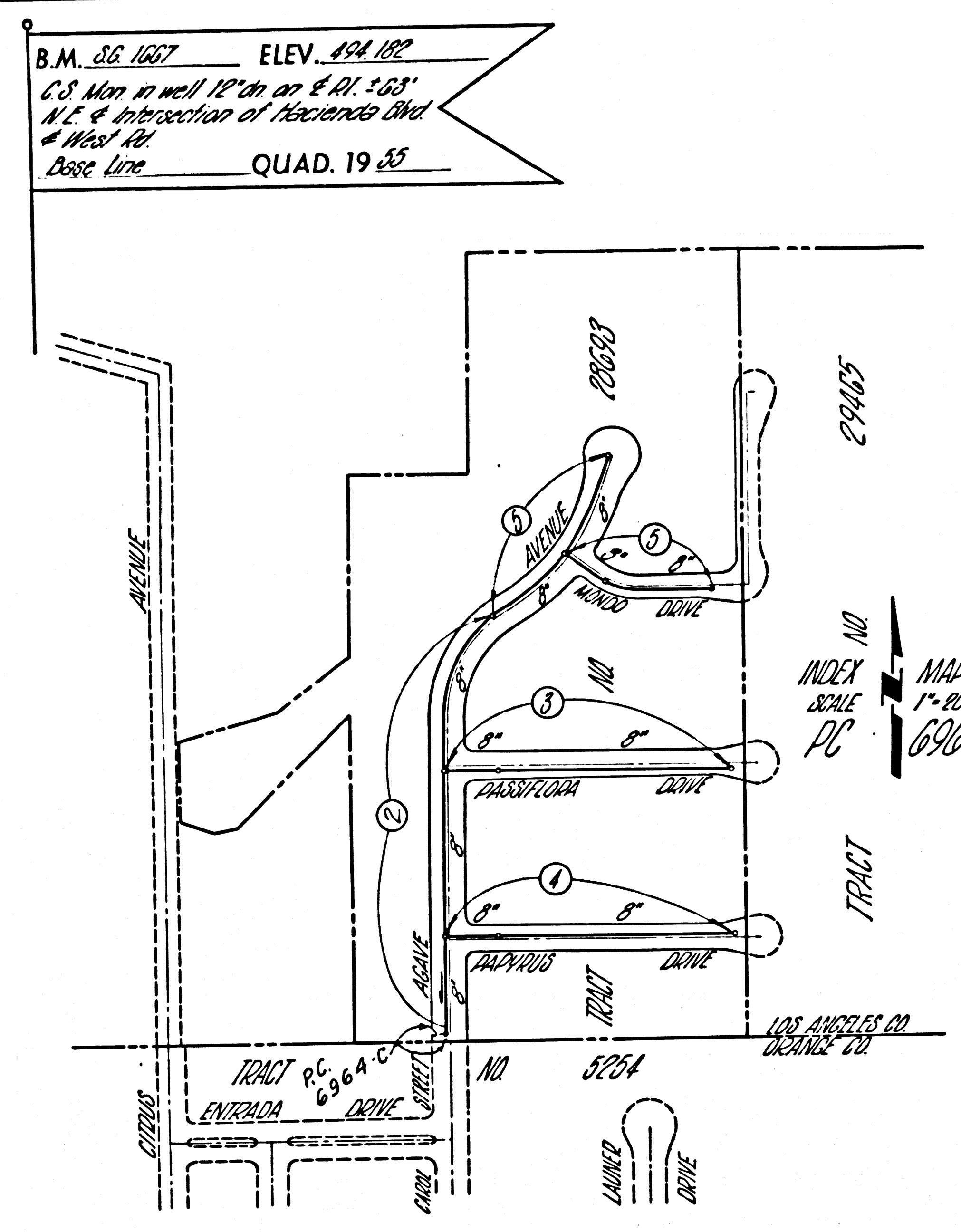
NOTE:
GRADES TO WHICH THIS IMPROVEMENT IS TO BE CONSTRUCTED ARE SHOWN ON PLANS AND PROFILES. GRADE POINTS FOR TOP OF CURBS, CENTER LINE OF STREETS, OR CENTER LINE OF ALLEYS ARE SHOWN BY CIRCLES ON PROFILES. AT ALL POINTS BETWEEN DESIGNATED POINTS THE GRADE SHALL BE ESTABLISHED SO AS TO CONFORM TO A STRAIGHT LINE DRAWN BETWEEN SAID DESIGNATED POINTS. ELEVATIONS ARE IN FEET ABOVE U.S.C. & G.S. MEAN LEVEL DATUM OF 1929.
THIS DRAWING AND THE DATA HEREON ARE HEREBY MADE A PART OF THE SPECIFICATIONS. WORK SHALL BE CONSTRUCTED ACCORDING TO STANDARD SPECIFICATIONS DATED MAY 23, 1962, ON FILE IN THE OFFICE OF THE COUNTY ENGINEER AND SHALL BE PRODUCED ONLY IN THE PRESENCE OF THE COUNTY ENGINEER.
APPROVAL OF THIS PLAN BY THE COUNTY OF LOS ANGELES DOES NOT CONSTITUTE A REPRESENTATION AS TO THE ACCURACY OF THE LOCATION OF OR THE EXISTENCE OR NON-EXISTENCE OF ANY UNDERGROUND UTILITY PIPE, OR STRUCTURE WITHIN THE LIMITS OF THE PROJECT. THIS NOTE APPLIES TO ALL PAGES.
IF WORK IS TO BE DONE IN A STATE HIGHWAY, A PERMIT MUST BE OBTAINED FROM THE STATE OF CALIFORNIA, DIVISION OF HIGHWAYS, 120 SOUTH BRINK STREET, LOS ANGELES, CALIFORNIA.

COUNTY OF LOS ANGELES, CALIFORNIA
JOHN A. LAMBIE, COUNTY ENGINEER

APPROVED BY: *[Signature]*
ASSISTANT SANITATION ENGINEER
SUBMITTED BY: *[Signature]*
425 62670 REGIONAL ENGINEER REG. C.E. 81271
CHECKED BY: *[Signature]*
REG. C.E. NO. 11812

36529

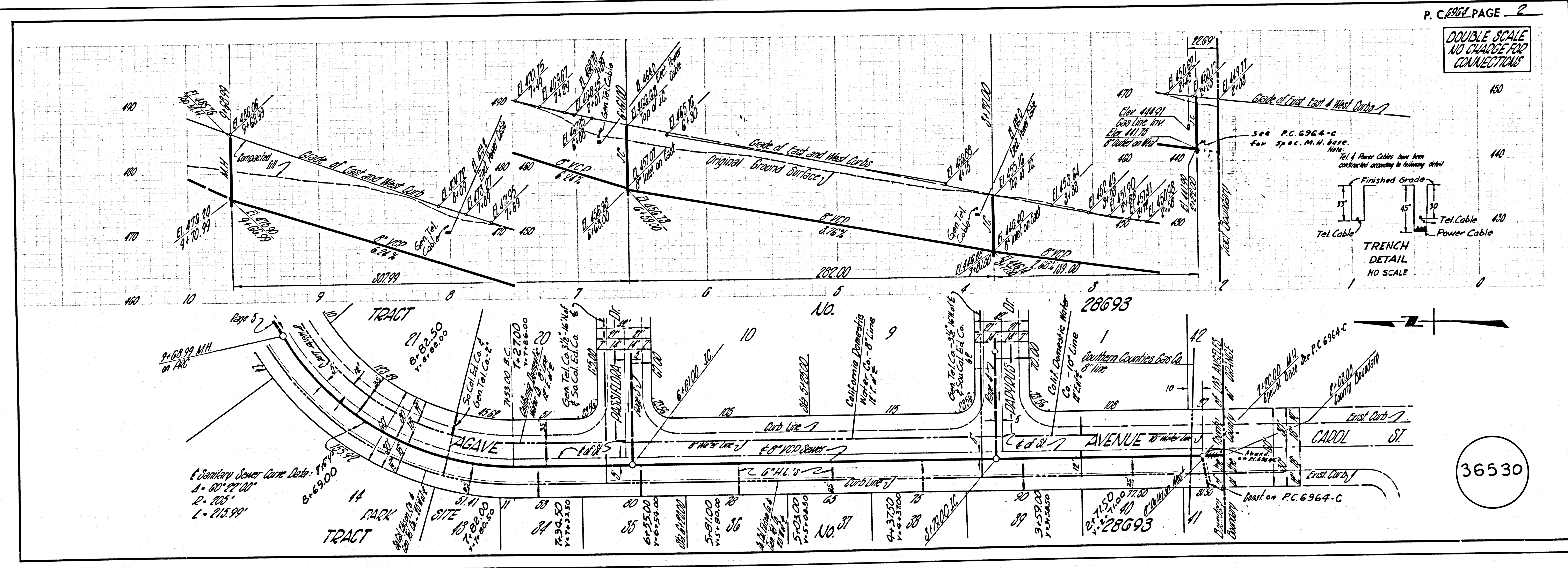
J.N. 0303.02



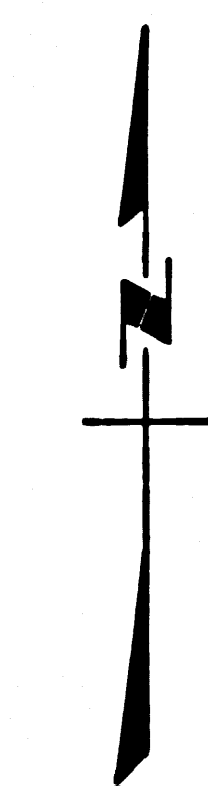
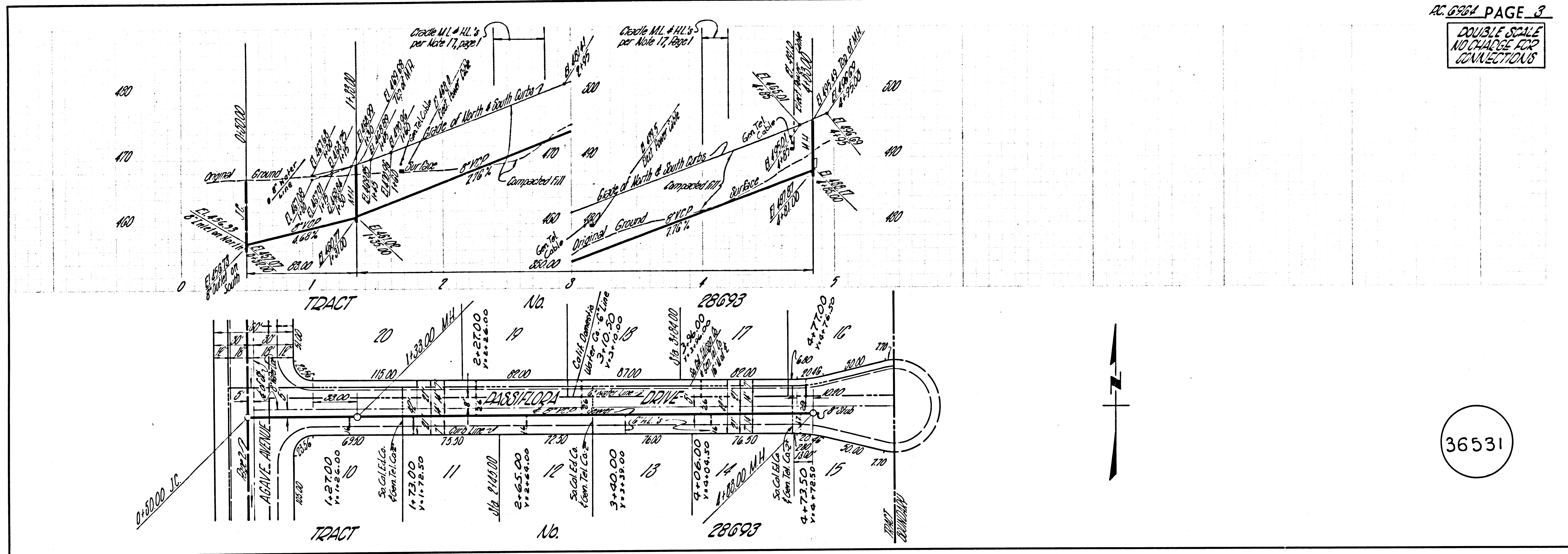
REVISION
Special base on M.I. at Sta. 2100.00
Page 1, Detail page 2.
Added 2' of clearance above
to lot #1.
Approved: *[Signature]*
Office of County Engineer
Date: 12-30-64

PRIVATE ENGINEER'S
NOTICE TO CONTRACTOR
THE EXISTENCE AND LOCATION OF ANY UNDERGROUND UTILITY PIPES OR STRUCTURES SHOWN ON THESE PLANS ARE OBTAINED BY A SEARCH OF THE AVAILABLE RECORDS TO THE BEST OF OUR KNOWLEDGE THERE ARE NO EXISTING UTILITIES EXCEPT AS SHOWN ON THIS MAP. THE CONTRACTOR IS REQUIRED TO TAKE PRECAUTIONARY MEASURES TO PROTECT THE UTILITY LINES SHOWN AND ANY OTHER LINES NOT OF RECORD OR NOT SHOWN ON THIS DRAWING.

COLLECT CHARGES
AS INDICATED
[Signature]

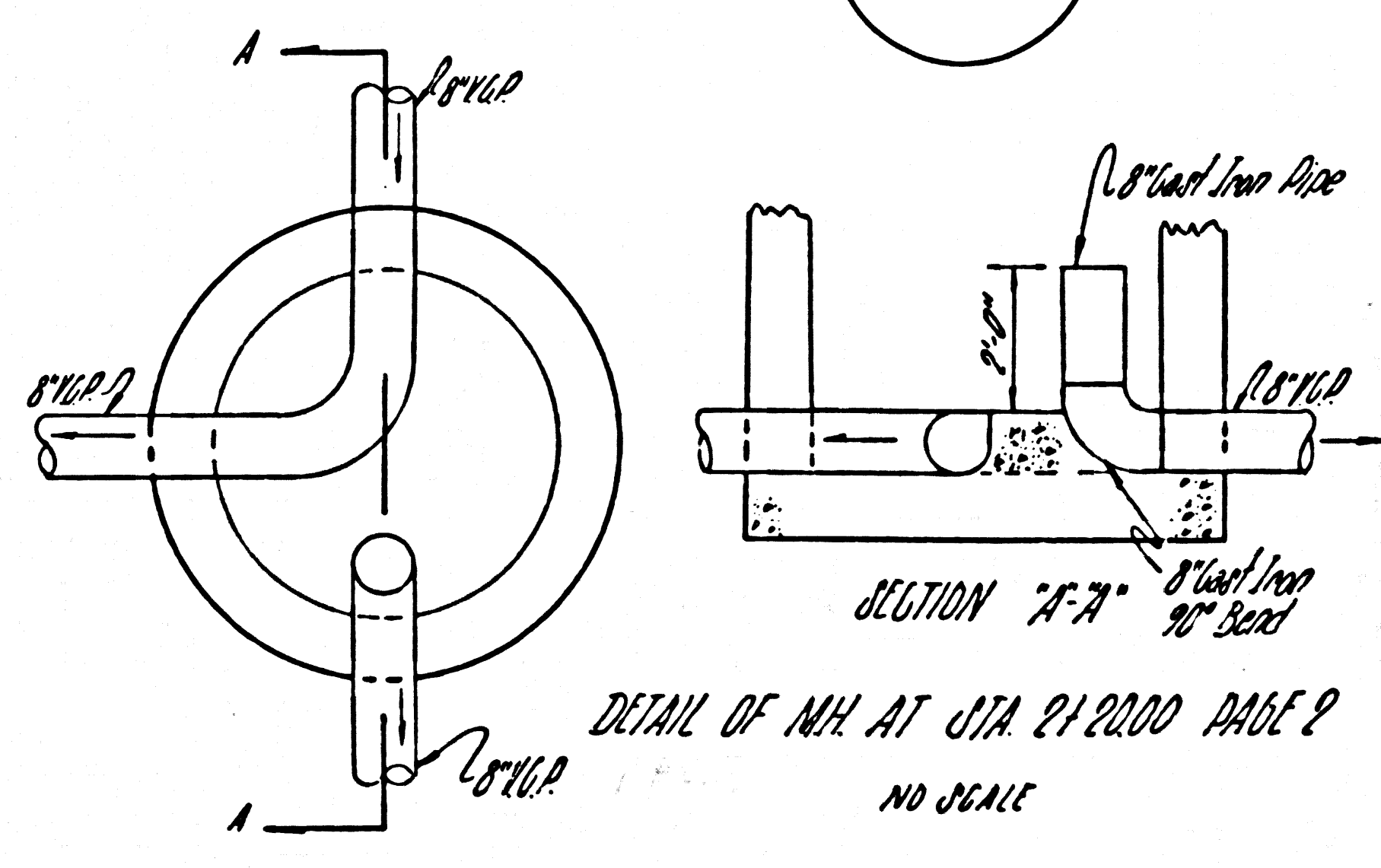
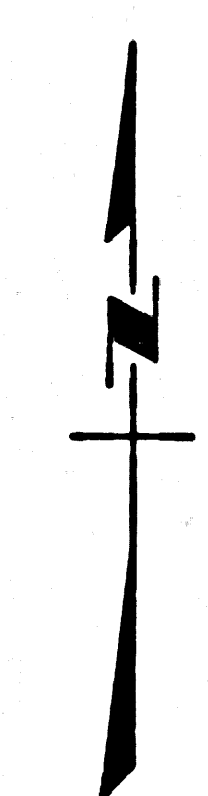
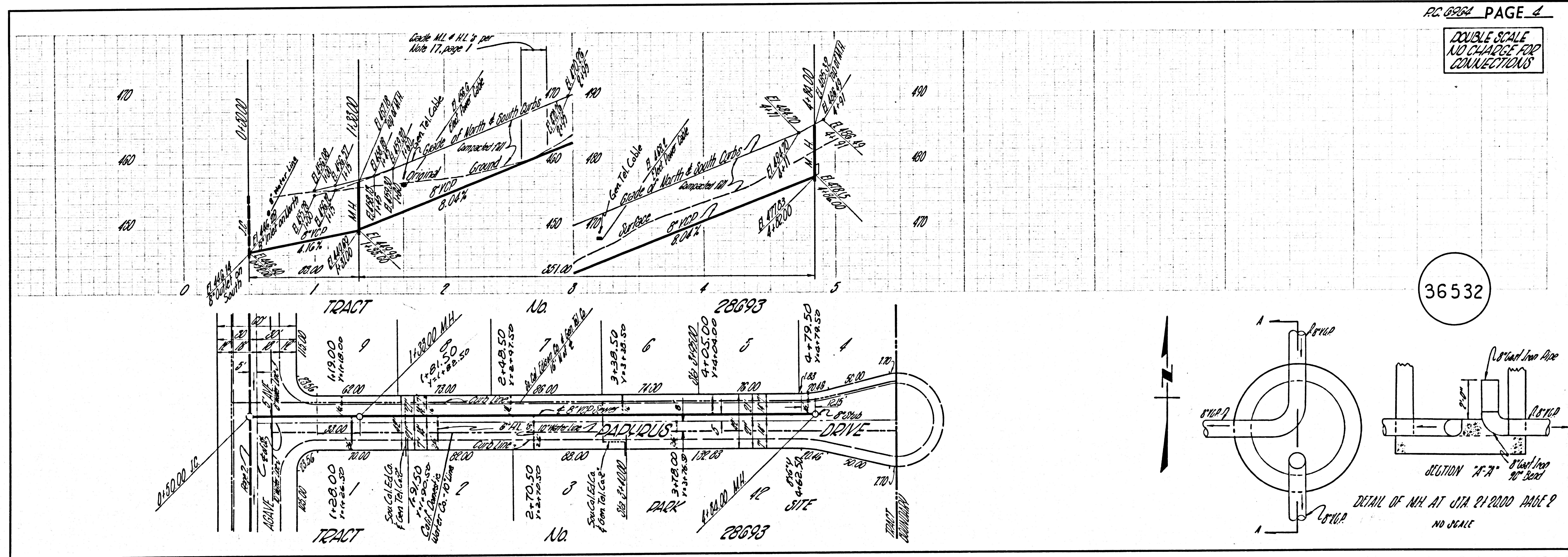


DOUBLE SCALE
NO CHARGE FOR
CONNECTIONS



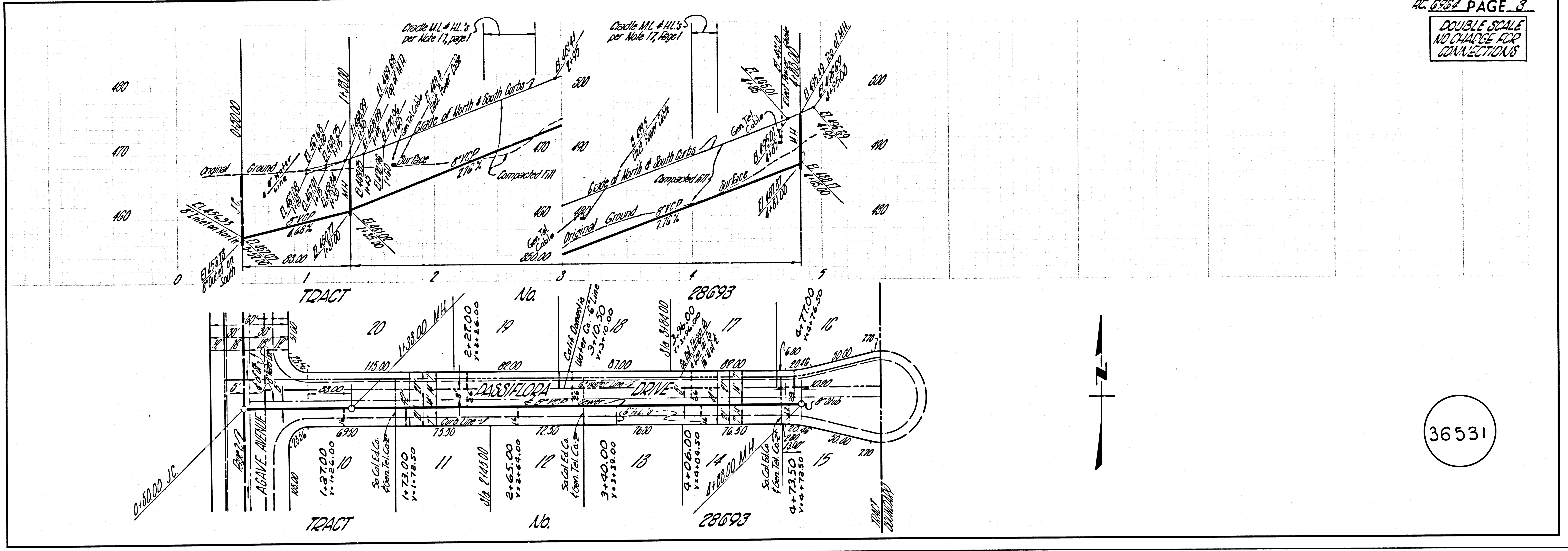
36531

DOUBLE SCALE
NO CHARGE FOR
CONNECTIONS



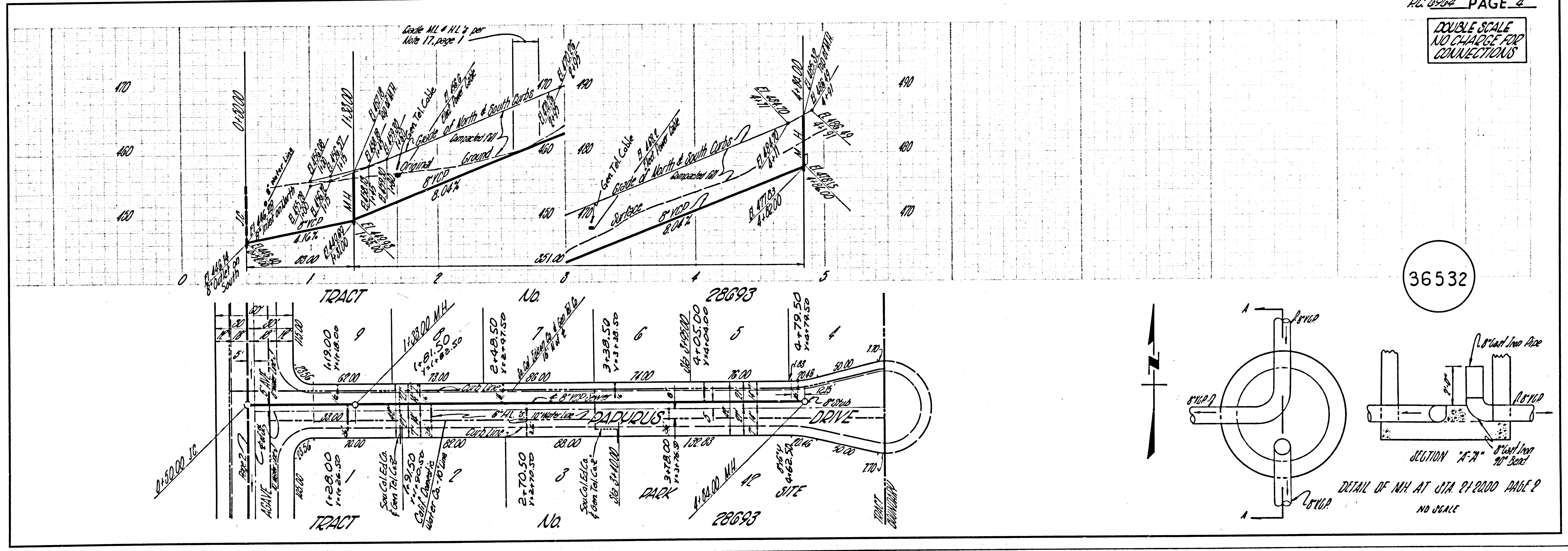
36532

DOUBLE SCALE
NO CHARGE FOR
CONNECTIONS



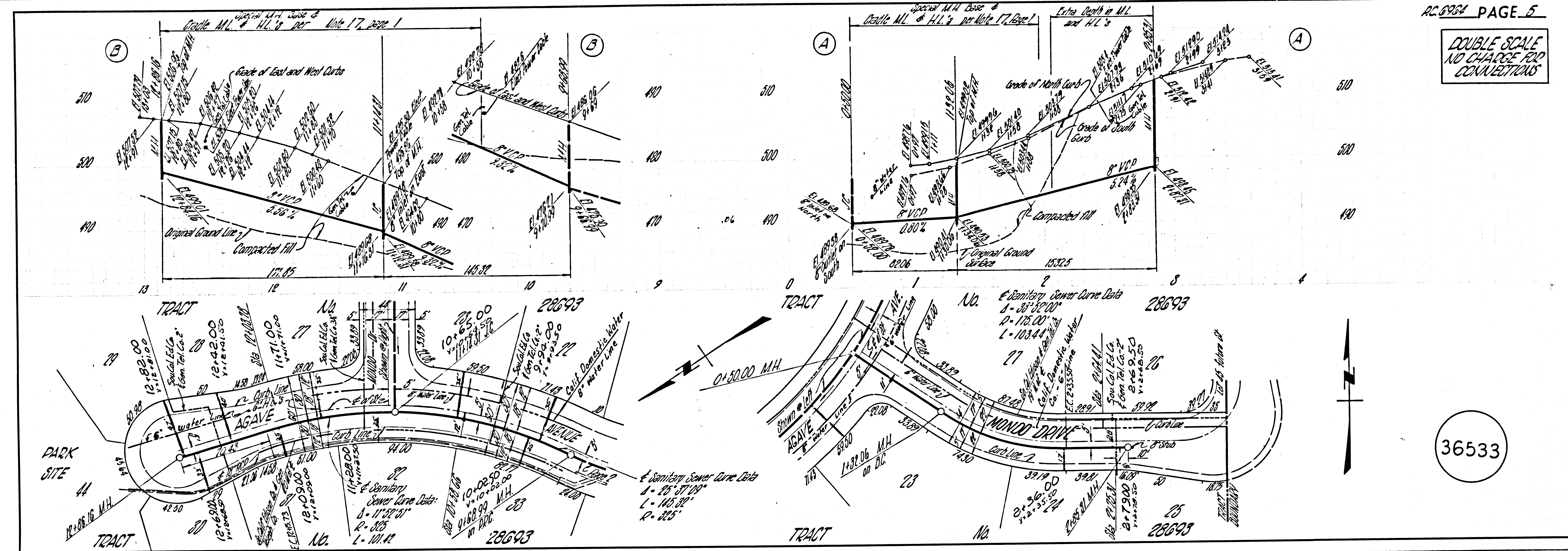
36531

DOUBLE SCALE
NO CHARGE FOR
CONNECTIONS



36532

DOUBLE SCALE
NO CHARGE FOR
CONNECTIONS



36533

DOUBLE SCALE
WHITTIER BLDG. DIST. NO. 11

PROFILE ALIGNMENT AND GRADE OF
SANITARY SEWERS
PAGE 1

TO BE CONSTRUCTED IN
TRACT NO 28693 & EASEMENT
FROM 30 FT. W. OF AGAVE AVENUE TO
106 FT. W. OF OUTRIG STREET

PRIVATE CONTRACT NO. 6964-G

W.S. 38

2 SHEETS, 3 PAGES
SCALE: VERT. 1" = 4' HORIZ. 1" = 40'

PREPARED IN THE OFFICES OF
LAWYER ENGINEERING
AND ARCHITECTURE

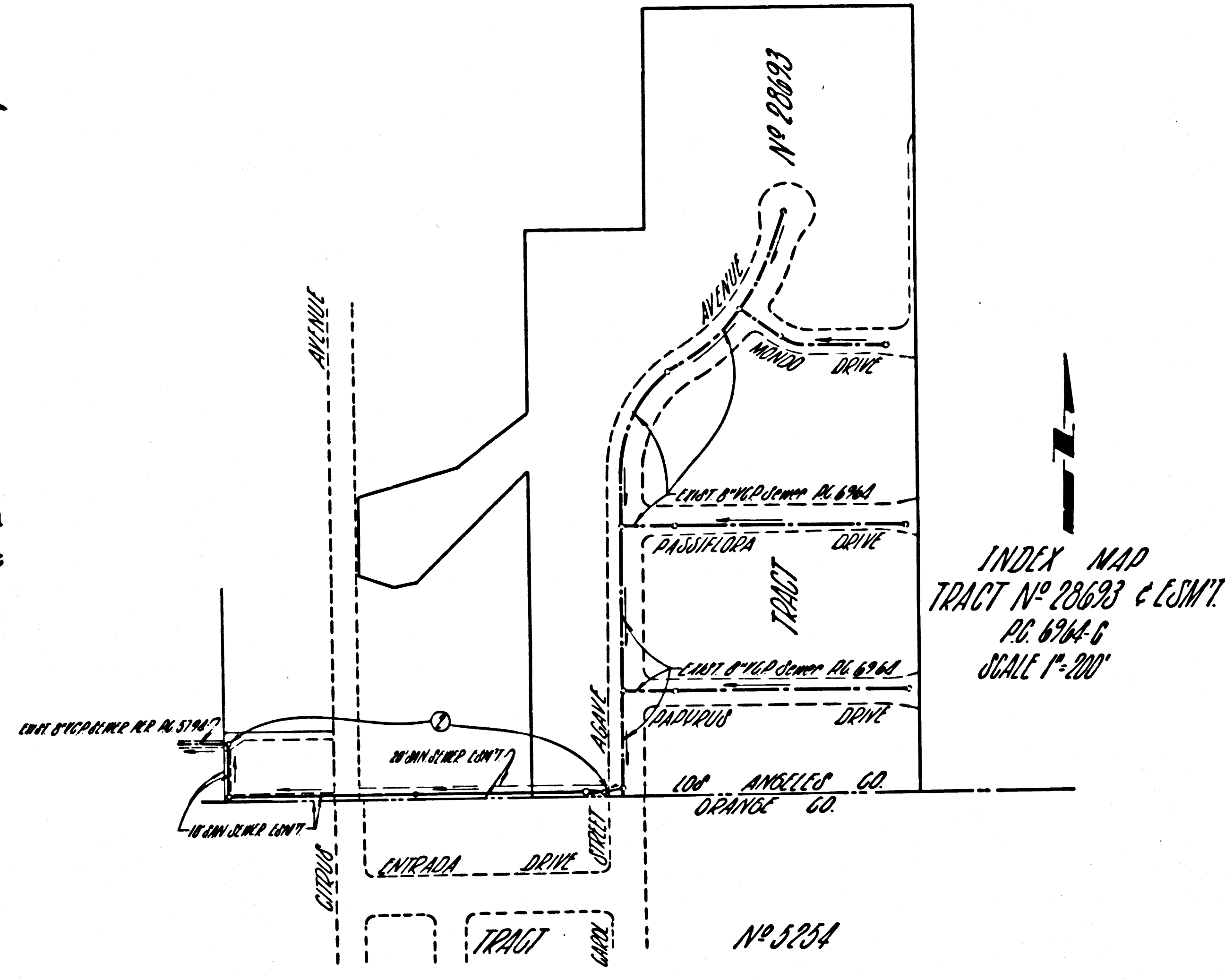
FOR LEGEND SEE PLAN NO. S-1

B.M. 05 1667 ELEV. 494.182
C.C. Man in well 12" dia on E. of 183'
N.E. & intersection of Agave Blvd
& Main St
Date 1/20
QUAD. 19 35

Any connection to the sewage system of County Sanitation District, provided directly or indirectly by the sewers shown on these plans, shall be considered a temporary connection until all area sewered is annexed to said district, at which time the connection shall become permanent. If for any reason the annexation to the district is not completed, the property owner is required to disconnect in the district will be entered into with the district providing for the disposal of sewage from the area.

PRIVATE ENGINEER'S
NOTICE TO CONTRACTOR

THE EXISTENCE AND LOCATION OF ANY UNDERGROUND UTILITY PIPES OR STRUCTURES SHOWN ON THESE PLANS ARE OBTAINED BY A SEARCH OF THE AVAILABLE RECORDS TO THE BEST OF OUR KNOWLEDGE THERE ARE NO EXISTING UTILITIES EXCEPT AS SHOWN ON THIS MAP. THE CONTRACTOR IS REQUIRED TO TAKE PRECAUTIONARY MEASURES TO PROTECT THE UTILITY LINES SHOWN AND ANY OTHER LINES NOT OF RECORD OR NOT SHOWN ON THIS DRAWING.



- NOTES:
- PROVIDE STAKES ON THE PROPERTY LINE OR PROPERTY LINES PRODUCED AT RIGHT ANGLES TO THE SEWER LINE AT THE CENTER LINE OF EACH MANHOLE.
 - NO REPRESENTATIVE OF THE COUNTY ENGINEER WILL SURVEY OR LAY OUT ANY PORTION OF THE WORK.
 - THE PRIVATE ENGINEER SHALL FURNISH THE COUNTY ENGINEER WITH GAUGE SHEETS AND STATIONING FOR ALL HOUSE LATERALS AND Y BRANCHES AND SHALL PROVIDE STAKES FOR THEM AT THEIR PROPER LOCATIONS WITH STATIONING PLAINLY MARKED. ALL HOUSE LATERALS SHALL BE CONSTRUCTED IN A STRAIGHT ALIGNMENT AT RIGHT ANGLES FROM THE MAIN LINE SEWER EXCEPT AS SHOWN ON THE PLANS. HOUSE LATERALS FROM CHIMNEYS SHALL NOT HAVE AN ANGLE OF LESS THAN 45° WITH THE MAIN LINE SEWER. ANY CHANGE IN ALIGNMENT SHALL BE REQUESTED IN WRITING BY THE PRIVATE ENGINEER.
 - THE PRIVATE ENGINEER SHALL FURNISH THE HOUSE LATERAL DEPTH AT THE PROPERTY LINE BELOW THE TOP OF CURB ELEVATION FOR EACH HOUSE LATERAL ON THE GRADE SHEET.
 - NO SEWERAGE SHALL BE MADE IN THESE PLANS WITHOUT THE APPROVAL OF THE COUNTY ENGINEER.
 - THE CONTRACTOR SHALL NOTIFY THE CONSTRUCTION DIVISION BY TELEPHONE, MADISON 9-6747, EXT. 8151, AT LEAST TWENTY-FOUR HOURS BEFORE STARTING ANY WORK UNDER THIS CONTRACT.
 - MANHOLES SHALL BE BRICK SEWER STRUCTURES PER S-3.
 - USE STANDARD MANHOLE FRAMES AND COVERS, S-15, EXCEPT AS NOTED.
 - MANHOLE TOPS BE UNIMPROVED RIGHTS-OF-WAY TO BE SIX INCHES ABOVE FINISHED GRADE.
 - USE EXTRA STRENGTH PIPE. ALL PIPE IS STANDARD DEPTH EXCEPT AS NOTED.
 - USE CEMENT MORTAR OR MECHANICAL COMPRESSION JOINTS FOR ALL V.C.P. JOINTS PER SPCS, SECS. 36 & 46.
 - WHERE EVER GROUND WATER IS ENCOUNTERED DURING THE CONSTRUCTION OF THE SEWERS, THE V.C.P. JOINTS SHALL BE OF JOINT COMPOUND PER SPCS, SECS. 32 & 46, OR MECHANICAL COMPRESSION JOINTS PER SPCS, SEC. 36.
 - IF A POWER POLE IS WITHIN THREE FEET OF THE SEWER, THE SEWER SHALL BE ENCASED, PER S-25, TWO FEET ON EITHER SIDE FROM THE POINT OF INTERFERENCE.
 - IF DURING THE COURSE OF CONSTRUCTION IT IS DETERMINED THAT THERE IS LESS THAN FOUR FEET OF COVER OVER THE TOP OF A MAIN LINE OR HOUSE LATERAL V.C.P. SEWER WHICH IS NOT INDICATED ON THE PLANS, THE PIPE SHALL BE ENCASED PER S-25 UNDER OTHERWISE APPROVED BY THE COUNTY ENGINEER.
 - ALL TRENCHES & LOCAL TRENCH WIDTHS SHALL BE AS SHOWN ON PLANS.
 - REINFORCE ALL TRENCHES WITHIN PAVED AREAS TO MEET L.A. COUNTY ROAD DEPT. OR CALIFORNIA STATE HIGHWAY REQUIREMENTS IN ACCORDANCE WITH PERMITS.
 - FOR ALLOWABLE LEAKAGE TEST USE FORMULA NO. 8, SPCS, SEC. 54 (COUNTY ORDER ONLY).

IN ADDITION TO THE SANITATION DIVISION CONSTRUCTION PERMIT A FIRE ROAD DEPT. PERMIT UNDER OTHERWISE APPROVED BY THE COUNTY ENGINEER.

ALL TRENCHES & LOCAL TRENCH WIDTHS SHALL BE AS SHOWN ON PLANS.

REINFORCE ALL TRENCHES WITHIN PAVED AREAS TO MEET L.A. COUNTY ROAD DEPT. OR CALIFORNIA STATE HIGHWAY REQUIREMENTS IN ACCORDANCE WITH PERMITS.

FOR ALLOWABLE LEAKAGE TEST USE FORMULA NO. 8, SPCS, SEC. 54 (COUNTY ORDER ONLY).

COLLECT CHARGES
AS INDICATED

NO CONNECTIONS FOR THE DISPOSAL OF INDUSTRIAL WASTES SHALL BE MADE TO SEWERS SHOWN ON THESE DRAWINGS WITHOUT WRITTEN PERMISSION FROM THE CHIEF ENGINEER AND GENERAL MANAGER OF THE COUNTY SANITATION DISTRICTS

GRADE TO WHICH THIS IMPROVEMENT IS TO BE CONSTRUCTED ARE SHOWN ON PLANS AND PROFILES. GRADE POINTS FOR TOP OF CURB, CENTER LINE OF STREETS, OR CENTER LINE OF ALLEYS ARE SHOWN BY CIRCLES ON PROFILES. AT ALL POINTS BETWEEN DESIGNATED POINTS THE GRADE SHALL BE ESTABLISHED SO AS TO CONFORM TO A STRAIGHT LINE DRAWN BETWEEN SAID DESIGNATED POINTS. ELEVATIONS ARE IN FEET ABOVE U.S.C. & G.S. SEA LEVEL DATUM OF 1929. THE SEWERING AND THE DATA HEREON ARE HEREBY MADE A PART OF THE SPECIFICATIONS. WORK SHALL BE CONSTRUCTED ACCORDING TO STANDARD SPECIFICATIONS DATED 12/25/52 ON FILE IN THE OFFICE OF THE COUNTY ENGINEER AND SHALL BE PROSECUTED ONLY IN THE PRESENCE OF THE COUNTY ENGINEER. APPROVAL OF THIS PLAN BY THE COUNTY OF LOS ANGELES DOES NOT CONSTITUTE A REPRESENTATION AS TO THE ACCURACY OF THE LOCATION OR THE EXISTENCE OR NON-EXISTENCE OF ANY UNDERGROUND UTILITY PIPE, OR STRUCTURE WITHIN THE LIMITS OF THIS PROJECT. THIS NOTE APPLIES TO ALL PAGES.

IF WORK IS TO BE DONE IN A STATE HIGHWAY, A PERMIT MUST BE OBTAINED FROM THE STATE OF CALIFORNIA, DIVISION OF HIGHWAYS, 120 SOUTH SPRING STREET, LOS ANGELES, CALIFORNIA.

COUNTY OF LOS ANGELES, CALIFORNIA
JOHN A. LAMBE, COUNTY ENGINEER
APPROVED BY: [Signature]
REVIEWED BY: [Signature]
CHECKED BY: [Signature]

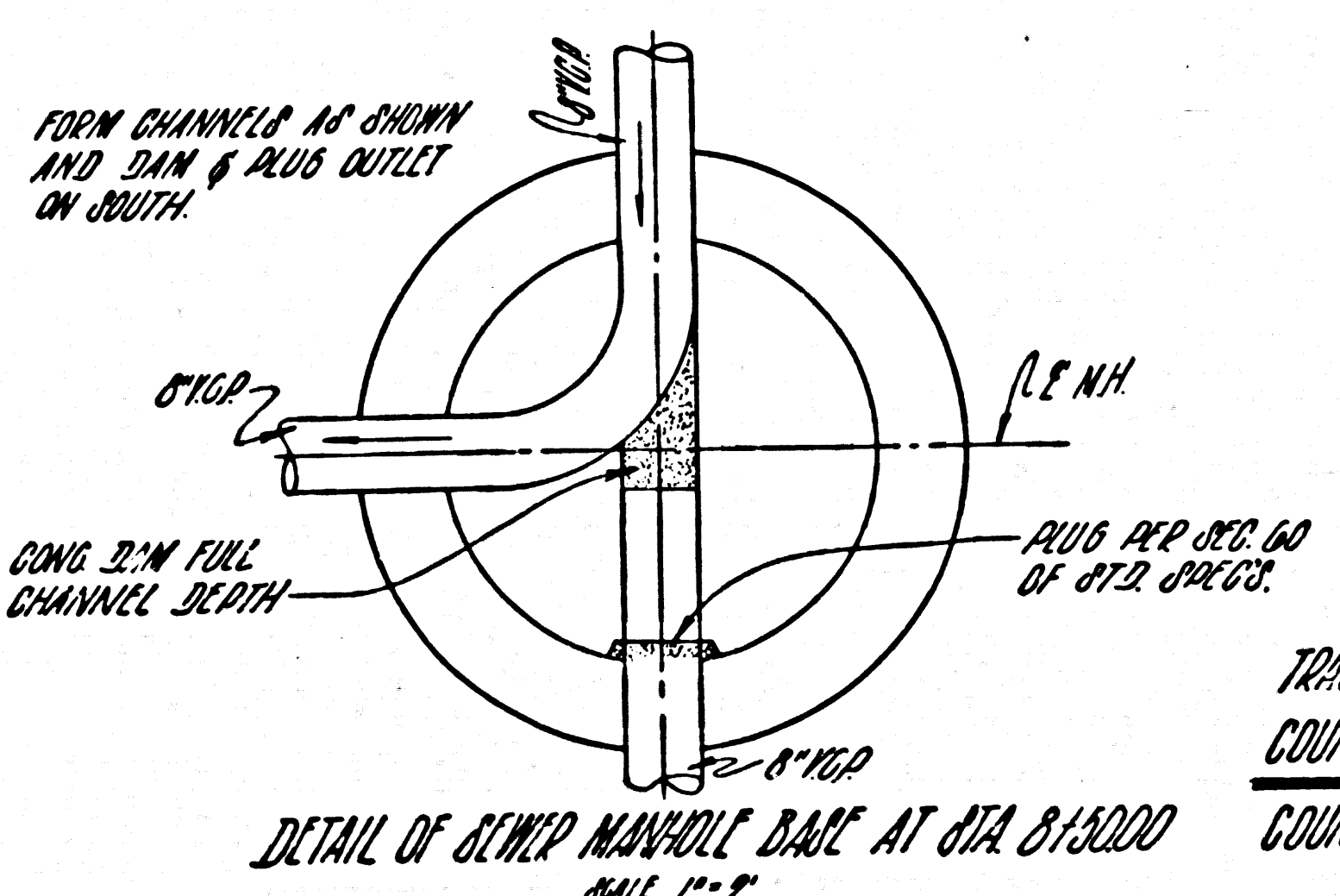
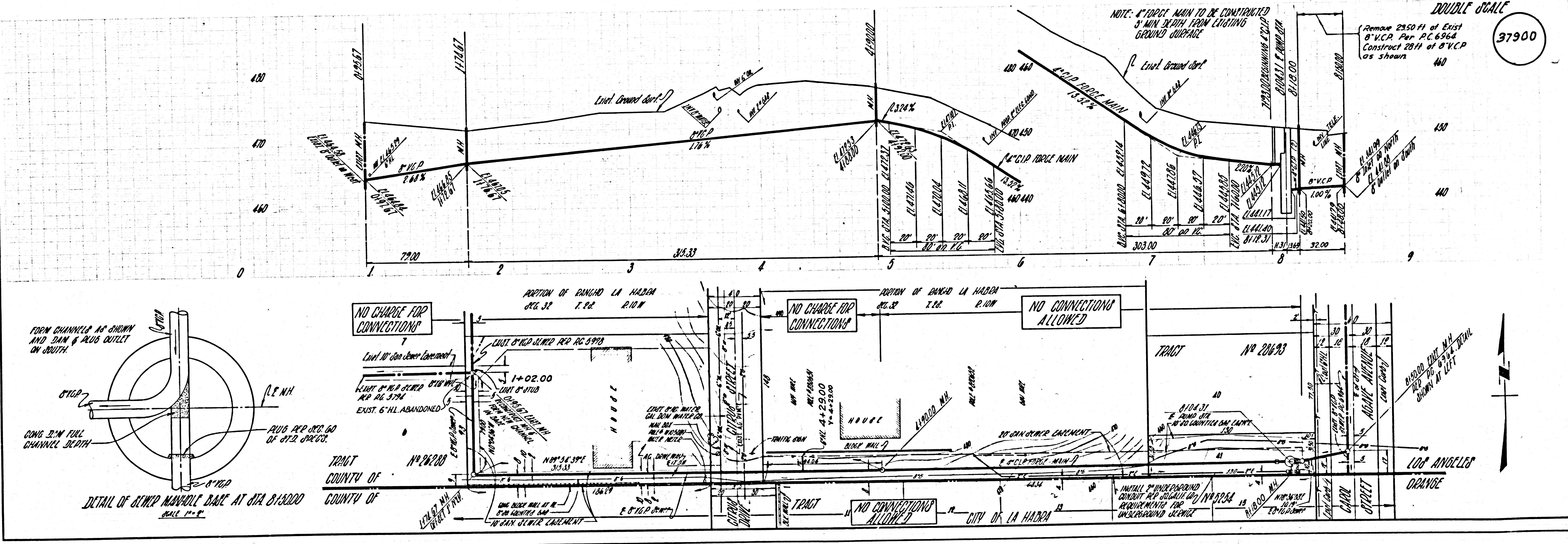
J. D. PARKHURST, CHIEF ENGINEER
LOS ANGELES CO. SAN. DIST. NO. 11
APPROVED BY: [Signature]
OFFICE ENGINEER

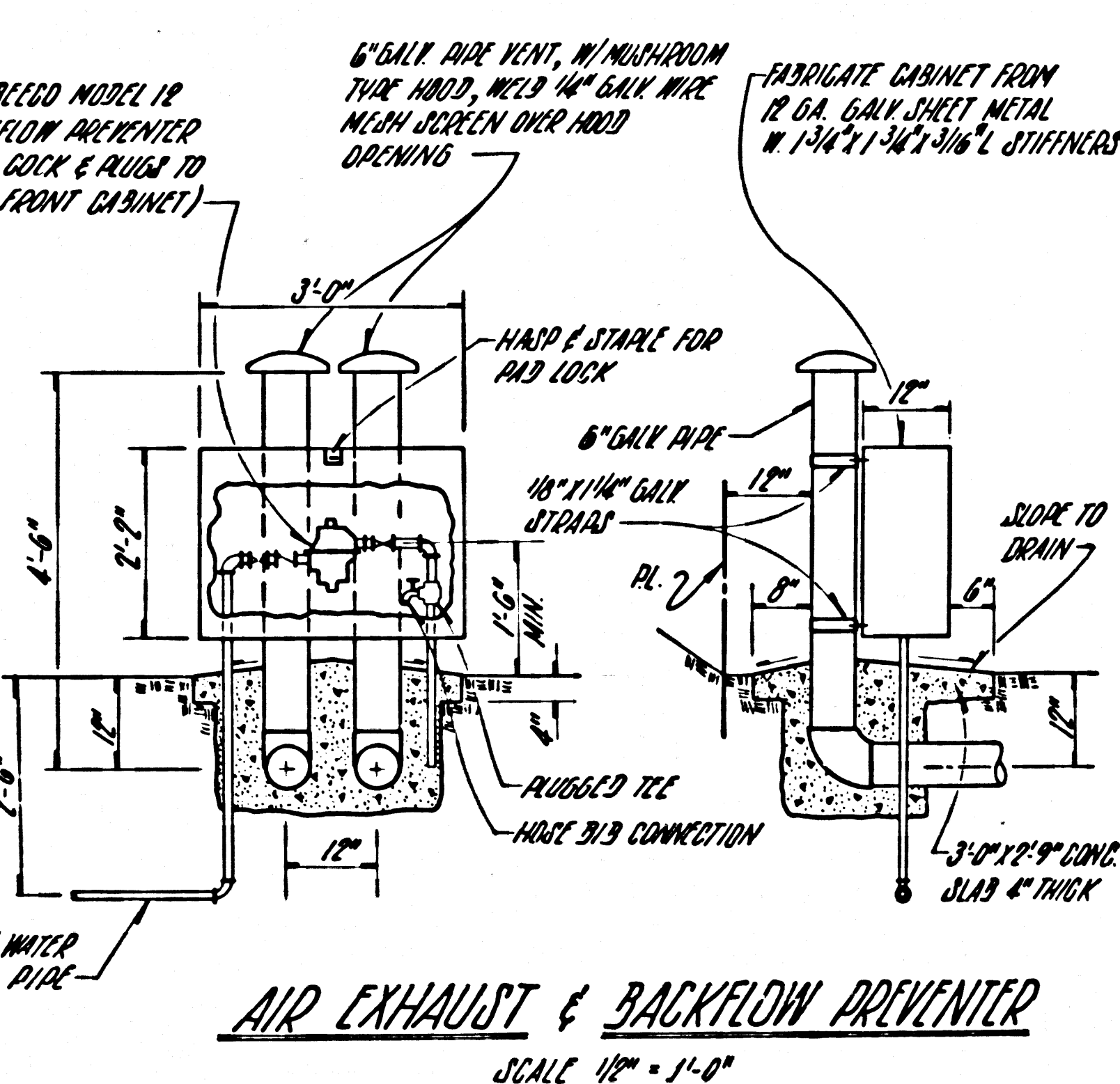
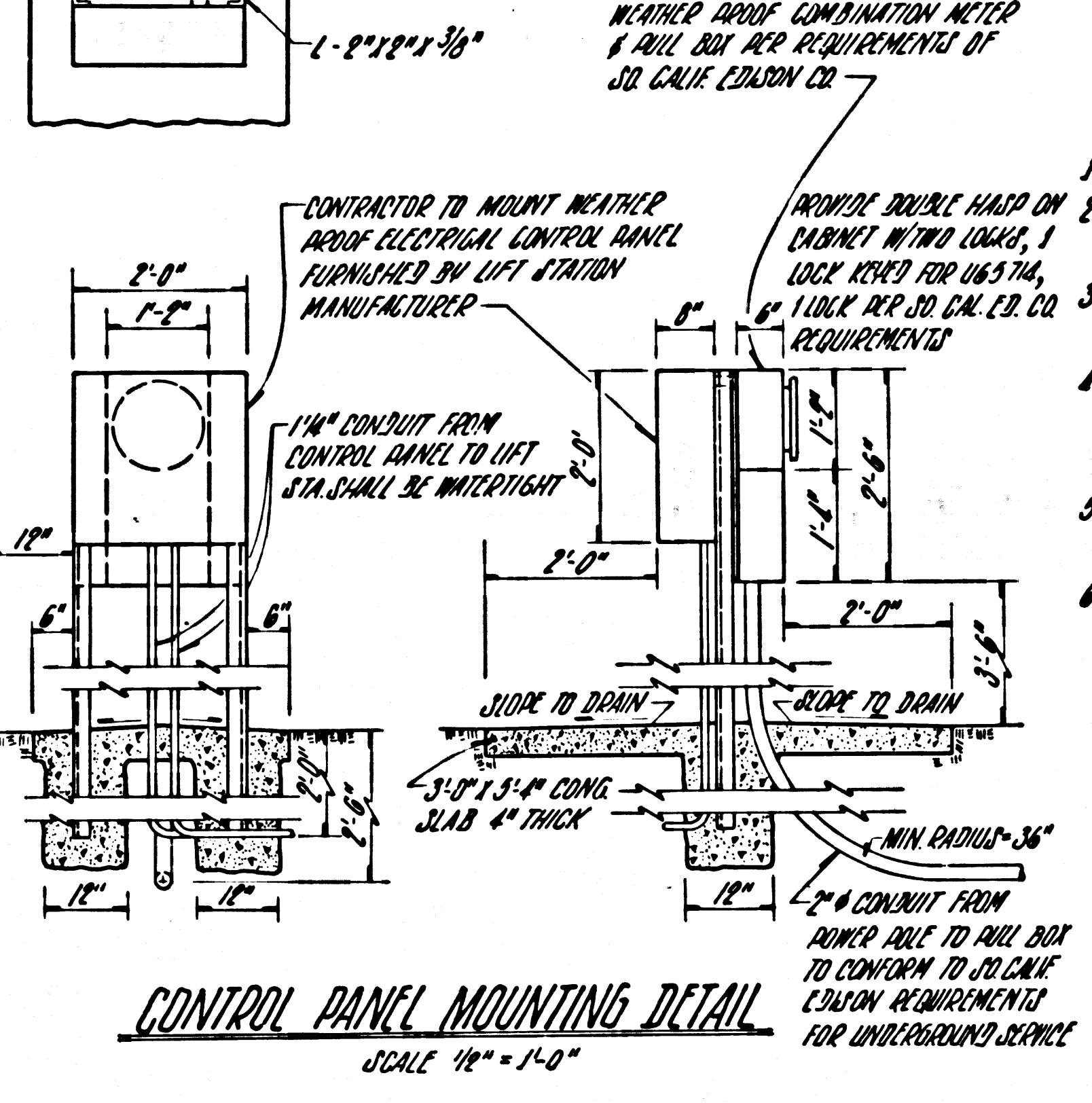
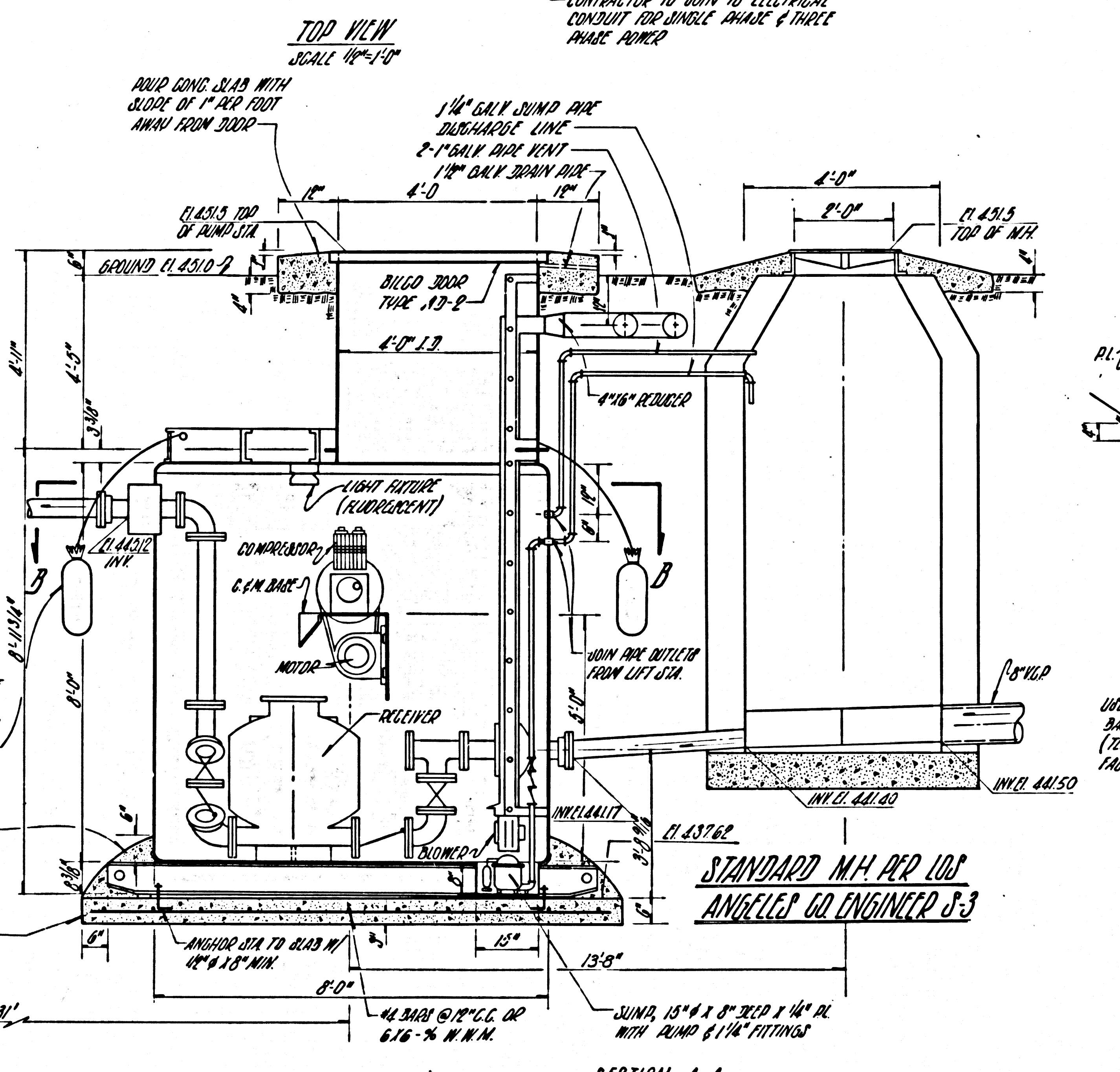
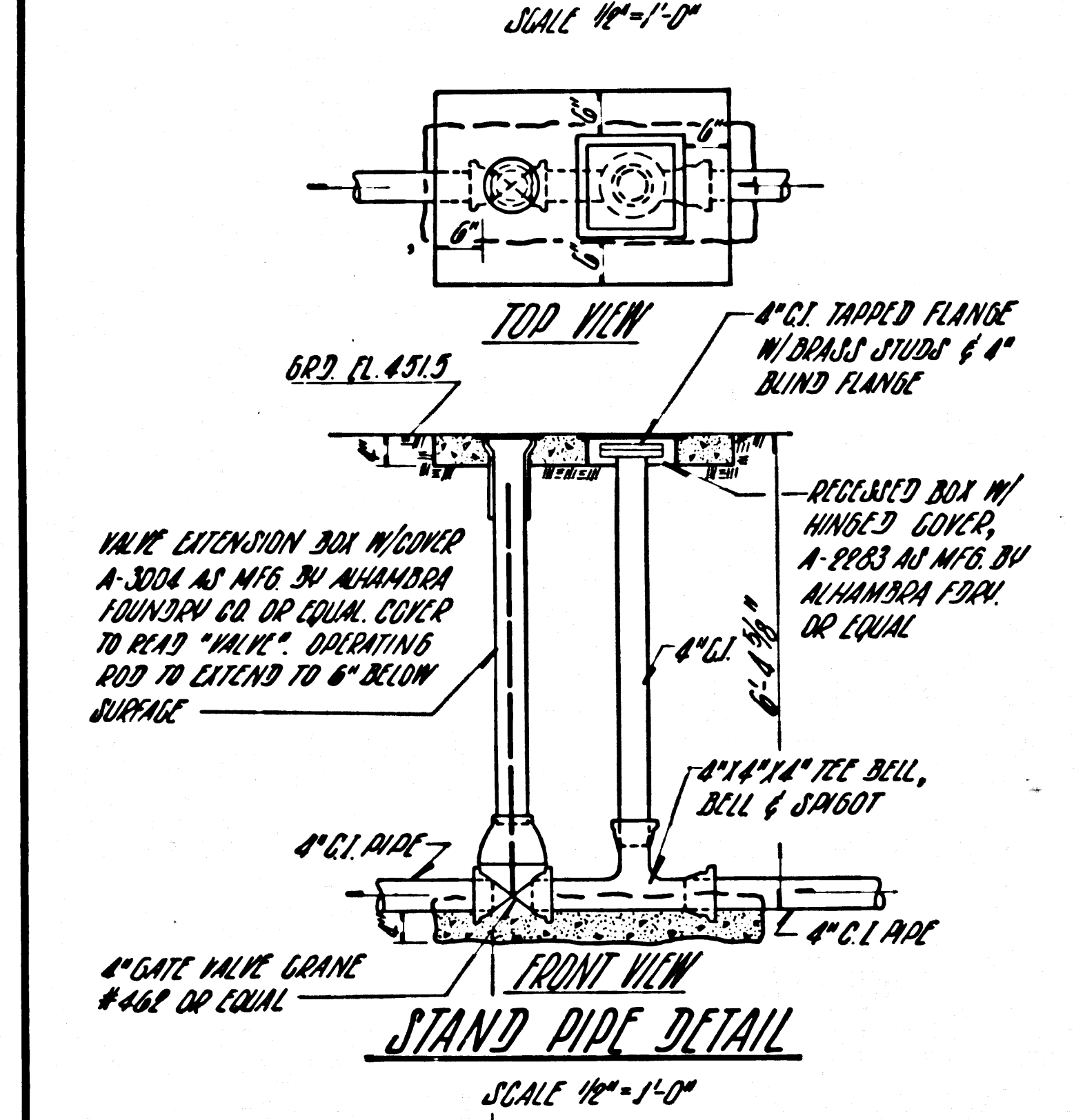
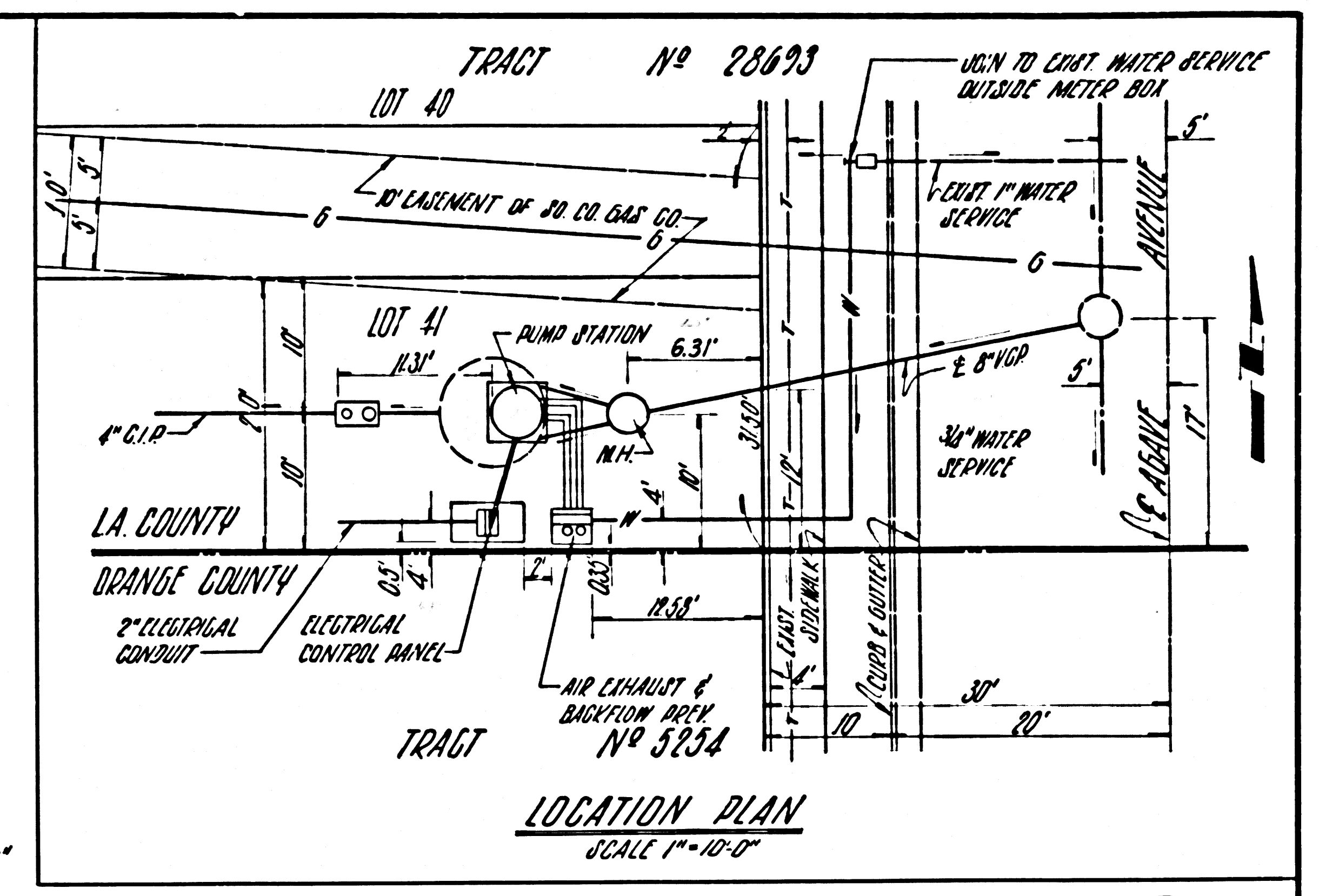
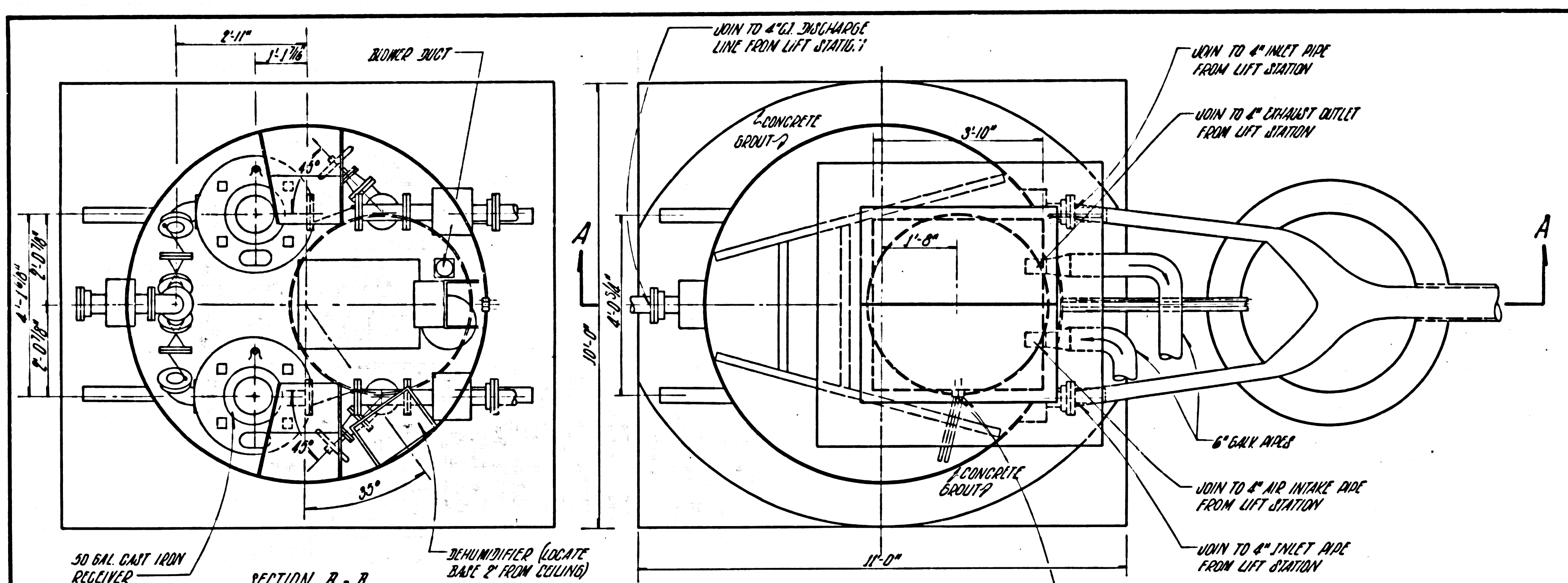
J.N. 0365-26

P. C. 6964-G PAGE 2

DOUBLE SCALE

37900





- GENERAL NOTES** 37901
1. THE CONTRACTOR SHALL VERIFY ALL DIMENSIONS.
 2. ELECTRICAL INSTALLATION TO MEET THE REQUIREMENTS OF ALL APPLICABLE STATE & LOCAL CODES.
 3. THE PUMPING STATION MANUFACTURER'S REPRESENTATIVE SHALL SUPERVISE THE INSTALLATION, STARTING AND TESTING OF EQUIPMENT.
 4. THE CONTRACTOR SHALL MAKE ARRANGEMENTS WITH THE CALIFORNIA DEPARTMENT OF WATER RESOURCES FOR WATER SERVICE.
 5. ANY STANDARD PLANS OF THE COUNTY OF LOS ANGELES APPLICABLE TO THE WORK SHALL BE CONSIDERED A PART OF THESE PLANS.
 6. SEE ADDITIONAL SPECIFICATIONS FOR CONSTRUCTION OF SEWAGE EJECTOR STATION AND APPURTENANCES THEREON FOR TRACT 28693, PREPARED BY ERVIN ENGINEERING.

TO BE PROVIDED BY LIFT STATION MANUFACTURER

PRIVATE CONTRACT NO. 6964-C

SEWAGE EJECTOR STATION
TRACT NO. 28693

DESIGNED BY	L. JOHNSON	ERVIN ENGINEERING CIVIL ENGINEERS - LAND PLANNERS - CONSULTANTS
DRAWN BY	J. GAMA	
CHECKED BY	L. JOHNSON	
DATE	MARCH 1963	
SCALE	AS SHOWN	

BY	DATE	DESCRIPTION OF REVISION	APPROVED	DATE