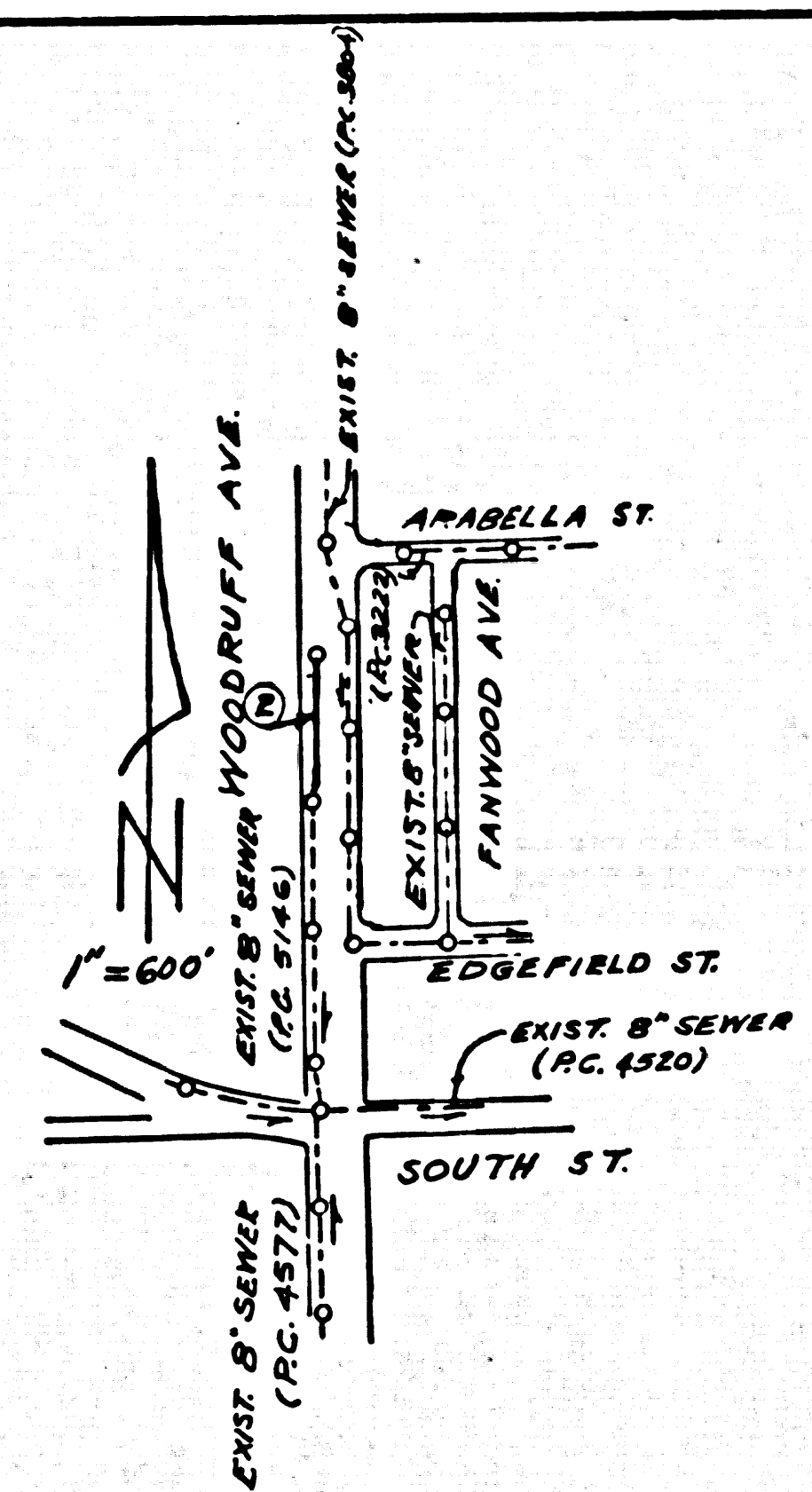


B.M. SY 3094 ELEV. 53.93  
 L.A. CO. PD. DEPT. B.M. TAG SA CURB  
 2'45" W. B.C.R. AT SW COR. SOUTH  
 ST. & WOODRUFF AVE. & 40' S. E. INT.  
 W. OF E INTERSECTION.  
 LAKEWOOD QUAD. 1960



INDEX MAP  
 P.C. 6974

**PRIVATE ENGINEERS NOTICE TO CONTRACTOR**  
 THE EXISTENCE AND LOCATION OF ANY UNDERGROUND UTILITY  
 PIPES OR STRUCTURES SHOWN ON THESE PLANS WERE OBTAINED  
 BY A SEARCH OF THE AVAILABLE RECORDS. TO THE BEST OF  
 OUR KNOWLEDGE THERE ARE NO EXISTING UTILITIES EXCEPT AS  
 SHOWN ON THIS PLAN. THE CONTRACTOR IS REQUIRED TO TAKE  
 PRECAUTIONARY MEASURES TO PROTECT UTILITY LINES SHOWN  
 AND ANY OTHER LINES OF RECORD OR NOT SHOWN ON THIS  
 PLAN.  
*Samuel D. Galt*  
 REC 13420 APR 23 1964

LAKEWOOD BLDG. DIST. NO. 4.01

PROFILE ALIGNMENT AND GRADE OF  
 SANITARY SEWERS PAGE 1

PRIVATE CONTRACT NO. 6974

W.S. 33  
 1 SHEET 2 PAGES  
 SCALE: HORIZ. 1"=40'  
 VERT. 1"=4'

PREPARED IN THE OFFICES OF  
**NAT NEFF ENGINEERING COMPANY**  
 13016 S. EUCLID AVENUE  
 GARDEN GROVE, CALIFORNIA  
 BY: *Samuel D. Galt*  
 REG. C. E. NO. 13420

FOR LEGEND SEE PLAN NO. S-64

- NOTES:
1. PROFILE STAKES ON THE PROPERTY LINE OR PROPERTY LINES PRODUCED AT RIGHT ANGLES TO THE SEWER LINE AT THE CENTER LINE OF EACH MANHOLE.
  2. NO REPRESENTATIVE OF THE CITY ENGINEER WILL SURVEY OR LAY OUT ANY PORTION OF THE WORK.
  3. THE PRIVATE ENGINEER SHALL FURNISH THE CITY ENGINEER WITH GRADE SHEETS AND STATIONINGS FOR ALL HOUSE LATERALS AND Y LATERALS AND SHALL PROVIDE STAKES FOR THEM AT THEIR PROPER LOCATIONS WITH STATIONING PLAINLY MARKED. ALL HOUSE LATERALS SHALL BE CONSTRUCTED AT A STRAIGHT ALIGNMENT AT RIGHT ANGLES FROM THE MAIN LINE SEWER EXCEPT AS SHOWN ON THE PLANS. HOUSE LATERALS FROM CHIMNEYS SHALL NOT HAVE AN ANGLE OF LESS THAN 45° WITH THE MAIN LINE SEWER. ANY CHANGE IN ALIGNMENT SHALL BE REQUESTED IN WRITING BY THE PRIVATE ENGINEER.
  4. THE PRIVATE ENGINEER SHALL FURNISH THE HOUSE LATERAL DEPTH AT THE PROPERTY LINE BELOW THE TOP OF CURB ELEVATION FOR EACH HOUSE LATERAL ON THE GRADE SHEET.
  5. NO REVISIONS SHALL BE MADE IN THESE PLANS WITHOUT THE APPROVAL OF THE COUNTY ENGINEER.
  6. THE CONTRACTOR SHALL NOTIFY THE CONSTRUCTION DIVISION BY TELEPHONE, MADISON 9-0747, EXT. 8153, AT LEAST TWENTY-FOUR HOURS BEFORE STARTING ANY WORK UNDER THIS CONTRACT.
  7. MANHOLES SHALL BE BRICK SEWER STRUCTURES PER S-104. PRECAST CONCRETE MANHOLES PER S-6-132 OR S-6-173 MAY BE USED AS AN ALTERNATE IN LOCATIONS APPROVED BY THE CITY ENGINEER.
  8. USE STANDARD MANHOLE FRAMES AND COVERS, S-6-177, EXCEPT AS NOTED.
  9. MANHOLE TOPS IN UNIMPROVED PORTS-OF-WAY TO BE SIX INCHES ABOVE FINISHED GRADE.
  10. USE EXTRA STRENGTH PIPE. ALL PIPE IS STANDARD DEPTH EXCEPT AS NOTED.
  11. MECHANICAL COMPRESSION JOINTS FOR ALL V.C.P. JOINTS PER SPEC. SECC. 24 & 44.4.5.
  12. ALL STATE AND LOCAL TRENCH SAFETY ORDERS SHALL BE RIGIDLY ENFORCED.
  13. IF A POWER POLE IS WITHIN THREE FEET OF THE SEWER, THE SEWER SHALL BE ENCASED, PER S-6-172, CASE III, TWO FEET ON EACH SIDE FROM THE POINT OF INTERFERENCE.
  14. IF DURING THE COURSE OF CONSTRUCTION IT IS DETERMINED THAT THERE IS LESS THAN FOUR FEET OF COVER OVER THE TOP OF A MAIN LINE OR HOUSE LATERAL V.C.P. SEWER WHICH IS NOT INDICATED ON THE PLANS, THE PIPE SHALL BE ENCASED PER S-6-172, CASE III, UNLESS OTHERWISE APPROVED BY THE CITY ENGINEER.
  15. HOUSE LATERALS TO BE CONSTRUCTED WITH INVERTS AT PROPERTY LINE... PER BELOW CURB GRADE EXCEPT AS NOTED.
  16. RESURFACE ALL TRENCHES WITHIN PAVED AREAS TO MEET L.A. COUNTY ROAD DEPT. OF CALIFORNIA STATE HIGHWAY REQUIREMENTS IN ACCORDANCE WITH PERMITS.
  17. FOR ALLOWABLE LEAKAGE TEST USE FORMULA NO. 2..... SPEC. SEC. 24.

GRADES TO WHICH THIS IMPROVEMENT IS TO BE CONSTRUCTED ARE SHOWN ON PLANS AND PROFILES. GRADE POINTS FOR TOP OF CURBS, CENTER LINE OF STREETS, OR CENTER LINE OF ALLEYS ARE SHOWN BY CIRCLES OR SQUARES AT ALL POINTS BETWEEN DESIGNATED POINTS. THE GRADE SHALL BE ESTABLISHED SO AS TO CONFORM TO A STRAIGHT LINE DRAWN BETWEEN SAID DESIGNATED POINTS. ELEVATIONS ARE IN FEET ABOVE U.S.C. & G.S. SEA LEVEL DATUM OF 1929. THE DRAWINGS AND THE DATA HEREON ARE HEREBY MADE A PART OF THE SPECIFICATIONS. WORK SHALL BE CONSTRUCTED ACCORDING TO STANDARD SPECIFICATIONS DATED MAY 22, 1962, ON FILE IN THE OFFICE OF THE CITY ENGINEER AND SHALL BE PROSECUTED ONLY IN THE PRESENCE OF THE CITY ENGINEER. BEFORE WORK CAN BE STARTED, THE CONTRACTOR MUST OBTAIN A PERMIT TO EXCAVATE IN CITY STREETS FROM THE L.A. COUNTY SOIL DISTRICT OFFICE NO. 1, MAKE A DEPOSIT WITH THE CITY OF LAKEWOOD 5050 CLARK AVE., LAKEWOOD, CALIFORNIA, SUFFICIENT TO COVER THE COST OF CONSTRUCTION INSPECTION AND RECORD PLANS. APPROVAL OF THIS PLAN BY THE CITY OF LAKEWOOD DOES NOT CONSTITUTE A REPRESENTATION AS TO THE ACCURACY OF THE LOCATION OR OF THE EXISTENCE OR NON-EXISTENCE OF ANY UNDERGROUND UTILITY PIPE, OR STRUCTURE WITHIN THE LIMITS OF THE PROJECT. THIS NOTE APPLIES TO ALL PAGES. IF WORK IS TO BE DONE IN A STATE HIGHWAY, A PERMIT MUST BE OBTAINED FROM THE STATE OF CALIFORNIA, DIVISION OF HIGHWAYS, 120 SOUTH SPRING STREET, LOS ANGELES, CALIFORNIA.

CITY OF LAKEWOOD, CALIFORNIA  
 JOHN A. LAMBIE, CITY ENGINEER J. D. PARKHURST, CHIEF ENGINEER  
 CO. SAN. DIST. NO. 23

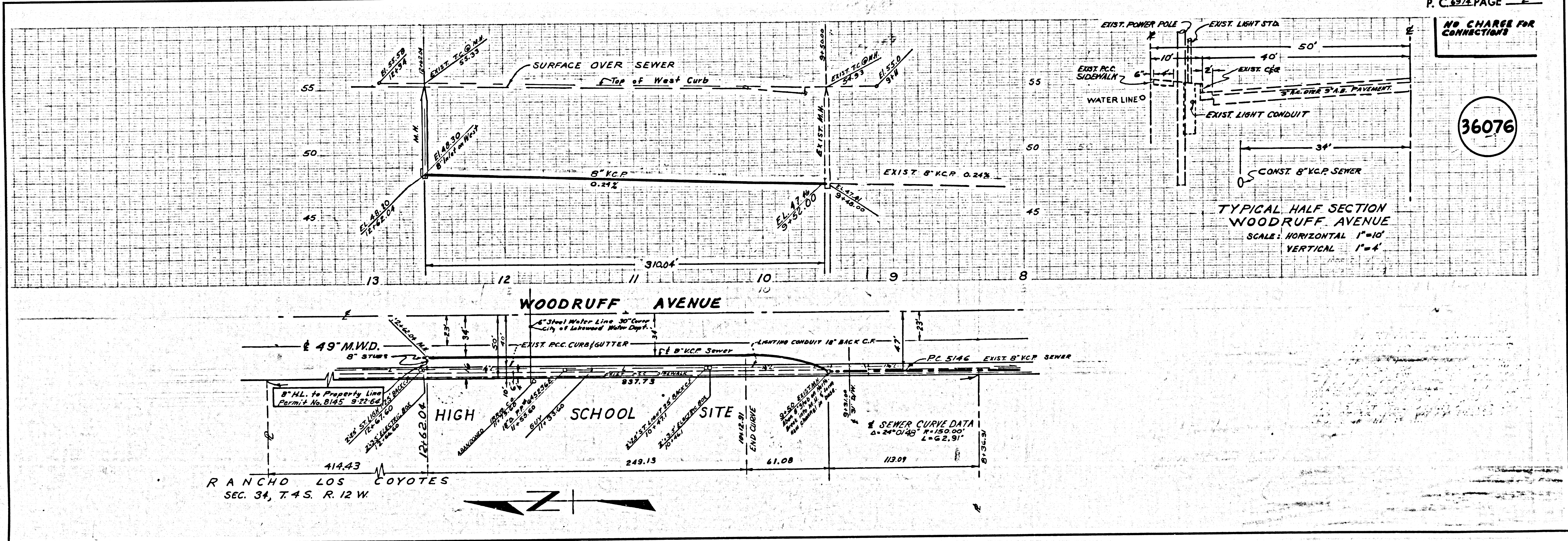
APPROVED BY: *Samuel D. Galt* ASSISTANT SANITATION ENGINEER APPROVED BY: *J. D. Parkhurst* CHIEF ENGINEER

SUBMITTED BY: *Samuel D. Galt* 103 CENTER THE REGIONAL ENGINEER  
 CHECKED BY: *Samuel D. Galt* 138/8

COLLECT CHARGES  
 AS INDICATED  
*Samuel D. Galt*

NO CONNECTIONS FOR THE DISPOSAL OF INDUSTRIAL WASTES SHALL BE MADE TO SEWERS SHOWN ON THESE DRAWINGS WITHOUT WRITTEN PERMISSION FROM THE CHIEF ENGINEER AND GENERAL MANAGER OF THE COUNTY SANITATION DISTRICTS.  
 APPROVED: *Robert A. Moore*  
 INDUSTRIAL WASTE DIVISION

36075



P. C. 6974 PAGE 2

NO CHARGE FOR CONNECTIONS

36076

TYPICAL HALF SECTION  
 WOODRUFF AVENUE  
 SCALE: HORIZONTAL 1"=10'  
 VERTICAL 1"=4'