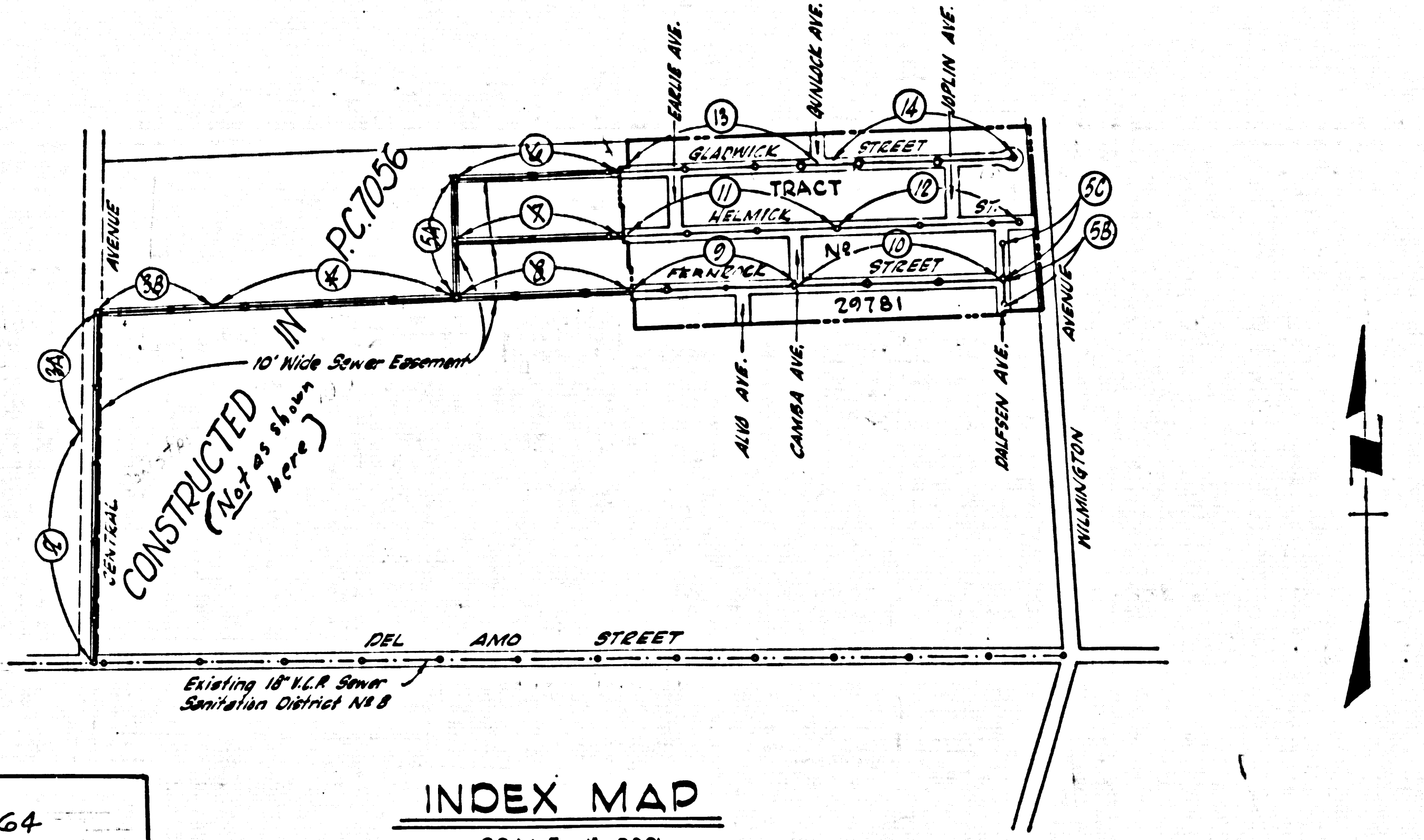


B.M. SY. 3972 ELEV. 4.037  
 Fd. U.S.C. and G.S. Br. Cap Mark Flush with  
 ground 5.85' W. of Wilmington Ave.  
 1.65' W. Drwy. To House N 22177  
 Wilmington Ave. Mid. N 790-1946  
 GARDENA QUAD. 19 60

**NOTICE TO CONTRACTOR:**  
 The existence and location of any underground  
 utility pipes or structures shown on this plan  
 are obtained by a search of the available records.  
 The contractor is required to take due precautionary  
 measures to protect the utility lines not of record  
 or not shown on these plans.

PROFILE ALIGNMENT AND GRADE OF  
**LENNOX BLDG. DIST. NO. 7**  
 SANITARY SEWERS PAGE 1  
 TO BE CONSTRUCTED IN  
 TRACT N° 29781  
 PRIVATE CONTRACT NO. 6975

W.S. 26  
 7 SHEETS, 14 PAGES  
 SCALE: VERT. 1" = 4' HORIZ. 1" = 40'  
 JUNE, 1964  
 PREPARED IN THE OFFICES OF  
**VOORHEIS-TRINDLE-NELSON**  
 13794 BEACH BLVD. WESTMINSTER, CALIF. DIAL. 74-33563  
 REG. C. E. NO. 14385



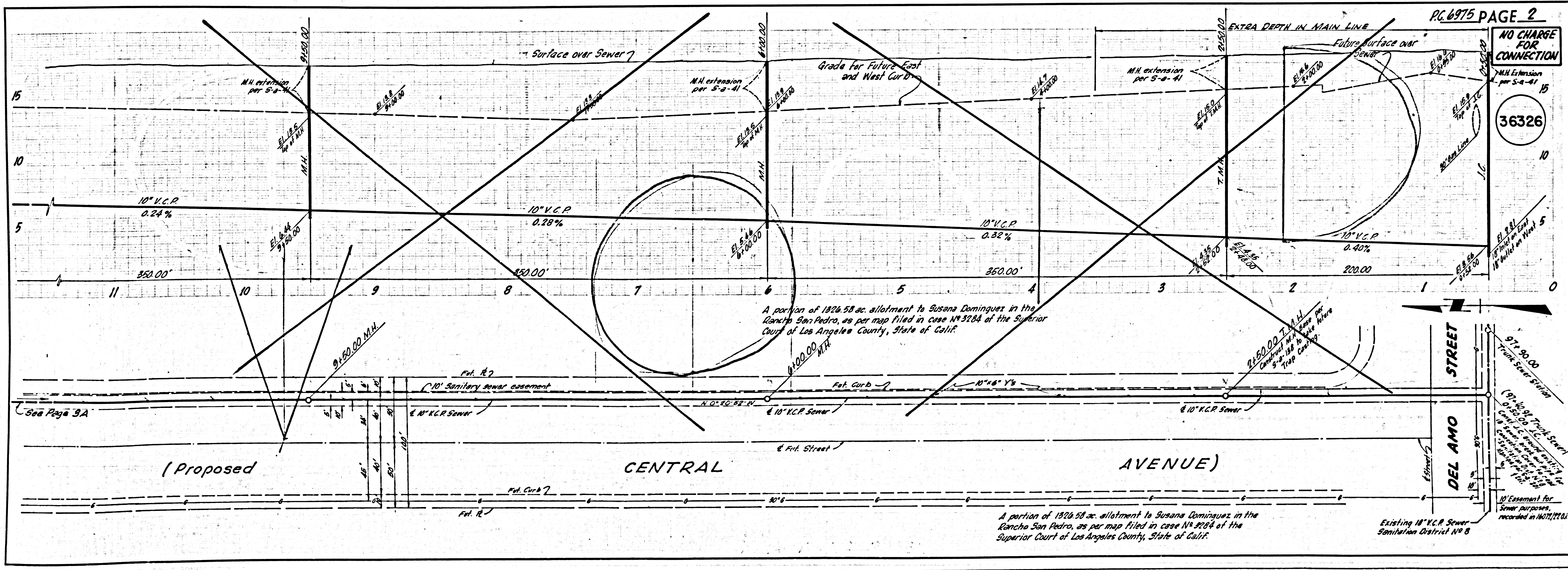
REVISION: 12-4-64  
 Pages Void 2, 3A, 3B, 4, 5A,  
 6, 7 and B  
 Constructed in PC. 7056  
 Approved: *Bernard Valadez*

**COLLECT CHARGES AS INDICATED**  
 John N. 774/18/19/64

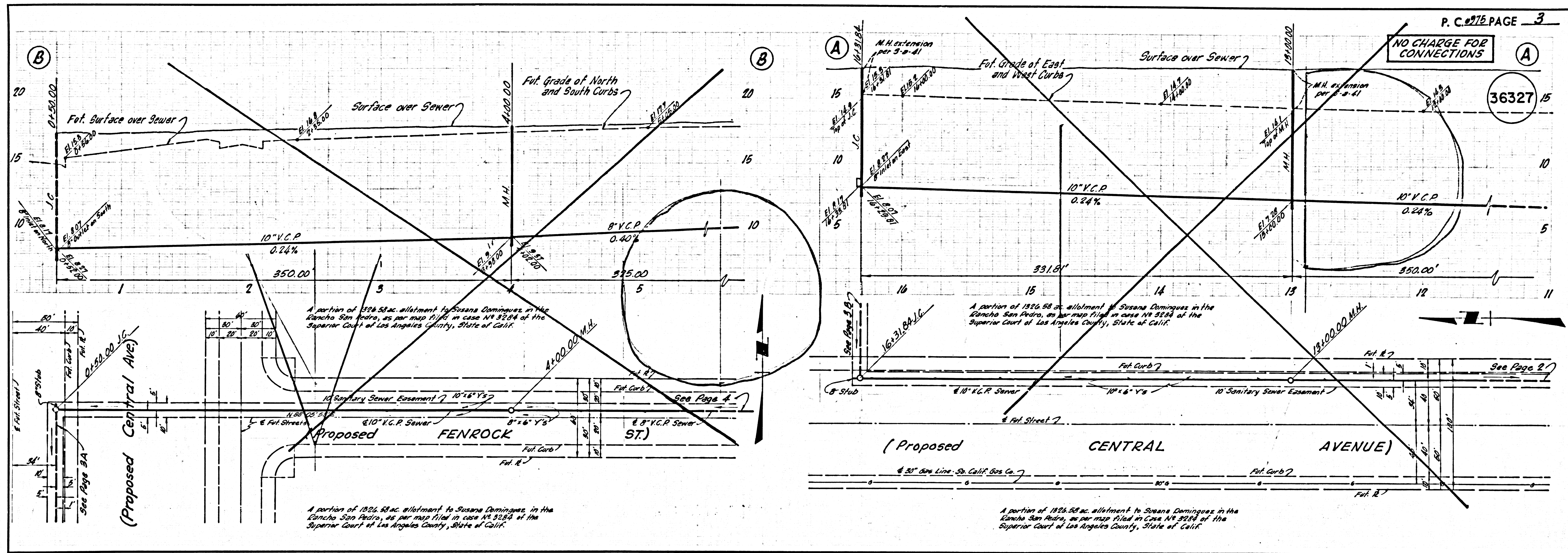
NO CONNECTIONS FOR THE DISPOSAL OF  
 INDUSTRIAL WASTES SHALL BE MADE TO  
 SEWERS SHOWN ON THESE DRAWINGS  
 WITHOUT WRITTEN PERMISSION FROM THE  
 CHIEF ENGINEER AND GENERAL MANAGER  
 OF THE COUNTY SANITATION DISTRICTS.

NOTE:  
 GRADES TO WHICH THIS IMPROVEMENT IS TO BE CONSTRUCTED ARE SHOWN ON PLANS AND PROFILES. GRADE POINTS FOR TOP OF  
 CURBS, CENTER LINE OF STREETS, OR CENTER LINE OF ALLEYS ARE SHOWN BY CIRCLES ON PROFILES AT ALL POINTS BETWEEN DESIGNATED  
 POINTS THE GRADE SHALL BE ESTABLISHED SO AS TO CONFORM TO A STRAIGHT LINE DRAWN BETWEEN SAID DESIGNATED POINTS.  
 ELEVATIONS ARE IN FEET ABOVE U.S.C. & G.S. SEA LEVEL DATUM OF 1929.  
 THIS DRAWING AND THE DATA HEREON ARE HEREBY MADE A PART OF THE SPECIFICATIONS.  
 BEFORE WORK CAN BE STARTED, THE CONTRACTOR MUST OBTAIN A PERMIT TO EXCAVATE IN COUNTY STREETS FROM THE L.A. COUNTY  
 COUNTY ENGINEER AND SHALL BE PROSECUTED ONLY IN THE PRESENCE OF THE COUNTY ENGINEER.  
 BEFORE WORK CAN BE STARTED, THE CONTRACTOR MUST OBTAIN A PERMIT TO EXCAVATE IN COUNTY STREETS FROM THE L.A. COUNTY  
 ROAD DEPT., DISTRICT OFFICE NO. 1 AND PAY A FEE TO THE COUNTY ENGINEER, ROOM 338, COUNTY ENGINEERING BUILDING,  
 ONE WEST SECOND STREET OR FILE WITH THE REGIONAL OFFICE, SUFFICIENT TO COVER THE COST OF  
 CONSTRUCTION INSPECTION AND RECORD PLANS.  
 APPROVAL OF THIS PLAN BY THE COUNTY OF LOS ANGELES DOES NOT CONSTITUTE A REPRESENTATION AS TO THE ACCURACY OF  
 THE LOCATION OF OR THE EXISTENCE OR NON-EXISTENCE OF ANY UNDERGROUND UTILITY PIPE, OR STRUCTURE WITHIN THE LIMITS OF THIS  
 PROJECT. THIS NOTE APPLIES TO ALL PAGES.  
 IF WORK IS TO BE DONE IN A STATE HIGHWAY, A PERMIT MUST BE OBTAINED FROM THE STATE OF CALIFORNIA, DIVISION OF HIGHWAYS,  
 126 SOUTH SPRING STREET, LOS ANGELES, CALIFORNIA.

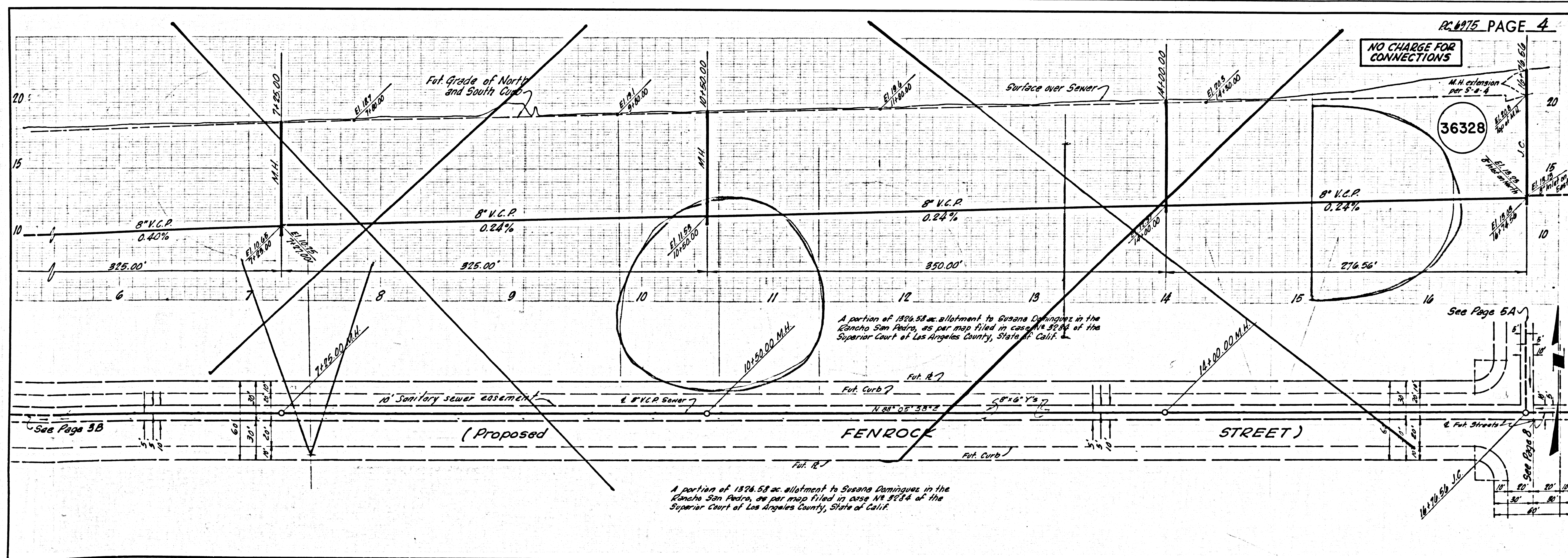
COUNTY OF LOS ANGELES, CALIFORNIA  
 JOHN A. LAMBE, COUNTY ENGINEER  
 APPROVED BY: *Bernard Valadez*  
 ASSISTANT SANITATION ENGINEER  
 J. D. PARKHURST, CHIEF ENGINEER  
 APPROVED BY: *J. D. Parkhurst*  
 OFFICE ENGINEER  
 CHECKED BY: *Bernard Valadez*  
 REG. C. E. NO. 14385  
 J. N. 0363.09







MS 17153 L.A. COUNTY SEWER SHEET NO. 1 SOUTHERN CALIFORNIA BLUEPRINT CO.



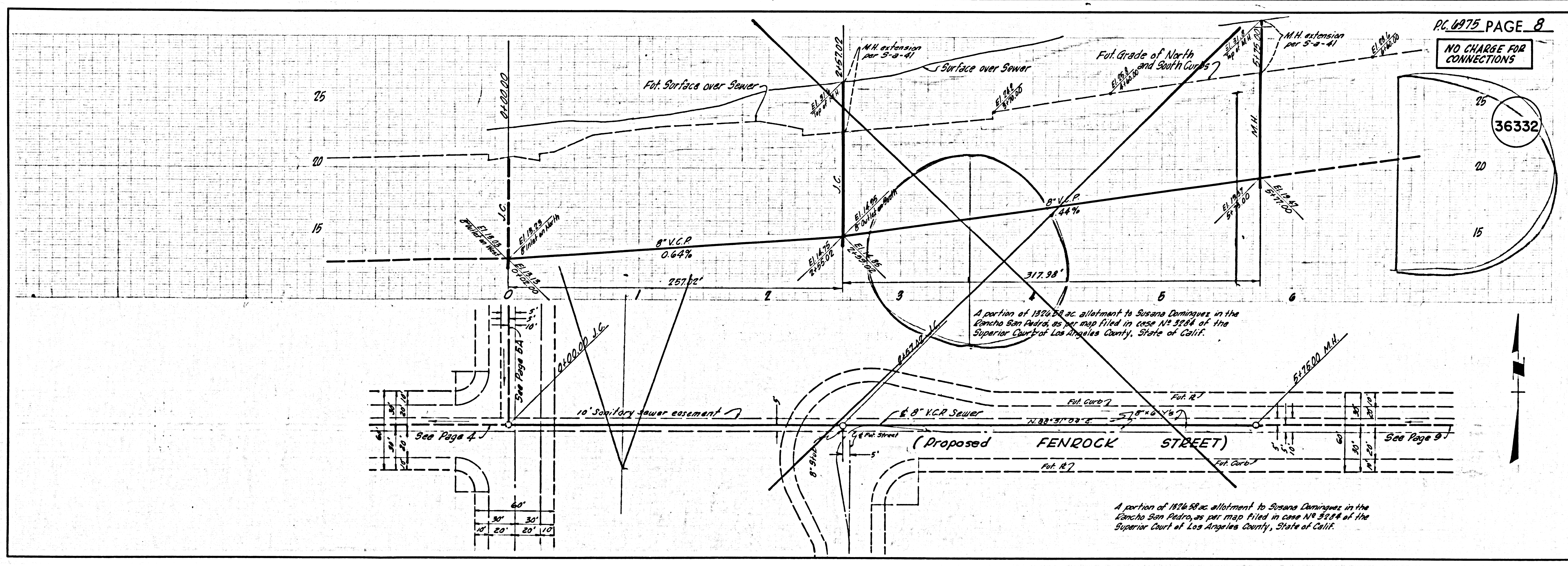
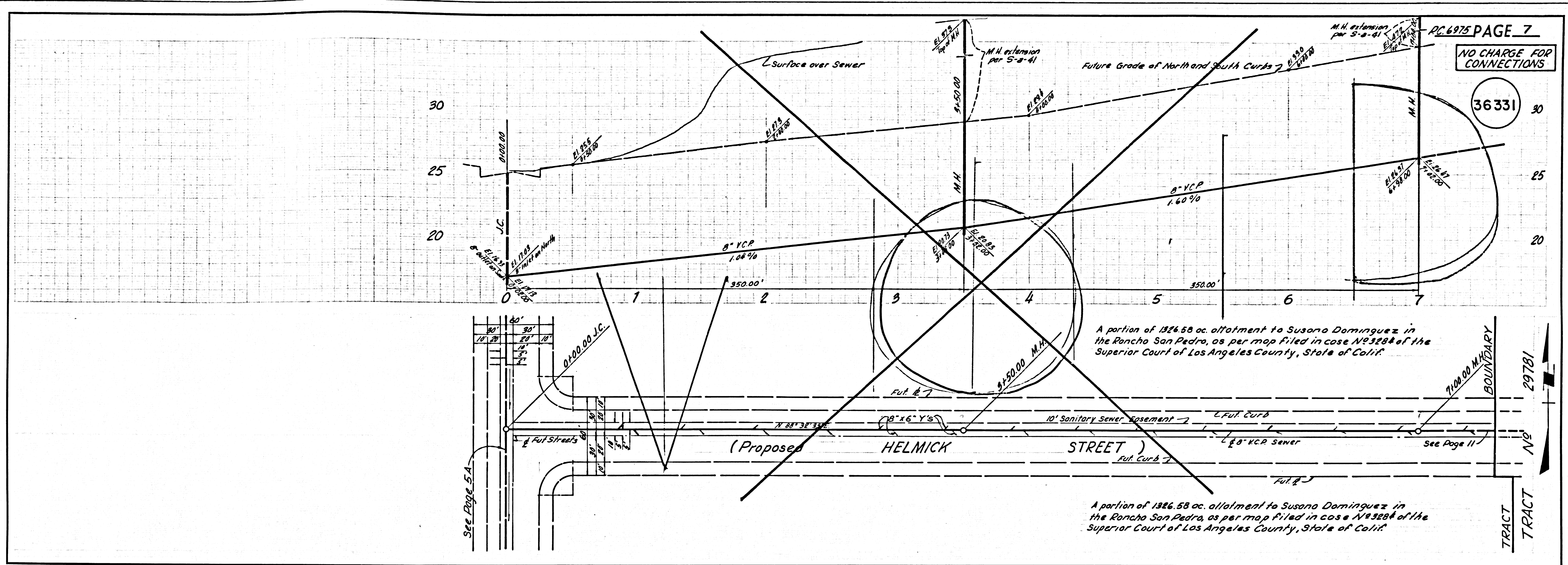
2500 30

15175





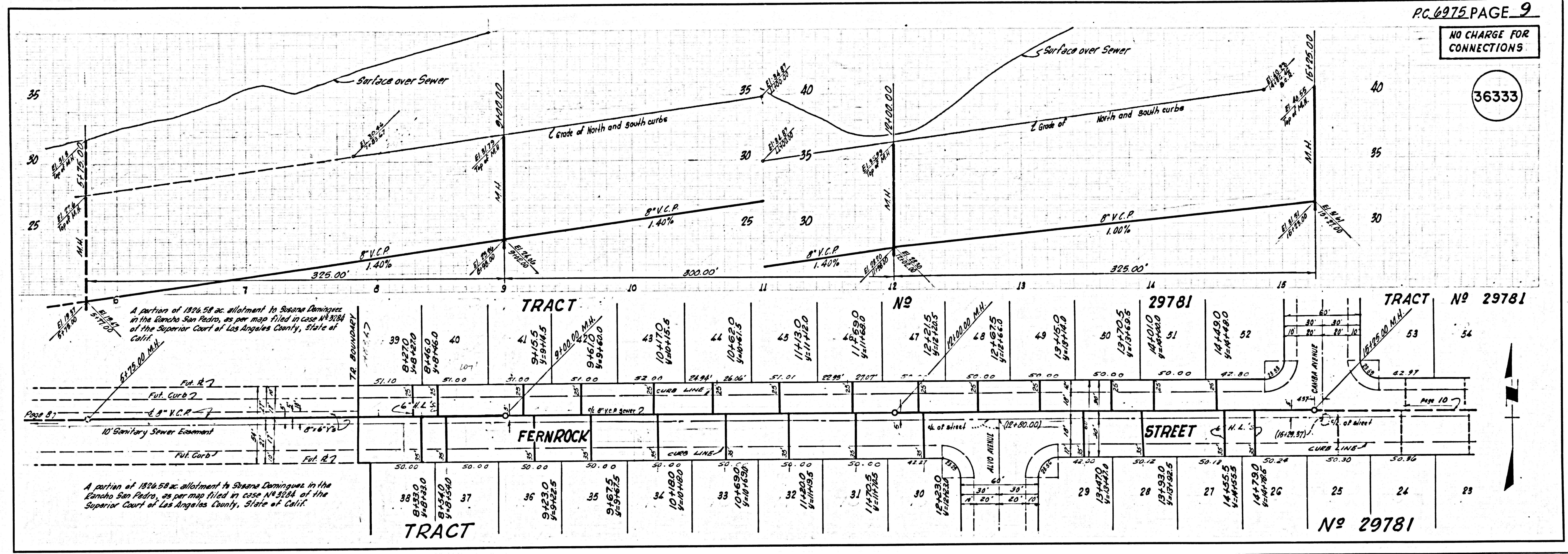






NO CHARGE FOR CONNECTIONS

36333



LA COUNTY SEWER SHEET NO. 6 WATERWORKS BLUEPRINT CO.

NO CHARGE FOR CONNECTIONS

36334

