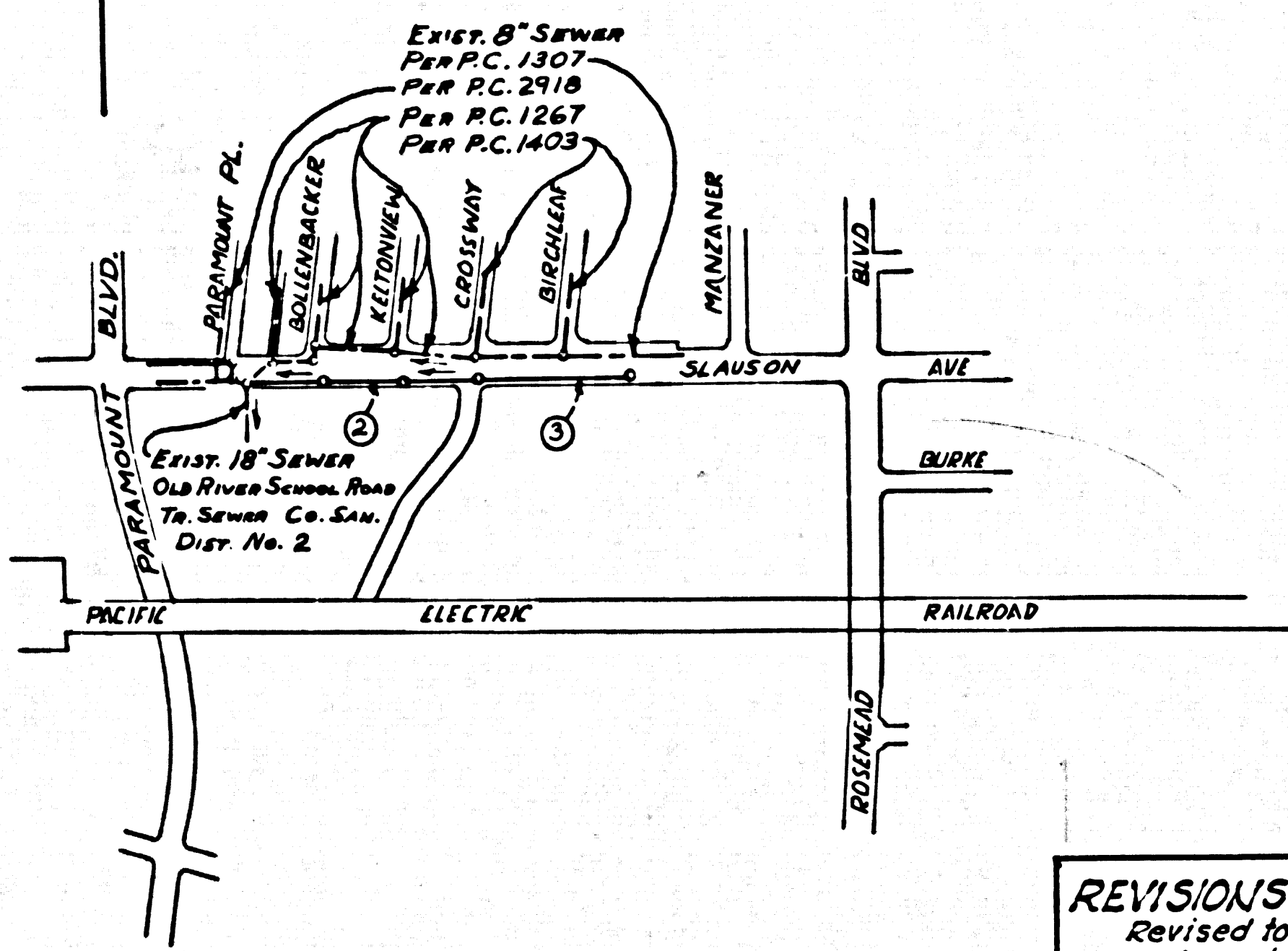


B.M. CITY OF PICO RIVER ELEV. 144.156  
 LEAD AND BK. RAIL IN NORTH CURB OF  
 SLAUSON AVE. 1 FT. EAST OF EAST EDGE  
 OF C.D. BETWEEN CROSSWAY DRIVE  
 AND BURNLEY AVE.



INDEX MAP  
 SCALE: 1" = 600'  
 PC 6976

**REVISIONS**  
 Revised to show encasement of 10" V.C.P. Sewer  
 under water main, from Station 8+53.98 to  
 Station 8+63.98.  
 Approved By: *[Signature]* Date: 10/24/64  
 Office of City Engineer

BEFORE BREAKING INTO ANY EXISTING STRUCTURE  
 AND BEFORE FINAL ACCEPTANCE OF THIS WORK,  
 COUNTY SANITATION DISTRICT (DU 4-1281) SHALL  
 BE NOTIFIED IN ORDER THAT REQUIRED INSPEC-  
 TION CAN BE MADE.

NO CONNECTIONS FOR THE DISPOSAL OF  
 INDUSTRIAL WASTES SHALL BE MADE TO  
 SEWERS SHOWN ON THESE DRAWINGS  
 WITHOUT WRITTEN PERMISSION FROM THE  
 CHIEF ENGINEER AND GENERAL MANAGER  
 OF THE COUNTY SANITATION DISTRICTS.

PICO RIVERA BLDG. DIST. NO. 11.01

- NOTES:
- PROVIDE STAKES ON THE PROPERTY LINE OR PROPERTY LINES PRODUCED AT RIGHT ANGLES TO THE SEWER LINE AT THE CENTER LINE OF EACH MANHOLE.
  - NO REPRESENTATIVE OF THE CITY ENGINEER WILL SURVEY OR LAY OUT ANY PORTION OF THE WORK.
  - THE PRIVATE ENGINEER SHALL FURNISH THE CITY ENGINEER WITH GRADE SHEETS AND STATIONING FOR ALL HOUSE LATERALS AND Y BRANCHES AND SHALL PROVIDE STAKES FOR THEM AT THEIR PROPER LOCATIONS WITH STATIONING PLAINLY MARKED. ALL HOUSE LATERALS SHALL BE CONSTRUCTED IN A STRAIGHT ALIGNMENT AT RIGHT ANGLES FROM THE MAIN LINE SEWER.
  - ANY CHANGE IN ALIGNMENT SHALL BE REQUESTED IN WRITING BY THE PRIVATE ENGINEER.
  - THE PRIVATE ENGINEER SHALL FURNISH THE HOUSE LATERAL DEPTH AT THE PROPERTY LINE BELOW THE TOP OF CURB ELEVATION FOR EACH HOUSE EXTERNAL ON THE GRADE SHEET.
  - NO REVISIONS SHALL BE MADE IN THESE PLANS WITHOUT THE APPROVAL OF THE COUNTY ENGINEER.
  - THE CONTRACTOR SHALL NOTIFY THE CONSTRUCTION DIVISION BY TELEPHONE, MADISON 9-4747, EXT. 8158, AT LEAST TWENTY-FOUR HOURS BEFORE STARTING ANY WORK UNDER THIS CONTRACT.
  - MANHOLES SHALL BE BACK SEWER STRUCTURES PER S-104. PRECAST CONCRETE MANHOLES PER S-135 OR S-173 MAY BE USED AS AN ALTERNATE IN LOCATIONS APPROVED BY THE CITY ENGINEER.
  - USE STANDARD MANHOLE FRAMES AND COVERS, S-4-107.
  - USE EXTRA STRENGTH PIPE, ALL PIPE IS STANDARD DEPTH EXCEPT AS NOTED.
  - USE MECHANICAL COMPRESSION JOINTS FOR ALL V.C.P. JOINTS PER SPEC., SECT. 34, 48 & 49.
  - IF A POWER POLE IS WITHIN THREE FEET OF THE SEWER, THE SEWER SHALL BE ENCASED, PER S-172, CASE III, TWO FEET ON EACH SIDE FROM THE POINT OF INTERFERENCE.
  - IF DURING THE COURSE OF CONSTRUCTION IT IS DETERMINED THAT THERE IS LESS THAN FOUR FEET OF COVER OVER THE TOP OF A MAIN LINE OR HOUSE LATERAL V.C.P. SEWER WHICH IS NOT INDICATED ON THE PLANS, THE PIPE SHALL BE ENCASED PER S-172, CASE III, UNLESS OTHERWISE APPROVED BY THE COUNTY ENGINEER.
  - HOUSE LATERALS TO BE CONSTRUCTED WITH INVERTS AT 1/4" RISE PER FOOT TO THE PROPERTY LINE.
  - RESURFACE ALL TRENCHES WITHIN PAVED AREAS TO MEET L.A. COUNTY ROAD DEPT. OR CALIFORNIA STATE HIGHWAY REQUIREMENTS IN ACCORDANCE WITH PERMITS.
  - FOR ALLOWABLE STAKE'S TEST USE FORMULA NO. 1, 2, 3, 4, 5, 6, 7, 8, 9, 10, 11, 12, 13, 14, 15, 16, 17, 18, 19, 20, 21, 22, 23, 24, 25, 26, 27, 28, 29, 30, 31, 32, 33, 34, 35, 36, 37, 38, 39, 40, 41, 42, 43, 44, 45, 46, 47, 48, 49, 50, 51, 52, 53, 54, 55, 56, 57, 58, 59, 60, 61, 62, 63, 64, 65, 66, 67, 68, 69, 70, 71, 72, 73, 74, 75, 76, 77, 78, 79, 80, 81, 82, 83, 84, 85, 86, 87, 88, 89, 90, 91, 92, 93, 94, 95, 96, 97, 98, 99, 100.
  - ALL STATE AND LOCAL TRENCH AND SAFETY ORDERS WILL BE RIGIDLY ENFORCED.

COLLECT CHARGES  
 AS INDICATED

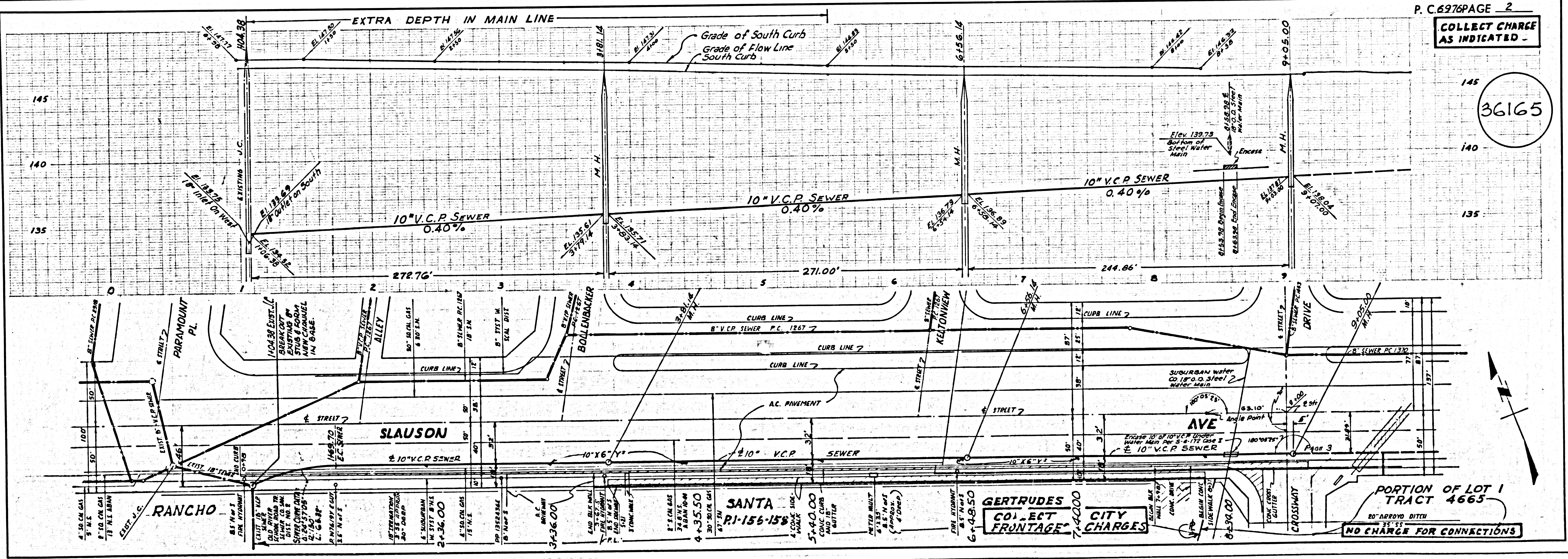
PROFILE ALIGNMENT AND GRADE OF P.C. 6976  
 SANITARY SEWERS PAGE 1  
 TO BE CONSTRUCTED IN  
 SLAUSON AVENUE

PRIVATE CONTRACT NO. 6976  
 W.S. 36  
 2 SHEETS, 3 PAGES  
 SCALE: VERT. 1" = 4' HORIZ. 1" = 40' MARCH 24, 1964  
 PREPARED IN THE OFFICES OF  
 TECHNOLOGICAL ENGINEERING CORPORATION  
 BY: *[Signature]*  
 REG. C. E. NO. 10410  
 FOR LEGEND SEE PLAN NO. S-4-64

NOTE:  
 GRADES TO WHICH THIS IMPROVEMENT IS TO BE CONSTRUCTED ARE SHOWN ON PLANS AND PROFILES. GRADE POINTS FOR TOP OF CURBS, CENTER LINE OF STREETS, OR CENTER LINE OF ALLEYS ARE SHOWN BY CIRCLES ON PROFILES AT ALL POINTS BETWEEN DESIGNATED POINTS. THE GRADE SHALL BE ESTABLISHED SO AS TO CONFORM TO A STRAIGHT LINE DRAWN BETWEEN SAID DESIGNATED POINTS. ELEVATIONS ARE IN FEET ABOVE U.S.C. & G.S. SEA LEVEL DATUM OF 1929.  
 THIS DRAWING AND THE DATA HEREON ARE HEREBY MADE A PART OF THE SPECIFICATIONS.  
 CITY ENGINEER AND SHALL BE PROSECUTED ONLY IN THE PRESENCE OF THE CITY ENGINEER.  
 BEFORE WORK CAN BE STARTED, THE CONTRACTOR MUST OBTAIN A PERMIT TO EXCAVATE IN CITY STREETS FROM THE L.A. COUNTY ROAD DEPT., DISTRICT OFFICE NO. 4, AND MAKE A DEPOSIT WITH THE CITY OF PICO RIVERA, 812 PARKSONS ROAD, PICO RIVERA, CALIFORNIA, SUFFICIENT TO COVER THE COST OF CONSTRUCTION INSPECTION AND RECORD PLANS.  
 APPROVAL OF THIS PLAN BY THE CITY OF PICO RIVERA DOES NOT CONSTITUTE A REPRESENTATION AS TO THE ACCURACY OF THE LOCATION OF OR THE EXISTENCE OR NON-EXISTENCE OF ANY UNDERGROUND UTILITY PIPE, OR STRUCTURE WITHIN THE LIMITS OF THIS PROJECT. THIS NOTE APPLIES TO ALL PAGES.  
 IF WORK IS TO BE DONE IN A STATE HIGHWAY, A PERMIT MUST BE OBTAINED FROM THE STATE OF CALIFORNIA, DIVISION OF HIGHWAYS, 126 SOUTH SPRING STREET, LOS ANGELES, CALIFORNIA.

CITY OF PICO RIVERA, CALIFORNIA  
 JOHN A. LAMBE, CITY ENGINEER J. D. PARKHURST, CHIEF ENGINEER  
 APPROVED BY: *[Signature]* ASSISTANT SANITATION ENGINEER APPROVED BY: *[Signature]* OFFICE ENGINEER  
 SUBMITTED BY: *[Signature]* 6-17-64  
 LOS CERRITOS REGIONAL ENGINEER ICE 3871  
 CHECKED BY: *[Signature]* REG. C. E. NO. 13878

36164

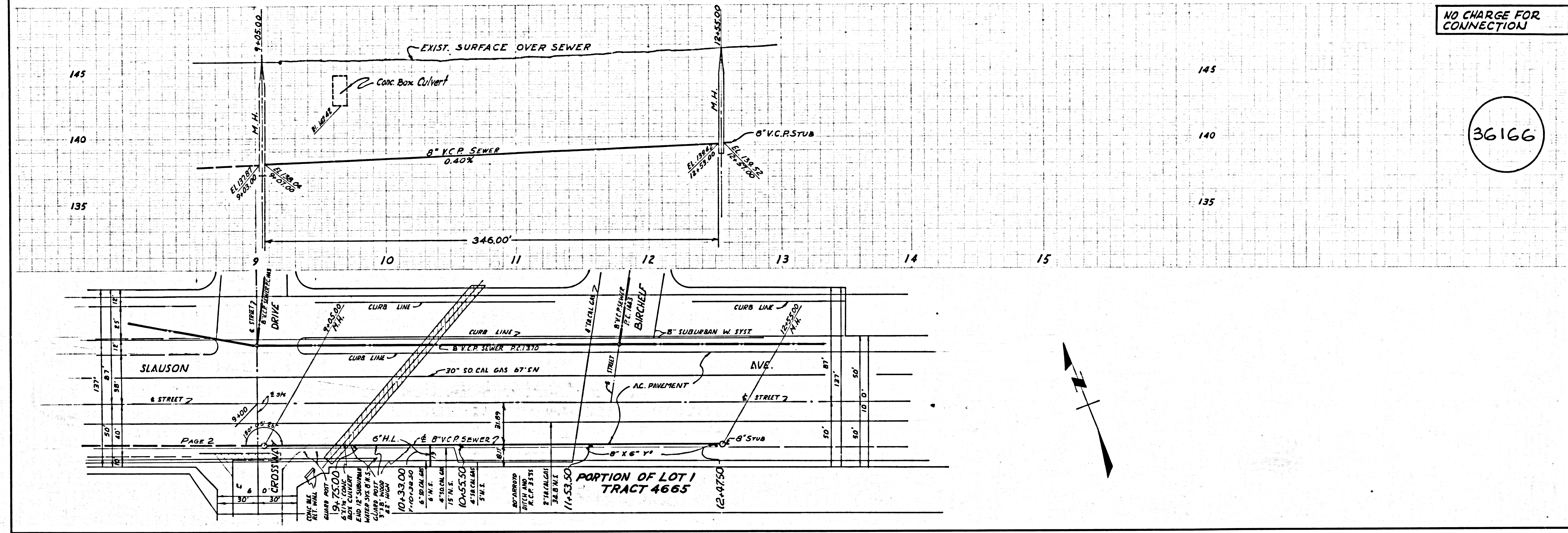


P.C. 6976 PAGE 2  
 COLLECT CHARGE  
 AS INDICATED

36165

NO CHARGE FOR CONNECTION

36166



144.77