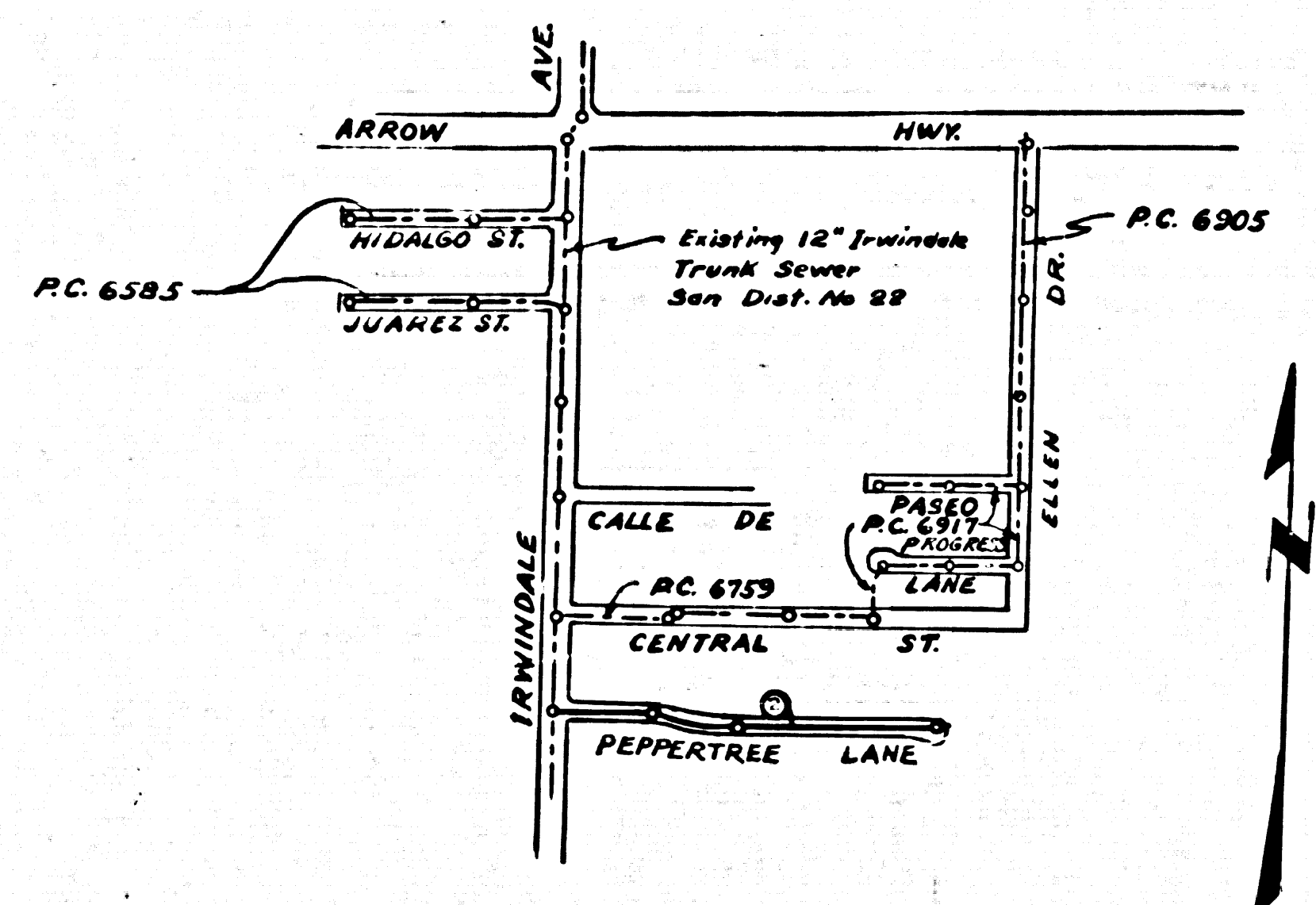


B.M. 1#1 ELEV. 454.783
 Central St. (N. Side) 155' E'ly of
 S of Irwindale Ave. L & T. in Cono.
 Walk to House # 16015
 County Engineer F.B. 1452-37



INDEX MAP

SCALE: 1" = 600'

Figure in Circle Indicates Page Number

NO CONNECTIONS FOR THE DISPOSAL OF
 DUSTRIAL WASTES SHALL BE MADE TO
 SEWERS SHOWN ON THESE DRAWINGS
 WITHOUT WRITTEN PERMISSION FROM THE
 CITY ENGINEER AND GENERAL MANAGER
 OF THE COUNTY SANITATION DISTRICTS.

BEFORE BREAKING INTO ANY EXISTING STRUCTURE
 AND BEFORE FINAL ACCEPTANCE OF THIS WORK,
 COUNTY SANITATION DISTRICT (DU 4-1281) SHALL
 BE NOTIFIED IN ORDER THAT REQUIRED INSPEC-
 TION CAN BE MADE.

IRWINDALE BUILDING DISTRICT No. 5.06

P.C. 6979
 PAGE 1

PRIVATE CONTRACT NO. 6979

PROFILE, ALIGNMENT AND GRADE OF
 SANITARY SEWERS
 TO BE CONSTRUCTED IN

PEPPERTREE LANE
 AND OTHER RIGHTS OF WAY

35010

1 SHEET, 2 PAGES

SCALE VERT. 1" = 4'
 HORIZ. 1" = 40'

MAY 1964

CITY OF IRWINDALE, CALIFORNIA

JOHN A. LAMBIE

CITY ENGINEER

APPROVED BY *Russell Kline*
 ASST. SANITATION ENGINEER

J. D. PARKHURST
 CHIEF ENGINEER OF COUNTY
 SANITATION DISTRICT NO. 2

RECOMMENDED BY *W.C. Sandt*
 REGIONAL ENGINEER

APPROVED BY *Edwin T. Powell*
 CITY MANAGER

DESIGNED BY *John A. Lambie*
 NO. C. E. NO. 7752

NOTES:
 WORK SHALL BE CONSTRUCTED ACCORDING TO STANDARD SPECIFICATIONS DATED May 25, 1962 ON FILE IN
 THE OFFICE OF THE COUNTY ENGINEER AND SHALL BE PROSECUTED ONLY IN THE PRESENCE OF THE COUNTY ENGINEER.
 GRADES TO WHICH THIS IMPROVEMENT IS TO BE CONSTRUCTED ARE SHOWN ON PLANS AND PROFILES. GRADE POINTS FOR TOP
 OF CURB, CENTER LINE OF STREET OR CENTER LINE OF ALLEY ARE SHOWN BY CIRCLES ON PROFILES AT ALL POINTS BETWEEN DESI-
 GNATED POINTS THE GRADE SHALL BE ESTABLISHED SO AS TO CONFORM TO A STRAIGHT LINE DRAWN BETWEEN SAID DESIGNATED
 POINTS.
 ELEVATIONS ARE IN FEET ABOVE U.S.C. & G.S. SEA LEVEL DATUM OF 1929.
 UNIT PRICES FOR ADDITIONAL WORK WHICH MAY BE REQUIRED BUT WHICH CANNOT BE ASCERTAINED IN ADVANCE, SHALL BE
 SUBMITTED IN THE PROPOSAL.
 THIS DRAWING AND THE DATA HEREON ARE HEREBY MADE A PART OF THE SPECIFICATIONS.

LAYOUT	McMillan	May 1964	UNDERGROUND	R.W. Staff	5-26-64
TRACED	McMillan	May 1964	BENCH MARKS	J.B.J.	5-26-64
CHECKED	DeJong	May 1964	MAINTENANCE		
F. B. 2198	169-172		INSPECTOR		
A. B.			RECORD PLANS	IV. Y. Ten	8-1-64

USE EXTRA STRENGTH PIPE, ALL PIPE IS STANDARD DEPTH EXCEPT AS NOTED.
 USE MECHANICAL COMPRESSION JOINTS FOR ALL VITRIFIED CLAY PIPE SEWERS PER SPEC. SECS. 34, 44, & 45.
 ALL STRUCTURES SHALL BE BRICK SEWER STRUCTURES AS PER PLAN NO. S-104, EXCEPT AS NOTED.
 USE STANDARD MANHOLE FRAMES AND COVERS AS PER PLAN NO. S-117, EXCEPT AS NOTED.
 USE FORMER NO. 2, SEC. 24 OF SPECIFICATIONS TO COMPUTE ALLOWABLE LEAKAGE.
 CONSTRUCT HOUSE LATERALS WITH INVERTS AT PROPERTY LINE & FEET BELOW CURB GRADE, OR GRADE OF CENTER LINE OF STREET,
 EXCEPT AS NOTED.
 HOUSES IN CURBLES AT ENDS OF HOUSE LATERALS INDICATE DEPTH BELOW CURB GRADE, OR GRADE OF CENTER LINE
 OF STREET.
 HOUSES IN CURBLES AT ENDS OF HOUSE LATERALS INDICATE DEPTH BELOW CURB GRADE, OR GRADE OF CENTER LINE
 OF STREET.
 WORDS IN CIRCLES AT ENDS OF HOUSE LATERALS INDICATE DEPTH BELOW CURB GRADE, OR GRADE OF CENTER LINE
 OF STREET.
 ALL HOUSE LATERALS SHALL BE CONSTRUCTED IN A STRAIGHT ALIGNMENT AT RIGHT ANGLES FROM THE MAIN LINE SEWER EXCEPT AS
 SHOWN ON THE PLANS. HOUSE LATERALS FROM CHIMNEYS SHALL NOT HAVE AN ANGLE OF LESS THAN 45 DEGREES WITH THE MAIN
 LINE SEWER.
 THE CONTRACTOR SHALL NOTIFY THE CONSTRUCTION DIVISION BY TELEPHONE MADISON 9-47, EXT. 81881 AT LEAST 24 HOURS BEFORE
 STARTING ANY WORK UNDER THIS CONTRACT.
 CONSTRUCTION IN STATE HIGHWAYS SHALL CONFORM WITH STATE HIGHWAY PERMIT AND THE CONTRACTOR SHALL PAY ALL COSTS
 OF CONNECTION THEREWITH.
 ALL STATE AND LOCAL TRENCH SAFETY ORDERS WILL BE RIGIDLY ENFORCED.
 RESURFACING SCHEDULE: RESURFACE TRENCH WITHIN PAVED AREA WITH PREMIER ROCK AND OIL 3 INCHES IN THICKNESS
 ON 2 INCHES OF AGGREGATE BASE MATERIALS, EXCEPT AS NOTED BELOW.

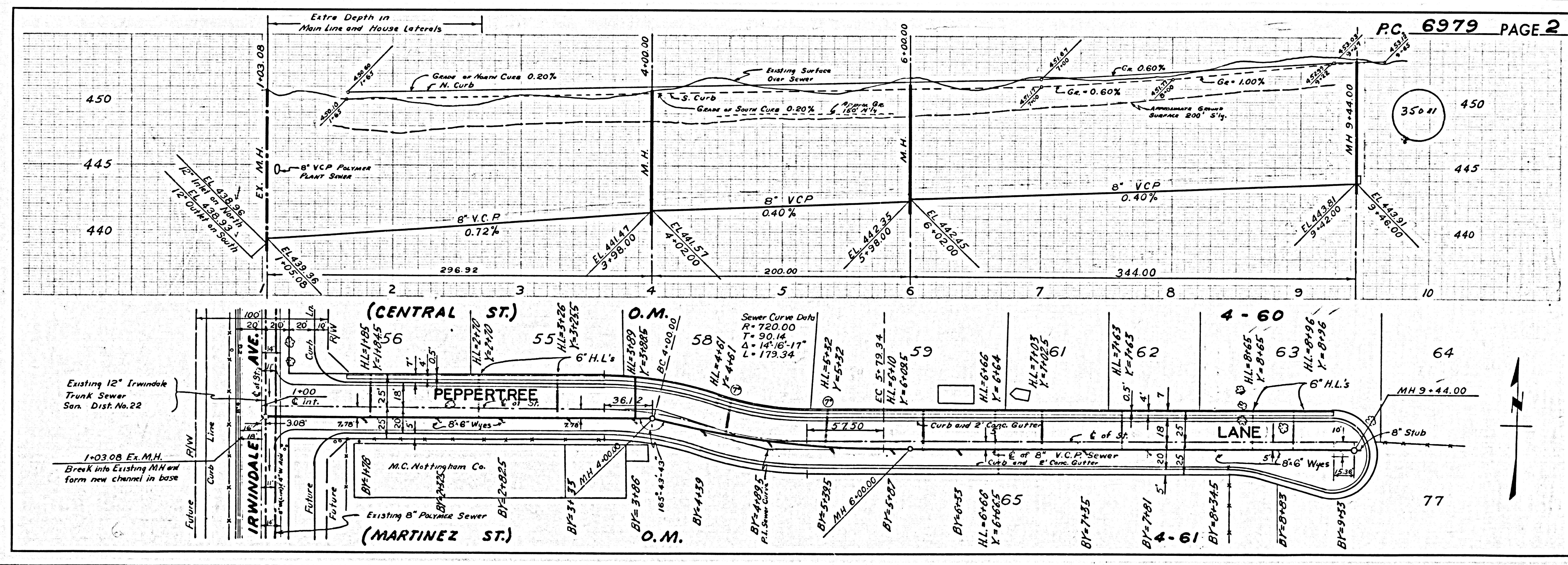
PAGE NO.	STREET	STATION LIMITS	TYPE OF RESURFACING
		FROM TO	
NO EXCEPTIONS			

ALL CONCRETE CROSS CURBS, CURBS, GUTTERS, PAVEMENT, AND DRYWELLS SHALL BE TUNNELED OR JACKED PER LOS ANGELES
 COUNTY ROAD DEPARTMENT REQUIREMENTS.
 THE FOLLOWING LATEST REVISED STANDARD PLANS ON FILE IN THE OFFICE OF COUNTY ENGINEER SHALL APPLY IN THE CONSTRUCTION
 OF THIS PROJECT:

STANDARD LEGEND	S-44
STANDARD BRICK SEWER STRUCTURE	S-104
STANDARD MANHOLE FRAME AND COVER	S-117
STANDARD MANHOLE STEPS	S-120
STANDARD STOPPER	S-120
STANDARD WYE SUPPORT	S-171
STANDARD SUPPORT AND PROTECTION OF SEWER PIPES	S-172
STANDARD BIDDING FOR SEWER PIPE	S-179
MINIMUM EXCAVATION SAFETY REQUIREMENTS	S-180

THE UNDERGROUND UTILITY COMPANIES WITHIN THE LIMITS OF THIS PROJECT ARE AS FOLLOWS:

- Bolton Park County Water District
- Southern Counties Gas Company
-
-



P.C. 6979 PAGE 2

35011