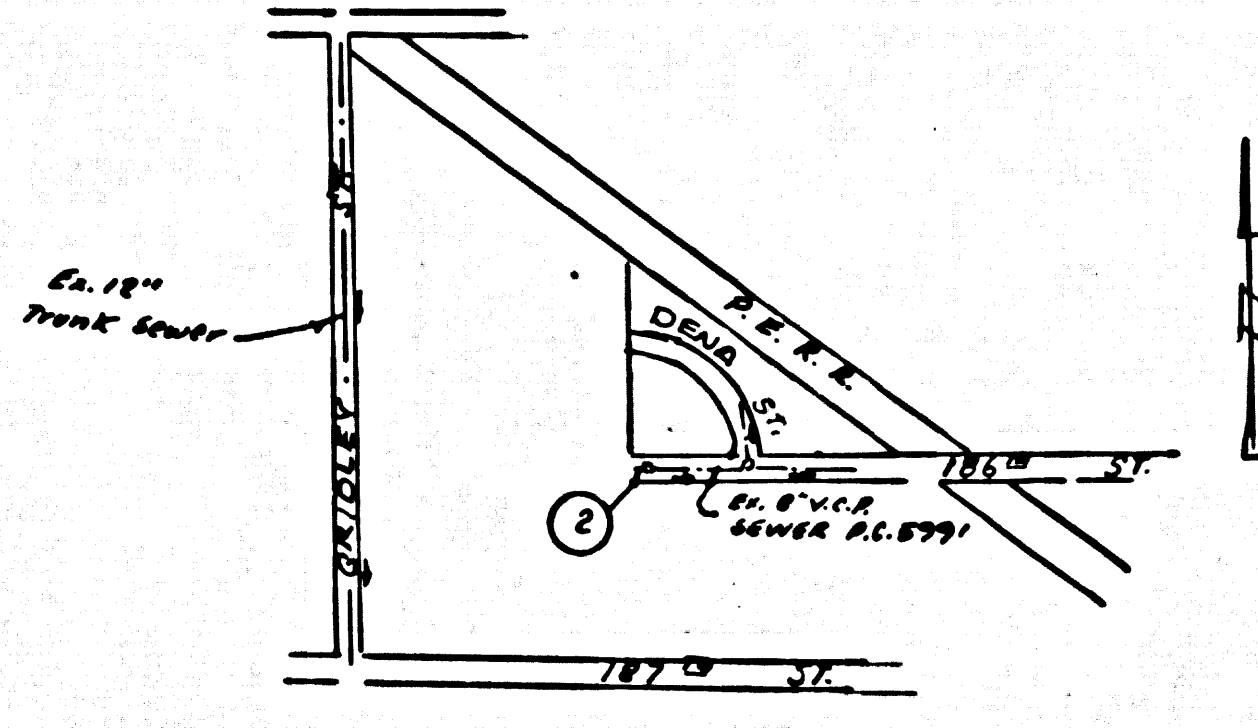


B.M. SY 3917 ELEV. 49.901
 2. FT. IN CURB RETURN @
 N.E. CORNER PIONEER BLVD
 & 186th ST.
 ARTESIA QUAD. 19 60



INDEX MAP
 P.C. 6984 SCALE 1"=600'

**PRIVATE ENGINEER'S
 NOTICE TO CONTRACTOR**

The address and location of any underground utility pipes or structures shown on these plans are advised by a search of the available records. To the best of our knowledge there are no existing utilities except as shown on this map. The Contractor is required to take due precautionary measures to protect the utility lines shown and any other utilities not shown or not shown on this drawing.

ARTESIA BLDG. DIST. NO. 409

- NOTE:
1. PROVIDE STAKES ON THE PROPERTY LINE OR PROPERTY LINES PRODUCED AT RIGHT ANGLES TO THE SEWER LINE AT THE CENTER LINE OF EACH MANHOLE.
 2. NO REPRESENTATIVE OF THE CITY ENGINEER WILL SURVEY OR LAY OUT ANY PORTION OF THE WORK.
 3. THE PRIVATE ENGINEER SHALL FURNISH THE CITY ENGINEER WITH GRADE SHEETS AND STATIONING FOR ALL HOUSE LATERALS AND Y BRANCHES AND SHALL PROVIDE STAKES FOR THEM AT THEIR PROPER LOCATIONS WITH STATIONING PLAINLY MARKED. ALL HOUSE LATERALS SHALL BE CONSTRUCTED IN A STRAIGHT ALIGNMENT AT RIGHT ANGLES FROM THE MAIN LINE SEWER EXCEPT AS SHOWN ON THE PLANS. HOUSE LATERALS FROM CHIMNEYS SHALL NOT HAVE AN ANGLE OF LESS THAN 45° WITH THE MAIN LINE SEWER. ANY CHANGE IN ALIGNMENT SHALL BE REQUESTED BY WRITING BY THE PRIVATE ENGINEER.
 4. THE PRIVATE ENGINEER SHALL FURNISH THE HOUSE LATERAL DEPTH AT THE PROPERTY LINE BELOW THE TOP OF CURB ELEVATION FOR EACH HOUSE LATERAL ON THE GRADE SHEET.
 5. NO REVISIONS SHALL BE MADE IN THESE PLANS WITHOUT THE APPROVAL OF THE CITY ENGINEER.
 6. THE CONTRACTOR SHALL NOTIFY THE CONSTRUCTION DIVISION BY TELEPHONE, MADISON 9-4747, EXT. 8153, AT LEAST TWENTY-FOUR HOURS BEFORE STARTING ANY WORK UNDER THIS CONTRACT.
 7. MANHOLES SHALL BE BRICK SEWER STRUCTURES PER S-104. PRECAST CONCRETE MANHOLES PER S-4-135 OR S-4-173 MAY BE USED AS AN ALTERNATE IN LOCATIONS APPROVED BY THE CITY ENGINEER.
 8. USE STANDARD MANHOLE FRAMES AND COVERS, S-107.
 9. MANHOLE TOPS IN UNIMPROVED RIGHTS-OF-WAY TO BE SIX INCHES ABOVE FINISHED GRADE.
 10. USE EXTRA STRENGTH PIPE. ALL PIPE IS STANDARD DEPTH.
 11. USE MECHANICAL COMPRESSION JOINTS FOR ALL V.C.P. JOINTS PER SPEC. SECT. 54, 48, 49.
 12. ~~UNLESS OTHERWISE SPECIFIED, ALL MANHOLES SHALL BE CONSTRUCTED WITH MECHANICAL COMPRESSION JOINTS PER SPEC. SECT. 54, 48, 49.~~
 13. IF A POWER POLE IS WITHIN THREE FEET OF THE SEWER, THE SEWER SHALL BE ENCASED, PER S-4-173, CASE III, TWO FEET ON EACH SIDE FROM THE POINT OF INTERFERENCE.
 14. IF DURING THE COURSE OF CONSTRUCTION IT IS DETERMINED THAT THERE IS LESS THAN FOUR FEET OF COVER OVER THE TOP OF A MAIN LINE OR HOUSE LATERAL V.C.P. SEWER WHICH IS NOT INDICATED ON THE PLANS, THE PIPE SHALL BE ENCASED PER S-4-173, CASE III, UNLESS OTHERWISE APPROVED BY THE CITY ENGINEER.
 15. HOUSE LATERALS TO BE CONSTRUCTED WITH 1/4" RISE PER FOOT TO PROPERTY LINE.
 16. RESURFACE ALL TRENCHES WITHIN PAVED AREAS TO MEET L.A. COUNTY ROAD DEPT. OR CALIFORNIA STATE HIGHWAY REQUIREMENTS IN ACCORDANCE WITH PERMITS.
 17. FOR ALLOWABLE LEAKAGE TEST USE FORMULA NO. 8, SPEC. SEC. 54.
 18. ALL STATE AND LOCAL TRENCH SAFETY ORDERS WILL BE RIGIDLY ENFORCED.

NO CONNECTIONS FOR THE DISPOSAL OF INDUSTRIAL WASTES SHALL BE MADE TO SEWERS SHOWN ON THESE DRAWINGS WITHOUT WRITTEN PERMISSION FROM THE CHIEF ENGINEER AND GENERAL MANAGER OF THE COUNTY SANITATION DISTRICTS.

COLLECT CHARGES AS INDICATED
[Signature]

PROFILE ALIGNMENT AND GRADE OF
SANITARY SEWERS P.C. 6984
 PAGE 1

TO BE CONSTRUCTED IN
186th ST.

PRIVATE CONTRACT NO. 6984

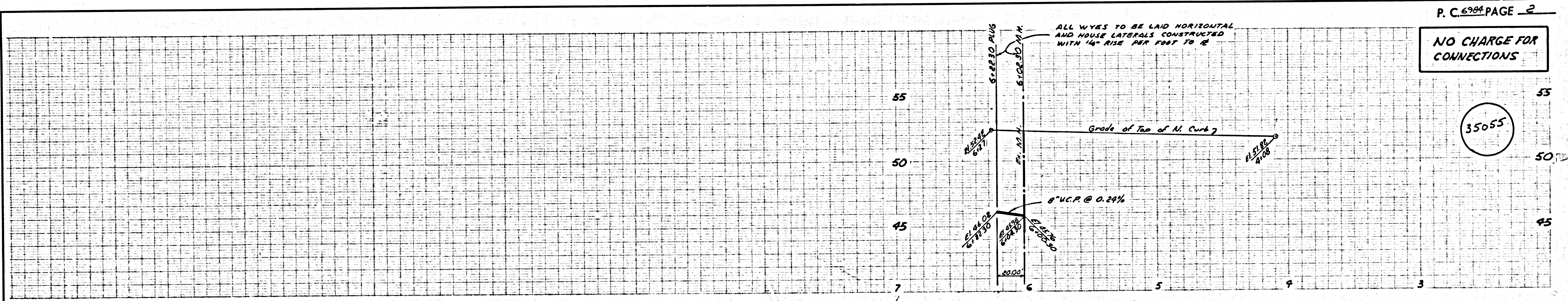
W.S. 39
 1 SHEET 2 PAGES
 SCALE: VERT. 1"=4'
 HORIZ. 1"=40' APRIL, 1964
 PREPARED IN THE OFFICES OF
OLSON SURVEYING SERVICE

35054

REG. C. E. NO. 7820
 FOR LEGEND SEE PLAN NO. S-4-64

NOTE:
 GRADES TO WHICH THIS IMPROVEMENT IS TO BE CONSTRUCTED ARE SHOWN ON PLANS AND PROFILES. GRADE POINTS FOR TOP OF CURBS, CENTER LINE OF STREETS, OR CENTER LINE OF ALLEYS ARE SHOWN BY CIRCLES ON PROFILES. AT ALL POINTS BETWEEN DESIGNATED POINTS THE GRADE SHALL BE ESTABLISHED SO AS TO CONFORM TO A STRAIGHT LINE DRAWN BETWEEN SAID DESIGNATED POINTS. ELEVATIONS ARE IN FEET ABOVE U.S.C. & G.S. SEA LEVEL DATUM OF 1929.
 THIS DRAWING AND THE DATA HEREON ARE HEREBY MADE A PART OF THE SPECIFICATIONS.
 WORK SHALL BE CONSTRUCTED ACCORDING TO STANDARD SPECIFICATIONS DATED 1957, 21, 1962 ON FILE IN THE OFFICE OF THE CITY ENGINEER AND SHALL BE PROSECUTED ONLY IN THE PRESENCE OF THE CITY ENGINEER.
 BEFORE WORK CAN BE STARTED, THE CONTRACTOR MUST OBTAIN A PERMIT TO EXCAVATE BY THE CITY OF ARTESIA, 1815 S. PIONEER BLVD., ARTESIA, CALIF. IN ACCORDANCE WITH THE CITY OF ARTESIA SUBORDINATE TO CODES THE COST OF CONSTRUCTION INSPECTION AND RECORD PLANS.
 APPROVAL OF THE PLAN BY THE CITY ENGINEER DOES NOT CONSTITUTE A REPRESENTATION AS TO THE ACCURACY OF THE LOCATION OR OF THE EXISTENCE OR NON-EXISTENCE OF ANY UNDERGROUND UTILITY PIPE, OR STRUCTURE WITHIN THE LIMITS OF THIS PROJECT. THIS NOTE APPLIES TO ALL PAGES.
 IF WORK IS TO BE DONE IN A STATE HIGHWAY, A PERMIT MUST BE OBTAINED FROM THE STATE OF CALIFORNIA, DIVISION OF HIGHWAYS, 198 SOUTH SPRING STREET, LOS ANGELES, CALIFORNIA.

CITY OF ARTESIA, CALIFORNIA
 JOHN A. LAMBIE, CITY ENGINEER
 J. D. PARKHURST, CHIEF ENGINEER
 CO. SAN. DIST. NO. 719
 APPROVED BY *[Signature]* ASSISTANT SANITATION ENGINEER
 APPROVED BY *[Signature]* OFFICE ENGINEER
 SUBMITTED BY *[Signature]* 6-9-64
 LOS ANGELES REGIONAL ENGINEER REG. C.E. NO. 2871
 CHECKED BY *[Signature]*
 REG. C.E. NO. 13279



P. C. 6984 PAGE 2
NO CHARGE FOR CONNECTIONS

35055

NO CONNECTIONS ALLOWED WEST OF THIS LINE. MAIN LINE MUST BE EXTENDED

