

B.M. SY. 5811 ELEV. 20.456
 L.A. City Man. in Well 10'
 Down @ Int. Sepulveda &
 Figueroa.
 GARDENA QUAD. 1960 Adj.

REVISION 2578 10-17-63
 Page 2. Removed line from Sta. 6+30
 to Sta. 7+87.33
 Changed line from 10" V.C.P. to
 8" V.C.P.
 Changed grade from 0.20%
 to 0.24%

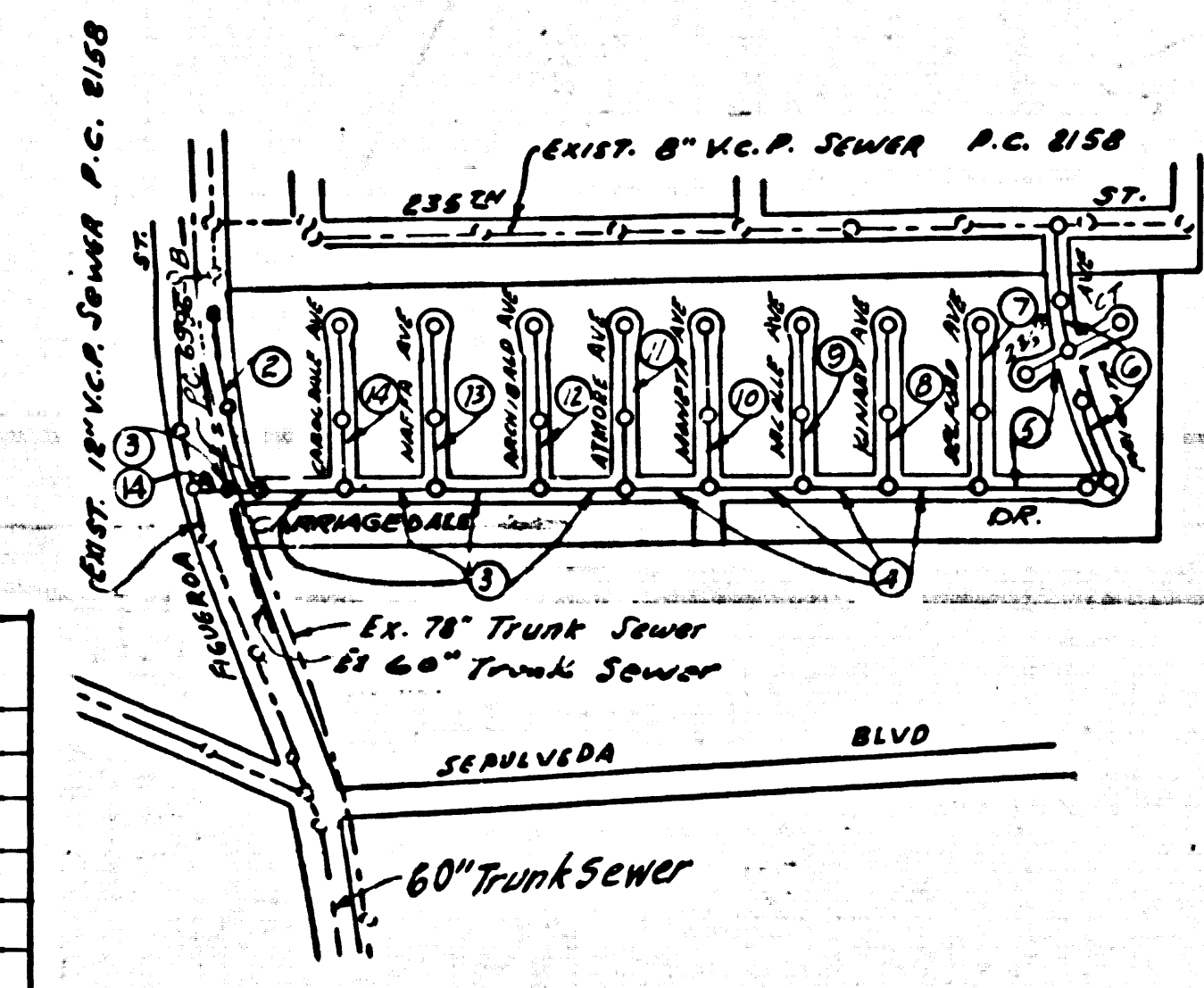
Revision Date: 12-7-65
 10" V.C.P. Sewer on Figueroa St.
 Page 2 changed to P.C. 6996-B
 APPROVED: *Edward J. Valdez*
 R.C.E. No. 10653

LOMITA BLDG. DIST. NO. 12

PROFILE ALIGNMENT AND GRADE OF P.C. 6996
 SANITARY SEWERS PAGE 1
 TO BE CONSTRUCTED IN

TRACT No. 29434
 PRIVATE CONTRACT NO. 6996-B
 W.S. 28
 7 SHEETS, 14 PAGES
 37170
 SCALE: 1" = 40' JUNE, 1964
 PREPARED IN THE OFFICES OF
 E.L. PEARSON & ASSOC., INC.
 BY: *Edward J. Valdez*
 REG. C.E. NO. 7783

REVISION DATE: JULY 8, 1965
 REPLACE PROPOSED SIPHON WITH 12" C.I.P. ON PAGE
 3 AND VOID DETAILS OF PROPOSED SIPHON ON PAGES 13
 & 14.
 APPROVED BY: *Edward J. Valdez*
 R.C.E. No. 10653
 APPROVED BY: *William J. Lambie*
 CO. SAN. DIST. NO. 8 OFFICE ENGINEER
 APPROVED BY: *Robert E. K... 7-9-65*
 ASST. DIVISION ENGINEER, SANITATION DIVISION
 OFFICE OF COUNTY ENGINEER



REVISION
 1 Deleted 12" Outlet Pipe at
 Figueroa St. 2-15-65
 2 Sewer outlet connected to P.C. 6151 Page 3
 & changed sewer grades Pages 10, 11, 12.
 Approved: *Edward J. Valdez*
 R.C.E. No. 10653

- NOTES:
1. PROVIDE STAKES ON THE PROPERTY LINE OR PROPERTY LINES PRODUCED AT RIGHT ANGLES TO THE SEWER LINE AT THE CENTER LINE OF EACH MANHOLE.
 2. NO REPRESENTATIVE OF THE COUNTY ENGINEER WILL SURVEY OR LAY OUT ANY PORTION OF THE WORK.
 3. THE PRIVATE ENGINEER SHALL FURNISH THE COUNTY ENGINEER WITH GRADE SHEETS AND STATIONINGS FOR ALL HOUSE LATERALS AND TRUNKS AND SHALL PROVIDE STAKES FOR THEM AT THEIR PROPER LOCATIONS WITH STATIONINGS PLAINLY MARKED. ALL HOUSE LATERALS SHALL BE CONSTRUCTED IN A STRAIGHT ALIGNMENT AT RIGHT ANGLES FROM THE MAIN LINE SEWER EXCEPT AS SHOWN ON THE PLANS. HOUSE LATERALS FROM CHIMNEYS SHALL NOT HAVE AN ANGLE OF LESS THAN 45° WITH THE MAIN LINE SEWER. ANY CHANGE IN ALIGNMENT SHALL BE REQUESTED IN WRITING BY THE PRIVATE ENGINEER.
 4. THE PRIVATE ENGINEER SHALL FURNISH THE HOUSE LATERAL DEPTH AT THE PROPERTY LINE BELOW THE TOP OF CURB ELEVATION FOR EACH HOUSE LATERAL ON THE GRADE SHEET.
 5. NO REVISIONS SHALL BE MADE IN THESE PLANS WITHOUT THE APPROVAL OF THE COUNTY ENGINEER.
 6. THE CONTRACTOR SHALL NOTIFY THE CONSTRUCTION DIVISION BY TELEPHONE, MADISON 9-4747, EXT. 8158, AT LEAST TWENTY-FOUR HOURS BEFORE STARTING ANY WORK UNDER THIS CONTRACT.
 7. MANHOLES SHALL BE BRICK SEWER STRUCTURES PER S-174. PRECAST CONCRETE MANHOLES PER S-115 OR S-173 MAY BE USED AS AN ALTERNATE IN LOCATIONS APPROVED BY THE COUNTY ENGINEER.
 8. USE STANDARD MANHOLE FRAMES AND COVERS, S-107, EXCEPT AS NOTED.
 9. MANHOLE TOPS IN UNIMPROVED RIGHTS-OF-WAY TO BE SIX INCHES ABOVE FINISHED GRADE.
 10. USE EXTRA STRENGTH PIPE. ALL PIPE IS STANDARD DEPTH EXCEPT AS NOTED.
 11. USE MECHANICAL COMPRESSION JOINTS FOR ALL V.C.P. JOINTS PER SPECS. SECS. 36 & 41.41.
 12. ALL STATE AND LOCAL TRENCH SAFETY ORDINANCES WILL BE RIGIDLY ENFORCED.
 13. IF A POWER POLE IS WITHIN THREE FEET OF THE SEWER, THE SEWER SHALL BE ENCASED, PER S-173, CASE III, TWO FEET ON EITHER SIDE FROM THE POINT OF INTERFERENCE.
 14. IF DURING THE COURSE OF CONSTRUCTION IT IS DETERMINED THAT THERE IS LESS THAN FOUR FEET OF COVER OVER THE TOP OF A MAIN LINE OR HOUSE LATERAL V.C.P. SEWER WHICH IS NOT INDICATED ON THE PLANS, THE PIPE SHALL BE ENCASED PER S-173, CASE III, UNLESS OTHERWISE APPROVED BY THE COUNTY ENGINEER.
 15. HOUSE LATERALS TO BE CONSTRUCTED WITH INVERTS AT PROPERTY LINE ... 6" FEET BELOW CURB GRADE EXCEPT AS NOTED.
 16. RESURFACE ALL TRENCHES WITHIN PAVED AREAS TO MEET L.A. COUNTY ROAD DEPT. OR CALIFORNIA STATE HIGHWAY REQUIREMENTS IN ACCORDANCE WITH PERMITS.
 17. FOR ALLOWABLE LEAKAGE TEST USE FOSHUKA NO. 1, SPECS. SEC. 54.
 18. CONSTRUCTION IN FILLED AREAS
 (A) AN ACCEPTABLE CERTIFICATION OF COMPACTION TEST RESULTS SHALL BE SUBMITTED TO THE CONSTRUCTION DIVISION. CONSTRUCTION TESTS ARE TO BE MADE IN ACCORDANCE WITH A S.T.M. STANDARD METHOD OF TEST D-630-62T.
 (B) NO CONSTRUCTION IS PERMITTED IN FILLED AREAS WHEN THE RELATIVE DENSITY OF COMPACTION IS LESS THAN 90%.
 (C) IF THE RELATIVE DENSITY OF COMPACTION IS LESS THAN 90% ALL MAIN LINE & HOUSE LATERALS SHALL BE ENCASED PER S-173 CASE III. SPECIAL M.H. BASES PER SPECS. ARE REQUIRED.
 (D) IF THE RELATIVE DENSITY OF COMPACTION IS 90% OR GREATER THE SPECIAL PROVISIONS IN (C) ARE NOT REQUIRED.

NOTE:
 GRADES TO WHICH THIS IMPROVEMENT IS TO BE CONSTRUCTED ARE SHOWN ON PLANS AND PROFILES. GRADE POINTS FOR TOP OF CURBS, CENTER LINE OF STREETS, OR CENTER LINE OF ALLEYS ARE SHOWN BY CIRCLES ON PROFILES. AT ALL POINTS BETWEEN DESIGNATED POINTS THE GRADE SHALL BE ESTABLISHED SO AS TO CONFORM TO A STRAIGHT LINE DRAWN BETWEEN SAID DESIGNATED POINTS. ELEVATIONS ARE IN FEET ABOVE U.S.C. & G.S. MEAN SEA LEVEL DATUM OF 1929. THIS DRAWING AND THE DATA HEREON ARE HEREBY MADE A PART OF THE SPECIFICATIONS. WORK SHALL BE CONSTRUCTED ACCORDING TO STANDARD SPECIFICATIONS DATED FEBRUARY 23, 1962 ON FILE IN THE OFFICE OF THE COUNTY ENGINEER AND SHALL BE PROSECUTED ONLY IN THE PRESENCE OF THE COUNTY ENGINEER. BEFORE WORK CAN BE STARTED, THE CONTRACTOR MUST OBTAIN A PERMIT TO EXCAVATE IN COUNTY STREETS FROM THE L.A. COUNTY ROAD DEPT., DISTRICT OFFICE NO. 7, AND PAY A FEE TO THE COUNTY ENGINEER, ROOM 302, COUNTY ENGINEERING BUILDING, 100 WEST SECOND STREET, LOS ANGELES, CALIFORNIA 90012. REGIONAL OFFICE, SUFFICIENT TO COVER THE COST OF CONSTRUCTION INSPECTION AND RECORD PLANS. APPROVAL OF THIS PLAN BY THE COUNTY OF LOS ANGELES DOES NOT CONSTITUTE A REPRESENTATION AS TO THE ACCURACY OF THE LOCATION OF OR THE EXISTENCE OR NON-EXISTENCE OF ANY UNDERGROUND UTILITY PIPE, OR STRUCTURE WITHIN THE LIMITS OF THIS PROJECT. THIS NOTE APPLIES TO ALL PAGES. IF WORK IS TO BE DONE IN A STATE HIGHWAY, A PERMIT MUST BE OBTAINED FROM THE STATE OF CALIFORNIA, DIVISION OF HIGHWAYS, 120 SOUTH STRENGTH STREET, LOS ANGELES, CALIFORNIA.

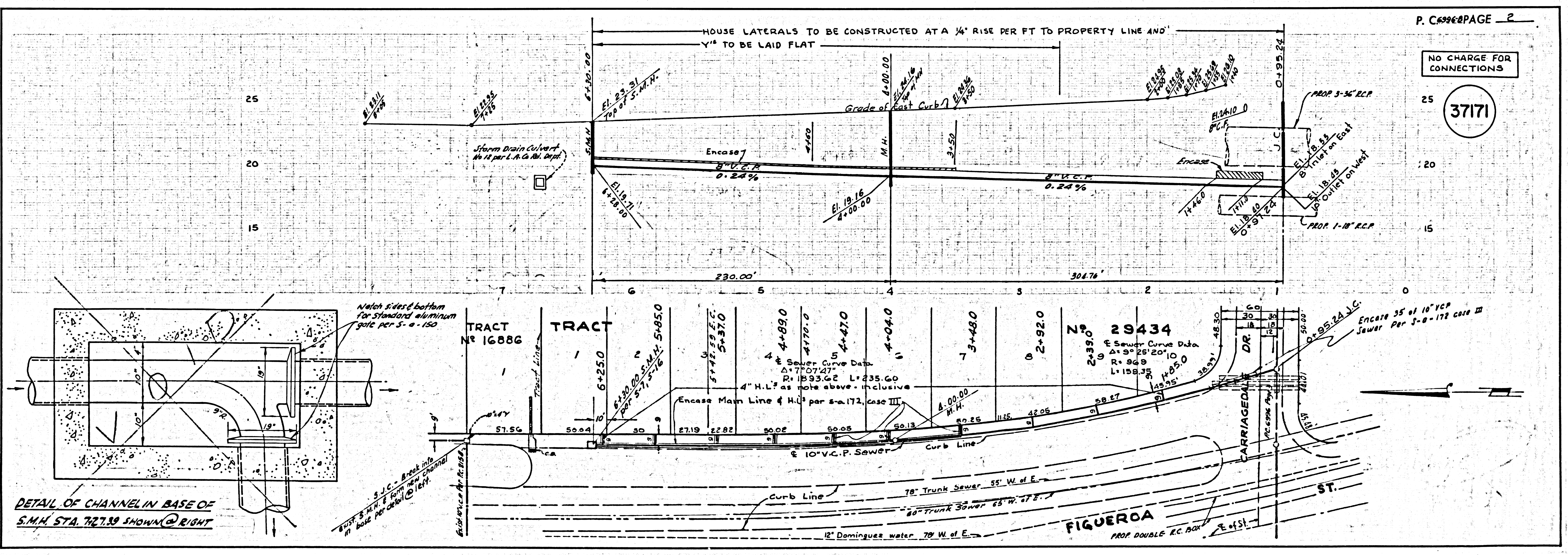
COUNTY OF LOS ANGELES, CALIFORNIA
 JOHN A. LAMBIE, COUNTY ENGINEER J. D. PARKHURST, CHIEF ENGINEER
 APPROVED BY: *Robert E. K...* ASSTANT SANITATION ENGINEER
 APPROVED BY: *William J. Lambie* OFFICE ENGINEER
 SUBMITTED BY: *Jack Coatsworth* REGIONAL ENGINEER
 CHECKED BY: *Edward J. Valdez* REG. C.E. NO. 10653
 J.N. 0363.23

COLLECT CHARGES AS INDICATED
Edward J. Valdez 1/25/64

NO CONNECTIONS FOR THE DISPOSAL OF INDUSTRIAL WASTES SHALL BE MADE TO SEWERS SHOWN ON THESE DRAWINGS WITHOUT WRITTEN PERMISSION FROM THE CHIEF ENGINEER AND GENERAL MANAGER OF THE COUNTY SANITATION DISTRICTS.

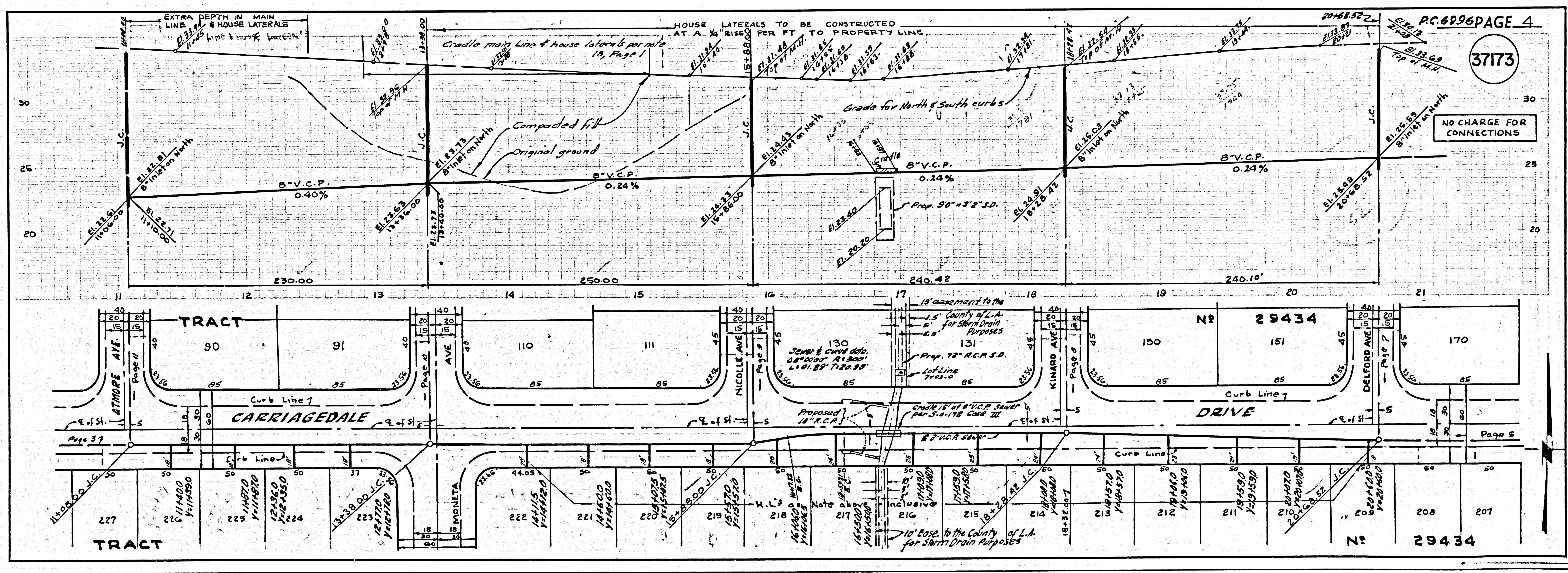
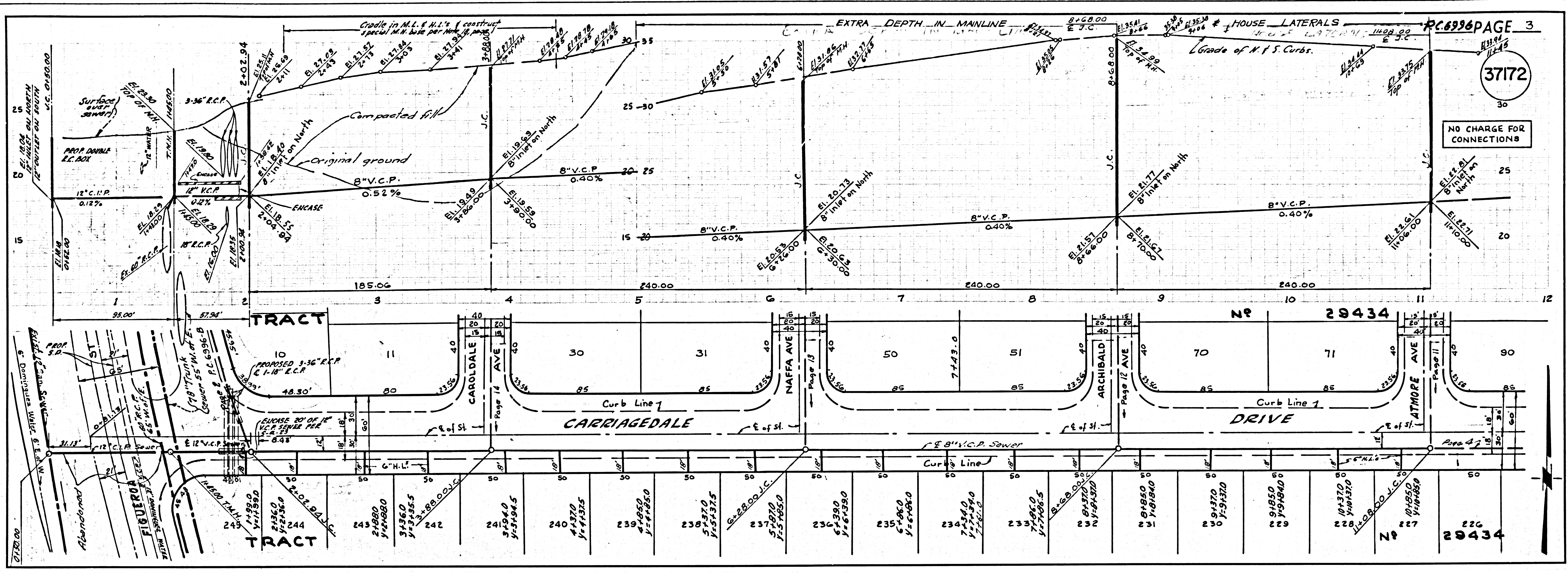
- REVISIONS:
 1. Relocation of Storm Drain Channel & Catch Basin lateral, Pages 2, 3, 14
 2. Revised Siphon, Pages 3, 14
 3. Revised Detail of Storm M.H. Sta. 1+00.00, Pages 3, 12, 13, 14
 4. Revised Road Grades, Pages 3, 4, 5a, 5b, 7, 8, 11, 12, 14
 5. Revised Sewer Alignment, Page 4
 6. Revised Sewer Grades, Page 13
 7. Revised Stationing, Pages 4, 5c, 6
 8. Deleted Note "Construct M.H. @ 1/4" Rise per foot in Property Line, Page 9, 10
 9. Increased Extra Depth M.H. @ H.L., Footage, Pages 11 & 12.
 APPROVED: *Edward J. Valdez*
 R.C.E. No. 10653

INDEX MAP
 TRACT NO. 29434
 P.C. 6996 Scale: 1" = 600'



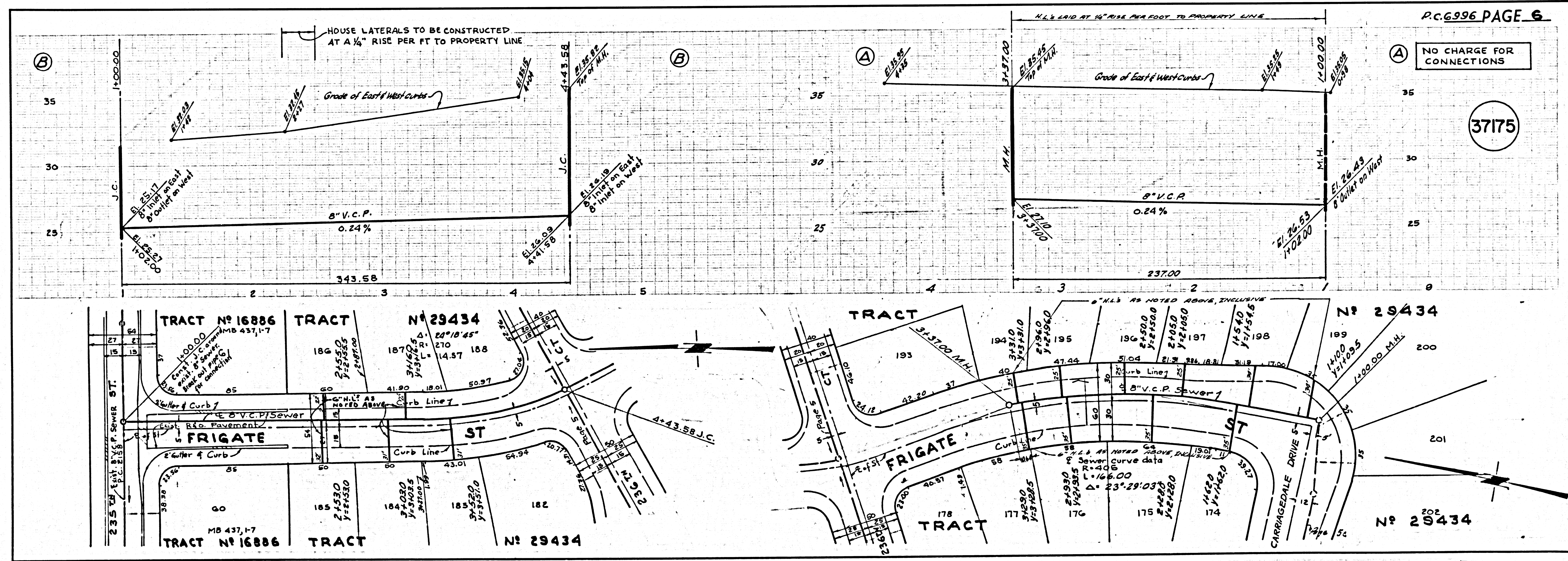
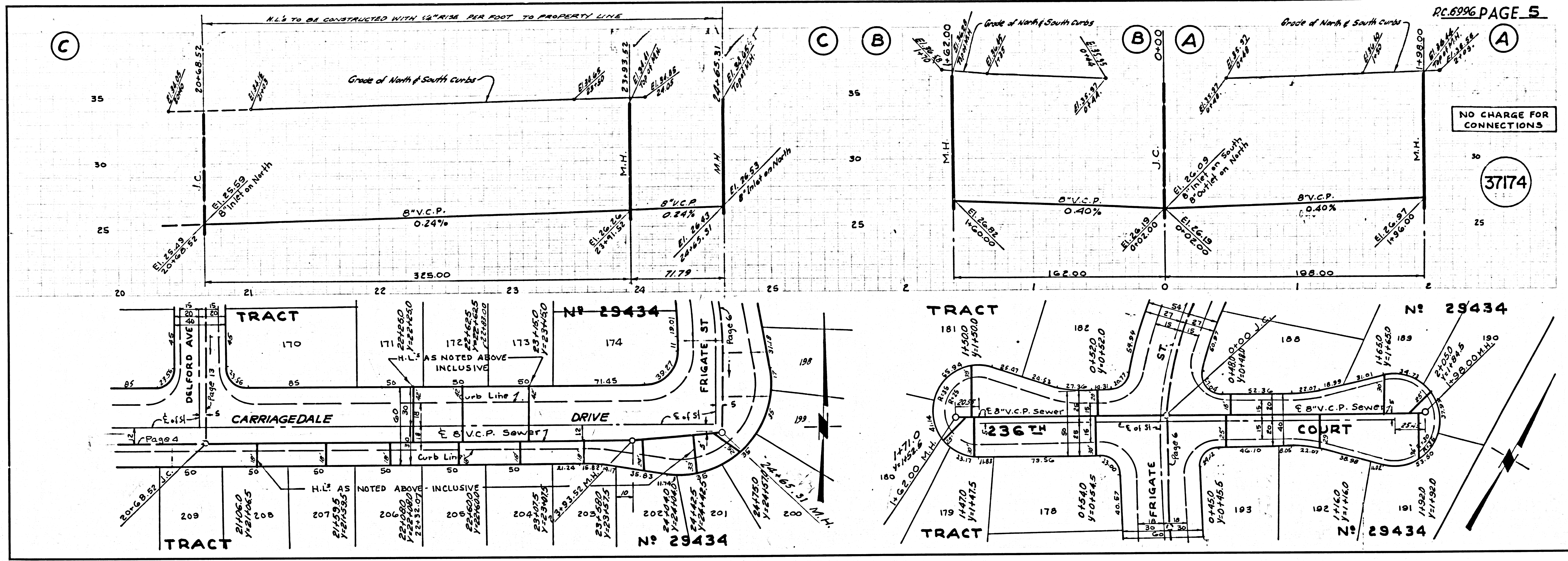
DETAIL OF CHANNEL IN BASE OF S.M.H. STA. 7+27.33 SHOWN @ RIGHT

P.C. 6996 PAGE 2
 NO CHARGE FOR CONNECTIONS
 37171



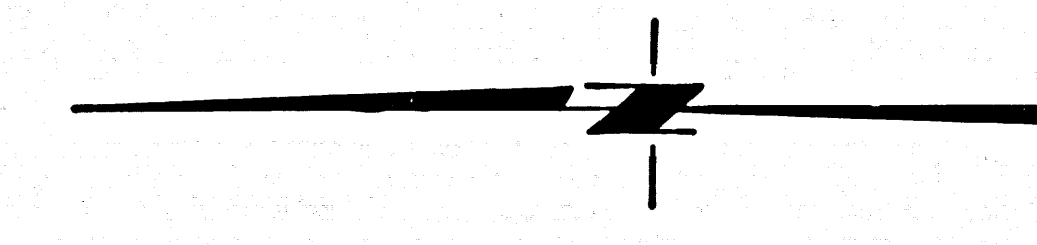
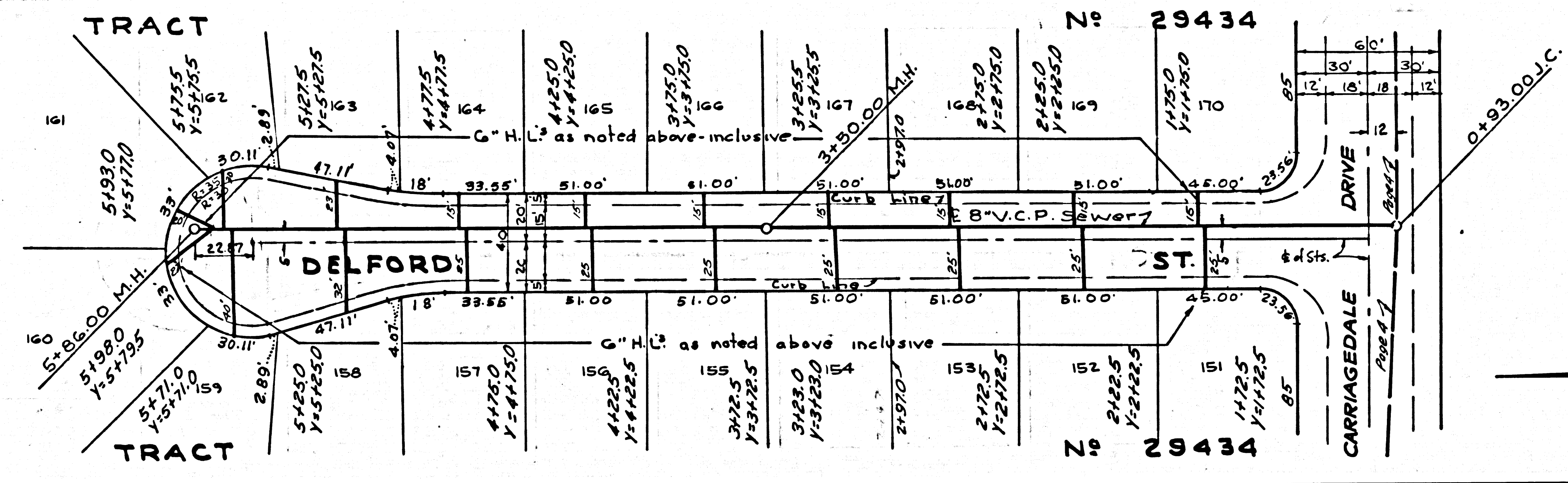
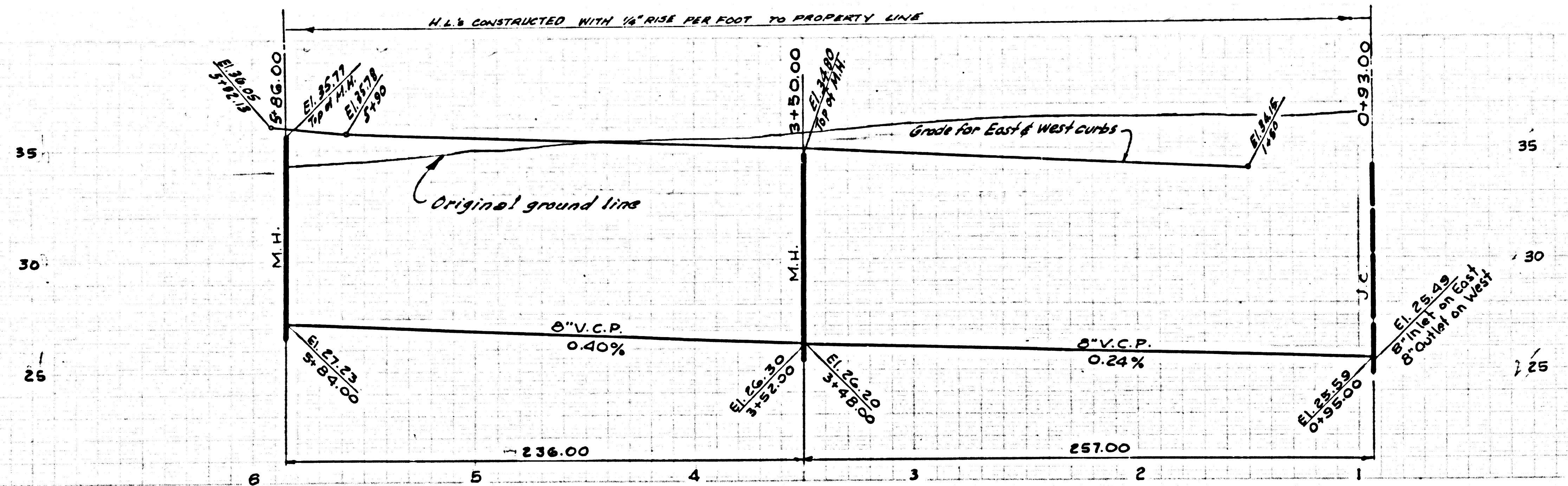
5338

1906



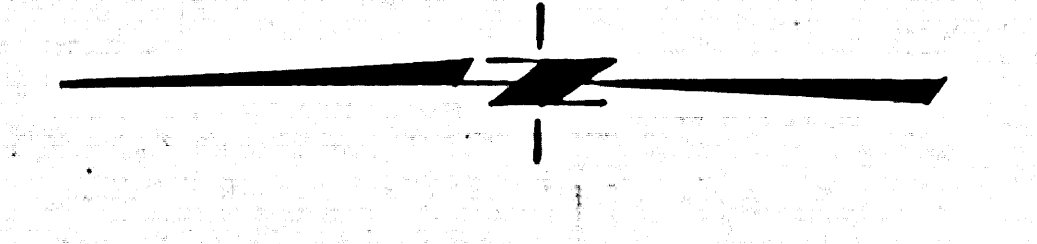
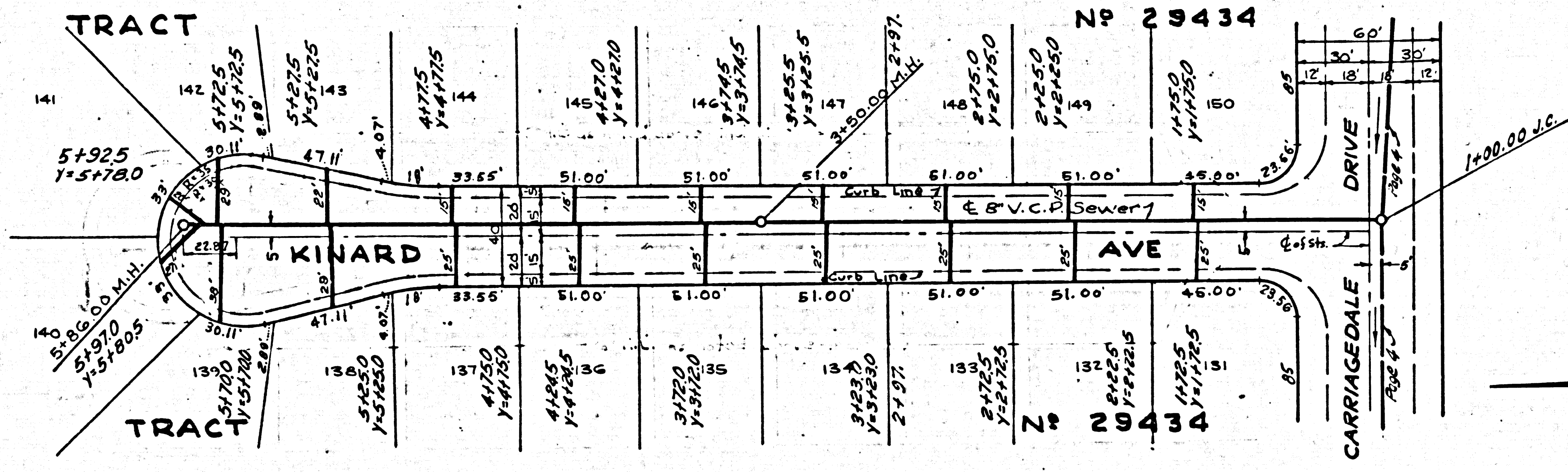
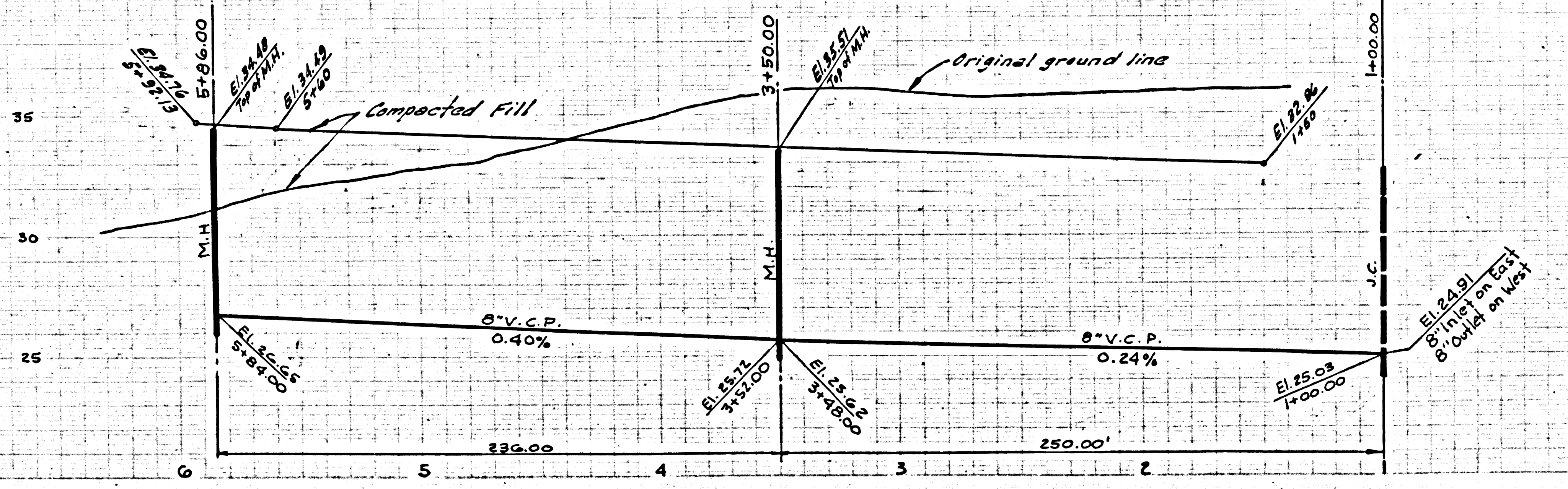
NO CHARGE FOR CONNECTIONS

37176



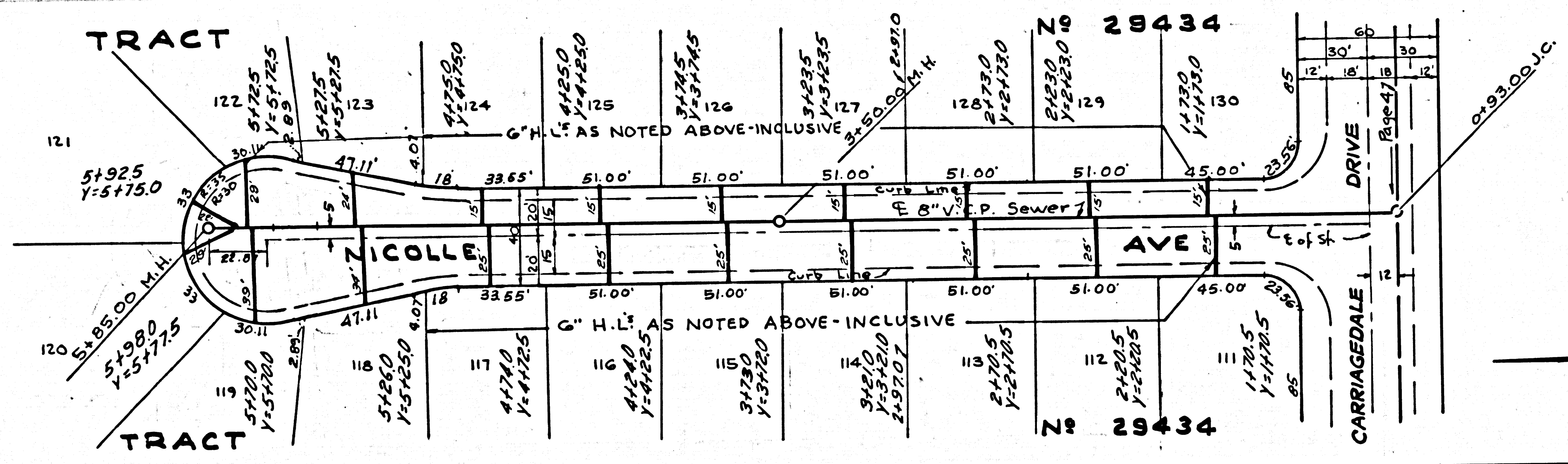
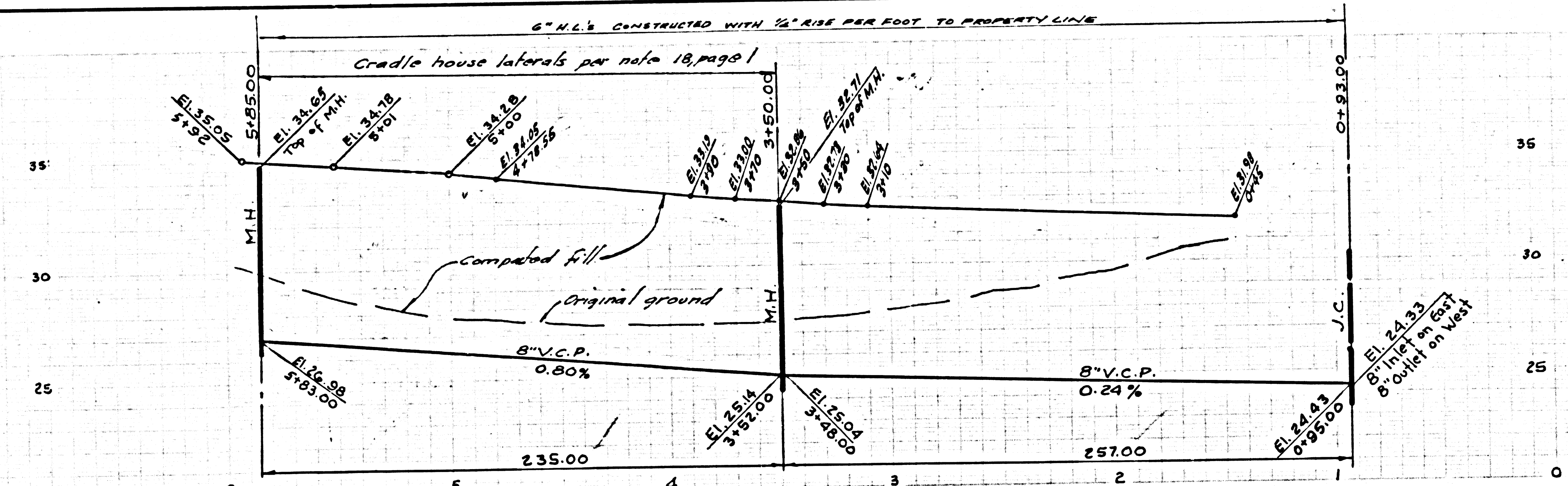
NO CHARGE FOR CONNECTIONS

37177



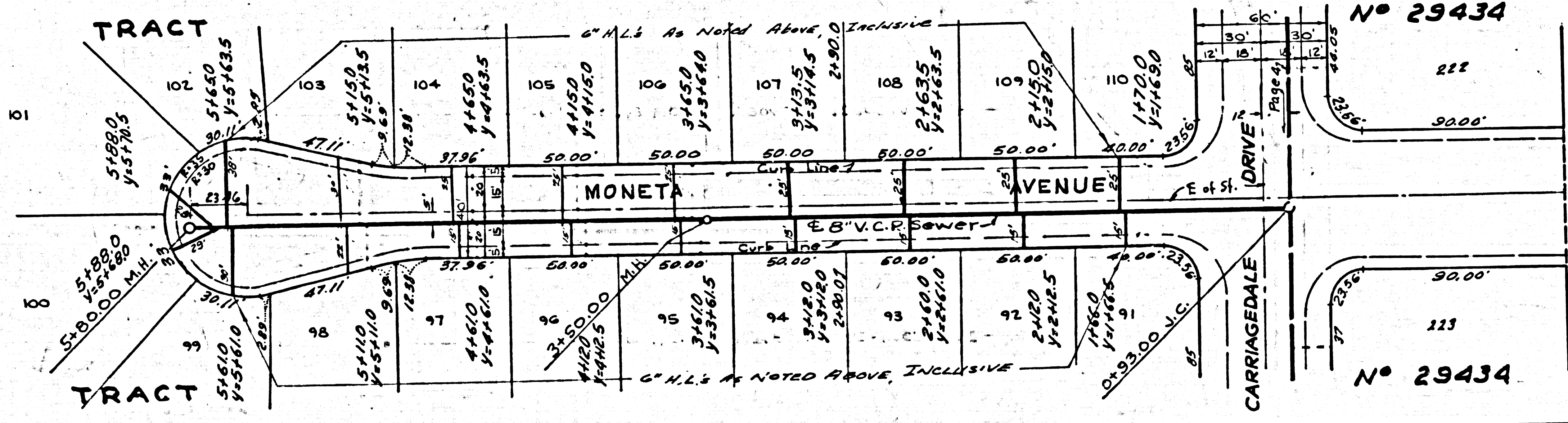
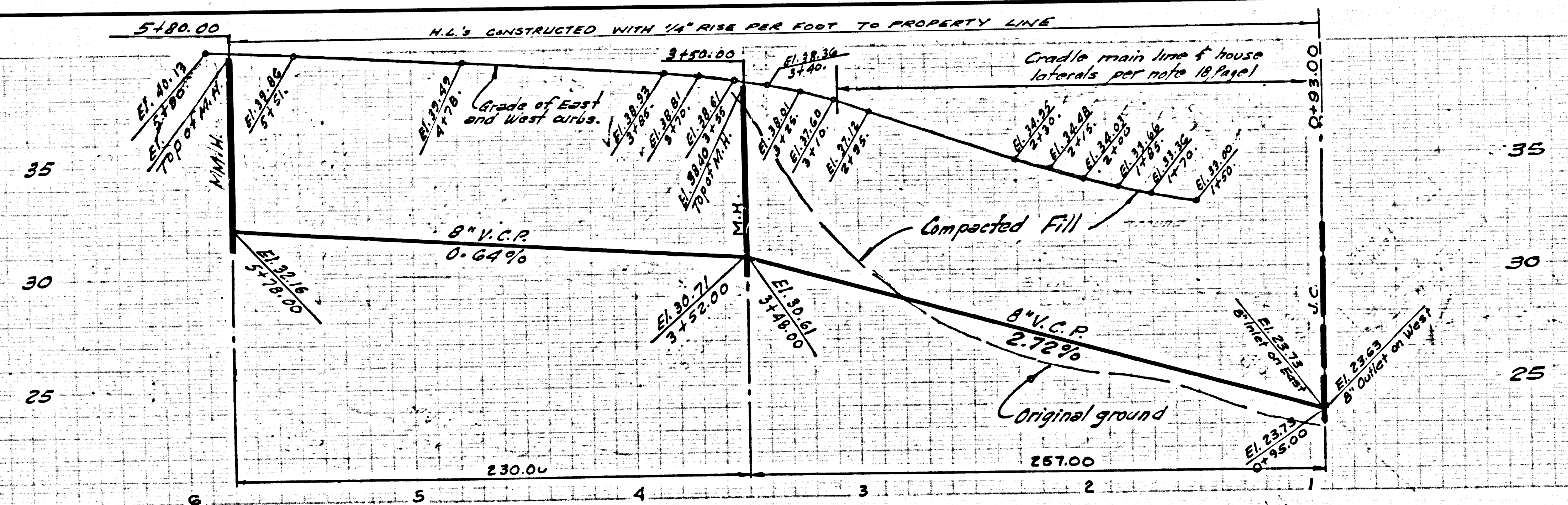
NO CHARGE FOR CONNECTIONS

37178

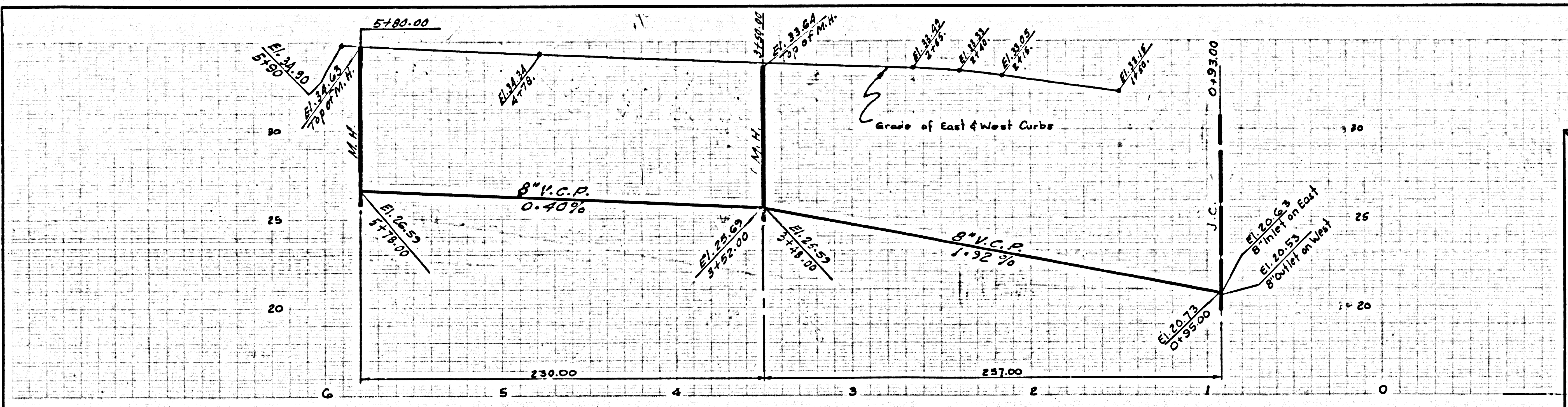


NO CHARGE FOR CONNECTIONS

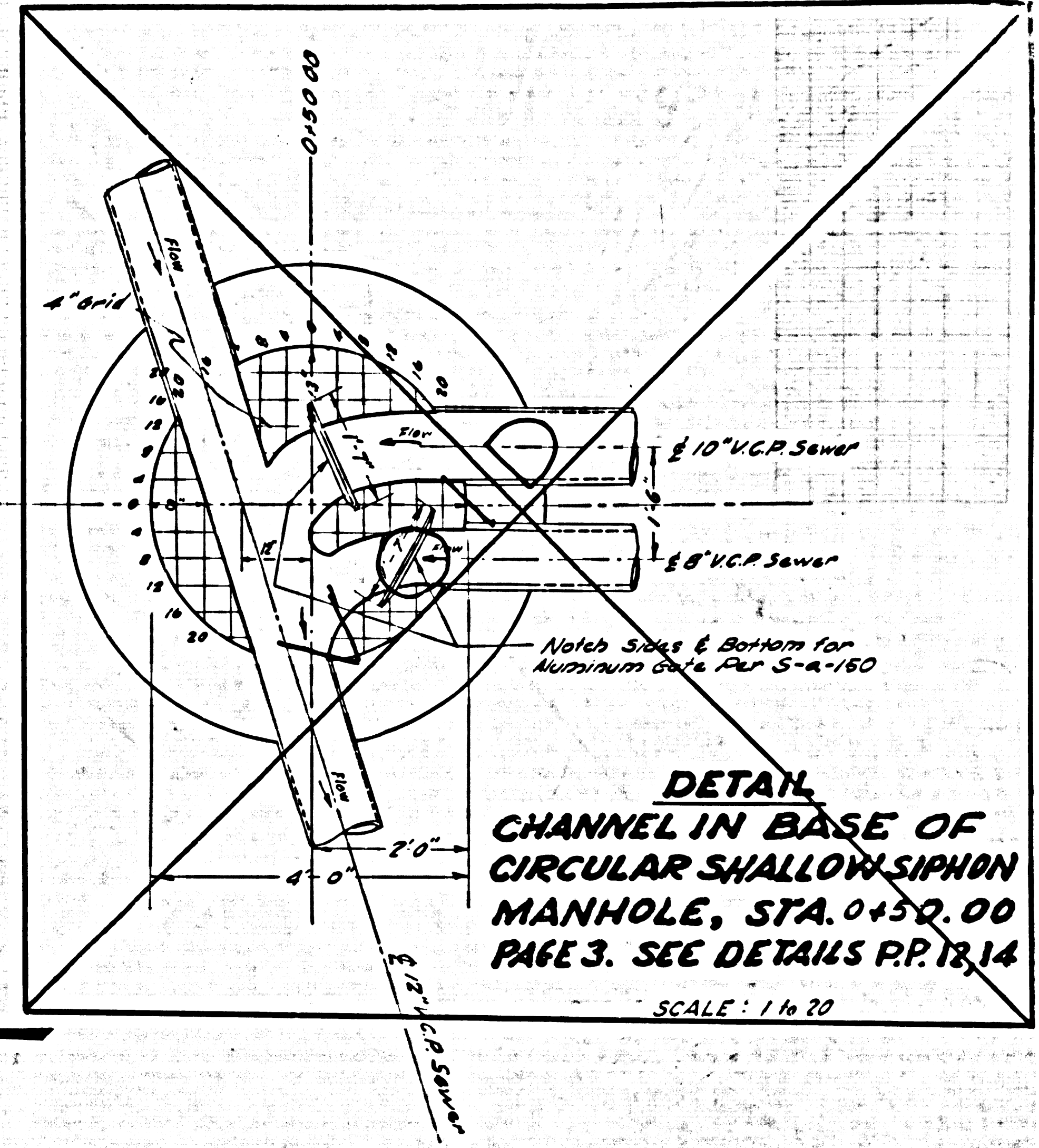
37179



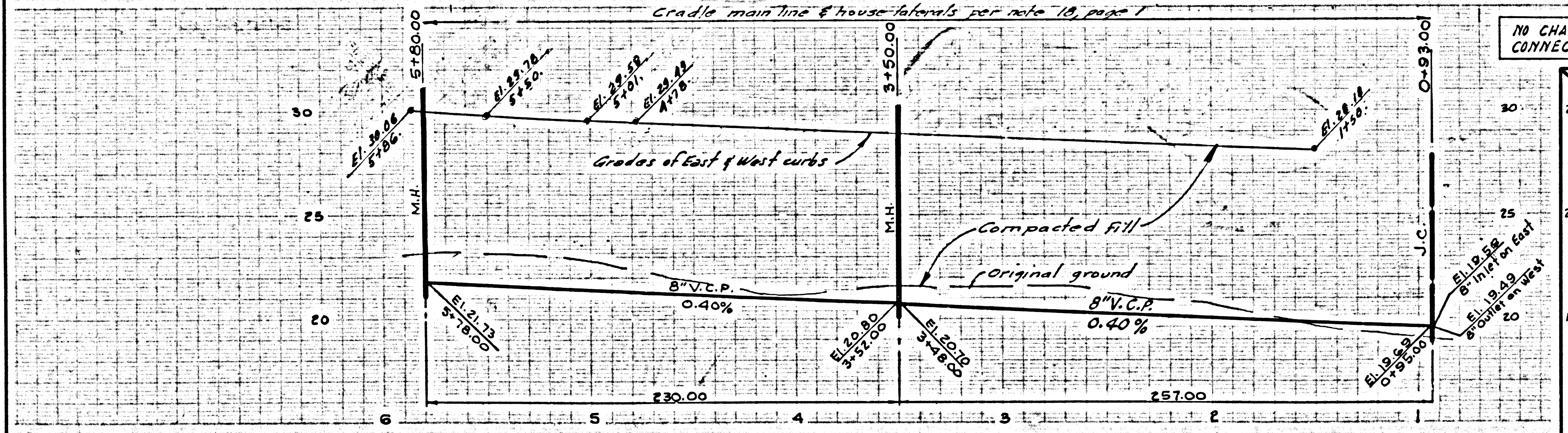
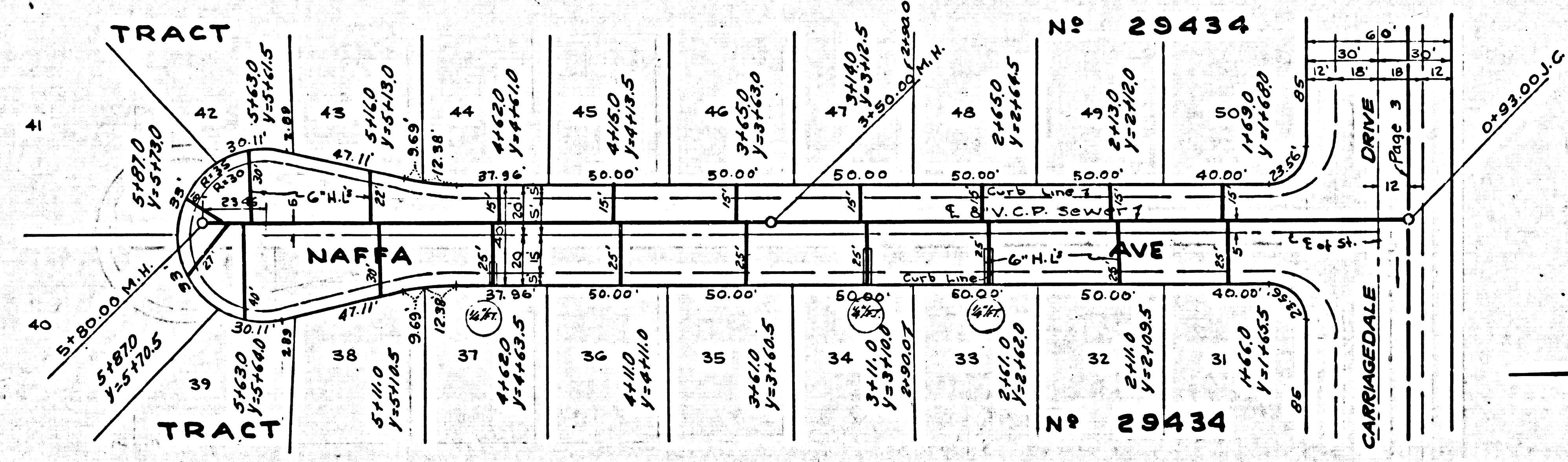
7



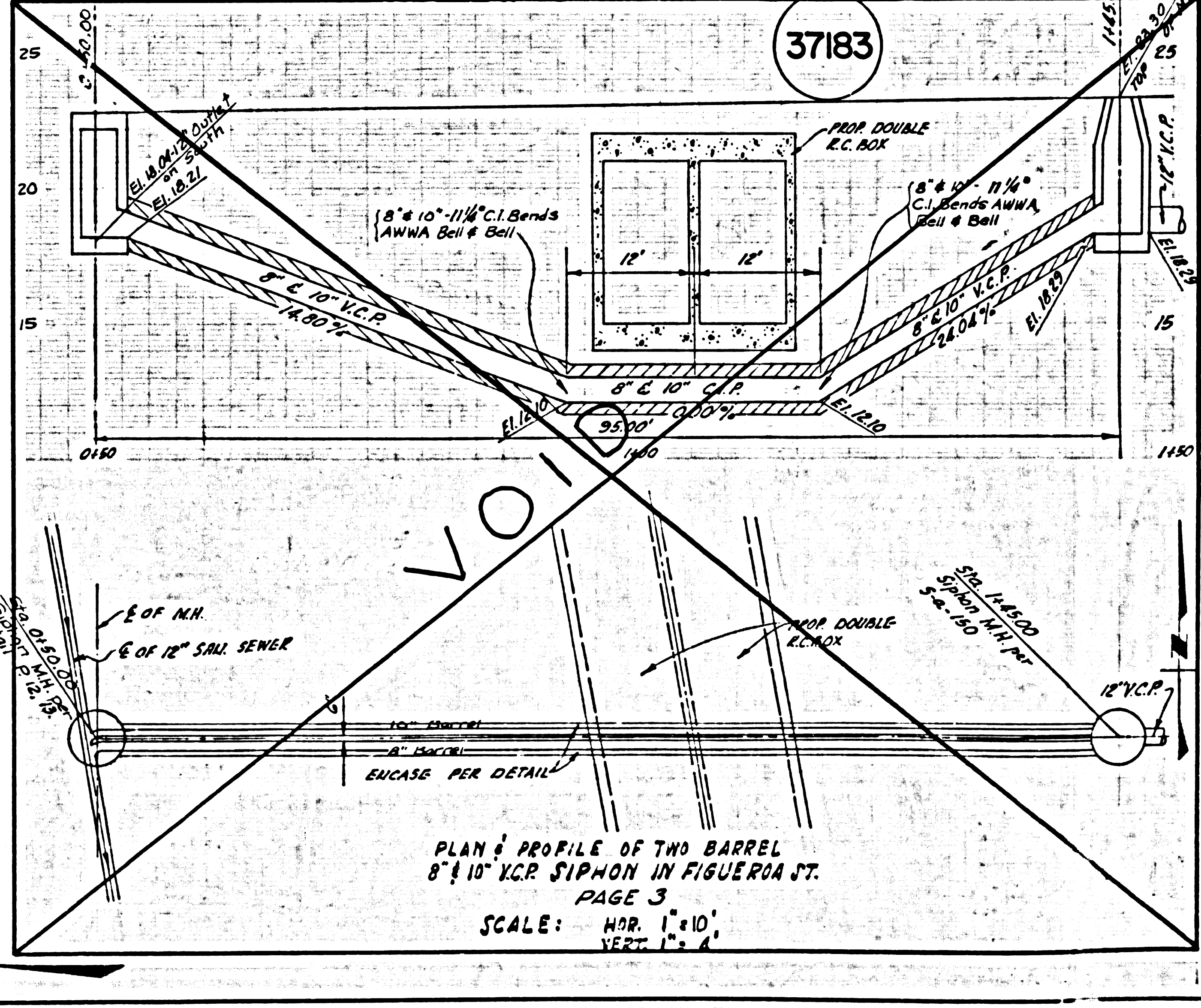
37182 NO CHARGE FOR CONNECTIONS



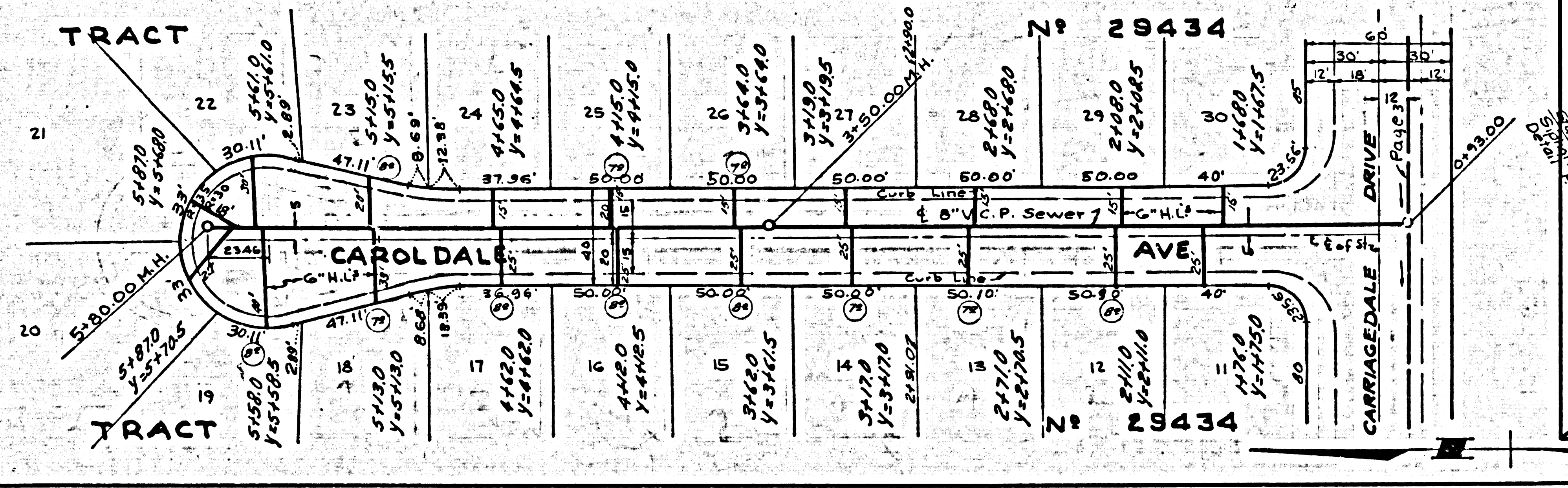
DETAIL CHANNEL IN BASE OF CIRCULAR SHALLOW SIPHON MANHOLE, STA. 0+50.00 PAGE 3. SEE DETAILS PP. 13, 14



NO CHARGE FOR CONNECTIONS



PLAN & PROFILE OF TWO BARREL 8" V.C.P. SIPHON IN FIGUEROA ST. PAGE 3 SCALE: HORIZ. 1" = 10', VERT. 1" = 4''



TR 29434 S. 7