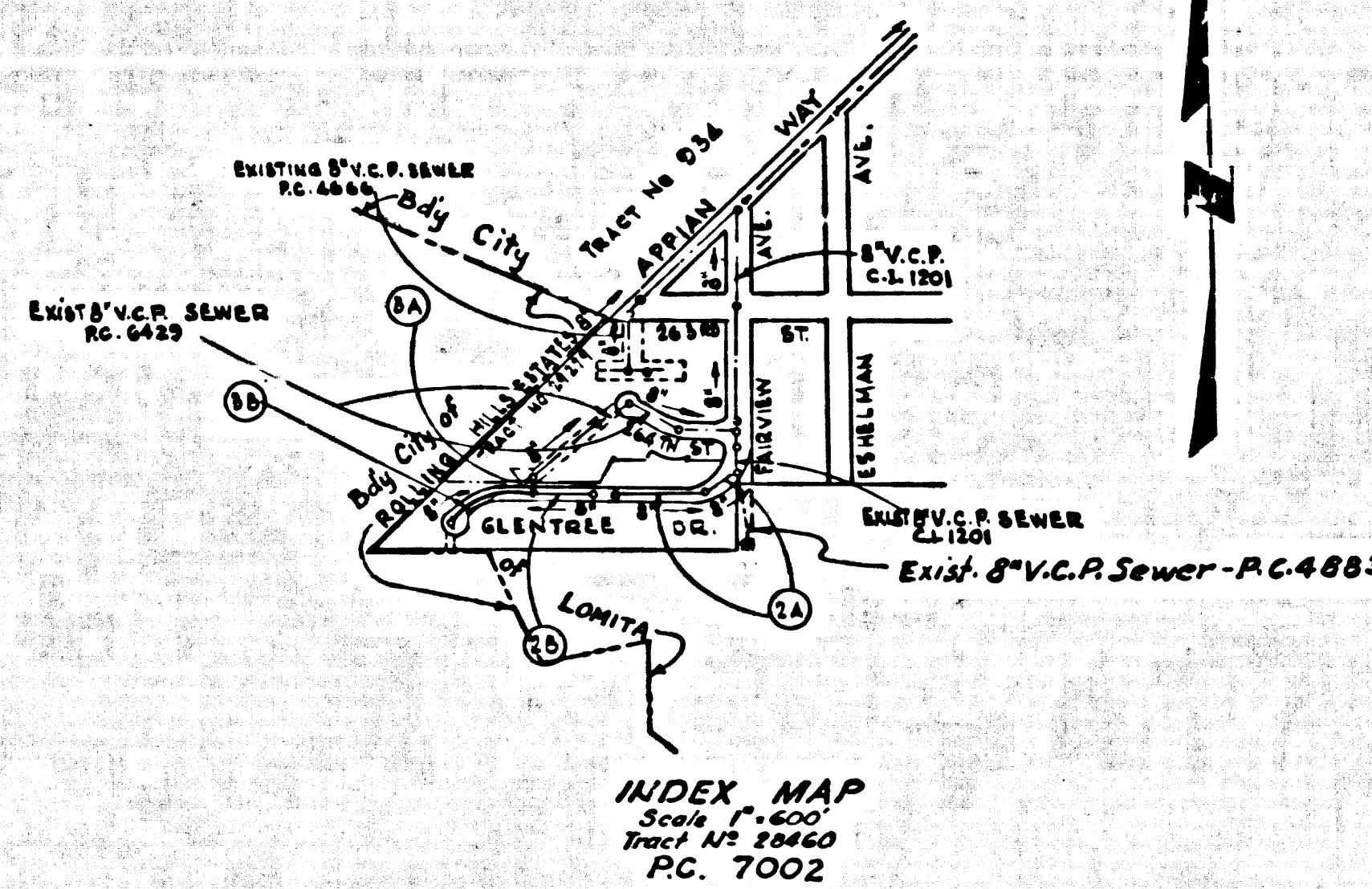


B.M. SY-5939 ELEV. 110.731
 L & B.N. N. C.B. PACIFIC COAST HWY. 4'S
 W.S. C.S. 56' W. & 35' N. C. INT. PACIFIC
 COAST HWY. & EHELMAN AVENUE.
 PALOS VERDES QUAD. 1960



**PRIVATE ENGINEER'S
 NOTICE TO CONTRACTOR**
 THE EXISTENCE AND LOCATION OF ANY UNDERGROUND UTILITIES ARE NOT SHOWN ON THESE PLANS AND ARE OBTAINED BY A SEARCH OF THE AVAILABLE RECORDS. TO THE BEST OF OUR KNOWLEDGE THERE ARE NO OTHER UTILITIES SHOWN ON THIS MAP. THE CONTRACTOR IS ADVISED TO TAKE PRECAUTIONARY MEASURES TO PROTECT THE UTILITIES SHOWN AND ANY OTHER LINES NOT OF RECORD OR NOT SHOWN ON THIS DRAWING.

**DOUBLE SCALE
 LOMITA BLDG. DIST. NO. 12.01**

- NOTE:**
1. PROVIDE STAKES ON THE PROPERTY LINES OR PROPERTY LINES PRODUCED AT RIGHT ANGLES TO THE SEWER LINE AT THE CENTER LINE OF EACH MANHOLE.
 2. NO REPRESENTATIVE OF THE CITY ENGINEER WILL SURVEY OR LAY OUT ANY PORTION OF THE WORK.
 3. THE PRIVATE ENGINEER SHALL FURNISH THE CITY ENGINEER WITH GRADE SHEETS AND STATIONING FOR ALL HOUSE LATERALS AND Y BRANCHES AND SHALL PROVIDE STAKES FOR THEM AT THEIR PROPER LOCATIONS WITH STATIONING PLAINLY MARKED. ALL HOUSE LATERALS SHALL BE CONSTRUCTED IN A STRAIGHT ALIGNMENT AT RIGHT ANGLES FROM THE MAIN LINE SEWER EXCEPT AS SHOWN ON THE PLANS. HOUSE LATERALS FROM CURBSIDE SHALL NOT HAVE AN ANGLE OF LESS THAN 45° WITH THE MAIN LINE SEWER. ANY CHANGE IN ALIGNMENT SHALL BE REQUESTED BY THE PRIVATE ENGINEER.
 4. THE PRIVATE ENGINEER SHALL FURNISH THE HOUSE LATERAL DEPTH AT THE PROPERTY LINE BELOW THE TOP OF CURB ELEVATION FOR EACH HOUSE LATERAL ON THE GRADE SHEET.
 5. NO REVISIONS SHALL BE MADE IN THESE PLANS WITHOUT THE APPROVAL OF THE CITY ENGINEER.
 6. THE CONTRACTOR SHALL NOTIFY THE CONSTRUCTION DIVISION BY TELEPHONE, MADISON 5-4747, EXT. 8231, AT LEAST TWENTY-FOUR HOURS BEFORE STARTING ANY WORK UNDER THIS CONTRACT.
 7. MANHOLES SHALL BE BRICK SEWER STRUCTURES PER S-3. PRECAST CONCRETE MANHOLES PER S-5 OR S-6 MAY BE USED AS AN ALTERNATE IN LOCATIONS APPROVED BY THE CITY ENGINEER.
 8. USE STANDARD MANHOLE FRAMES AND COVERS, S-16 EXCEPT AS NOTED.
 9. MANHOLE TOPS IN UNAPPROVED RIGHTS-OF-WAY TO BE SIX INCHES ABOVE FINISHED GRADE.
 10. USE EXTRA STRENGTH PIPE. ALL PIPE IS STANDARD DEPTH EXCEPT AS NOTED.
 11. USE MECHANICAL COMPRESSION JOINTS FOR ALL V.C.P. JOINTS PER SPEC., SECT. 26 & 48.6-69.
 12. IF A POWER POLE IS WITHIN THREE FEET OF THE SEWER, THE SEWER SHALL BE ENCASED, PER S-23, CASE III, TWO FEET ON EACH SIDE FROM THE POINT OF INTERFERENCE.
 13. IF DURING THE COURSE OF CONSTRUCTION IT IS DETERMINED THAT THERE IS LESS THAN FOUR FEET OF COVER OVER THE TOP OF A MAIN LINE OR HOUSE LATERAL V.C.P. SEWER WHICH IS NOT INDICATED ON THE PLANS, THE PIPE SHALL BE ENCASED PER S-23, CASE III, UNLESS OTHERWISE APPROVED BY THE CITY ENGINEER.
 14. HOUSE LATERALS TO BE CONSTRUCTED WITH INVERTS AT PROPERTY LINE. 6" BELOW CURB GRADE EXCEPT AS NOTED.
 15. RESURFACE ALL TRENCHES WITHIN PAVED AREAS TO MEET L.A. CITY ROAD DEPT. OR CALIFORNIA STATE HIGHWAY REQUIREMENTS IN ACCORDANCE WITH PERMITS.
 16. FOR ALLOWABLE LEAKAGE TEST USE FORMULA NO. 1, SPEC. SEC. 54.
 17. ALL STATE AND LOCAL TRENCH SAFETY ORDERS SHALL BE STRICTLY ENFORCED.
 18. An acceptable certification of compaction test results shall be submitted to the construction division compaction tests are to be made in accordance with A.S.T.M. Standard method of test D-698-42T.
 - a. No construction is permitted in filled areas where the relative density of compaction is less than 90%.
 - b. If the relative density of compaction is less than 90% all main lines and M.H.'s shall be cradled per S-33 or have a special base course per S-21 Case III, Special M.H. Bases per S-14.
 - c. If the relative density of compaction is 90% or greater then special provisions in (c) are not required.

PROFILE ALIGNMENT AND GRADE OF **P.C.7002**
SANITARY SEWERS PAGE 1
 TO BE CONSTRUCTED IN

TRACT No 28460
PRIVATE CONTRACT NO. 7002

W.S. 28
 2 SHEETS, 2 PAGES
 SCALE: HORIZ. 1" = 40' VERT. 1" = 4'
 May, 1964
 PREPARED IN THE OFFICES OF
E.L. PEARSON & ASSOCIATES
 343 Hawthorne Way, Hawthorne, Calif.
 by *Thomas C. Clark*
 REG. C. E. NO. 9157

NOTE:
 GRADES TO WHICH THIS IMPROVEMENT IS TO BE CONSTRUCTED ARE SHOWN ON PLANS AND PROFILES. GRADE POINTS FOR TOP OF CURBS, CENTER LINE OF STREETS, OR CENTER LINE OF ALLEYS ARE SHOWN BY CIRCLES ON PROFILES. AT ALL POINTS BETWEEN DESIGNATED ELEVATIONS ARE IN FEET ABOVE M.S.L. & S.E.A. LEVEL DATUM OF 1929.
 THE DRAWINGS AND THE DATA HEREON ARE HEREBY MADE A PART OF THE SPECIFICATIONS.
 BEFORE WORK CAN BE STARTED, THE CONTRACTOR MUST OBTAIN A PERMIT TO EXCAVATE IN THE CITY ENGINEER'S OFFICE. THE CITY ENGINEER SHALL BE PROSECUTED ONLY IN THE PRESENCE OF THE COUNTY ENGINEER.
 APPROVAL OF THIS PLAN BY THE CITY ENGINEER AND PAY A FEE TO THE CITY ENGINEER, SOCIAL SCI. COUNTY ENGINEERING BUILDING, 100 WEST SECOND STREET, PALM BEACH, FLORIDA, SHALL CONSTITUTE A REPRESENTATION AS TO THE ACCURACY OF THE PROJECT. THIS NOTICE APPLIES TO ALL UNDERGROUND UTILITY PIPE, OR STRUCTURE WITHIN THE LIMITS OF THE PROJECT. THIS NOTICE IS TO BE OBTAINED FROM THE STATE HIGHWAY DEPARTMENT MUST BE OBTAINED FROM THE STATE OF CALIFORNIA, DIVISION OF HIGHWAYS, 1200 SOUTH SPRING STREET, LOS ANGELES, CALIFORNIA.

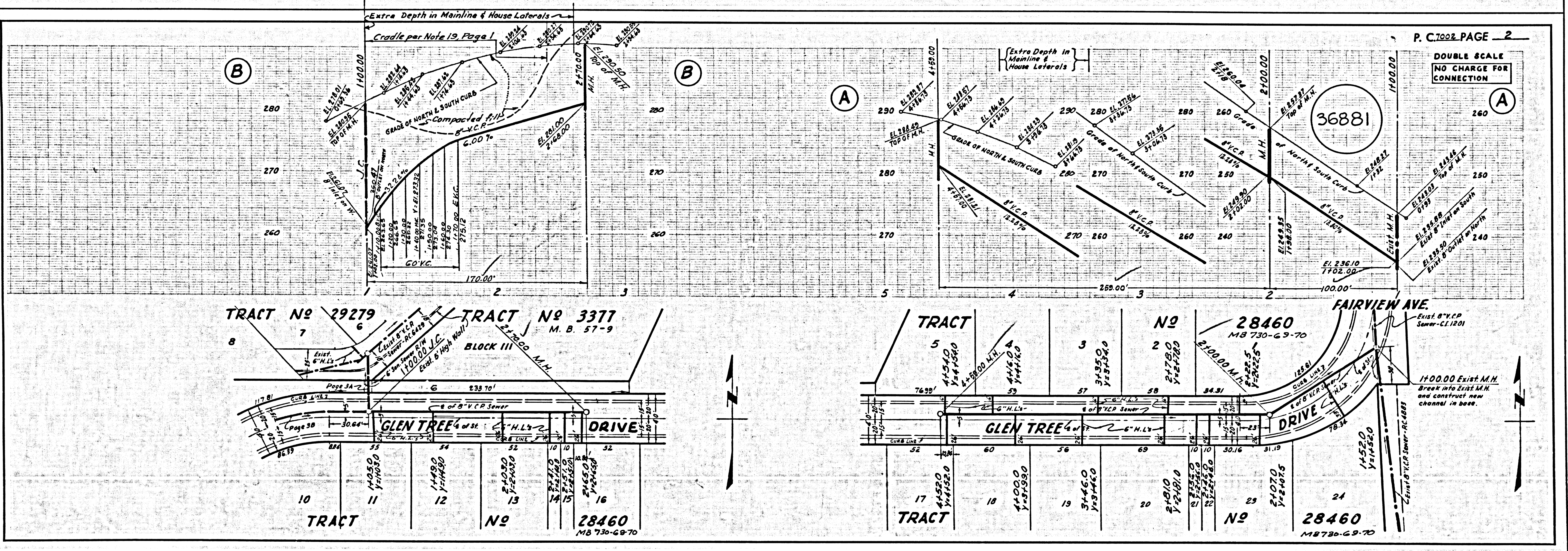
CITY OF LOMITA, CALIFORNIA
JOHN A. LAMBIE, CITY ENGINEER **J. D. PARKHURST, CHIEF ENGINEER**
 APPROVED BY *John A. Lambie* APPROVED BY *J. D. Parkhurst*
 ASSISTANT SANITATION ENGINEER REGIONAL ENGINEER
 SUBMITTED BY *John A. Lambie* REGIONAL ENGINEER
 CHECKED BY *Thomas C. Clark* REG. C. E. NO. 106553

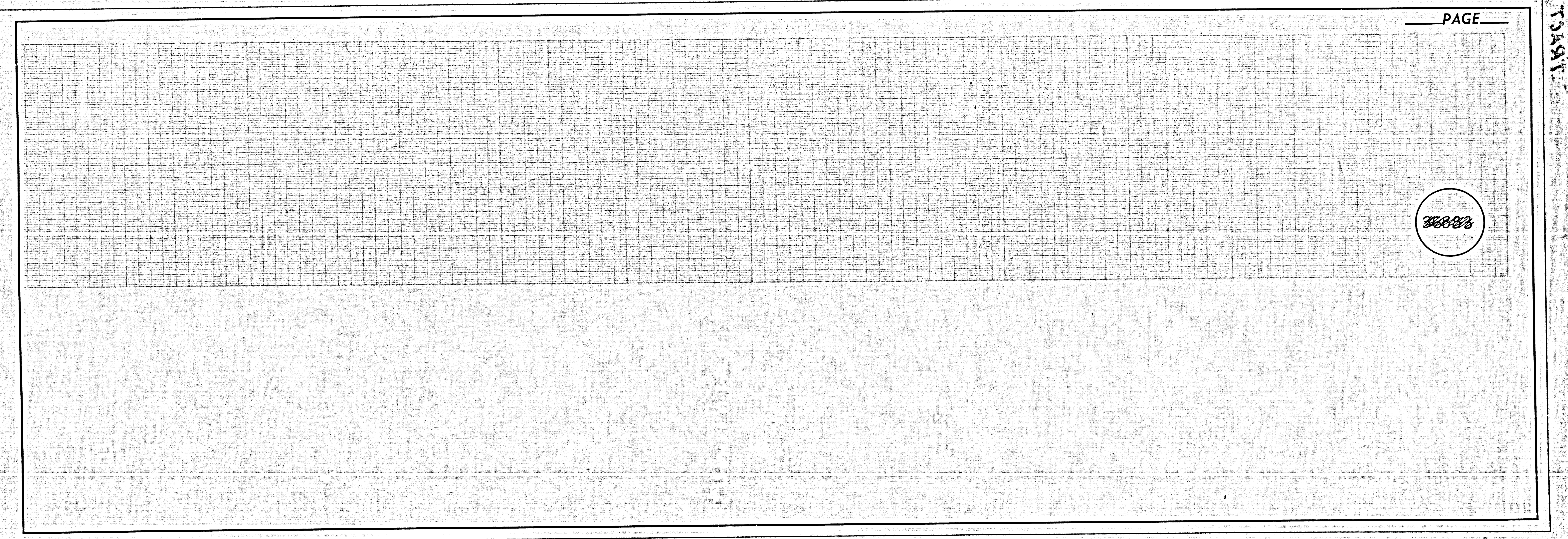
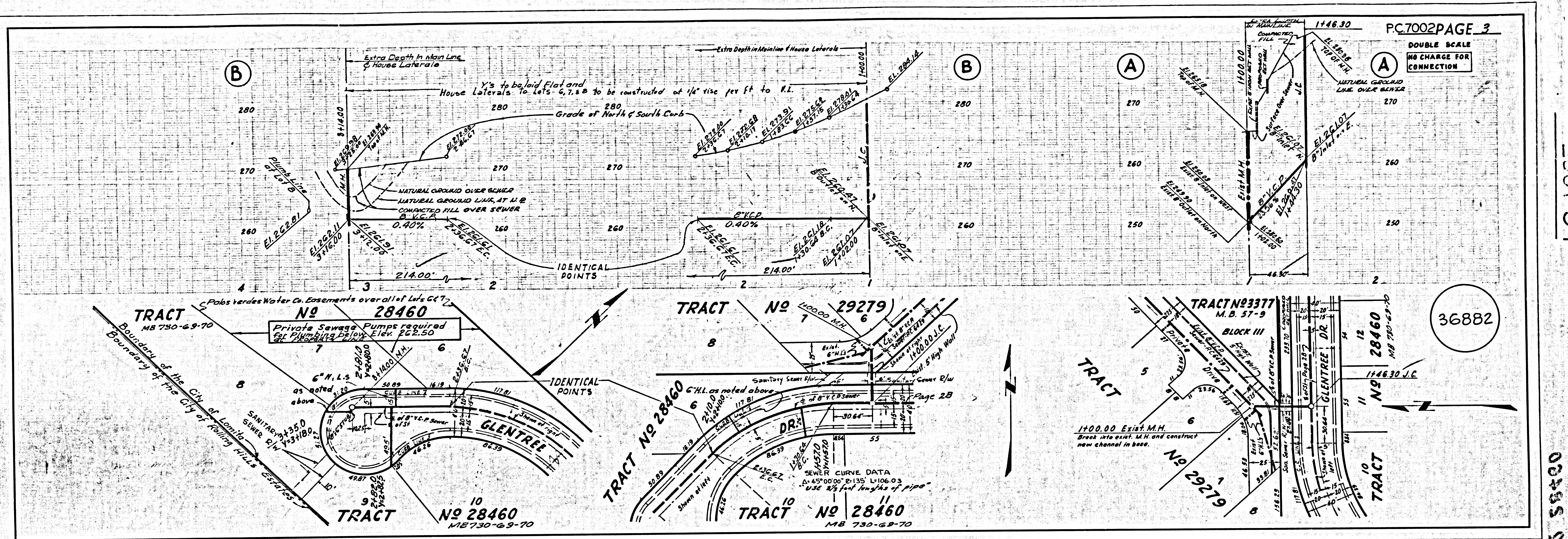
**COLLECT CHARGES
 AS INDICATED**
L. Austin 1-26-65

NO CONNECTIONS FOR THE DISPOSAL OF INDUSTRIAL WASTES SHALL BE MADE TO SEWERS SHOWN ON THESE DRAWINGS WITHOUT WRITTEN PERMISSION FROM THE CHIEF ENGINEER AND GENERAL MANAGER OF THE COUNTY SANITATION DISTRICTS.

36880

312415
 J.N. 3/24.15





PC.7002 PAGE 3
DOUBLE SCALE
NO CHARGE FOR CONNECTION

PAGE

TRACT NO 28460