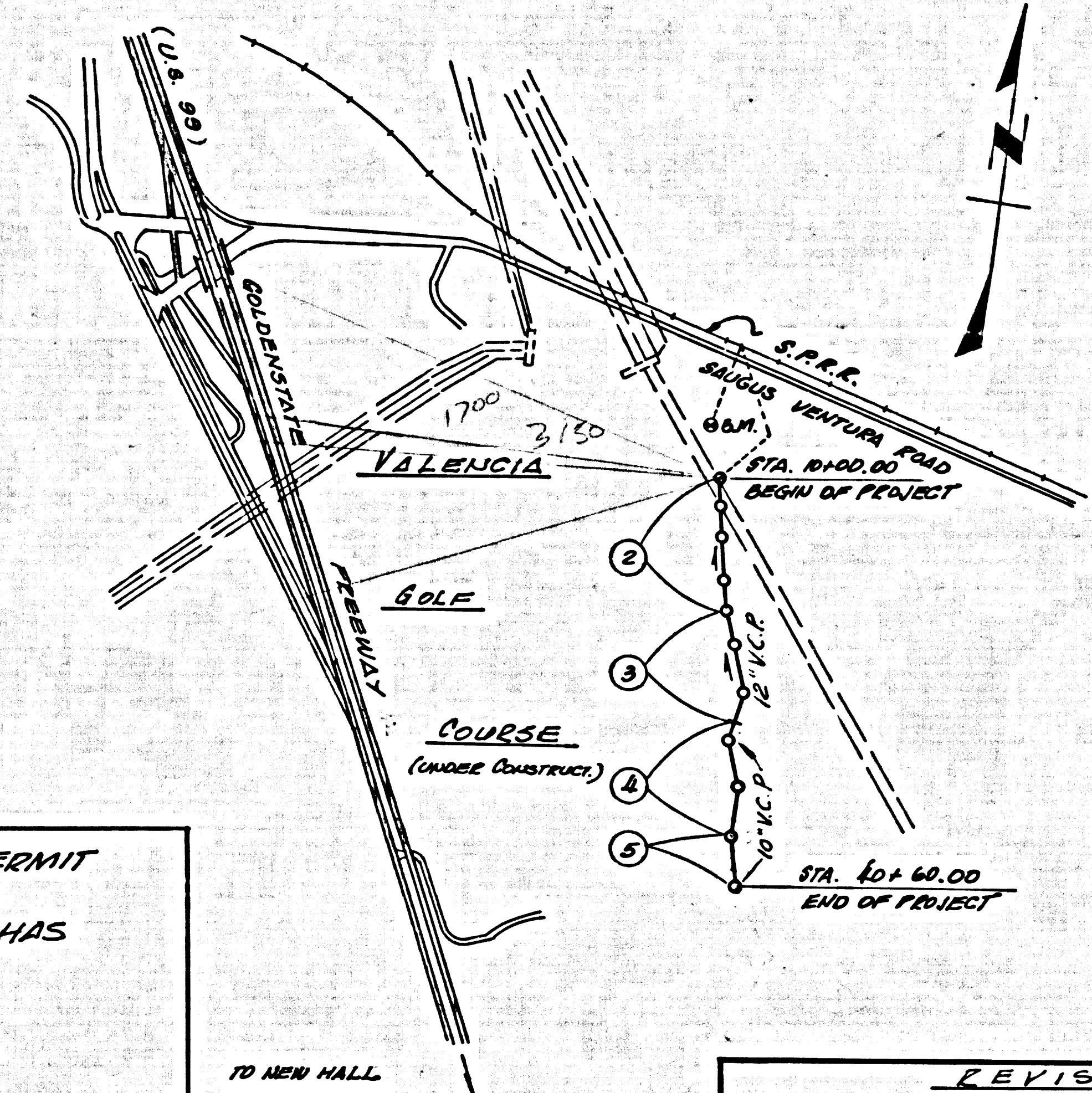


B.M. U.S.G.S. ELEV. 1100.160
 COPPER PLUG IN CONCRETE
 8.0 MILES WEST ALONG SANTA
 ROSA BEACH ON S.P.R. FROM
 SAUGUS STATION, 101.6' S OF S. E. COR.
 FROM TOWER, 281.3' W OF S. E. COR.
 U.S. N.E. OF POLICE COFFICE POST, N.E. OF
 AN WITNESS POST



DO NOT ISSUE CONNECTION PERMIT
 UNTIL AN OUTLET HAS BEEN
 PROVIDED AND THE RIGHT OF WAY HAS
 BEEN CLEARED.

NEWHALL BLDG. DIST. NO. 3.2

PROFILE ALIGNMENT AND GRADE OF
SANITARY SEWERS P.C. 7007
 TO BE CONSTRUCTED IN PAGE 1

VALENCIA GOLF COURSE
 SAUGUS, CALIF.
 PRIVATE CONTRACT NO. 7007

W.S. 63
 3 SHEETS, 5 PAGES
 SCALE: VERT. 1" = 4'
 HORIZ. 1" = 40'
 MAY 13, 1964

PREPARED BY THE OFFICES OF
POMEROY JOHNSTON & BAILEY
 BY: Harry N. Bailey, May 13, 1964
 REG. C. B. NO. 11763

34913

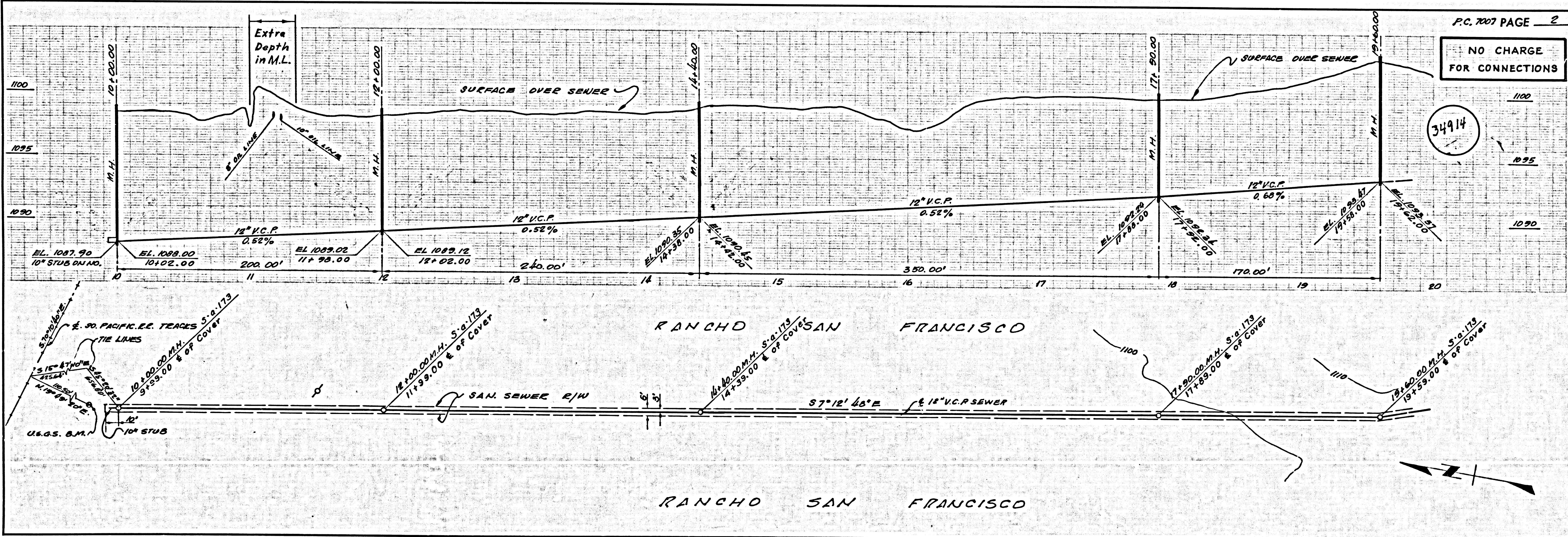
- NOTE:
1. PROPERTY STAKES ON THE PROPERTY ARE TO BE PROVIDED AT RIGHT ANGLES TO THE SEWER LINE AT THE CENTER LINE OF EACH MANHOLE.
 2. NO REPRESENTATIVE OF THE COUNTY ENGINEER WILL SURVEY OR LAY OUT ANY PORTION OF THE WORK.
 3. THE PRIVATE ENGINEER SHALL PROVIDE THE COUNTY ENGINEER WITH GRADE SHEETS AND STATIONING FOR ALL HOUSE LATERALS AND MANHOLES AND SHALL PROVIDE STAKES FOR THEM AT THEIR PROPER LOCATIONS WITH SIGHTING PLAINLY MARKED. ALL HOUSE LATERALS SHALL BE CONSTRUCTED IN A STRAIGHT ALIGNMENT AT RIGHT ANGLES FROM THE MAIN LINE SEWER EXCEPT AS SHOWN ON THE PLANS. HOUSE LATERALS FROM EXISTING MANHOLES SHALL BE LONGER THAN 40' UNLESS THE MAIN LINE SEWER OR ANY CHANGE IN ALIGNMENT SHALL BE REQUESTED IN WRITING BY THE PRIVATE ENGINEER.
 4. THE PRIVATE ENGINEER SHALL RUN THE HOUSE LATERAL DEPTH TO THE PROPERTY LINE BEHIND THE TOP OF CURB ELEVATION FOR EACH HOUSE LATERAL ON THE GRADE SHEET.
 5. NO REVISIONS SHALL BE MADE IN THESE PLANS WITHOUT THE APPROVAL OF THE COUNTY ENGINEER.
 6. THE CONTRACTOR SHALL NOTIFY THE CONSTRUCTION DIVISION BY TELEPHONE, MADISON 9-4747, EXT. 8138, AT LEAST TWENTY-FOUR HOURS BEFORE STARTING ANY WORK UNDER THIS CONTRACT.
 7. MANHOLES SHALL BE BRICK-SPUR STRUCTURES PER S-2-204, PRECAST CONCRETE MANHOLES PER S-2-205 OR S-2-206 UNLESS APPROVED OTHERWISE BY THE COUNTY ENGINEER.
 8. USE STANDARD MANHOLE FRAMES AND COVERS, S-2-171, BRICK OR SPUR.
 9. MANHOLE TOPS IN UNIMPROVED RIGHTS-OF-WAY TO BE SET INCHES ABOVE FINISHED GRADE.
 10. USE EXTRA STRENGTH PIPE. ALL PIPE IS STANDARD DEPTH EXCEPT AS NOTED.
 11. USE GASKET JOINTS OR MECHANICAL COMPRESSION JOINTS FOR ALL V.C.P. JOINTS PER SPEC., SECS. 54 & 54.01.
 12. NUMBER OVER BRICK-SPUR MANHOLES IS INDICATED DURING THE CONSTRUCTION OF THE SEWERS, THE V.C.P. JOINTS SHALL BE OF JOINT CONSTRUCTION PER S-2-205 OR S-2-206 FOR MECHANICAL COMPRESSION JOINTS PER SPEC. S-2-205 OR S-2-206.
 13. IF A POWER POLE IS WITHIN THREE FEET OF THE SEWER, THE SEWER SHALL BE ENCASED PER S-2-272, CASE III, TWO FEET ON EITHER SIDE FROM THE POINT OF INTERFERENCE.
 14. IF DURING THE COURSE OF CONSTRUCTION IT IS DETERMINED THAT THERE IS LESS THAN FOUR FEET OF COVER OVER THE TOP OF A MAIN LINE OR HOUSE LATERAL V.C.P. SEWER WHICH IS NOT INDICATED ON THE PLANS, THE PIPE SHALL BE ENCASED PER S-2-272, CASE III, UNLESS OTHERWISE APPROVED BY THE COUNTY ENGINEER.
 15. HOUSE LATERALS TO BE CONSTRUCTED WITHIN AREAS TO BE ACQUIRED BY THE COUNTY ENGINEER SHALL BE CONSTRUCTED IN ACCORDANCE WITH PERMITS.
 16. RESURFACE ALL TRENCHES WITHIN PAVED AREAS TO MEET L.A. COUNTY ROAD DEPT. OR CALIFORNIA STATE HIGHWAY REQUIREMENTS IN ACCORDANCE WITH PERMITS.
 17. FOR ALLOWABLE SEWAGE TEST USE FORMULA NO. 2, SPEC. SEC. 54.
 18. ALL STATE AND LOCAL TRENCH SAFETY ORDERS WILL BE RIGIDLY ENFORCED.

NOTE:
 GRADES TO WHICH THIS IMPROVEMENT IS TO BE CONSTRUCTED ARE SHOWN ON PLANS AND PROFILES. GRADE POINTS FOR TOP OF CURB, CENTER LINE OF STREETS, OR CENTER LINE OF ALLEYS ARE SHOWN BY CIRCLES ON PROFILES. AT ALL POINTS BETWEEN DISCRETE POINTS THE GRADE SHALL BE ESTABLISHED SO AS TO CONFORM TO A STRAIGHT LINE DRAWN BETWEEN SAID DESIGNATED POINTS. RELATIONS ARE IN FEET ABOVE U.S.C. & G.S. SEA LEVEL DATUM OF 1929.
 THIS DRAWING AND THE DATA HEREON ARE HEREBY MADE A PART OF THE SPECIFICATIONS.
 WORK SHALL BE CONSTRUCTED ACCORDING TO STANDARD SPECIFICATIONS DATED DECEMBER 15, 1962, ON FILE IN THE OFFICE OF THE COUNTY ENGINEER AND SHALL BE PROSECUTED ONLY IN THE PRESENCE OF THE COUNTY ENGINEER, BEFORE ANY
 WORK BEGINS. THE CONTRACTOR SHALL BE RESPONSIBLE FOR THE PROTECTION OF ALL EXISTING UTILITIES AND STRUCTURES.
 APPROVAL OF THIS PLAN BY THE COUNTY OF LOS ANGELES DOES NOT CONSTITUTE A REPRESENTATION AS TO THE ACCURACY OF THE LOCATION OF OR THE EXISTENCE OR NON-EXISTENCE OF ANY UNDERGROUND UTILITY PIPE, OR STRUCTURE WITHIN THE LIMITS OF THIS PROJECT. THIS NOTE APPLIES TO ALL PAGES.
 IF WORK IS TO BE DONE ON A STATE HIGHWAY, A PERMIT MUST BE OBTAINED FROM THE STATE OF CALIFORNIA, DIVISION OF HIGHWAYS, 120 SOUTH BRINK STREET, LOS ANGELES, CALIFORNIA.

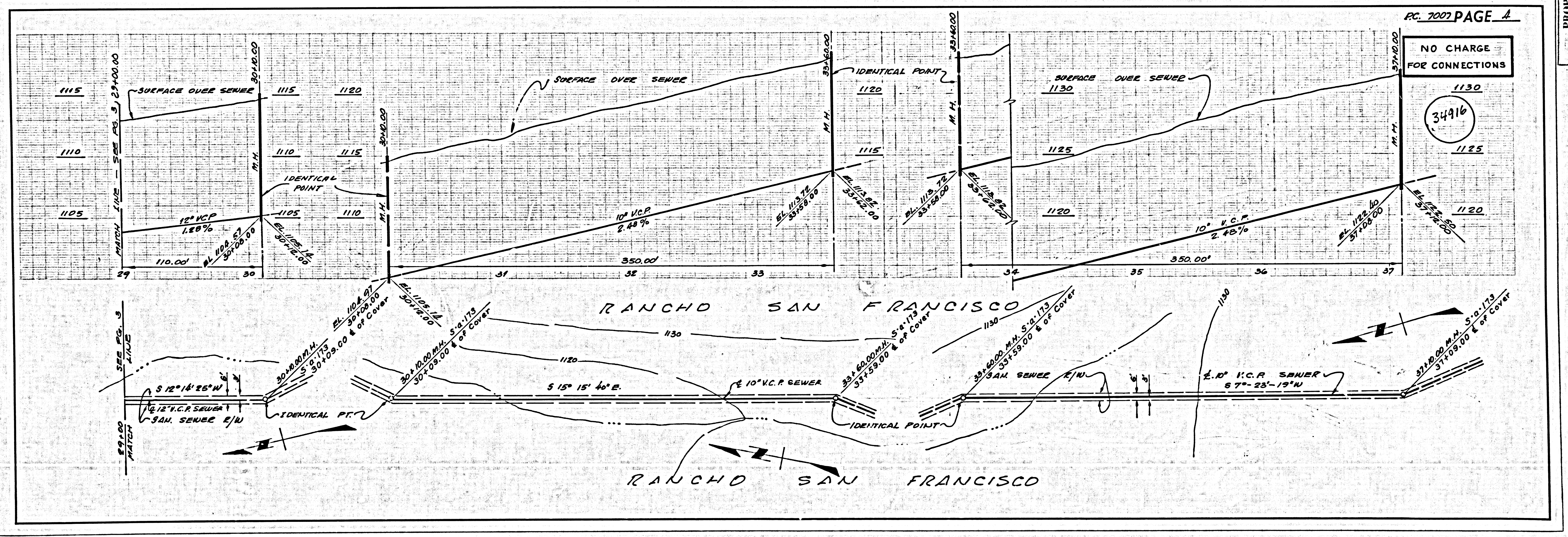
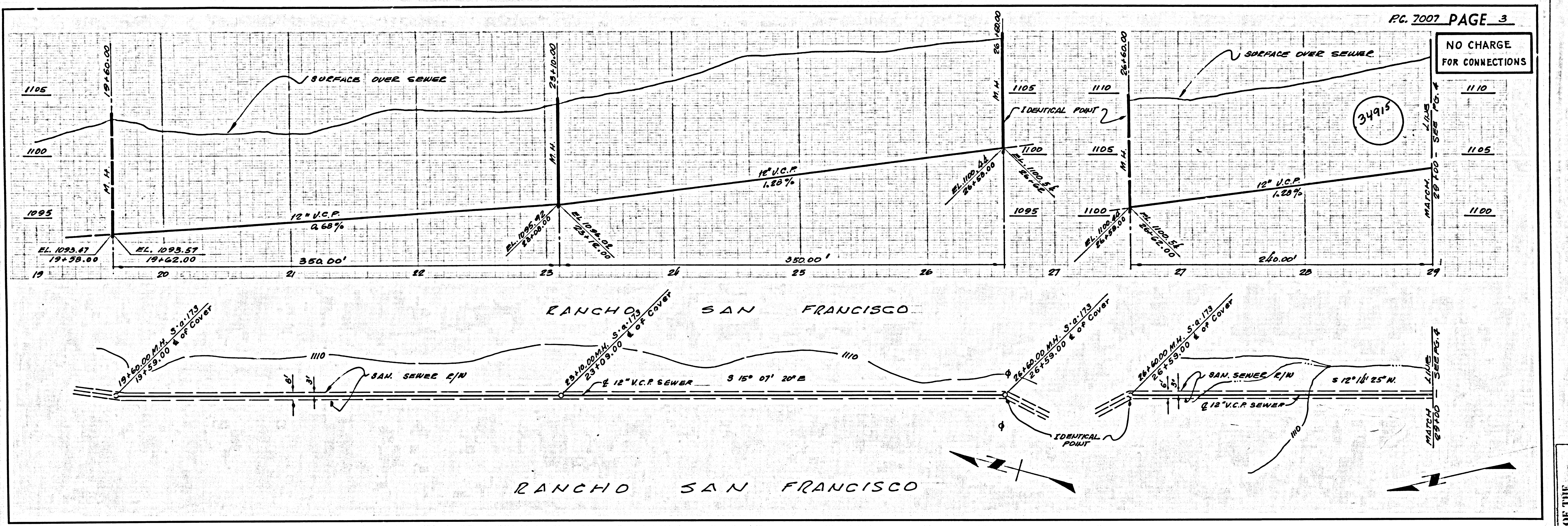
COUNTY OF LOS ANGELES, CALIFORNIA
 JOHN A. LAMBIE, COUNTY ENGINEER
 APPROVED BY: *[Signature]*
 ASSISTANT SANITATION ENGINEER
 SUBMITTED BY: *[Signature]*
 PROJECT ENGINEER
 CHECKED BY: *[Signature]*
 REG. C. E. NO. 34914

INDEX MAP Scale: 1" = 1000'	DATE: 6/11/64 SEWER ESTABLISHED FROM S.P.R. 33+66.00 TO 60+60.00	COLLECT CHARGES AS INDICATED <i>[Signature]</i> 6/8/64
POMEROY JOHNSTON & BAILEY CIVIL AND CHEMICAL ENGINEERS 660 SO. FAIR OAKS AVE. PASADENA, CALIF. Tel. 795-7553 or 681-4655		THE NEWHALL LAND AND FARMING COMPANY BY: <i>[Signature]</i> DATE: June 4, 1964

J. N. 0363.29



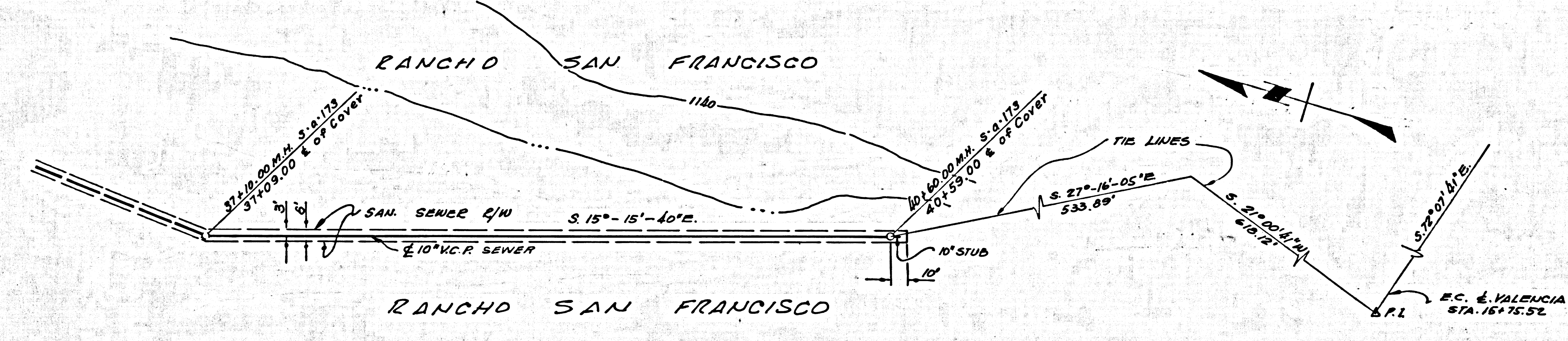
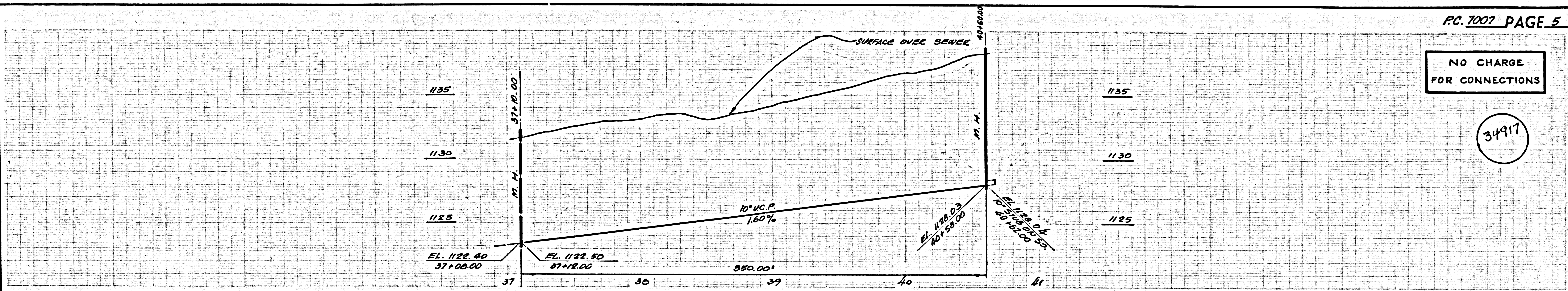
P.C. 7007 PAGE 2
 NO CHARGE FOR CONNECTIONS
 34914



PROPERTY OF THE COUNTY OF LOS ANGELES

NO CHARGE
FOR CONNECTIONS

34917



PROPERTY OF THE
COUNTY OF LOS ANGELES

PC. 7007

7007.00

SCALE 1/8" = 1' L.A. COUNTY SEWER SHEET NO. 2 SO. CAL. BLUEPRINT CO.