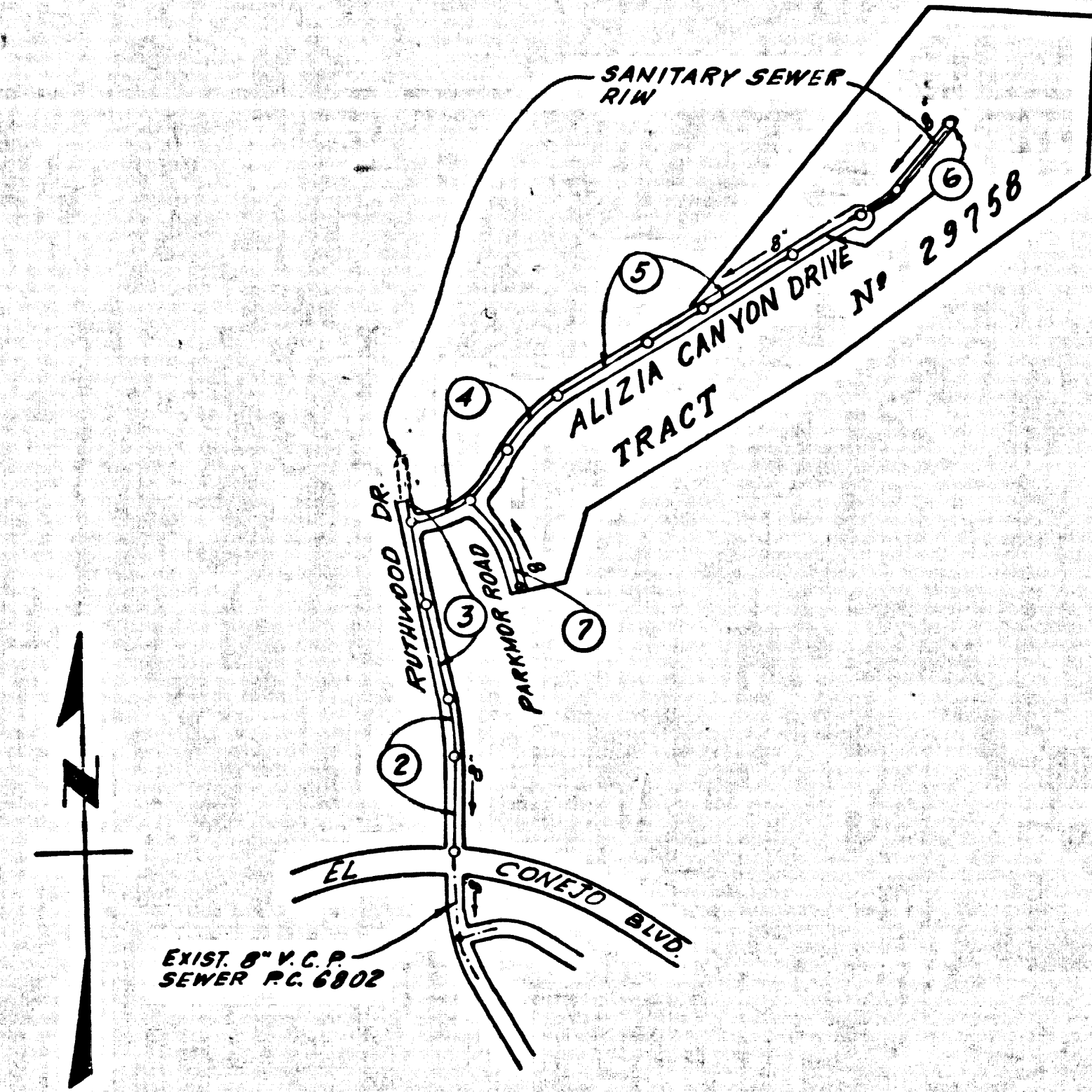


B.M. SY 5588 ELEV. 770.859  
 Set L&BN in conc base of light stand  
 (flood lights) in park lot of Billingshys  
 Steak Ranch 39°46'3.00" E 114'  
 Ventura Blvd & Las Virgenes Road  
 MALIBU QUAD. 19 60

REVISION 10-13-65  
 REVISED PAGE 3, DELETED 8" V.C.P.  
 FROM STA. 14+16.66 TO STA. 13+10.83  
 BY *J.G. Skand*  
 R.E. 3553  
 APPROVED *J.C. Kausung*



INDEX MAP  
 TRACT No. 29758  
 P.C. 7008  
 Scale: 1" = 600'

DOUBLE SCALE  
 CALABASAS BLDG. DIST. NO. 9.1

PROFILE ALIGNMENT AND GRADE OF  
 SANITARY SEWERS PAGE 1

TRACT No. 29758  
 PRIVATE CONTRACT NO. 7008

W.S. 90  
 1 SHEETS, 7 PAGES  
 SCALE: VERT. 1" = 4'  
 HORIZ. 1" = 40' APRIL, 1964

PREPARED IN THE OFFICES OF  
 Development Consultants, Inc.  
 ENGINEERING DIVISION  
 1001 E. Colorado Blvd. Pasadena, California  
 BY *J.G. Skand*  
 REG. C.E. NO. 3553  
 37070  
 37070

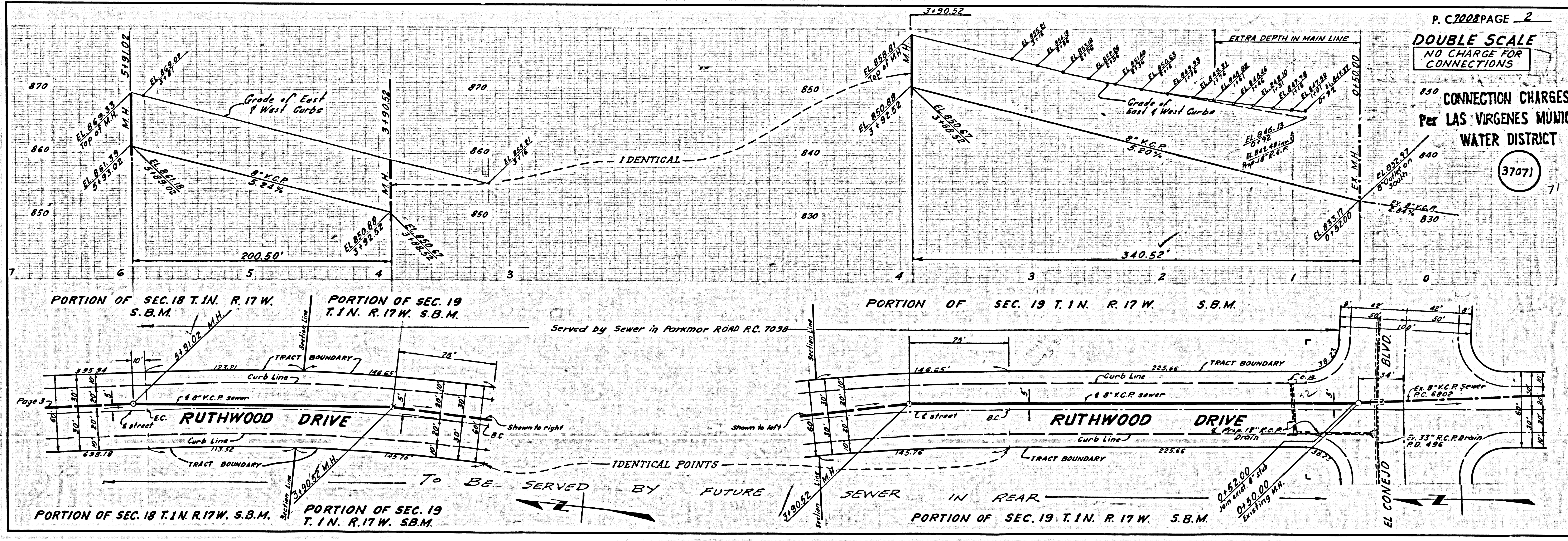
- NOTES:
1. PROVIDE STAKES ON THE PROPERTY LINE OR PROPERTY LINES PRODUCED AT RIGHT ANGLES TO THE SEWER LINE AT THE CENTER LINE OF EACH MANHOLE.
  2. NO REPRESENTATIVE OF THE COUNTY ENGINEER WILL SURVEY OR LAY OUT ANY PORTION OF THE WORK.
  3. THE PRIVATE ENGINEER SHALL FURNISH THE COUNTY ENGINEER WITH GRADE SHEETS AND STATIONING FOR ALL HOUSE LATERALS AND Y BRANCHES AND SHALL PROVIDE STAKES FOR THEM AT THEIR PROPER LOCATIONS WITH STATIONING PLAINLY MARKED. ALL HOUSE LATERALS SHALL BE CONSTRUCTED IN A STRAIGHT ALIGNMENT AT RIGHT ANGLES FROM THE MAIN LINE SEWER EXCEPT AS SHOWN ON THE PLANS. HOUSE LATERALS FROM CHIMNEYS SHALL NOT HAVE AN ANGLE OF LESS THAN 45° WITH THE MAIN LINE SEWER. ANY CHANGE IN ALIGNMENT SHALL BE REQUESTED IN WRITING BY THE PRIVATE ENGINEER.
  4. THE PRIVATE ENGINEER SHALL FURNISH THE HOUSE LATERAL DEPTH AT THE PROPERTY LINE BELOW THE TOP OF CURB ELEVATION FOR EACH HOUSE LATERAL ON THE GRADE SHEET.
  5. NO REVISIONS SHALL BE MADE IN THESE PLANS WITHOUT THE APPROVAL OF THE COUNTY ENGINEER.
  6. THE CONTRACTOR SHALL NOTIFY THE CONSTRUCTION DIVISION BY TELEPHONE, MADISON 9-4747, EXT. 8153, AT LEAST TWENTY-FOUR HOURS BEFORE STARTING ANY WORK UNDER THIS CONTRACT.
  7. MANHOLES SHALL BE BRICK SEWER STRUCTURES PER S-104. PRECAST CONCRETE MANHOLES PER S-103 OR S-173 MAY BE USED AS AN ALTERNATE IN LOCATIONS APPROVED BY THE COUNTY ENGINEER.
  8. USE STANDARD MANHOLE FRAMES AND COVERS, S-117, EXCEPT AS NOTED.
  9. MANHOLE TOPS IN UNIMPROVED RIGHTS-OF-WAY TO BE SIX INCHES ABOVE FINISHED GRADE.
  10. USE EXTRA STRENGTH PIPE, ALL PIPE IS STANDARD DEPTH EXCEPT AS NOTED.
  11. USE MECHANICAL COMPRESSION JOINTS FOR ALL V.C.P. JOINTS PER SPEC. SECT. 34 & 40.49
  12. IF A POWER POLE IS WITHIN THREE FEET OF THE SEWER, THE SEWER SHALL BE ENCASED, PER S-172, CASE II, TWO FEET ON EACH SIDE FROM THE POINT OF INTERFERENCE.
  13. IF DURING THE COURSE OF CONSTRUCTION IT IS DETERMINED THAT THERE IS LESS THAN FOUR FEET OF COVER OVER THE TOP OF A MAIN LINE OR HOUSE LATERAL V.C.P. SEWER WHICH IS NOT INDICATED ON THE PLANS, THE PIPE SHALL BE ENCASED PER S-172, CASE III, UNLESS OTHERWISE APPROVED BY THE COUNTY ENGINEER.
  14. HOUSE LATERALS TO BE CONSTRUCTED WITH INVERTS AT PROPERTY LINE... FEET BELOW CURB GRADE EXCEPT AS NOTED.
  15. INSURE ALL TRENCHES WITHIN PAVED AREAS TO MEET L.A. COUNTY ROAD DEPT. OR CALIFORNIA STATE HIGHWAY REQUIREMENTS IN ACCORDANCE WITH PERMITS.
  16. FOR ALLOWABLE LEAKAGE TEST USE FORMULA NO. 2, SPEC. SECT. 54.
  17. CONSTRUCTION IN FILLED AREAS  
 (a) An acceptable certification of compaction test results shall be submitted to the Construction Division of Compaction Test, Inc. to be made in accordance with A.S.T.M. Standard Method of Test D 698-45.  
 (b) No construction is permitted in filled areas where the relative density of compaction is less than 80%.  
 (c) If the relative density of compaction is less than 90%, all main line and house laterals shall be covered per S-104, Case II, special base course per S-103, Case III, special Manhole Bases per S-104 are required.  
 (d) If the relative density of compaction is 90% or greater, the special provisions in (c) are not required.
  18. All state and local trench safety orders will be rigidly enforced.

COLLECT CHARGES  
 AS INDICATED  
*American Earth*

NOTE:  
 GRADES TO WHICH THIS IMPROVEMENT IS TO BE CONSTRUCTED ARE SHOWN ON PLANS AND PROFILES. GRADE POINTS FOR TOP OF CURBS, CENTER LINE OF STREETS, OR CENTER LINE OF ALLEYS ARE SHOWN BY CIRCLES ON PROFILES. AT ALL POINTS BETWEEN DESIGNATED POINTS THE GRADE SHALL BE ESTABLISHED SO AS TO CONFORM TO A STRAIGHT LINE DRAWN BETWEEN SAID DESIGNATED POINTS. ELEVATIONS ARE IN FEET ABOVE U.S.C. & G.S. SEA LEVEL DATUM OF 1929. THE DRAWING AND THE DATA HEREON ARE HEREBY MADE A PART OF THE SPECIFICATIONS. WORK SHALL BE CONSTRUCTED ACCORDING TO STANDARD SPECIFICATIONS DATED MAY 22, 1962 ON FILE IN THE OFFICE OF THE COUNTY ENGINEER AND SHALL BE PROSECUTED ONLY IN THE PRESENCE OF THE COUNTY ENGINEER. BEFORE WORK CAN BE STARTED, THE CONTRACTOR MUST OBTAIN A PERMIT TO EXCAVATE IN COUNTY STREETS FROM THE L.A. COUNTY ROAD DEPT., DISTRICT OFFICE AND PAY A FEE TO THE COUNTY ENGINEER, ROOM 302, COUNTY ENGINEERING BUILDING, 108 WEST SECOND STREET OR *Los Angeles - Gardena - Gardena Valley* REGIONAL OFFICE, SUFFICIENT TO COVER THE COST OF CONSTRUCTION INSPECTION AND RECORD PLANS. APPROVAL OF THIS PLAN BY THE COUNTY OF LOS ANGELES DOES NOT CONSTITUTE A REPRESENTATION AS TO THE ACCURACY OF THE LOCATION OR OF THE EXISTENCE OR NON-EXISTENCE OF ANY UNDERGROUND UTILITY PIPE, OR STRUCTURE WITHIN THE LIMITS OF THIS PROJECT. THIS NOTE APPLIES TO ALL PAGES. IF WORK IS TO BE DONE IN A STATE HIGHWAY, A PERMIT MUST BE OBTAINED FROM THE STATE OF CALIFORNIA, DIVISION OF HIGHWAYS, 120 SOUTH SPRING STREET, LOS ANGELES, CALIFORNIA.

COUNTY OF LOS ANGELES, CALIFORNIA  
 JOHN A. LAMBIE, COUNTY ENGINEER  
 APPROVED BY *J.G. Skand* ASSISTANT SANITATION ENGINEER  
 SUBMITTED BY *J.C. Kausung* REGIONAL ENGINEER  
 CHECKED BY *Samuel J. Nish* REG. C.E. NO. 10653  
 LAS VIRGENES MUNICIPAL WATER DISTRICT  
 APPROVED BY *L. A. Denton* OFFICE ENGINEER

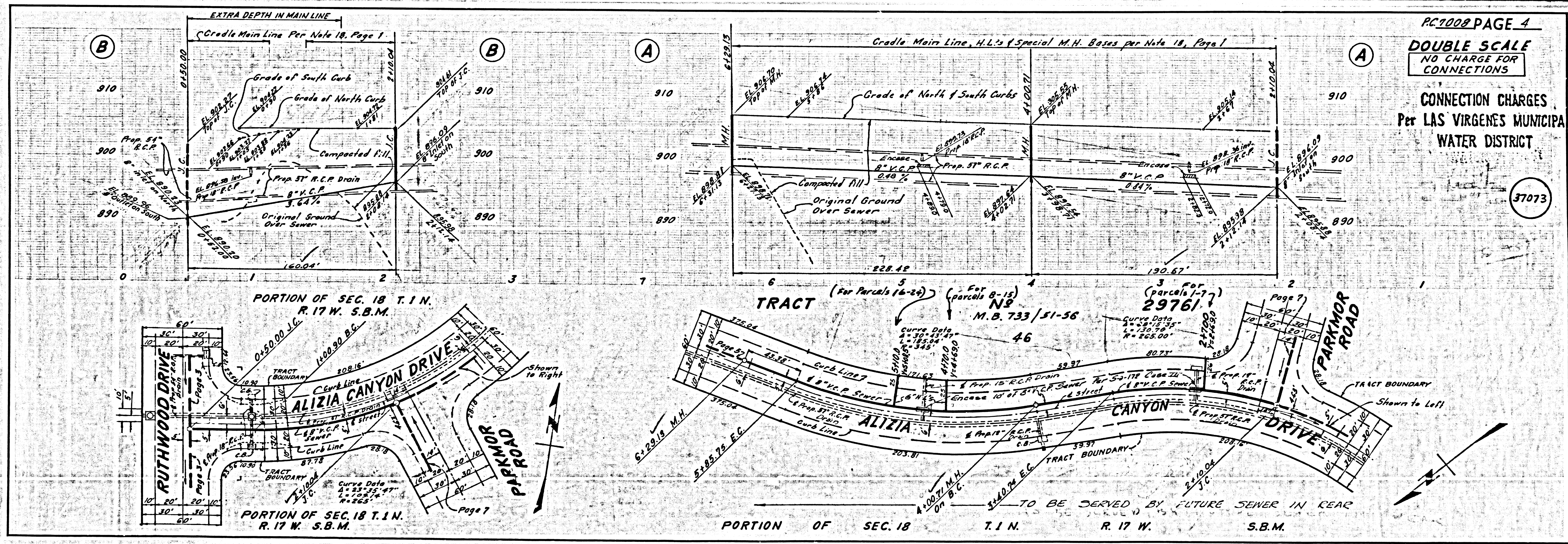
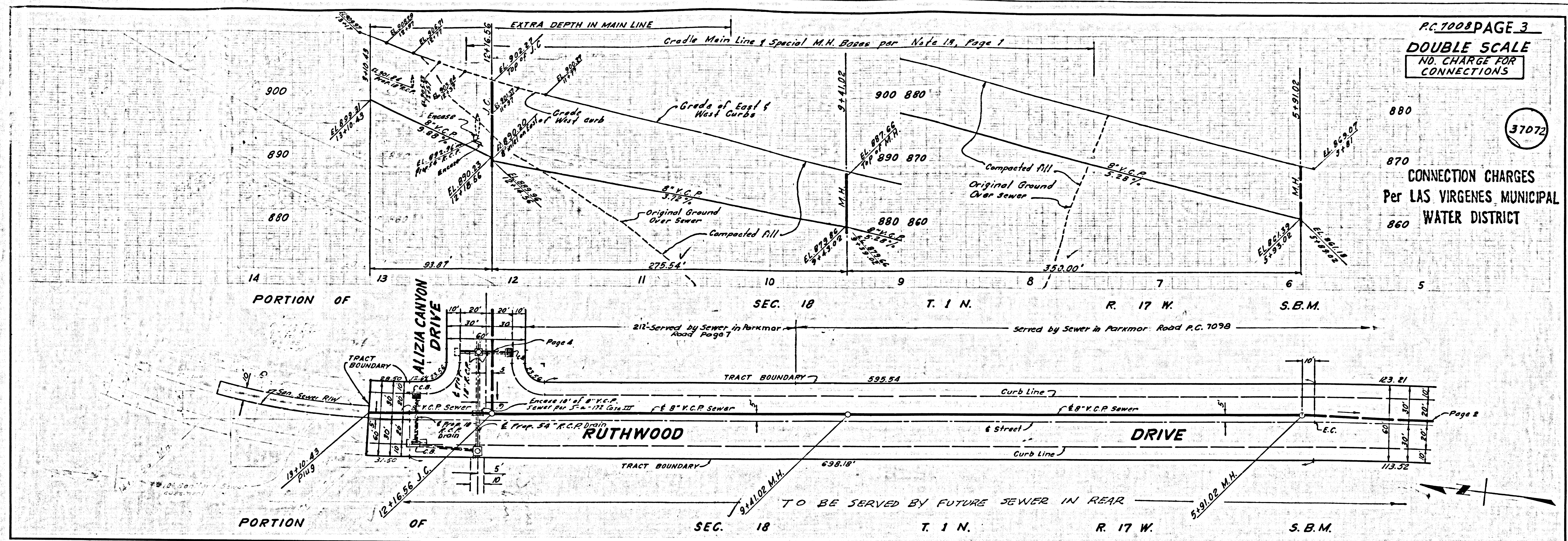
J.N. 036331



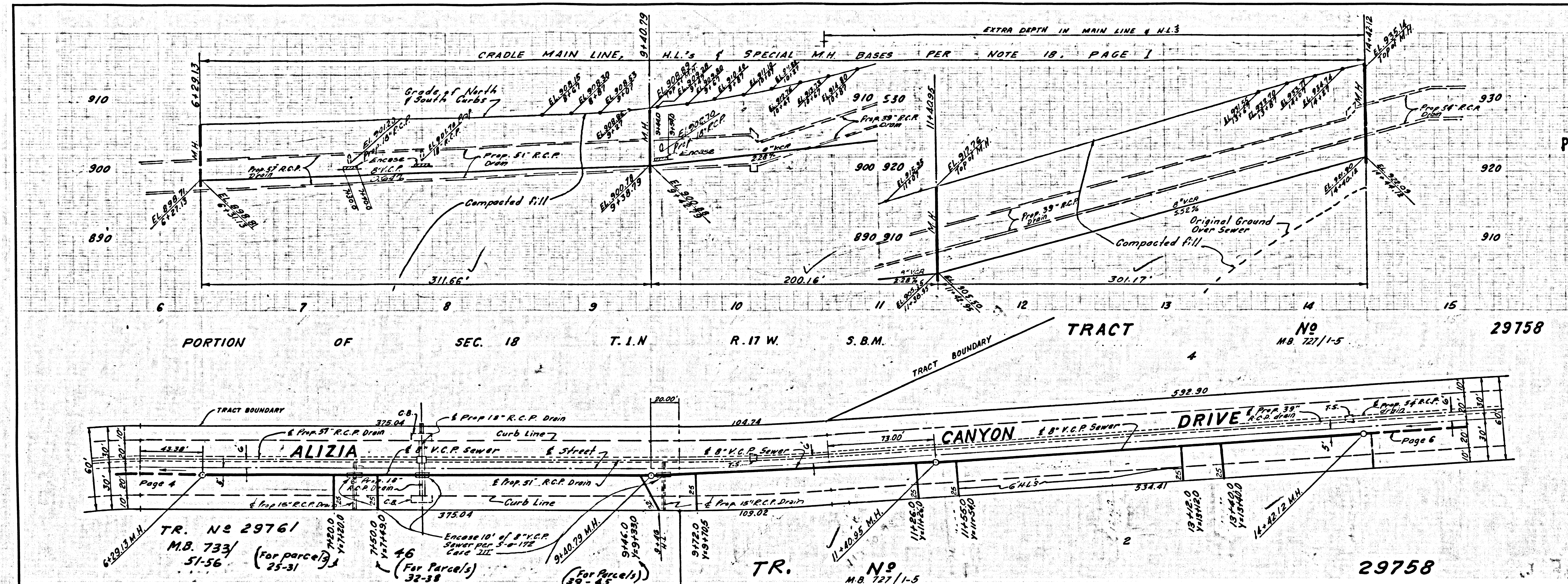
P.C. 7008 PAGE 2  
 DOUBLE SCALE  
 NO CHARGE FOR CONNECTIONS

CONNECTION CHARGES  
 Per LAS VIRGENES MUNICIPAL WATER DISTRICT  
 37071







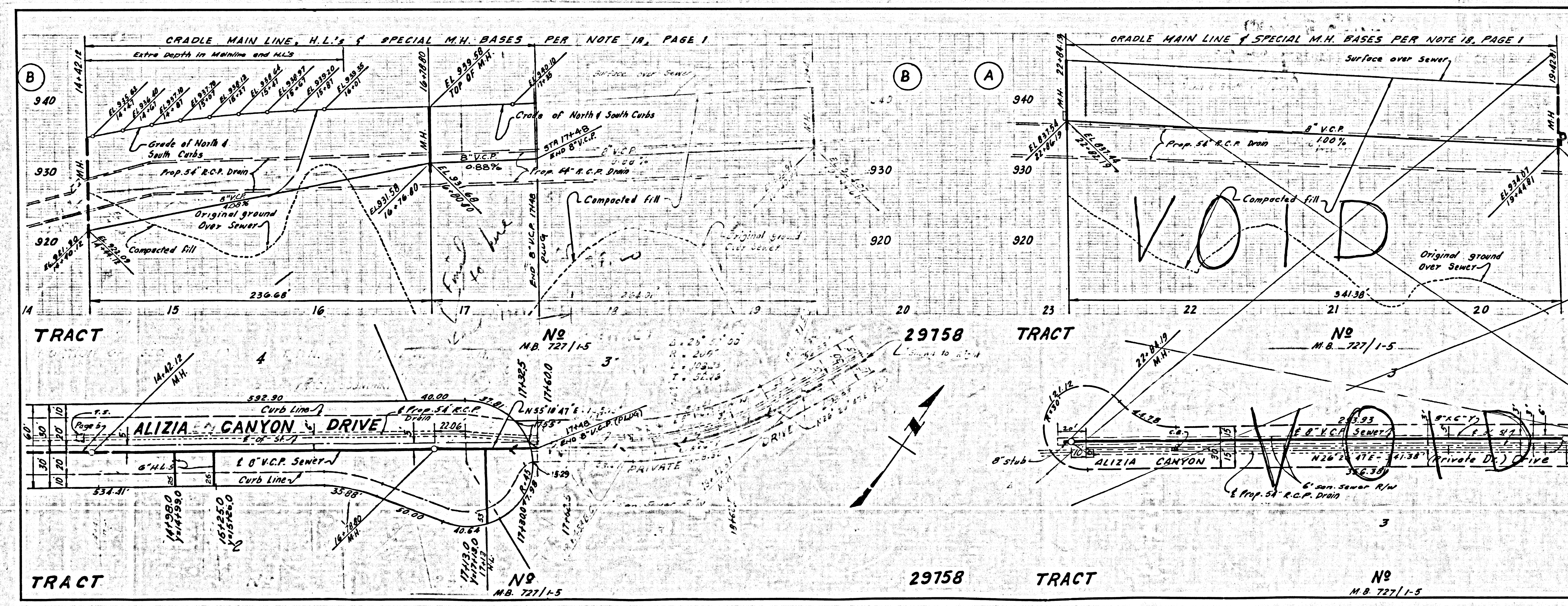


PC. 7008 PAGE 5  
**DOUBLE SCALE**  
 NO CHARGE FOR CONNECTIONS

CONNECTION CHARGES  
 Per LAS VIRGENES MUNICIPAL WATER DISTRICT

37074

800' 0\"/>



PC. 7008 PAGE 6  
**DOUBLE SCALE**  
 NO CHARGE FOR CONNECTIONS

CONNECTION CHARGES  
 Per LAS VIRGENES MUNICIPAL WATER DISTRICT

37075

75

U.S.G.P. 1916 L.A. COUNTY WATER DISTRICT NO. 1 & 2, 3, 4, 5, 6, 7, 8, 9, 10, 11, 12, 13, 14, 15, 16, 17, 18, 19, 20, 21, 22, 23, 24, 25, 26, 27, 28, 29, 30, 31, 32, 33, 34, 35, 36, 37, 38, 39, 40, 41, 42, 43, 44, 45, 46, 47, 48, 49, 50, 51, 52, 53, 54, 55, 56, 57, 58, 59, 60, 61, 62, 63, 64, 65, 66, 67, 68, 69, 70, 71, 72, 73, 74, 75, 76, 77, 78, 79, 80, 81, 82, 83, 84, 85, 86, 87, 88, 89, 90, 91, 92, 93, 94, 95, 96, 97, 98, 99, 100



P.C. 7008 PAGE 2  
**DOUBLE SCALE**  
 NO CHARGE FOR  
 CONNECTIONS

37076

CONNECTION CHARGES  
 Per LAS VIRGENES MUNICIPAL  
 WATER DISTRICT

