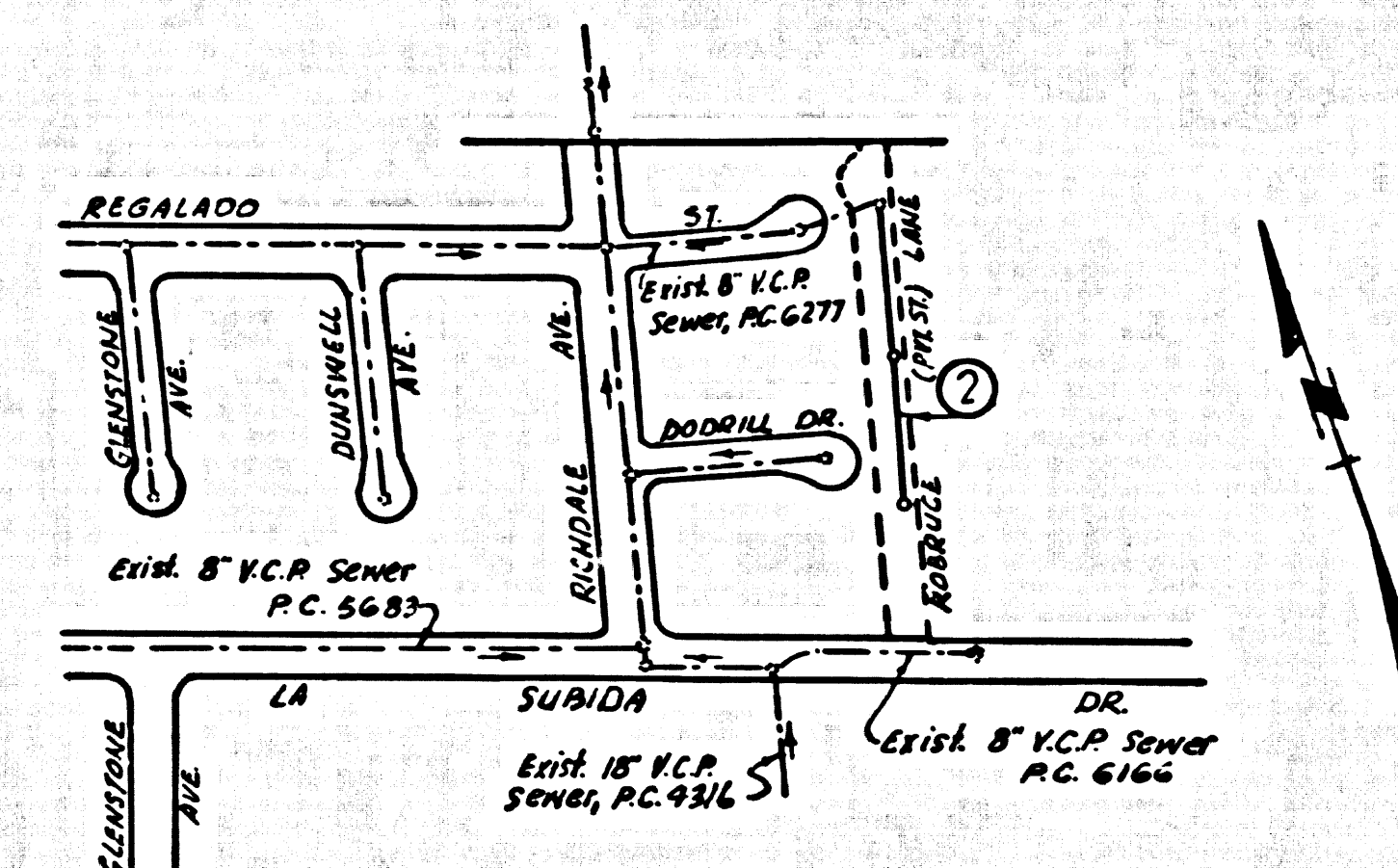


B.M. S.G. 1G1G ELEV. 196.986
 Co. sur. Mon. in well on approx. E of Los
 Altos Drive 63' N. of Hacienda Blvd.
 marked "B.M. 389, 1954 RE 1963"
 BENCHMARK QUAD. 1955



INDEX MAP
 ROBRUCE LANE (PVT. ST.)
 SCALE: 1"=300'
 P.C. 7010

LA PUENTE BLDG. DIST. NO. 2

- NOTES:
1. PROFILE STAKES ON THE PROPERTY LINE OR PROPERTY LINES PRODUCED AT RIGHT ANGLES TO THE SEWER LINE AT THE CENTER LINE OF EACH MANHOLE.
 2. NO REPRESENTATIVE OF THE COUNTY ENGINEER WILL SURVEY OR LAY OUT ANY PORTION OF THE WORK.
 3. THE PRIVATE ENGINEER SHALL FURNISH THE COUNTY ENGINEER WITH GRADE SHEETS AND STATIONING FOR ALL HOUSE LATERALS AND Y BRANCHES AND SHALL PROVIDE STAKES FOR THEM AT THEIR PROPER LOCATIONS WITH STATIONING PLAINLY MARKED. ALL HOUSE LATERALS SHALL BE CONSTRUCTED AT A STRAIGHT ALIGNMENT AT RIGHT ANGLES FROM THE MAIN LINE SEWER EXCEPT AS SHOWN ON THE PLANS. HOUSE LATERALS FROM CHIMNEYS SHALL NOT HAVE AN ANGLE OF LESS THAN 45° WITH THE MAIN LINE SEWER. ANY CHANGE IN ALIGNMENT SHALL BE REQUESTED IN WRITING BY THE PRIVATE ENGINEER.
 4. THE PRIVATE ENGINEER SHALL FURNISH THE HOUSE LATERAL DEPTH AT THE PROPERTY LINE BELOW THE TOP OF CURB ELEVATION FOR EACH HOUSE LATERAL ON THE GRADE SHEET.
 5. NO REVISIONS SHALL BE MADE IN THESE PLANS WITHOUT THE APPROVAL OF THE COUNTY ENGINEER.
 6. THE CONTRACTOR SHALL NOTIFY THE CONSTRUCTION DIVISION BY TELEPHONE, MADISON 9-4747, EXT. 8138, AT LEAST TWENTY-FOUR HOURS BEFORE STATING ANY WORK UNDER THE CONTRACT.
 7. MANHOLES SHALL BE BRICK SEWER STRUCTURES PER S-304. PRECAST CONCRETE MANHOLES PER S-325 OR S-173 MAY BE USED AS AN ALTERNATE IN LOCATIONS APPROVED BY THE COUNTY ENGINEER.
 8. USE STANDARD MANHOLE FRAMES AND COVERS, S-317.
 9. MANHOLE TOPS IN UNIMPROVED HIGHWAYS SHALL BE LEVEL WITH FINISHED GRADE.
 10. USE EXTRA STRENGTH PIPE, ALL PIPE IS STANDARD DEPTH.
 11. USE MECHANICAL COMPRESSION JOINTS FOR ALL V.C.P. JOINTS PER SPEC., SECT. 34, 12-1-64.
 12. WHERE OVER-OR-UNDER SITUATIONS OCCUR IN THE CONSTRUCTION OF THE SEWER, THE M.C.D. SHALL BE OVER-OR-UNDER UNLESS OTHERWISE SPECIFIED PER SECT. 33-3-16, OR MECHANICAL COMPRESSION JOINTS PER SECT. 34, 12-1-64.
 13. IF A POWER POLE IS WITHIN THREE FEET OF THE SEWER, THE SEWER SHALL BE ENCASED, PER S-373, CASE III, TWO FEET ON EITHER SIDE FROM THE POINT OF INTERFERENCE.
 14. IF DURING THE COURSE OF CONSTRUCTION IT IS DETERMINED THAT THERE IS LESS THAN FOUR FEET OF COVER OVER THE TOP OF A MAIN LINE OR HOUSE LATERAL V.C.P. SEWER WHICH IS NOT INDICATED ON THE PLANS, THE PIPE SHALL BE ENCASED PER S-373, CASE III, UNLESS OTHERWISE APPROVED BY THE COUNTY ENGINEER.
 15. UNIMPROVED HIGHWAYS SHALL BE CONSTRUCTED WITH DITCHES AS PROPOSED UNLESS OTHERWISE SPECIFIED PER SECT. 34, 12-1-64. RESURFACE ALL TRENCHES WITHIN PAVED AREAS TO MEET L.A. COUNTY ROAD DEPT. OR CALIFORNIA STATE HIGHWAY REQUIREMENTS IN ACCORDANCE WITH PERMITS.
 16. FOR ALLOWABLE DEATHS PER USE FORMULA NO. 1, 12-1-64, SPEC. SEC. 34.
 17. ALL STATE AND LOCAL TRENCH SAFETY ORDERS WILL BE RIGIDLY ENFORCED.

PROFILE ALIGNMENT AND GRADE OF P.C. 7010
 SANITARY SEWERS PAGE 1

TO BE CONSTRUCTED IN
 ROBRUCE LANE
 (PRIVATE STREET)
 PRIVATE CONTRACT NO. 7010

W.S. 38
 1 SHEET, 2 PAGES
 SCALE: VERT. 1"=4' HORIZ. 1"=40'
 MAY, 1964 36432
 PREPARED BY THE OFFICES OF
 OLSON SURVEYING SERVICE, 8022 TRISTAN DR., DONAYE

FOR LEGEND SEE PLAN NO. S-3-64

NOTE:
 GRADES TO WHICH THIS IMPROVEMENT IS TO BE CONSTRUCTED ARE SHOWN ON PLANS AND PROFILES. GRADE POINTS FOR TOP OF CURB, CENTER LINE OF STREETS, OR CENTER LINE OF ALLEYS ARE SHOWN BY CIRCLES ON PROFILES. AT ALL POINTS BETWEEN DESIGNATED ELEVATIONS ARE IN FEET ABOVE U.S.C. & G.S. MEAN SEA LEVEL DATUM OF 1929.
 THIS DRAWING AND THE DATA HEREON ARE HEREBY MADE A PART OF THE SPECIFICATIONS.
 COUNTY ENGINEER AND SHALL BE PROSECUTED ONLY IN THE PRESENCE OF THE COUNTY ENGINEER.
 ROAD DEPT., DISTRICT OFFICE NO. 12 AND DISTRICT OFFICE NO. 13, 12-1-64.
 CONSTRUCTION INSPECTION AND RECORD PLANS.
 APPROVAL OF THIS PLAN BY THE COUNTY OF LOS ANGELES DOES NOT CONSTITUTE A REPRESENTATION AS TO THE ACCURACY OF THE LOCATION OF OR THE EXISTENCE OR NON-EXISTENCE OF ANY UNDERGROUND UTILITY PIPE, OR STRUCTURE WITHIN THE LIMITS OF THIS PROJECT. THIS NOTE APPLIES TO ALL PAGES.
 IF WORK IS TO BE DONE IN A STATE HIGHWAY, A PERMIT MUST BE OBTAINED FROM THE STATE OF CALIFORNIA, DIVISION OF HIGHWAYS, 120 SOUTH SPRING STREET, LOS ANGELES, CALIFORNIA.

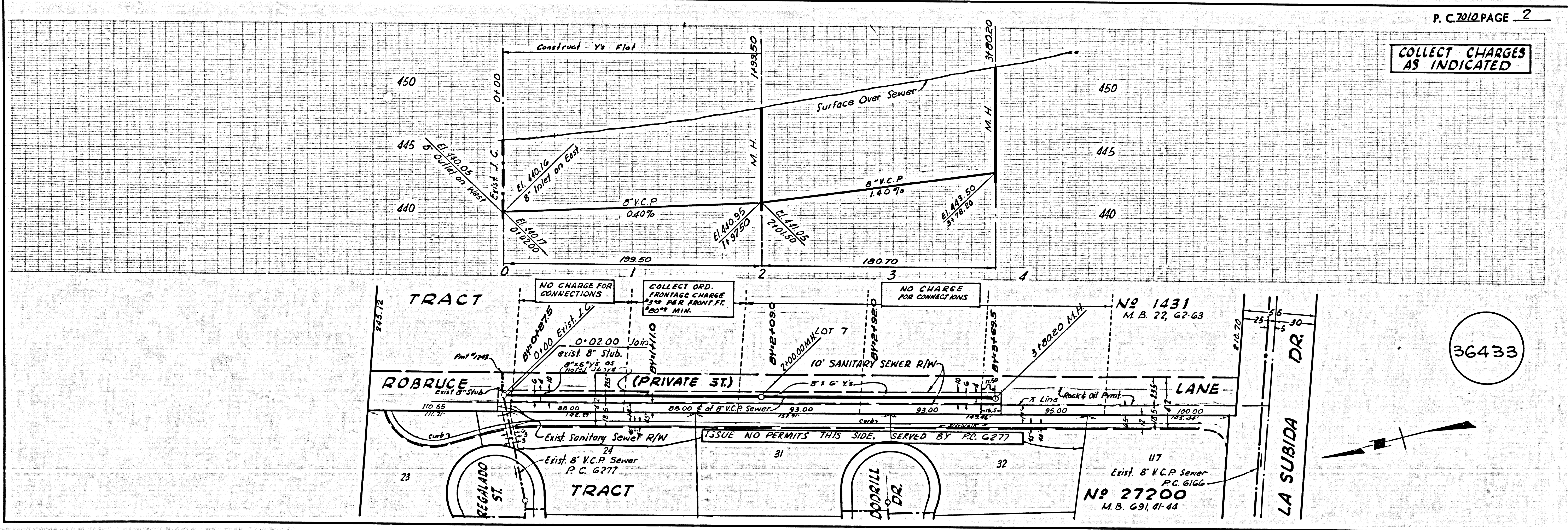
COUNTY OF LOS ANGELES, CALIFORNIA
 JOHN A. LAMBIE, COUNTY ENGINEER J. D. PARKHURST, CHIEF ENGINEER
 CO. SAN. DIST. NO. 21
 APPROVED BY: [Signature] APPROVED BY: [Signature]
 ASSISTANT SANITATION ENGINEER OFFICE ENGINEER

SUBMITTED BY: [Signature]
 SANITATION REGIONAL ENGINEER
 CHECKED BY: [Signature] 12-7-64
 REG. C.E. NO. 11639

COLLECT CHARGES AS INDICATED
 D.R. Olson 10-19-64

NO CONNECTIONS FOR THE DISPOSAL OF INDUSTRIAL WASTES SHALL BE MADE TO SEWERS SHOWN ON THESE DRAWINGS WITHOUT WRITTEN PERMISSION FROM THE CHIEF ENGINEER AND GENERAL MANAGER OF THE COUNTY SANITATION DISTRICTS.

J.N. 0369.32



COLLECT CHARGES AS INDICATED

36433