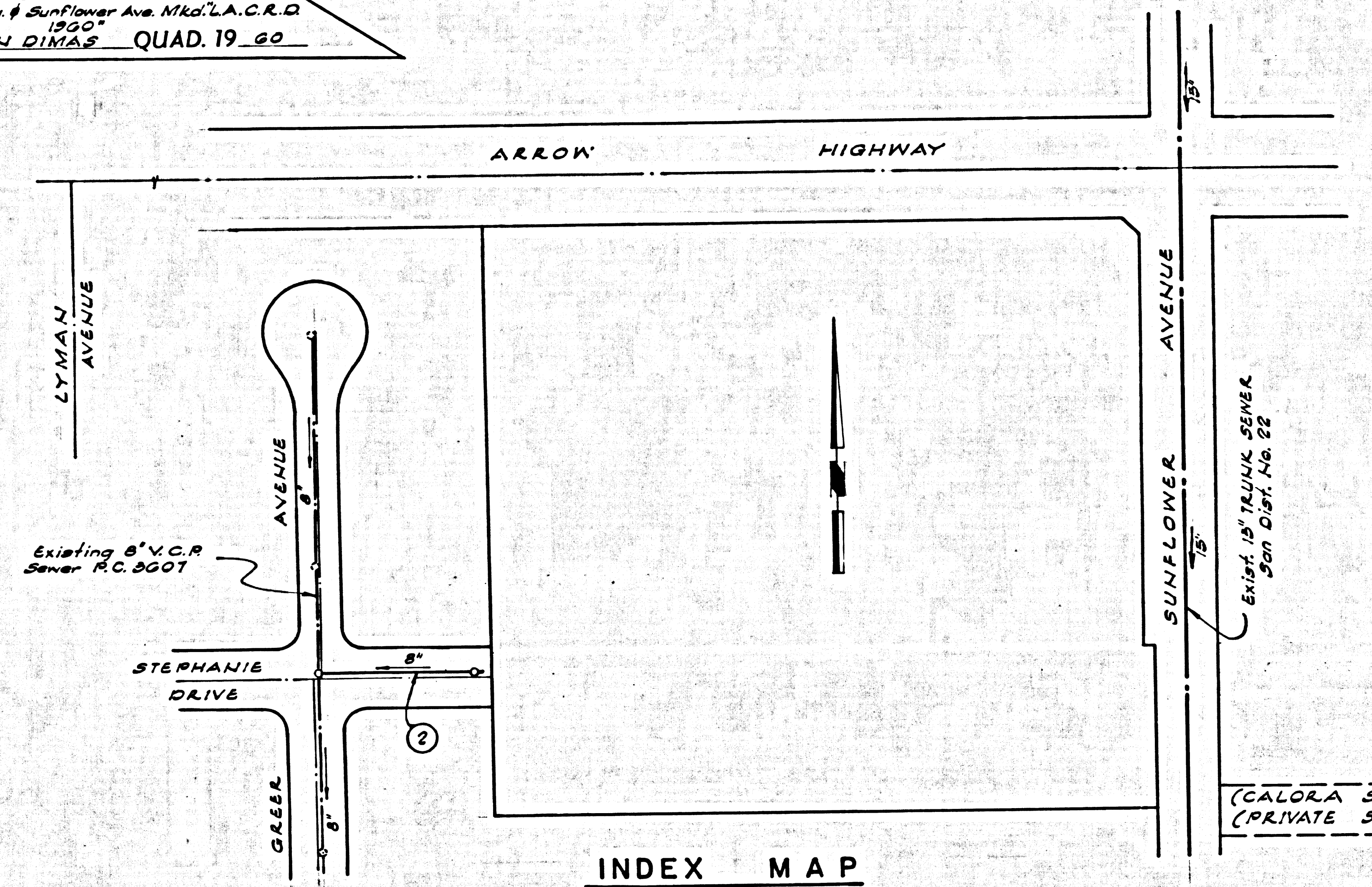


B.M. 5G.223A ELEV. 709.825
 R.d. Dept. B.M. Man. in well 8"
 down @ or near @ Int. Arrow
 Hwy. & Sunflower Ave. Mtd. L.A.C.R.D.
 1950
 SAN DIMAS QUAD. 19 20



INDEX MAP
 Scale: 1" = 100'
 P.C. 7013

SAN DIMAS BLDG. DIST. NO. 10

- NOTES:
1. PROPERTY STAKES ON THE PROPERTY LINE OR PROPERTY LINES PRODUCED AT RIGHT ANGLES TO THE SEWER LINE AT THE CENTER LINE OF EACH MANHOLE.
 2. NO REPRESENTATIVE OF THE COUNTY ENGINEER WILL SURVEY OR LAY OUT ANY PORTION OF THE WORK.
 3. THE PRIVATE ENGINEER SHALL FURNISH THE COUNTY ENGINEER WITH GRADE SHEETS AND STATIONING FOR ALL HOUSE LATERALS AND Y BRANCHES AND SHALL PROVIDE STAKES FOR THEM AT THEIR PROPER LOCATIONS WITH STATIONING PLAINLY MARKED. ALL HOUSE LATERALS SHALL BE CONSTRUCTED IN A STRAIGHT ALIGNMENT AT RIGHT ANGLES FROM THE MAIN LINE SEWER EXCEPT AS SHOWN ON THE PLANS. HOUSE LATERALS FROM CHIMNEYS SHALL NOT HAVE AN ANGLE OF LESS THAN 45° WITH THE MAIN LINE SEWER. ANY CHANGE IN ALIGNMENT SHALL BE REQUESTED BY WRITING BY THE PRIVATE ENGINEER.
 4. THE PRIVATE ENGINEER SHALL FURNISH THE HOUSE LATERAL DEPTH AT THE PROPERTY LINE BELOW THE TOP OF CURB ELEVATION FOR EACH HOUSE LATERAL ON THE GRADE SHEET.
 5. NO REVISIONS SHALL BE MADE IN THESE PLANS WITHOUT THE APPROVAL OF THE COUNTY ENGINEER.
 6. THE CONTRACTOR SHALL NOTIFY THE CONSTRUCTION DIVISION BY TELEPHONE, MADISON 9-4747, EXT. 8151, AT LEAST TWENTY-FOUR HOURS BEFORE STARTING ANY WORK UNDER THIS CONTRACT.
 7. MANHOLES SHALL BE BRICK SEWER STRUCTURES PER S-204. PRECAST CONCRETE MANHOLES PER S-138 OR S-473 MAY BE USED AS AN ALTERNATE IN LOCATIONS APPROVED BY THE COUNTY ENGINEER.
 8. USE STANDARD MANHOLE FRAMES AND COVERS: S-207.
 9. USE EXTRA STRENGTH PIPE. ALL PIPE IS STANDARD 0.875".
 10. USE MECHANICAL COMPRESSION JOINTS FOR ALL V.C.P. PER SPECT., SECS. 36 & 40. § 49.
 11. WHERE EVER GROUND WATER IS ENCOUNTERED DURING THE CONSTRUCTION OF THE SEWERS, THE V.C.P. JOINTS SHALL BE OF JOINT COMPOUND PER SPECT., SECS. 39 & 40, OR MECHANICAL COMPRESSION JOINTS PER SPECT., SEC. 36.
 12. IF A POWER POLE IS WITHIN THREE FEET OF THE SEWER, THE SEWER SHALL BE ENCASED, PER S-272, CASE II, TWO FEET ON EITHER SIDE FROM THE POINT OF INTERFERENCE.
 13. IF DURING THE COURSE OF CONSTRUCTION IT IS DETERMINED THAT THERE IS LESS THAN FOUR FEET OF COVER OVER THE TOP OF A MAIN LINE OR HOUSE LATERAL V.C.P. SEWER WHICH IS NOT INDICATED ON THE PLANS, THE PIPE SHALL BE ENCASED PER S-272, CASE III, UNLESS OTHERWISE APPROVED BY THE COUNTY ENGINEER.
 14. HOUSE LATERAL TO BE CONSTRUCTED WITH A SLOPE OF 1/8" PER FT. TO PROPERTY LINE.
 15. RESURFACE ALL TRINCHES WITHIN PAVED AREAS TO MEET L.A. COUNTY ROAD DEPT. OR CALIFORNIA STATE HIGHWAY REQUIREMENTS IN ACCORDANCE WITH PERMITS.
 16. FOR ALLOWABLE LEAKAGE TEST USE FORMULA NO. 1, PER SPECT., SEC. 54.
 17. ALL STATE AND LOCAL TECHNICAL SAFETY ORDERS WILL BE RIGIDLY ENFORCED.

APPROVED: *Walter B. Francis* 6-23-64
 INDUSTRIAL WASTE DIVISION DATE

COLLECT CHARGES AS INDICATED
Gerald P. Kenny 6-15-64

NO CONNECTIONS FOR THE DISPOSAL OF INDUSTRIAL WASTES SHALL BE MADE TO SEWERS SHOWN ON THESE DRAWINGS WITHOUT WRITTEN PERMISSION FROM THE CHIEF ENGINEER AND GENERAL MANAGER OF THE COUNTY SANITATION DISTRICTS.

PROFILE ALIGNMENT AND GRADE OF P.C. 7013
 SANITARY SEWERS PAGE 1
 TO BE CONSTRUCTED IN /

STEPHANIE DRIVE 5/8 GREER AVE.
 PRIVATE CONTRACT NO. 7013

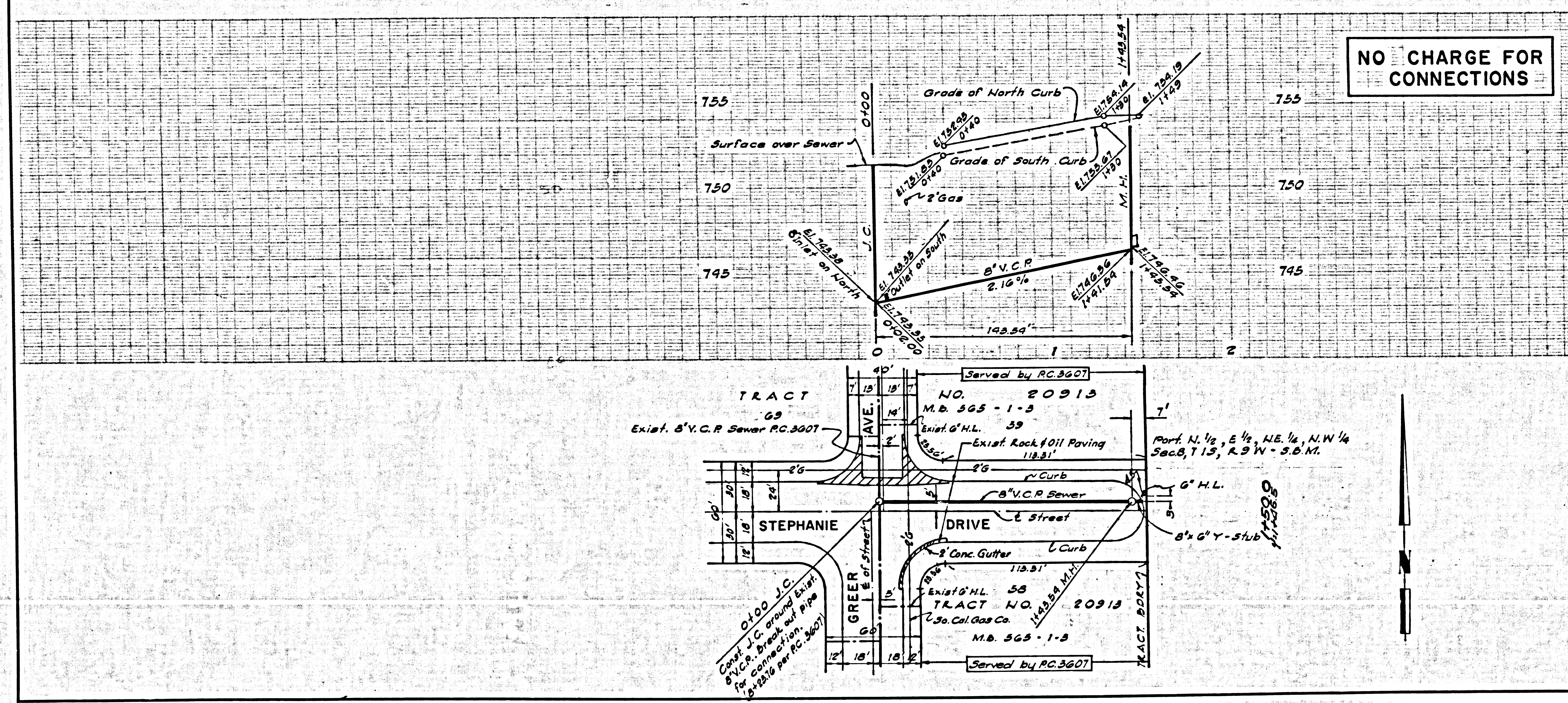
W.S. 48
 1 SHEET, 2 PAGES
 SCALE: VERT. 1" = 4' HORIZ. 1" = 40' MAY 1964 36045
 PREPARED IN THE OFFICES OF
 WALSH-FORKERT CIVIL ENGINEERS, INC.
 127 N. LANG AVE. WEST COVINA, CALIF.
 BY: *James R. Johnston, Jr.*
 REG. C. E. NO. 12752
 FOR LEGEND SEE PLAN NO. S-64

NOTES:
 GRADES TO WHICH THIS IMPROVEMENT IS TO BE CONSTRUCTED ARE SHOWN ON PLANS AND PROFILES. GRADE POINTS FOR TOP OF CURB, CENTER LINE OF STREETS, OR CENTER LINE OF ALLEYS ARE SHOWN BY CIRCLES ON PROFILES. AT ALL POINTS BETWEEN DESIGNATED POINTS THE GRADE SHALL BE ESTABLISHED SO AS TO CONFORM TO A STRAIGHT LINE DRAWN BETWEEN SAID DESIGNATED POINTS. ELEVATIONS ARE IN FEET ABOVE U.S.C. & G.S. SEA LEVEL DATUM OF 1929.
 THIS DRAWING AND THE DATA HEREON ARE HEREBY MADE A PART OF THE SPECIFICATIONS.
 SEWERS SHALL BE CONSTRUCTED ACCORDING TO STANDARD SPECIFICATIONS DATED MAY 23, 1958, ON FILE IN THE OFFICE OF THE COUNTY ENGINEER AND SHALL BE PRESCRIBED ONLY BY THE COUNTY ENGINEER.
 BEFORE WORK CAN BE STARTED, THE CONTRACTOR MUST OBTAIN A PERMIT TO EXCAVATE IN COUNTY STREETS FROM THE L.A. COUNTY ROAD DEPT., DISTRICT OFFICE NO. 1, AND PAY A FEE TO THE COUNTY ENGINEER, ROOM 305, COUNTY ENGINEERING BUILDING, 305 WEST SECOND STREET, LOS ANGELES, CALIF. REGIONAL OFFICE, SUFFICIENT TO COVER THE COST OF CONSTRUCTION INSPECTION AND PLANS.
 APPROVAL OF THIS PLAN BY THE COUNTY OF LOS ANGELES DOES NOT CONSTITUTE A REPRESENTATION AS TO THE ACCURACY OF THE LOCATION OF OR THE EXISTENCE OR NON-EXISTENCE OF ANY UNDERGROUND UTILITY PIPE, OR STRUCTURE WITHIN THE LIMITS OF THIS PROJECT. THIS NOTE APPLIES TO ALL PAGES.
 IF WORK IS TO BE DONE IN A STATE HIGHWAY, A PERMIT MUST BE OBTAINED FROM THE STATE OF CALIFORNIA, DIVISION OF HIGHWAYS, 128 SOUTH SPRING STREET, LOS ANGELES, CALIFORNIA.

COUNTY OF LOS ANGELES, CALIFORNIA
 JOHN A. LAMBLE, COUNTY ENGINEER J. D. PARKHURST, CHIEF ENGINEER
 CO. SAN. DIST. NO. 22
 APPROVED BY: *Richard E. Keller* ASSISTANT SANITATION ENGINEER APPROVED BY: *Northrup* OFFICE ENGINEER

CHECKED BY: *B.T. Harding* 6-25-64
 REG. C. E. NO. 11636

J.N. 0203.34



NO CHARGE FOR CONNECTIONS

P.C. 7013 PAGE 2

36046