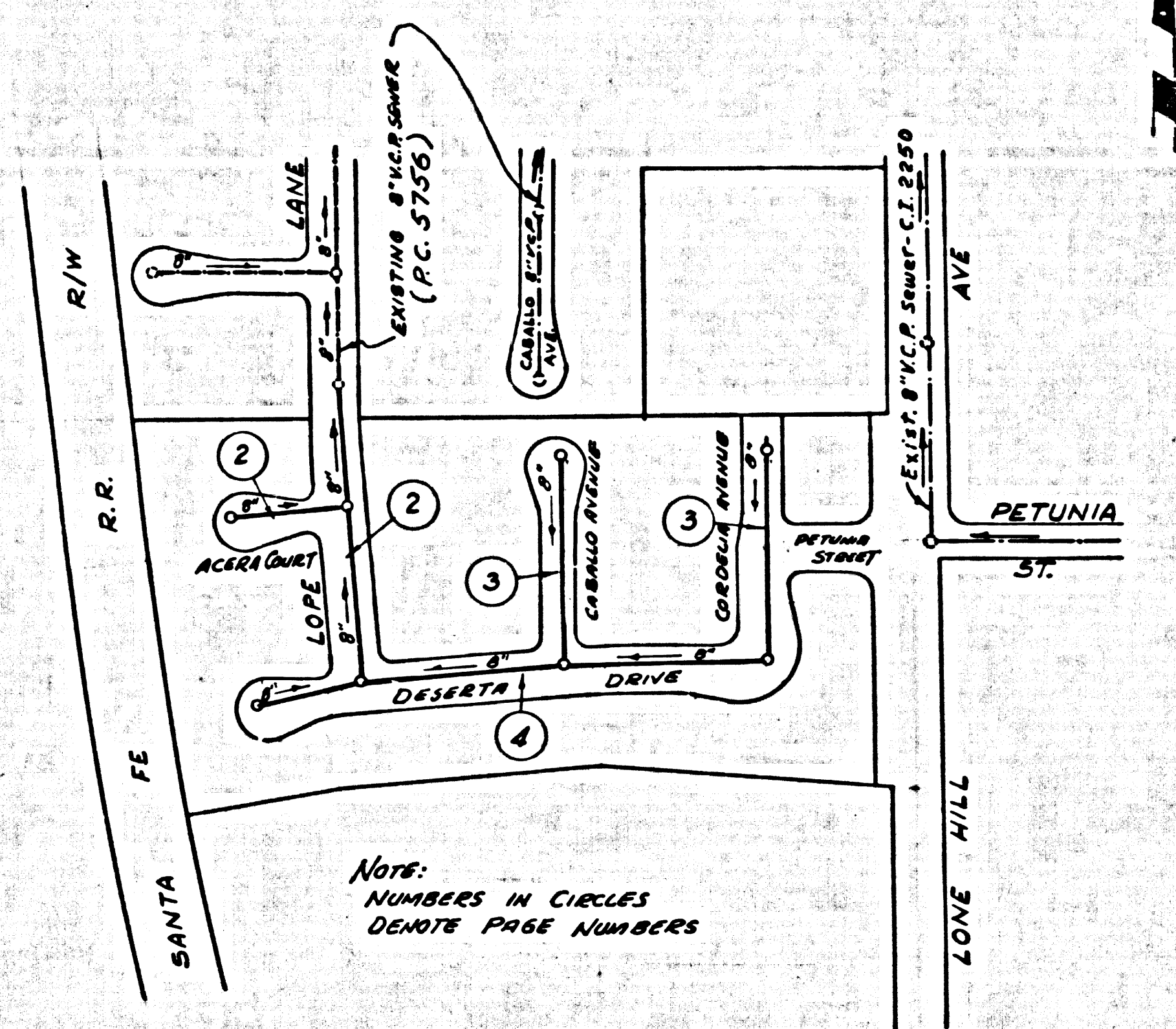


B.M. 56 1972 ELEV. 872.503
 C.S. MON. IN WELL 8" DI.
 NEAR E. INT. LOPE HILL AND
 GLADSTONE ST. MKD. CO. SUR. R.E. G3
 SAN DIMAS QUAD. 1960



INDEX MAP
 SCALE: 1" = 200'
 TRACT No. 29039
 P.C. 7015

SAN DIMAS BLDG. DIST. NO. 10

- NOTES:
1. PROVIDE STAKES ON THE PROPERTY LINE OR PROPERTY LINES PRODUCED AT RIGHT ANGLES TO THE SEWER LINE AT THE CENTER LINE OF EACH MANHOLE.
 2. NO REPRESENTATIVE OF THE COUNTY ENGINEER WILL SURVEY OR LAY OUT ANY PORTION OF THE WORK.
 3. THE PRIVATE ENGINEER SHALL FURNISH THE COUNTY ENGINEER WITH GRADE SHEETS AND STATIONING FOR ALL HOUSE LATERALS AND TRENCHES AND SHALL PROVIDE STAKES FOR THEM AT THEIR PROPER LOCATIONS WITH STATIONING PLAINLY MARKED. ALL HOUSE LATERALS SHALL BE CONSTRUCTED IN A STRAIGHT ALIGNMENT AT RIGHT ANGLES FROM THE MAIN LINE SEWER EXCEPT AS SHOWN ON THE PLANS. HOUSE LATERALS FROM CHIMNEYS SHALL NOT HAVE AN ANGLE OF LESS THAN 45° WITH THE MAIN LINE SEWER. ANY CHANGE IN ALIGNMENT SHALL BE REQUESTED BY WRITING BY THE PRIVATE ENGINEER.
 4. THE PRIVATE ENGINEER SHALL FURNISH THE HOUSE LATERAL DEPTH AT THE PROPERTY LINE BELOW THE TOP OF CURB ELEVATION FOR EACH HOUSE LATERAL ON THE GRADE SHEET.
 5. NO REVISIONS SHALL BE MADE IN THESE PLANS WITHOUT THE APPROVAL OF THE COUNTY ENGINEER.
 6. THE CONTRACTOR SHALL NOTIFY THE CONSTRUCTION DIVISION BY TELEPHONE, MADISON 9-4747, EXT. 812, AT LEAST TWENTY-FOUR HOURS BEFORE STARTING ANY WORK UNDER THIS CONTRACT.
 7. MANHOLES SHALL BE BRICK SEWER STRUCTURES PER S-3. PRECAST CONCRETE MANHOLES PER S-2 OR S-6 MAY BE USED AS AN ALTERNATE IN LOCATIONS APPROVED BY THE COUNTY ENGINEER.
 8. USE STANDARD MANHOLE FRAMES AND COVERS, S-18, EXCEPT AS NOTED.
 9. MANHOLE DECK SHALL BE APPROVED: SIZES OF 24" OR 30" IN DIAMETER ABOVE FINISHED GRADE.
 10. USE EXTRA STRENGTH PIPE. ALL PIPE IS STANDARD DEPTH EXCEPT AS NOTED.
 11. USE MECHANICAL COMPRESSION JOINTS FOR ALL V.C.P. JOINTS PER SPECS., SECS. 24 & 41.49.
 12. MINIMUM BURIED DEPTH SHALL BE INDICATED BY THE CONTRACTOR ON THE SEWER. THE V.C.P. JOINTS SHALL BE 18" FROM THE BOTTOM OF THE DECK TO THE TOP OF THE DECK. THE MINIMUM BURIED DEPTH SHALL BE 48" UNLESS OTHERWISE APPROVED BY THE COUNTY ENGINEER.
 13. IF A POWER POLE IS WITHIN THREE FEET OF THE SEWER, THE SEWER SHALL BE ENCASED, PER S-23 - 8" MIN. TWO FEET ON EITHER SIDE FROM THE POINT OF INTERFERENCE.
 14. IF DURING THE COURSE OF CONSTRUCTION IT IS DETERMINED THAT THERE IS LESS THAN FOUR FEET OF COVER OVER THE TOP OF A MAIN LINE OR HOUSE LATERAL V.C.P. SEWER WHICH IS NOT INDICATED ON THE PLANS, THE PIPE SHALL BE ENCASED PER S-23 - 8" MIN. UNLESS OTHERWISE APPROVED BY THE COUNTY ENGINEER.
 15. HOUSE LATERALS TO BE CONSTRUCTED WITH INVERTS AT PROPERTY LINE. 6" MIN. FEET BELOW CURB GRADE EXCEPT AS NOTED.
 16. RESURFACE ALL TRENCHES WITHIN PAVED AVENUES TO MEET L.A. COUNTY ROAD DEPT. OR CALIFORNIA STATE HIGHWAY REQUIREMENTS IN ACCORDANCE WITH FRAMES.
 17. FOR ALLOWABLE LEAKAGE TEST USE FORMULA NO. 2, SPECS., SEC. 64.
 18. ALL STATE AND LOCAL TRENCH SAFETY ORDERS WILL BE RIGIDLY ENFORCED.

NO CONNECTIONS FOR THE DISPOSAL OF INDUSTRIAL WASTES SHALL BE MADE TO SEWERS SHOWN ON THESE DRAWINGS WITHOUT WRITTEN PERMISSION FROM THE CHIEF ENGINEER AND GENERAL MANAGER OF THE COUNTY SANITATION DISTRICTS.

COLLECT CHARGES AS INDICATED
Oliver J. Christiansen

PROFILE ALIGNMENT AND GRADE OF
 SANITARY SEWERS PAGE 1

TRACT No 29039
 PRIVATE CONTRACT NO. 7015

W.S. 48
 2 SHEETS, 4 PAGES

37277

SCALE: HORIZ. 1" = 40' VERT. 1" = 4'
 JUN 1964
 PREPARED BY THE OFFICES OF
 PAUL E. IACONO & ASSOCIATES
 2330 WEST THIRD STREET
 LOS ANGELES, CALIFORNIA
 REG. C.E. NO. 7857

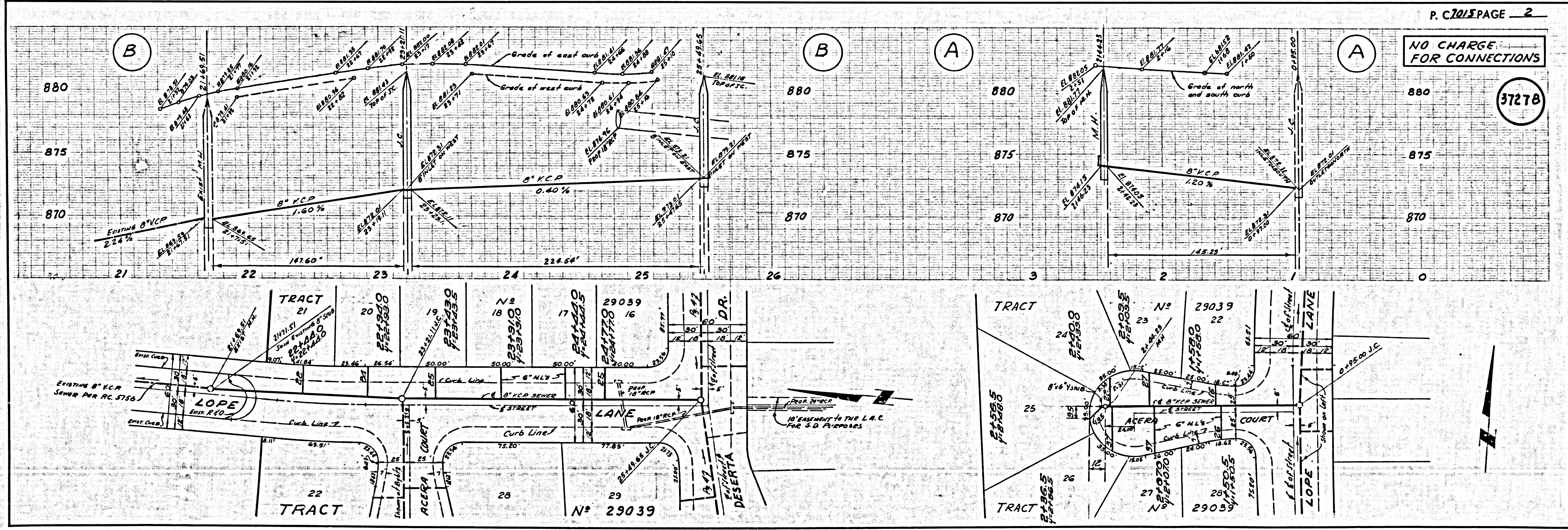
FOR LEGEND SEE PLAN NO. S-1

NOTE:
 GRADES TO WHICH THE IMPROVEMENT IS TO BE CONSTRUCTED ARE SHOWN ON PLANS AND PROFILES. GRADE POINTS FOR TOP OF CURBS, CENTER LINE OF STREETS, OR CENTER LINE OF ALLEYS ARE SHOWN BY CIRCLES ON PROFILES. AT ALL POINTS BETWEEN DESIGNATED ELEVATIONS ARE IN FEET ABOVE U.S.C. & G.S. SEA LEVEL DATUM OF 1929.
 THE DRAWING AND THE DATA HEREON ARE HEREBY MADE A PART OF THE SPECIFICATIONS.
 WORK SHALL BE CONSTRUCTED ACCORDING TO STANDARD SPECIFICATIONS DATED 1952, L.A. 1162, ON FILE IN THE OFFICE OF THE COUNTY ENGINEER AND SHALL BE PROSECUTED ONLY IN THE PRESENCE OF THE COUNTY ENGINEER.
 BEFORE WORK CAN BE STARTED, THE CONTRACTOR MUST OBTAIN A PERMIT TO EXCAVATE IN COUNTY STREETS FROM THE L.A. COUNTY ROAD DEPT., DISTRICT OFFICE NO. 1, 5th AND 7th STS., AND PAY A FEE TO THE COUNTY ENGINEER, ROOM 350, COUNTY ENGINEERING BUILDING, 1200 WEST SECOND STREET OR 5th AND 7th STS., AND PAY A FEE TO THE REGIONAL OFFICE, SUPERVISOR TO COVER THE COST OF CONSTRUCTION INSPECTION AND RECORD PLANS.
 APPROVAL OF THIS PLAN BY THE COUNTY OF LOS ANGELES DOES NOT CONSTITUTE A REPRESENTATION AS TO THE ACCURACY OF THE LOCATION OF OR THE EXISTENCE OR NON-EXISTENCE OF ANY UNDERGROUND UTILITY PIPE, OR STRUCTURE WITHIN THE LIMITS OF THIS PROJECT. THIS NOTE APPLIES TO ALL PAGES.
 IF WORK IS TO BE DONE AT A LOCATION WHERE A PERMIT MUST BE OBTAINED FROM THE STATE OF CALIFORNIA, DIVISION OF HIGHWAYS, 120 SOUTH SPRING STREET, LOS ANGELES, CALIFORNIA.

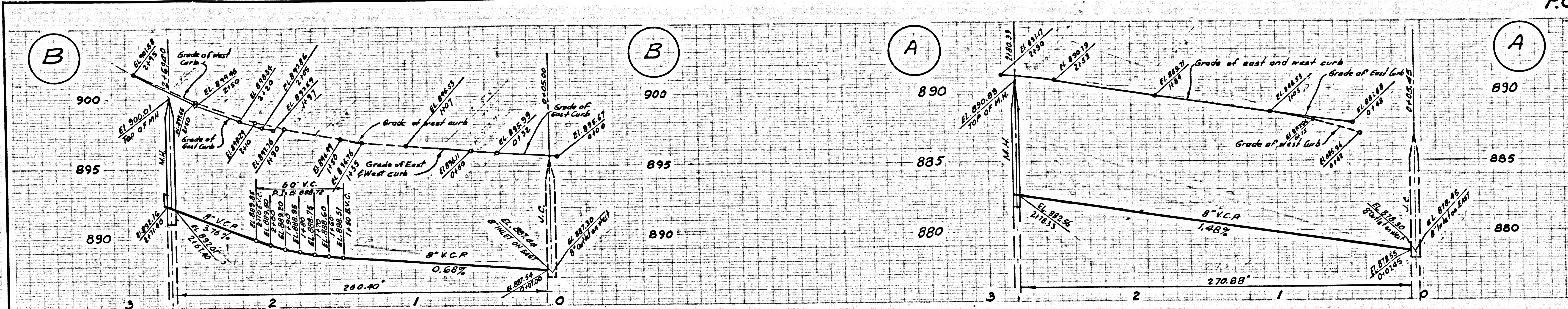
COUNTY OF LOS ANGELES, CALIFORNIA
 JOHN A. LAMBIE, COUNTY ENGINEER J. D. PARKHURST, CHIEF ENGINEER
 APPROVED BY: *Paul E. Iacono* ASSISTANT SANITATION ENGINEER APPROVED BY: *Oliver J. Christiansen* CHIEF ENGINEER

SUBMITTED BY: *Adam W. Krueger*
 SAN DIMAS REGIONAL ENGINEER
 CHECKED BY: *Spencer Lee 7-7-65*
 REG. C.E. NO. 10433

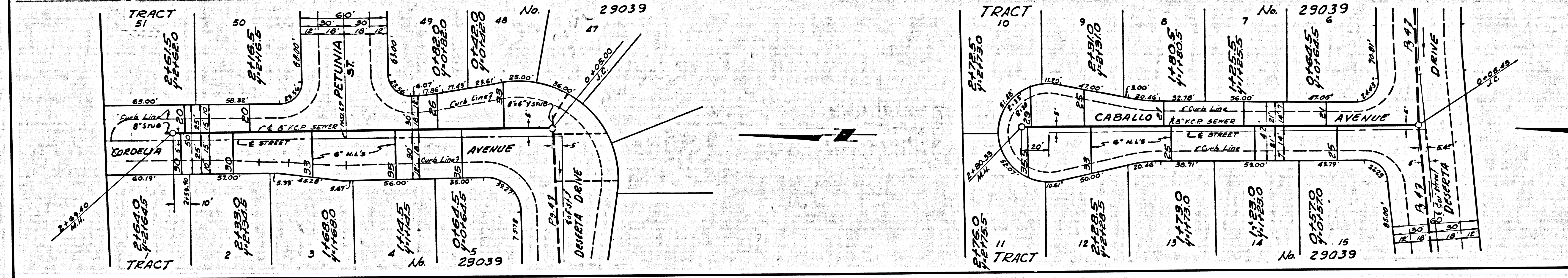
I.N. 036335



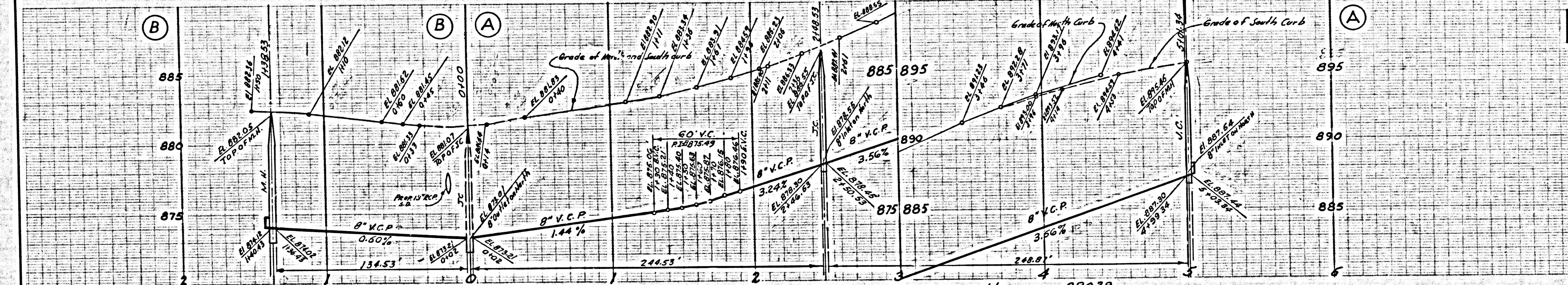
NO CHARGE FOR CONNECTIONS



37279



NO CHARGE FOR CONNECTIONS



37280

