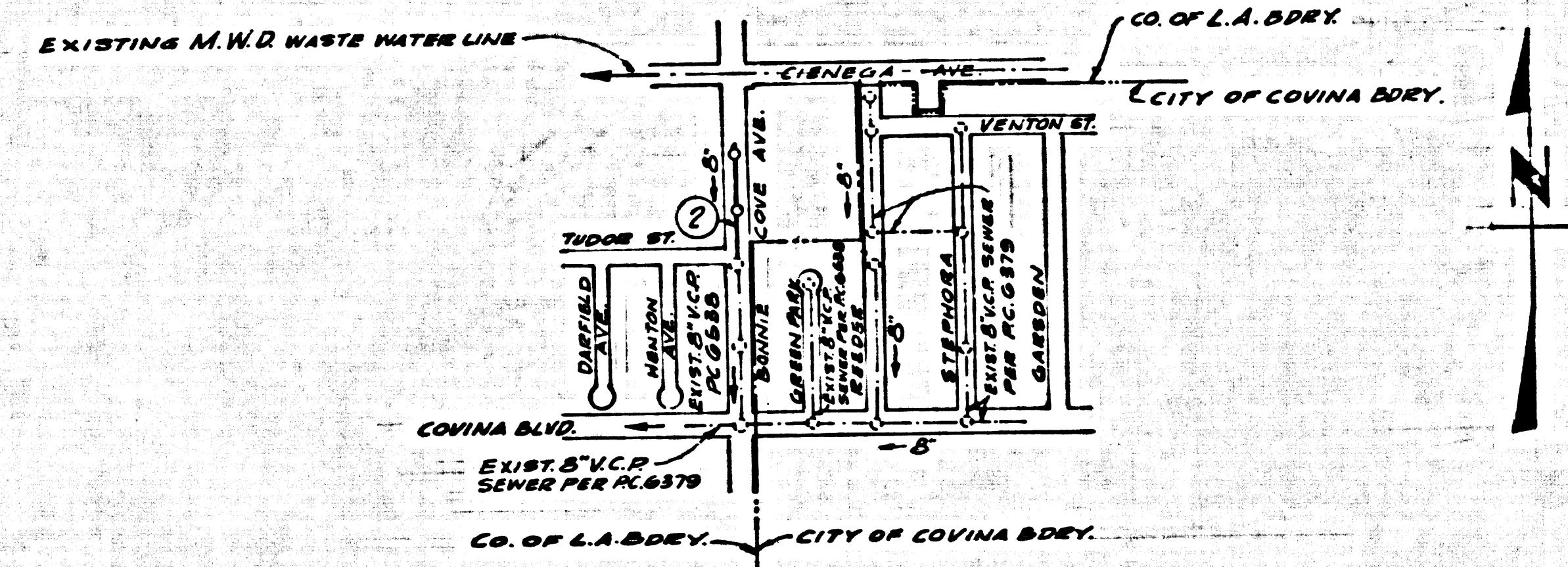


B.M. L.E. 117 ELEV. 701.780
 PER F.B. 2121 Pgs. 107 - BOLT
 SPIKE IN CURB, NORTH SIDE
 COVINA BLVD. & T. EAST &
 DARTFIELD PRODUCED.
 QUAD. 19



INDEX MAP
 SCALE: 1"=600'
 P.C. 7016

SAN DIMAS BLDG. DIST. NO. 10

- NOTES:
1. PROVIDE STAKES ON THE PROPERTY LINE OR PROPERTY LINES AT RIGHT ANGLES TO THE SEWER LINE AT THE CENTER LINE OF EACH MANHOLE.
 2. NO REPRESENTATIVE OF THE COUNTY ENGINEER WILL SURVEY OR LAY OUT ANY PORTION OF THE WORK.
 3. THE PRIVATE ENGINEER SHALL FURNISH THE COUNTY ENGINEER WITH GRADE SHEETS AND STATIONING FOR ALL HOUSE LATERALS AND T. BRANCHES AND SHALL PROVIDE STAKES FOR THEM AT THESE PROPER LOCATIONS WITH STATIONING PLAINLY MARKED. ALL HOUSE LATERALS SHALL BE CONSTRUCTED IN A STRAIGHT ALIGNMENT AT RIGHT ANGLES FROM THE MAIN LINE SEWER EXCEPT AS SHOWN ON THE PLANS. HOUSE LATERALS FROM CHIMNEYS SHALL NOT HAVE AN ANGLE OF LESS THAN 45° WITH THE MAIN LINE SEWER. ANY CHANGE IN ALIGNMENT SHALL BE REQUESTED IN WRITING BY THE PRIVATE ENGINEER.
 4. THE PRIVATE ENGINEER SHALL FURNISH THE HOUSE LATERAL DEPTH AT THE PROPERTY LINE BELOW THE TOP OF CURB ELEVATION FOR EACH HOUSE LATERAL ON THE GRADE SHEET.
 5. NO REVISIONS SHALL BE MADE IN THESE PLANS WITHOUT THE APPROVAL OF THE COUNTY ENGINEER.
 6. THE CONTRACTOR SHALL NOTIFY THE CONSTRUCTION DIVISION BY TELEPHONE, MADISON 9-6747, EXT. 8153, AT LEAST TWENTY-FOUR HOURS BEFORE STARTING ANY WORK UNDER THIS CONTRACT.
 7. MANHOLES SHALL BE BRICK SEWER STRUCTURES PER S-104. PRECAST CONCRETE MANHOLES PER S-135 OR S-173 MAY BE USED AS AN ALTERNATE IN LOCATIONS APPROVED BY THE COUNTY ENGINEER.
 8. USE STANDARD MANHOLE FRAMES AND COVERS, S-107.
 9. ALL TRENCHES SHALL BE EXCAVATED TO THE PROPER DEPTH AND SHALL BE BACKFILLED WITH STANDARD SAND.
 10. USE EXTRA STRENGTH PIPE. ALL PIPE IS STANDARD DEPTH.
 11. USE - 1/2" MECHANICAL COMPRESSION JOINTS FOR ALL V.C.P. 80000 PER SPEC'S, SECS. 36 & 48 & 69.
 12. WHERE EVER GROUND WATER IS ENCOUNTERED DURING THE CONSTRUCTION OF THE SEWERS, THE V.C.P. JOINTS SHALL BE OF JOINT COMPOUND PER SPEC'S, SECS. 33 & 48, OR MECHANICAL COMPRESSION JOINTS PER SPEC'S, SEC. 34.
 13. IF A POWER POLE IS WITHIN THREE FEET OF THE SEWER, THE SEWER SHALL BE ENCASED, PER S-172, CASE III, TWO FEET ON EITHER SIDE FROM THE POINT OF INTERFERENCE.
 14. IF DURING THE COURSE OF CONSTRUCTION IT IS DETERMINED THAT THERE IS LESS THAN FOUR FEET OF COVER OVER THE TOP OF A MAIN LINE OR HOUSE LATERAL V.C.P. SEWER WHICH IS NOT INDICATED ON THE PLANS, THE PIPE SHALL BE ENCASED PER S-172, CASE III, UNLESS OTHERWISE APPROVED BY THE COUNTY ENGINEER.
 15. HOUSE LATERAL TO BE CONSTRUCTED WITH INVERT AT PROPERTY LINE... 6" FEET BELOW CURB GRADE.
 16. RESURFACE ALL TRENCHES WITHIN PAVED AREAS TO MEET L.A. COUNTY ROAD DEPT. OR CALIFORNIA STATE HIGHWAY REQUIREMENTS IN ACCORDANCE WITH PERMITS.
 17. FOR ALLOWABLE LEAKAGE TEST USE FORMULA NO. 100... SPEC'S, SEC. 54.
 18. ALL STATE & LOCAL TRENCH SAFETY ORDINANCES WILL BE STRICTLY ENFORCED.

NO CONNECTIONS FOR THE DISPOSAL OF INDUSTRIAL WASTES SHALL BE MADE TO SEWERS SHOWN ON THESE DRAWINGS WITHOUT WRITTEN PERMISSION FROM THE CHIEF ENGINEER AND GENERAL MANAGER OF THE COUNTY SANITATION DISTRICTS.

COLLECT CHARGES AS INDICATED
Herald St. Kenny 8-7-64

PROFILE ALIGNMENT AND GRADE OF **P.C. 7016**
SANITARY SEWERS PAGE **1**
 TO BE CONSTRUCTED IN

BONNIE COVE AVENUE

PRIVATE CONTRACT NO. 7016

W.S. 43
 1 SHEET, 2 PAGES
 SCALE: VERT. 1"=4' HORIZ. 1"=40' JUNE 1964

36125

PREPARED IN THE OFFICE OF
PETREY & KNOWLES, ENGINEERS
 2713 W. VALLEY BLVD.
 ALHAMBRA, CALIF.
 BY: *Samuel H. Petrey*
 REG. C.E. NO. 8077

FOR LEGEND SEE PLAN NO. S-64

NOTE:
 GRADES TO WHICH THE IMPROVEMENT IS TO BE CONSTRUCTED ARE SHOWN ON PLANS AND PROFILES. GRADE POINTS FOR TOP OF CURBS, CENTER LINE OF STREETS, OR CENTER LINE OF ALLEYS ARE SHOWN BY CIRCLES ON PROFILES. AT ALL POINTS BETWEEN DESIGNATED POINTS THE GRADE SHALL BE ESTABLISHED SO AS TO CONFORM TO A STRAIGHT LINE DRAWN BETWEEN SAID DESIGNATED POINTS. ELEVATIONS ARE IN FEET ABOVE U.S.C. & G.S. MEAN LEVEL DATUM OF 1929.

COUNTY OF LOS ANGELES, CALIFORNIA
 JOHN A. LAMBIE, COUNTY ENGINEER J. D. PARKHURST, CHIEF ENGINEER
 CO. SAN. DIST. NO. 10
 APPROVED BY: *John A. Lambie* APPROVED BY: *J. D. Parkhurst*
 ASSISTANT SANITATION ENGINEER OFFICE ENGINEER

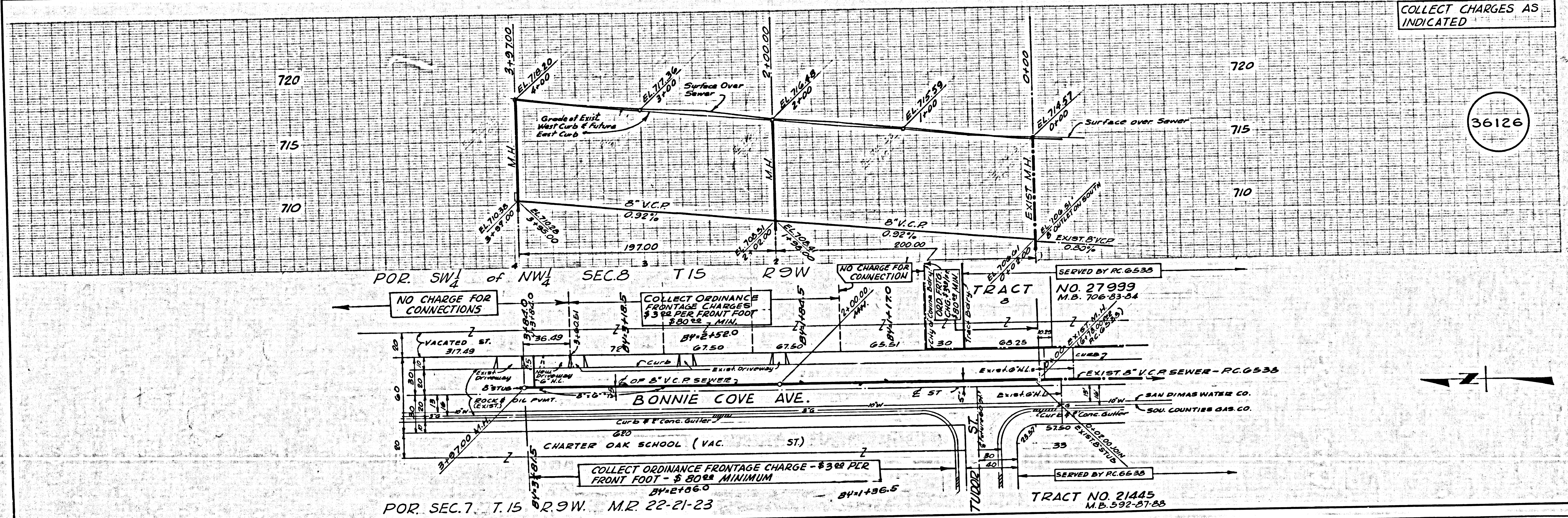
SUBMITTED BY: *Samuel H. Petrey*
 SAN DIMAS REGIONAL ENGINEER

CHECKED BY: *Ed. M. Worling* 8-10-64
 REG. C.E. NO. 11636

J.N. 0363-36

P.C. 7016 PAGE 2

COLLECT CHARGES AS INDICATED



L.A. COUNTY SEWER SHEET NO. 1 SOUTHERN CALIFORNIA BLUEPRINT CO. LA 507