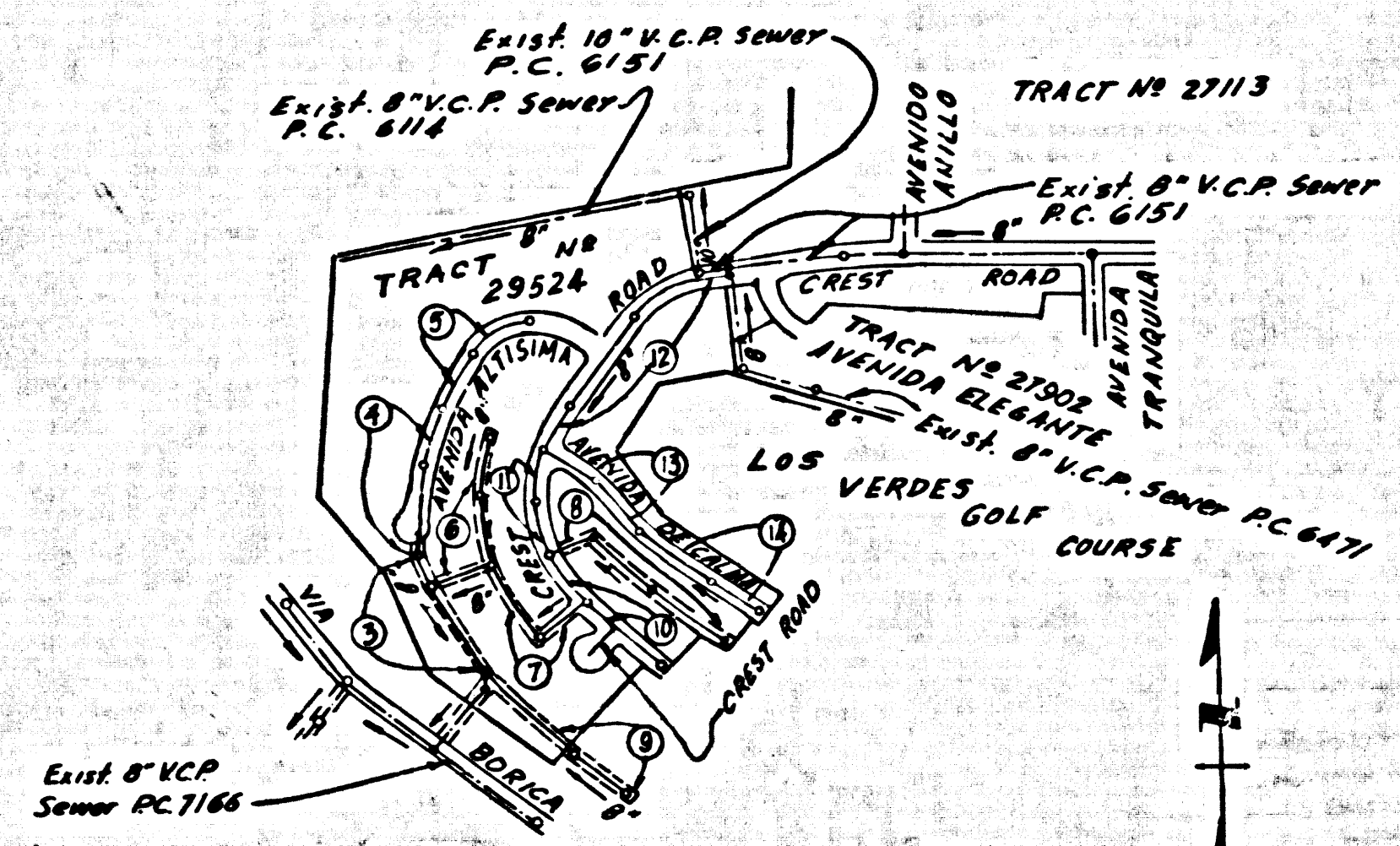
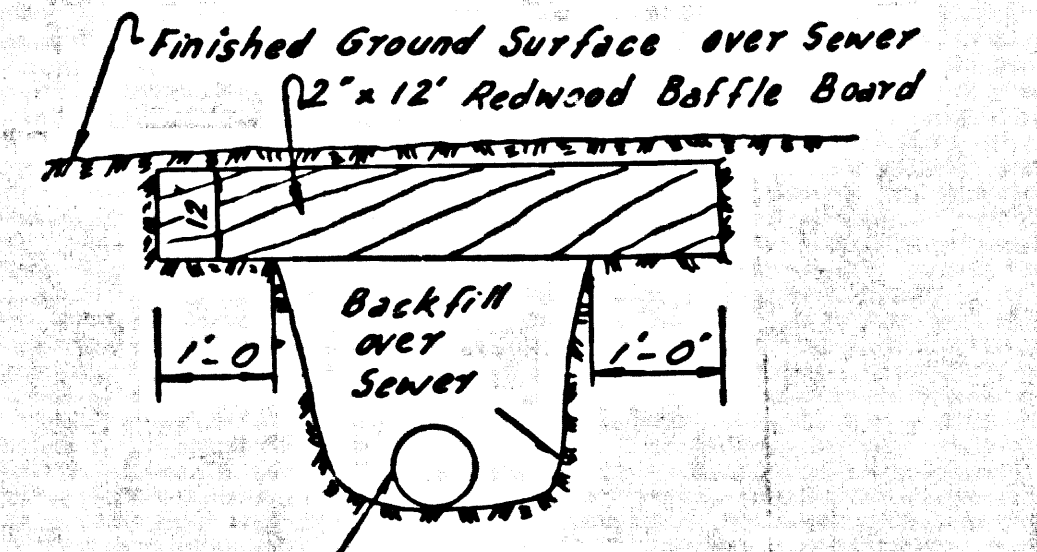


B.M. SY 4392-A ELEV. 931.686
 P.O.B.M. Top in S. Ob. Crest Road 2.2'E
 C.B. Opening 240'S. Crest Road 9
 2.01 E. 1/2 Hawthorne Blvd.
 PALOS VERDES QUAD. 1960



REVISION 5/1/63
 PAGE No 2 VOIDED
 PAGE No 3 changed to show
 Exist 8" V.C.P. per P.C. 7018
 Approved *[Signature]*
 R.C.E. No. 10253

2" x 12" REDWOOD BAFFLE BOARD DETAIL



1. Each end of baffle board will extend one foot into undisturbed ground.
2. Baffles will be so spaced that the top of the lower baffle shall be level with the bottom of the upper.
3. The upper layer of backfill to be 1 foot min. of top soil. Top soil shall be dumped in place and planted with mustard weed seed and adequately watered until growth is restored.

Revision added PAGE 2 Sta. 0+45 to Sta. 5+36.94 Changed M.H. tie PAGE 3 Changed at Sta. 0+00 from 17.08 to 18.71
 Approved *[Signature]*
 R.C.E. No. 10253

INDEX MAP
 TRACT No 29524
 P.C. 7018
 Scale: 1"=600'

NO CONNECTIONS FOR THE DISPOSAL OF INDUSTRIAL WASTES SHALL BE MADE TO SEWERS SHOWN ON THESE DRAWINGS WITHOUT WRITTEN PERMISSION FROM THE CHIEF ENGINEER AND GENERAL MANAGER OF THE COUNTY SANITATION DISTRICTS.

DOUBLE SCALE
LOMITA BLDG. DIST. NO. 12

- PROVIDE STAKES ON THE PROPERTY LINE OR PROPERTY LINES PRODUCED AT RIGHT ANGLES TO THE SEWER LINE AT THE CENTER LINE OF EACH MANHOLE.
2. NO REPRESENTATIVE OF THE COUNTY ENGINEER WILL SURVEY OR LAY OUT ANY PORTION OF THE WORK.
 3. THE PRIVATE ENGINEER SHALL FURNISH THE COUNTY ENGINEER WITH SHEETS AND STATIONING FOR ALL HOUSE LATERALS AND Y BRANCHES AND SHALL PROVIDE STAKES FOR THEM AT THEIR PROPER LOCATIONS WITH STATIONING PLAINLY MARKED. ALL HOUSE LATERALS SHALL BE CONSTRUCTED IN A STRAIGHT ALIGNMENT AT RIGHT ANGLES FROM THE MAIN LINE SEWER EXCEPT AS SHOWN ON THE PLANS. HOUSE LATERALS FROM CHIMNEYS SHALL NOT HAVE AN ANGLE OF LESS THAN 45° WITH THE MAIN LINE SEWER. ANY CHANGE IN ALIGNMENT SHALL BE REQUESTED IN WRITING BY THE PRIVATE ENGINEER.
 4. THE PRIVATE ENGINEER SHALL FURNISH THE HOUSE LATERAL DEPTH AT THE PROPERTY LINE BELOW THE TOP OF CURB ELEVATION PLUS EACH HOUSE LATERAL ON THE GRADE SHEET.
 5. NO REVISIONS SHALL BE MADE IN THESE PLANS WITHOUT THE APPROVAL OF THE COUNTY ENGINEER.
 6. THE CONTRACTOR SHALL NOTIFY THE CONSTRUCTION DIVISION BY TELEPHONE, MADISON 9-4747, EXT. 81581, AT LEAST TWENTY-FOUR HOURS BEFORE STARTING ANY WORK UNDER THIS CONTRACT.
 7. MANHOLES SHALL BE BRICK SEWER STRUCTURES PER S-104. PRECAST CONCRETE MANHOLES PER S-135 OR S-173 MAY BE USED AS AN ALTERNATE IN LOCATIONS APPROVED BY THE COUNTY ENGINEER.
 8. USE STANDARD MANHOLE FRAMES AND COVERS, S-117, EXCEPT AS NOTED.
 9. STANDARD TOPS IN UNIMPROVED RIGHTS-OF-WAY TO BE SIX INCHES ABOVE FINISHED GRADE.
 10. USE EXTRA STRENGTH PIPE. ALL PIPE IS STANDARD DEPTH EXCEPT AS NOTED.
 11. USE MINIMUM ALLOWABLE MECHANICAL COMPRESSION JOINTS FOR ALL V.C.P. JOINTS PER SPEC., SECS. 34 & 48 & 49.
 12. JOINTS SHALL BE BRICK OR MECHANICAL COMPRESSION JOINTS PER SPEC., SECS. 34 & 48 & 49.
 13. IF A POWER POLE IS WITHIN THREE FEET OF THE SEWER, THE SEWER SHALL BE INCASED, PER S-173, CASE III, TWO FEET ON EACH SIDE FROM THE POINT OF INTERFERENCE.
 14. IF DURING THE COURSE OF CONSTRUCTION IT IS DETERMINED THAT THERE IS LESS THAN FOUR FEET OF COVER OVER THE TOP OF A MAIN LINE OR HOUSE LATERAL V.C.P. SEWER WHICH IS NOT INDICATED ON THE PLANS, THE PIPE SHALL BE INCASED PER S-173, CASE III, UNLESS OTHERWISE APPROVED BY THE COUNTY ENGINEER.
 15. HOUSE LATERALS TO BE CONSTRUCTED WITH WHITES AT PROPERTY LINE. ... SET SHOW CURB GRADE EXCEPT AS NOTED.
 16. REINFORCE ALL TRENCHES WITHIN PAVED AREAS TO MEET L.A. COUNTY ROAD DEPT. OR CALIFORNIA STATE HIGHWAY REQUIREMENTS IN ACCORDANCE WITH PERMITS.
 17. FOR ALLOWABLE USAGE TEST USE FORMULA NO. ... SPEC. SEC. 54.
 18. ALL STAKE AND LICAL TRENCH MARKERS WILL BE RIGIDLY ENFORCED.
 19. CONSTRUCTION IN FILLER AREAS.
 20. IF AN ACCEPTABLE CERTIFICATION OF COMPACTION TEST RESULTS SHALL BE SUBMITTED TO THE CONSTRUCTION DIVISION. COMPACTION TESTS ARE TO BE MADE IN ACCORDANCE WITH A.S.T.M. STANDARD METHOD OF TEST D 493-61T.
 21. IF CONSTRUCTION IS REQUIRED IN CLEAR AREAS WHERE THE RELATIVE DENSITY OF COMPACTION IS LESS THAN 80%.
 22. IF THE RELATIVE DENSITY OF COMPACTION IS LESS THAN 80%, ALL MAIN LINE AND HOUSE LATERALS SHALL BE COVERED PER S-117 OR HAVE A SPECIAL BASE COURSE PER S-117, CASE III. SPECIAL MANHOLE BASES PER S-117 ARE REQUIRED.
 23. IF THE RELATIVE DENSITY OF COMPACTION IS 80% OR GREATER, THE SPECIAL PROVISIONS IN (C) ARE NOT REQUIRED.
 24. HOUSE STATIONS ARE SHOWN AT THE END OF HOUSE LATERALS. THE LOCATION OF SUCH HOUSE LATERALS SHALL NOT BE MOVED ABOVE THE STATION INDICATED.

COLLECT CHARGES AS INDICATED

PROFILE ALIGNMENT AND GRADE OF
SANITARY SEWERS PAGE 1

TRACT No 29524

PRIVATE CONTRACT NO. 7018

27 W.S.
 7 SHEETS, 14 PAGES
 SCALE: HORIZ. 1"=80' VERT. 1"=8'
 April 1964

PREPARED IN THE OFFICES OF
 Development Consultants, Inc.
 ENGINEERING DIVISION
 1001 W. California
 Los Angeles, California
 REG. C. E. NO. 8553

FOR LEGEND SEE PLAN NO. S-104

NOTE: GRADES TO WHICH THIS IMPROVEMENT IS TO BE CONSTRUCTED ARE SHOWN ON PLANS AND PROFILE. GRADE POINTS FOR TOP OF CURBS, CENTER LINE OF STREETS, OR CENTER LINE OF ALLEYS ARE SHOWN BY CIRCLES ON PROFILE. AT ALL POINTS BETWEEN DESIGNATED POINTS THE GRADE SHALL BE ESTABLISHED SO AS TO CONFORM TO A STRAIGHT LINE DRAWN BETWEEN SAID DESIGNATED POINTS. ELEVATIONS ARE IN FEET ABOVE U.S.C. & G.S. SEA LEVEL DATUM OF 1929.

THIS DRAWING AND THE DATA HEREON ARE HEREBY MADE A PART OF THE SPECIFICATIONS.

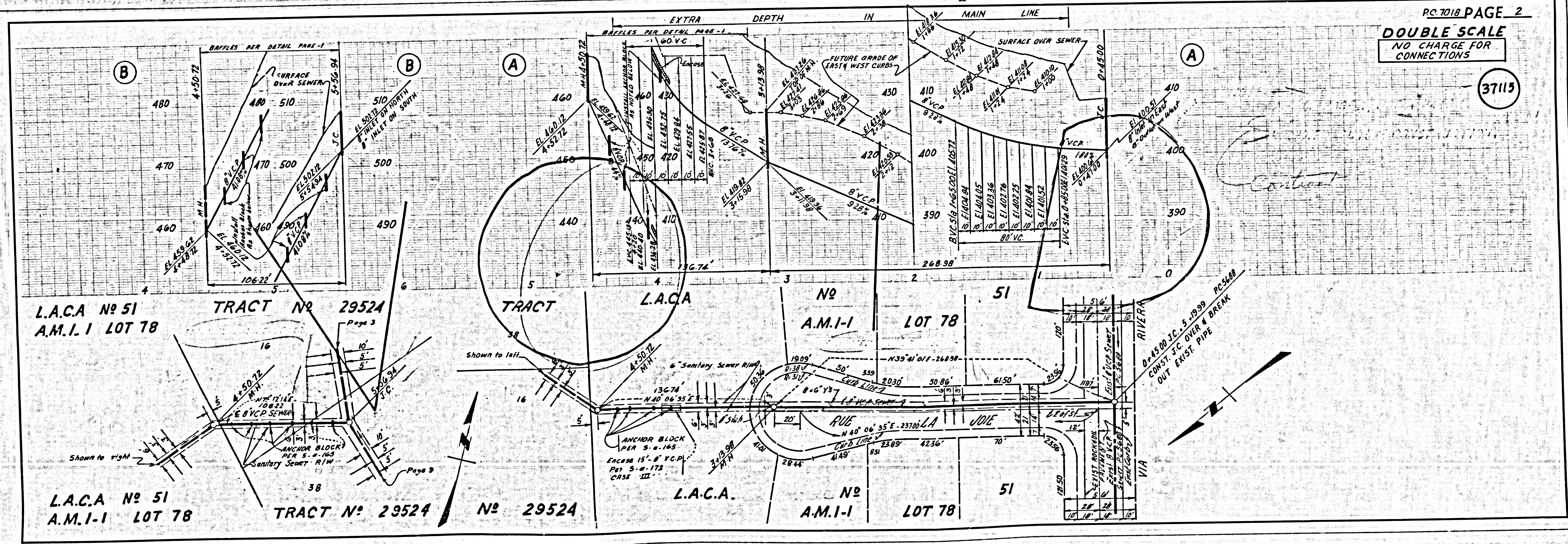
BEFORE WORK CAN BE STARTED, THE CONTRACTOR MUST OBTAIN A PERMIT TO EXCAVATE IN COUNTY STREETS FROM THE L.A. COUNTY ROAD DEPT., DISTRICT OFFICE NO. ... AND PAY A FEE TO THE COUNTY ENGINEER, ROOM 300, COUNTY ENGINEERING BUILDING, 100 WEST SECOND STREET, LOS ANGELES, CALIFORNIA. LOCAL OFFICE, SUFFICIENT TO COVER THE COST OF CONSTRUCTION INSPECTION AND RECORD PLANS.

APPROVAL OF THIS PLAN BY THE COUNTY OF LOS ANGELES DOES NOT CONSTITUTE A REPRESENTATION AS TO THE ACCURACY OF THE LOCATION OF OR THE EXISTENCE OR NON-EXISTENCE OF ANY UNDERGROUND UTILITY PIPE, OR STRUCTURE WITHIN THE LIMITS OF THE PROJECT. THIS NOTE APPLIES TO ALL SIZES.

IF WORK IS TO BE DONE IN A STATE HIGHWAY, A PERMIT MUST BE OBTAINED FROM THE STATE OF CALIFORNIA, DIVISION OF HIGHWAYS, 120 SOUTH SPRING STREET, LOS ANGELES, CALIFORNIA.

COUNTY OF LOS ANGELES, CALIFORNIA
 JOHN A. LAMBIE, COUNTY ENGINEER J. D. PARKHURST, CHIEF ENGINEER
 CO. SEAL
 APPROVED BY: *[Signature]* APPROVED BY: *[Signature]*
 SUBMITTED BY: *[Signature]* OFFICE ENGINEER
 CHECKED BY: *[Signature]* 7-15-64
 REG. C.E. NO. 10253

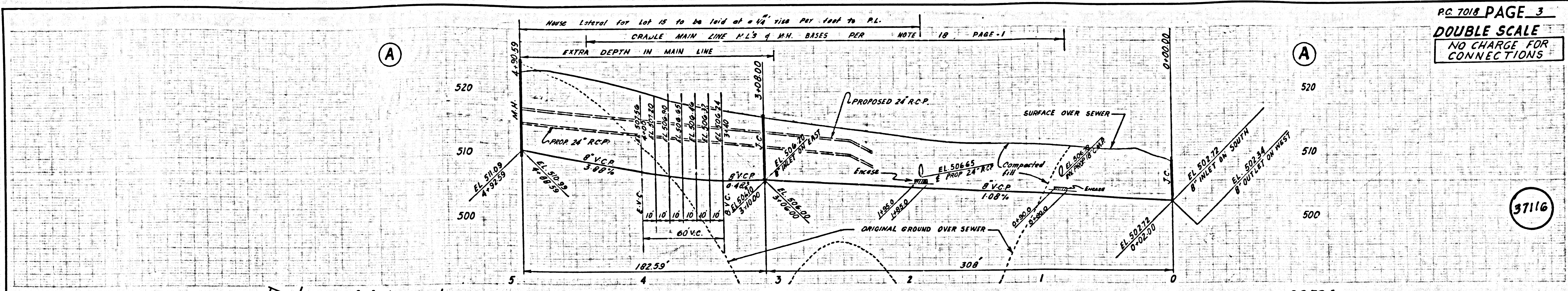
J.N. 2363.38



DOUBLE SCALE
 NO CHARGE FOR CONNECTIONS

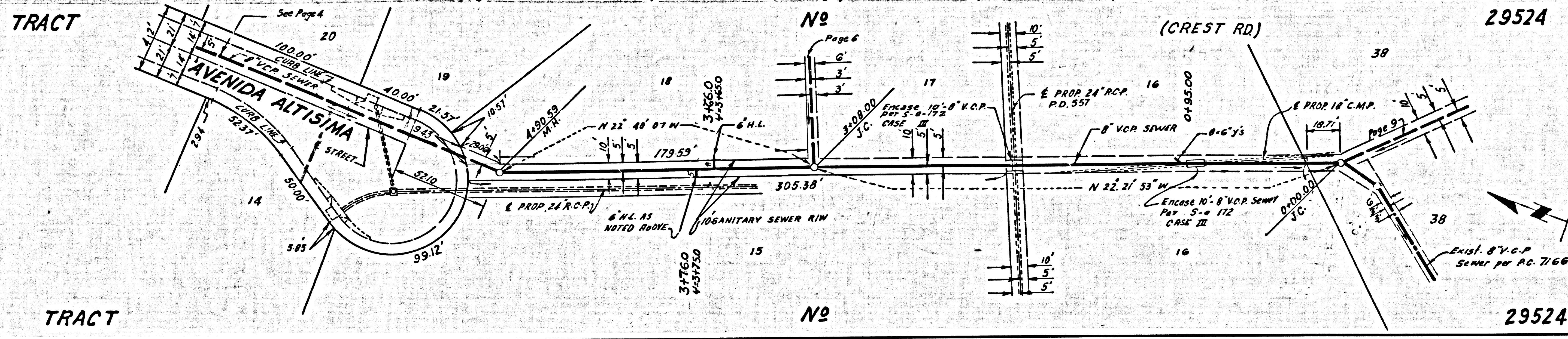
37115

P.C. 7018 PAGE 2



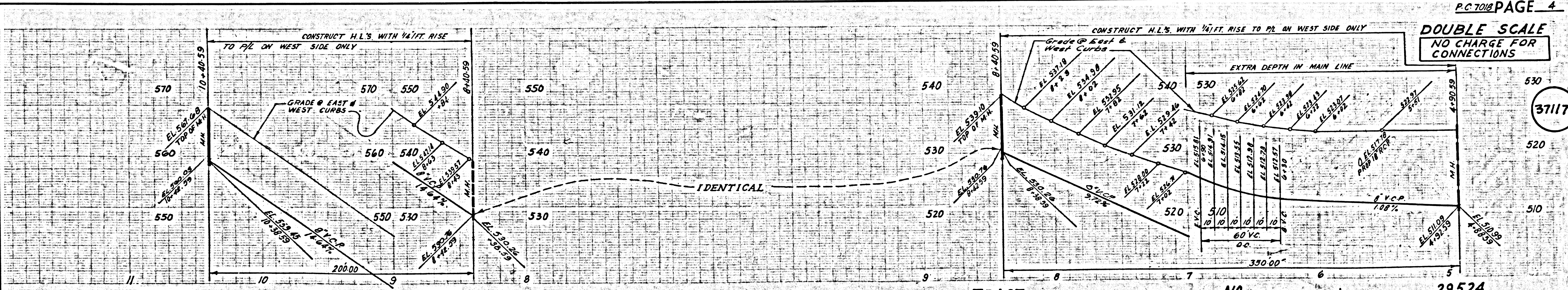
PC 7018 PAGE 3
DOUBLE SCALE
NO CHARGE FOR CONNECTIONS

37116



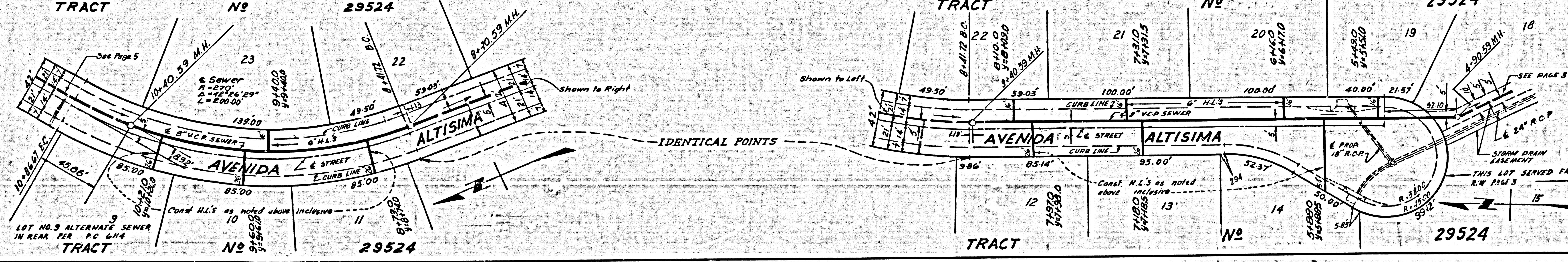
L.S. & L.M. COUNTY SEWER SHEET NO. 2 90. CAL. BLUEPRINT CO.

8107 59
ASPER 5M 12M 1

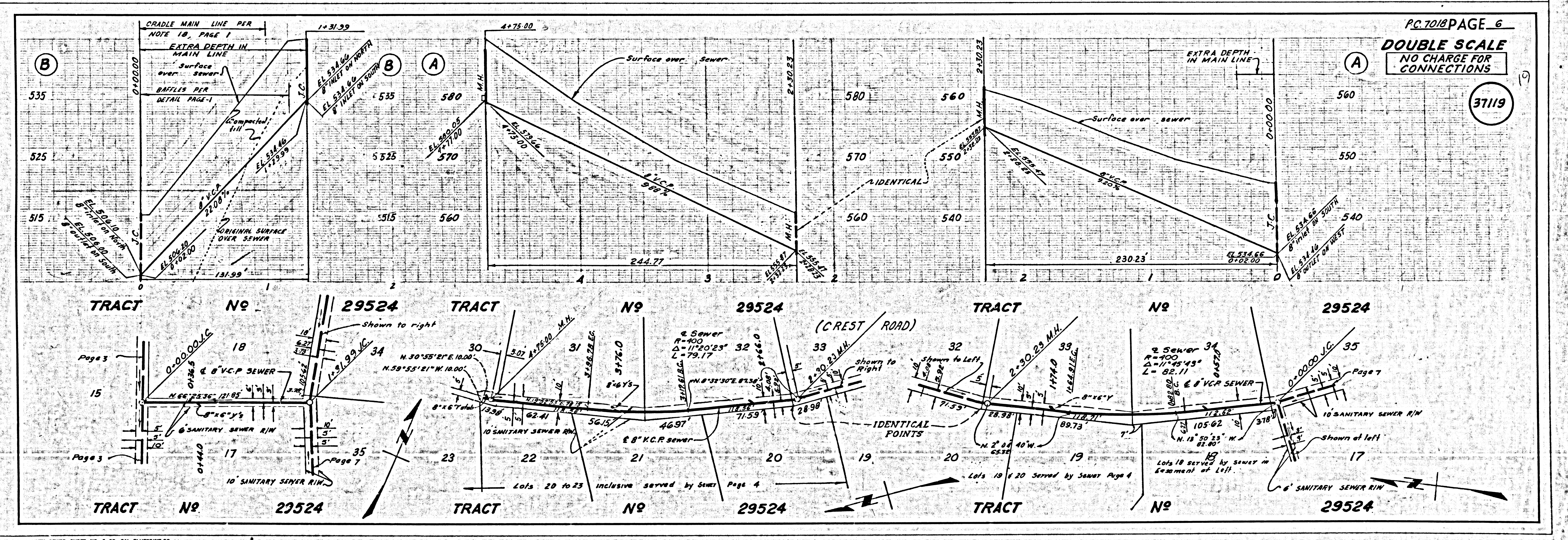
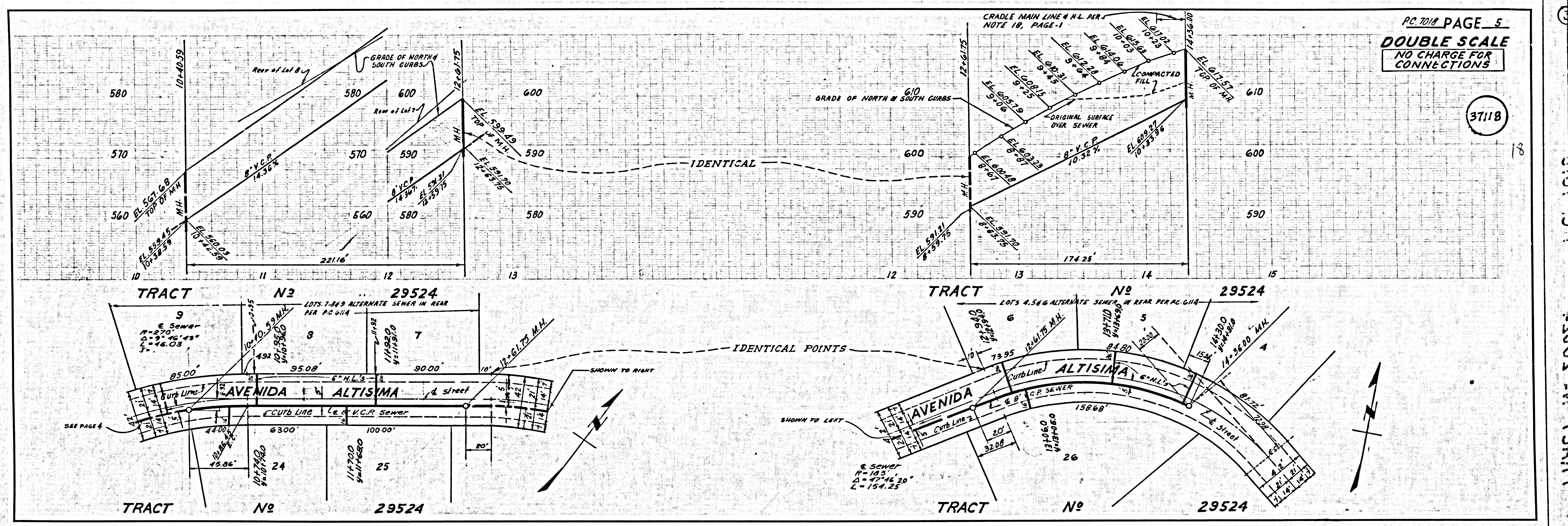


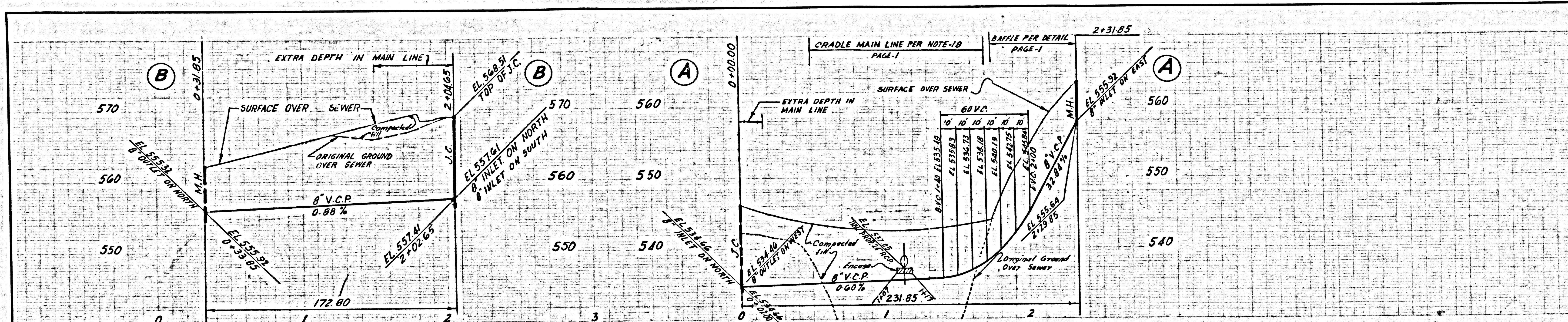
PC 7018 PAGE 4
DOUBLE SCALE
NO CHARGE FOR CONNECTIONS

37117

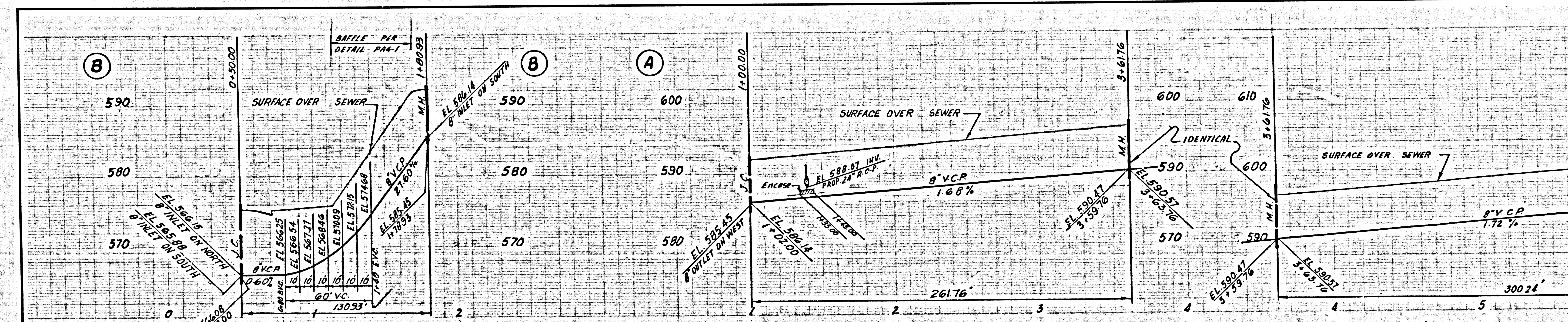
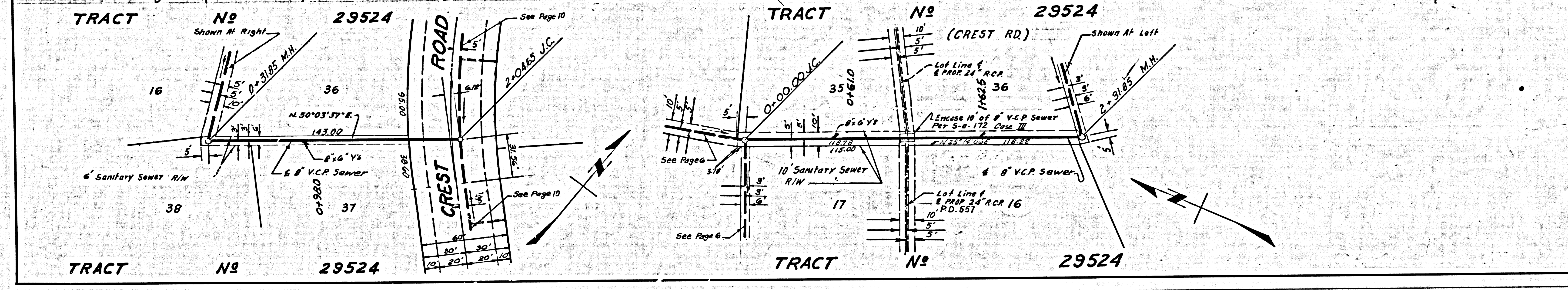


816 37118 L.S. COUNTY SEWER SHEET NO. 2 90. CAL. BLUEPRINT CO.

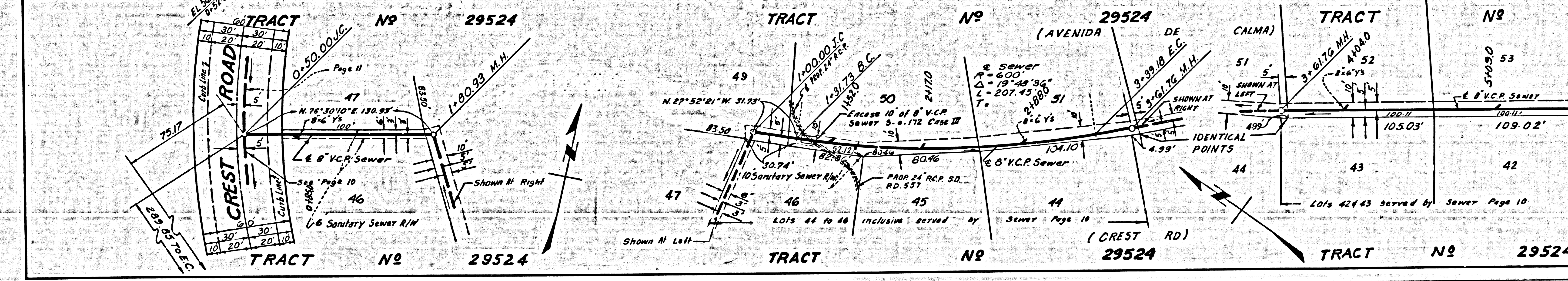


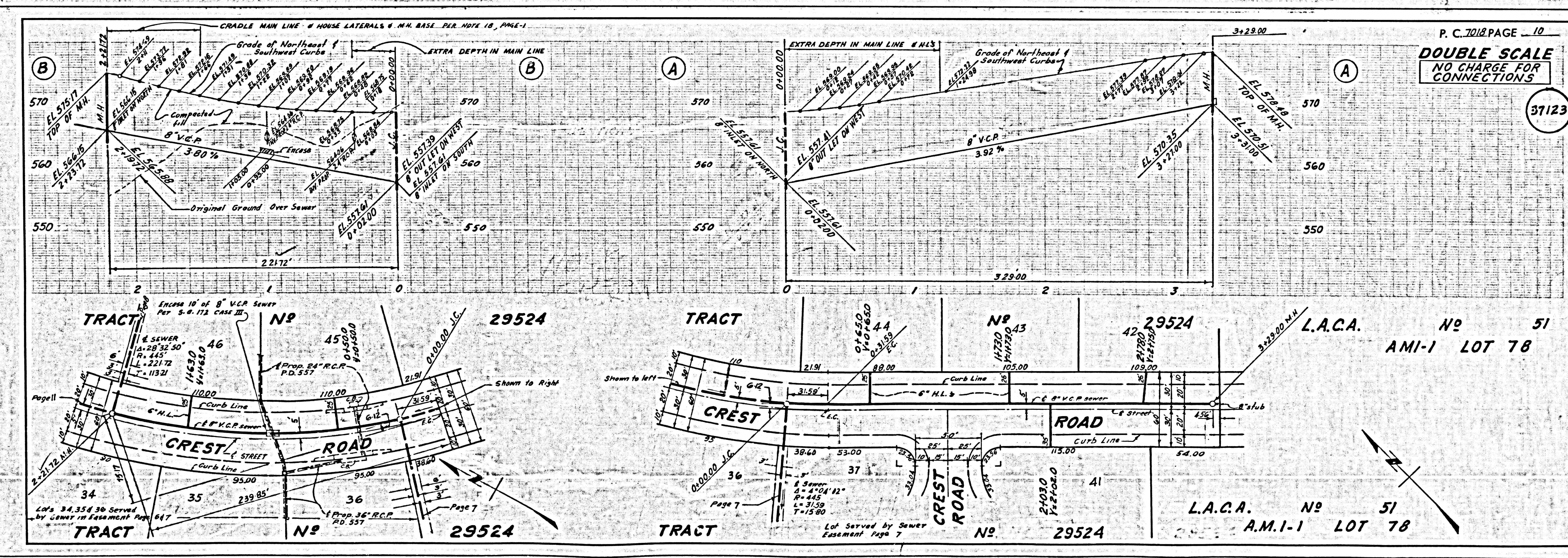
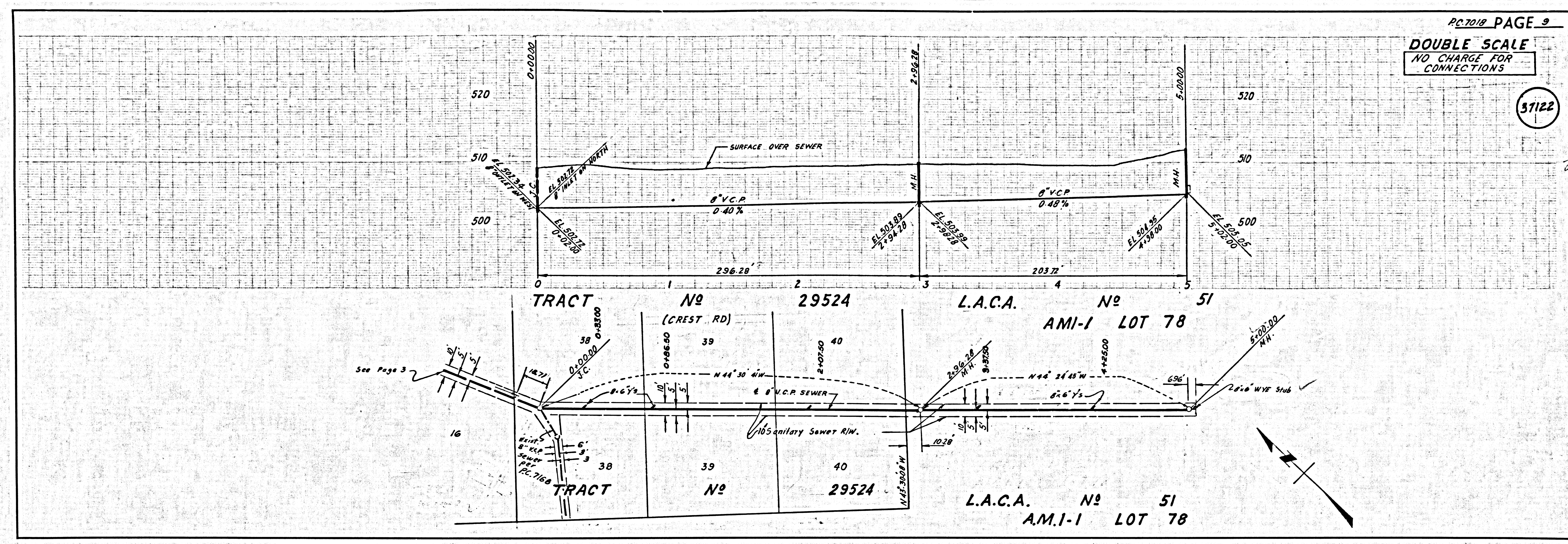


PC 7018 PAGE 7
DOUBLE SCALE
 NO CHARGE FOR CONNECTIONS
 37120



PC 7012 PAGE 8
DOUBLE SCALE
 NO CHARGE FOR CONNECTIONS
 37121

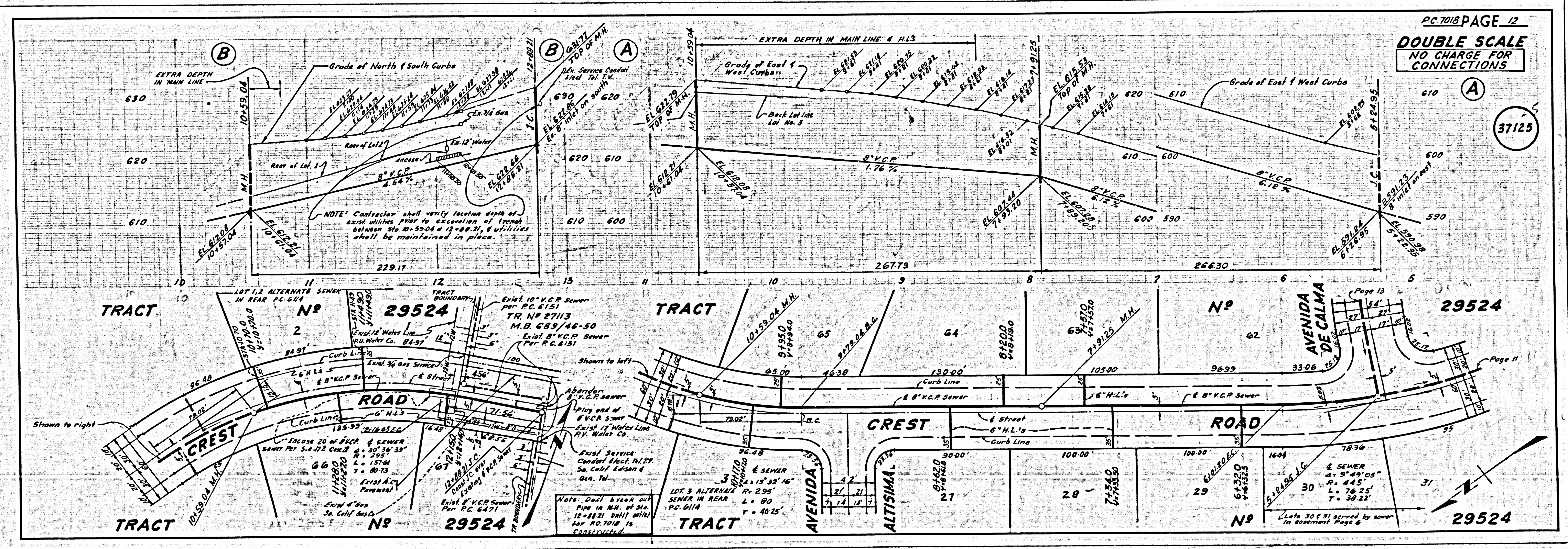
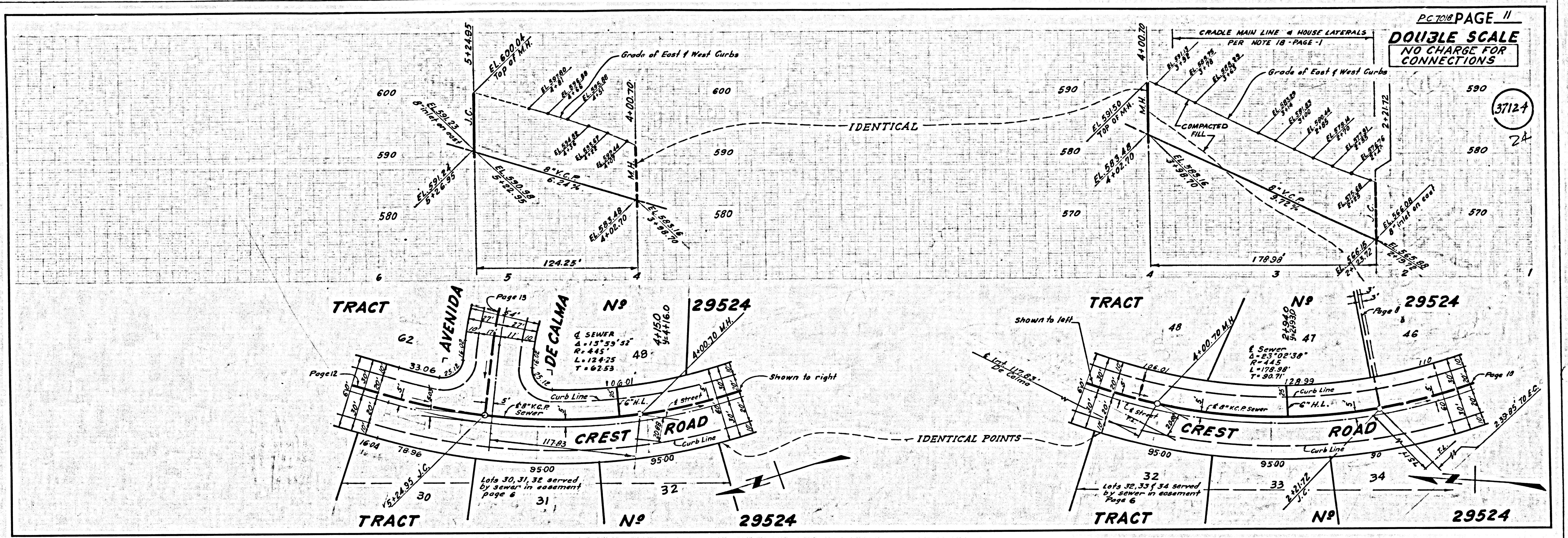




L.A. COUNTY SEWER SHEET NO. 3 S.D. CAL. BLUEPRINT CO. LA 687

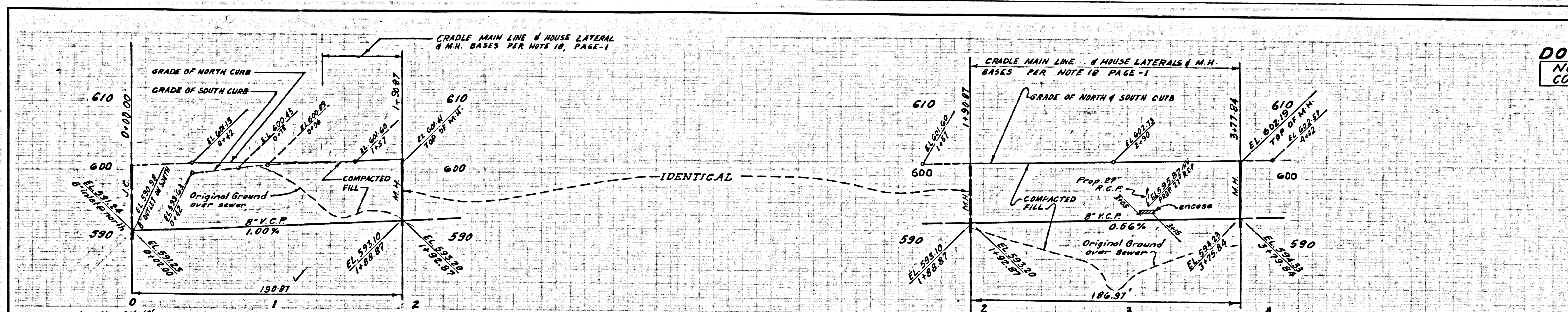
L.A. COUNTY SEWER SHEET NO. 3 SOUTHERN CALIFORNIA BLUEPRINT CO. LA 687

6



TRACT 29524

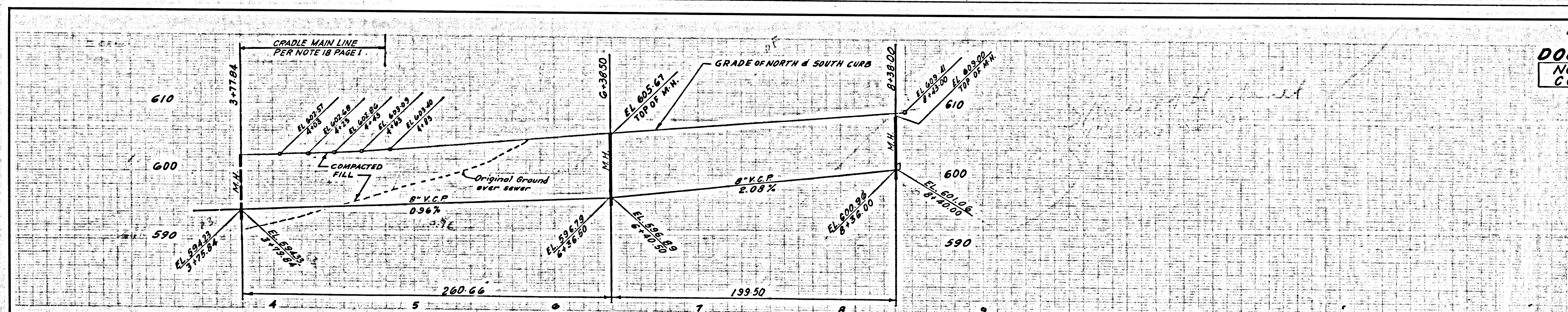
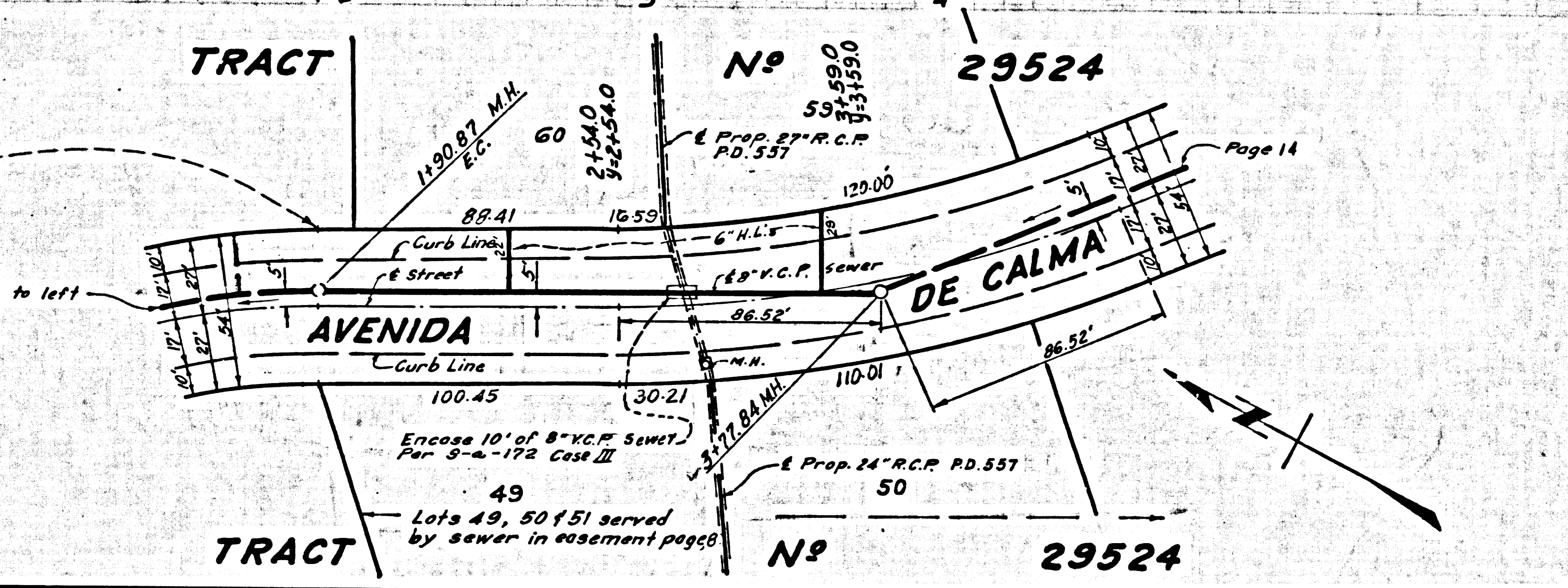
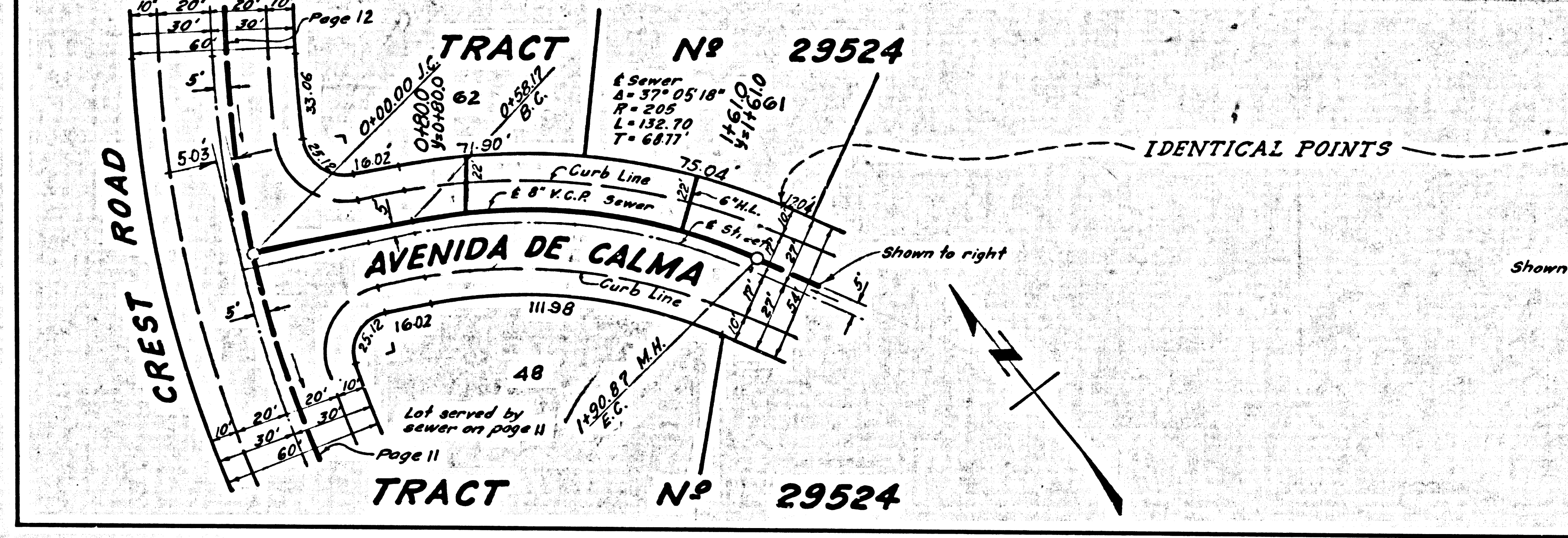
DATE: 10/1/20



PC 7012 PAGE 13
DOUBLE SCALE
 NO CHARGE FOR CONNECTIONS

37126

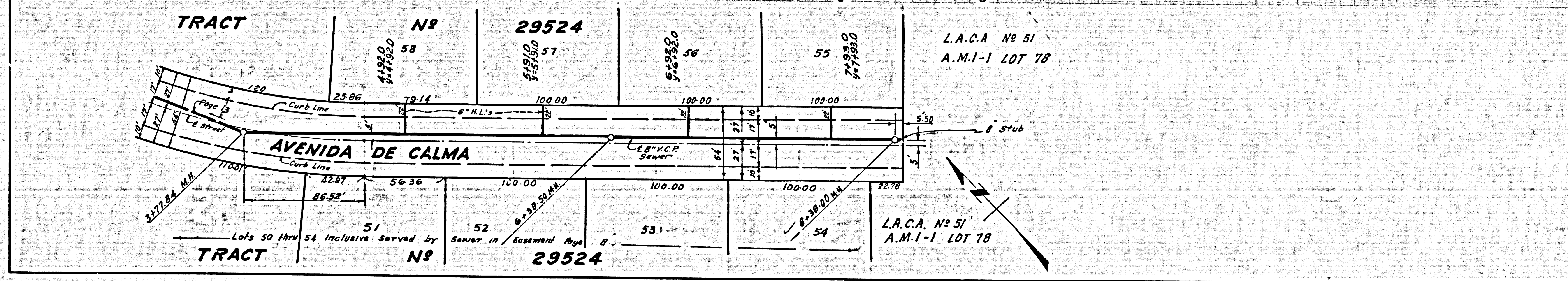
26



PC 7012 PAGE 14
DOUBLE SCALE
 NO CHARGE FOR CONNECTIONS

37127

27



U.S.G. 100 L.A. COUNTY SEWER DIST. NO. 2 CAL. BLUEPRINT CO.